

# COMMONWEALTH OF PENNSYLVANIA

## Board of Probation and Parole

### MONTHLY PROGRAM REPORT

December 2006



**Edward G. Rendell**  
Governor

Catherine C. McVey  
Chairman

Michael L. Green  
Member

Jeffrey R. Imboden  
Member

Matthew T. Mangino, Esq  
Member

Benjamin A. Martinez  
Member

Gerard N. Massaro, Ph.D.  
Member

Michael M. Webster  
Member

Lloyd A. White  
Member

Carol Lavery  
Victim Advocate

**PBPP**  
AN EQUAL OPPORTUNITY EMPLOYER

**Table 1  
WORKLOAD AND POPULATION CHANGES BY REGION / DISTRICT  
December 2006**

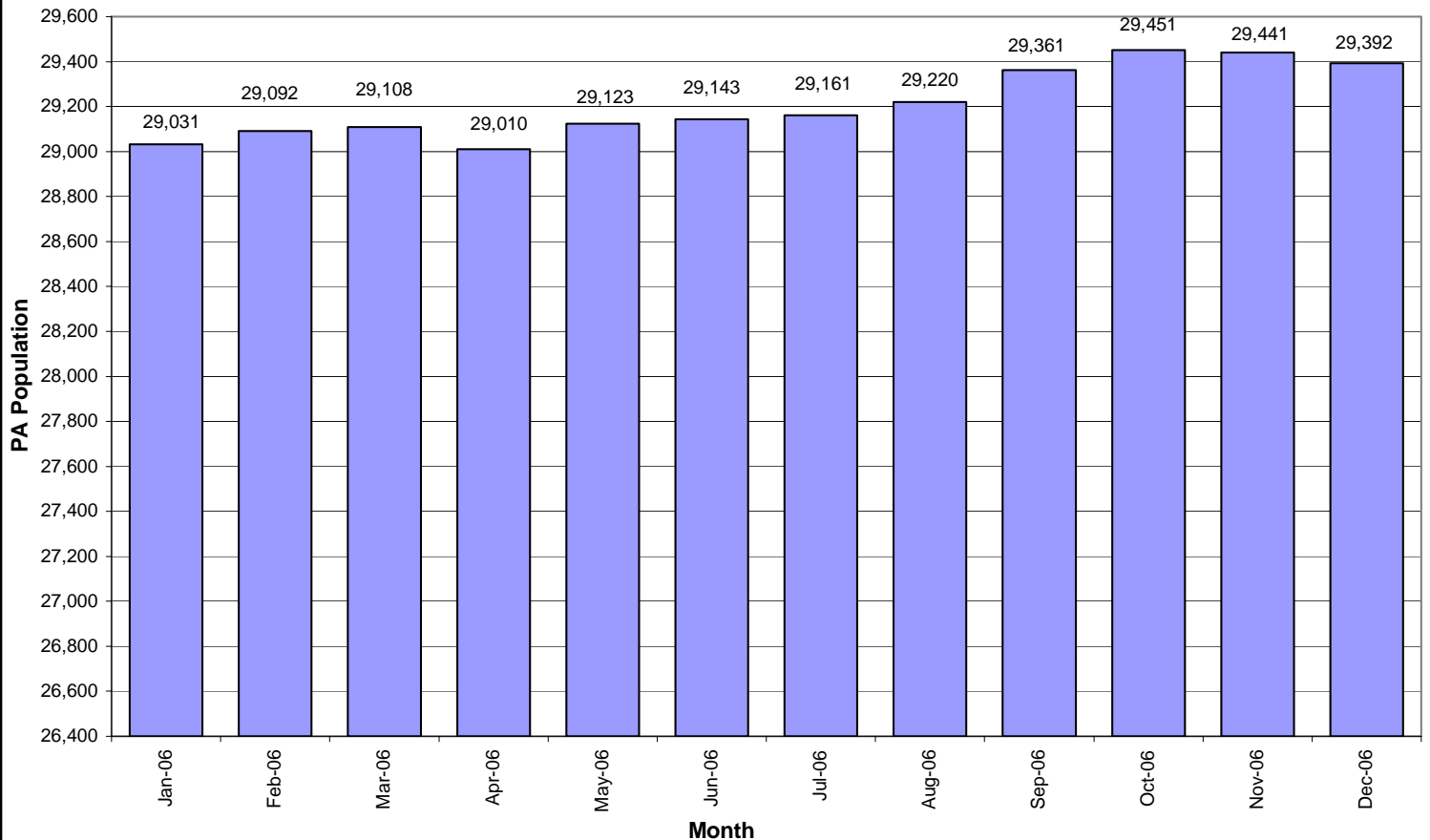
REGION / DISTRICT	Beginning Fiscal Yr <sup>1</sup> July 2006	Current Month Population	Fiscal YTD Index	Additions	Deletions		Number of Agents <sup>2</sup>	Average Workload	Total Workload
					Recommits/ Revocations	Other Deletions			
CHESTER	2,303	2,314	100	84	28	55	33	131	4,313
PHILADELPHIA	8,845	8,820	100	263	140	147	110	137	15,064
<b>EASTERN REGION</b>	<b>11,148</b>	<b>11,134</b>	<b>100</b>	<b>347</b>	<b>168</b>	<b>202</b>	<b>143</b>	<b>136</b>	<b>19,377</b>
ALLENTOWN	3,265	3,288	101	115	63	65	40	144	5,752
HARRISBURG	3,737	3,759	101	137	60	89	48	143	6,842
SCRANTON	1,558	1,522	98	52	47	50	21	141	2,964
WILLIAMSPORT	827	838	101	33	12	20	13	126	1,634
<b>CENTRAL REGION</b>	<b>9,387</b>	<b>9,407</b>	<b>100</b>	<b>337</b>	<b>182</b>	<b>224</b>	<b>122</b>	<b>141</b>	<b>17,193</b>
ALTOONA	1,075	1,136	106	33	22	19	16	144	2,298
MERCER	2,446	2,517	103	142	38	84	36	136	4,903
ERIE	1,246	1,284	103	58	21	27	16	152	2,436
PITTSBURGH	3,859	3,914	101	139	67	53	58	126	7,307
<b>WESTERN REGION</b>	<b>8,626</b>	<b>8,851</b>	<b>103</b>	<b>372</b>	<b>148</b>	<b>183</b>	<b>126</b>	<b>134</b>	<b>16,945</b>
<b>TOTAL Supervised</b>	<b>29,161</b>	<b>29,392</b>	<b>101</b>	<b>1,056</b>	<b>498</b>	<b>609</b>	<b>391</b>	<b>137</b>	<b>53,514</b>

<sup>1</sup> effective June 30

<sup>2</sup> Filled agent positions

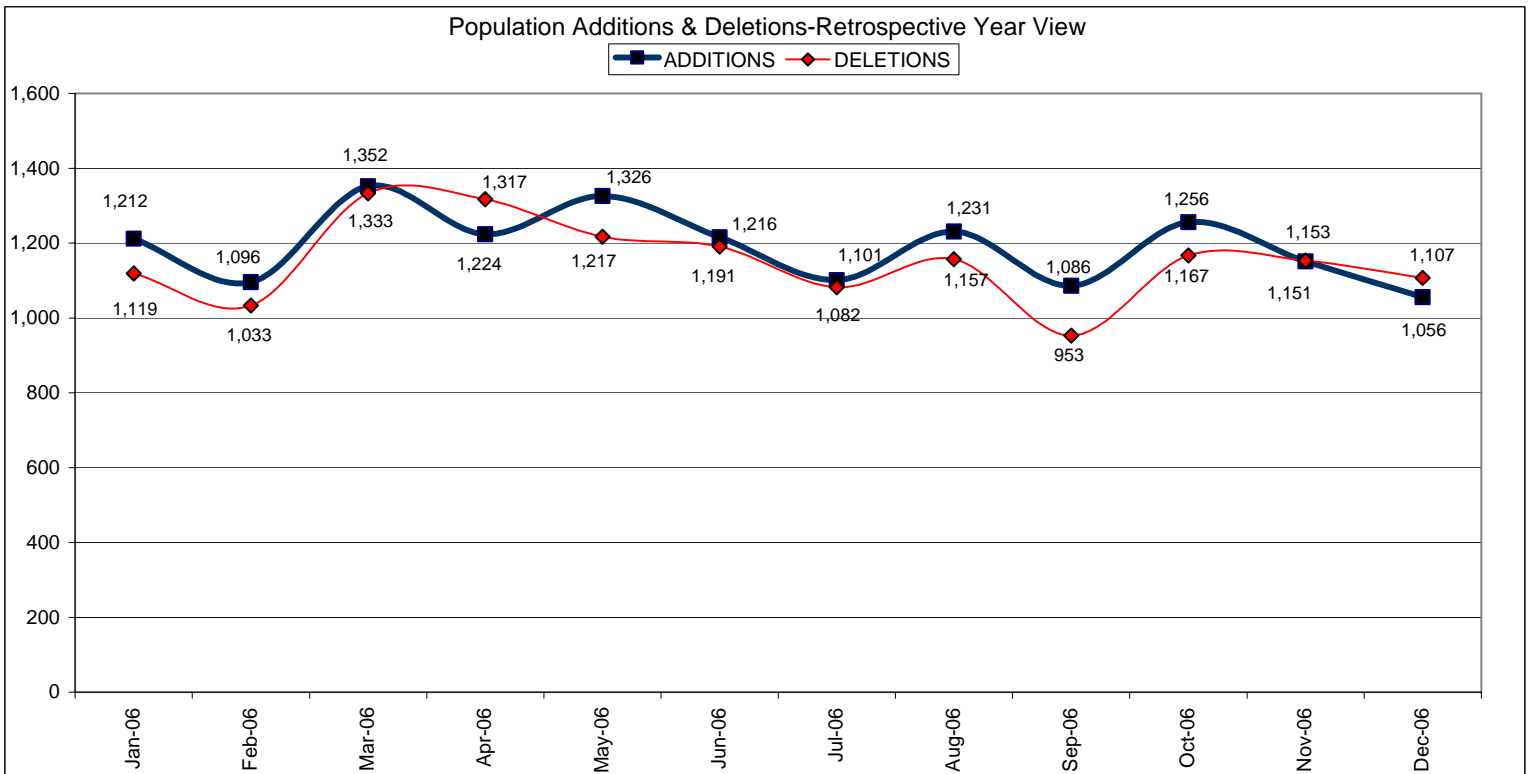
PA Offenders in Other States	<b>2,723</b>	<b>2,747</b>	<b>101</b>	<b>42</b>	<b>20</b>	<b>77</b>
------------------------------	--------------	--------------	------------	-----------	-----------	-----------

**Population Change - Retrospective Year View**



**Table 2**  
**SUPERVISED POPULATION ADDITIONS AND DELETIONS**  
**December 2006**

Population Additions and Deletions	Parole	ReParole	Special County Probation	Special County Parole	Other States' Parole	Other States' Probation	Monthly Total	Fiscal YTD Total
<b>ADDITIONS</b>	509	185	149	60	22	131	1,056	6,881
<b>DELETIONS-RECOMMITMENTS</b>								
<i>Convicted Parole Violator</i>								
State Corrections	100	34	3	0	0	0	137	730
County Corrections	7	1	9	2	0	1	20	154
Other States	1	0	1	0	0	0	2	14
<b>Total Convicted Parole Violator</b>	108	35	13	2	0	1	159	898
<i>Technical Parole Violator</i>								
State Corrections	199	79	3	0	0	0	281	1,385
County Corrections	18	1	25	12	0	0	56	309
Other States	0	0	0	0	0	2	2	9
<b>Total Technical Parole Violator</b>	217	80	28	12	0	2	339	1,703
<b>TOTAL RECOMMITMENTS</b>	325	115	41	14	0	3	498	2,601
Deletion Maximum Discharge	215	62	68	26	13	46	430	2,955
Deletion Death	14	3	2	0	0	1	20	140
Deletion Other	13	3	56	6	8	73	159	923
<b>TOTAL DELETIONS</b>	567	183	167	46	21	123	1,107	6,619



**Table 3**  
**SUPERVISED POPULATION BY ORIGINATING JURISDICTION and REGION / DISTRICT**  
**December 2006**

Region / District	PA Parole State Sentence				County		Other States		Total Population
	State Prisons	Boot Camp	County Prisons	Subtotal	Special Probation	Special Parole	Parole	Probation	
Chester	1,389	88	228	1,705	255	3	48	303	2,314
Philadelphia	6,803	224	351	7,378	725	4	117	596	8,820
<b>Eastern Region</b>	<b>8,192</b>	<b>312</b>	<b>579</b>	<b>9,083</b>	<b>980</b>	<b>7</b>	<b>165</b>	<b>899</b>	<b>11,134</b>
Allentown	2,070	117	378	2,565	258	5	68	392	3,288
Harrisburg	2,661	194	211	3,066	291	4	57	341	3,759
Scranton	787	27	225	1,039	89	7	65	322	1,522
Williamsport	529	24	63	616	106	11	17	88	838
<b>Central Region</b>	<b>6,047</b>	<b>362</b>	<b>877</b>	<b>7,286</b>	<b>744</b>	<b>27</b>	<b>207</b>	<b>1,143</b>	<b>9,407</b>
Altoona	721	30	88	839	177	18	19	83	1,136
Mercer	564	10	20	594	1,177	670	8	68	2,517
Erie	898	29	51	978	178	42	22	64	1,284
Pittsburgh	2,638	204	95	2,937	625	49	62	241	3,914
<b>Western Region</b>	<b>4,821</b>	<b>273</b>	<b>254</b>	<b>5,348</b>	<b>2,157</b>	<b>779</b>	<b>111</b>	<b>456</b>	<b>8,851</b>
<b>Total</b>	<b>19,060</b>	<b>947</b>	<b>1,710</b>	<b>21,717</b>	<b>3,881</b>	<b>813</b>	<b>483</b>	<b>2,498</b>	<b>29,392</b>
<b>Percent of Total</b>	<b>65%</b>	<b>3%</b>	<b>6%</b>	<b>74%</b>	<b>13%</b>	<b>3%</b>	<b>2%</b>	<b>8%</b>	<b>100%</b>

**Table 4**  
**SUPERVISED POPULATION BY GRADE OF SUPERVISION and REGION / DISTRICT**  
**December 2006**

Region / District	Reporting						Non-Reporting		Total Population
	Enhanced	Maximum	Medium	Minimum	Not Classified	Subtotal	Absconder	Detainees	
Chester	16	548	513	641	1	1,719	85	510	2,314
Philadelphia	66	2,474	1,324	2,073	43	5,980	742	2,098	8,820
<b>Eastern Region</b>	<b>82</b>	<b>3,022</b>	<b>1,837</b>	<b>2,714</b>	<b>44</b>	<b>7,699</b>	<b>827</b>	<b>2,608</b>	<b>11,134</b>
Allentown	14	570	692	1,012	5	2,293	237	758	3,288
Harrisburg	24	777	610	1,355	18	2,784	176	799	3,759
Scranton	11	197	337	671	1	1,217	27	278	1,522
Williamsport	2	94	173	448	2	719	11	108	838
<b>Central Region</b>	<b>51</b>	<b>1,638</b>	<b>1,812</b>	<b>3,486</b>	<b>26</b>	<b>7,013</b>	<b>451</b>	<b>1,943</b>	<b>9,407</b>
Altoona	17	208	286	389	0	900	34	202	1,136
Mercer	4	257	629	1,215	1	2,106	100	311	2,517
Erie	8	223	267	452	4	954	42	288	1,284
Pittsburgh	51	945	849	1,039	3	2,887	142	885	3,914
<b>Western Region</b>	<b>80</b>	<b>1,633</b>	<b>2,031</b>	<b>3,095</b>	<b>8</b>	<b>6,847</b>	<b>318</b>	<b>1,686</b>	<b>8,851</b>
<b>Total</b>	<b>213</b>	<b>6,293</b>	<b>5,680</b>	<b>9,295</b>	<b>78</b>	<b>21,559</b>	<b>1,596</b>	<b>6,237</b>	<b>29,392</b>
<b>Percent of Total</b>	<b>1%</b>	<b>21%</b>	<b>19%</b>	<b>32%</b>	<b>0%</b>	<b>73%</b>	<b>5%</b>	<b>21%</b>	<b>100%</b>

**Table 5**  
**SUPERVISED POPULATION BY GENDER, RACE and REGION / DISTRICT**  
**December 2006**

Region / District	Male			Female			Percent Male	Percent Female	Total Population
	White	Non White	Total	White	Non White	Total			
Chester	890	1,259	2,149	103	62	165	93%	7%	2,314
Philadelphia	990	7,273	8,263	118	439	557	94%	6%	8,820
<b>EASTERN REGION</b>	<b>1,880</b>	<b>8,532</b>	<b>10,412</b>	<b>221</b>	<b>501</b>	<b>722</b>	<b>94%</b>	<b>6%</b>	<b>11,134</b>
Allentown	1,322	1,626	2,948	202	138	340	90%	10%	3,288
Harrisburg	1,662	1,673	3,335	269	155	424	89%	11%	3,759
Scranton	1,032	289	1,321	175	26	201	87%	13%	1,522
Williamsport	593	77	670	144	24	168	80%	20%	838
<b>CENTRAL REGION</b>	<b>4,609</b>	<b>3,665</b>	<b>8,274</b>	<b>790</b>	<b>343</b>	<b>1,133</b>	<b>88%</b>	<b>12%</b>	<b>9,407</b>
Altoona	876	125	1,001	120	15	135	88%	12%	1,136
Mercer	1,639	357	1,996	443	78	521	79%	21%	2,517
Erie	699	397	1,096	143	45	188	85%	15%	1,284
Pittsburgh	1,657	1,893	3,550	230	134	364	91%	9%	3,914
<b>WESTERN REGION</b>	<b>4,871</b>	<b>2,772</b>	<b>7,643</b>	<b>936</b>	<b>272</b>	<b>1,208</b>	<b>86%</b>	<b>14%</b>	<b>8,851</b>
<b>TOTAL</b>	<b>11,360</b>	<b>14,969</b>	<b>26,329</b>	<b>1,947</b>	<b>1,116</b>	<b>3,063</b>	<b>90%</b>	<b>10%</b>	<b>29,392</b>

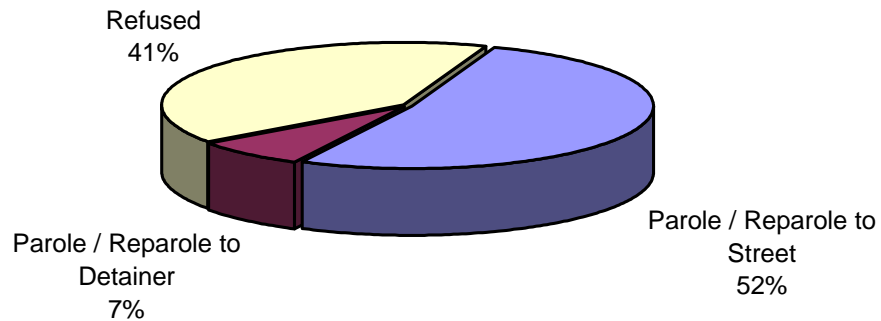
**Table 6**  
**SUPERVISED POPULATION BY EMPLOYMENT STATUS and REGION / DISTRICT**  
**December 2006**

Region / District	Employed	Unemployed	Unemployment Rate	Unable to Work	Unknown	Non Reporting	Total Population
Chester	1,034	444	30%	230	11	595	2,314
Philadelphia	2,985	2,080	41%	899	16	2,840	8,820
<b>EASTERN REGION</b>	<b>4,019</b>	<b>2,524</b>	<b>39%</b>	<b>1,129</b>	<b>27</b>	<b>3,435</b>	<b>11,134</b>
Allentown	1,471	442	23%	379	1	995	3,288
Harrisburg	1,867	595	24%	318	4	975	3,759
Scranton	831	202	20%	183	1	305	1,522
Williamsport	511	128	20%	79	1	119	838
<b>CENTRAL REGION</b>	<b>4,680</b>	<b>1,367</b>	<b>23%</b>	<b>959</b>	<b>7</b>	<b>2,394</b>	<b>9,407</b>
Altoona	571	154	21%	175	0	236	1,136
Mercer	1,045	606	37%	454	1	411	2,517
Erie	527	251	32%	175	1	330	1,284
Pittsburgh	1,650	513	24%	724	0	1,027	3,914
<b>WESTERN REGION</b>	<b>3,793</b>	<b>1,524</b>	<b>29%</b>	<b>1,528</b>	<b>2</b>	<b>2,004</b>	<b>8,851</b>
<b>TOTAL</b>	<b>12,492</b>	<b>5,415</b>	<b>30%</b>	<b>3,616</b>	<b>36</b>	<b>7,833</b>	<b>29,392</b>

**Table 7  
BOARD DECISIONS  
December 2006**

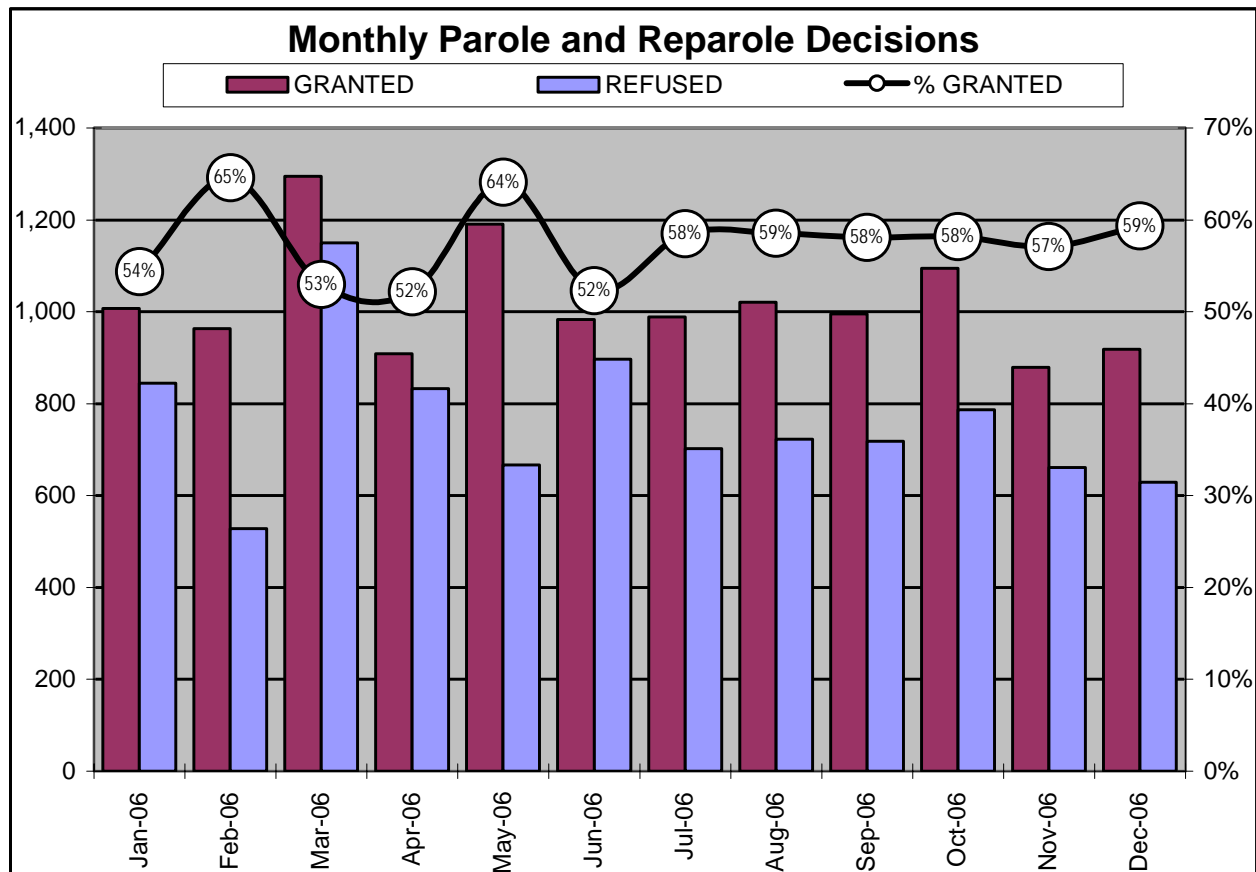
<b>Type of Decision</b>		<b>Total</b>
Parole / Reparole to Street		804
Parole / Reparole to Detainer		114
Refused		629
Total Considered		1,547
Percent Granted		59%
Recommitments		467
Refer to Prior Action		130
Assigned by Courts		445
Other Decisions		712
<b>Total Decisions</b>		<b>3,301</b>

**Parole / Reparole Decisions December 2006**



**Table 8**  
**MONTHLY PAROLE and REPAROLE DECISIONS**  
**December 2006**

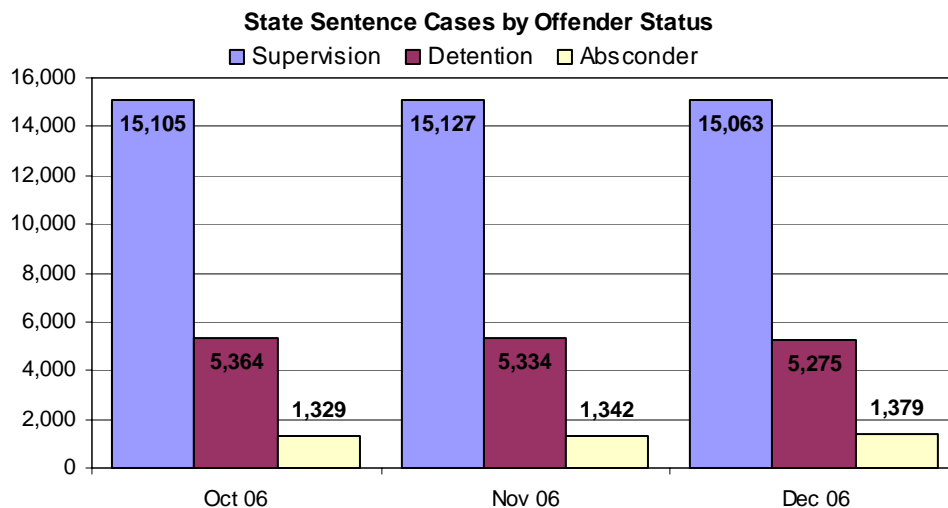
MONTH/YEAR	GRANTED	REFUSED	CONSIDERED	% GRANTED
Jan-06	1,007	845	1,852	54%
Feb-06	963	528	1,491	65%
Mar-06	1,295	1,150	2,445	53%
Apr-06	909	833	1,742	52%
May-06	1,191	667	1,858	64%
Jun-06	983	897	1,880	52%
Jul-06	989	702	1,691	58%
Aug-06	1,021	723	1,744	59%
Sep-06	995	718	1,713	58%
Oct-06	1,095	787	1,882	58%
Nov-06	879	661	1,540	57%
Dec-06	918	629	1,547	59%
<b>Monthly Avg Prior 12 Mo</b>	<b>1,020</b>	<b>762</b>	<b>1,782</b>	<b>57%</b>



## PBPP Population Breakdown By Place of Incarceration/Jurisdiction – December 2006

Offender Status - December 2006					
Status	State Prison	County Prison	County Sentence	Other States Cases	Total
Supervision	13,836	1,227	3,715	2,781	21,559
Absconder	1,303	76	216	1	1,596
Detention	4,868	407	763	199	6,237
Total	20,007	1,710	4,694	2,981	29,392

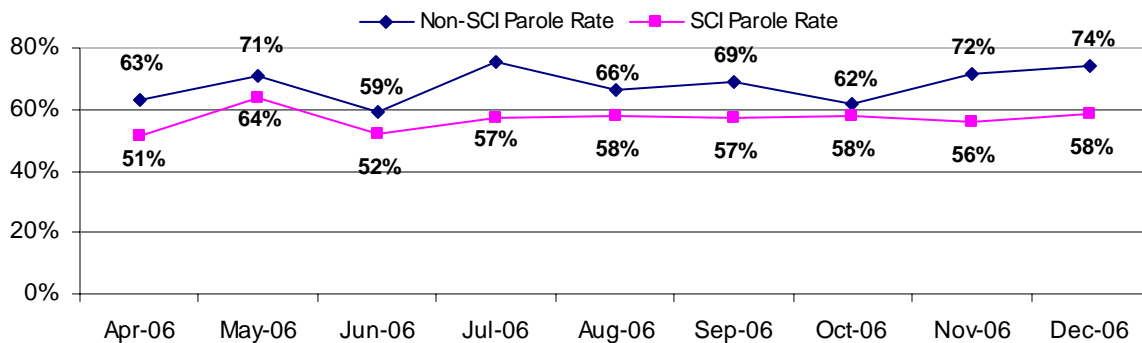
PBPP Monthly Population Profile						
Offender Status	Jul 06	Aug 06	Sep 06	Oct 06	Nov 06	Dec 06
<b>State sentence from state institution</b>	<b>19,950</b>	<b>20,002</b>	<b>20,081</b>	<b>20,108</b>	<b>20,099</b>	<b>20,007</b>
<i>Supervision</i>	13,934	13,844	13,792	13,877	13,899	13,836
<i>Absconder</i>	1,342	1,326	1,298	1,261	1,267	1,303
<i>Detention</i>	4,674	4,832	4,991	4,970	4,933	4,868
<b>State sentence from County Prison</b>	<b>1,673</b>	<b>1,674</b>	<b>1,679</b>	<b>1,690</b>	<b>1,704</b>	<b>1,710</b>
<i>Supervision</i>	1,224	1,219	1,229	1,228	1,228	1,227
<i>Absconder</i>	81	76	74	68	75	76
<i>Detention</i>	368	379	376	394	401	407
<b>County sentence Prob &amp; Parole</b>	<b>4,565</b>	<b>4,586</b>	<b>4,659</b>	<b>4,678</b>	<b>4,669</b>	<b>4,694</b>
<i>Supervision</i>	3,613	3,602	3,660	3,666	3,663	3,715
<i>Absconder</i>	204	205	217	220	216	216
<i>Detention</i>	748	779	782	792	790	763
<b>Other state's sentence Prob &amp; Parole</b>	<b>2,973</b>	<b>2,958</b>	<b>2,942</b>	<b>2,975</b>	<b>2,969</b>	<b>2,981</b>
<i>Supervision</i>	2,767	2,741	2,725	2,766	2,771	2,781
<i>Absconder</i>	2	2	2	1	1	1
<i>Detention</i>	204	215	215	208	197	199
<b>PBPP Population end of month</b>	<b>29,161</b>	<b>29,220</b>	<b>29,361</b>	<b>29,451</b>	<b>29,441</b>	<b>29,392</b>





## PBPP Population Breakdown By Place of Incarceration/Jurisdiction – December 2006

Monthly Count of Board Actions							
	Non-SCI			SCI			
Type of Decision	Grant	Refuse	Total	Grant	Refuse	Total	Total Board Actions
January 2006	78	44	122	929	801	1,730	<b>1,852</b>
February 2006	76	34	110	887	494	1,381	<b>1,491</b>
March 2006	98	62	160	1,197	1,088	2,285	<b>2,445</b>
April 2006	88	51	139	822	781	1,603	<b>1,742</b>
May 2006	102	42	144	1,089	625	1,714	<b>1,858</b>
June 2006	81	56	137	902	841	1,743	<b>1,880</b>
July 2006	73	24	97	916	678	1,594	<b>1,691</b>
August 2006	86	44	130	935	679	1,614	<b>1,744</b>
September 2006	84	38	122	911	680	1,591	<b>1,713</b>
October 2006	72	44	116	1,023	743	1,766	<b>1,882</b>
November 2006	88	35	123	791	626	1,417	<b>1,540</b>
December 2006	85	30	115	833	599	1,432	<b>1,547</b>
2006 Total	1,011	504	1,515	11,235	8,635	19,870	21,385



Additions and Deletions						
	Jul 06	Aug 06	Sep 06	Oct 06	Nov-06	Dec-06
<b>Total Additions</b>	<b>1,101</b>	<b>1,231</b>	<b>1,086</b>	<b>1,256</b>	<b>1,151</b>	<b>1,056</b>
State sentence - SCI	727	751	651	783	719	612
State sentence - Cnty Prison	57	82	73	75	69	82
County sentence Prob & Parole	196	238	225	213	212	209
Other state's sentence	121	160	137	185	151	153
<b>Total Deletions</b>	<b>1,082</b>	<b>1,157</b>	<b>953</b>	<b>1,167</b>	<b>1,153</b>	<b>1,107</b>
<b>State sentence - SCI</b>	<b>648</b>	<b>652</b>	<b>539</b>	<b>720</b>	<b>704</b>	<b>678</b>
<i>Technical Violator</i>	206	210	149	257	258	278
<i>Convicted Violator</i>	129	110	72	136	134	134
<i>Maximum Expiration</i>	287	299	291	288	268	235
<i>Other Case Closure</i>	26	33	27	39	44	31
<b>State sentence - Cnty Prison</b>	<b>54</b>	<b>74</b>	<b>68</b>	<b>67</b>	<b>55</b>	<b>71</b>
<i>Technical Violator</i>	11	13	12	14	16	19
<i>Convicted Violator</i>	6	6	12	5	5	8
<i>Maximum Expiration</i>	35	51	43	43	32	42
<i>Other Case Closure</i>	2	4	1	5	2	2
<b>County sentence Prob &amp; Parole</b>	<b>242</b>	<b>256</b>	<b>189</b>	<b>227</b>	<b>233</b>	<b>213</b>
<i>Technical Violator</i>	52	50	37	38	35	40
<i>Convicted Violator</i>	22	27	21	23	19	15
<i>Maximum Expiration</i>	122	129	92	125	122	94
<i>Other Case Closure</i>	46	50	39	41	57	64
<b>Other state's sentence</b>	<b>148</b>	<b>175</b>	<b>157</b>	<b>153</b>	<b>161</b>	<b>145</b>
<i>Technical Violator</i>	3	1	2	0	0	2
<i>Convicted Violator</i>	2	5	1	4	1	2
<i>Maximum Expiration</i>	57	64	71	42	64	59
<i>Other Case Closure</i>	76	105	83	107	96	82
<b>PBPP Population end of month</b>	<b>29,161</b>	<b>29,220</b>	<b>29,361</b>	<b>29,451</b>	<b>29,441</b>	<b>29,392</b>