

COMMONWEALTH OF PENNSYLVANIA

Board of Probation and Parole

MONTHLY PROGRAM REPORT

December 2005



Edward G. Rendell
Governor

Catherine C. McVey
Chairman

Michael L. Green
Member

Jeffrey R. Imboden
Member

Benjamin Martinez
Member

Gerard N. Massaro, Ph.D.
Member

Sean R. Ryan
Member

Michael M. Webster
Member

Lloyd A. White
Member

Victim Advocate

pbpp
AN EQUAL OPPORTUNITY EMPLOYER

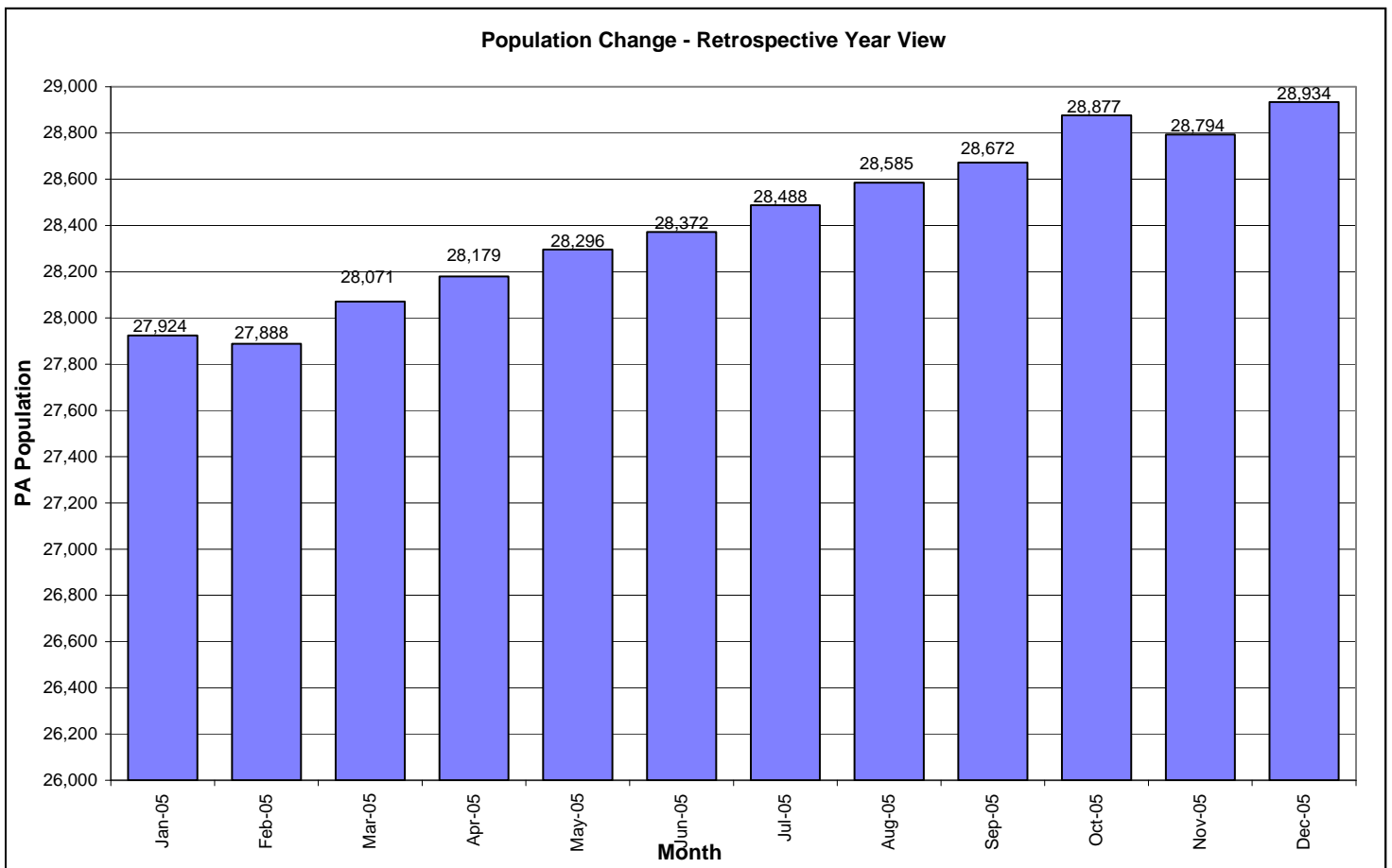
**Table 1
WORKLOAD AND POPULATION CHANGES BY REGION / DISTRICT
December 2005**

REGION / DISTRICT	Beginning Fiscal Yr ¹ July 2005	Current Month Population	Fiscal YTD Index	Additions	Deletions		Number of Agents ²	Average Workload	Total Workload
					Recommits/ Revocations	Other Deletions			
CHESTER	2,366	2,281	96	76	28	53	33	123	4,075
PHILADELPHIA	8,674	8,864	102	281	102	165	111	140	15,581
EASTERN REGION	11,040	11,145	101	357	130	218	144	136	19,656
ALLENTOWN	3,017	3,117	103	160	45	69	40	136	5,433
HARRISBURG	3,669	3,824	104	147	38	76	49	135	6,632
SCRANTON	1,444	1,526	106	73	22	33	22	133	2,916
WILLIAMSPORT	830	825	99	28	8	19	14	112	1,574
CENTRAL REGION	8,960	9,292	104	408	113	197	125	132	16,555
ALTOONA	1,044	1,024	98	36	16	21	16	128	2,045
MERCER	2,369	2,454	104	158	35	95	37	126	4,664
ERIE	1,135	1,176	104	63	37	20	17	128	2,173
PITTSBURGH	3,824	3,843	100	134	69	65	61	117	7,130
WESTERN REGION	8,372	8,497	101	391	157	201	131	122	16,012
TOTAL Supervised	28,372	28,934	102	1,156	400	616	400	131	52,223

¹ effective June 30

² Filled agent positions

PA Offenders in Other States	2,659	2,706	102	57	12	79
------------------------------	--------------	--------------	------------	-----------	-----------	-----------



**Table 2
SUPERVISED POPULATION ADDITIONS AND DELETIONS
December 2005**

Population Additions and Deletions	Parole	ReParole	Special County Probation	Special County Parole	Other States' Parole	Other States' Probation	Monthly Total	Fiscal YTD Total
ADDITIONS	587	177	156	74	29	133	1,156	7,093
DELETIONS-RECOMMITMENTS								
<i>Convicted Parole Violator</i>								
State Corrections	73	25	3	1	0	0	102	682
County Corrections	2	0	16	2	0	0	20	157
Other States	0	0	0	0	1	1	2	8
Total Convicted Parole Violator	75	25	19	3	1	1	124	847
<i>Technical Parole Violator</i>								
State Corrections	163	72	3	0	0	0	238	1,661
County Corrections	12	1	15	10	0	0	38	323
Other States	0	0	0	0	0	0	0	7
Total Technical Parole Violator	175	73	18	10	0	0	276	1,991
TOTAL RECOMMITMENTS	250	98	37	13	1	1	400	2,838
Deletion Maximum Discharge	196	63	80	31	20	42	432	2,662
Deletion Death	8	1	0	0	0	1	10	113
Deletion Other	17	3	43	8	11	92	174	906
TOTAL DELETIONS	471	165	160	52	32	136	1,016	6,519

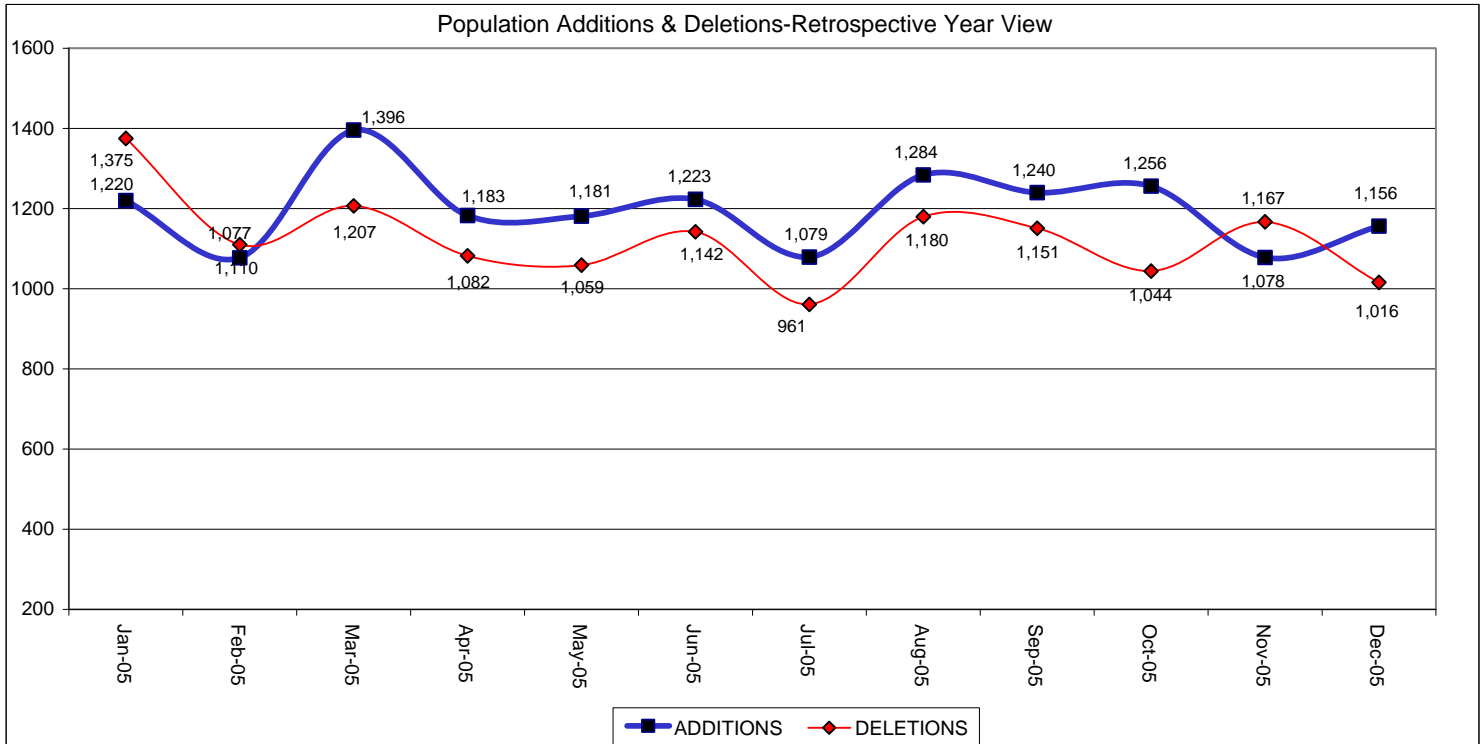


Table 3
SUPERVISED POPULATION BY ORIGINATING JURISDICTION and REGION / DISTRICT
December 2005

Region / District	PA Parole State Sentence				County		Other States		Total Population
	State Prisons	Boot Camp	County Prisons	Subtotal	Special Probation	Special Parole	Parole	Probation	
Chester	1,379	98	220	1,697	243	4	57	280	2,281
Philadelphia	6,943	265	387	7,595	627	4	124	514	8,864
Eastern Region	8,322	363	607	9,292	870	8	181	794	11,145
Allentown	1,982	117	354	2,453	218	6	59	381	3,117
Harrisburg	2,713	238	223	3,174	262	8	56	324	3,824
Scranton	805	30	226	1,061	88	2	53	322	1,526
Williamsport	529	27	57	613	87	7	21	97	825
Central Region	6,029	412	860	7,301	655	23	189	1,124	9,292
Altoona	632	23	77	732	157	28	13	94	1,024
Mercer	519	10	18	547	1,154	676	11	66	2,454
Erie	816	36	43	895	158	47	19	57	1,176
Pittsburgh	2,613	200	52	2,865	632	46	66	234	3,843
Western Region	4,580	269	190	5,039	2,101	797	109	451	8,497
Total	18,931	1,044	1,657	21,632	3,626	828	479	2,369	28,934
Percent of Total	65%	4%	6%	75%	13%	3%	2%	8%	100%

Table 4
SUPERVISED POPULATION BY GRADE OF SUPERVISION and REGION / DISTRICT
December 2005

Region / District	Reporting						Non-Reporting		Total Population
	Enhanced	Maximum	Medium	Minimum	Not Classified	Subtotal	Absconder	Detainees	
Chester	32	615	495	468	38	1,648	114	519	2,281
Philadelphia	88	2,628	1,742	1,500	30	5,988	792	2,084	8,864
Eastern Region	120	3,243	2,237	1,968	68	7,636	906	2,603	11,145
Allentown	3	666	688	893	2	2,252	216	649	3,117
Harrisburg	13	689	662	1,304	53	2,721	221	882	3,824
Scranton	11	225	327	646	10	1,219	34	273	1,526
Williamsport	1	98	152	461	6	718	8	99	825
Central Region	28	1,678	1,829	3,304	71	6,910	479	1,903	9,292
Altoona	2	166	263	376	0	807	34	183	1,024
Mercer	6	270	663	1,132	6	2,077	91	286	2,454
Erie	12	200	221	437	19	889	37	250	1,176
Pittsburgh	39	982	833	959	14	2,827	165	851	3,843
Western Region	59	1,618	1,980	2,904	39	6,600	327	1,570	8,497
Total	207	6,539	6,046	8,176	178	21,146	1,712	6,076	28,934
Percent of Total	1%	23%	21%	28%	1%	73%	6%	21%	100%

Table 5
SUPERVISED POPULATION BY GENDER, RACE and REGION / DISTRICT
December 2005

Region / District	Male			Female			Percent Male	Percent Female	Total Population
	White	Non White	Total	White	Non White	Total			
Chester	831	1,286	2,117	113	51	164	93%	7%	2,281
Philadelphia	1,017	7,286	8,303	123	438	561	94%	6%	8,864
EASTERN REGION	1,848	8,572	10,420	236	489	725	93%	7%	11,145
Allentown	1,225	1,554	2,779	195	143	338	89%	11%	3,117
Harrisburg	1,686	1,753	3,439	226	159	385	90%	10%	3,824
Scranton	1,036	303	1,339	159	28	187	88%	12%	1,526
Williamsport	576	78	654	145	26	171	79%	21%	825
CENTRAL REGION	4,523	3,688	8,211	725	356	1,081	88%	12%	9,292
Altoona	787	119	906	107	11	118	88%	12%	1,024
Mercer	1,636	326	1,962	420	72	492	80%	20%	2,454
Erie	678	351	1,029	104	43	147	88%	13%	1,176
Pittsburgh	1,597	1,891	3,488	212	143	355	91%	9%	3,843
WESTERN REGION	4,698	2,687	7,385	843	269	1,112	87%	13%	8,497
TOTAL	11,069	14,947	26,016	1,804	1,114	2,918	90%	10%	28,934

Table 6
SUPERVISED POPULATION BY EMPLOYMENT STATUS and REGION / DISTRICT
December 2005

Region / District	Employed	Unemployed	Unemployment Rate	Unable to Work	Unknown	Non Reporting	Total Population
Chester	1,039	405	28%	199	5	633	2,281
Philadelphia	3,247	1,838	36%	893	10	2,876	8,864
EASTERN REGION	4,286	2,243	34%	1,092	15	3,509	11,145
Allentown	1,401	463	25%	385	3	865	3,117
Harrisburg	1,942	506	21%	270	3	1,103	3,824
Scranton	790	271	26%	149	9	307	1,526
Williamsport	470	144	23%	104	0	107	825
CENTRAL REGION	4,603	1,384	23%	908	15	2,382	9,292
Altoona	509	126	20%	172	0	217	1,024
Mercer	1,069	593	36%	415	0	377	2,454
Erie	519	184	26%	184	2	287	1,176
Pittsburgh	1,684	332	16%	802	9	1,016	3,843
WESTERN REGION	3,781	1,235	25%	1,573	11	1,897	8,497
TOTAL	12,670	4,862	28%	3,573	41	7,788	28,934

**Table 7
BOARD DECISIONS
December 2005**

Type of Decision		Total
Parole / Reparole to Street		1,017
Parole / Reparole to Detainer		124
Refused		604
Total Considered		1,745
Percent Granted		65%
Recommitments		631
Refer to Prior Action		142
Assigned by Courts		307
Other Decisions		636
Total Decisions		3,461

Parole / Reparole Decisions December 2005

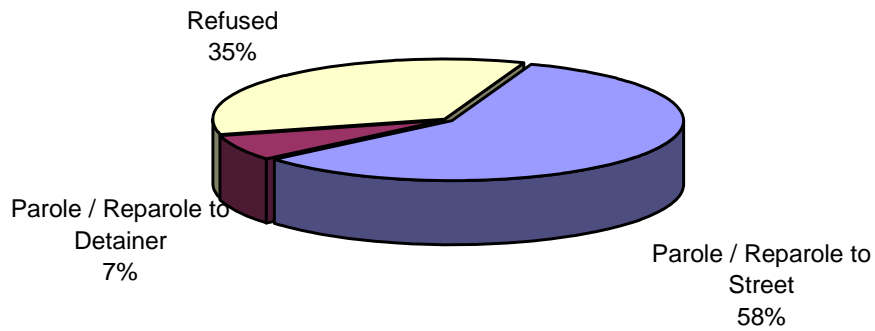
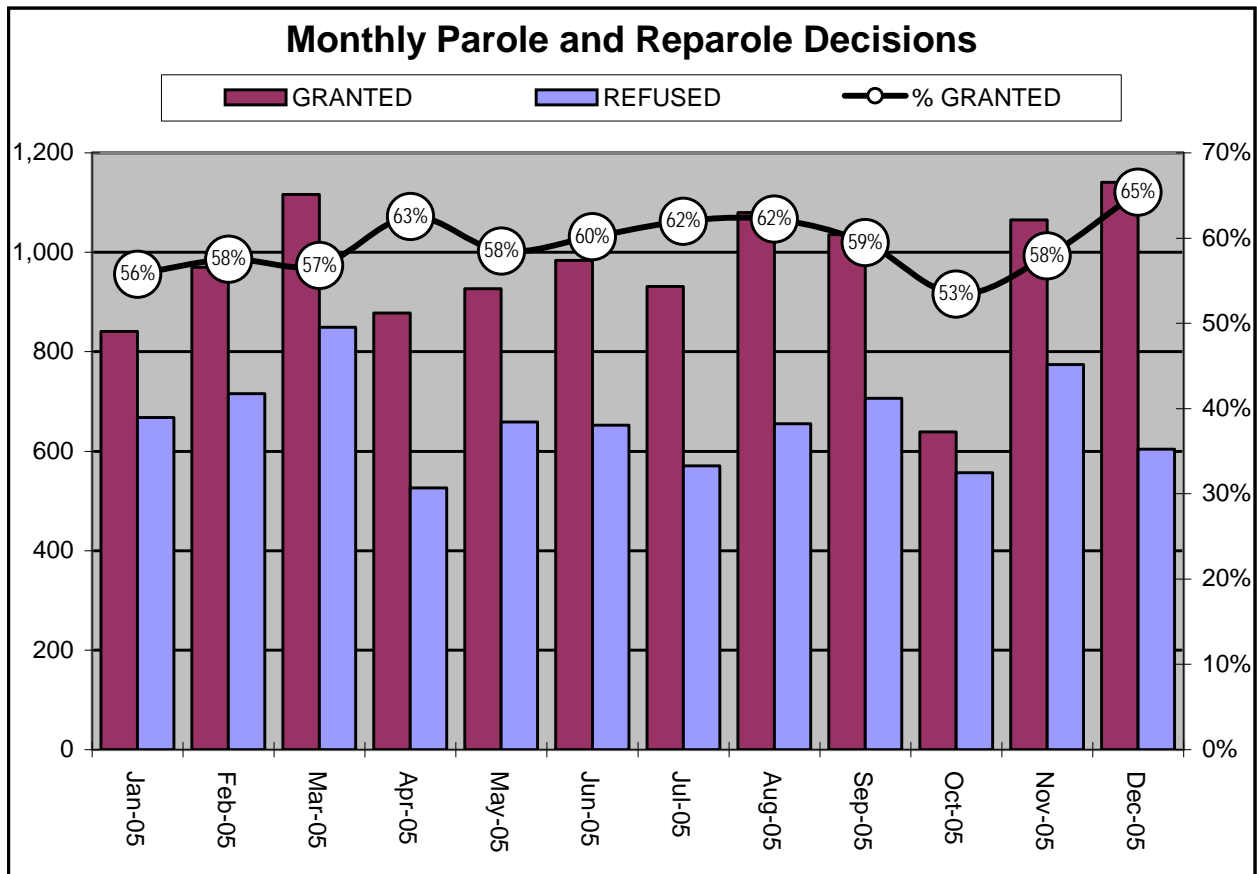


Table 8
MONTHLY PAROLE and REPAROLE DECISIONS
December 2005

MONTH/YEAR	GRANTED	REFUSED	CONSIDERED	% GRANTED
Jan-05	841	668	1,509	56%
Feb-05	970	716	1,686	58%
Mar-05	1,116	849	1,965	57%
Apr-05	878	526	1,404	63%
May-05	927	659	1,586	58%
Jun-05	984	652	1,636	60%
Jul-05	931	571	1,502	62%
Aug-05	1,080	655	1,735	62%
Sep-05	1,036	706	1,742	59%
Oct-05	639	557	1,196	53%
Nov-05	1,065	774	1,839	58%
Dec-05	1,141	604	1,745	65%
Monthly Avg Prior 12 Mo	967	661	1,629	59%



PBPP Population Breakdown By Place of Incarceration/Jurisdiction – December 2005

Monthly Count of Board Actions							
	Non-SCI			SCI			
Type of Decision	Parole	Refuse	Total	Parole	Refuse	Total	Total Board Actions
January 2005	79	48	127	762	620	1,382	1,509
February 2005	78	54	132	892	662	1,554	1,686
March 2005	109	51	160	1,007	798	1,805	1,965
April 2005	66	16	82	812	510	1,322	1,404
May 2005	78	46	124	852	610	1,462	1,586
June 2005	71	34	105	913	618	1,531	1,636
July 2005	59	35	94	873	535	1,408	1,502
August 2005	98	30	128	982	625	1,607	1,735
September 2005	95	36	131	941	670	1,611	1,742
October 2005	62	29	91	578	527	1,105	1,196
November 2005	92	29	121	973	745	1,718	1,839
December 2005	96	30	126	1,047	572	1,619	1,745
2005 Total	983	438	1,421	10,632	7,492	18,124	19,545

Offender Status- December 2005					
Status	State Prison	County Prison	County Sentence	Other States Cases	Total
Supervision	13,754	1,217	3,533	2,642	21,146
Absconder	1,416	78	212	6	1,712
Detention	4,805	362	709	200	6,076
Total	19,975	1,657	4,454	2,848	28,934

PBPP Monthly Population Profile							
Offender Status	Jul 05	Aug 05	Sep 05	Oct 05	Nov 05	Dec 05	
State sentence from state institution	19,682	19,750	19,797	19,988	19,906	19,975	
Supervision	13,789	13,734	13,701	13,892	13,783	13,754	
Absconder	1,398	1,392	1,393	1,410	1,398	1,416	
Detention	4,495	4,624	4,703	4,686	4,725	4,805	
State sentence from County Prison	1,638	1,632	1,626	1,644	1,639	1,657	
Supervision	1,187	1,189	1,174	1,203	1,203	1,217	
Absconder	81	84	87	79	79	78	
Detention	370	359	365	362	357	362	
County sentence Prob & Parole	4,369	4,391	4,425	4,417	4,401	4,454	
Supervision	3,456	3,443	3,479	3,463	3,448	3,533	
Absconder	217	210	208	221	228	212	
Detention	696	738	738	733	725	709	
Other state's sentence Prob & Parole	2,799	2,812	2,824	2,828	2,848	2,848	
Supervision	2,571	2,597	2,597	2,597	2,633	2,642	
Absconder	24	17	16	10	9	6	
Detention	204	198	211	221	206	200	
PBPP Population end of month	28,488	28,585	28,672	28,877	28,794	28,934	

PBPP Population Breakdown By Place of Incarceration/Jurisdiction – December 2005

Additions and Deletions						
	Jul 05	Aug 05	Sep 05	Oct 05	Nov 05	Dec 05
Total Additions	1,079	1,284	1,240	1,256	1,078	1,156
State sentence - SCI	724	815	764	844	671	684
State sentence - Cnty Prison	38	73	74	77	62	78
County sentence Prob & Parole	201	221	237	184	187	231
Other state's sentence	116	175	165	151	158	163
Total Deletions	961	1,180	1,151	1,044	1,167	1,016
State sentence - SCI	580	717	683	617	734	586
<i>Technical Violator</i>	247	260	284	283	304	235
<i>Convicted Violator</i>	75	131	134	102	121	99
<i>Maximum Expiration</i>	230	291	230	208	279	226
<i>Other Case Closure</i>	28	35	35	24	30	26
State sentence - Cnty Prison	39	73	80	60	63	50
<i>Technical Violator</i>	16	27	24	17	15	13
<i>Convicted Violator</i>	3	6	10	9	9	2
<i>Maximum Expiration</i>	15	34	43	32	36	32
<i>Other Case Closure</i>	5	6	3	2	3	3
County sentence Prob & Parole	203	225	231	217	227	212
<i>Technical Violator</i>	39	45	49	46	46	28
<i>Convicted Violator</i>	17	17	29	29	27	22
<i>Maximum Expiration</i>	102	110	108	101	111	110
<i>Other Case Closure</i>	45	53	45	41	43	52
Other state's sentence	139	165	157	150	143	168
<i>Technical Violator</i>	3	2	1	1	0	0
<i>Convicted Violator</i>	0	2	2	1	1	2
<i>Maximum Expiration</i>	48	54	57	71	70	62
<i>Other Case Closure</i>	88	107	97	77	72	104
PBPP Population end of month	28,488	28,585	28,672	28,877	28,794	28,934