

# COMMONWEALTH OF PENNSYLVANIA

## Board of Probation and Parole

### MONTHLY STATISTICAL REPORT

February 2003



**Edward G. Rendell**  
Governor

Benjamin Martinez  
Acting Chairman

Allen Castor  
Member

Barbara K. Descher  
Member

Sean R. Ryan  
Member

Richard A. Kipp  
Member

Michael M. Webster  
Member

Gary R. Lucht  
Member

Lloyd A. White  
Member

Mary A. Achilles  
Victim Advocate

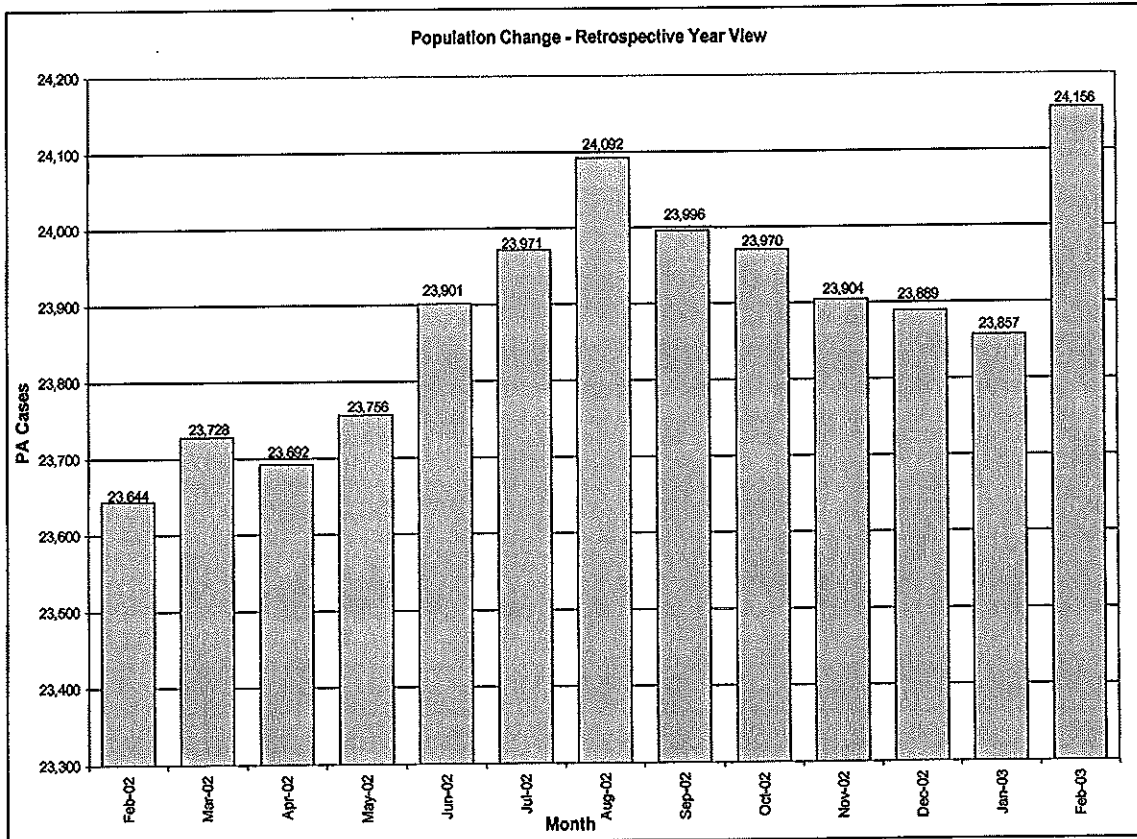
pbpp  
AN EQUAL OPPORTUNITY EMPLOYER



**Table 1**  
**WORKLOAD AND POPULATION CHANGES BY DISTRICT**  
**February 2003**

Type of Cases	Beginning FY Cases Jul-02	Current Month Cases	Fiscal YTD Index	Additions	Deletions		Number of Agents <sup>1</sup>	Average Workload	Total Workload <sup>2</sup>
					Recommits/ Revocations	Other Deletions			
CHESTER	1,925	1,944	101	46	36	38	29	135	3,914
PHILADELPHIA	7,503	7,546	101	189	95	102	116	119	13,771
<b>EASTERN REGION</b>	<b>9,428</b>	<b>9,490</b>	<b>101</b>	<b>235</b>	<b>131</b>	<b>140</b>	<b>145</b>	<b>122</b>	<b>17,685</b>
ALLENTOWN	2,441	2,402	98	86	48	46	36	125	4,491
HARRISBURG	2,704	2,870	106	109	22	47	45	127	5,712
SCRANTON	1,016	1,016	100	51	14	27	19	111	2,108
WILLIAMSPORT	689	670	97	17	9	13	14	104	1,455
<b>CENTRAL REGION</b>	<b>6,850</b>	<b>6,958</b>	<b>102</b>	<b>263</b>	<b>93</b>	<b>133</b>	<b>114</b>	<b>121</b>	<b>13,766</b>
ALTOONA	734	731	100	21	9	14	15	109	1,633
MERCER	2,293	2,438	106	372	19	33	31	152	4,710
ERIE	976	970	99	32	22	16	11	179	1,967
PITTSBURGH	3,690	3,569	97	114	61	67	59	120	7,062
<b>WESTERN REGION</b>	<b>7,683</b>	<b>7,708</b>	<b>100</b>	<b>539</b>	<b>111</b>	<b>130</b>	<b>116</b>	<b>132</b>	<b>15,362</b>
<b>TOTAL CASES SUPERVISED</b>	<b>23,971</b>	<b>24,156</b>	<b>101</b>	<b>1,037</b>	<b>335</b>	<b>403</b>	<b>375</b>	<b>126</b>	<b>46,813</b>

Pa Cases in Other States	2,203	2,261	103	42	2	30
--------------------------	-------	-------	-----	----	---	----



**Table 1 Notes:**

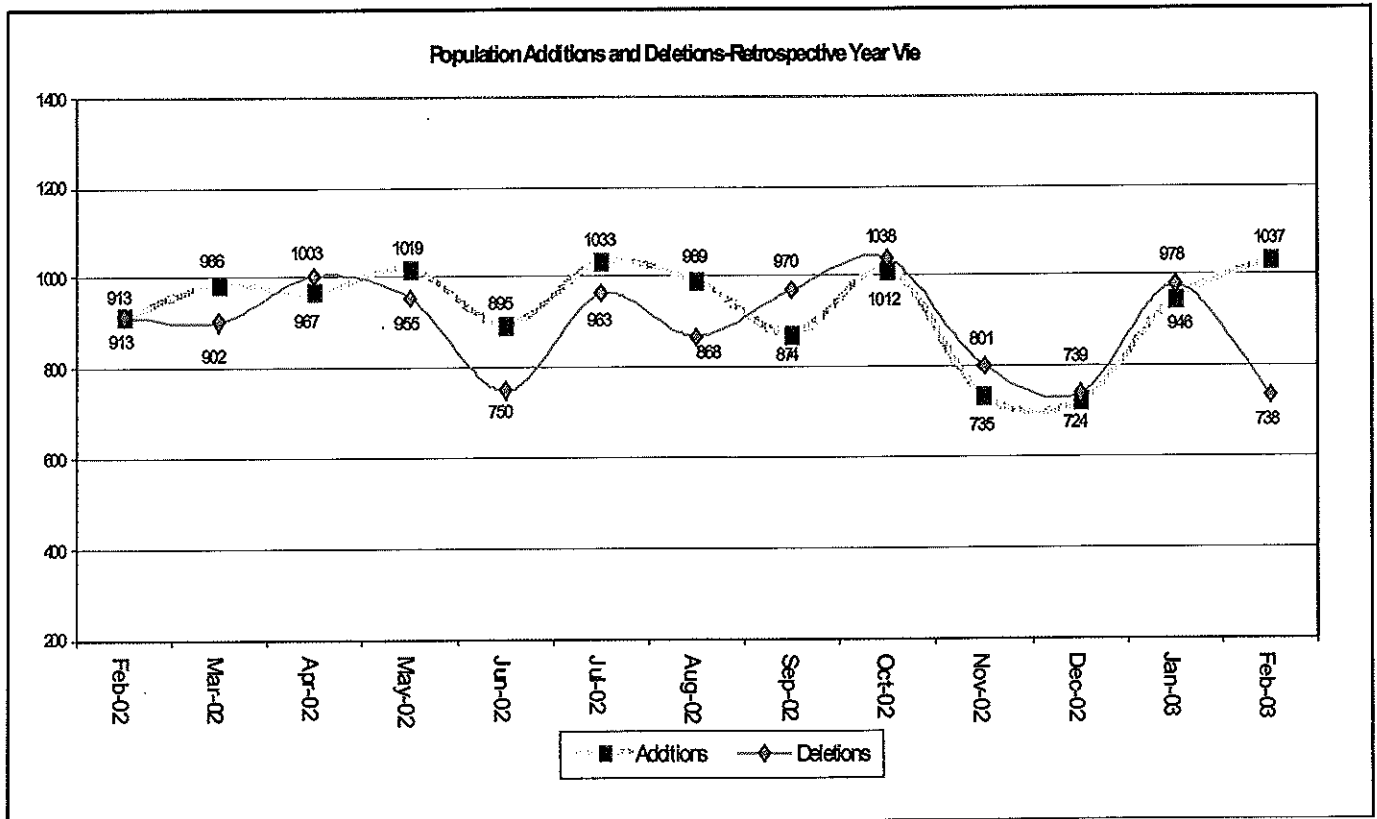
<sup>1</sup> Filled agent positions.

<sup>2</sup> New Workload Time Values effective July 2002.

**Table 2**  
**CASE ADDITIONS AND DELETIONS FOR SUPERVISED OFFENDERS IN PENNSYLVANIA**  
**February 2003**

Case Additions and Deletions	PAROLE	REPAROLE	SPECIAL COUNTY PROBATION	SPECIAL COUNTY PAROLE	OTHER STATES PAROLE	OTHER STATES PROBATION	MONTHLY TOTAL	FISCAL YTD TOTAL
<b>ADDITIONS</b>	459	97	250	163	12	56	1,037	7,360
<b>DELETIONS-RECOMMITMENTS</b>								
<b>Convicted Parole Violator</b>								
State Corrections	79	15	1	0	0	0	95	700
County Corrections	8	2	8	1	0	0	19	223
Other States Cases	0	0	0	0	0	0	0	3
<b>Total Convicted Parole Violator</b>	87	17	9	1	0	0	114	926
<b>Technical Parole Violator</b>								
State Corrections	126	54	6	0	0	0	186	1,784
County Corrections	15	1	18	1	0	0	35	426
Other States Cases	0	0	0	0	0	0	0	22
<b>Total Technical Parole Violator</b>	141	55	24	1	0	0	221	2,232
<b>TOTAL RECOMMITMENTS</b>	228	72	33	2	0	0	335	3,158
Deletion Maximum Discharge	170*	40	43	11	4	44	312	3,094
Deletion Death	13	1	2	0	2	1	19	107
Deletion Other	11	1	24	1	5	30	72	736
<b>TOTAL DELETIONS</b>	422	114	102	14	11	75	738	7,095

\*Includes program accounting adjustments.



**Table 3**  
**CASES BY ORIGINATING JURISDICTION**  
**BY REGION AND DISTRICT**  
**February 2003**

District/Region	PA Parole State Sentence				County		Other States		Total Cases
	from DOC	Boot Camp	County Prisons	Subtotal	Spec Prob	Spec Parole	Parole	Probation	
Chester	1,169	74	162	1,405	216	7	48	268	1,944
Philadelphia	6,203	278	273	6,754	385	9	94	304	7,546
<b>Eastern Region</b>	<b>7,372</b>	<b>352</b>	<b>435</b>	<b>8,159</b>	<b>601</b>	<b>16</b>	<b>142</b>	<b>572</b>	<b>9,490</b>
Allentown	1,533	85	348	1,966	135	7	47	247	2,402
Harrisburg	2,017	185	191	2,393	162	1	56	258	2,870
Scranton	406	19	297	722	83	6	31	174	1,016
Williamsport	419	27	62	508	56	11	16	79	670
<b>Central Region</b>	<b>4,375</b>	<b>316</b>	<b>898</b>	<b>5,589</b>	<b>436</b>	<b>25</b>	<b>150</b>	<b>758</b>	<b>6,958</b>
Altoona	433	13	58	504	111	45	11	60	731
Mercer	403	19	44	466	1,104	812	12	44	2,438
Erie	655	51	40	746	130	29	16	49	970
Pittsburgh	2,269	165	84	2,518	758	54	58	181	3,569
<b>Western Region</b>	<b>3,760</b>	<b>248</b>	<b>226</b>	<b>4,234</b>	<b>2,103</b>	<b>940</b>	<b>97</b>	<b>334</b>	<b>7,708</b>
<b>Total Cases</b>	<b>15,507</b>	<b>916</b>	<b>1,559</b>	<b>17,982</b>	<b>3,140</b>	<b>981</b>	<b>389</b>	<b>1,664</b>	<b>24,156</b>
<b>Percent of Total</b>	<b>64%</b>	<b>4%</b>	<b>6%</b>	<b>74%</b>	<b>13%</b>	<b>4%</b>	<b>2%</b>	<b>7%</b>	<b>100%</b>

**Table 4**  
**CASES BY GRADE OF SUPERVISION**  
**BY REGION AND DISTRICT**  
**February 2003**

District/Region	Reporting						Non-Reporting		Total Cases
	Enhanced	Maximum	Medium	Minimum	Not Classified	Subtotal	Absconder	Detainees	
Chester	137	688	455	199	10	1,489	110	345	1,944
Philadelphia	205	2,547	1,750	537	75	5,114	812	1,620	7,546
<b>Eastern Region</b>	<b>342</b>	<b>3,235</b>	<b>2,205</b>	<b>736</b>	<b>85</b>	<b>6,603</b>	<b>922</b>	<b>1,965</b>	<b>9,490</b>
Allentown	45	731	665	403	7	1,851	203	348	2,402
Harrisburg	102	1,071	734	333	25	2,265	151	454	2,870
Scranton	33	245	356	189	1	824	33	159	1,016
Williamsport	9	202	229	120	1	561	7	102	670
<b>Central Region</b>	<b>189</b>	<b>2,249</b>	<b>1,984</b>	<b>1,045</b>	<b>34</b>	<b>5,501</b>	<b>394</b>	<b>1,063</b>	<b>6,958</b>
Altoona	20	233	266	86	0	605	30	96	731
Mercer	17	513	1,219	272	70	2,091	92	255	2,438
Erie	28	354	257	139	12	790	34	146	970
Pittsburgh	148	1,183	998	311	31	2,671	203	695	3,569
<b>Western Region</b>	<b>213</b>	<b>2,283</b>	<b>2,740</b>	<b>808</b>	<b>113</b>	<b>6,157</b>	<b>359</b>	<b>1,192</b>	<b>7,708</b>
<b>Total Cases</b>	<b>744</b>	<b>7,767</b>	<b>6,929</b>	<b>2,589</b>	<b>232</b>	<b>18,261</b>	<b>1,675</b>	<b>4,220</b>	<b>24,156</b>
<b>Percent of Total</b>	<b>3%</b>	<b>32%</b>	<b>29%</b>	<b>11%</b>	<b>1%</b>	<b>76%</b>	<b>7%</b>	<b>17%</b>	<b>100%</b>

**Table 5**  
**CASES BY SEX AND RACE**  
**BY REGION AND DISTRICT**  
**February 2003**

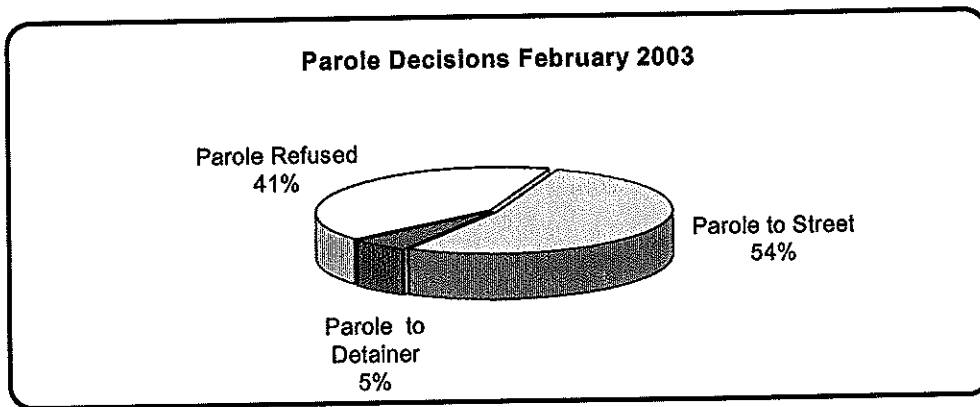
District/Region	Male			Female			Percent Male	Percent Female	Total Cases
	White	Non White	Total	White	Non White	Total			
Chester	715	1,069	1,784	96	64	160	92%	8%	1,944
Philadelphia	832	6,219	7,051	85	410	495	93%	7%	7,546
<b>EASTERN REGION</b>	<b>1,547</b>	<b>7,288</b>	<b>8,835</b>	<b>181</b>	<b>474</b>	<b>655</b>	<b>93%</b>	<b>7%</b>	<b>9,490</b>
Allentown	1,008	1,124	2,132	162	108	270	89%	11%	2,402
Harrisburg	1,275	1,268	2,543	177	150	327	89%	11%	2,870
Scranton	728	160	888	99	29	128	87%	13%	1,016
Williamsport	471	71	542	106	22	128	81%	19%	670
<b>CENTRAL REGION</b>	<b>3,482</b>	<b>2,623</b>	<b>6,105</b>	<b>544</b>	<b>309</b>	<b>853</b>	<b>88%</b>	<b>12%</b>	<b>6,958</b>
Altoona	587	76	663	59	9	68	91%	9%	731
Mercer	1,619	364	1,983	375	80	455	81%	19%	2,438
Erie	547	319	866	64	40	104	89%	11%	970
Pittsburgh	1,420	1,790	3,210	173	186	359	90%	10%	3,569
<b>WESTERN REGION</b>	<b>4,173</b>	<b>2,549</b>	<b>6,722</b>	<b>671</b>	<b>315</b>	<b>986</b>	<b>87%</b>	<b>13%</b>	<b>7,708</b>
<b>TOTAL CASES</b>	<b>9,202</b>	<b>12,460</b>	<b>21,662</b>	<b>1,396</b>	<b>1,098</b>	<b>2,494</b>	<b>90%</b>	<b>10%</b>	<b>24,156</b>

**Table 6**  
**CASES BY EMPLOYMENT STATUS**  
**BY REGION AND DISTRICT**  
**February 2003**

District/Region	Employed	Unemployed	Unemployment Rate	Unable to Work	Unknown	Non Reporting	Total
Chester	708	520	42%	256	5	455	1,944
Philadelphia	2,446	2,069	46%	591	8	2,432	7,546
<b>EASTERN REGION</b>	<b>3,154</b>	<b>2,589</b>	<b>45%</b>	<b>847</b>	<b>13</b>	<b>2,887</b>	<b>9,490</b>
Allentown	898	711	44%	231	11	551	2,402
Harrisburg	1,524	411	21%	329	1	605	2,870
Scranton	534	154	22%	135	1	192	1,016
Williamsport	315	147	32%	99	0	109	670
<b>CENTRAL REGION</b>	<b>3,271</b>	<b>1,423</b>	<b>30%</b>	<b>794</b>	<b>13</b>	<b>1,457</b>	<b>6,958</b>
Altoona	383	99	21%	123	0	126	731
Mercer	1,071	622	37%	398	0	347	2,438
Erie	393	192	33%	205	0	180	970
Pittsburgh	1,505	649	30%	517	0	898	3,569
<b>WESTERN REGION</b>	<b>3,352</b>	<b>1,562</b>	<b>32%</b>	<b>1,243</b>	<b>0</b>	<b>1,551</b>	<b>7,708</b>
<b>TOTAL CASES</b>	<b>9,777</b>	<b>5,574</b>	<b>36%</b>	<b>2,884</b>	<b>26</b>	<b>5,895</b>	<b>24,156</b>

**Table 7  
BOARD DECISIONS  
February 2003**

Type of Decision	Total
Parole to Street	677
Parole to Detainer	70
Parole Refused	526
<b>Total Considered</b>	<b>1,273</b>
<b>Percent Granted</b>	<b>59%</b>
Recommitments	506
Refer to Prior Action	222
Assigned by Courts	481
Other Decisions	686
<b>Total Decisions</b>	<b>3,168</b>



**Table 8  
HEARINGS AND INTERVIEWS  
February 2003**

Type of Decision	Board Members	Panels	Hearing Examiners	Total
<b>HEARINGS</b>				
Preliminary			97	97
Preliminary/Detention			32	32
Violation			172	172
Violation/Detention			56	56
Detention			42	42
Revocation			107	107
Revocation/Violation			12	12
Probable Cause Out-of State			20	20
Panel		43		43
<b>Total Hearings</b>		<b>43</b>	<b>538</b>	<b>581</b>
<b>INTERVIEWS</b>				
Parole Minimum	13	275	491	779
Review	16	252	218	486
Reparole Review	8	150	154	312
Application		11	1	12
Victim Input			6	6
<b>Total Interviews</b>	<b>37</b>	<b>688</b>	<b>870</b>	<b>1,595</b>

**Table 9**  
**MONTHLY PAROLING DECISIONS**  
**February 2003**

MONTH/YEAR	PAROLE GRANTED	PAROLE REFUSED	TOTAL CONSIDERED	% GRANTED
Feb-02	751	657	1,408	53%
Mar-02	791	776	1,567	50%
Apr-02	719	758	1,477	49%
May-02	788	808	1,596	49%
Jun-02	649	652	1,301	50%
Jul-02	733	701	1,434	51%
Aug-02	897	782	1,679	53%
Sep-02	751	738	1,489	50%
Oct-02	718	664	1,382	52%
Nov-02	516	514	1,030	50%
Dec-02	851	799	1,650	52%
Jan-03	772	654	1,426	54%
Feb-03	747	526	1,273	59%
<b>Monthly Avg Prior 12 Mo</b>	<b>745</b>	<b>695</b>	<b>1439</b>	<b>52%</b>

