

COMMONWEALTH OF PENNSYLVANIA

Board of Probation and Parole

MONTHLY STATISTICAL REPORT

August 2001



Tom Ridge
Governor

William F. Ward
Chairman

Allen Castor
Member

Benjamin Martinez
Member

Barbara K. Descher
Member

Sean R. Ryan
Member

Richard A. Kipp
Member

Michael M. Webster
Member

Gary R. Lucht
Member

Lloyd A. White
Member

Mary A. Achilles
Victim Advocate

pbpp
AN EQUAL OPPORTUNITY EMPLOYER

Table 1
WORKLOAD AND POPULATION CHANGES BY DISTRICT
August 2001

Type of Cases	Beginning FY Cases 7/1/00	Current Month Cases	Fiscal YTD Index	Additions	Deletions		Number of Agents	Average Workload	Total Workload
					Recommits/ Revocations	Other Deletions			
CHESTER	1,975	1,953	99	62	30	78	30	123	3,687
PHILADELPHIA	7,313	7,362	101	325	165	144*	102	133	13,530
EASTERN REGION	9,288	9,315	100	387	195	222	132	130	17,217
ALLENTOWN	2,430	2,341	96	88	75	98	32	142	4,546
HARRISBURG	2,606	2,644	101	122	47	65	36	169	6,086
SCRANTON	1,056	1,027	97	50	17	36	15	156	2,343
WILLIAMSPORT	650	645	99	24	10	14	12	163	1,959
CENTRAL REGION	6,742	6,657	99	284	149	213	95	157	14,935
ALTOONA	772	751	97	22	14	30	15	137	2,061
MERCER	2,195	2,076	95	134	38	193	28	186	5,207
ERIE	949	918	97	40	17	28	15	124	1,859
PITTSBURGH	3,789	3,746	99	138	59	72	57	133	7,591
WESTERN REGION	7,705	7,491	97	334	128	323	115	145	16,718
TOTAL CASES SUPERVISED	23,735	23,463	99	1,005	472	758	342	143	48,870

*Select program accounting adjustments were made.

Pa Cases in Other States	2,269	2,302	101	41	4	5*
--------------------------	-------	-------	-----	----	---	----

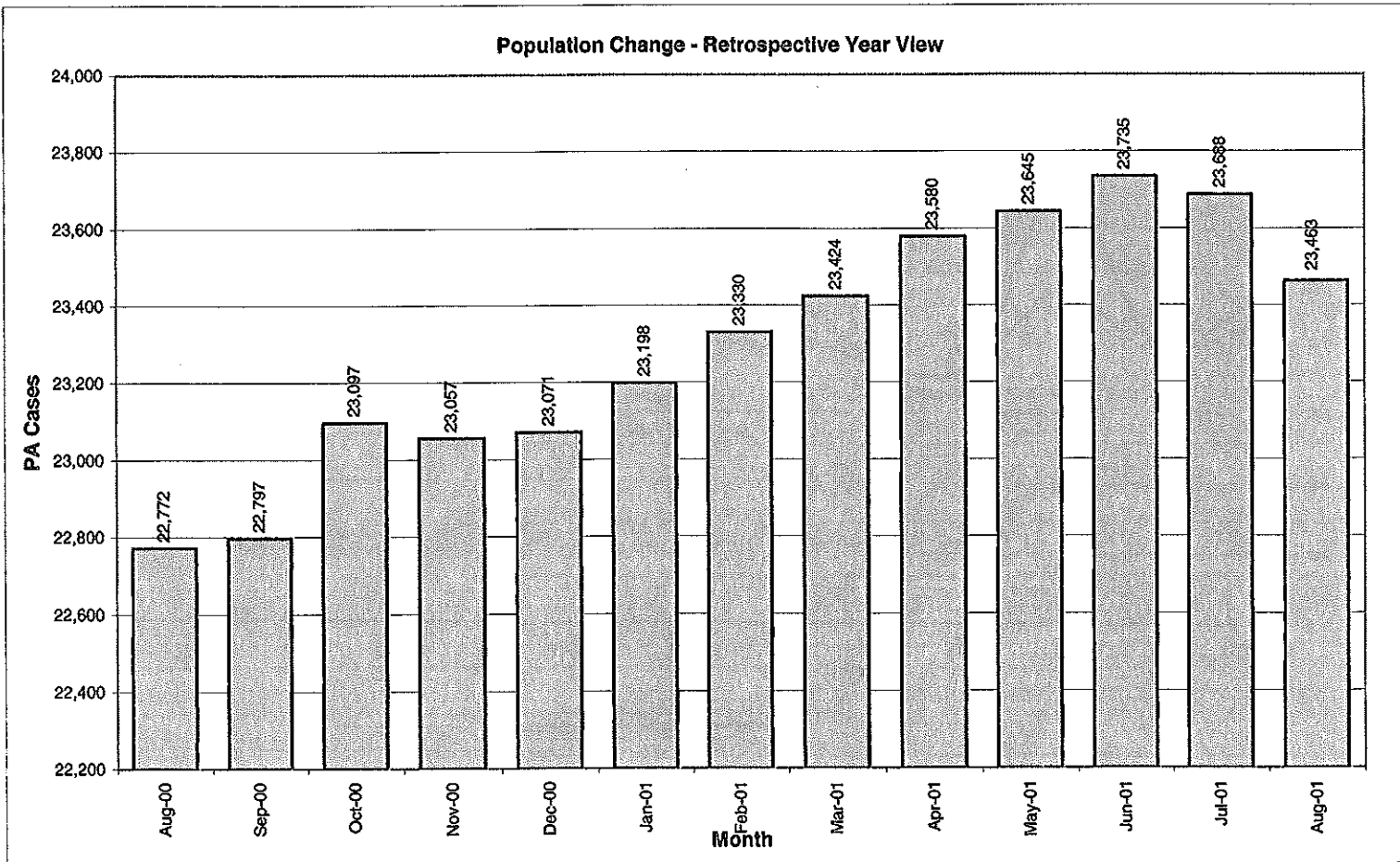
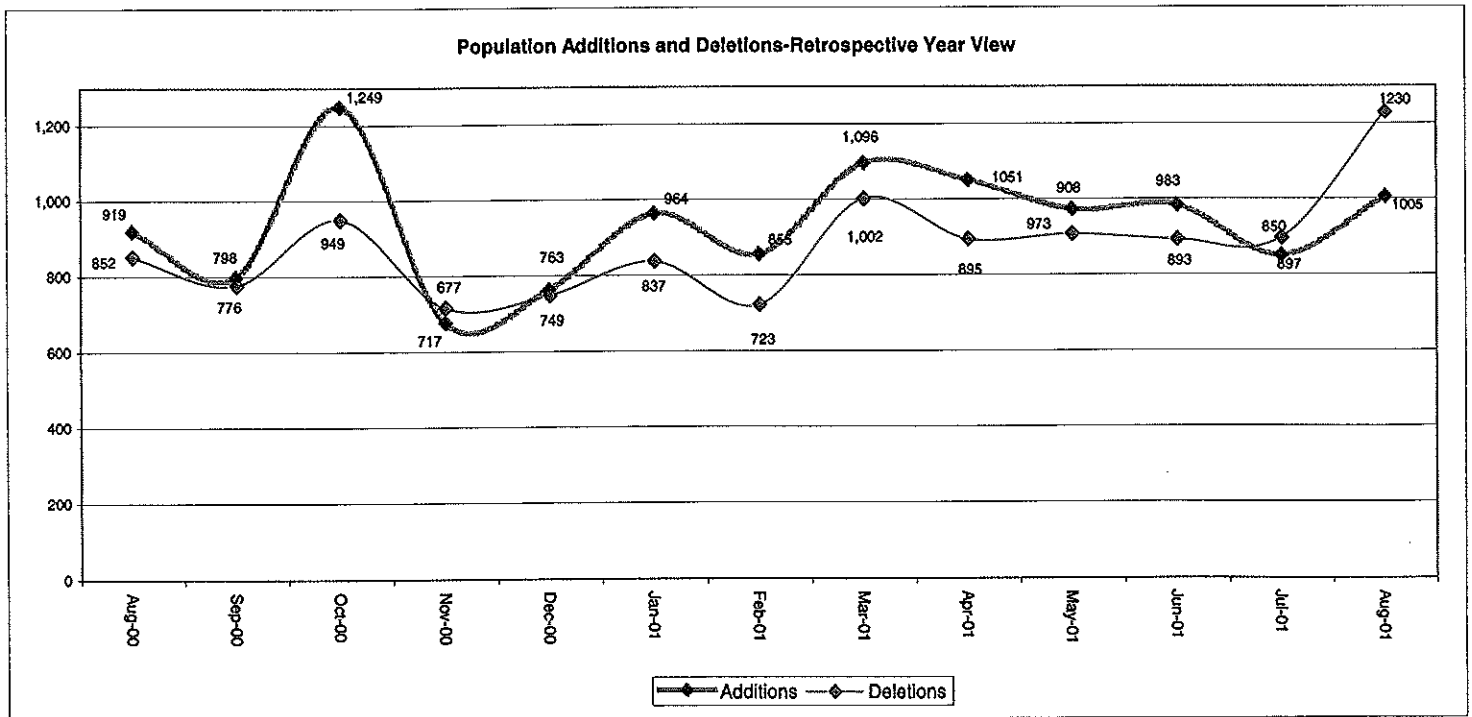


Table 2
CASE ADDITIONS AND DELETIONS FOR SUPERVISED OFFENDERS IN PENNSYLVANIA
August 2001

Case Additions and Deletions	PAROLE	REPAROLE	SPECIAL COUNTY PROBATION	SPECIAL COUNTY PAROLE	OTHER STATES' PAROLE	OTHER STATES' PROBATION	MONTHLY TOTAL	FISCAL YTD TOTAL
ADDITIONS	614	132	110	64	14	71	1,005	1,855
DELETIONS-RECOMMITMENTS								
Convicted Parole Violator								
State Corrections	72	20	2	0	0	0	94	160
County Corrections	12	2	11	5	0	0	30	51
Other States Cases	0	0	0	0	0	0	0	0
Total Convicted Parole Violator	84	22	13	5	0	0	124	211
Technical Parole Violator								
State Corrections	208	64	2	0	0	0	274	542
County Corrections	33	4	20	13	0	0	70	134
Other States Cases	1	0	1	0	0	2	4	6
Total Technical Parole Violator	242	68	23	13	0	2	348	682
TOTAL RECOMMITMENTS	326	90	36	18	0	2	472	893
Deletion Maximum Discharge	285	55	96	88	10	80	614	990
Deletion Death	9	3	0	1	0	1	14	26
Deletion Other	31*	0	39	18	6	36	130	218
TOTAL DELETIONS	651	148	171	125	16	119	1,230	2,127

*Select program accounting adjustments were made.

Corrected for FY



**Table 3
CASES BY ORIGINATING JURISDICTION
BY REGION AND DISTRICT
August 2001**

District/Region	PA Parole State Sentence				County		Other States		Total Cases
	from DOC	Boot Camp	Cnty Prisons	Subtotal	Spec Prob	Spec Parole	Parole	Probation	
Chester	1,250	82	186	1,518	156	6	32	241	1,953
Philadelphia	6,177	130	380	6,687	298	16	98	263	7,362
Eastern Region	7,427	212	566	8,205	454	22	130	504	9,315
Allentown	1,506	65	356	1,927	128	3	45	238	2,341
Harrisburg	1,891	131	207	2,229	120	2	64	229	2,644
Scranton	402	27	317	746	78	5	30	168	1,027
Williamsport	423	17	73	513	45	6	12	69	645
Central Region	4,222	240	953	5,415	371	16	151	704	6,657
Altoona	405	23	63	491	124	79	11	46	751
Mercer	391	18	47	456	809	744	18	49	2,076
Erie	602	48	41	691	126	35	12	54	918
Pittsburgh	2,373	183	72	2,628	784	100	56	178	3,746
Western Region	3,771	272	223	4,266	1,843	958	97	327	7,491
Total Cases	15,420	724	1,742	17,886	2,668	996	378	1,535	23,463
Percent of Total	66%	3%	7%	76%	11%	4%	2%	7%	100%

**Table 4
CASES BY GRADE OF SUPERVISION
BY REGION AND DISTRICT
August 2001**

District/Region	Reporting						Non-Reporting		Total Cases
	Enhanced	Maximum	Medium	Minimum	Not Classified	Subtotal	Absconder	Detainees	
Chester	181	680	365	226	10	1,462	92	399	1,953
Philadelphia	461	2,367	1,579	534	109	5,050	786	1,526	7,362
Eastern Region	642	3,047	1,944	760	119	6,512	878	1,925	9,315
Allentown	98	711	637	356	4	1,806	179	356	2,341
Harrisburg	97	806	673	375	64	2,015	147	482	2,644
Scranton	17	236	385	185	0	823	27	177	1,027
Williamsport	15	197	197	153	1	563	9	73	645
Central Region	227	1,950	1,892	1,069	69	5,207	362	1,088	6,657
Altoona	37	209	259	104	13	622	30	99	751
Mercer	11	455	626	630	74	1,796	77	203	2,076
Erie	6	303	268	176	26	779	37	102	918
Pittsburgh	209	1,202	1,036	340	29	2,816	248	682	3,746
Western Region	263	2,169	2,189	1,250	142	6,013	392	1,086	7,491
Total Cases	1,132	7,166	6,025	3,079	330	17,732	1,632	4,099	23,463
Percent of Total	5%	31%	26%	13%	1%	76%	7%	17%	100%

Table 5
CASES BY SEX AND RACE
BY REGION AND DISTRICT
 August 2001

District/Region	Male			Female			Percent Male	Percent Female	Total Cases
	White	Non White	Total	White	Non White	Total			
Chester	719	1,089	1,808	85	60	145	93%	7%	1,953
Philadelphia	929	5,978	6,907	81	374	455	94%	6%	7,362
EASTERN REGION	1,648	7,067	8,715	166	434	600	94%	6%	9,315
Allentown	1031	1,063	2,094	142	105	247	89%	11%	2,341
Harrisburg	1172	1,199	2,371	156	117	273	90%	10%	2,644
Scranton	773	143	916	88	23	111	89%	11%	1,027
Williamsport	460	70	530	88	27	115	82%	18%	645
CENTRAL REGION	3,436	2,475	5,911	474	272	746	89%	11%	6,657
Altoona	578	81	659	83	9	92	88%	12%	751
Mercer	1402	311	1,713	310	53	363	83%	17%	2,076
Erie	538	269	807	75	36	111	88%	12%	918
Pittsburgh	1523	1,836	3,359	179	208	387	90%	10%	3,746
WESTERN REGION	4,041	2,497	6,538	647	306	953	87%	13%	7,491
TOTAL CASES	9,125	12,039	21,164	1,287	1,012	2,299	90%	10%	23,463

Table 6
CASES BY EMPLOYMENT STATUS
BY REGION AND DISTRICT
 August 2001

District/Region	Employed	Unemployed	Unemployment Rate	Unable to Work	Unknown	Non Reporting	Total
Chester	875	379	30%	207	1	491	1,953
Philadelphia	2,680	1850	41%	504	16	2,312	7,362
EASTERN REGION	3,555	2,229	39%	711	17	2,803	9,315
Allentown	1,109	358	24%	338	1	535	2,341
Harrisburg	1,400	402	22%	212	1	629	2,644
Scranton	548	148	21%	126	1	204	1,027
Williamsport	361	110	23%	91	1	82	645
CENTRAL REGION	3,418	1,018	23%	767	4	1,450	6,657
Altoona	409	104	20%	106	3	129	751
Mercer	1,009	569	36%	209	9	280	2,076
Erie	421	259	38%	98	1	139	918
Pittsburgh	1,678	731	30%	402	5	930	3,746
WESTERN REGION	3,517	1,663	32%	815	18	1,478	7,491
TOTAL CASES	10,490	4,910	32%	2,293	39	5,731	23,463

Table 7
BOARD DECISIONS
August 2001

Type of Decision		Total
Parole to Street		623
Parole to Detainer		74
Parole Refused		538
Total Considered	1,235	
Percent Granted	56%	
Recommitments		401
Refer to Prior Action		107
Assigned by Courts		214
Other Decisions		670
Total Decisions		2,627

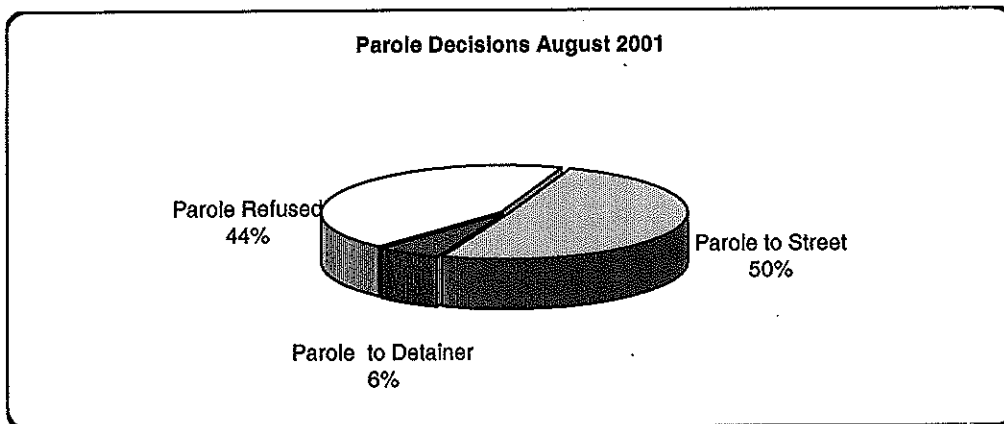


Table 8
HEARINGS AND INTERVIEWS
August 2001

Type of Decision	Board Members	Hearing Examiners	Total
HEARINGS			
Preliminary	0	63	63
Preliminary/Detention	0	27	27
Violation	0	270	270
Violation/Detention	0	68	68
Detention	0	46	46
Revocation	0	105	105
Revocation/Violation	0	7	7
Probable Cause Out-of State	0	14	14
Panel	64	0	64
Total Hearings	64	600	664
INTERVIEWS			
Parole Minimum	162	615	777
Review	287	422	709
Reparole Review	96	275	371
Victim Input	0	25	25
Total Interviews	545	1,337	1,882

Table 9
MONTHLY PAROLING DECISIONS
August 2001

MONTH/YEAR	PAROLE GRANTED	PAROLE REFUSED	TOTAL CONSIDERED	% GRANTED
Aug-00	833	931	1,764	47%
Sep-00	657	705	1,362	48%
Oct-00	708	717	1,425	50%
Nov-00	718	599	1,317	55%
Dec-00	792	705	1,497	53%
Jan-01	768	740	1,508	51%
Feb-01	803	615	1,418	57%
Mar-01	804	756	1,560	52%
Apr-01	683	639	1,322	52%
May-01	752	681	1,433	52%
Jun-01	616	620	1,236	50%
Jul-01	595	630	1,225	49%
Aug-01	697	538	1,235	56%
Monthly Avg Prior 12 Mo	716	662	1,378	52%

