

# COMMONWEALTH OF PENNSYLVANIA

## Board of Probation and Parole

### MONTHLY STATISTICAL REPORT

November 2000



**Tom Ridge**  
Governor

William F. Ward  
Chairman

Allen Castor  
Member

Benjamin Martinez  
Member

Barbara K. Descher  
Member

Nicholas P. Muller  
Member

Richard A. Kipp  
Member

Sean R. Ryan  
Member

Gary R. Lucht  
Member

Michael M. Webster  
Member

Mary A. Achilles  
Victim Advocate

pbpp  
AN EQUAL OPPORTUNITY EMPLOYER

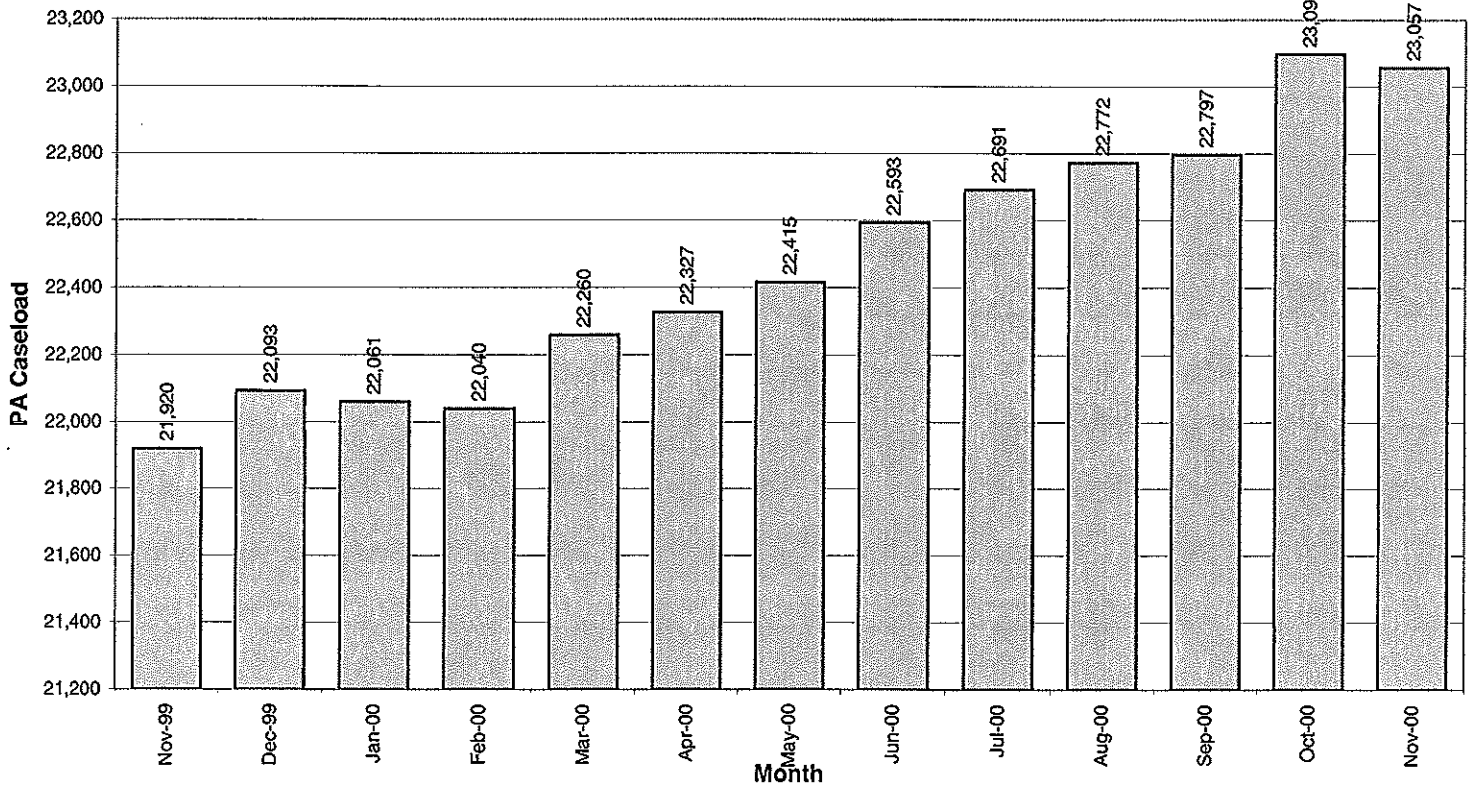


**Table 1  
CASELOAD, WORKLOAD, AND POPULATION CHANGES BY DISTRICT  
November 2000**

Type of Cases	Beginning FY Cases 7/1/00	Current Month Cases	Fiscal YTD Index	Additions	Deletions		Number of Agents	Average Caseload	Average Workload	Total Workload
					Recommits/ Revocations	Other Deletions				
					CHESTER	1,865				
PHILADELPHIA	6,867	6,939	101	228	136	119	104	67	121	12,555
<b>EASTERN REGION</b>	<b>8,732</b>	<b>8,871</b>	<b>102</b>	<b>286</b>	<b>159</b>	<b>155</b>	<b>134</b>	<b>66</b>	<b>120</b>	<b>16,130</b>
ALLENTOWN	2,223	2,335	105	87	29	28	35	67	119	4,174
HARRISBURG	2,540	2,598	102	65	38	25	37	70	161	5,972
SCRANTON	1,050	1,095	104	39	20	25	16	68	150	2,397
WILLIAMSPORT	641	654	102	15	10	15	12	55	150	1,805
<b>CENTRAL REGION</b>	<b>6,454</b>	<b>6,682</b>	<b>104</b>	<b>206</b>	<b>97</b>	<b>93</b>	<b>100</b>	<b>67</b>	<b>143</b>	<b>14,347</b>
ALTOONA	766	750	98	25	18	6	14	54	136	1,904
MERCER	1,897	2,036	107	31	18	39	32	64	138	4,430
ERIE	894	921	103	29	18	15	15	61	125	1,882
PITTSBURGH	3,850	3,797	99	100	56	43	57	67	134	7,634
<b>WESTERN REGION</b>	<b>7,407</b>	<b>7,504</b>	<b>101</b>	<b>185</b>	<b>110</b>	<b>103</b>	<b>118</b>	<b>64</b>	<b>134</b>	<b>15,850</b>
<b>TOTAL CASES SUPERVISED</b>	<b>22,593</b>	<b>23,057</b>	<b>102</b>	<b>677</b>	<b>366</b>	<b>351</b>	<b>352</b>	<b>66</b>	<b>132</b>	<b>46,326</b>

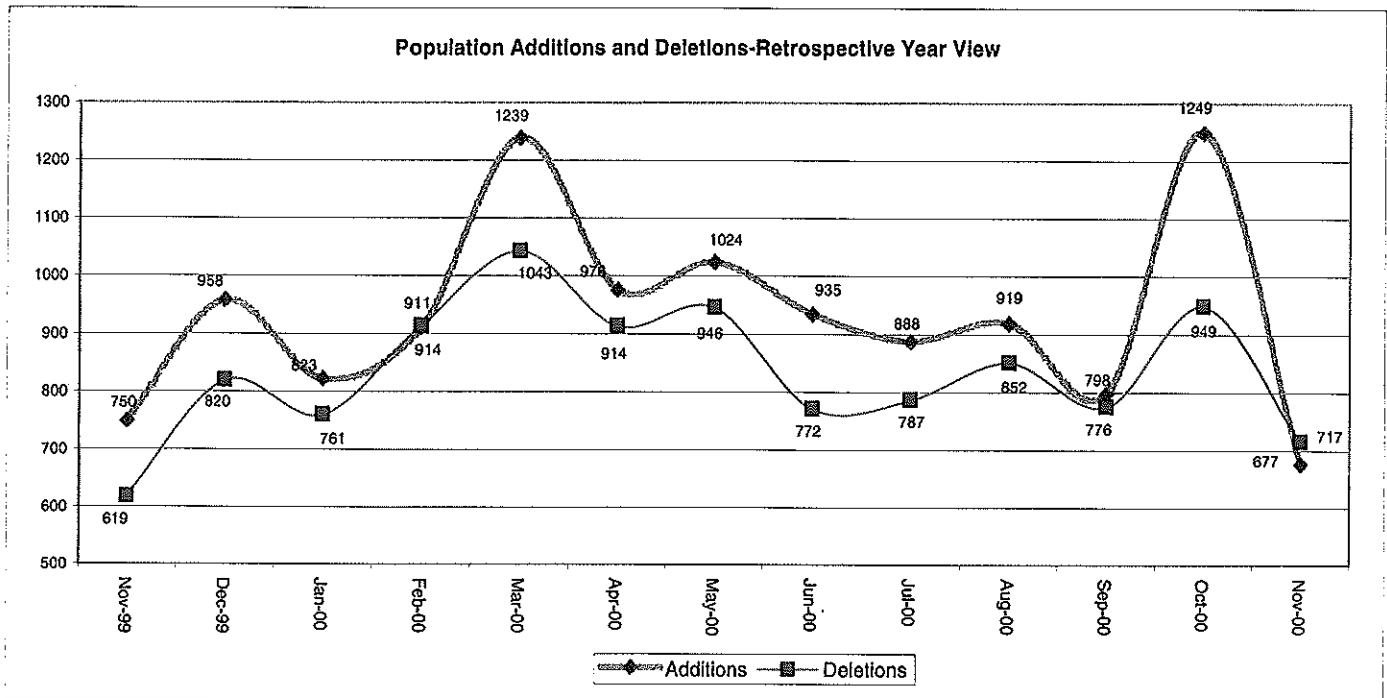
Pa Cases in Other States	2,314	2,330	101	50	6	21
--------------------------	-------	-------	-----	----	---	----

**Caseload Population Change - Retrospective Year View**



**Table 2**  
**CASE ADDITIONS AND DELETIONS FOR SUPERVISED CASELOAD IN PENNSYLVANIA**  
**November 2000**

Case Additions and Deletions	PAROLE	REPAROLE	SPECIAL COUNTY PROBATION	SPECIAL COUNTY PAROLE	OTHER STATES' PAROLE	OTHER STATES' PROBATION	MONTHLY TOTAL	FISCAL YTD TOTAL
<b>ADDITIONS</b>	404	117	67	21	20	48	677	4,529
<b>DELETIONS-RECOMMITMENTS</b>								
<b>Convicted Parole Violator</b>								
State Corrections	50	12	0	0	0	0	62	364
County Corrections	3	1	2	5	0	0	11	89
Other States Cases	0	0	0	0	1	2	3	10
<b>Total Convicted Parole Violator</b>	53	13	2	5	1	2	76	463
<b>Technical Parole Violator</b>								
State Corrections	179	56	3	0	0	0	238	1,099
County Corrections	14	5	14	12	0	0	45	238
Other States Cases	3	0	0	0	1	3	7	27
<b>Total Technical Parole Violator</b>	196	61	17	12	1	3	290	1,364
<b>TOTAL RECOMMITMENTS</b>	249	74	19	17	2	5	366	1,827
Deletion Maximum Discharge	162	37	31	26	7	21	284	1,805
Deletion Death	10	0	1	0	0	0	11	63
Deletion Other	7	1	19	1	5	23	56	385
<b>TOTAL DELETIONS</b>	428	112	70	44	14	49	717	4,080



**Table 3**  
**CASES BY ORIGINATING JURISDICTION**  
**BY REGION AND DISTRICT**  
**November 2000**

District/Region	PA Parole State Sentence				County		Other States		Total Cases
	from DOC	Boot Camp	Cnty Prisons	Subtotal	Spec Prob	Spec Parole	Parole	Probation	
Chester	1,278	66	189	1,533	124	8	35	232	1,932
Philadelphia	5,896	39	369	6,304	252	32	95	256	6,939
<b>Eastern Region</b>	<b>7,174</b>	<b>105</b>	<b>558</b>	<b>7,837</b>	<b>376</b>	<b>40</b>	<b>130</b>	<b>488</b>	<b>8,871</b>
Allentown	1,527	29	404	1,960	114	5	44	212	2,335
Harrisburg	1,872	97	226	2,195	94	8	64	237	2,598
Scranton	439	20	329	788	79	4	34	190	1,095
Williamsport	420	8	90	518	43	8	15	70	654
<b>Central Region</b>	<b>4,258</b>	<b>154</b>	<b>1,049</b>	<b>5,461</b>	<b>330</b>	<b>25</b>	<b>157</b>	<b>709</b>	<b>6,682</b>
Altoona	416	18	73	507	116	66	12	49	750
Mercer	432	10	36	478	777	718	19	44	2,036
Erie	620	17	55	692	106	42	12	69	921
Pittsburgh	2,422	74	98	2,594	842	110	55	196	3,797
<b>Western Region</b>	<b>3,890</b>	<b>119</b>	<b>262</b>	<b>4,271</b>	<b>1,841</b>	<b>936</b>	<b>98</b>	<b>358</b>	<b>7,504</b>
<b>Total Cases</b>	<b>15,322</b>	<b>378</b>	<b>1,869</b>	<b>17,569</b>	<b>2,547</b>	<b>1,001</b>	<b>385</b>	<b>1,555</b>	<b>23,057</b>
<b>Percent of Total</b>	<b>66%</b>	<b>2%</b>	<b>8%</b>	<b>76%</b>	<b>11%</b>	<b>4%</b>	<b>2%</b>	<b>7%</b>	<b>100%</b>

**Table 4**  
**CASES BY GRADE OF SUPERVISION**  
**BY REGION AND DISTRICT**  
**November 2000**

District/Region	Reporting						Non-Reporting		Total Cases
	Enhanced	Maximum	Medium	Minimum	Not Classified	Subtotal	Absconder	Detainees	
Chester	176	636	395	267	19	1,493	120	319	1,932
Philadelphia	505	2,454	1,507	583	37	5,086	705	1,148	6,939
<b>Eastern Region</b>	<b>681</b>	<b>3,090</b>	<b>1,902</b>	<b>850</b>	<b>56</b>	<b>6,579</b>	<b>825</b>	<b>1,467</b>	<b>8,871</b>
Allentown	63	719	604	361	67	1,814	169	352	2,335
Harrisburg	48	844	724	395	63	2,074	129	395	2,598
Scranton	22	274	384	164	47	891	31	173	1,095
Williamsport	7	143	223	164	30	567	11	76	654
<b>Central Region</b>	<b>140</b>	<b>1,980</b>	<b>1,935</b>	<b>1,084</b>	<b>207</b>	<b>5,346</b>	<b>340</b>	<b>996</b>	<b>6,682</b>
Altoona	26	218	238	106	40	628	22	100	750
Mercer	9	360	450	583	388	1,790	84	162	2,036
Erie	8	277	279	174	36	774	36	111	921
Pittsburgh	222	1,208	1,052	352	23	2,857	238	702	3,797
<b>Western Region</b>	<b>265</b>	<b>2,063</b>	<b>2,019</b>	<b>1,215</b>	<b>487</b>	<b>6,049</b>	<b>380</b>	<b>1,075</b>	<b>7,504</b>
<b>Total Cases</b>	<b>1,086</b>	<b>7,133</b>	<b>5,856</b>	<b>3,149</b>	<b>750</b>	<b>17,974</b>	<b>1,545</b>	<b>3,538</b>	<b>23,057</b>
<b>Percent of Total</b>	<b>5%</b>	<b>31%</b>	<b>25%</b>	<b>14%</b>	<b>3%</b>	<b>78%</b>	<b>7%</b>	<b>15%</b>	<b>100%</b>

**Table 5**  
**CASES BY SEX AND RACE**  
**BY REGION AND DISTRICT**  
**November 2000**

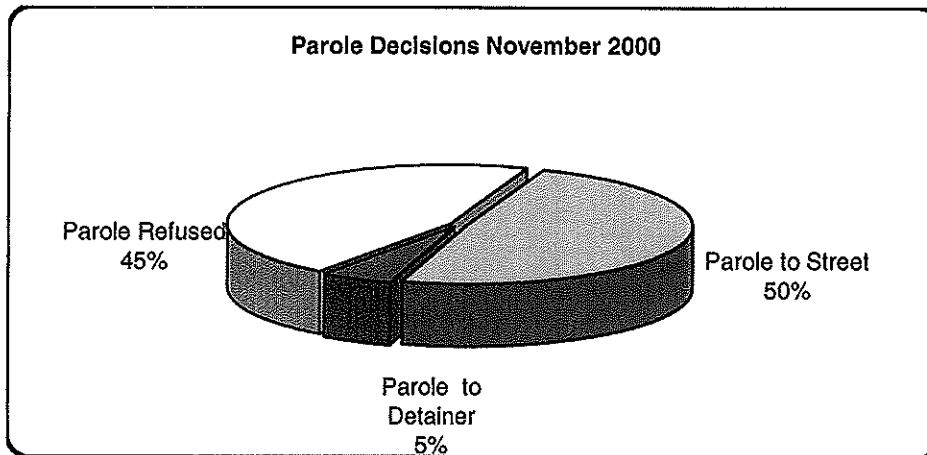
District/Region	Male			Female			Percent Male	Percent Female	Total Cases
	White	Non White	Total	White	Non White	Total			
Chester	735	1,064	1,799	77	56	133	93%	7%	1,932
Philadelphia	910	5,597	6,507	65	367	432	94%	6%	6,939
<b>EASTERN REGION</b>	<b>1,645</b>	<b>6,661</b>	<b>8,306</b>	<b>142</b>	<b>423</b>	<b>565</b>	<b>94%</b>	<b>6%</b>	<b>8,871</b>
Allentown	1,010	1,074	2,084	141	110	251	89%	11%	2,335
Harrisburg	1,145	1,190	2,335	136	127	263	90%	10%	2,598
Scranton	798	166	964	107	24	131	88%	12%	1,095
Williamsport	463	67	530	99	25	124	81%	19%	654
<b>CENTRAL REGION</b>	<b>3,416</b>	<b>2,497</b>	<b>5,913</b>	<b>483</b>	<b>286</b>	<b>769</b>	<b>88%</b>	<b>12%</b>	<b>6,682</b>
Altoona	580	88	668	77	5	82	89%	11%	750
Mercer	1,366	326	1,692	281	63	344	83%	17%	2,036
Erie	544	263	807	76	38	114	88%	12%	921
Pittsburgh	1,529	1,880	3,409	176	212	388	90%	10%	3,797
<b>WESTERN REGION</b>	<b>4,019</b>	<b>2,557</b>	<b>6,576</b>	<b>610</b>	<b>318</b>	<b>928</b>	<b>88%</b>	<b>12%</b>	<b>7,504</b>
<b>TOTAL CASES</b>	<b>9,080</b>	<b>11,715</b>	<b>20,795</b>	<b>1,235</b>	<b>1,027</b>	<b>2,262</b>	<b>90%</b>	<b>10%</b>	<b>23,057</b>

**Table 6**  
**CASES BY EMPLOYMENT STATUS**  
**BY REGION AND DISTRICT**  
**November 2000**

District/Region	Employed	Unemployed	Unemployment Rate	Unable to Work	Unknown	Non Reporting	Total
Chester	793	597	43%	103	0	439	1,932
Philadelphia	2,199	2,560	54%	311	16	1853	6,939
<b>EASTERN REGION</b>	<b>2,992</b>	<b>3,157</b>	<b>51%</b>	<b>414</b>	<b>16</b>	<b>2,292</b>	<b>8,871</b>
Allentown	1,156	297	20%	316	45	521	2,335
Harrisburg	1,148	643	36%	189	94	524	2,598
Scranton	552	210	28%	94	35	204	1,095
Williamsport	402	65	14%	61	39	87	654
<b>CENTRAL REGION</b>	<b>3,258</b>	<b>1,215</b>	<b>27%</b>	<b>660</b>	<b>213</b>	<b>1,336</b>	<b>6,682</b>
Altoona	408	85	17%	101	34	122	750
Mercer	655	514	44%	108	513	246	2,036
Erie	471	172	27%	97	34	147	921
Pittsburgh	1,545	980	39%	324	8	940	3,797
<b>WESTERN REGION</b>	<b>3,079</b>	<b>1,751</b>	<b>36%</b>	<b>630</b>	<b>589</b>	<b>1,455</b>	<b>7,504</b>
<b>TOTAL CASES</b>	<b>9,329</b>	<b>6,123</b>	<b>40%</b>	<b>1,704</b>	<b>818</b>	<b>5,083</b>	<b>23,057</b>

**Table 7**  
**BOARD DECISIONS**  
**November 2000**

Type of Decision	Total
Parole to Street	648
Parole to Detainer	70
Parole Refused	599
Total Considered	1,317
Percent Granted	55%
Recommitments	356
Refer to Prior Action	88
Assigned by Courts	335
Other Decisions	492
<b>Total Decisions</b>	<b>2,588</b>



**Table 8**  
**HEARINGS AND INTERVIEWS**  
**November 2000**

Type	Board Members	Hearing Examiners	Total
<b>HEARINGS</b>			
Preliminary	0	44	44
Preliminary/Detention	0	21	21
Violation	0	198	198
Violation/Detention	0	59	59
Detention	0	33	33
Revocation	0	83	83
Revocation/Violation	0	22	22
Probable Cause Out-of State	0	15	15
Panel	42	0	42
<b>Total Hearings</b>	<b>42</b>	<b>475</b>	<b>517</b>
<b>INTERVIEWS</b>			
Parole Minimum	219	655	874
Review	401	517	918
Reparole Review	167	284	451
<b>Victim Input</b>	<b>0</b>	<b>16</b>	<b>16</b>
<b>Total Interviews</b>	<b>787</b>	<b>1,472</b>	<b>2,259</b>

**Table 9**  
**MONTHLY PAROLING DECISIONS**  
**November 2000**

MONTH/YEAR	PAROLE GRANTED	PAROLE REFUSED	TOTAL CONSIDERED	% GRANTED
Nov-99	778	818	1,596	49%
Dec-99	574	684	1,258	46%
Jan-00	767	757	1,524	50%
Feb-00	655	710	1,365	48%
Mar-00	747	660	1,407	53%
Apr-00	699	767	1,466	48%
May-00	694	757	1,451	48%
Jun-00	723	750	1,473	49%
Jul-00	662	683	1,345	49%
Aug-00	833	931	1,764	47%
Sep-00	657	705	1,362	48%
Oct-00	708	717	1,425	50%
Nov-00	718	599	1,317	55%
<b>Monthly Avg Prior 12 Mo</b>	<b>758</b>	<b>784</b>	<b>1,542</b>	<b>49%</b>

