

# COMMONWEALTH OF PENNSYLVANIA

## Board of Probation and Parole

### MONTHLY STATISTICAL REPORT

January 2001



**Tom Ridge**  
Governor

William F. Ward  
Chairman

Allen Castor  
Member

Benjamin Martinez  
Member

Barbara K. Descher  
Member

Nicholas P. Muller  
Member

Richard A. Kipp  
Member

Sean R. Ryan  
Member

Gary R. Lucht  
Member

Michael M. Webster  
Member

Mary A. Achilles  
Victim Advocate

pbpp  
AN EQUAL OPPORTUNITY EMPLOYER

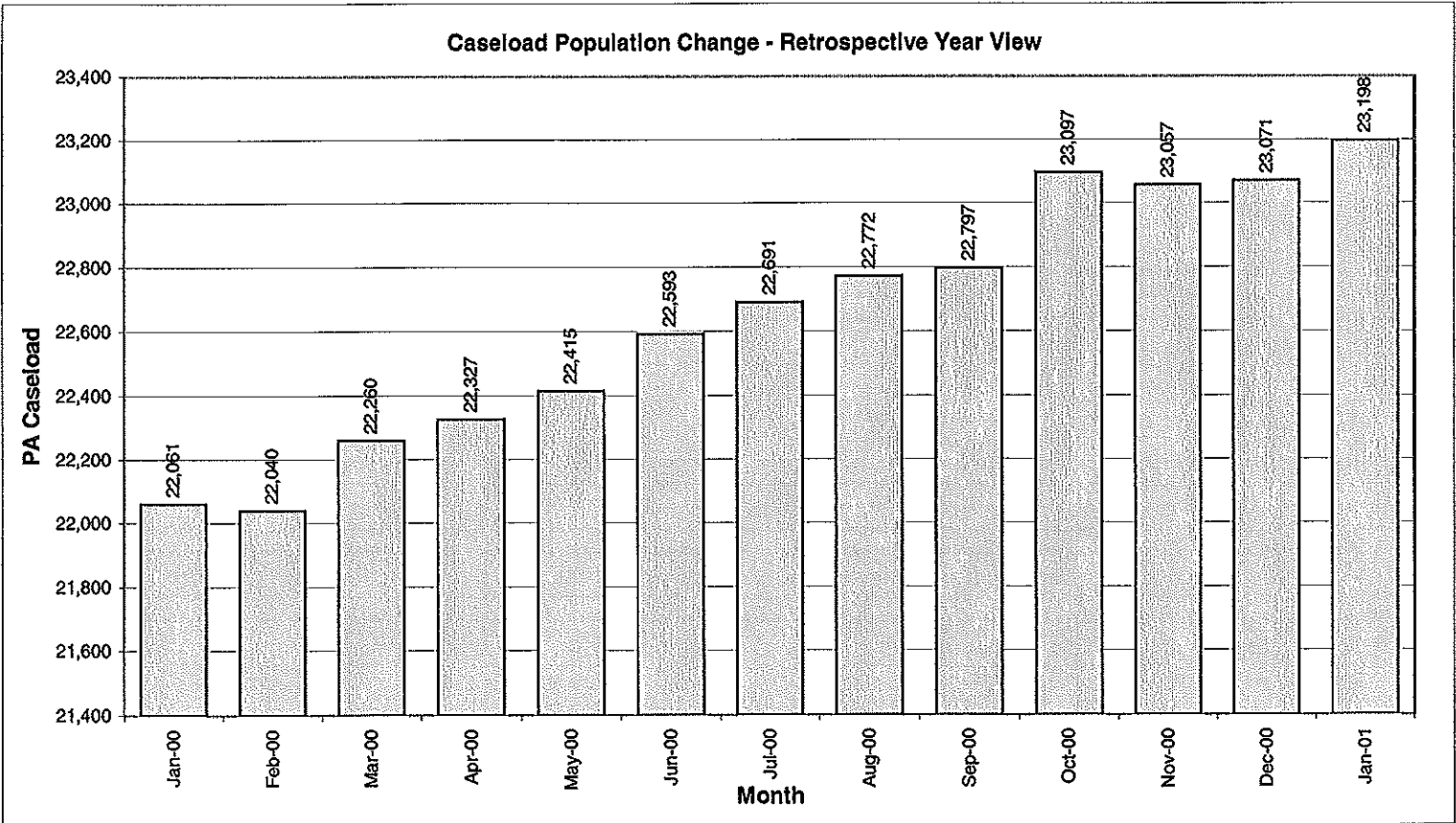


**Table 1  
CASELOAD, WORKLOAD, AND POPULATION CHANGES BY DISTRICT  
January 2001**

Type of Cases	Beginning FY Cases 7/1/00	Current Month Cases	Fiscal YTD Index	Additions	Deletions		Number of Agents	Average Caseload	Average Workload	Total Workload
					Recommits/ Revocations	Other Deletions				
CHESTER	1,865	1,966	105	57	29	41	30	66	126	3,781
PHILADELPHIA	6,867	7,032	102	246	101	115*	106	66	124	13,127
<b>EASTERN REGION</b>	<b>8,732</b>	<b>8,998</b>	<b>103</b>	<b>303</b>	<b>130</b>	<b>151</b>	<b>136</b>	<b>66</b>	<b>124</b>	<b>16,908</b>
ALLENTOWN	2,223	2,301	104	113	33	39	35	66	121	4,250
HARRISBURG	2,540	2,624	103	88	47	48	39	67	156	6,082
SCRANTON	1,050	1,083	103	42	26	48	17	64	142	2,413
WILLIAMSPORT	641	641	100	23	9	24	11	58	171	1,880
<b>CENTRAL REGION</b>	<b>6,454</b>	<b>6,649</b>	<b>103</b>	<b>266</b>	<b>115</b>	<b>159</b>	<b>102</b>	<b>65</b>	<b>143</b>	<b>14,624</b>
ALTOONA	766	751	98	32	9	19	14	54	135	1,883
MERCER	1,897	2,082	110	157	16	24	32	65	170	5,426
ERIE	894	911	102	45	23	29	16	57	113	1,802
PITTSBURGH	3,850	3,807	99	161	72	85	57	67	133	7,558
<b>WESTERN REGION</b>	<b>7,407</b>	<b>7,551</b>	<b>102</b>	<b>395</b>	<b>120</b>	<b>157</b>	<b>119</b>	<b>63</b>	<b>140</b>	<b>16,670</b>
<b>TOTAL CASES SUPERVISED</b>	<b>22,593</b>	<b>23,198</b>	<b>103</b>	<b>964</b>	<b>365</b>	<b>472</b>	<b>357</b>	<b>65</b>	<b>135</b>	<b>48,202</b>

\*Select program accounting adjustments were made.

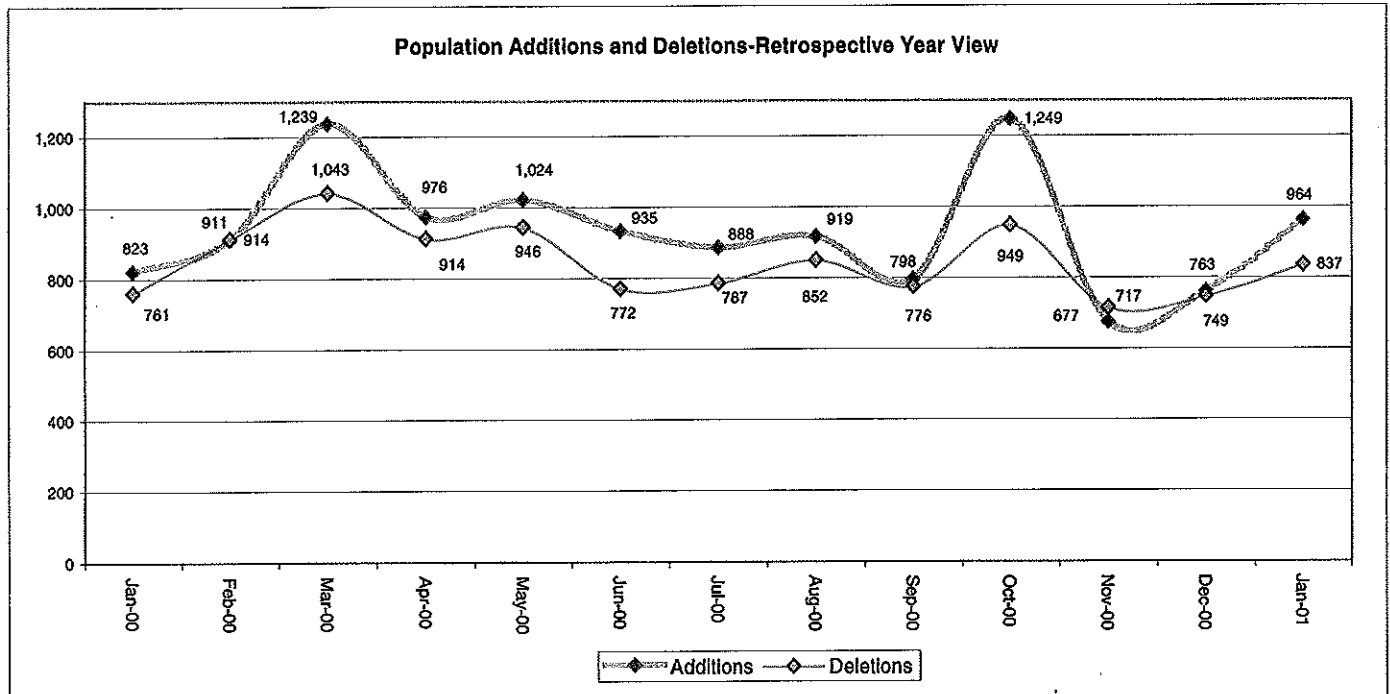
Pa Cases in Other States	2,314	2,360	102	36*	11	12
--------------------------	-------	-------	-----	-----	----	----



**Table 2**  
**CASE ADDITIONS AND DELETIONS FOR SUPERVISED CASELOAD IN PENNSYLVANIA**  
**January 2001**

Case Additions and Deletions	PAROLE	REPAROLE	SPECIAL COUNTY PROBATION	SPECIAL COUNTY PAROLE	OTHER STATES' PAROLE	OTHER STATES' PROBATION	MONTHLY TOTAL	FISCAL YTD TOTAL
<b>ADDITIONS</b>	575	113	123	71	15	67	964	6,256
<b>DELETIONS-RECOMMITMENTS</b>								
<b>Convicted Parole Violator</b>								
State Corrections	56	18	0	0	0	0	74	497
County Corrections	9	2	12	4	0	0	27	141
Other States Cases	4	0	0	0	0	0	4	14
<b>Total Convicted Parole Violator</b>	69	20	12	4	0	0	105	652
<b>Technical Parole Violator</b>								
State Corrections	158	49	2	0	0	0	209	1,528
County Corrections	15	5	17	5	0	0	42	327
Other States Cases	4	1	1	0	1	2	9	42
<b>Total Technical Parole Violator</b>	177	55	20	5	1	2	260	1,897
<b>TOTAL RECOMMITMENTS</b>	246	75	32	9	1	2	365	2,549
Deletion Maximum Discharge	230	50	44	16	6	43	389	2,527
Deletion Death	7	1	1	2	0	1	12	84
Deletion Other	12*	0	16	8	7	28	71	513
<b>TOTAL DELETIONS</b>	495	126	93	35	14	74	837	5,673

\*Select program accounting adjustments were made.



**Table 3**  
**CASES BY ORIGINATING JURISDICTION**  
**BY REGION AND DISTRICT**  
**January 2001**

District/Region	PA Parole State Sentence				County		Other States		Total Cases
	from DOC	Boot Camp	Cnty Prisons	Subtotal	Spec Prob	Spec Parole	Parole	Probation	
Chester	1,293	70	205	1,568	126	6	38	228	1,966
Philadelphia	5,969	35	384	6,388	265	25	93	261	7,032
<b>Eastern Region</b>	<b>7,262</b>	<b>105</b>	<b>589</b>	<b>7,956</b>	<b>391</b>	<b>31</b>	<b>131</b>	<b>489</b>	<b>8,998</b>
Allentown	1,497	26	391	1,914	113	4	43	227	2,301
Harrisburg	1,880	104	234	2,218	94	7	61	244	2,624
Scranton	431	19	346	796	76	2	32	177	1,083
Williamsport	421	7	87	515	42	7	11	66	641
<b>Central Region</b>	<b>4,229</b>	<b>156</b>	<b>1,058</b>	<b>5,443</b>	<b>325</b>	<b>20</b>	<b>147</b>	<b>714</b>	<b>6,649</b>
Altoona	415	15	75	505	112	72	10	52	751
Mercer	418	10	43	471	820	733	15	43	2,082
Erie	615	22	53	690	112	36	10	63	911
Pittsburgh	2,438	73	101	2,612	828	109	58	200	3,807
<b>Western Region</b>	<b>3,886</b>	<b>120</b>	<b>272</b>	<b>4,278</b>	<b>1,872</b>	<b>950</b>	<b>93</b>	<b>358</b>	<b>7,551</b>
<b>Total Cases</b>	<b>15,377</b>	<b>381</b>	<b>1,919</b>	<b>17,677</b>	<b>2,588</b>	<b>1,001</b>	<b>371</b>	<b>1,561</b>	<b>23,198</b>
<b>Percent of Total</b>	<b>66%</b>	<b>2%</b>	<b>8%</b>	<b>76%</b>	<b>11%</b>	<b>4%</b>	<b>2%</b>	<b>7%</b>	<b>100%</b>

**Table 4**  
**CASES BY GRADE OF SUPERVISION**  
**BY REGION AND DISTRICT**  
**January 2001**

District/Region	Reporting						Non-Reporting		Total Cases
	Enhanced	Maximum	Medium	Minimum	Not Classified	Subtotal	Absconder	Detainees	
Chester	172	633	395	257	34	1,491	118	357	1,966
Philadelphia	496	2,463	1,504	584	72	5,119	712	1,201	7,032
<b>Eastern Region</b>	<b>668</b>	<b>3,096</b>	<b>1,899</b>	<b>841</b>	<b>106</b>	<b>6,610</b>	<b>830</b>	<b>1,558</b>	<b>8,998</b>
Allentown	64	662	645	367	63	1,801	168	332	2,301
Harrisburg	54	839	752	396	42	2,083	133	408	2,624
Scranton	23	271	386	171	26	877	32	174	1,083
Williamsport	6	173	204	178	9	570	10	61	641
<b>Central Region</b>	<b>147</b>	<b>1,945</b>	<b>1,987</b>	<b>1,112</b>	<b>140</b>	<b>5,331</b>	<b>343</b>	<b>975</b>	<b>6,649</b>
Altoona	31	224	222	106	37	620	24	107	751
Mercer	9	426	605	765	63	1,868	78	136	2,082
Erie	8	255	287	168	46	764	31	116	911
Pittsburgh	215	1,180	1,053	371	44	2,863	230	714	3,807
<b>Western Region</b>	<b>263</b>	<b>2,085</b>	<b>2,167</b>	<b>1,410</b>	<b>190</b>	<b>6,115</b>	<b>363</b>	<b>1,073</b>	<b>7,551</b>
<b>Total Cases</b>	<b>1,078</b>	<b>7,126</b>	<b>6,053</b>	<b>3,363</b>	<b>436</b>	<b>18,056</b>	<b>1,636</b>	<b>3,606</b>	<b>23,198</b>
<b>Percent of Total</b>	<b>5%</b>	<b>31%</b>	<b>26%</b>	<b>14%</b>	<b>2%</b>	<b>78%</b>	<b>7%</b>	<b>16%</b>	<b>100%</b>

**Table 5**  
**CASES BY SEX AND RACE**  
**BY REGION AND DISTRICT**  
**January 2001**

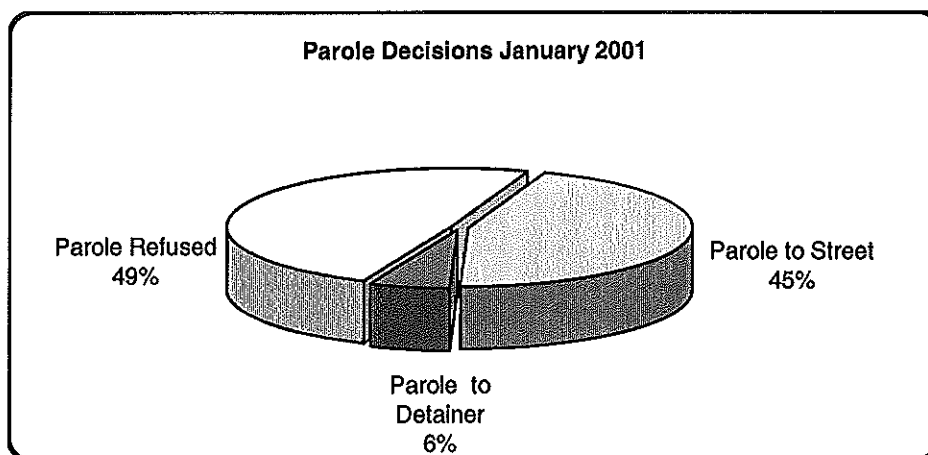
District/Region	Male			Female			Percent Male	Percent Female	Total Cases
	White	Non White	Total	White	Non White	Total			
Chester	735	1,089	1,824	83	59	142	93%	7%	1,966
Philadelphia	899	5684	6583	68	381	449	94%	6%	7032
<b>EASTERN REGION</b>	<b>1,634</b>	<b>6,773</b>	<b>8,407</b>	<b>151</b>	<b>440</b>	<b>591</b>	<b>93%</b>	<b>7%</b>	<b>8,998</b>
Allentown	996	1,056	2,052	134	115	249	89%	11%	2,301
Harrisburg	1,170	1,191	2,361	132	131	263	90%	10%	2,624
Scranton	798	163	961	100	22	122	89%	11%	1,083
Willamsport	458	67	525	92	24	116	82%	18%	641
<b>CENTRAL REGION</b>	<b>3,422</b>	<b>2,477</b>	<b>5,899</b>	<b>458</b>	<b>292</b>	<b>750</b>	<b>89%</b>	<b>11%</b>	<b>6,649</b>
Altoona	575	93	668	77	6	83	89%	11%	751
Mercer	1,400	315	1,715	301	66	367	82%	18%	2,082
Erie	537	264	801	76	34	110	88%	12%	911
Pittsburgh	1,529	1,885	3,414	179	214	393	90%	10%	3,807
<b>WESTERN REGION</b>	<b>4,041</b>	<b>2,557</b>	<b>6,598</b>	<b>633</b>	<b>320</b>	<b>953</b>	<b>87%</b>	<b>13%</b>	<b>7,551</b>
<b>TOTAL CASES</b>	<b>9,097</b>	<b>11,807</b>	<b>20,904</b>	<b>1,242</b>	<b>1,052</b>	<b>2,294</b>	<b>90%</b>	<b>10%</b>	<b>23,198</b>

**Table 6**  
**CASES BY EMPLOYMENT STATUS**  
**BY REGION AND DISTRICT**  
**January 2001**

District/Region	Employed	Unemployed	Unemployment Rate	Unable to Work	Unknown	Non Reporting	Total
Chester	773	619	44%	95	4	475	1,966
Philadelphia	2,155	2,628	55%	306	30	1,913	7,032
<b>EASTERN REGION</b>	<b>2,928</b>	<b>3,247</b>	<b>53%</b>	<b>401</b>	<b>34</b>	<b>2,388</b>	<b>8,998</b>
Allentown	1,158	329	22%	308	6	500	2,301
Harrisburg	1,181	689	37%	210	3	541	2,624
Scranton	577	192	25%	98	10	206	1,083
Willamsport	404	87	18%	77	2	71	641
<b>CENTRAL REGION</b>	<b>3,320</b>	<b>1,297</b>	<b>28%</b>	<b>693</b>	<b>21</b>	<b>1,318</b>	<b>6,649</b>
Altoona	402	85	17%	94	39	131	751
Mercer	955	672	41%	195	46	214	2,082
Erie	457	164	26%	91	52	147	911
Pittsburgh	1,616	911	36%	326	10	944	3,807
<b>WESTERN REGION</b>	<b>3,430</b>	<b>1,832</b>	<b>35%</b>	<b>706</b>	<b>147</b>	<b>1,436</b>	<b>7,551</b>
<b>TOTAL CASES</b>	<b>9,678</b>	<b>6,376</b>	<b>40%</b>	<b>1,800</b>	<b>202</b>	<b>5,142</b>	<b>23,198</b>

**Table 7**  
**BOARD DECISIONS**  
**January 2001**

Type of Decision	Total
Parole to Street	678
Parole to Detainer	90
Parole Refused	740
Total Considered	1,508
Percent Granted	51%
Recommitments	302
Refer to Prior Action	80
Assigned by Courts	219
Other Decisions	561
<b>Total Decisions</b>	<b>2,670</b>



**Table 8**  
**HEARINGS AND INTERVIEWS**  
**January 2001**

Type	Board Members	Hearing Examiners	Total
<b>HEARINGS</b>			
Preliminary	0	50	50
Preliminary/Detention	0	26	26
Violation	0	185	185
Violation/Detention	0	54	54
Detention	0	35	35
Revocation	0	79	79
Revocation/Violation	0	12	12
Probable Cause Out-of State	0	18	18
Panel	32	0	32
<b>Total Hearings</b>	<b>32</b>	<b>459</b>	<b>491</b>
<b>INTERVIEWS</b>			
Parole Minimum	188	669	857
Review	404	531	935
Reparole Review	152	287	439
<b>Victim Input</b>	<b>0</b>	<b>14</b>	<b>14</b>
<b>Total Interviews</b>	<b>744</b>	<b>1,501</b>	<b>2,245</b>

**Table 9**  
**MONTHLY PAROLING DECISIONS**  
**January 2001**

MONTH/YEAR	PAROLE GRANTED	PAROLE REFUSED	TOTAL CONSIDERED	% GRANTED
Jan-00	767	757	1,524	50%
Feb-00	655	710	1,365	48%
Mar-00	747	660	1,407	53%
Apr-00	699	767	1,466	48%
May-00	694	757	1,451	48%
Jun-00	723	750	1,473	49%
Jul-00	662	683	1,345	49%
Aug-00	833	931	1,764	47%
Sep-00	657	705	1,362	48%
Oct-00	708	717	1,425	50%
Nov-00	718	599	1,317	55%
Dec-00	792	705	1,497	53%
Jan-01	768	740	1,508	51%
<b>Monthly Avg Prior 12 Mo</b>	777	784	1,560	50%

