

# COMMONWEALTH OF PENNSYLVANIA

## Board of Probation and Parole

### MONTHLY STATISTICAL REPORT

December 2000



**Tom Ridge**  
Governor

William F. Ward  
Chairman

Allen Castor  
Member

Benjamin Martinez  
Member

Barbara K. Descher  
Member

Nicholas P. Muller  
Member

Richard A. Kipp  
Member

Sean R. Ryan  
Member

Gary R. Lucht  
Member

Michael M. Webster  
Member

Mary A. Achilles  
Victim Advocate

pbpp  
AN EQUAL OPPORTUNITY EMPLOYER

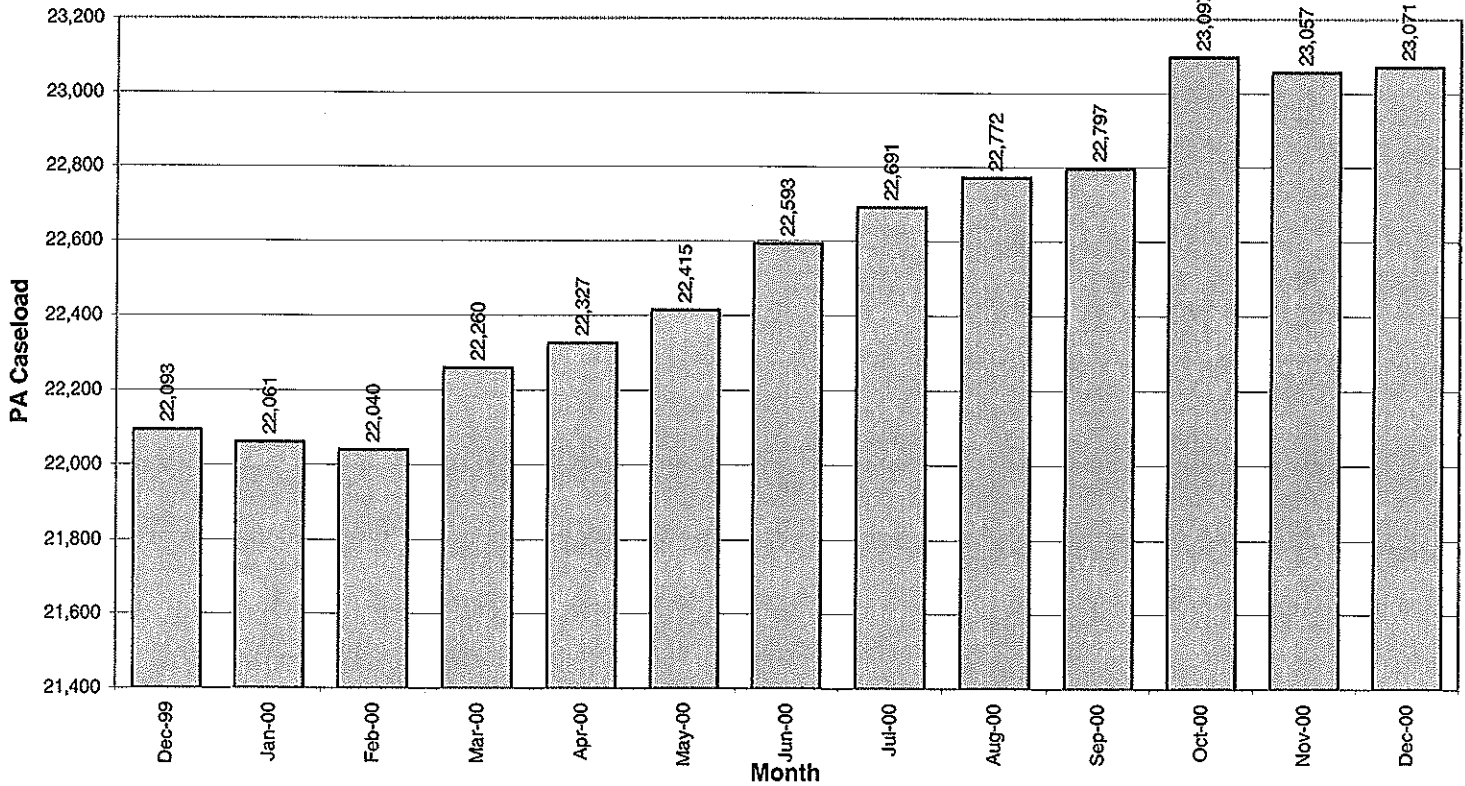


**Table 1  
CASELOAD, WORKLOAD, AND POPULATION CHANGES BY DISTRICT  
December 2000**

Type of Cases	Beginning FY Cases 7/1/00	Current Month Cases	Fiscal YTD Index	Additions	Deletions		Number of Agents	Average Caseload	Average Workload	Total Workload
					Recommits/ Revocations	Other Deletions				
CHESTER	1,865	1,977	106	70	18	25	30	66	121	3,641
PHILADELPHIA	6,867	6,992	102	248	90	82	102	69	124	12,689
<b>EASTERN REGION</b>	<b>8,732</b>	<b>8,969</b>	<b>103</b>	<b>318</b>	<b>108</b>	<b>107</b>	<b>132</b>	<b>68</b>	<b>124</b>	<b>16,330</b>
ALLENTOWN	2,223	2,287	103	81	71	61	35	65	119	4,154
HARRISBURG	2,540	2,625	103	96	27	49	33	80	183	6,039
SCRANTON	1,050	1,110	106	47	14	15	17	65	141	2,398
WILLIAMSPORT	641	648	101	26	14	18	11	59	162	1,787
<b>CENTRAL REGION</b>	<b>6,454</b>	<b>6,670</b>	<b>103</b>	<b>250</b>	<b>126</b>	<b>143</b>	<b>96</b>	<b>69</b>	<b>150</b>	<b>14,377</b>
ALTOONA	766	749	98	24	8	16	14	54	133	1,867
MERCER	1,897	1,972	104	30	34	59	32	62	132	4,226
ERIE	894	916	102	35	21	18	16	57	114	1,816
PITTSBURGH	3,850	3,795	99	106	60	49	57	67	130	7,429
<b>WESTERN REGION</b>	<b>7,407</b>	<b>7,432</b>	<b>100</b>	<b>195</b>	<b>123</b>	<b>142</b>	<b>119</b>	<b>62</b>	<b>129</b>	<b>15,338</b>
<b>TOTAL CASES SUPERVISED</b>	<b>22,593</b>	<b>23,071</b>	<b>102</b>	<b>763</b>	<b>357</b>	<b>392</b>	<b>347</b>	<b>66</b>	<b>133</b>	<b>46,045</b>

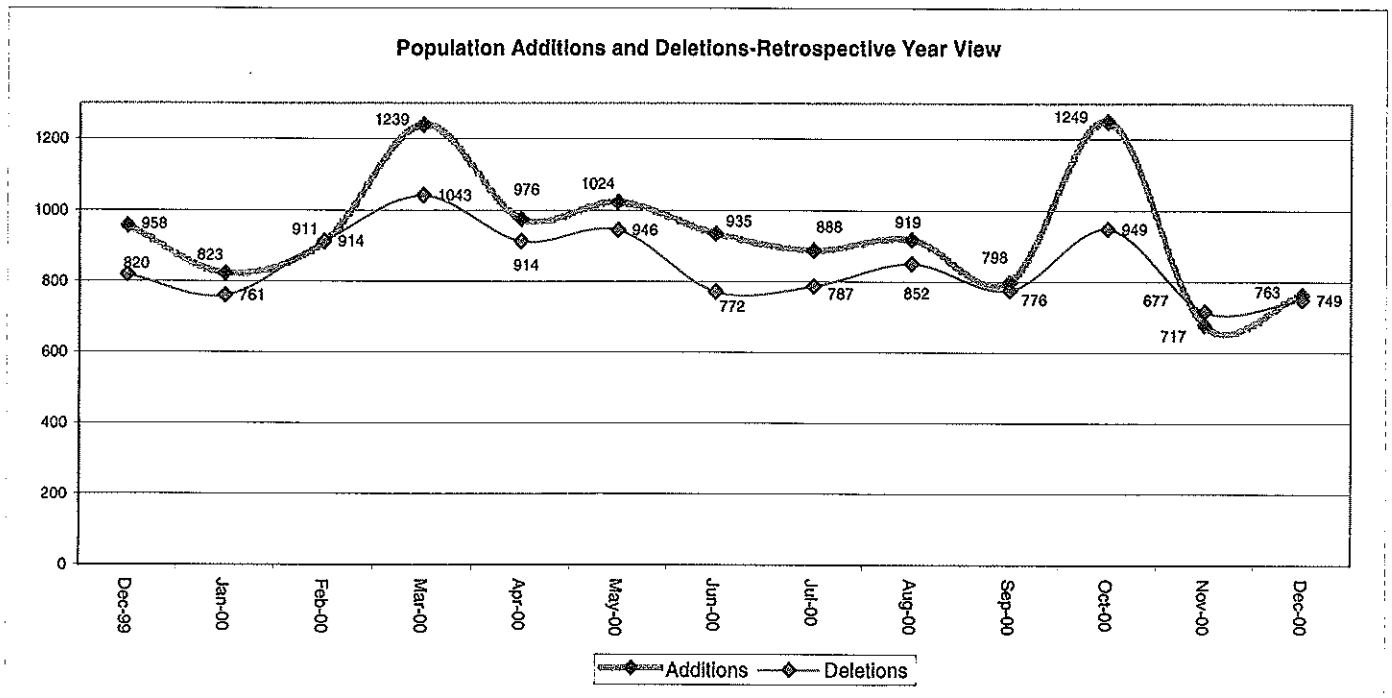
Pa Cases in Other States	2,314	2,347	101	39	9	13
--------------------------	-------	-------	-----	----	---	----

**Caseload Population Change - Retrospective Year View**



**Table 2**  
**CASE ADDITIONS AND DELETIONS FOR SUPERVISED CASELOAD IN PENNSYLVANIA**  
**December 2000**

Case Additions and Deletions	PAROLE	REPAROLE	SPECIAL COUNTY PROBATION	SPECIAL COUNTY PAROLE	OTHER STATES' PAROLE	OTHER STATES' PROBATION	MONTHLY TOTAL	FISCAL YTD TOTAL
<b>ADDITIONS</b>	517	105	50	19	12	60	763	5,292
<b>DELETIONS-RECOMMITMENTS</b>								
<b>Convicted Parole Violator</b>								
State Corrections	47	11	1	0	0	0	59	423
County Corrections	7	4	7	7	0	0	25	114
Other States Cases	0	0	0	0	0	0	0	10
<b>Total Convicted Parole Violator</b>	54	15	8	7	0	0	84	547
<b>Technical Parole Violator</b>								
State Corrections	165	49	6	0	0	0	220	1,319
County Corrections	24	2	12	9	0	0	47	285
Other States Cases	3	0	0	0	0	3	6	33
<b>Total Technical Parole Violator</b>	192	51	18	9	0	3	273	1,637
<b>TOTAL RECOMMITMENTS</b>	246	66	26	16	0	3	357	2,184
Deletion Maximum Discharge	172	37	49	23	10	35	326	2,138
Deletion Death	5	3	0	0	1	0	9	72
Deletion Other	8	1	18	4	11	15	57	442
<b>TOTAL DELETIONS</b>	431	107	93	43	22	53	749	4,836



**Table 3**  
**CASES BY ORIGINATING JURISDICTION**  
**BY REGION AND DISTRICT**  
**December 2000**

District/Region	PA Parole State Sentence				County		Other States		Total Cases
	from DOC	Boot Camp	Cnty Prisons	Subtotal	Spec Prob	Spec Parole	Parole	Probation	
Chester	1,299	73	202	1,574	124	6	39	234	1,977
Philadelphia	5,932	35	382	6,349	261	28	91	263	6,992
<b>Eastern Region</b>	<b>7,231</b>	<b>108</b>	<b>584</b>	<b>7,923</b>	<b>385</b>	<b>34</b>	<b>130</b>	<b>497</b>	<b>8,969</b>
Allentown	1,482	26	401	1,909	115	5	43	215	2,287
Harrisburg	1,877	109	236	2,222	95	7	62	239	2,625
Scranton	439	19	349	807	78	4	33	188	1,110
Williamsport	420	7	90	517	43	8	12	68	648
<b>Central Region</b>	<b>4,218</b>	<b>161</b>	<b>1,076</b>	<b>5,455</b>	<b>331</b>	<b>24</b>	<b>150</b>	<b>710</b>	<b>6,670</b>
Altoona	415	18	73	506	114	69	11	49	749
Mercer	414	10	39	463	755	694	17	43	1,972
Erie	611	23	53	687	113	39	10	67	916
Pittsburgh	2,433	73	98	2,604	830	109	55	197	3,795
<b>Western Region</b>	<b>3,873</b>	<b>124</b>	<b>263</b>	<b>4,260</b>	<b>1,812</b>	<b>911</b>	<b>93</b>	<b>356</b>	<b>7,432</b>
<b>Total Cases</b>	<b>15,322</b>	<b>393</b>	<b>1,923</b>	<b>17,638</b>	<b>2,528</b>	<b>969</b>	<b>373</b>	<b>1,563</b>	<b>23,071</b>
<b>Percent of Total</b>	<b>66%</b>	<b>2%</b>	<b>8%</b>	<b>76%</b>	<b>11%</b>	<b>4%</b>	<b>2%</b>	<b>7%</b>	<b>100%</b>

**Table 4**  
**CASES BY GRADE OF SUPERVISION**  
**BY REGION AND DISTRICT**  
**December 2000**

District/Region	Reporting						Non-Reporting		Total Cases
	Enhanced	Maximum	Medium	Minimum	Not Classified	Subtotal	Absconder	Detainees	
Chester	180	646	397	268	24	1,515	116	346	1,977
Philadelphia	497	2,467	1,518	585	68	5,135	693	1,164	6,992
<b>Eastern Region</b>	<b>677</b>	<b>3,113</b>	<b>1,915</b>	<b>853</b>	<b>92</b>	<b>6,650</b>	<b>809</b>	<b>1,510</b>	<b>8,969</b>
Allentown	62	689	630	368	54	1,803	165	319	2,287
Harrisburg	52	852	700	392	86	2,082	128	415	2,625
Scranton	22	269	385	171	56	903	32	175	1,110
Williamsport	4	154	215	173	29	575	11	62	648
<b>Central Region</b>	<b>140</b>	<b>1,964</b>	<b>1,930</b>	<b>1,104</b>	<b>225</b>	<b>5,363</b>	<b>336</b>	<b>971</b>	<b>6,670</b>
Altoona	24	218	226	106	51	625	22	102	749
Mercer	9	346	469	621	302	1,747	84	141	1,972
Erie	8	265	298	170	27	768	35	113	916
Pittsburgh	218	1,169	1,053	371	40	2,851	234	710	3,795
<b>Western Region</b>	<b>259</b>	<b>1,998</b>	<b>2,046</b>	<b>1,268</b>	<b>420</b>	<b>5,991</b>	<b>375</b>	<b>1,066</b>	<b>7,432</b>
<b>Total Cases</b>	<b>1,076</b>	<b>7,075</b>	<b>5,891</b>	<b>3,225</b>	<b>737</b>	<b>18,004</b>	<b>1,520</b>	<b>3,547</b>	<b>23,071</b>
<b>Percent of Total</b>	<b>5%</b>	<b>31%</b>	<b>26%</b>	<b>14%</b>	<b>3%</b>	<b>78%</b>	<b>7%</b>	<b>15%</b>	<b>100%</b>

**Table 5**  
**CASES BY SEX AND RACE**  
**BY REGION AND DISTRICT**  
**December 2000**

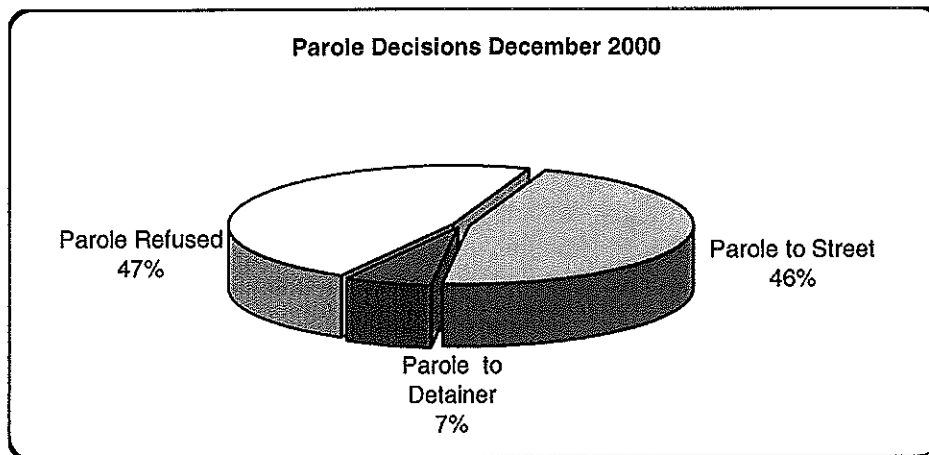
District/Region	Male			Female			Percent Male	Percent Female	Total Cases
	White	Non White	Total	White	Non White	Total			
Chester	743	1,091	1,834	84	59	143	93%	7%	1,977
Philadelphia	905	5,648	6,553	66	373	439	94%	6%	6,992
<b>EASTERN REGION</b>	<b>1,648</b>	<b>6,739</b>	<b>8,387</b>	<b>150</b>	<b>432</b>	<b>582</b>	<b>94%</b>	<b>6%</b>	<b>8,969</b>
Allentown	987	1,054	2,041	133	113	246	89%	11%	2,287
Harrisburg	1,166	1,195	2,361	133	131	264	90%	10%	2,625
Scranton	810	166	976	110	24	134	88%	12%	1,110
Williamsport	459	69	528	95	25	120	81%	19%	648
<b>CENTRAL REGION</b>	<b>3,422</b>	<b>2,484</b>	<b>5,906</b>	<b>471</b>	<b>293</b>	<b>764</b>	<b>89%</b>	<b>11%</b>	<b>6,670</b>
Altoona	581	86	667	77	5	82	89%	11%	749
Mercer	1,333	307	1,640	271	61	332	83%	17%	1,972
Erie	547	254	801	77	38	115	87%	13%	916
Pittsburgh	1,531	1,876	3,407	175	213	388	90%	10%	3,795
<b>WESTERN REGION</b>	<b>3,992</b>	<b>2,523</b>	<b>6,515</b>	<b>600</b>	<b>317</b>	<b>917</b>	<b>88%</b>	<b>12%</b>	<b>7,432</b>
<b>TOTAL CASES</b>	<b>9,062</b>	<b>11,746</b>	<b>20,808</b>	<b>1,221</b>	<b>1,042</b>	<b>2,263</b>	<b>90%</b>	<b>10%</b>	<b>23,071</b>

**Table 6**  
**CASES BY EMPLOYMENT STATUS**  
**BY REGION AND DISTRICT**  
**December 2000**

District/Region	Employed	Unemployed	Unemployment Rate	Unable to Work	Unknown	Non Reporting	Total
Chester	788	622	44%	100	5	462	1,977
Philadelphia	2,187	2,610	54%	312	26	1857	6,992
<b>EASTERN REGION</b>	<b>2,975</b>	<b>3,232</b>	<b>52%</b>	<b>412</b>	<b>31</b>	<b>2,319</b>	<b>8,969</b>
Allentown	1,129	306	21%	296	72	484	2,287
Harrisburg	1,203	667	36%	196	16	543	2,625
Scranton	570	203	26%	94	36	207	1,110
Williamsport	391	63	14%	60	61	73	648
<b>CENTRAL REGION</b>	<b>3,293</b>	<b>1,239</b>	<b>27%</b>	<b>646</b>	<b>185</b>	<b>1,307</b>	<b>6,670</b>
Altoona	398	81	17%	98	48	124	749
Mercer	637	496	44%	106	508	225	1,972
Erie	474	168	26%	99	27	148	916
Pittsburgh	1,647	867	34%	327	10	944	3,795
<b>WESTERN REGION</b>	<b>3,156</b>	<b>1,612</b>	<b>34%</b>	<b>630</b>	<b>593</b>	<b>1,441</b>	<b>7,432</b>
<b>TOTAL CASES</b>	<b>9,424</b>	<b>6,083</b>	<b>39%</b>	<b>1,688</b>	<b>809</b>	<b>5,067</b>	<b>23,071</b>

**Table 7**  
**BOARD DECISIONS**  
**December 2000**

Type of Decision	Total
Parole to Street	694
Parole to Detainer	98
Parole Refused	705
<b>Total Considered</b>	<b>1,497</b>
<b>Percent Granted</b>	<b>53%</b>
Recommitments	295
Refer to Prior Action	89
Assigned by Courts	329
Other Decisions	510
<b>Total Decisions</b>	<b>2,720</b>



**Table 8**  
**HEARINGS AND INTERVIEWS**  
**December 2000**

Type	Board Members	Hearing Examiners	Total
<b>HEARINGS</b>			
Preliminary	0	48	48
Preliminary/Detention	0	20	20
Violation	0	207	207
Violation/Detention	0	47	47
Detention	0	43	43
Revocation	0	58	58
Revocation/Violation	0	10	10
Probable Cause Out-of State	0	12	12
Panel	40	0	40
<b>Total Hearings</b>	<b>40</b>	<b>445</b>	<b>485</b>
<b>INTERVIEWS</b>			
Parole Minimum	134	598	732
Review	318	466	784
Reparole Review	110	247	357
<b>Victim Input</b>	<b>0</b>	<b>23</b>	<b>23</b>
<b>Total Interviews</b>	<b>562</b>	<b>1,334</b>	<b>1,896</b>

**Table 9**  
**MONTHLY PAROLING DECISIONS**  
**December 2000**

MONTH/YEAR	PAROLE GRANTED	PAROLE REFUSED	TOTAL CONSIDERED	% GRANTED
Dec-99	574	684	1,258	46%
Jan-00	767	757	1,524	50%
Feb-00	655	710	1,365	48%
Mar-00	747	660	1,407	53%
Apr-00	699	767	1,466	48%
May-00	694	757	1,451	48%
Jun-00	723	750	1,473	49%
Jul-00	662	683	1,345	49%
Aug-00	833	931	1,764	47%
Sep-00	657	705	1,362	48%
Oct-00	708	717	1,425	50%
Nov-00	718	599	1,317	55%
Dec-00	792	705	1,497	53%
<b>Monthly Avg Prior 12 Mo</b>	<b>776</b>	<b>785</b>	<b>1,562</b>	<b>50%</b>

