

# COMMONWEALTH OF PENNSYLVANIA

## Board of Probation and Parole

### MONTHLY PROGRAM REPORT

November 2014



**Tom Corbett**  
Governor

Lloyd A. White  
Chairman

Edward L. Burke  
Member

Michael L. Green  
Member

Leslie M. Grey  
Member

Jeffrey R. Imboden  
Member

Craig R. McKay  
Member

Michael C. Potteiger  
Member

John R. Tuttle  
Member

Jennifer Storm  
Victim Advocate

**PBPP**  
AN EQUAL OPPORTUNITY EMPLOYER

Published December 16, 2014 by the PBPP Statistical Reporting and Evidence-Based Program Evaluation Office

Copyright © 2014 Commonwealth of Pennsylvania, Board of Probation and Parole. All rights reserved.

**Table 1**  
**WORKLOAD AND POPULATION CHANGES BY REGION / DISTRICT**  
**November 2014**

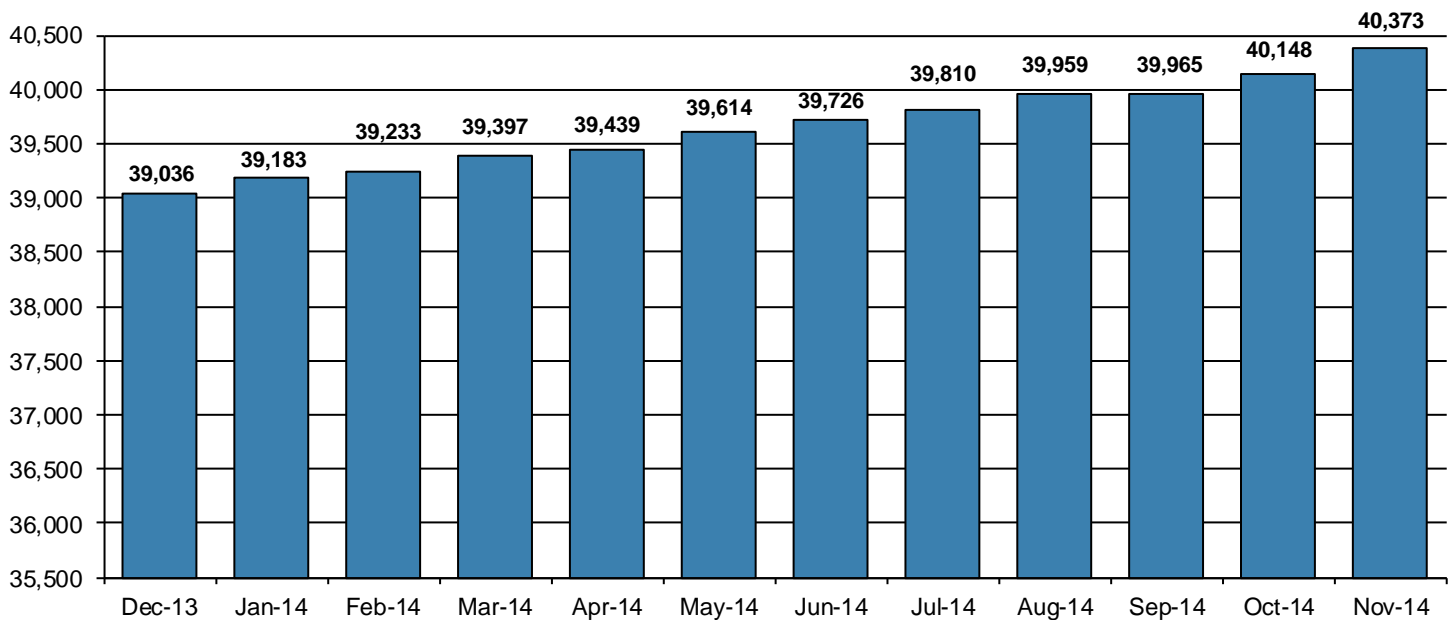
REGION / DISTRICT	Beginning Fiscal Yr <sup>1</sup> July 2014	Current Month Population	Fiscal YTD Index	Additions	Deletions		Number of Agents <sup>2</sup>	Average Workload <sup>3</sup>
					Recommits/ Revocations	Other Deletions		
CHESTER	3,172	3,230	102	70	26	44	42	131
PHILADELPHIA	11,285	11,527	102	330	114	161	137	149
<b>EASTERN REGION</b>	<b>14,457</b>	<b>14,757</b>	<b>102</b>	<b>400</b>	<b>140</b>	<b>205</b>	<b>179</b>	<b>145</b>
ALLENTOWN	4,847	4,825	100	154	71	90	61	155
HARRISBURG	5,536	5,699	103	172	42	89	70	161
SCRANTON	1,910	1,962	103	67	21	31	30	137
WILLIAMSPORT	1,195	1,233	103	29	18	23	16	143
<b>CENTRAL REGION</b>	<b>13,488</b>	<b>13,719</b>	<b>102</b>	<b>422</b>	<b>152</b>	<b>233</b>	<b>177</b>	<b>153</b>
ALTOONA	1,605	1,628	101	56	7	11	22	156
MERCER	3,270	3,262	100	158	21	79	45	154
ERIE	1,766	1,795	102	51	18	18	24	155
PITTSBURGH	5,140	5,212	101	168	72	59	72	148
<b>WESTERN REGION</b>	<b>11,781</b>	<b>11,897</b>	<b>101</b>	<b>433</b>	<b>118</b>	<b>167</b>	<b>163</b>	<b>152</b>
<b>TOTAL Supervised</b>	<b>39,726</b>	<b>40,373</b>	<b>102</b>	<b>1,255</b>	<b>410</b>	<b>605</b>	<b>519</b>	<b>150</b>

<sup>1</sup> effective June 30<sup>2</sup> Filled agent positions

PA Offenders in Other States	<b>3,245</b>	<b>3,339</b>	<b>103</b>	<b>58</b>	<b>13</b>	<b>18</b>
------------------------------	--------------	--------------	------------	-----------	-----------	-----------

<sup>3</sup> Workload is a measure of the expected hours per month an agent's caseload and other duties require. An agent's available hours is 131.75.

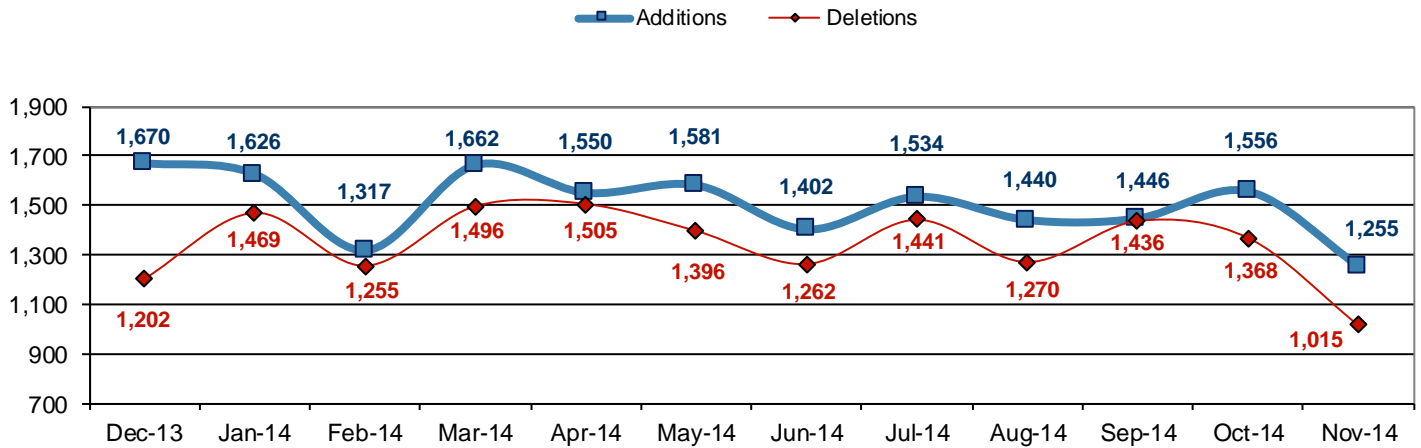
### Population - Retrospective Year View



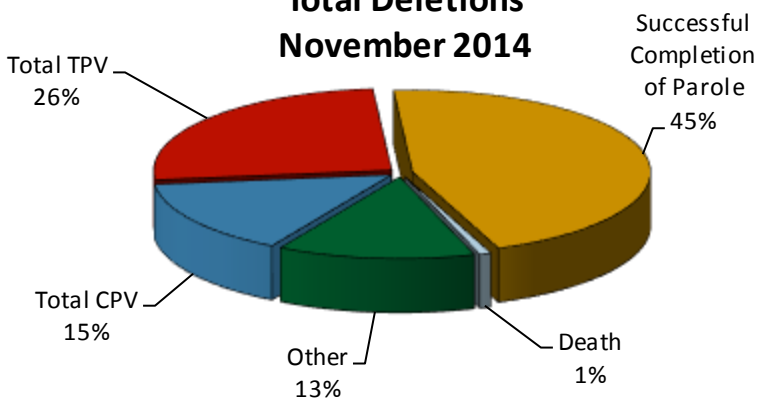
**Table 2  
SUPERVISED POPULATION ADDITIONS AND DELETIONS  
November 2014**

Population Additions and Deletions	Parole	Reparole	Special County Probation	Special County Parole	Other States' Probation	Other States' Parole	Monthly Total	Fiscal YTD Total
<b>ADDITIONS</b>	678	253	127	89	83	25	1,255	7,231
<b>DELETIONS-RECOMMITMENTS</b>								
<i>Convicted Parole Violator</i>								
State Corrections	103	19	3	0	0	0	125	916
County Corrections	3	1	18	2	0	0	24	192
Other States	0	0	0	0	1	0	1	5
<i>Total Convicted Parole Violator</i>	106	20	21	2	1	0	150	1,113
<i>Technical Parole Violator</i>								
State Corrections	150	62	0	0	0	0	212	1,302
County Corrections	3	15	23	7	0	0	48	285
Other States	0	0	0	0	0	0	0	6
<i>Total Technical Parole Violator</i>	153	77	23	7	0	0	260	1,593
<b>TOTAL RECOMMITMENTS</b>	259	97	44	9	1	0	410	2,706
Deletion Successful Completion	227	80	85	35	28	6	461	2,774
Deletion Death	7	1	0	0	0	0	8	138
Deletion Other	15	5	57	4	45	10	136	912
<b>TOTAL DELETIONS</b>	508	183	186	48	74	16	1,015	6,530

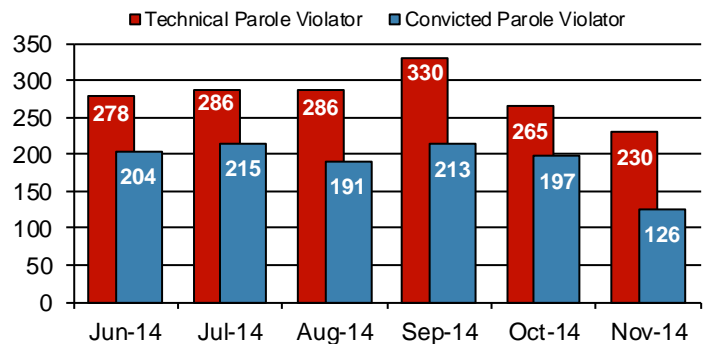
**Population Additions & Deletions-Retrospective Year View**



**Total Deletions  
November 2014**



**State Sentence Parole Revocations\***

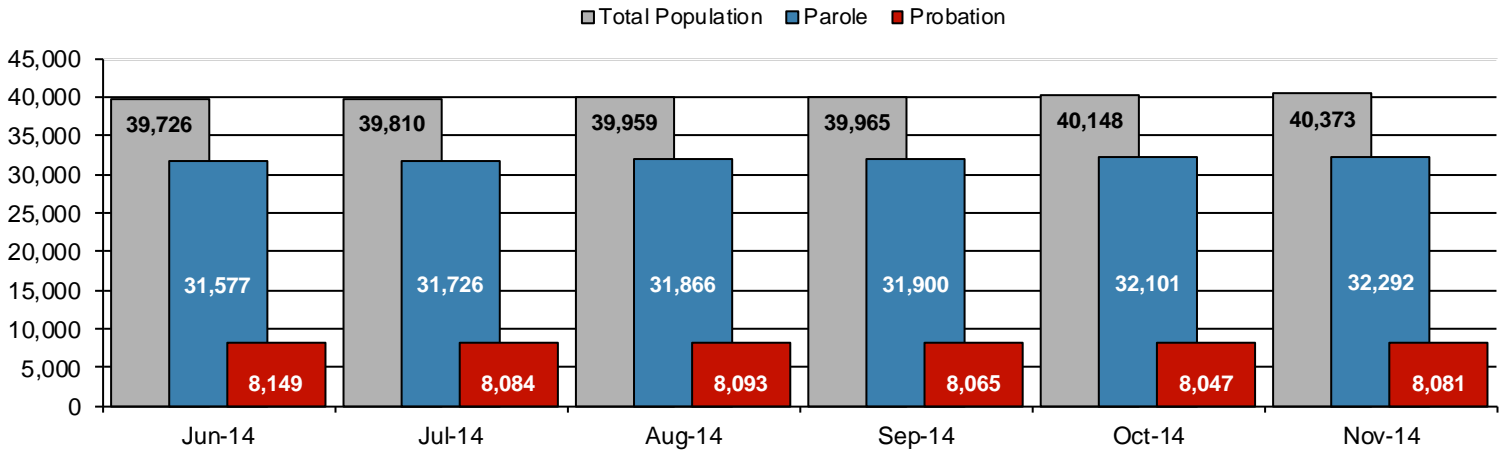


\* These revocations represent field case closure records and are dependent on case processing.

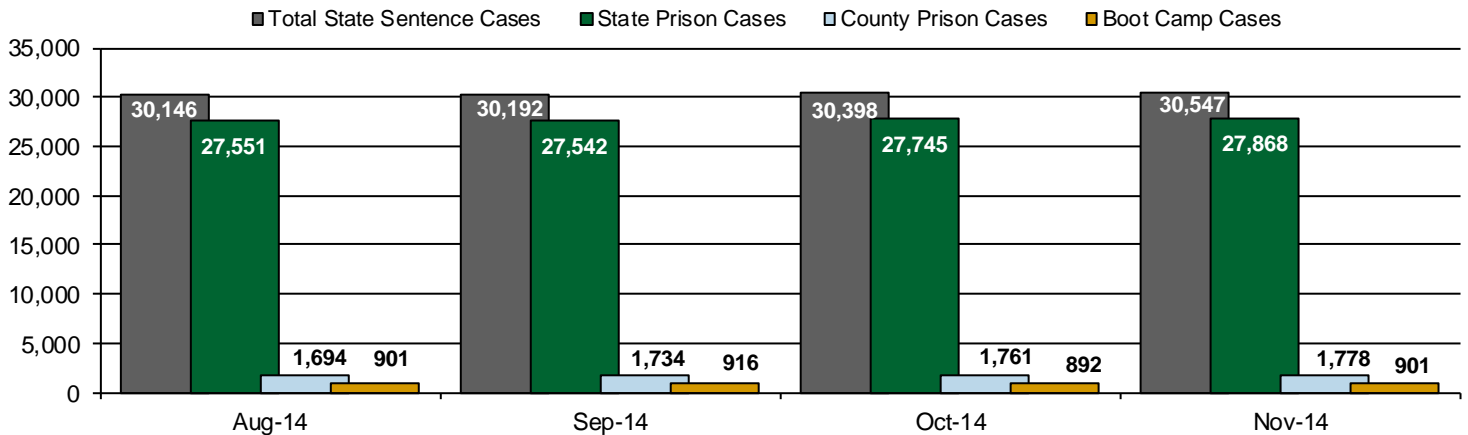
**Table 3**  
**SUPERVISED POPULATION BY ORIGINATING JURISDICTION and REGION / DISTRICT**  
**November 2014**

Region / District	PA Parole State Sentence				County		Other States		Total Population
	State Prisons	Boot Camp	County Prisons	Subtotal	Special Probation	Special Parole	Probation	Parole	
Chester	2,092	43	111	2,246	656	25	255	48	3,230
Philadelphia	8,973	201	253	9,427	1,416	6	533	145	11,527
<b>Eastern Region</b>	<b>11,065</b>	<b>244</b>	<b>364</b>	<b>11,673</b>	<b>2,072</b>	<b>31</b>	<b>788</b>	<b>193</b>	<b>14,757</b>
Allentown	3,387	107	379	3,873	494	2	364	92	4,825
Harrisburg	4,552	214	258	5,024	309	2	286	78	5,699
Scranton	1,374	11	183	1,568	154	1	172	67	1,962
Williamsport	872	14	67	953	141	11	102	26	1,233
<b>Central Region</b>	<b>10,185</b>	<b>346</b>	<b>887</b>	<b>11,418</b>	<b>1,098</b>	<b>16</b>	<b>924</b>	<b>263</b>	<b>13,719</b>
Altoona	1,042	42	95	1,179	263	70	88	28	1,628
Mercer	799	17	61	877	1,309	945	109	22	3,262
Erie	1,243	57	155	1,455	214	52	57	17	1,795
Pittsburgh	3,534	195	216	3,945	907	39	252	69	5,212
<b>Western Region</b>	<b>6,618</b>	<b>311</b>	<b>527</b>	<b>7,456</b>	<b>2,693</b>	<b>1,106</b>	<b>506</b>	<b>136</b>	<b>11,897</b>
<b>Total</b>	<b>27,868</b>	<b>901</b>	<b>1,778</b>	<b>30,547</b>	<b>5,863</b>	<b>1,153</b>	<b>2,218</b>	<b>592</b>	<b>40,373</b>
<b>Percent of Total</b>	<b>69%</b>	<b>2%</b>	<b>5%</b>	<b>76%</b>	<b>15%</b>	<b>3%</b>	<b>5%</b>	<b>1%</b>	<b>100%</b>

**Parole and Probation Supervised Populations**



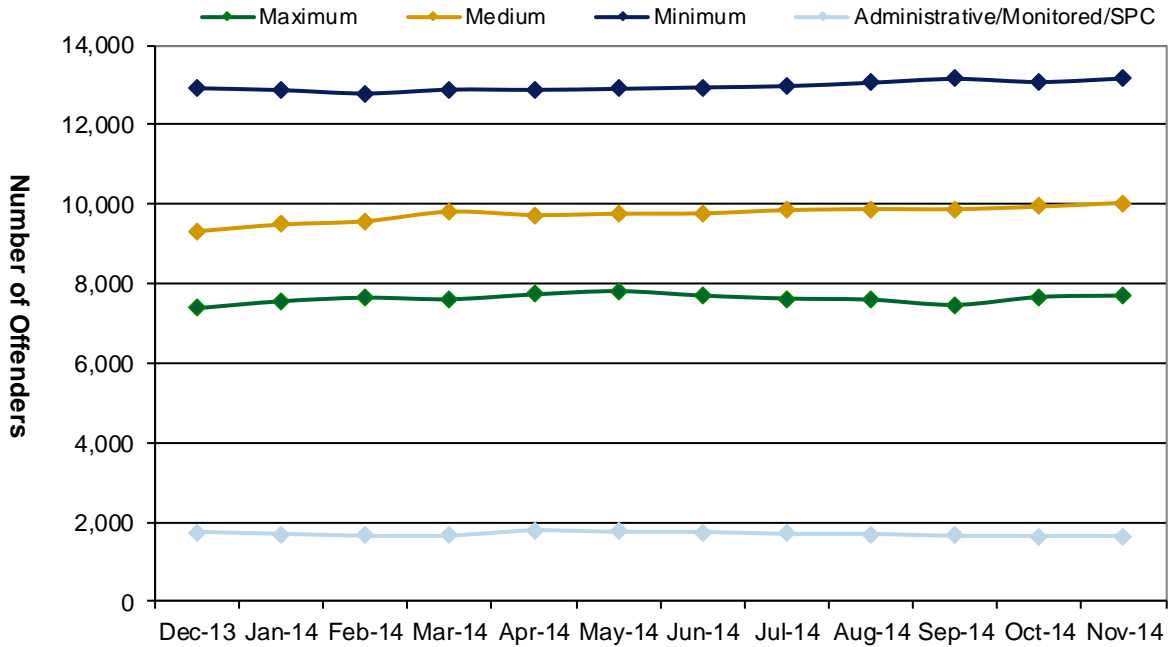
**Supervised State Sentence Cases**



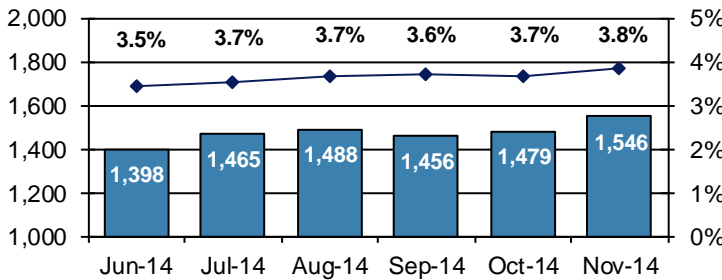
**Table 4**  
**SUPERVISED POPULATION BY GRADE OF SUPERVISION and REGION / DISTRICT**  
**November 2014**

Region / District	Reporting							Non-Reporting		Total Population
	Enhanced	Maximum	Medium	Minimum	ADM/MON /SPC	Not Classified	Subtotal	Absconder	Detainees	
Chester	4	317	779	1,414	234	5	2,753	66	411	3,230
Philadelphia	35	2,010	2,570	3,975	328	56	8,974	504	2,049	11,527
<b>Eastern Region</b>	<b>39</b>	<b>2,327</b>	<b>3,349</b>	<b>5,389</b>	<b>562</b>	<b>61</b>	<b>11,727</b>	<b>570</b>	<b>2,460</b>	<b>14,757</b>
Allentown	19	1,134	1,168	1,466	145	10	3,942	264	619	4,825
Harrisburg	22	1,354	1,318	1,635	251	9	4,589	234	876	5,699
Scranton	11	345	579	594	125	4	1,658	61	243	1,962
Williamsport	5	155	349	355	163	2	1,029	30	174	1,233
<b>Central Region</b>	<b>57</b>	<b>2,988</b>	<b>3,414</b>	<b>4,050</b>	<b>684</b>	<b>25</b>	<b>11,218</b>	<b>589</b>	<b>1,912</b>	<b>13,719</b>
Altoona	1	324	491	489	56	10	1,371	25	232	1,628
Mercer	2	440	942	1,289	177	2	2,852	76	334	3,262
Erie	5	468	484	497	114	5	1,573	62	160	1,795
Pittsburgh	26	1,151	1,353	1,447	47	14	4,038	224	950	5,212
<b>Western Region</b>	<b>34</b>	<b>2,383</b>	<b>3,270</b>	<b>3,722</b>	<b>394</b>	<b>31</b>	<b>9,834</b>	<b>387</b>	<b>1,676</b>	<b>11,897</b>
<b>Total</b>	<b>130</b>	<b>7,698</b>	<b>10,033</b>	<b>13,161</b>	<b>1,640</b>	<b>117</b>	<b>32,779</b>	<b>1,546</b>	<b>6,048</b>	<b>40,373</b>
<b>Percent of Total</b>	<b>&lt;1%</b>	<b>19%</b>	<b>25%</b>	<b>33%</b>	<b>4%</b>	<b>&lt;1%</b>	<b>81%</b>	<b>4%</b>	<b>15%</b>	<b>100%</b>

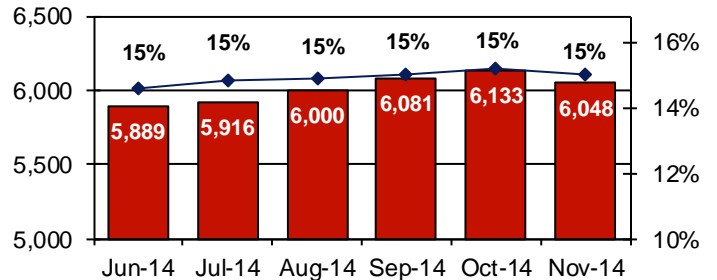
**PBPP Active Cases By Supervision Level**



**Number of Absconders and % of Population**



**Number of Detainees and % of Population**



**Table 5**  
**SUPERVISED POPULATION BY GENDER, RACE and REGION / DISTRICT**  
**November 2014**

Region / District	Male					Female					% Male	Total Population
	White	Black	Hispanic	Other <sup>1</sup>	Total	White	Black	Hispanic	Other <sup>1</sup>	Total		
Chester	1,360	1,400	143	33	2,936	211	73	4	6	294	91%	3,230
Philadelphia	1,490	7,646	1,455	149	10,740	245	443	88	11	787	93%	11,527
<b>EASTERN REGION</b>	<b>2,850</b>	<b>9,046</b>	<b>1,598</b>	<b>182</b>	<b>13,676</b>	<b>456</b>	<b>516</b>	<b>92</b>	<b>17</b>	<b>1,081</b>	<b>93%</b>	<b>14,757</b>
Allentown	2,089	1,071	1,160	37	4,357	317	88	55	8	468	90%	4,825
Harrisburg	2,565	1,832	683	33	5,113	417	110	53	6	586	90%	5,699
Scranton	1,227	366	111	13	1,717	212	19	12	2	245	88%	1,962
Williamsport	850	101	17	4	972	236	19	4	2	261	79%	1,233
<b>CENTRAL REGION</b>	<b>6,731</b>	<b>3,370</b>	<b>1,971</b>	<b>87</b>	<b>12,159</b>	<b>1,182</b>	<b>236</b>	<b>124</b>	<b>18</b>	<b>1,560</b>	<b>89%</b>	<b>13,719</b>
Altoona	1,192	131	8	6	1,337	276	15	0	0	291	82%	1,628
Mercer	2,097	378	13	8	2,496	676	80	5	5	766	77%	3,262
Erie	1,093	398	57	13	1,561	190	38	4	2	234	87%	1,795
Pittsburgh	2,205	2,385	56	19	4,665	388	149	3	7	547	90%	5,212
<b>WESTERN REGION</b>	<b>6,587</b>	<b>3,292</b>	<b>134</b>	<b>46</b>	<b>10,059</b>	<b>1,530</b>	<b>282</b>	<b>12</b>	<b>14</b>	<b>1,838</b>	<b>85%</b>	<b>11,897</b>
<b>TOTAL</b>	<b>16,168</b>	<b>15,708</b>	<b>3,703</b>	<b>315</b>	<b>35,894</b>	<b>3,168</b>	<b>1,034</b>	<b>228</b>	<b>49</b>	<b>4,479</b>	<b>89%</b>	<b>40,373</b>

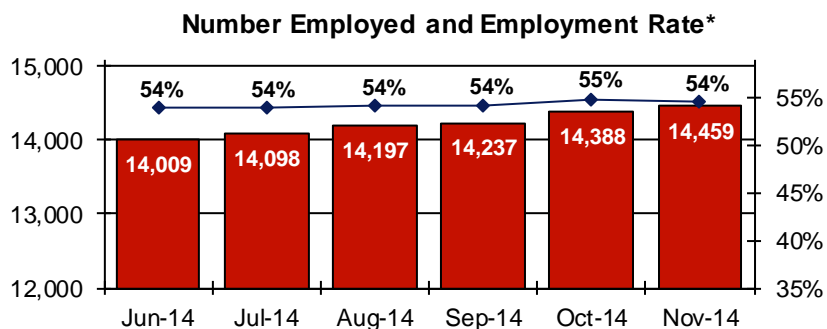
<sup>1</sup> "Other" includes Asian, Pacific Islander, Native American, Native Alaskan, and cases not elsewhere classified.

**Table 6**  
**SUPERVISED POPULATION BY EMPLOYMENT STATUS and REGION / DISTRICT**  
**November 2014**

Region / District	In Labor Force				Not In Labor Force					Total Population
	Employed Part Time	Employed Full Time	Unemployed	Employment Rate	Unable to Work <sup>2</sup>	Student	Unearned Income <sup>3</sup>	Unknown	Non-Reporting	
Chester	157	1,216	966	59%	298	27	89	0	477	3,230
Philadelphia	756	2,414	4,372	42%	894	159	378	1	2,553	11,527
<b>EASTERN REGION</b>	<b>913</b>	<b>3,630</b>	<b>5,338</b>	<b>46%</b>	<b>1,192</b>	<b>186</b>	<b>467</b>	<b>1</b>	<b>3,030</b>	<b>14,757</b>
Allentown	237	1,705	1,047	65%	640	37	276	0	883	4,825
Harrisburg	229	1,811	2,070	50%	274	30	175	0	1,110	5,699
Scranton	54	853	438	67%	124	9	180	0	304	1,962
Williamsport	113	559	112	86%	124	17	104	0	204	1,233
<b>CENTRAL REGION</b>	<b>633</b>	<b>4,928</b>	<b>3,667</b>	<b>60%</b>	<b>1,162</b>	<b>93</b>	<b>735</b>	<b>0</b>	<b>2,501</b>	<b>13,719</b>
Altoona	130	462	504	54%	112	13	150	0	257	1,628
Mercer	293	974	858	60%	349	36	340	2	410	3,262
Erie	116	552	595	53%	151	10	149	0	222	1,795
Pittsburgh	282	1,546	1,143	62%	824	43	199	1	1,174	5,212
<b>WESTERN REGION</b>	<b>821</b>	<b>3,534</b>	<b>3,100</b>	<b>58%</b>	<b>1,436</b>	<b>102</b>	<b>838</b>	<b>3</b>	<b>2,063</b>	<b>11,897</b>
<b>TOTAL</b>	<b>2,367</b>	<b>12,092</b>	<b>12,105</b>	<b>54%</b>	<b>3,790</b>	<b>381</b>	<b>2,040</b>	<b>4</b>	<b>7,594</b>	<b>40,373</b>

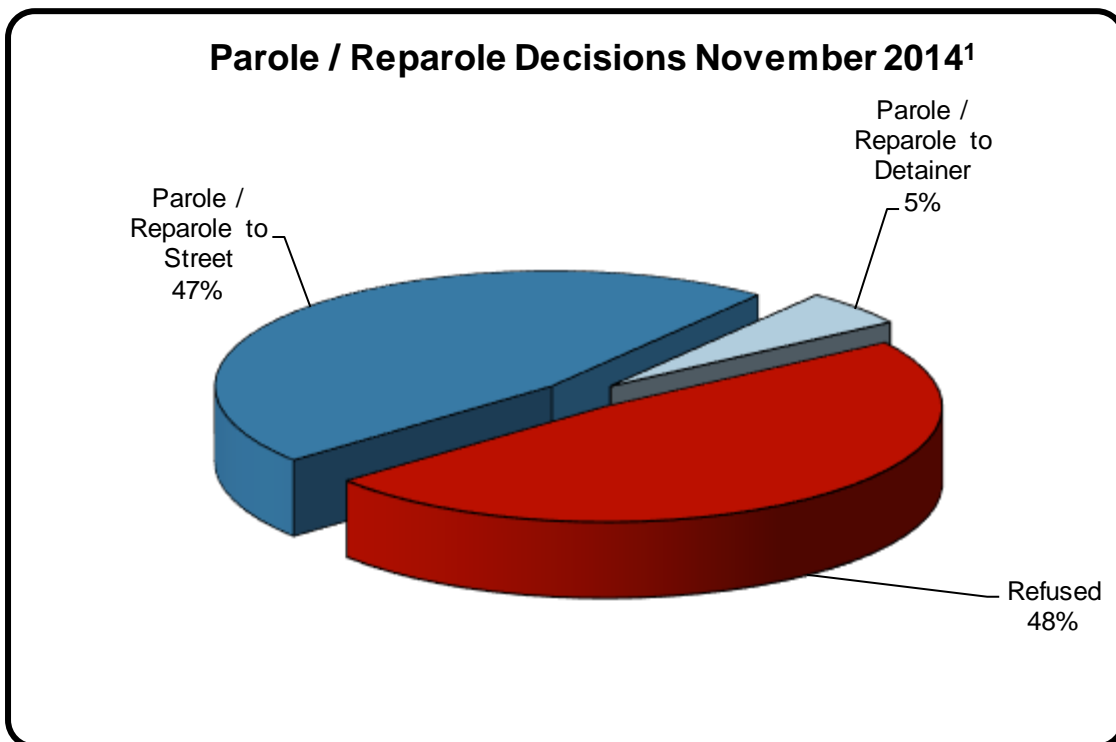
<sup>2</sup> Offender is unable to work due to a physical or mental disability, is a care provider, attends inpatient treatment, etc.

<sup>3</sup> Offender collects income assistance, workman's compensation, monthly pension, Social Security, disability payments, etc.



**Table 7**  
**BOARD DECISIONS**  
**November 2014**

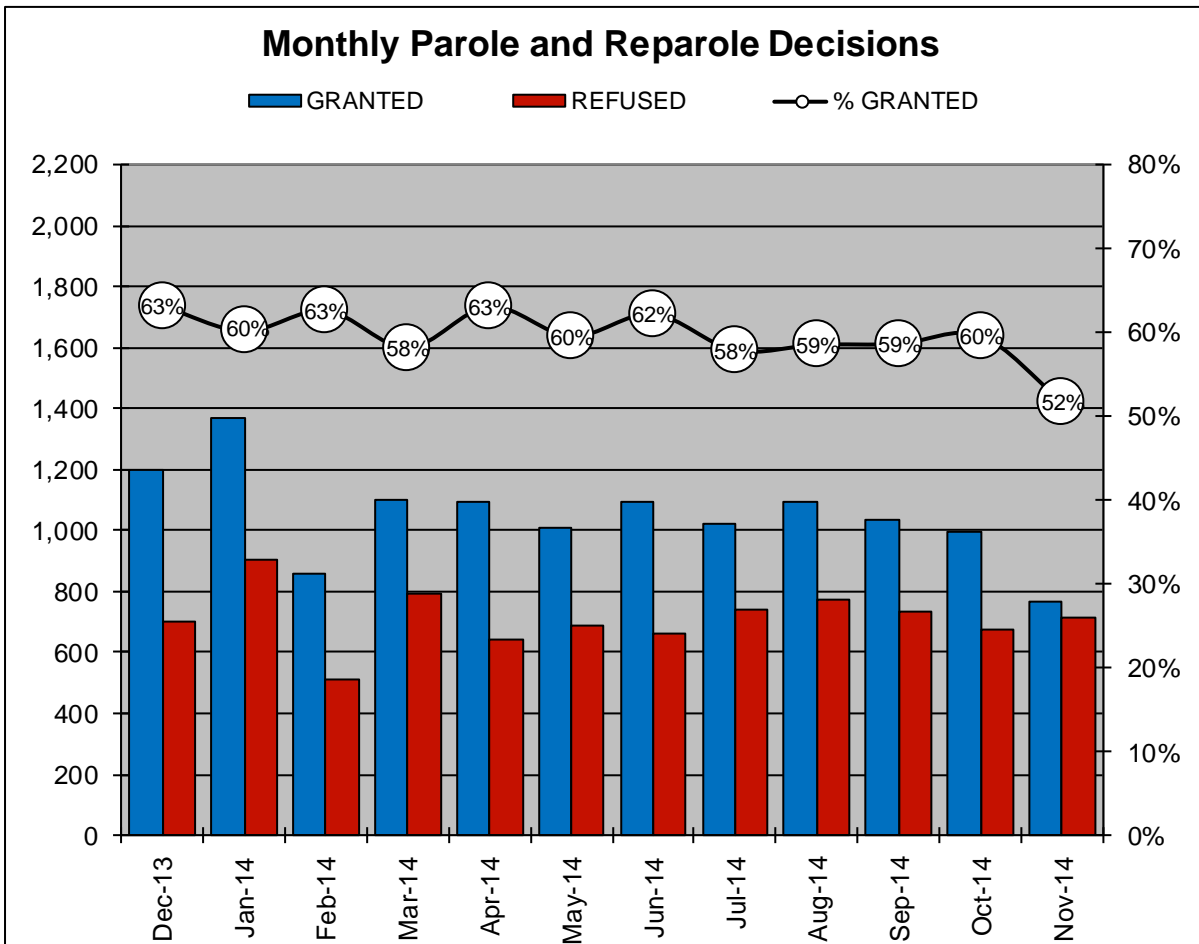
<b>Type of Decision</b>		<b>Total</b>
Parole / Reparole to Street	691	
Parole / Reparole to Detainer	76	
Refused	716	
<b>Total Considered</b>		<b>1,483</b>
Recommitments as TPV	414	
Recommitments as CPV	152	
Recommitments as CPV and TPV	7	
<b>Total Recommitments</b>		<b>573</b>
Refer to Prior Action		82
Other Decisions		850
<b>Total Decisions</b>		<b>2,988</b>



<sup>1</sup> The 52% does not necessarily reflect the overall grant rate, but rather is the calculated percent of grant decisions for the total number of Board Actions produced during this period of time.

**Table 8**  
**MONTHLY PAROLE and REPAROLE DECISIONS**  
**November 2014**

MONTH-YEAR	GRANTED	REFUSED	CONSIDERED	% GRANTED
Dec-13	1,202	701	1,903	63%
Jan-14	1,367	905	2,272	60%
Feb-14	859	513	1,372	63%
Mar-14	1,102	792	1,894	58%
Apr-14	1,094	640	1,734	63%
May-14	1,009	686	1,695	60%
Jun-14	1,094	665	1,759	62%
Jul-14	1,019	742	1,761	58%
Aug-14	1,094	775	1,869	59%
Sep-14	1,036	731	1,767	59%
Oct-14	999	677	1,676	60%
Nov-14	767	716	1,483	52%
<b>Monthly Average Over 12 Months</b>	1,054	712	1,765	60%



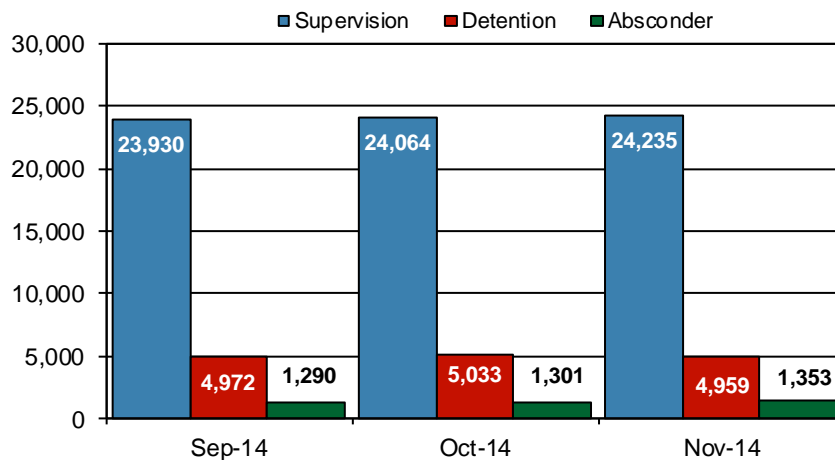


## PBPP Population Breakdown by Place of Incarceration/Jurisdiction - November 2014

Offender Status - November 2014					
Status	State Prison	County Prison	County Sentence	Other States' Cases	Total
Supervision	22,890	1,345	5,851	2,693	32,779
Absconder	1,230	123	193	0	1,546
Detention	4,649	310	972	117	6,048
<b>Total</b>	<b>28,769</b>	<b>1,778</b>	<b>7,016</b>	<b>2,810</b>	<b>40,373</b>

PBPP Monthly Population Profile						
Offender Status	Jun-14	Jul-14	Aug-14	Sep-14	Oct-14	Nov-14
<b>State sentence from state institution</b>	<b>28,175</b>	<b>28,344</b>	<b>28,452</b>	<b>28,458</b>	<b>28,637</b>	<b>28,769</b>
Supervision	22,539	22,611	22,613	22,602	22,732	22,890
Absconder	1,132	1,193	1,221	1,188	1,187	1,230
Detention	4,504	4,540	4,618	4,668	4,718	4,649
<b>State sentence from county prison</b>	<b>1,689</b>	<b>1,692</b>	<b>1,694</b>	<b>1,734</b>	<b>1,761</b>	<b>1,778</b>
Supervision	1,312	1,310	1,305	1,328	1,332	1,345
Absconder	85	93	97	102	114	123
Detention	292	289	292	304	315	310
<b>County sentence Prob &amp; Parole</b>	<b>7,017</b>	<b>6,954</b>	<b>6,980</b>	<b>6,979</b>	<b>6,983</b>	<b>7,016</b>
Supervision	5,877	5,822	5,840	5,824	5,803	5,851
Absconder	180	179	169	165	178	193
Detention	960	953	971	990	982	972
<b>Other states' sentence Prob &amp; Parole</b>	<b>2,845</b>	<b>2,820</b>	<b>2,833</b>	<b>2,794</b>	<b>2,787</b>	<b>2,810</b>
Supervision	2,711	2,686	2,713	2,674	2,669	2,693
Absconder	1	0	1	1	0	0
Detention	133	134	119	119	118	117
<b>PBPP Population end of month</b>	<b>39,726</b>	<b>39,810</b>	<b>39,959</b>	<b>39,965</b>	<b>40,148</b>	<b>40,373</b>

### State Sentence Cases by Offender Status



## PBPP Population Breakdown by Place of Incarceration/Jurisdiction - November 2014

Monthly Count of Grant and Refuse Board Actions							
Type of Decision	County Prison			State Prison			All Grant/Refuse Board Actions
	Grant	Refuse	Total	Grant	Refuse	Total	
December 2013	13	7	20	1,189	694	1,883	<b>1,903</b>
January 2014	5	5	10	1,362	900	2,262	<b>2,272</b>
February 2014	11	1	12	848	512	1,360	<b>1,372</b>
March 2014	6	4	10	1,096	788	1,884	<b>1,894</b>
April 2014	9	1	10	1,085	639	1,724	<b>1,734</b>
May 2014	4	1	5	1,005	685	1,690	<b>1,695</b>
June 2014	5	4	9	1,089	661	1,750	<b>1,759</b>
July 2014	3	0	3	1,016	742	1,758	<b>1,761</b>
August 2014	3	5	8	1,091	770	1,861	<b>1,869</b>
September 2014	3	1	4	1,033	730	1,763	<b>1,767</b>
October 2014	2	4	6	997	673	1,670	<b>1,676</b>
November 2014	3	1	4	764	715	1,479	<b>1,483</b>
<b>2014 Total</b>	<b>54</b>	<b>27</b>	<b>81</b>	<b>11,386</b>	<b>7,815</b>	<b>19,201</b>	<b>19,282</b>

Additions and Deletions						
	Jun-14	Jul-14	Aug-14	Sep-14	Oct-14	Nov-14
<b>Total Additions</b>	<b>1,402</b>	<b>1,534</b>	<b>1,440</b>	<b>1,446</b>	<b>1,556</b>	<b>1,255</b>
State sentence - State Prison	1,013	1,126	1,032	1,033	1,044	861
State sentence - County Prison	67	83	78	103	116	70
County sentence Prob & Parole	180	184	177	178	258	216
Other states' sentence	142	141	153	132	138	108
<b>Total Deletions</b>	<b>1,262</b>	<b>1,441</b>	<b>1,270</b>	<b>1,436</b>	<b>1,368</b>	<b>1,015</b>
<b>State sentence - State Prison</b>	<b>806</b>	<b>859</b>	<b>798</b>	<b>905</b>	<b>789</b>	<b>641</b>
<i>Technical Violator</i>	253	267	263	308	247	212
<i>Convicted Violator</i>	198	204	186	203	185	122
<i>Successful Completion</i>	319	351	306	360	327	282
<i>Other Case Closure</i>	36	37	43	34	30	25
<b>State sentence - County Prison</b>	<b>61</b>	<b>70</b>	<b>60</b>	<b>65</b>	<b>68</b>	<b>50</b>
<i>Technical Violator</i>	25	19	23	22	18	18
<i>Convicted Violator</i>	6	11	5	10	12	4
<i>Successful Completion</i>	26	34	28	33	34	25
<i>Other Case Closure</i>	4	6	4	0	4	3
<b>County sentence Prob &amp; Parole</b>	<b>250</b>	<b>345</b>	<b>274</b>	<b>294</b>	<b>365</b>	<b>234</b>
<i>Technical Violator</i>	32	46	39	27	48	30
<i>Convicted Violator</i>	19	39	26	31	47	23
<i>Successful Completion</i>	120	166	134	149	183	120
<i>Other Case Closure</i>	79	94	75	87	87	61
<b>Other states' sentence</b>	<b>145</b>	<b>167</b>	<b>138</b>	<b>172</b>	<b>146</b>	<b>90</b>
<i>Technical Violator</i>	1	1	3	1	1	0
<i>Convicted Violator</i>	4	1	3	0	0	1
<i>Successful Completion</i>	55	56	45	62	45	34
<i>Other Case Closure</i>	85	109	87	109	100	55
<b>PBPP Population end of month</b>	<b>39,726</b>	<b>39,810</b>	<b>39,959</b>	<b>39,965</b>	<b>40,148</b>	<b>40,373</b>