

# COMMONWEALTH OF PENNSYLVANIA

## Board of Probation and Parole

### MONTHLY PROGRAM REPORT

March 2014



**Tom Corbett**  
Governor

Michael C. Potteiger  
Chairman

Edward L. Burke  
Member

Randy P. Feathers  
Member

Michael L. Green  
Member

Leslie M. Grey  
Member

Jeffrey R. Imboden  
Member

Craig R. McKay  
Member

John R. Tuttle  
Member

Lloyd A. White  
Member

Jennifer Storm  
Victim Advocate

**PBPP**  
AN EQUAL OPPORTUNITY EMPLOYER

Published April 21, 2014 by the PBPP Statistical Reporting and Evidence-Based Program Evaluation Office

Copyright © 2014 Commonwealth of Pennsylvania, Board of Probation and Parole. All rights reserved.

**Table 1**  
**WORKLOAD AND POPULATION CHANGES BY REGION / DISTRICT**  
**March 2014**

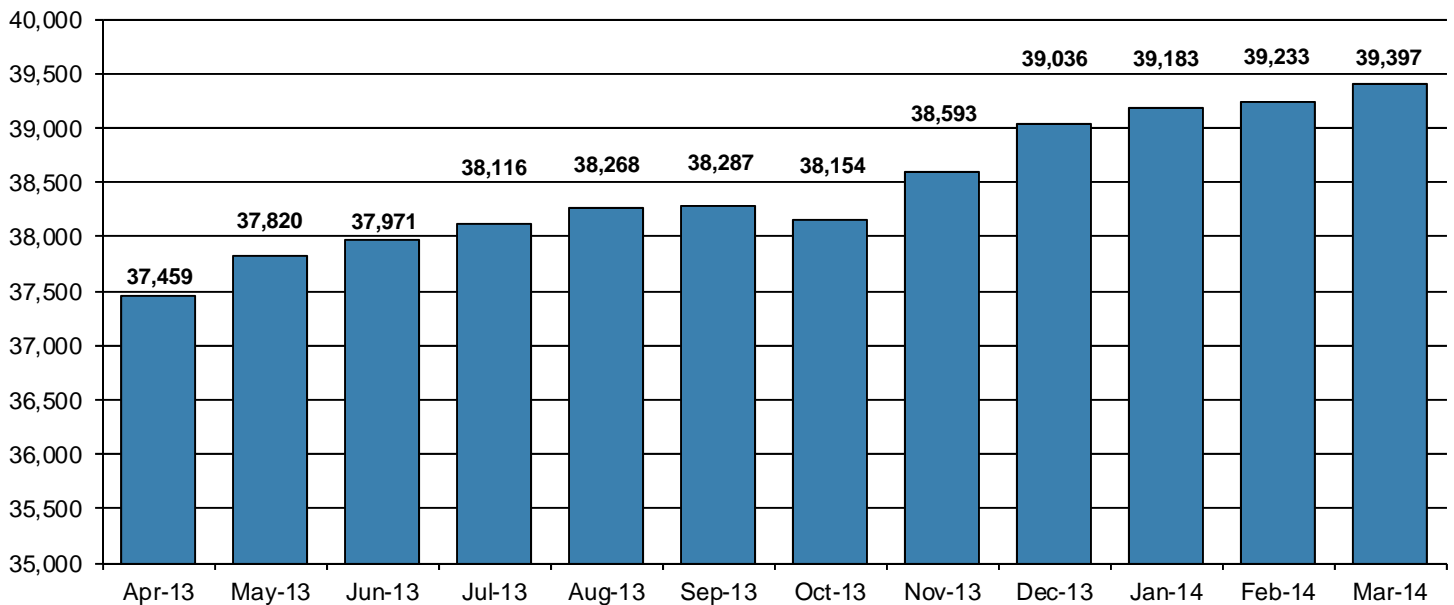
REGION / DISTRICT	Beginning Fiscal Yr <sup>1</sup> July 2013	Current Month Population	Fiscal YTD Index	Additions	Deletions		Number of Agents <sup>2</sup>	Average Workload <sup>3</sup>
					Recommits/ Revocations	Other Deletions		
CHESTER	3,154	3,145	100	103	42	84	40	138
PHILADELPHIA	10,676	11,085	104	381	153	212	136	146
<b>EASTERN REGION</b>	<b>13,830</b>	<b>14,230</b>	<b>103</b>	<b>484</b>	<b>195</b>	<b>296</b>	<b>176</b>	<b>144</b>
ALLENTOWN	4,466	4,843	108	243	75	96	60	162
HARRISBURG	5,328	5,525	104	255	141	110	72	155
SCRANTON	1,961	1,878	96	98	33	38	30	131
WILLIAMSPORT	1,104	1,157	105	37	19	21	16	143
<b>CENTRAL REGION</b>	<b>12,859</b>	<b>13,403</b>	<b>104</b>	<b>633</b>	<b>268</b>	<b>265</b>	<b>178</b>	<b>152</b>
ALTOONA	1,502	1,582	105	67	35	33	23	154
MERCER	3,151	3,323	105	148	54	91	44	160
ERIE	1,762	1,789	102	105	25	40	25	152
PITTSBURGH	4,867	5,070	104	225	95	99	72	152
<b>WESTERN REGION</b>	<b>11,282</b>	<b>11,764</b>	<b>104</b>	<b>545</b>	<b>209</b>	<b>263</b>	<b>164</b>	<b>155</b>
<b>TOTAL Supervised</b>	<b>37,971</b>	<b>39,397</b>	<b>104</b>	<b>1,662</b>	<b>672</b>	<b>824</b>	<b>518</b>	<b>150</b>

<sup>1</sup> effective June 30<sup>2</sup> Filled agent positions

PA Offenders in Other States	<b>3,189</b>	<b>3,196</b>	<b>100</b>	<b>70</b>	<b>14</b>	<b>59</b>
------------------------------	--------------	--------------	------------	-----------	-----------	-----------

<sup>3</sup> Workload is a measure of the expected hours per month an agent's caseload and other duties require. An agent's available hours is 131.75.

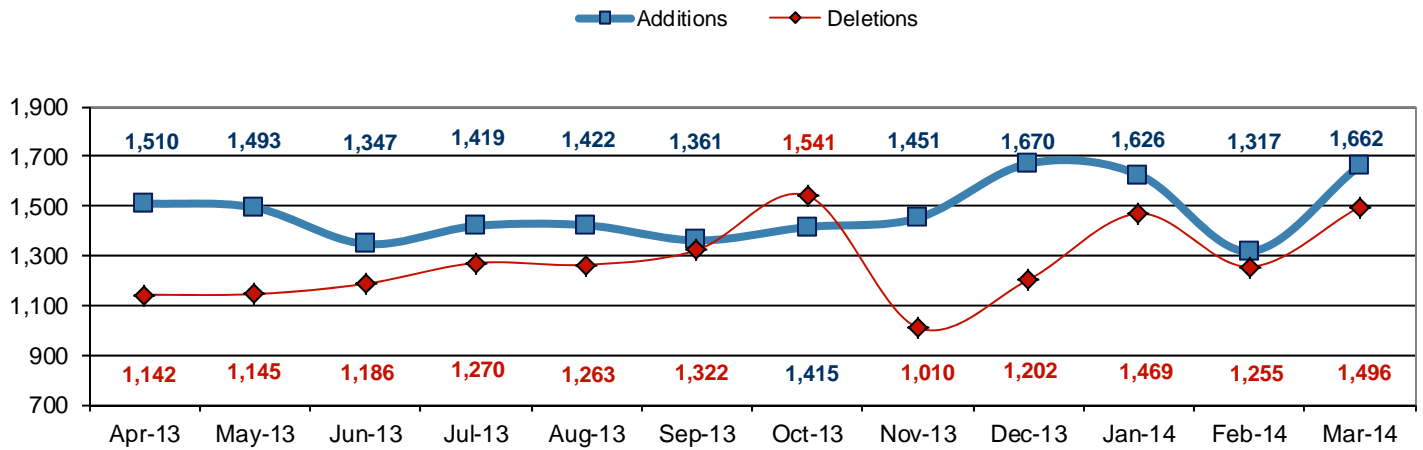
### Population - Retrospective Year View



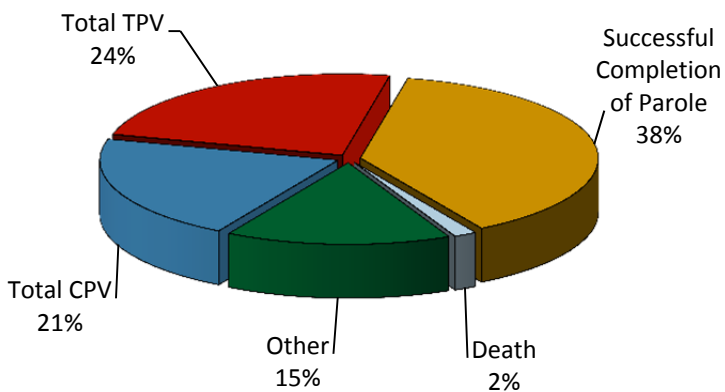
**Table 2  
SUPERVISED POPULATION ADDITIONS AND DELETIONS  
March 2014**

Population Additions and Deletions	Parole	Reparole	Special County Probation	Special County Parole	Other States' Probation	Other States' Parole	Monthly Total	Fiscal YTD Total
<b>ADDITIONS</b>	951	353	142	73	129	14	1,662	13,343
<b>DELETIONS-RECOMMITMENTS</b>								
<i>Convicted Parole Violator</i>								
State Corrections	219	46	0	0	0	0	265	1,683
County Corrections	7	1	26	8	0	0	42	328
Other States	0	0	0	0	5	0	5	15
<i>Total Convicted Parole Violator</i>	226	47	26	8	5	0	312	2,026
<i>Technical Parole Violator</i>								
State Corrections	210	89	2	0	0	0	301	2,382
County Corrections	6	14	27	12	0	0	59	456
Other States	0	0	0	0	0	0	0	12
<i>Total Technical Parole Violator</i>	216	103	29	12	0	0	360	2,850
<b>TOTAL RECOMMITMENTS</b>	442	150	55	20	5	0	672	4,876
Deletion Successful Completion	300	85	91	38	48	12	574	5,050
Deletion Death	11	5	2	0	3	0	21	221
Deletion Other	20	5	76	11	104	13	229	1,681
<b>TOTAL DELETIONS</b>	773	245	224	69	160	25	1,496	11,828

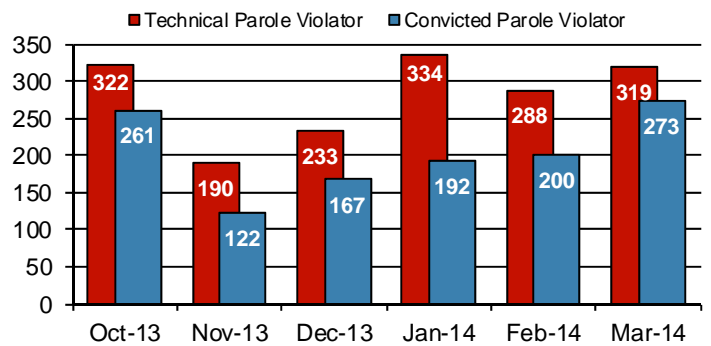
**Population Additions & Deletions-Retrospective Year View**



**Total Deletions March 2014**



**State Sentence Parole Revocations\***



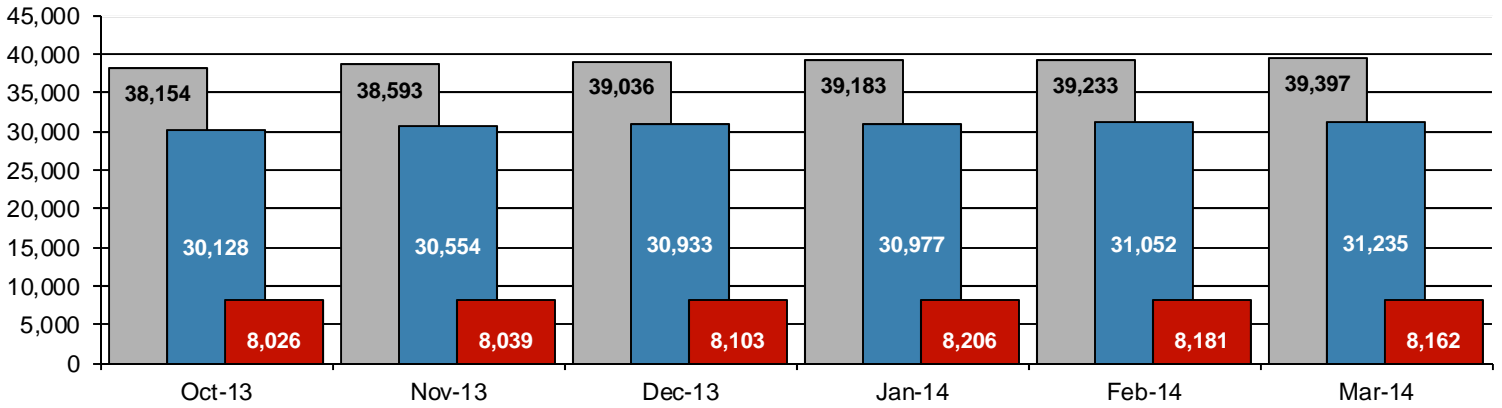
\* These revocations represent field case closure records and are dependent on case processing.

**Table 3  
SUPERVISED POPULATION BY ORIGINATING JURISDICTION and REGION / DISTRICT  
March 2014**

Region / District	PA Parole State Sentence				County		Other States		Total Population
	State Prisons	Boot Camp	County Prisons	Subtotal	Special Probation	Special Parole	Probation	Parole	
Chester	1,978	42	112	2,132	677	24	263	49	3,145
Philadelphia	8,603	200	233	9,036	1,332	7	559	151	11,085
<b>Eastern Region</b>	<b>10,581</b>	<b>242</b>	<b>345</b>	<b>11,168</b>	<b>2,009</b>	<b>31</b>	<b>822</b>	<b>200</b>	<b>14,230</b>
Allentown	3,430	116	358	3,904	468	3	391	77	4,843
Harrisburg	4,414	198	232	4,844	320	3	287	71	5,525
Scranton	1,311	12	156	1,479	162	1	178	58	1,878
Williamsport	792	10	65	867	148	9	109	24	1,157
<b>Central Region</b>	<b>9,947</b>	<b>336</b>	<b>811</b>	<b>11,094</b>	<b>1,098</b>	<b>16</b>	<b>965</b>	<b>230</b>	<b>13,403</b>
Altoona	1,014	33	90	1,137	276	59	88	22	1,582
Mercer	778	17	48	843	1,381	970	108	21	3,323
Erie	1,210	62	180	1,452	207	45	66	19	1,789
Pittsburgh	3,384	227	194	3,805	896	46	246	77	5,070
<b>Western Region</b>	<b>6,386</b>	<b>339</b>	<b>512</b>	<b>7,237</b>	<b>2,760</b>	<b>1,120</b>	<b>508</b>	<b>139</b>	<b>11,764</b>
<b>Total</b>	<b>26,914</b>	<b>917</b>	<b>1,668</b>	<b>29,499</b>	<b>5,867</b>	<b>1,167</b>	<b>2,295</b>	<b>569</b>	<b>39,397</b>
<b>Percent of Total</b>	<b>68%</b>	<b>2%</b>	<b>4%</b>	<b>74%</b>	<b>15%</b>	<b>3%</b>	<b>6%</b>	<b>2%</b>	<b>100%</b>

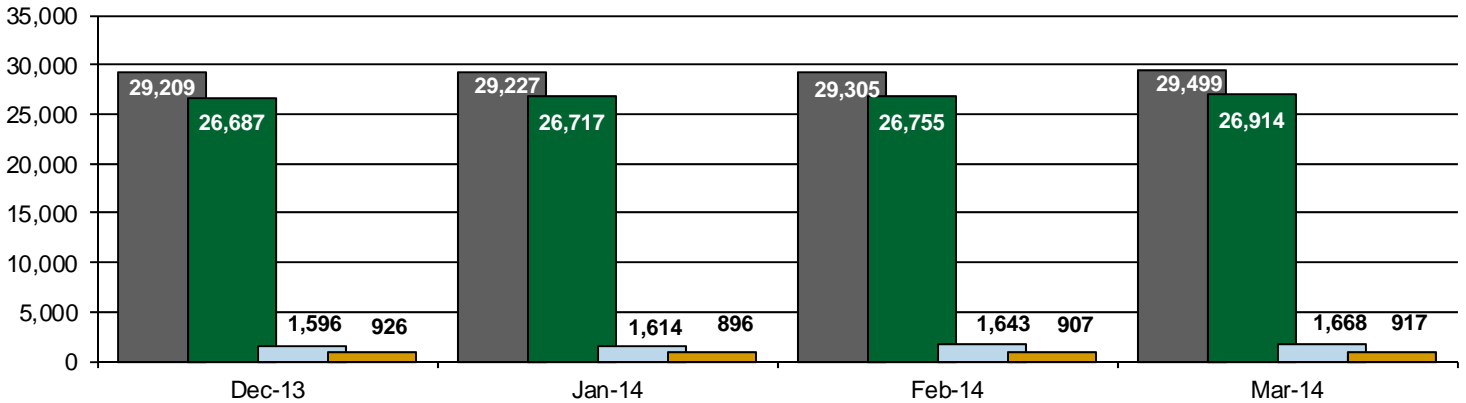
**Parole and Probation Supervised Populations**

■ Total Population   
 ■ Parole   
 ■ Probation



**Supervised State Sentence Cases**

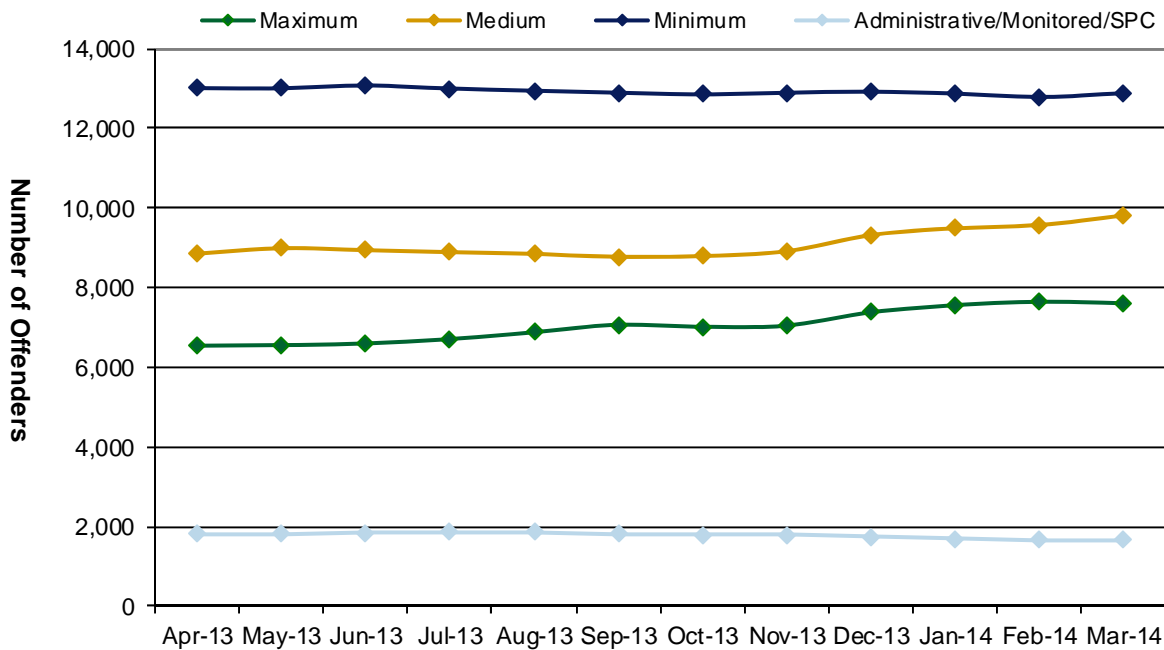
■ Total State Sentence Cases   
 ■ State Prison Cases   
 ■ County Prison Cases   
 ■ Boot Camp Cases



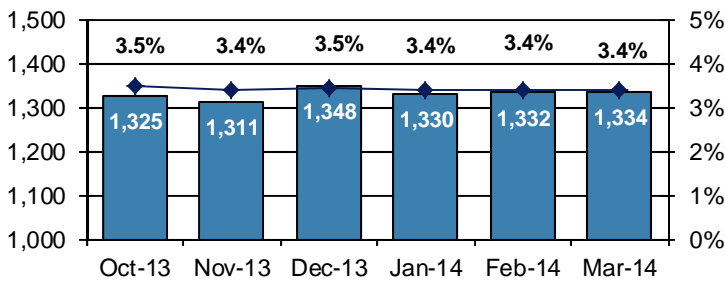
**Table 4**  
**SUPERVISED POPULATION BY GRADE OF SUPERVISION and REGION / DISTRICT**  
**March 2014**

Region / District	Reporting							Non-Reporting		Total Population
	Enhanced	Maximum	Medium	Minimum	ADM/MON /SPC	Not Classified	Subtotal	Absconder	Detainees	
Chester	7	266	742	1,433	217	4	2,669	68	408	3,145
Philadelphia	6	1,935	2,351	3,934	333	98	8,657	446	1,982	11,085
<b>Eastern Region</b>	<b>13</b>	<b>2,201</b>	<b>3,093</b>	<b>5,367</b>	<b>550</b>	<b>102</b>	<b>11,326</b>	<b>514</b>	<b>2,390</b>	<b>14,230</b>
Allentown	28	1,169	1,228	1,421	167	18	4,031	199	613	4,843
Harrisburg	31	1,238	1,323	1,555	267	10	4,424	228	873	5,525
Scranton	12	271	494	651	129	6	1,563	62	253	1,878
Williamsport	2	144	324	385	149	0	1,004	19	134	1,157
<b>Central Region</b>	<b>73</b>	<b>2,822</b>	<b>3,369</b>	<b>4,012</b>	<b>712</b>	<b>34</b>	<b>11,022</b>	<b>508</b>	<b>1,873</b>	<b>13,403</b>
Altoona	6	342	454	488	52	1	1,343	18	221	1,582
Mercer	3	391	973	1,333	208	0	2,908	63	352	3,323
Erie	4	482	460	511	110	2	1,569	33	187	1,789
Pittsburgh	29	1,367	1,460	1,169	43	8	4,076	198	796	5,070
<b>Western Region</b>	<b>42</b>	<b>2,582</b>	<b>3,347</b>	<b>3,501</b>	<b>413</b>	<b>11</b>	<b>9,896</b>	<b>312</b>	<b>1,556</b>	<b>11,764</b>
<b>Total</b>	<b>128</b>	<b>7,605</b>	<b>9,809</b>	<b>12,880</b>	<b>1,675</b>	<b>147</b>	<b>32,244</b>	<b>1,334</b>	<b>5,819</b>	<b>39,397</b>
<b>Percent of Total</b>	<b>&lt;1%</b>	<b>19%</b>	<b>25%</b>	<b>33%</b>	<b>4%</b>	<b>1%</b>	<b>82%</b>	<b>3%</b>	<b>15%</b>	<b>100%</b>

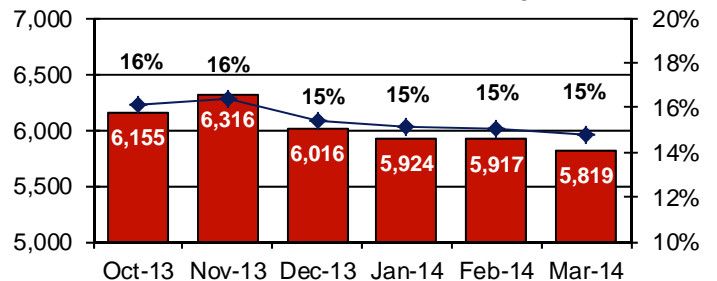
**PBPP Active Cases By Supervision Level**



**Number of Absconders and % of Population**



**Number of Detainees and % of Population**



**Table 5**  
**SUPERVISED POPULATION BY GENDER, RACE and REGION / DISTRICT**  
**March 2014**

Region / District	Male					Female					% Male	Total Population
	White	Black	Hispanic	Other <sup>1</sup>	Total	White	Black	Hispanic	Other <sup>1</sup>	Total		
Chester	1,320	1,379	128	37	2,864	193	76	6	6	281	91%	3,145
Philadelphia	1,429	7,395	1,366	146	10,336	229	445	66	9	749	93%	11,085
<b>EASTERN REGION</b>	<b>2,749</b>	<b>8,774</b>	<b>1,494</b>	<b>183</b>	<b>13,200</b>	<b>422</b>	<b>521</b>	<b>72</b>	<b>15</b>	<b>1,030</b>	<b>93%</b>	<b>14,230</b>
Allentown	2,137	1,064	1,123	35	4,359	337	86	54	7	484	90%	4,843
Harrisburg	2,498	1,774	625	41	4,938	417	111	54	5	587	89%	5,525
Scranton	1,178	349	107	8	1,642	199	24	10	3	236	87%	1,878
Williamsport	797	97	21	3	918	214	17	7	1	239	79%	1,157
<b>CENTRAL REGION</b>	<b>6,610</b>	<b>3,284</b>	<b>1,876</b>	<b>87</b>	<b>11,857</b>	<b>1,167</b>	<b>238</b>	<b>125</b>	<b>16</b>	<b>1,546</b>	<b>88%</b>	<b>13,403</b>
Altoona	1,152	140	7	7	1,306	262	14	0	0	276	83%	1,582
Mercer	2,127	385	14	10	2,536	694	83	4	6	787	76%	3,323
Erie	1,075	395	59	12	1,541	203	39	4	2	248	86%	1,789
Pittsburgh	2,156	2,290	48	22	4,516	389	154	4	7	554	89%	5,070
<b>WESTERN REGION</b>	<b>6,510</b>	<b>3,210</b>	<b>128</b>	<b>51</b>	<b>9,899</b>	<b>1,548</b>	<b>290</b>	<b>12</b>	<b>15</b>	<b>1,865</b>	<b>84%</b>	<b>11,764</b>
<b>TOTAL</b>	<b>15,869</b>	<b>15,268</b>	<b>3,498</b>	<b>321</b>	<b>34,956</b>	<b>3,137</b>	<b>1,049</b>	<b>209</b>	<b>46</b>	<b>4,441</b>	<b>89%</b>	<b>39,397</b>

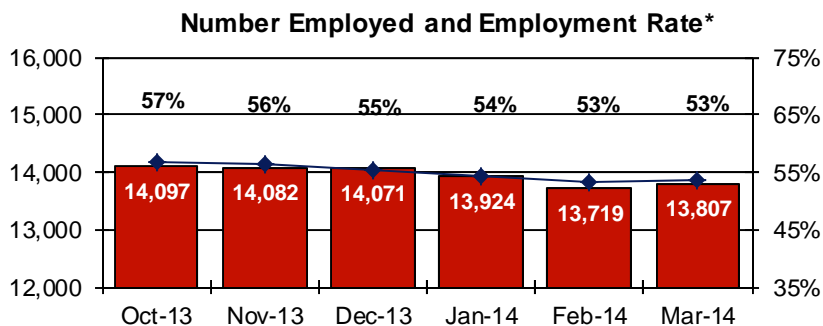
<sup>1</sup> "Other" includes Asian, Pacific Islander, Native American, Native Alaskan, and cases not elsewhere classified.

**Table 6**  
**SUPERVISED POPULATION BY EMPLOYMENT STATUS and REGION / DISTRICT**  
**March 2014**

Region / District	In Labor Force				Not In Labor Force					Total Population
	Employed Part Time	Employed Full Time	Unemployed	Employment Rate	Unable to Work <sup>2</sup>	Student	Unearned Income <sup>3</sup>	Unknown	Non-Reporting	
Chester	179	1,171	904	60%	302	26	87	0	476	3,145
Philadelphia	695	2,297	4,272	41%	850	150	390	3	2,428	11,085
<b>EASTERN REGION</b>	<b>874</b>	<b>3,468</b>	<b>5,176</b>	<b>46%</b>	<b>1,152</b>	<b>176</b>	<b>477</b>	<b>3</b>	<b>2,904</b>	<b>14,230</b>
Allentown	270	1,598	1,039	64%	761	46	317	0	812	4,843
Harrisburg	214	1,712	2,026	49%	286	28	158	0	1,101	5,525
Scranton	49	870	337	73%	113	13	181	0	315	1,878
Williamsport	90	508	172	78%	125	14	95	0	153	1,157
<b>CENTRAL REGION</b>	<b>623</b>	<b>4,688</b>	<b>3,574</b>	<b>60%</b>	<b>1,285</b>	<b>101</b>	<b>751</b>	<b>0</b>	<b>2,381</b>	<b>13,403</b>
Altoona	131	417	520	51%	123	15	137	0	239	1,582
Mercer	293	931	929	57%	360	43	352	0	415	3,323
Erie	123	545	553	55%	167	18	162	1	220	1,789
Pittsburgh	271	1,443	1,265	58%	821	54	222	0	994	5,070
<b>WESTERN REGION</b>	<b>818</b>	<b>3,336</b>	<b>3,267</b>	<b>56%</b>	<b>1,471</b>	<b>130</b>	<b>873</b>	<b>1</b>	<b>1,868</b>	<b>11,764</b>
<b>TOTAL</b>	<b>2,315</b>	<b>11,492</b>	<b>12,017</b>	<b>53%</b>	<b>3,908</b>	<b>407</b>	<b>2,101</b>	<b>4</b>	<b>7,153</b>	<b>39,397</b>

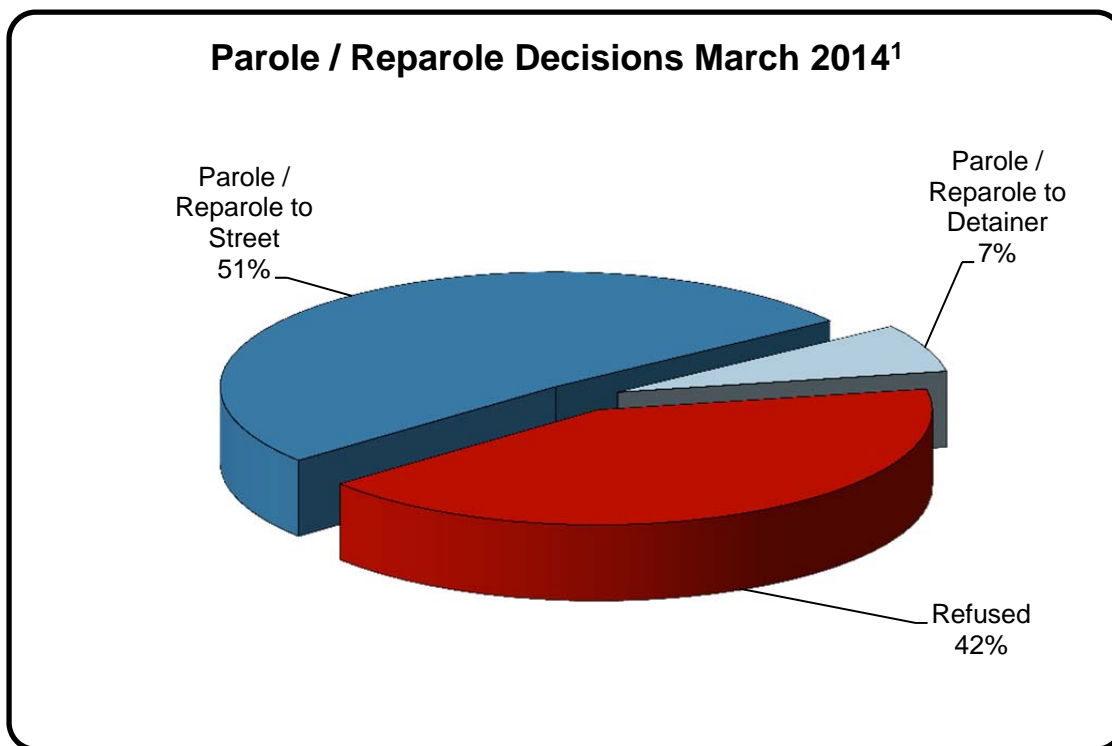
<sup>2</sup> Offender is unable to work due to a physical or mental disability, is a care provider, attends inpatient treatment, etc.

<sup>3</sup> Offender collects income assistance, workman's compensation, monthly pension, Social Security, disability payments, etc.



**Table 7**  
**BOARD DECISIONS**  
**March 2014**

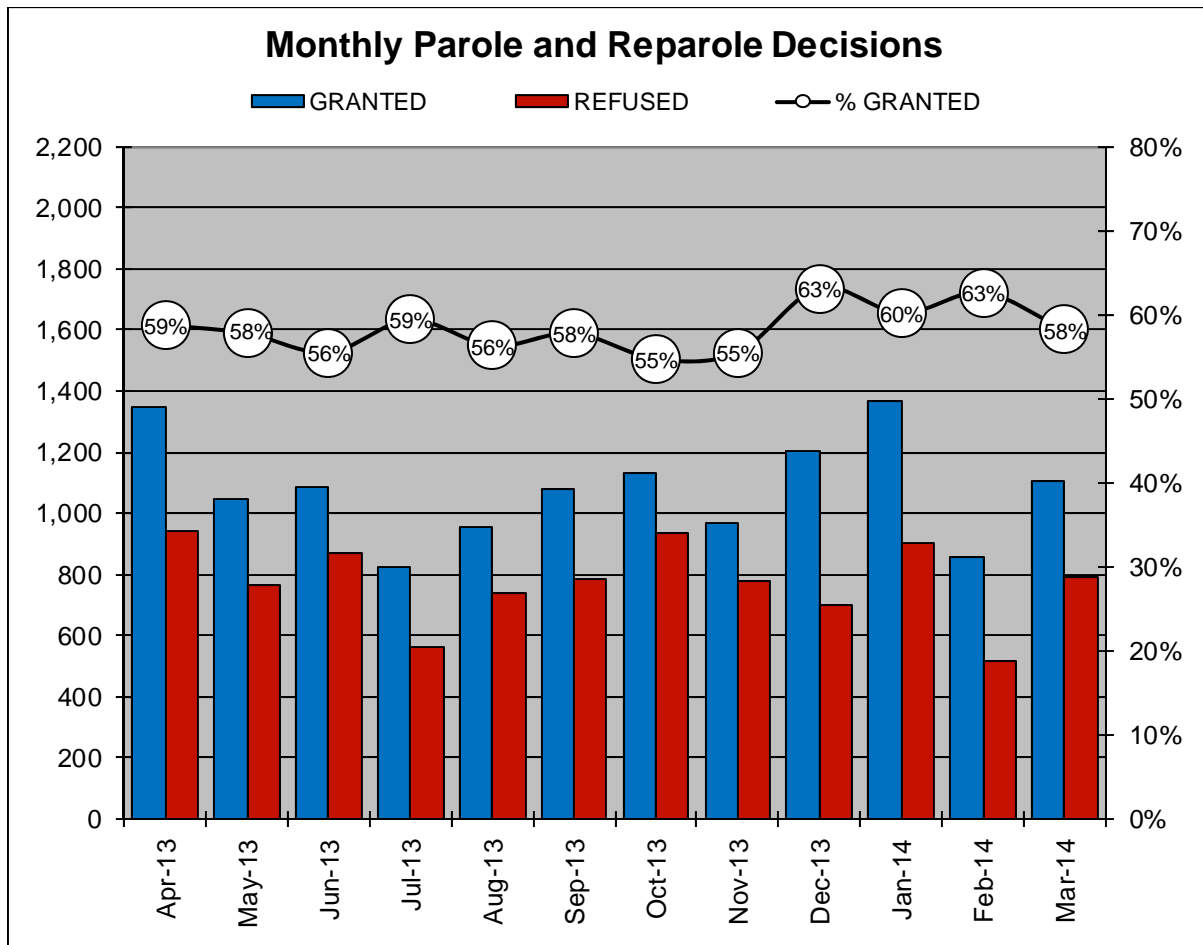
<b>Type of Decision</b>		<b>Total</b>
Parole / Reparole to Street	973	
Parole / Reparole to Detainer	129	
Refused	792	
<b>Total Considered</b>		<b>1,894</b>
Recommitments as TPV	445	
Recommitments as CPV	274	
Recommitments as CPV and TPV	21	
<b>Total Recommitments</b>		<b>740</b>
Refer to Prior Action		119
Other Decisions		1,036
<b>Total Decisions</b>		<b>3,789</b>



<sup>1</sup> The 58% does not necessarily reflect the overall grant rate, but rather is the calculated percent of grant decisions for the total number of Board Actions produced during this period of time.

**Table 8**  
**MONTHLY PAROLE and REPAROLE DECISIONS**  
**March 2014**

MONTH-YEAR	GRANTED	REFUSED	CONSIDERED	% GRANTED
Apr-13	1,346	944	2,290	59%
May-13	1,047	766	1,813	58%
Jun-13	1,084	869	1,953	56%
Jul-13	825	564	1,389	59%
Aug-13	954	741	1,695	56%
Sep-13	1,076	786	1,862	58%
Oct-13	1,130	935	2,065	55%
Nov-13	966	775	1,741	55%
Dec-13	1,202	701	1,903	63%
Jan-14	1,367	905	2,272	60%
Feb-14	859	513	1,372	63%
Mar-14	1,102	792	1,894	58%
<b>Monthly Average Over 12 Months</b>	1,080	774	1,854	58%



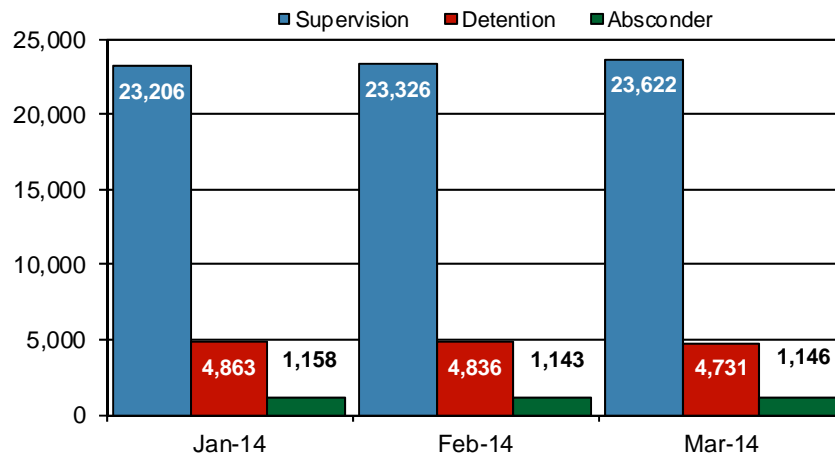


## PBPP Population Breakdown By Place of Incarceration/Jurisdiction – March 2014

Offender Status - March 2014					
Status	State Prison	County Prison	County Sentence	Other States' Cases	Total
Supervision	22,285	1,337	5,898	2,724	32,244
Absconder	1,072	74	188	0	1,334
Detention	4,474	257	948	140	5,819
<b>Total</b>	<b>27,831</b>	<b>1,668</b>	<b>7,034</b>	<b>2,864</b>	<b>39,397</b>

PBPP Monthly Population Profile						
Offender Status	Oct-13	Nov-13	Dec-13	Jan-14	Feb-14	Mar-14
<b>State sentence from state institution</b>	<b>26,955</b>	<b>27,331</b>	<b>27,613</b>	<b>27,613</b>	<b>27,662</b>	<b>27,831</b>
Supervision	21,040	21,278	21,798	21,907	22,015	22,285
Absconder	1,089	1,081	1,105	1,085	1,070	1,072
Detention	4,826	4,972	4,710	4,621	4,577	4,474
<b>State sentence from county prison</b>	<b>1,560</b>	<b>1,570</b>	<b>1,596</b>	<b>1,614</b>	<b>1,643</b>	<b>1,668</b>
Supervision	1,239	1,260	1,290	1,299	1,311	1,337
Absconder	67	65	69	73	73	74
Detention	254	245	237	242	259	257
<b>County sentence Prob &amp; Parole</b>	<b>6,754</b>	<b>6,836</b>	<b>6,926</b>	<b>7,021</b>	<b>7,025</b>	<b>7,034</b>
Supervision	5,648	5,718	5,814	5,919	5,896	5,898
Absconder	169	165	174	172	189	188
Detention	937	953	938	930	940	948
<b>Other states' sentence Prob &amp; Parole</b>	<b>2,885</b>	<b>2,856</b>	<b>2,901</b>	<b>2,935</b>	<b>2,903</b>	<b>2,864</b>
Supervision	2,747	2,710	2,770	2,804	2,762	2,724
Absconder	0	0	0	0	0	0
Detention	138	146	131	131	141	140
<b>PBPP Population end of month</b>	<b>38,154</b>	<b>38,593</b>	<b>39,036</b>	<b>39,183</b>	<b>39,233</b>	<b>39,397</b>

### State Sentence Cases by Offender Status



## PBPP Population Breakdown By Place of Incarceration/Jurisdiction – March 2014

Monthly Count of Grant and Refuse Board Actions							
Type of Decision	County Prison			State Prison			All Grant/Refuse Board Actions
	Grant	Refuse	Total	Grant	Refuse	Total	
April 2013	24	8	32	1,322	936	2,258	<b>2,290</b>
May 2013	18	9	27	1,029	757	1,786	<b>1,813</b>
June 2013	5	7	12	1,079	862	1,941	<b>1,953</b>
July 2013	4	4	8	821	560	1,381	<b>1,389</b>
August 2013	6	2	8	948	739	1,687	<b>1,695</b>
September 2013	8	1	9	1,068	785	1,853	<b>1,862</b>
October 2013	15	5	20	1,115	930	2,045	<b>2,065</b>
November 2013	5	6	11	961	769	1,730	<b>1,741</b>
December 2013	13	7	20	1,189	694	1,883	<b>1,903</b>
January 2014	5	5	10	1,362	900	2,262	<b>2,272</b>
February 2014	11	1	12	848	512	1,360	<b>1,372</b>
March 2014	6	4	10	1,096	788	1,884	<b>1,894</b>
<b>2014 Total</b>	<b>22</b>	<b>10</b>	<b>32</b>	<b>3,306</b>	<b>2,200</b>	<b>5,506</b>	<b>5,538</b>

Additions and Deletions						
	Oct-13	Nov-13	Dec-13	Jan-14	Feb-14	Mar-14
<b>Total Additions</b>	<b>1,415</b>	<b>1,451</b>	<b>1,670</b>	<b>1,626</b>	<b>1,317</b>	<b>1,662</b>
State sentence - State Prison	960	1,003	1,125	1,122	955	1,217
State sentence - County Prison	76	70	77	95	81	87
County sentence Prob & Parole	244	258	304	257	169	215
Other states' sentence	135	120	164	152	112	143
<b>Total Deletions</b>	<b>1,541</b>	<b>1,010</b>	<b>1,202</b>	<b>1,469</b>	<b>1,255</b>	<b>1,496</b>
<b>State sentence - State Prison</b>	<b>953</b>	<b>577</b>	<b>708</b>	<b>984</b>	<b>819</b>	<b>954</b>
<i>Technical Violator</i>	310	179	225	320	271	299
<i>Convicted Violator</i>	245	113	158	186	193	265
<i>Successful Completion</i>	357	265	292	425	323	353
<i>Other Case Closure</i>	41	20	33	53	32	37
<b>State sentence - County Prison</b>	<b>67</b>	<b>45</b>	<b>53</b>	<b>57</b>	<b>51</b>	<b>64</b>
<i>Technical Violator</i>	12	11	8	14	17	20
<i>Convicted Violator</i>	16	9	9	6	7	8
<i>Successful Completion</i>	34	22	35	31	25	32
<i>Other Case Closure</i>	5	3	1	6	2	4
<b>County sentence Prob &amp; Parole</b>	<b>360</b>	<b>241</b>	<b>322</b>	<b>305</b>	<b>240</b>	<b>293</b>
<i>Technical Violator</i>	62	34	43	44	39	41
<i>Convicted Violator</i>	38	12	27	29	26	34
<i>Successful Completion</i>	183	126	168	144	115	129
<i>Other Case Closure</i>	77	69	84	88	60	89
<b>Other states' sentence</b>	<b>161</b>	<b>147</b>	<b>119</b>	<b>123</b>	<b>145</b>	<b>185</b>
<i>Technical Violator</i>	4	0	1	1	1	0
<i>Convicted Violator</i>	0	2	2	3	1	5
<i>Successful Completion</i>	55	50	52	50	60	60
<i>Other Case Closure</i>	102	95	64	69	83	120
<b>PBPP Population end of month</b>	<b>38,154</b>	<b>38,593</b>	<b>39,036</b>	<b>39,183</b>	<b>39,233</b>	<b>39,397</b>