

# COMMONWEALTH OF PENNSYLVANIA

## Board of Probation and Parole

### MONTHLY PROGRAM REPORT

August 2013



**Tom Corbett**  
Governor

Michael C. Potteiger  
Chairman

Randy P. Feathers  
Member

Michael L. Green  
Member

Craig R. McKay  
Member

Judith E. Viglione  
Member

C. James Fox  
Member

Jeffrey R. Imboden  
Member

John R. Tuttle  
Member

Lloyd A. White  
Member

Carol Lavery  
Victim Advocate

**PBPP**  
AN EQUAL OPPORTUNITY EMPLOYER

Published September 13, 2013 by the PBPP Statistical Reporting and Evidence-Based Program Evaluation Office

Copyright © 2013 Commonwealth of Pennsylvania, Board of Probation and Parole. All rights reserved.

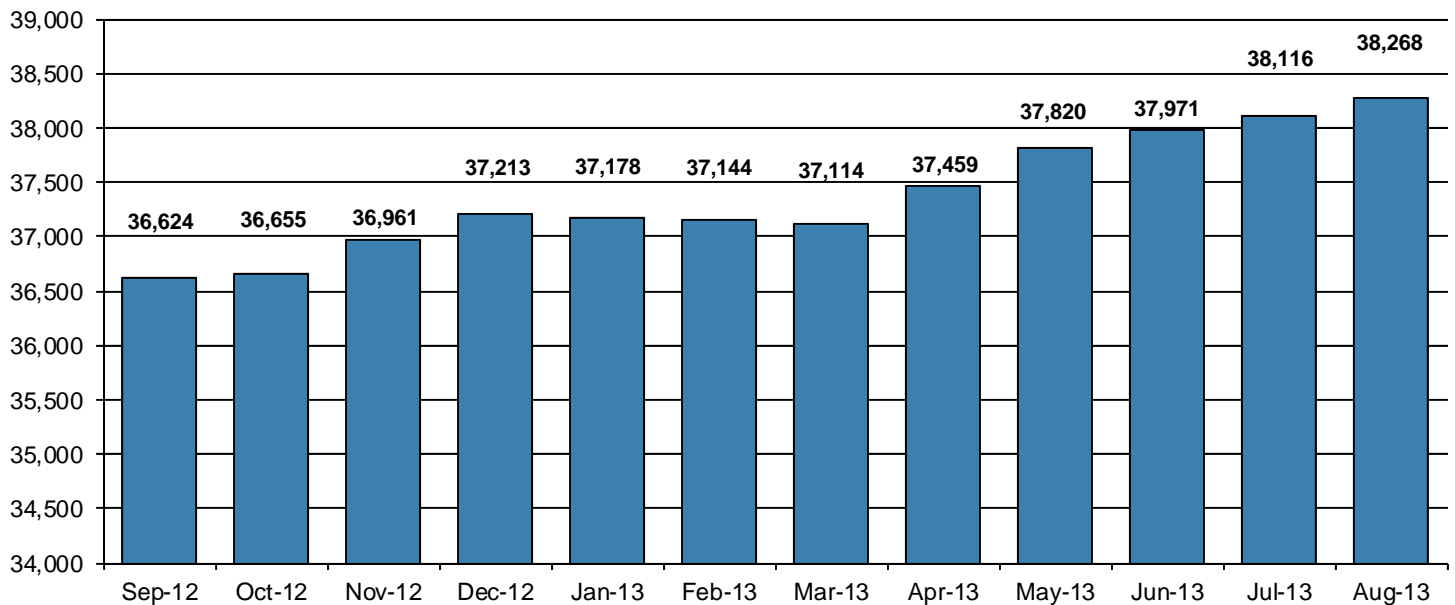
**Table 1**  
**WORKLOAD AND POPULATION CHANGES BY REGION / DISTRICT**  
**August 2013**

REGION / DISTRICT	Beginning Fiscal Yr <sup>1</sup> July 2012	Current Month Population	Fiscal YTD Index	Additions	Deletions		Number of Agents <sup>2</sup>	Average Workload	Total Workload
					Recommits/ Revocations	Other Deletions			
CHESTER	3,154	3,145	100	75	28	71	39	132	5,157
PHILADELPHIA	10,676	10,709	100	353	112	182	129	131	16,930
<b>EASTERN REGION</b>	<b>13,830</b>	<b>13,854</b>	<b>100</b>	<b>428</b>	<b>140</b>	<b>253</b>	<b>168</b>	<b>131</b>	<b>22,088</b>
ALLENTOWN	4,466	4,568	102	190	68	68	57	141	8,011
HARRISBURG	5,328	5,404	101	179	88	99	66	148	9,794
SCRANTON	1,961	1,893	97	63	34	50	30	116	3,474
WILLIAMSPORT	1,104	1,167	106	37	11	15	15	147	2,199
<b>CENTRAL REGION</b>	<b>12,859</b>	<b>13,032</b>	<b>101</b>	<b>469</b>	<b>201</b>	<b>232</b>	<b>168</b>	<b>140</b>	<b>23,477</b>
ALTOONA	1,502	1,482	99	60	34	29	22	131	2,886
MERCER	3,151	3,125	99	135	52	127	42	142	5,981
ERIE	1,762	1,796	102	81	19	36	26	128	3,318
PITTSBURGH	4,867	4,979	102	249	63	77	69	134	9,222
<b>WESTERN REGION</b>	<b>11,282</b>	<b>11,382</b>	<b>101</b>	<b>525</b>	<b>168</b>	<b>269</b>	<b>159</b>	<b>135</b>	<b>21,408</b>
<b>TOTAL Supervised</b>	<b>37,971</b>	<b>38,268</b>	<b>101</b>	<b>1,422</b>	<b>509</b>	<b>754</b>	<b>495</b>	<b>135</b>	<b>66,973</b>

<sup>1</sup> effective June 30<sup>2</sup> Filled agent positions

PA Offenders in Other States	<b>3,189</b>	<b>3,149</b>	<b>99</b>	<b>63</b>	<b>18</b>	<b>68</b>
------------------------------	--------------	--------------	-----------	-----------	-----------	-----------

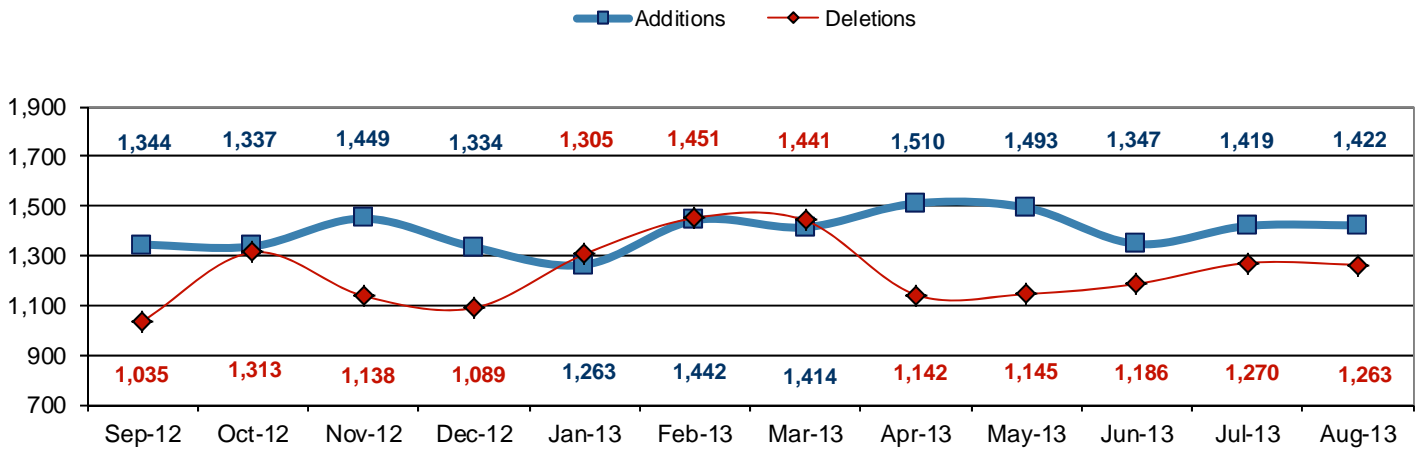
**Population - Retrospective Year View**



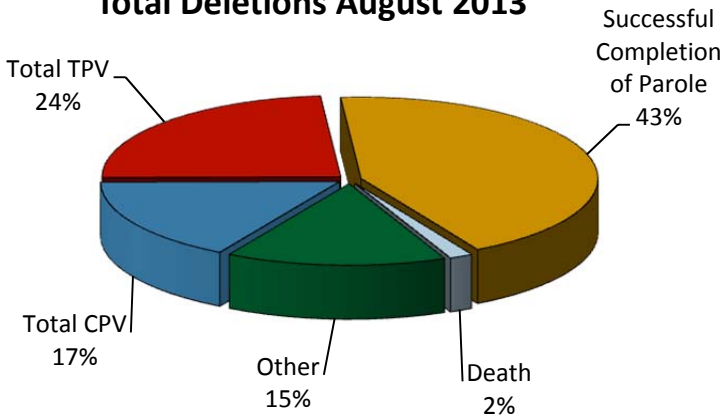
**Table 2  
SUPERVISED POPULATION ADDITIONS AND DELETIONS  
August 2013**

Population Additions and Deletions	Parole	Reparole	Special County Probation	Special County Parole	Other States' Probation	Other States' Parole	Monthly Total	Fiscal YTD Total
<b>ADDITIONS</b>	818	285	132	55	105	27	1,422	2,841
<b>DELETIONS-RECOMMITMENTS</b>								
<i>Convicted Parole Violator</i>								
State Corrections	137	26	4	0	0	0	167	341
County Corrections	9	2	27	4	0	0	42	77
Other States	0	0	0	0	0	0	0	2
<i>Total Convicted Parole Violator</i>	146	28	31	4	0	0	209	420
<i>Technical Parole Violator</i>								
State Corrections	184	70	2	0	0	0	256	483
County Corrections	5	2	21	14	0	0	42	82
Other States	0	0	0	0	2	0	2	4
<i>Total Technical Parole Violator</i>	189	72	23	14	2	0	300	569
<b>TOTAL RECOMMITMENTS</b>	335	100	54	18	2	0	509	989
Deletion Successful Completion	274	62	112	31	56	11	546	1,099
Deletion Death	12	5	3	0	0	0	20	40
Deletion Other	14	6	72	6	73	17	188	405
<b>TOTAL DELETIONS</b>	635	173	241	55	131	28	1,263	2,533

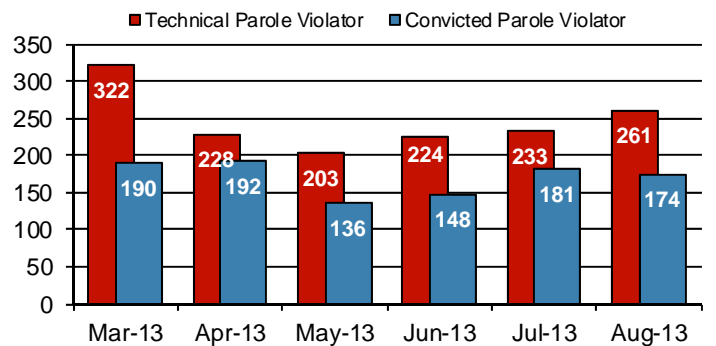
**Population Additions & Deletions-Retrospective Year View**



**Total Deletions August 2013**



**State Sentence Parole Revocations\***



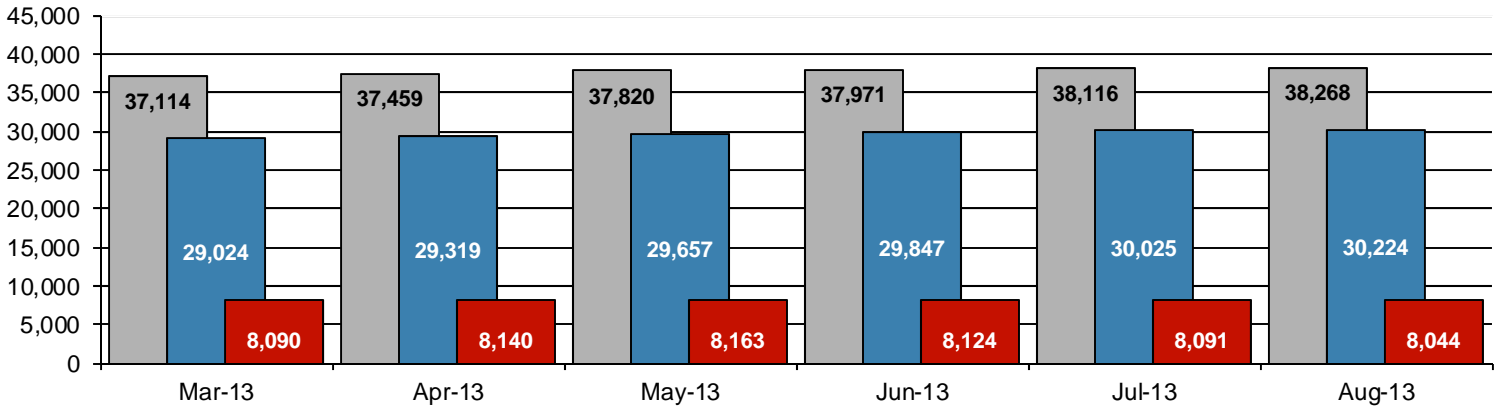
\* These revocations represent field case closure records and are dependent on case processing.

**Table 3**  
**SUPERVISED POPULATION BY ORIGINATING JURISDICTION and REGION / DISTRICT**  
**August 2013**

Region / District	PA Parole State Sentence				County		Other States		Total Population
	State Prisons	Boot Camp	County Prisons	Subtotal	Special Probation	Special Parole	Probation	Parole	
Chester	1,944	37	150	2,131	671	20	269	54	3,145
Philadelphia	8,251	172	274	8,697	1,278	16	554	164	10,709
<b>Eastern Region</b>	<b>10,195</b>	<b>209</b>	<b>424</b>	<b>10,828</b>	<b>1,949</b>	<b>36</b>	<b>823</b>	<b>218</b>	<b>13,854</b>
Allentown	3,172	97	333	3,602	484	1	400	81	4,568
Harrisburg	4,304	202	202	4,708	334	4	295	63	5,404
Scranton	1,300	12	167	1,479	167	1	177	69	1,893
Williamsport	807	9	56	872	150	5	116	24	1,167
<b>Central Region</b>	<b>9,583</b>	<b>320</b>	<b>758</b>	<b>10,661</b>	<b>1,135</b>	<b>11</b>	<b>988</b>	<b>237</b>	<b>13,032</b>
Altoona	964	23	76	1,063	268	48	80	23	1,482
Mercer	784	27	44	855	1,315	829	106	20	3,125
Erie	1,180	63	213	1,456	195	51	73	21	1,796
Pittsburgh	3,371	246	128	3,745	861	49	251	73	4,979
<b>Western Region</b>	<b>6,299</b>	<b>359</b>	<b>461</b>	<b>7,119</b>	<b>2,639</b>	<b>977</b>	<b>510</b>	<b>137</b>	<b>11,382</b>
<b>Total</b>	<b>26,077</b>	<b>888</b>	<b>1,643</b>	<b>28,608</b>	<b>5,723</b>	<b>1,024</b>	<b>2,321</b>	<b>592</b>	<b>38,268</b>
<b>Percent of Total</b>	<b>68%</b>	<b>2%</b>	<b>4%</b>	<b>74%</b>	<b>15%</b>	<b>3%</b>	<b>6%</b>	<b>2%</b>	<b>100%</b>

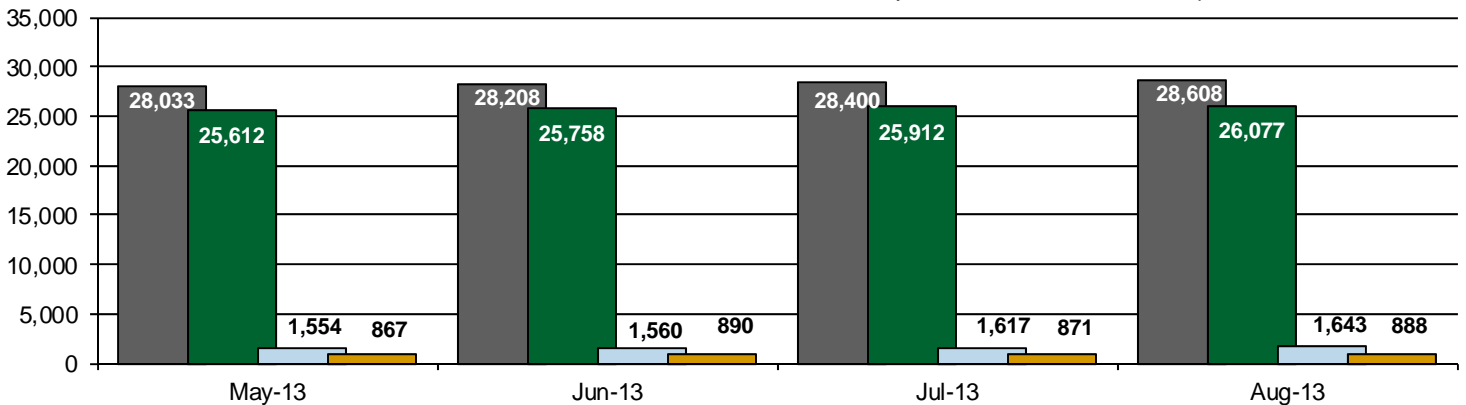
**Parole and Probation Supervised Populations**

■ Total Population  
 ■ Parole  
 ■ Probation



**Supervised State Sentence Cases**

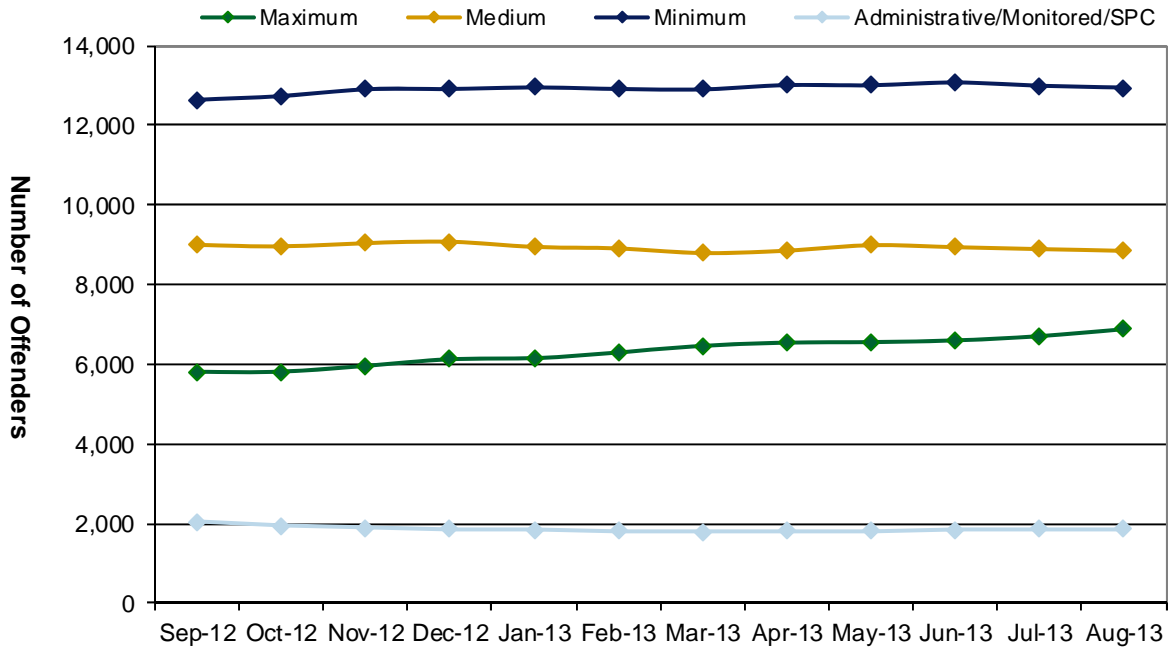
■ Total State Sentence Cases  
 ■ State Prison Cases  
 ■ County Prison Cases  
 ■ Boot Camp Cases



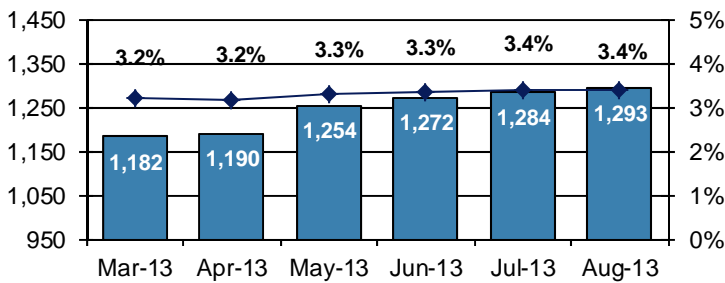
**Table 4**  
**SUPERVISED POPULATION BY GRADE OF SUPERVISION and REGION / DISTRICT**  
**August 2013**

Region / District	Reporting							Non-Reporting		Total Population
	Enhanced	Maximum	Medium	Minimum	ADM/MON /SPC	Not Classified	Subtotal	Absconder	Detainees	
Chester	1	291	706	1,423	224	4	2,649	52	444	3,145
Philadelphia	4	1,634	2,111	4,005	383	71	8,208	423	2,078	10,709
<b>Eastern Region</b>	<b>5</b>	<b>1,925</b>	<b>2,817</b>	<b>5,428</b>	<b>607</b>	<b>75</b>	<b>10,857</b>	<b>475</b>	<b>2,522</b>	<b>13,854</b>
Allentown	21	1,016	1,044	1,393	219	45	3,738	209	621	4,568
Harrisburg	33	1,153	1,233	1,603	294	19	4,335	209	860	5,404
Scranton	6	278	452	664	123	1	1,524	58	311	1,893
Williamsport	1	138	315	417	131	0	1,002	15	150	1,167
<b>Central Region</b>	<b>61</b>	<b>2,585</b>	<b>3,044</b>	<b>4,077</b>	<b>767</b>	<b>65</b>	<b>10,599</b>	<b>491</b>	<b>1,942</b>	<b>13,032</b>
Altoona	2	287	403	483	63	1	1,239	29	214	1,482
Mercer	6	317	907	1,256	237	0	2,723	67	335	3,125
Erie	5	470	389	544	123	1	1,532	52	212	1,796
Pittsburgh	54	1,294	1,285	1,156	56	11	3,856	179	944	4,979
<b>Western Region</b>	<b>67</b>	<b>2,368</b>	<b>2,984</b>	<b>3,439</b>	<b>479</b>	<b>13</b>	<b>9,350</b>	<b>327</b>	<b>1,705</b>	<b>11,382</b>
<b>Total</b>	<b>133</b>	<b>6,878</b>	<b>8,845</b>	<b>12,944</b>	<b>1,853</b>	<b>153</b>	<b>30,806</b>	<b>1,293</b>	<b>6,169</b>	<b>38,268</b>
<b>Percent of Total</b>	<b>&lt;1%</b>	<b>18%</b>	<b>23%</b>	<b>34%</b>	<b>5%</b>	<b>&lt;1%</b>	<b>81%</b>	<b>3%</b>	<b>16%</b>	<b>100%</b>

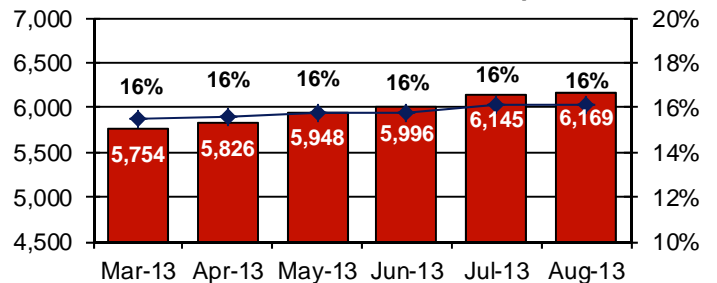
**PBPP Active Cases By Supervision Level**



**Number of Absconders and % of Population**



**Number of Detainees and % of Population**



**Table 5**  
**SUPERVISED POPULATION BY GENDER, RACE and REGION / DISTRICT**  
**August 2013**

Region / District	Male					Female					% Male	Total Population
	White	Black	Hispanic	Other <sup>1</sup>	Total	White	Black	Hispanic	Other <sup>1</sup>	Total		
Chester	1,297	1,404	132	35	2,868	195	67	7	8	277	91%	3,145
Philadelphia	1,381	7,166	1,310	155	10,012	200	428	59	10	697	93%	10,709
<b>EASTERN REGION</b>	<b>2,678</b>	<b>8,570</b>	<b>1,442</b>	<b>190</b>	<b>12,880</b>	<b>395</b>	<b>495</b>	<b>66</b>	<b>18</b>	<b>974</b>	<b>93%</b>	<b>13,854</b>
Allentown	2,020	965	1,069	42	4,096	322	85	60	5	472	90%	4,568
Harrisburg	2,414	1,746	589	41	4,790	437	120	51	6	614	89%	5,404
Scranton	1,175	362	106	12	1,655	203	23	11	1	238	87%	1,893
Williamsport	800	118	16	6	940	201	15	8	3	227	81%	1,167
<b>CENTRAL REGION</b>	<b>6,409</b>	<b>3,191</b>	<b>1,780</b>	<b>101</b>	<b>11,481</b>	<b>1,163</b>	<b>243</b>	<b>130</b>	<b>15</b>	<b>1,551</b>	<b>88%</b>	<b>13,032</b>
Altoona	1,074	142	6	7	1,229	239	14	0	0	253	83%	1,482
Mercer	2,042	353	11	7	2,413	634	72	2	4	712	77%	3,125
Erie	1,083	402	55	10	1,550	196	43	5	2	246	86%	1,796
Pittsburgh	2,120	2,251	40	27	4,438	375	157	2	7	541	89%	4,979
<b>WESTERN REGION</b>	<b>6,319</b>	<b>3,148</b>	<b>112</b>	<b>51</b>	<b>9,630</b>	<b>1,444</b>	<b>286</b>	<b>9</b>	<b>13</b>	<b>1,752</b>	<b>85%</b>	<b>11,382</b>
<b>TOTAL</b>	<b>15,406</b>	<b>14,909</b>	<b>3,334</b>	<b>342</b>	<b>33,991</b>	<b>3,002</b>	<b>1,024</b>	<b>205</b>	<b>46</b>	<b>4,277</b>	<b>89%</b>	<b>38,268</b>

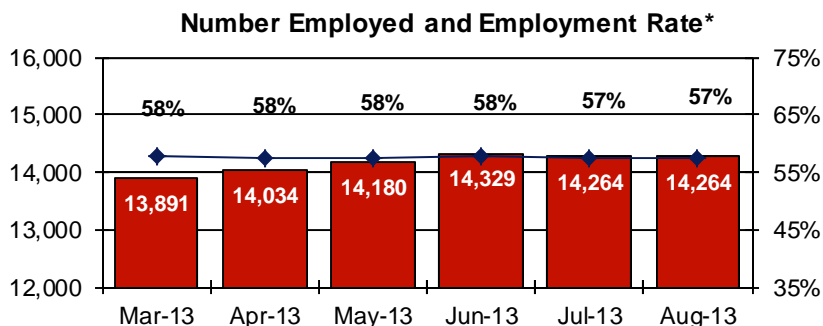
<sup>1</sup> "Other" includes Asian, Pacific Islander, Native American, Native Alaskan, and cases not elsewhere classified.

**Table 6**  
**SUPERVISED POPULATION BY EMPLOYMENT STATUS and REGION / DISTRICT**  
**August 2013**

Region / District	In Labor Force				Not In Labor Force					Total Population
	Employed Part Time	Employed Full Time	Unemployed	Employment Rate	Unable to Work <sup>2</sup>	Student	Unearned Income <sup>3</sup>	Unknown	Non-Reporting	
Chester	170	1,225	858	62%	288	29	79	0	496	3,145
Philadelphia	672	2,413	3,767	45%	764	156	430	6	2,501	10,709
<b>EASTERN REGION</b>	<b>842</b>	<b>3,638</b>	<b>4,625</b>	<b>49%</b>	<b>1,052</b>	<b>185</b>	<b>509</b>	<b>6</b>	<b>2,997</b>	<b>13,854</b>
Allentown	287	1,607	863	69%	614	51	315	1	830	4,568
Harrisburg	245	1,772	1,818	53%	298	26	174	2	1,069	5,404
Scranton	51	953	247	80%	69	10	194	0	369	1,893
Williamsport	96	521	170	78%	103	21	91	0	165	1,167
<b>CENTRAL REGION</b>	<b>679</b>	<b>4,853</b>	<b>3,098</b>	<b>64%</b>	<b>1,084</b>	<b>108</b>	<b>774</b>	<b>3</b>	<b>2,433</b>	<b>13,032</b>
Altoona	132	448	389	60%	104	15	151	0	243	1,482
Mercer	285	930	801	60%	339	37	331	0	402	3,125
Erie	121	545	541	55%	148	22	155	0	264	1,796
Pittsburgh	267	1,524	1,102	62%	672	48	243	0	1,123	4,979
<b>WESTERN REGION</b>	<b>805</b>	<b>3,447</b>	<b>2,833</b>	<b>60%</b>	<b>1,263</b>	<b>122</b>	<b>880</b>	<b>0</b>	<b>2,032</b>	<b>11,382</b>
<b>TOTAL</b>	<b>2,326</b>	<b>11,938</b>	<b>10,556</b>	<b>57%</b>	<b>3,399</b>	<b>415</b>	<b>2,163</b>	<b>9</b>	<b>7,462</b>	<b>38,268</b>

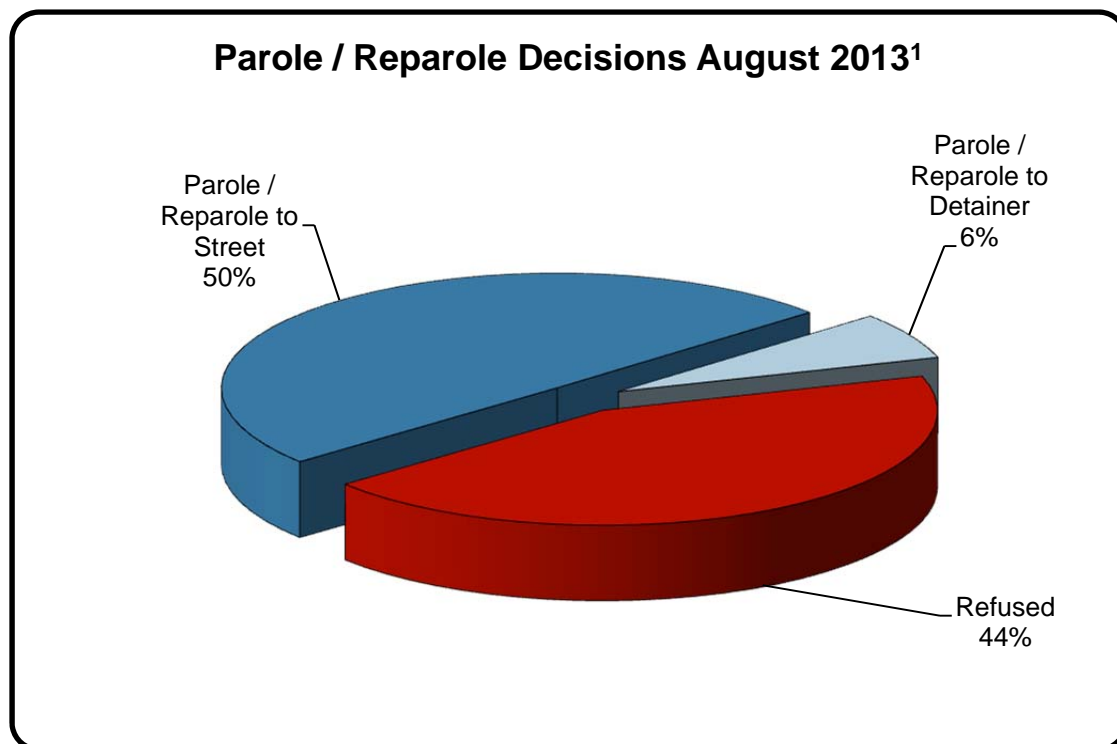
<sup>2</sup> Offender is unable to work due to a physical or mental disability, is a care provider, attends inpatient treatment, etc.

<sup>3</sup> Offender collects income assistance, workman's compensation, monthly pension, Social Security, disability payments, etc.



**Table 7**  
**BOARD DECISIONS**  
**August 2013**

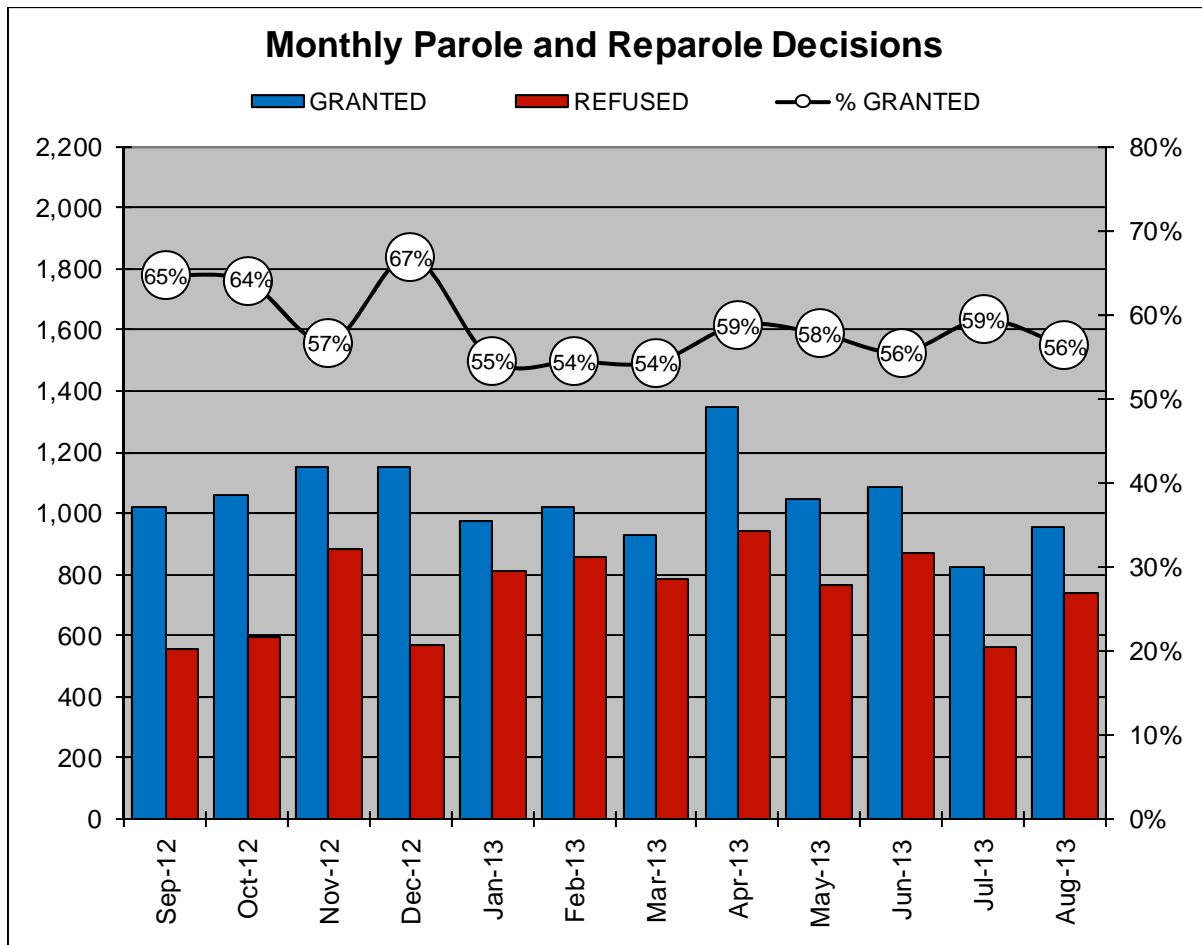
<b>Type of Decision</b>		<b>Total</b>
Parole / Reparole to Street	842	
Parole / Reparole to Detainer	112	
Refused	741	
<b>Total Considered</b>		<b>1,695</b>
Recommitments as TPV	393	
Recommitments as CPV	201	
Recommitments as CPV and TPV	26	
<b>Total Recommitments</b>		<b>620</b>
Refer to Prior Action		77
Other Decisions		988
<b>Total Decisions</b>		<b>3,380</b>



<sup>1</sup> The 56% does not necessarily reflect the overall grant rate, but rather is the calculated percent of grant decisions for the total number of Board Actions produced during this period of time.

**Table 8**  
**MONTHLY PAROLE and REPAROLE DECISIONS**  
**August 2013**

MONTH-YEAR	GRANTED	REFUSED	CONSIDERED	% GRANTED
Sep-12	1,022	557	1,579	65%
Oct-12	1,059	596	1,655	64%
Nov-12	1,152	881	2,033	57%
Dec-12	1,151	570	1,721	67%
Jan-13	972	810	1,782	55%
Feb-13	1,020	854	1,874	54%
Mar-13	931	782	1,713	54%
Apr-13	1,346	944	2,290	59%
May-13	1,047	766	1,813	58%
Jun-13	1,084	869	1,953	56%
Jul-13	825	564	1,389	59%
Aug-13	954	741	1,695	56%
<b>Monthly Average Over 12 Months</b>	1,047	745	1,791	58%



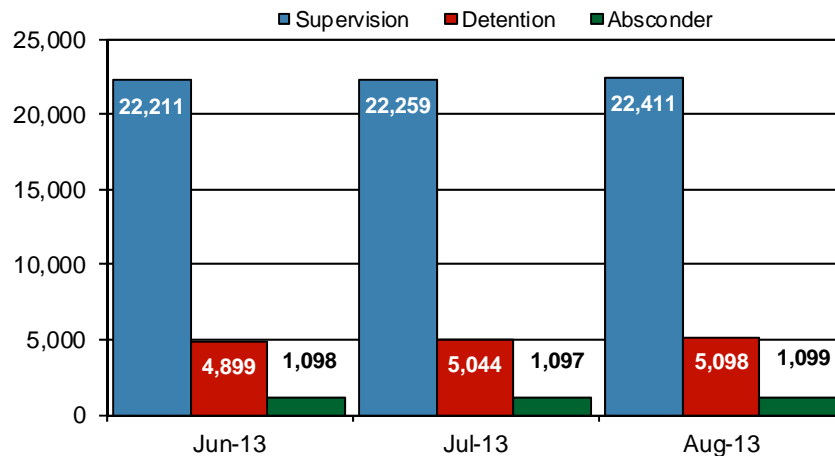


## PBPP Population Breakdown By Place of Incarceration/Jurisdiction – August 2013

Offender Status - August 2013					
Status	State Prison	County Prison	County Sentence	Other States' Cases	Total
Supervision	21,091	1,320	5,603	2,792	30,806
Absconder	1,037	62	194	0	1,293
Detention	4,837	261	950	121	6,169
<b>Total</b>	<b>26,965</b>	<b>1,643</b>	<b>6,747</b>	<b>2,913</b>	<b>38,268</b>

PBPP Monthly Population Profile						
Offender Status	Mar-13	Apr-13	May-13	Jun-13	Jul-13	Aug-13
<b>State sentence from state institution</b>	<b>25,826</b>	<b>26,140</b>	<b>26,479</b>	<b>26,648</b>	<b>26,783</b>	<b>26,965</b>
<i>Supervision</i>	20,484	20,696	20,868	20,963	20,964	21,091
<i>Absconder</i>	941	958	1,016	1,046	1,043	1,037
<i>Detention</i>	4,401	4,486	4,595	4,639	4,776	4,837
<b>State sentence from county prison</b>	<b>1,559</b>	<b>1,555</b>	<b>1,554</b>	<b>1,560</b>	<b>1,617</b>	<b>1,643</b>
<i>Supervision</i>	1,255	1,259	1,245	1,248	1,295	1,320
<i>Absconder</i>	52	47	49	52	54	62
<i>Detention</i>	252	249	260	260	268	261
<b>County sentence Prob &amp; Parole</b>	<b>6,807</b>	<b>6,788</b>	<b>6,805</b>	<b>6,811</b>	<b>6,799</b>	<b>6,747</b>
<i>Supervision</i>	5,639	5,633	5,640	5,656	5,624	5,603
<i>Absconder</i>	189	185	187	174	187	194
<i>Detention</i>	979	970	978	981	988	950
<b>Other states' sentence Prob &amp; Parole</b>	<b>2,922</b>	<b>2,976</b>	<b>2,982</b>	<b>2,952</b>	<b>2,917</b>	<b>2,913</b>
<i>Supervision</i>	2,800	2,855	2,865	2,836	2,804	2,792
<i>Absconder</i>	0	0	2	0	0	0
<i>Detention</i>	122	121	115	116	113	121
<b>PBPP Population end of month</b>	<b>37,114</b>	<b>37,459</b>	<b>37,820</b>	<b>37,971</b>	<b>38,116</b>	<b>38,268</b>

### State Sentence Cases by Offender Status



## PBPP Population Breakdown By Place of Incarceration/Jurisdiction – August 2013

Monthly Count of Grant and Refuse Board Actions							
Type of Decision	County Prison			State Prison			All Grant/Refuse Board Actions
	Grant	Refuse	Total	Grant	Refuse	Total	
September 2012	24	10	34	998	547	1,545	<b>1,579</b>
October 2012	20	10	30	1,039	586	1,625	<b>1,655</b>
November 2012	30	10	40	1,122	871	1,993	<b>2,033</b>
December 2012	12	7	19	1,139	563	1,702	<b>1,721</b>
January 2013	17	10	27	955	800	1,755	<b>1,782</b>
February 2013	16	5	21	1,004	849	1,853	<b>1,874</b>
March 2013	12	7	19	919	775	1,694	<b>1,713</b>
April 2013	24	8	32	1,322	936	2,258	<b>2,290</b>
May 2013	18	9	27	1,029	757	1,786	<b>1,813</b>
June 2013	5	7	12	1,079	862	1,941	<b>1,953</b>
July 2013	4	4	8	821	560	1,381	<b>1,389</b>
August 2013	6	2	8	948	739	1,687	<b>1,695</b>
<b>2013 Total</b>	<b>102</b>	<b>52</b>	<b>154</b>	<b>8,077</b>	<b>6,278</b>	<b>14,355</b>	<b>14,509</b>

Additions and Deletions						
	Mar-13	Apr-13	May-13	Jun-13	Jul-13	Aug-13
<b>Total Additions</b>	<b>1,414</b>	<b>1,510</b>	<b>1,493</b>	<b>1,347</b>	<b>1,419</b>	<b>1,422</b>
State sentence - State Prison	1,037	1,131	1,072	933	978	1,021
State sentence - County Prison	50	43	51	41	111	82
County sentence Prob & Parole	180	164	200	229	199	187
Other states' sentence	147	172	170	144	131	132
<b>Total Deletions</b>	<b>1,441</b>	<b>1,142</b>	<b>1,145</b>	<b>1,186</b>	<b>1,270</b>	<b>1,263</b>
<b>State sentence - State Prison</b>	<b>879</b>	<b>704</b>	<b>661</b>	<b>689</b>	<b>767</b>	<b>763</b>
<i>Technical Violator</i>	307	221	196	215	224	254
<i>Convicted Violator</i>	180	180	131	145	172	163
<i>Successful Completion</i>	362	271	309	302	332	313
<i>Other Case Closure</i>	30	32	25	27	39	33
<b>State sentence - County Prison</b>	<b>55</b>	<b>41</b>	<b>53</b>	<b>33</b>	<b>45</b>	<b>45</b>
<i>Technical Violator</i>	15	7	7	9	9	7
<i>Convicted Violator</i>	10	12	5	3	9	11
<i>Successful Completion</i>	24	17	38	18	26	23
<i>Other Case Closure</i>	6	5	3	3	1	4
<b>County sentence Prob &amp; Parole</b>	<b>334</b>	<b>274</b>	<b>267</b>	<b>290</b>	<b>294</b>	<b>296</b>
<i>Technical Violator</i>	56	37	36	42	34	37
<i>Convicted Violator</i>	28	26	24	33	28	35
<i>Successful Completion</i>	161	127	115	113	142	143
<i>Other Case Closure</i>	89	84	92	102	90	81
<b>Other states' sentence</b>	<b>173</b>	<b>123</b>	<b>164</b>	<b>174</b>	<b>164</b>	<b>159</b>
<i>Technical Violator</i>	1	0	3	4	2	2
<i>Convicted Violator</i>	1	2	0	1	2	0
<i>Successful Completion</i>	74	48	61	59	53	67
<i>Other Case Closure</i>	97	73	100	110	107	90
<b>PBPP Population end of month</b>	<b>37,114</b>	<b>37,459</b>	<b>37,820</b>	<b>37,971</b>	<b>38,116</b>	<b>38,268</b>