

# COMMONWEALTH OF PENNSYLVANIA

## Board of Probation and Parole

### MONTHLY PROGRAM REPORT

September 2012



**Tom Corbett**  
Governor

Michael C. Potteiger  
Chairman

C. James Fox  
Member

Michael L. Green  
Member

Jeffrey R. Imboden  
Member

Matthew T. Mangino, Esq  
Member

Craig R. McKay  
Member

John R. Tuttle  
Member

Judith E. Viglione  
Member

Lloyd A. White  
Member

Carol Lavery  
Victim Advocate

**PBPP**  
AN EQUAL OPPORTUNITY EMPLOYER

Published October 18, 2012 by the PBPP Statistical Reporting and Evidence-Based Program Evaluation Office

Copyright © 2012 Commonwealth of Pennsylvania, Board of Probation and Parole. All rights reserved.

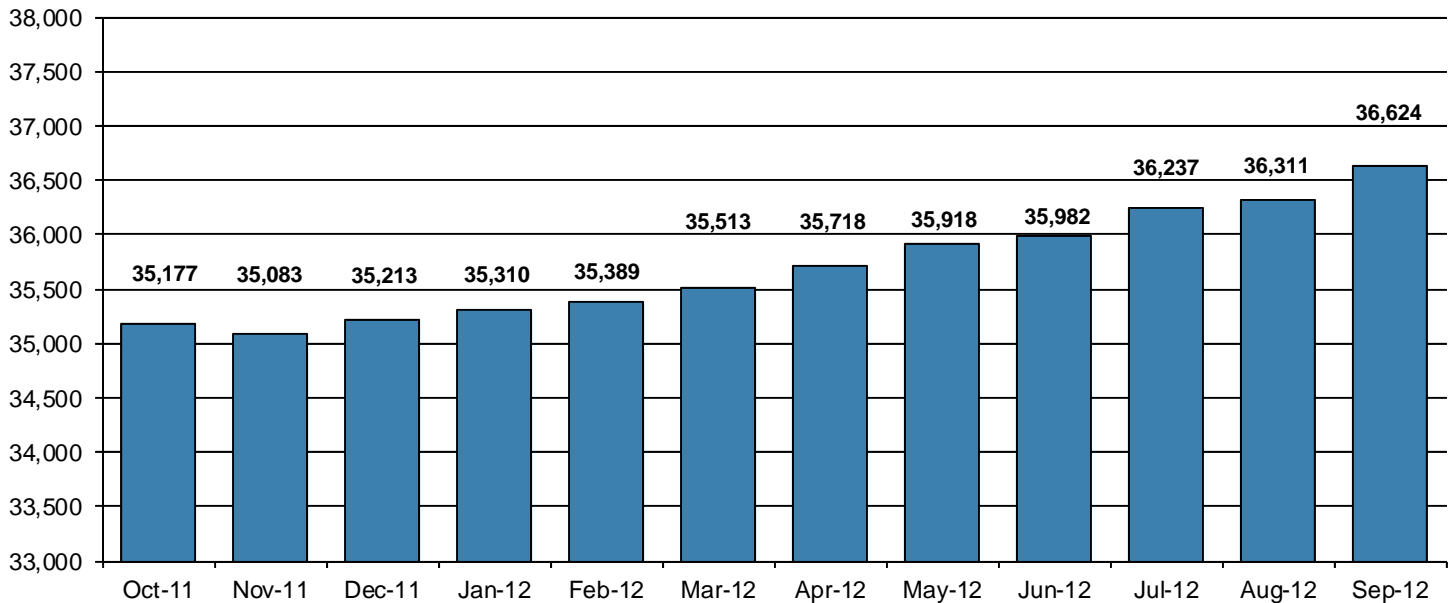
**Table 1**  
**WORKLOAD AND POPULATION CHANGES BY REGION / DISTRICT**  
**September 2012**

REGION / DISTRICT	Beginning Fiscal Yr <sup>1</sup> July 2012	Current Month Population	Fiscal YTD Index	Additions	Deletions		Number of Agents <sup>2</sup>	Average Workload	Total Workload
					Recommits/ Revocations	Other Deletions			
CHESTER	2,967	2,997	101	94	18	45	40	123	4,911
PHILADELPHIA	9,927	10,149	102	373	101	140	132	120	15,898
<b>EASTERN REGION</b>	<b>12,894</b>	<b>13,146</b>	<b>102</b>	<b>467</b>	<b>119</b>	<b>185</b>	<b>172</b>	<b>121</b>	<b>20,809</b>
ALLENTOWN	4,101	4,249	104	187	58	79	55	135	7,405
HARRISBURG	4,993	5,033	101	163	57	77	62	145	8,969
SCRANTON	1,907	1,996	105	80	11	31	31	116	3,609
WILLIAMSPORT	1,025	1,037	101	28	12	8	16	122	1,945
<b>CENTRAL REGION</b>	<b>12,026</b>	<b>12,315</b>	<b>102</b>	<b>458</b>	<b>138</b>	<b>195</b>	<b>164</b>	<b>134</b>	<b>21,927</b>
ALTOONA	1,453	1,476	102	37	18	34	22	131	2,883
MERCER	3,298	3,255	99	136	48	125	44	132	5,819
ERIE	1,669	1,691	101	57	21	22	26	118	3,058
PITTSBURGH	4,642	4,741	102	189	62	68	72	123	8,875
<b>WESTERN REGION</b>	<b>11,062</b>	<b>11,163</b>	<b>101</b>	<b>419</b>	<b>149</b>	<b>249</b>	<b>164</b>	<b>126</b>	<b>20,636</b>
<b>TOTAL Supervised</b>	<b>35,982</b>	<b>36,624</b>	<b>102</b>	<b>1,344</b>	<b>406</b>	<b>629</b>	<b>500</b>	<b>127</b>	<b>63,373</b>

<sup>1</sup> effective June 30<sup>2</sup> Filled agent positions

PA Offenders in Other States	<b>3,077</b>	<b>3,123</b>	<b>101</b>	<b>68</b>	<b>5</b>	<b>40</b>
------------------------------	--------------	--------------	------------	-----------	----------	-----------

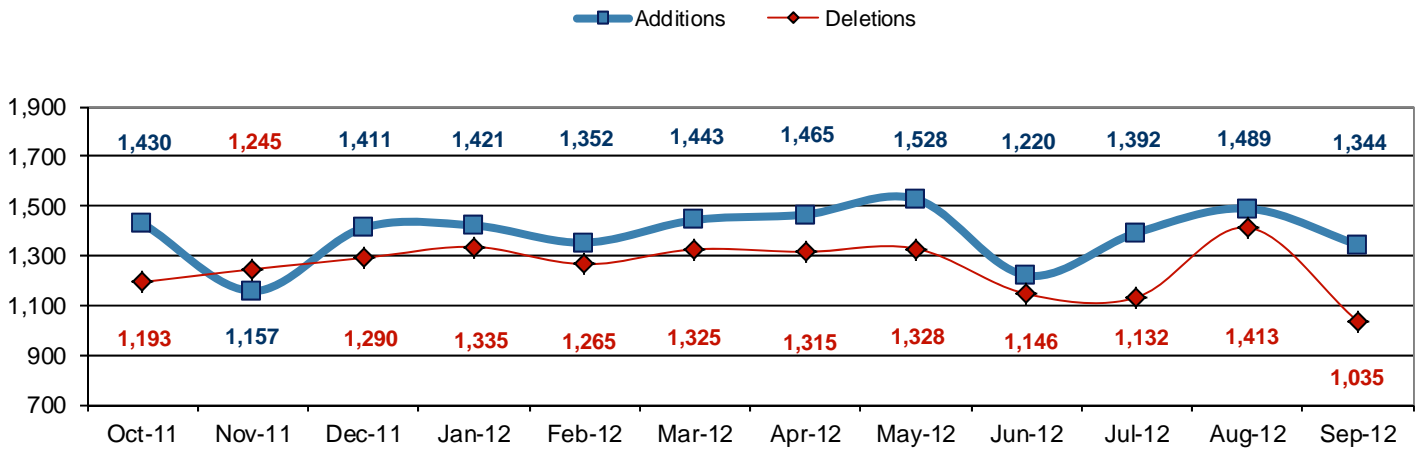
### Population - Retrospective Year View



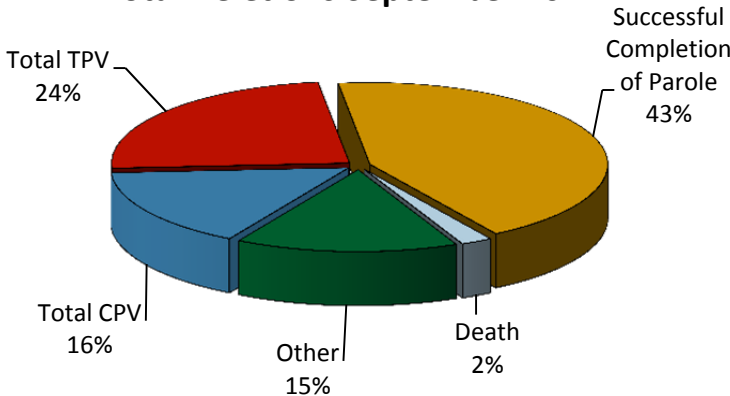
**Table 2  
SUPERVISED POPULATION ADDITIONS AND DELETIONS  
September 2012**

Population Additions and Deletions	Parole	Reparole	Special County Probation	Special County Parole	Other States' Probation	Other States' Parole	Monthly Total	Fiscal YTD Total
<b>ADDITIONS</b>	805	206	135	64	108	26	1,344	4,225
<b>DELETIONS-RECOMMITMENTS</b>								
<i>Convicted Parole Violator</i>								
State Corrections	90	33	1	0	0	0	124	469
County Corrections	7	3	15	14	0	0	39	102
Other States	0	0	0	0	0	0	0	3
<i>Total Convicted Parole Violator</i>	97	36	16	14	0	0	163	574
<i>Technical Parole Violator</i>								
State Corrections	153	43	3	0	0	0	199	717
County Corrections	5	2	23	12	0	0	42	137
Other States	0	0	0	0	2	0	2	4
<i>Total Technical Parole Violator</i>	158	45	26	12	2	0	243	858
<b>TOTAL RECOMMITMENTS</b>	255	81	42	26	2	0	406	1,432
Deletion Successful Completion	225	47	88	37	46	7	450	1,558
Deletion Death	13	1	4	1	2	1	22	67
Deletion Other	10	2	68	7	58	12	157	523
<b>TOTAL DELETIONS</b>	503	131	202	71	108	20	1,035	3,580

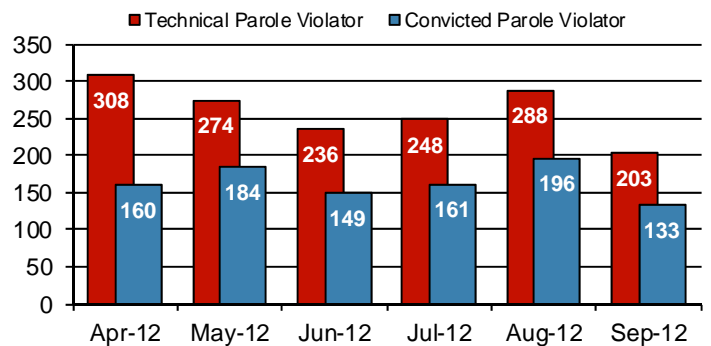
**Population Additions & Deletions-Retrospective Year View**



**Total Deletions September 2012**



**State Sentence Parole Revocations\***

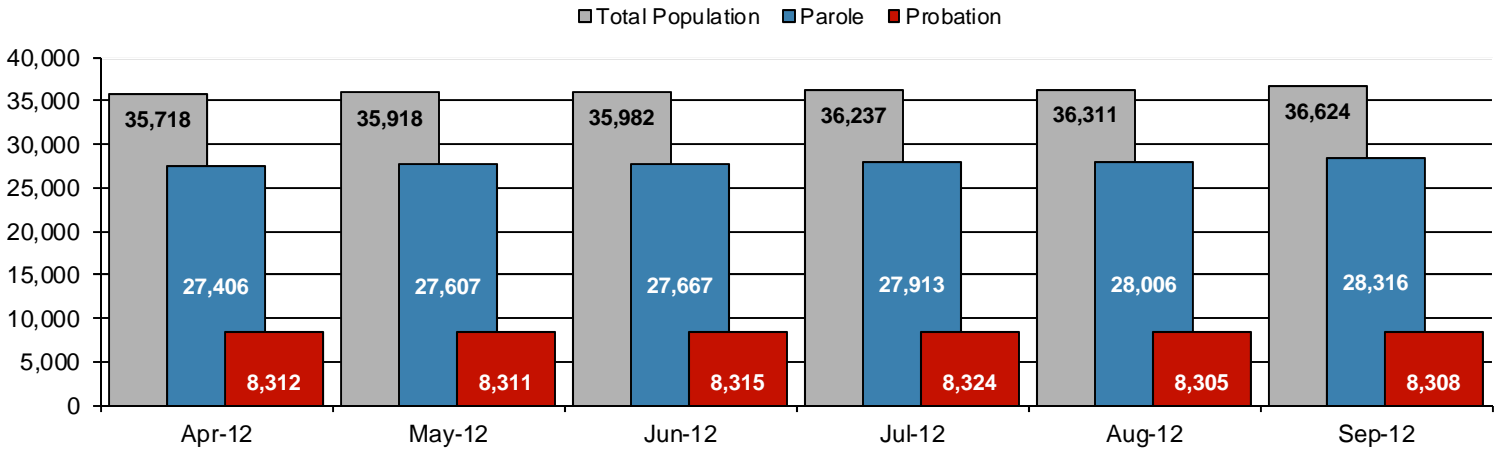


\* These revocations represent field case closure records and are dependent on case processing.

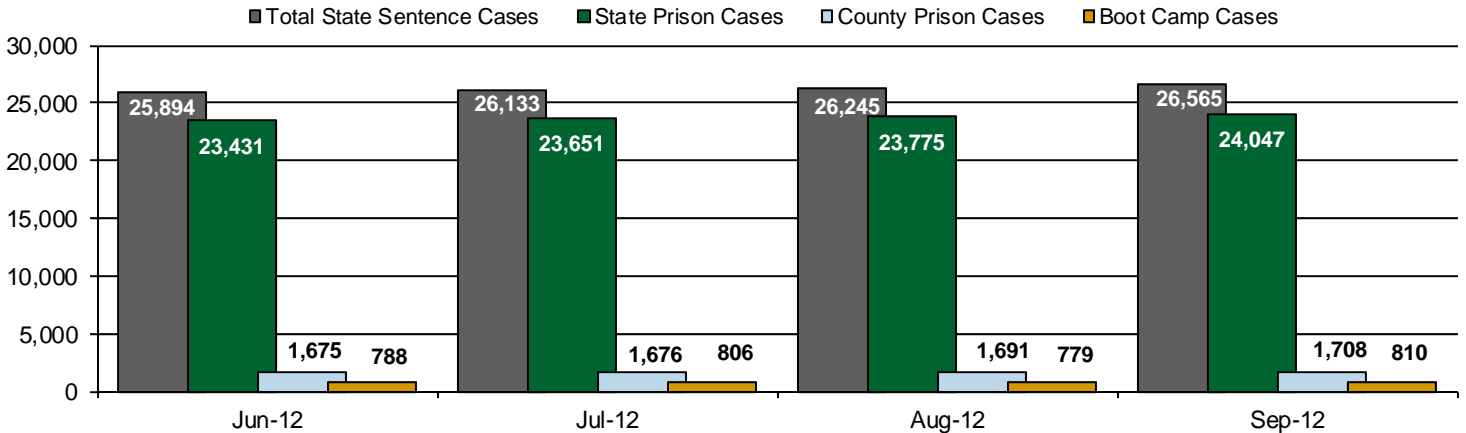
**Table 3**  
**SUPERVISED POPULATION BY ORIGINATING JURISDICTION and REGION / DISTRICT**  
**September 2012**

Region / District	PA Parole State Sentence				County		Other States		Total Population
	State Prisons	Boot Camp	County Prisons	Subtotal	Special Probation	Special Parole	Probation	Parole	
Chester	1,724	44	200	1,968	659	15	308	47	2,997
Philadelphia	7,613	144	343	8,100	1,280	14	594	161	10,149
<b>Eastern Region</b>	<b>9,337</b>	<b>188</b>	<b>543</b>	<b>10,068</b>	<b>1,939</b>	<b>29</b>	<b>902</b>	<b>208</b>	<b>13,146</b>
Allentown	2,833	113	353	3,299	469	4	384	93	4,249
Harrisburg	3,947	195	166	4,308	363	4	290	68	5,033
Scranton	1,269	7	192	1,468	223	1	216	88	1,996
Williamsport	728	15	43	786	122	11	93	25	1,037
<b>Central Region</b>	<b>8,777</b>	<b>330</b>	<b>754</b>	<b>9,861</b>	<b>1,177</b>	<b>20</b>	<b>983</b>	<b>274</b>	<b>12,315</b>
Altoona	923	16	62	1,001	302	61	85	27	1,476
Mercer	737	18	42	797	1,430	904	97	27	3,255
Erie	1,099	44	210	1,353	198	45	74	21	1,691
Pittsburgh	3,174	214	97	3,485	869	61	252	74	4,741
<b>Western Region</b>	<b>5,933</b>	<b>292</b>	<b>411</b>	<b>6,636</b>	<b>2,799</b>	<b>1,071</b>	<b>508</b>	<b>149</b>	<b>11,163</b>
<b>Total</b>	<b>24,047</b>	<b>810</b>	<b>1,708</b>	<b>26,565</b>	<b>5,915</b>	<b>1,120</b>	<b>2,393</b>	<b>631</b>	<b>36,624</b>
<b>Percent of Total</b>	<b>66%</b>	<b>2%</b>	<b>5%</b>	<b>73%</b>	<b>16%</b>	<b>3%</b>	<b>6%</b>	<b>2%</b>	<b>100%</b>

**Parole and Probation Supervised Populations**



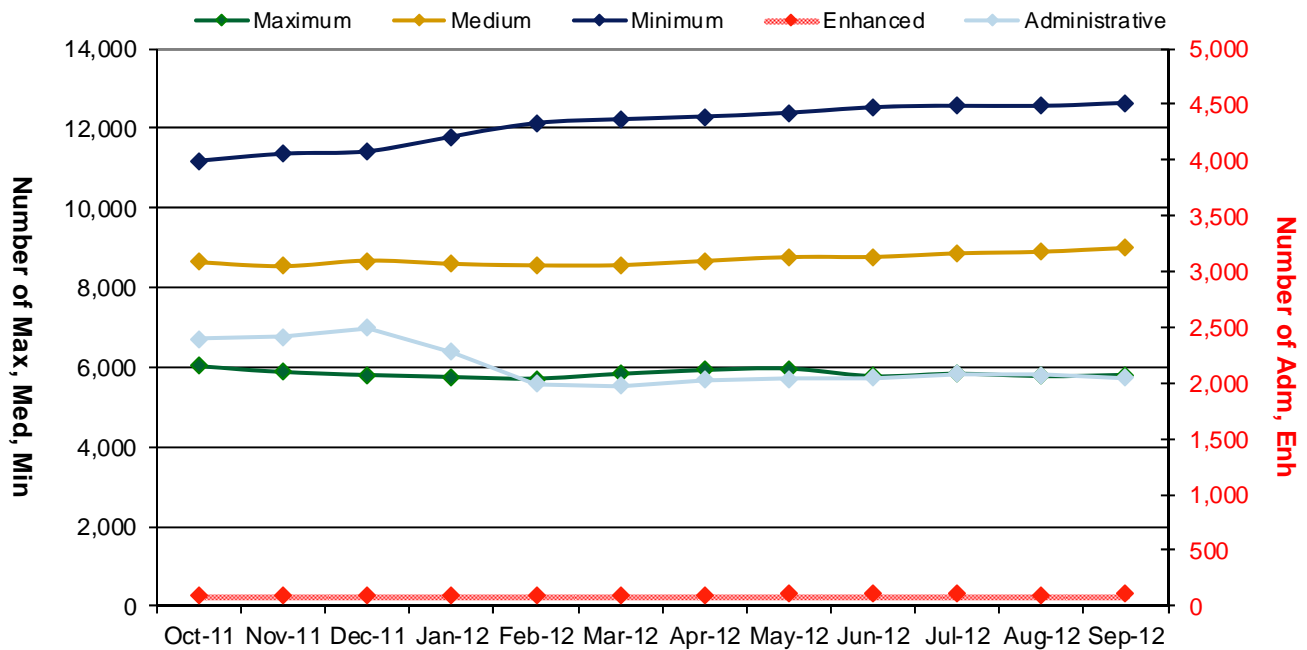
**Supervised State Sentence Cases**



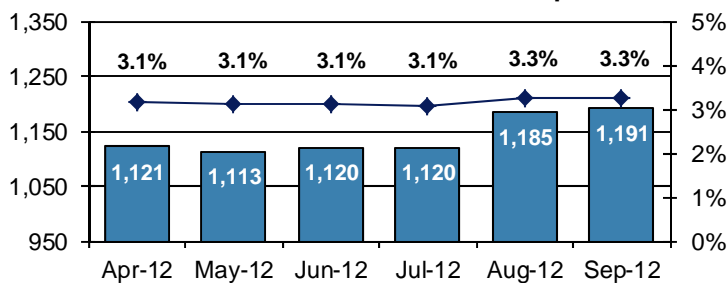
**Table 4**  
**SUPERVISED POPULATION BY GRADE OF SUPERVISION and REGION / DISTRICT**  
**September 2012**

Region / District	Reporting							Non-Reporting		Total Population
	Enhanced	Maximum	Medium	Minimum	ADM / SPC	Not Classified	Subtotal	Absconder	Detainees	
Chester	3	266	689	1,239	300	12	2,509	49	439	2,997
Philadelphia	1	1,425	2,126	3,869	384	57	7,862	435	1,852	10,149
<b>Eastern Region</b>	<b>4</b>	<b>1,691</b>	<b>2,815</b>	<b>5,108</b>	<b>684</b>	<b>69</b>	<b>10,371</b>	<b>484</b>	<b>2,291</b>	<b>13,146</b>
Allentown	12	822	1,019	1,517	116	12	3,498	167	584	4,249
Harrisburg	22	908	1,147	1,541	371	11	4,000	200	833	5,033
Scranton	14	285	495	690	134	8	1,626	48	322	1,996
Williamsport	2	116	310	346	110	2	886	18	133	1,037
<b>Central Region</b>	<b>50</b>	<b>2,131</b>	<b>2,971</b>	<b>4,094</b>	<b>731</b>	<b>33</b>	<b>10,010</b>	<b>433</b>	<b>1,872</b>	<b>12,315</b>
Altoona	2	261	431	470	83	1	1,248	21	207	1,476
Mercer	1	251	921	1,356	318	0	2,847	53	355	3,255
Erie	1	328	418	547	154	2	1,450	45	196	1,691
Pittsburgh	53	1,145	1,439	1,063	72	8	3,780	155	806	4,741
<b>Western Region</b>	<b>57</b>	<b>1,985</b>	<b>3,209</b>	<b>3,436</b>	<b>627</b>	<b>11</b>	<b>9,325</b>	<b>274</b>	<b>1,564</b>	<b>11,163</b>
<b>Total</b>	<b>111</b>	<b>5,807</b>	<b>8,995</b>	<b>12,638</b>	<b>2,042</b>	<b>113</b>	<b>29,706</b>	<b>1,191</b>	<b>5,727</b>	<b>36,624</b>
<b>Percent of Total</b>	<b>&lt;1%</b>	<b>16%</b>	<b>25%</b>	<b>35%</b>	<b>6%</b>	<b>&lt;1%</b>	<b>82%</b>	<b>3%</b>	<b>16%</b>	<b>100%</b>

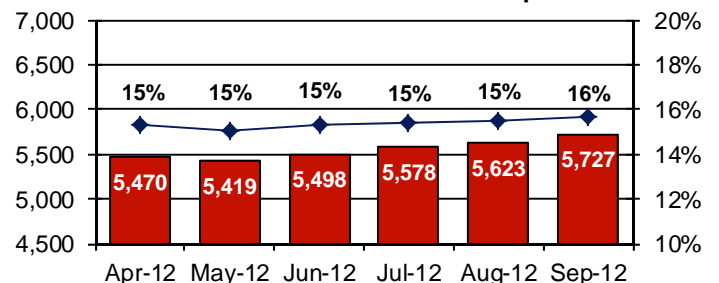
**PBPP Active Cases By Supervision Level**



**Number of Absconders and % of Population**



**Number of Detainees and % of Population**



**Table 5**  
**SUPERVISED POPULATION BY GENDER, RACE and REGION / DISTRICT**  
**September 2012**

Region / District	Male					Female					% Male	Total Population
	White	Black	Hispanic	Other <sup>1</sup>	Total	White	Black	Hispanic	Other <sup>1</sup>	Total		
Chester	1,247	1,319	126	31	2,723	184	76	8	6	274	91%	2,997
Philadelphia	1,286	6,814	1,230	153	9,483	173	418	68	7	666	93%	10,149
<b>EASTERN REGION</b>	<b>2,533</b>	<b>8,133</b>	<b>1,356</b>	<b>184</b>	<b>12,206</b>	<b>357</b>	<b>494</b>	<b>76</b>	<b>13</b>	<b>940</b>	<b>93%</b>	<b>13,146</b>
Allentown	1,910	886	987	37	3,820	281	81	60	7	429	90%	4,249
Harrisburg	2,240	1,620	561	37	4,458	390	127	48	10	575	89%	5,033
Scranton	1,245	388	109	14	1,756	202	25	11	2	240	88%	1,996
Williamsport	735	95	9	3	842	167	21	6	1	195	81%	1,037
<b>CENTRAL REGION</b>	<b>6,130</b>	<b>2,989</b>	<b>1,666</b>	<b>91</b>	<b>10,876</b>	<b>1,040</b>	<b>254</b>	<b>125</b>	<b>20</b>	<b>1,439</b>	<b>88%</b>	<b>12,315</b>
Altoona	1,062	130	6	11	1,209	253	12	0	2	267	82%	1,476
Mercer	2,155	380	9	9	2,553	624	76	1	1	702	78%	3,255
Erie	1,001	392	50	8	1,451	185	46	5	4	240	86%	1,691
Pittsburgh	2,002	2,142	55	19	4,218	353	161	3	6	523	89%	4,741
<b>WESTERN REGION</b>	<b>6,220</b>	<b>3,044</b>	<b>120</b>	<b>47</b>	<b>9,431</b>	<b>1,415</b>	<b>295</b>	<b>9</b>	<b>13</b>	<b>1,732</b>	<b>84%</b>	<b>11,163</b>
<b>TOTAL</b>	<b>14,883</b>	<b>14,166</b>	<b>3,142</b>	<b>322</b>	<b>32,513</b>	<b>2,812</b>	<b>1,043</b>	<b>210</b>	<b>46</b>	<b>4,111</b>	<b>89%</b>	<b>36,624</b>

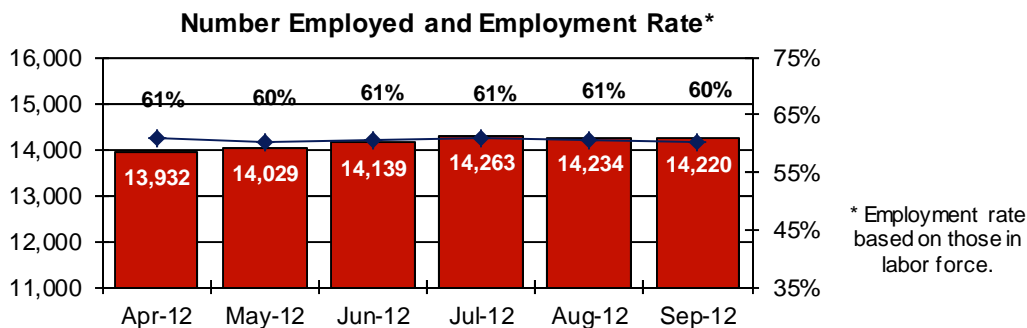
<sup>1</sup> "Other" includes Asian, Pacific Islander, Native American, Native Alaskan, and cases not elsewhere classified.

**Table 6**  
**SUPERVISED POPULATION BY EMPLOYMENT STATUS and REGION / DISTRICT**  
**September 2012**

Region / District	In Labor Force				Not In Labor Force					Total Population
	Employed Part Time	Employed Full Time	Unemployed	Employment Rate	Unable to Work <sup>2</sup>	Student	Unearned Income <sup>3</sup>	Unknown	Non-Reporting	
Chester	160	1,182	773	63%	274	32	87	1	488	2,997
Philadelphia	585	2,467	3,469	47%	722	131	488	0	2,287	10,149
<b>EASTERN REGION</b>	<b>745</b>	<b>3,649</b>	<b>4,242</b>	<b>51%</b>	<b>996</b>	<b>163</b>	<b>575</b>	<b>1</b>	<b>2,775</b>	<b>13,146</b>
Allentown	296	1,564	705	73%	545	66	322	0	751	4,249
Harrisburg	191	1,729	1,605	54%	278	33	163	1	1,033	5,033
Scranton	44	928	342	74%	121	13	177	1	370	1,996
Williamsport	99	477	127	82%	91	13	79	0	151	1,037
<b>CENTRAL REGION</b>	<b>630</b>	<b>4,698</b>	<b>2,779</b>	<b>66%</b>	<b>1,035</b>	<b>125</b>	<b>741</b>	<b>2</b>	<b>2,305</b>	<b>12,315</b>
Altoona	151	481	328	66%	107	18	163	0	228	1,476
Mercer	309	1,002	819	62%	360	41	315	1	408	3,255
Erie	117	566	401	63%	190	18	157	1	241	1,691
Pittsburgh	253	1,619	886	68%	675	51	294	2	961	4,741
<b>WESTERN REGION</b>	<b>830</b>	<b>3,668</b>	<b>2,434</b>	<b>65%</b>	<b>1,332</b>	<b>128</b>	<b>929</b>	<b>4</b>	<b>1,838</b>	<b>11,163</b>
<b>TOTAL</b>	<b>2,205</b>	<b>12,015</b>	<b>9,455</b>	<b>60%</b>	<b>3,363</b>	<b>416</b>	<b>2,245</b>	<b>7</b>	<b>6,918</b>	<b>36,624</b>

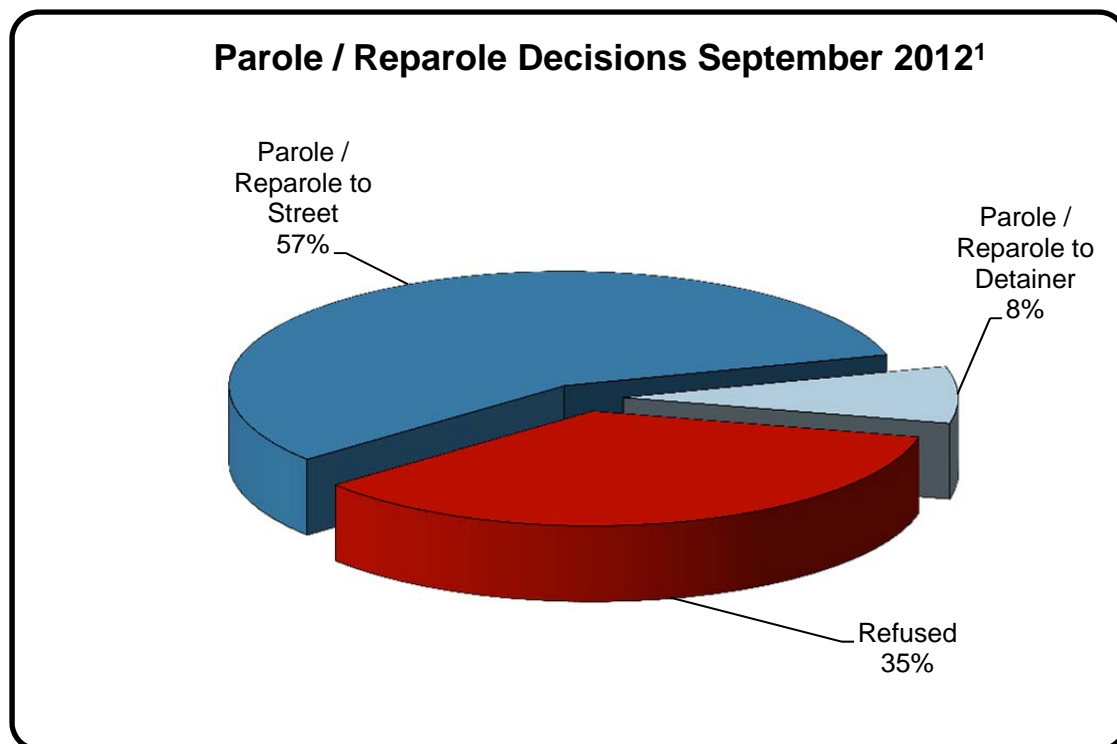
<sup>2</sup> Offender is unable to work due to a physical or mental disability, is a care provider, attends inpatient treatment, etc.

<sup>3</sup> Offender collects income assistance, workman's compensation, monthly pension, Social Security, disability payments, etc.



**Table 7**  
**BOARD DECISIONS**  
**September 2012**

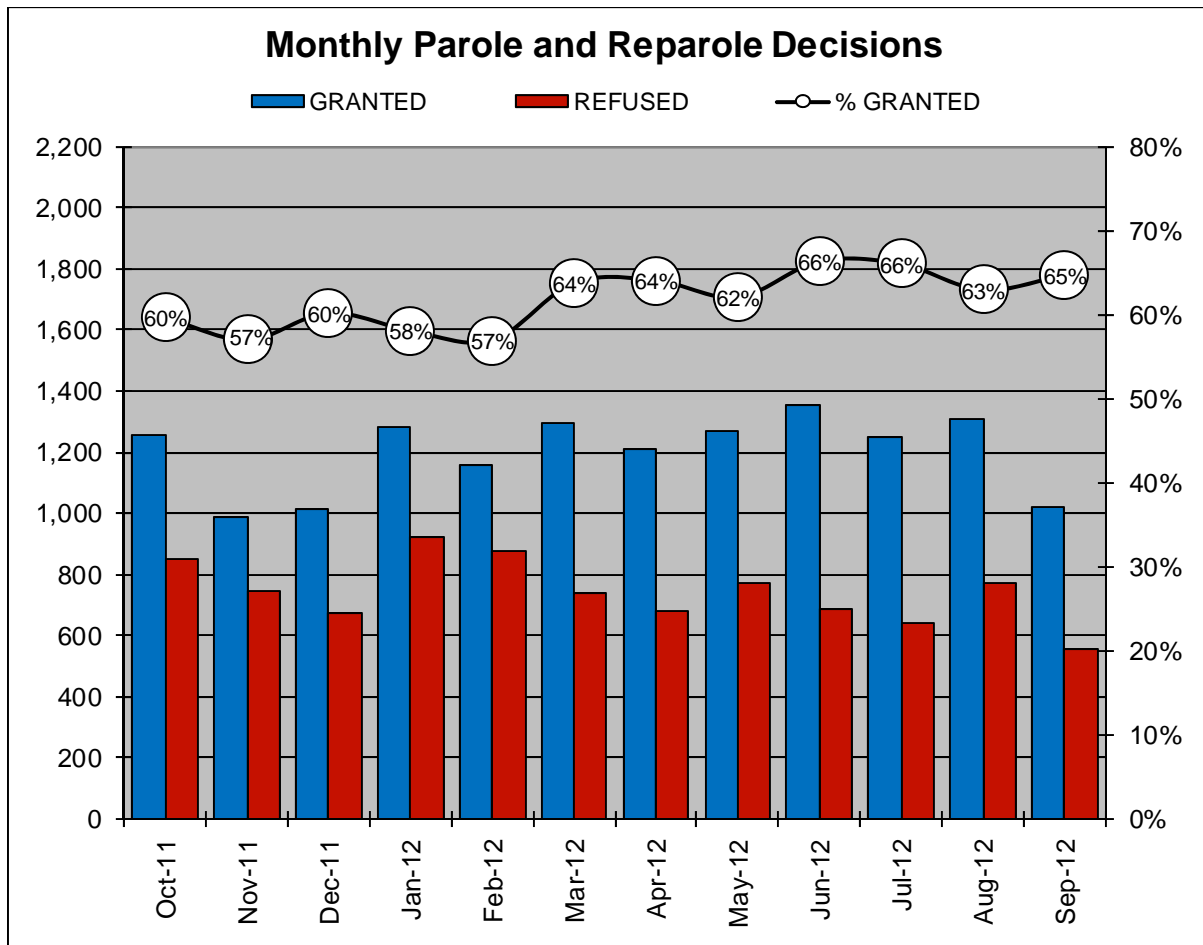
<b>Type of Decision</b>		<b>Total</b>
Parole / Reparole to Street	896	
Parole / Reparole to Detainer	126	
Refused	557	
<b>Total Considered</b>		<b>1,579</b>
<hr/>		
Recommitments as TPV	279	
Recommitments as CPV	124	
Recommitments as CPV and TPV	10	
<b>Total Recommitments</b>		<b>413</b>
Refer to Prior Action		94
Other Decisions		673
<b>Total Decisions</b>		<b>2,759</b>



<sup>1</sup> The 65% does not necessarily reflect the overall grant rate, but rather is the calculated percent of grant decisions for the total number of Board Actions produced during this period of time.

**Table 8**  
**MONTHLY PAROLE and REPAROLE DECISIONS**  
**September 2012**

MONTH-YEAR	GRANTED	REFUSED	CONSIDERED	% GRANTED
Oct-11	1,259	852	2,111	60%
Nov-11	986	744	1,730	57%
Dec-11	1,015	671	1,686	60%
Jan-12	1,282	925	2,207	58%
Feb-12	1,156	874	2,030	57%
Mar-12	1,296	736	2,032	64%
Apr-12	1,212	679	1,891	64%
May-12	1,266	774	2,040	62%
Jun-12	1,353	686	2,039	66%
Jul-12	1,250	643	1,893	66%
Aug-12	1,309	771	2,080	63%
Sep-12	1,022	557	1,579	65%
<b>Monthly Average Over 12 Months</b>	1,201	743	1,943	62%



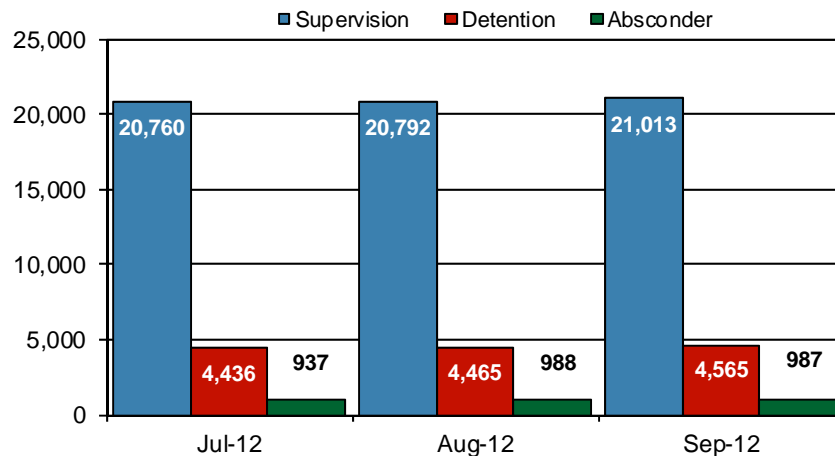


## PBPP Population Breakdown By Place of Incarceration/Jurisdiction – September 2012

Offender Status - September 2012					
Status	State Prison	County Prison	County Sentence	Other States Cases	Total
Supervision	19,622	1,391	5,815	2,878	29,706
Absconder	937	50	204	0	1,191
Detention	4,298	267	1,016	146	5,727
<b>Total</b>	<b>24,857</b>	<b>1,708</b>	<b>7,035</b>	<b>3,024</b>	<b>36,624</b>

PBPP Monthly Population Profile						
Offender Status	Apr-12	May-12	Jun-12	Jul-12	Aug-12	Sep-12
<b>State sentence from state institution</b>	<b>23,970</b>	<b>24,154</b>	<b>24,219</b>	<b>24,457</b>	<b>24,554</b>	<b>24,857</b>
Supervision	19,014	19,209	19,198	19,391	19,411	19,622
Absconder	902	894	888	889	943	937
Detention	4,054	4,051	4,133	4,177	4,200	4,298
<b>State sentence from county prison</b>	<b>1,646</b>	<b>1,661</b>	<b>1,675</b>	<b>1,676</b>	<b>1,691</b>	<b>1,708</b>
Supervision	1,347	1,361	1,367	1,369	1,381	1,391
Absconder	39	40	44	48	45	50
Detention	260	260	264	259	265	267
<b>County sentence Prob &amp; Parole</b>	<b>7,079</b>	<b>7,066</b>	<b>7,058</b>	<b>7,086</b>	<b>7,044</b>	<b>7,035</b>
Supervision	5,896	5,918	5,906	5,900	5,840	5,815
Absconder	180	179	187	182	196	204
Detention	1,003	969	965	1,004	1,008	1,016
<b>Other state's sentence Prob &amp; Parole</b>	<b>3,023</b>	<b>3,037</b>	<b>3,030</b>	<b>3,018</b>	<b>3,022</b>	<b>3,024</b>
Supervision	2,870	2,898	2,893	2,879	2,871	2,878
Absconder	0	0	1	1	1	0
Detention	153	139	136	138	150	146
<b>PBPP Population end of month</b>	<b>35,718</b>	<b>35,918</b>	<b>35,982</b>	<b>36,237</b>	<b>36,311</b>	<b>36,624</b>

### State Sentence Cases by Offender Status



## PBPP Population Breakdown By Place of Incarceration/Jurisdiction – September 2012

Monthly Count of Grant and Refuse Board Actions							
Type of Decision	County Prison			State Prison			All Grant/Refuse Board Actions
	Grant	Refuse	Total	Grant	Refuse	Total	
October 2011	54	24	78	1,205	828	2,033	2,111
November 2011	56	26	82	930	718	1,648	1,730
December 2011	42	12	54	973	659	1,632	1,686
January 2012	45	42	87	1,237	883	2,120	2,207
February 2012	47	15	62	1,109	859	1,968	2,030
March 2012	43	22	65	1,253	714	1,967	2,032
April 2012	43	13	56	1,169	666	1,835	1,891
May 2012	35	20	55	1,231	754	1,985	2,040
June 2012	44	21	65	1,309	665	1,974	2,039
July 2012	37	13	50	1,213	630	1,843	1,893
August 2012	41	14	55	1,268	757	2,025	2,080
September 2012	24	10	34	998	547	1,545	1,579
<b>2012 Total</b>	<b>359</b>	<b>170</b>	<b>529</b>	<b>10,787</b>	<b>6,475</b>	<b>17,262</b>	<b>17,791</b>

Additions and Deletions						
	Apr-12	May-12	Jun-12	Jul-12	Aug-12	Sep-12
<b>Total Additions</b>	<b>1,465</b>	<b>1,528</b>	<b>1,220</b>	<b>1,392</b>	<b>1,489</b>	<b>1,344</b>
State sentence - State Prison	1,008	1,041	842	1,001	1,067	961
State sentence - County Prison	67	79	68	49	73	50
County sentence Prob & Parole	250	238	171	207	198	199
Other state's sentence	140	170	139	135	151	134
<b>Total Deletions</b>	<b>1,315</b>	<b>1,328</b>	<b>1,146</b>	<b>1,132</b>	<b>1,413</b>	<b>1,035</b>
<b>State sentence - State Prison</b>	<b>806</b>	<b>791</b>	<b>687</b>	<b>682</b>	<b>874</b>	<b>592</b>
<i>Technical Violator</i>	293	264	230	235	274	196
<i>Convicted Violator</i>	154	173	138	151	190	123
<i>Successful Completion</i>	323	325	292	266	375	250
<i>Other Case Closure</i>	36	28	27	30	35	23
<b>State sentence - County Prison</b>	<b>56</b>	<b>54</b>	<b>53</b>	<b>46</b>	<b>54</b>	<b>42</b>
<i>Technical Violator</i>	15	10	6	13	14	7
<i>Convicted Violator</i>	6	11	11	10	6	10
<i>Successful Completion</i>	29	31	34	21	32	22
<i>Other Case Closure</i>	6	3	2	2	2	3
<b>County sentence Prob &amp; Parole</b>	<b>306</b>	<b>326</b>	<b>256</b>	<b>256</b>	<b>340</b>	<b>273</b>
<i>Technical Violator</i>	53	45	41	31	46	38
<i>Convicted Violator</i>	25	38	28	17	34	30
<i>Successful Completion</i>	163	159	113	131	172	125
<i>Other Case Closure</i>	65	84	74	77	88	80
<b>Other state's sentence</b>	<b>147</b>	<b>157</b>	<b>150</b>	<b>148</b>	<b>145</b>	<b>128</b>
<i>Technical Violator</i>	1	4	3	1	1	2
<i>Convicted Violator</i>	2	2	1	2	1	0
<i>Successful Completion</i>	61	53	57	65	46	53
<i>Other Case Closure</i>	83	98	89	80	97	73
<b>PBPP Population end of month</b>	<b>35,718</b>	<b>35,918</b>	<b>35,982</b>	<b>36,237</b>	<b>36,311</b>	<b>36,624</b>