

COMMONWEALTH OF PENNSYLVANIA

Board of Probation and Parole

MONTHLY PROGRAM REPORT

August 2012



Tom Corbett
Governor

Michael C. Potteiger
Chairman

C. James Fox
Member

Michael L. Green
Member

Jeffrey R. Imboden
Member

Matthew T. Mangino, Esq
Member

Craig R. McKay
Member

John R. Tuttle
Member

Judith E. Viglione
Member

Lloyd A. White
Member

Carol Lavery
Victim Advocate

PBPP
AN EQUAL OPPORTUNITY EMPLOYER

Published September 20, 2012 by the PBPP Statistical Reporting and Evidence-Based Program Evaluation Office

Copyright © 2012 Commonwealth of Pennsylvania, Board of Probation and Parole. All rights reserved.

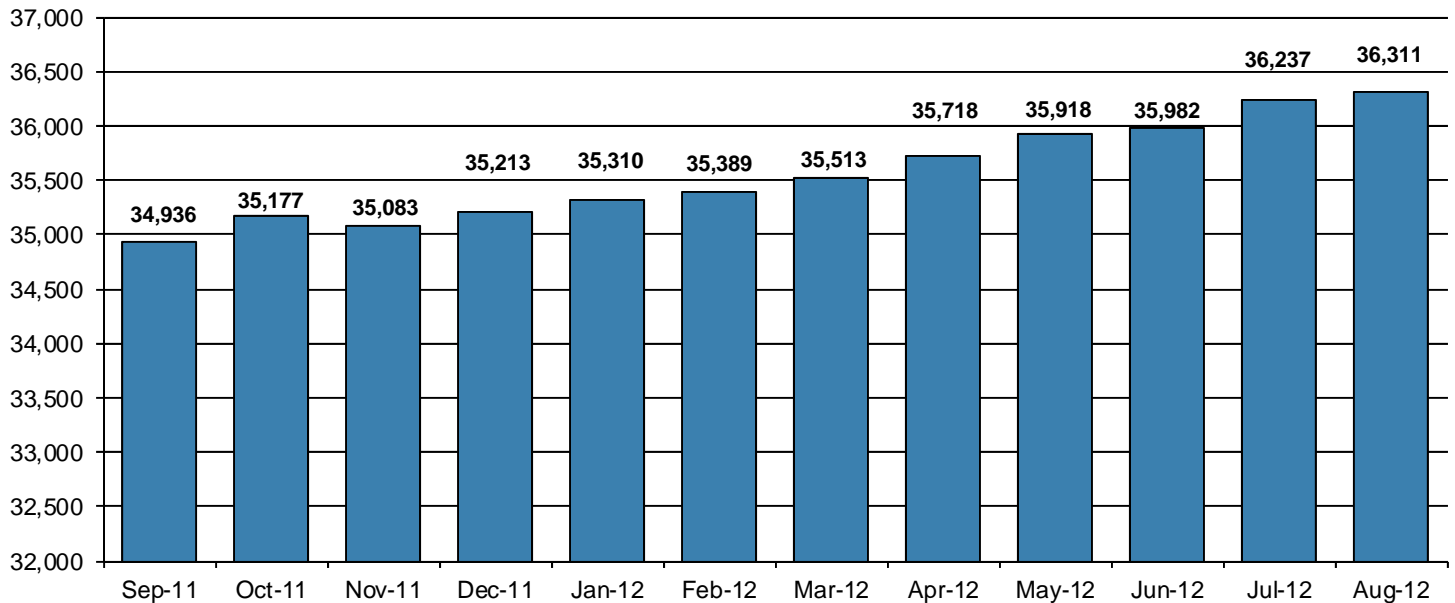
Table 1
WORKLOAD AND POPULATION CHANGES BY REGION / DISTRICT
August 2012

REGION / DISTRICT	Beginning Fiscal Yr ¹ July 2012	Current Month Population	Fiscal YTD Index	Additions	Deletions		Number of Agents ²	Average Workload	Total Workload
					Recommits/ Revocations	Other Deletions			
CHESTER	2,967	2,960	100	80	37	62	37	133	4,918
PHILADELPHIA	9,927	10,027	101	410	139	201	123	130	16,028
EASTERN REGION	12,894	12,987	101	490	176	263	160	131	20,946
ALLENTOWN	4,101	4,202	102	210	65	74	51	144	7,348
HARRISBURG	4,993	5,005	100	203	93	111	62	146	9,041
SCRANTON	1,907	1,944	102	73	28	49	31	119	3,677
WILLIAMSPORT	1,025	1,022	100	43	16	36	13	151	1,957
CENTRAL REGION	12,026	12,173	101	529	202	270	157	140	22,024
ALTOONA	1,453	1,487	102	52	20	29	22	132	2,911
MERCER	3,298	3,288	100	128	42	114	40	145	5,813
ERIE	1,669	1,688	101	79	20	48	25	123	3,082
PITTSBURGH	4,642	4,688	101	211	106	123	68	130	8,826
WESTERN REGION	11,062	11,151	101	470	188	314	155	133	20,632
TOTAL Supervised	35,982	36,311	101	1,489	566	847	472	135	63,603

¹ effective June 30² Filled agent positions

PA Offenders in Other States	3,077	3,104	101	63	7	30
------------------------------	--------------	--------------	------------	-----------	----------	-----------

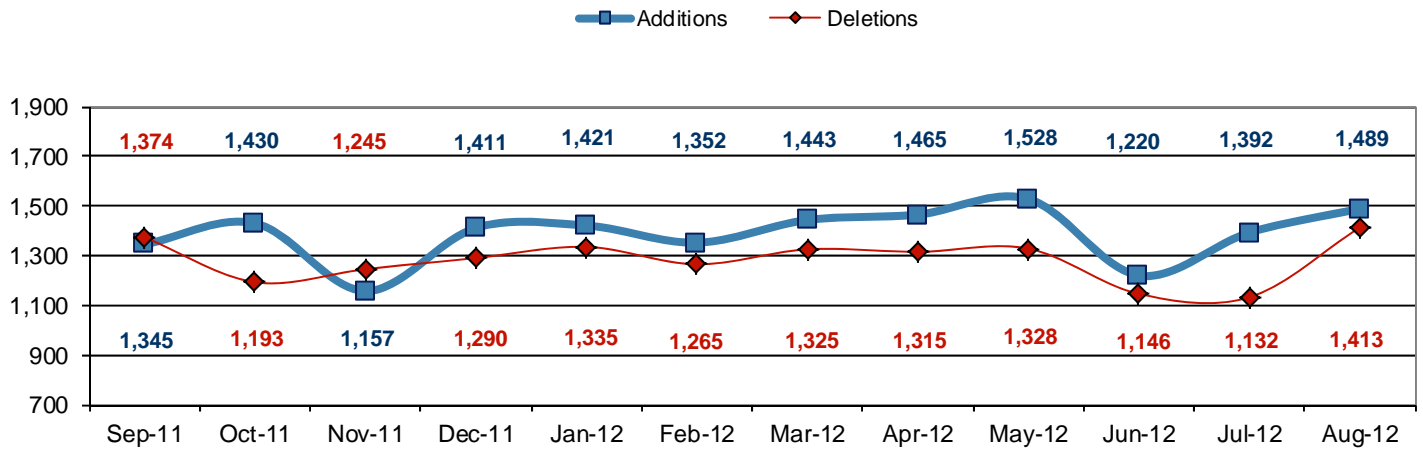
Population - Retrospective Year View



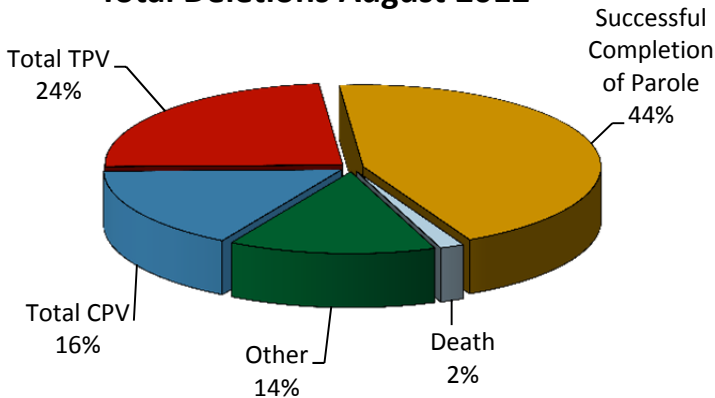
**Table 2
SUPERVISED POPULATION ADDITIONS AND DELETIONS
August 2012**

Population Additions and Deletions	Parole	Reparole	Special County Probation	Special County Parole	Other States' Probation	Other States' Parole	Monthly Total	Fiscal YTD Total
ADDITIONS	912	228	147	51	121	30	1,489	2,881
DELETIONS-RECOMMITMENTS								
<i>Convicted Parole Violator</i>								
State Corrections	156	34	4	-	-	-	194	345
County Corrections	5	1	26	4	-	-	36	63
Other States	-	-	-	-	1	-	1	3
<i>Total Convicted Parole Violator</i>	161	35	30	4	1	0	231	411
<i>Technical Parole Violator</i>								
State Corrections	193	81	5	-	-	-	279	518
County Corrections	14	-	26	15	-	-	55	95
Other States	-	-	-	-	1	-	1	2
<i>Total Technical Parole Violator</i>	207	81	31	15	1	0	335	615
TOTAL RECOMMITMENTS	368	116	61	19	2	0	566	1,026
Deletion Successful Completion	331	76	136	36	37	9	625	1,108
Deletion Death	12	5	4	1	1	0	23	45
Deletion Other	18	2	75	8	77	19	199	366
TOTAL DELETIONS	729	199	276	64	117	28	1,413	2,545

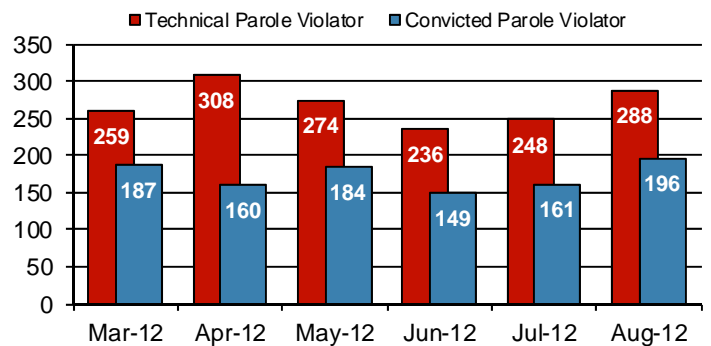
Population Additions & Deletions-Retrospective Year View



Total Deletions August 2012



State Sentence Parole Revocations*

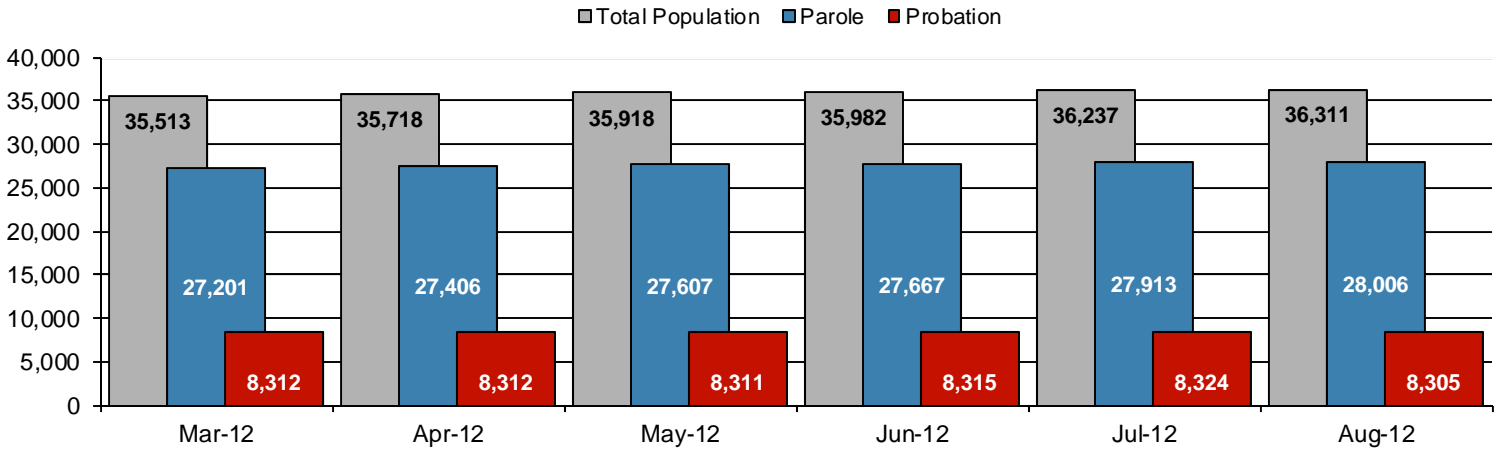


* These revocations represent field case closure records and are dependent on case processing.

Table 3
SUPERVISED POPULATION BY ORIGINATING JURISDICTION and REGION / DISTRICT
August 2012

Region / District	PA Parole State Sentence				County		Other States		Total Population
	State Prisons	Boot Camp	County Prisons	Subtotal	Special Probation	Special Parole	Probation	Parole	
Chester	1,696	43	197	1,936	649	16	311	48	2,960
Philadelphia	7,501	138	346	7,985	1,277	13	596	156	10,027
Eastern Region	9,197	181	543	9,921	1,926	29	907	204	12,987
Allentown	2,794	112	350	3,256	461	4	382	99	4,202
Harrisburg	3,923	196	163	4,282	363	4	291	65	5,005
Scranton	1,229	5	186	1,420	217	1	218	88	1,944
Williamsport	715	15	42	772	123	10	91	26	1,022
Central Region	8,661	328	741	9,730	1,164	19	982	278	12,173
Altoona	923	17	64	1,004	308	65	84	26	1,487
Mercer	746	18	43	807	1,438	918	98	27	3,288
Erie	1,105	42	210	1,357	196	46	70	19	1,688
Pittsburgh	3,143	193	90	3,426	878	57	254	73	4,688
Western Region	5,917	270	407	6,594	2,820	1,086	506	145	11,151
Total	23,775	779	1,691	26,245	5,910	1,134	2,395	627	36,311
Percent of Total	65%	2%	5%	72%	16%	3%	7%	2%	100%

Parole and Probation Supervised Populations



Supervised State Sentence Cases

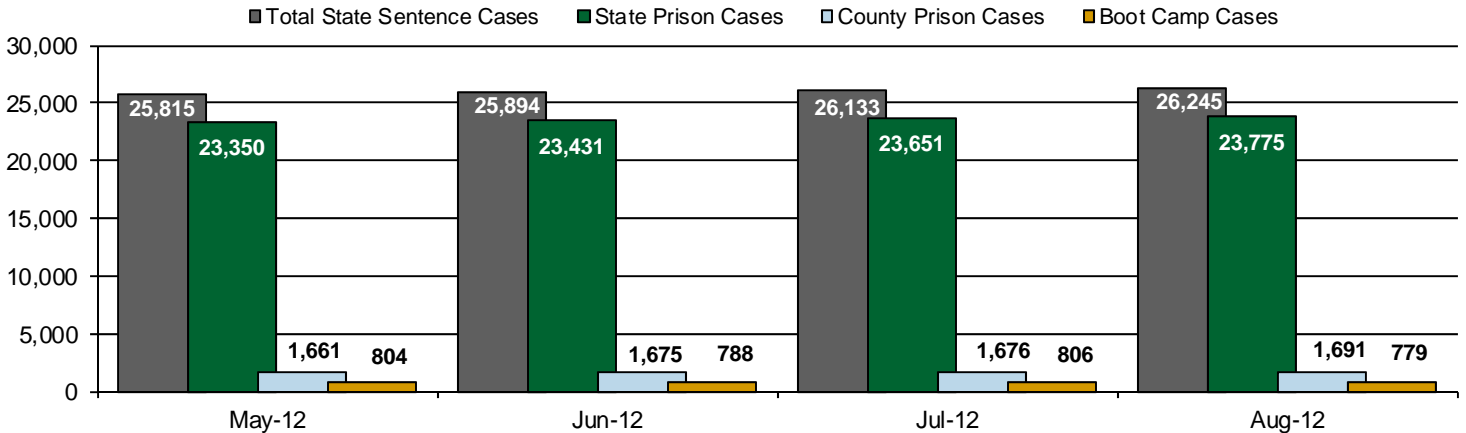
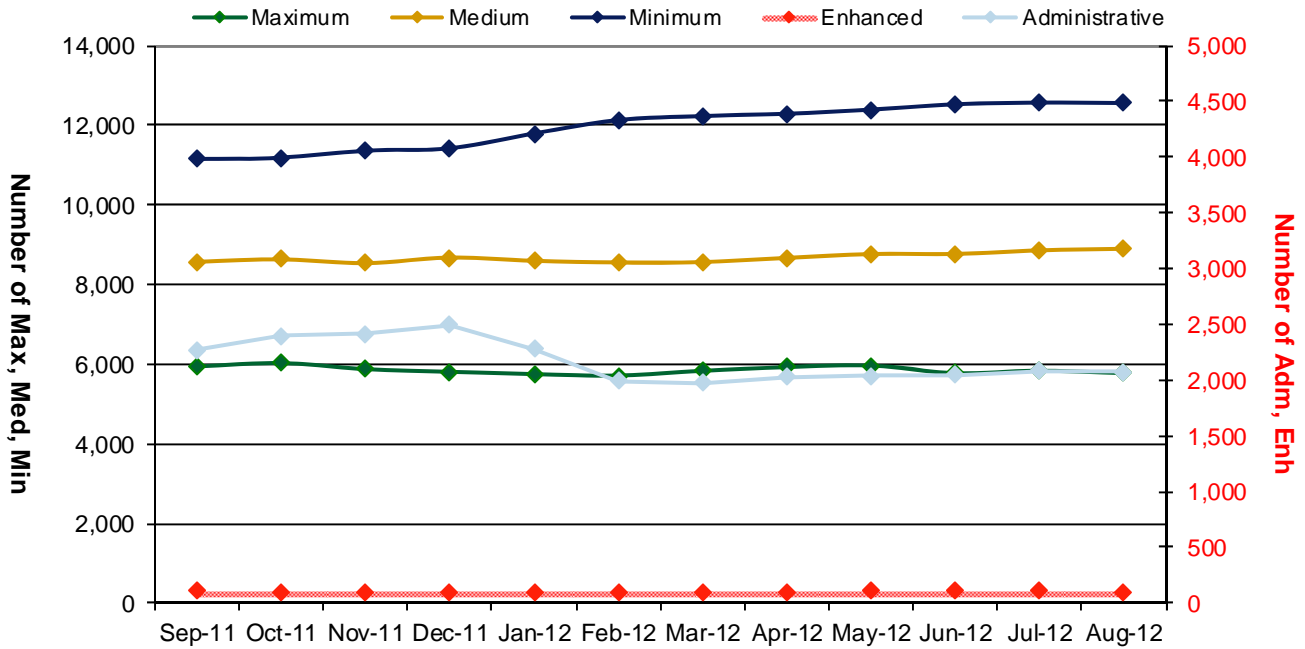


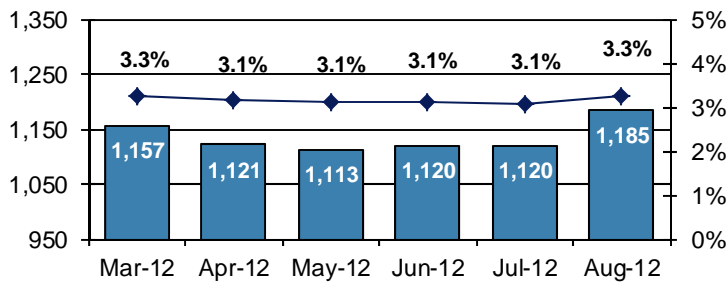
Table 4
SUPERVISED POPULATION BY GRADE OF SUPERVISION and REGION / DISTRICT
August 2012

Region / District	Reporting							Non-Reporting		Total Population
	Enhanced	Maximum	Medium	Minimum	ADM / SPC	Not Classified	Subtotal	Absconder	Detainees	
Chester	2	248	699	1,213	303	14	2,479	48	433	2,960
Philadelphia	3	1,385	2,108	3,833	389	43	7,761	428	1,838	10,027
Eastern Region	5	1,633	2,807	5,046	692	57	10,240	476	2,271	12,987
Allentown	10	786	1,008	1,519	120	18	3,461	169	572	4,202
Harrisburg	19	899	1,133	1,540	376	16	3,983	199	823	5,005
Scranton	11	300	473	680	135	4	1,603	49	292	1,944
Williamsport	2	118	294	347	111	3	875	20	127	1,022
Central Region	42	2,103	2,908	4,086	742	41	9,922	437	1,814	12,173
Altoona	3	268	430	478	82	1	1,262	21	204	1,487
Mercer	3	242	935	1,364	327	3	2,874	55	359	3,288
Erie	2	344	426	539	152	2	1,465	41	182	1,688
Pittsburgh	39	1,184	1,392	1,045	77	3	3,740	155	793	4,688
Western Region	47	2,038	3,183	3,426	638	9	9,341	272	1,538	11,151
Total	94	5,774	8,898	12,558	2,072	107	29,503	1,185	5,623	36,311
Percent of Total	<1%	16%	25%	35%	6%	<1%	82%	3%	15%	100%

PBPP Active Cases By Supervision Level



Number of Absconders and % of Population



Number of Detainees and % of Population

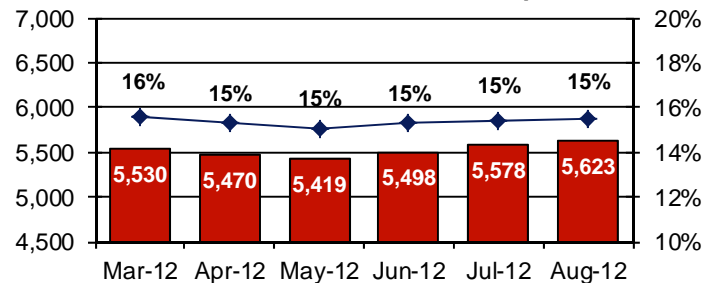


Table 5
SUPERVISED POPULATION BY GENDER, RACE and REGION / DISTRICT
August 2012

Region / District	Male					Female					% Male	Total Population
	White	Black	Hispanic	Other ¹	Total	White	Black	Hispanic	Other ¹	Total		
Chester	1,240	1,294	123	32	2,689	187	72	6	6	271	91%	2,960
Philadelphia	1,270	6,734	1,215	151	9,370	165	416	69	7	657	93%	10,027
EASTERN REGION	2,510	8,028	1,338	183	12,059	352	488	75	13	928	93%	12,987
Allentown	1,914	858	971	37	3,780	278	77	60	7	422	90%	4,202
Harrisburg	2,233	1,596	565	36	4,430	392	127	46	10	575	89%	5,005
Scranton	1,225	368	104	14	1,711	198	23	10	2	233	88%	1,944
Williamsport	725	93	9	3	830	163	22	6	1	192	81%	1,022
CENTRAL REGION	6,097	2,915	1,649	90	10,751	1,031	249	122	20	1,422	88%	12,173
Altoona	1,069	133	7	12	1,221	252	12	0	2	266	82%	1,487
Mercer	2,167	392	6	9	2,574	634	78	1	1	714	78%	3,288
Erie	998	384	53	8	1,443	189	47	5	4	245	85%	1,688
Pittsburgh	1,969	2,119	56	20	4,164	354	160	4	6	524	89%	4,688
WESTERN REGION	6,203	3,028	122	49	9,402	1,429	297	10	13	1,749	84%	11,151
TOTAL	14,810	13,971	3,109	322	32,212	2,812	1,034	207	46	4,099	89%	36,311

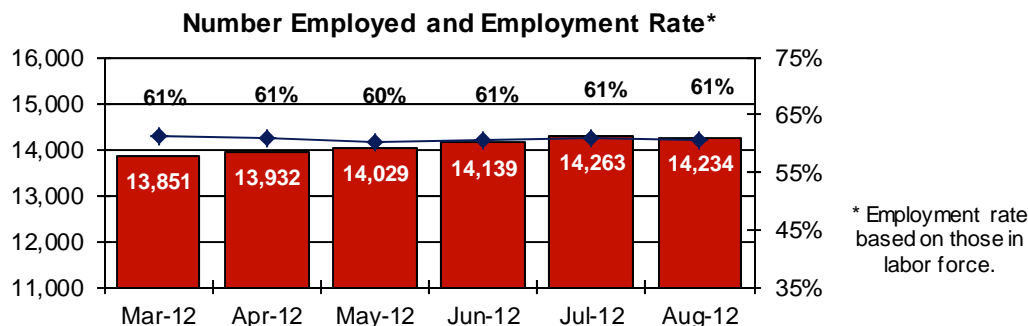
¹ "Other" includes Asian, Pacific Islander, Native American, Native Alaskan, and cases not elsewhere classified.

Table 6
SUPERVISED POPULATION BY EMPLOYMENT STATUS and REGION / DISTRICT
August 2012

Region / District	In Labor Force				Not In Labor Force					Total Population
	Employed Part Time	Employed Full Time	Unemployed	Employment Rate	Unable to Work ²	Student	Unearned Income ³	Unknown	Non-Reporting	
Chester	149	1,194	746	64%	270	31	88	1	481	2,960
Philadelphia	588	2,487	3,346	48%	708	134	498	0	2,266	10,027
EASTERN REGION	737	3,681	4,092	52%	978	165	586	1	2,747	12,987
Allentown	297	1,554	678	73%	537	67	328	0	741	4,202
Harrisburg	193	1,719	1,597	54%	278	33	162	1	1,022	5,005
Scranton	50	931	308	76%	127	13	174	0	341	1,944
Williamsport	97	459	135	80%	89	14	81	0	147	1,022
CENTRAL REGION	637	4,663	2,718	66%	1,031	127	745	1	2,251	12,173
Altoona	161	476	338	65%	101	16	170	0	225	1,487
Mercer	317	1,006	820	62%	377	41	313	0	414	3,288
Erie	123	576	402	63%	188	18	157	1	223	1,688
Pittsburgh	244	1,613	888	68%	645	50	297	3	948	4,688
WESTERN REGION	845	3,671	2,448	65%	1,311	125	937	4	1,810	11,151
TOTAL	2,219	12,015	9,258	61%	3,320	417	2,268	6	6,808	36,311

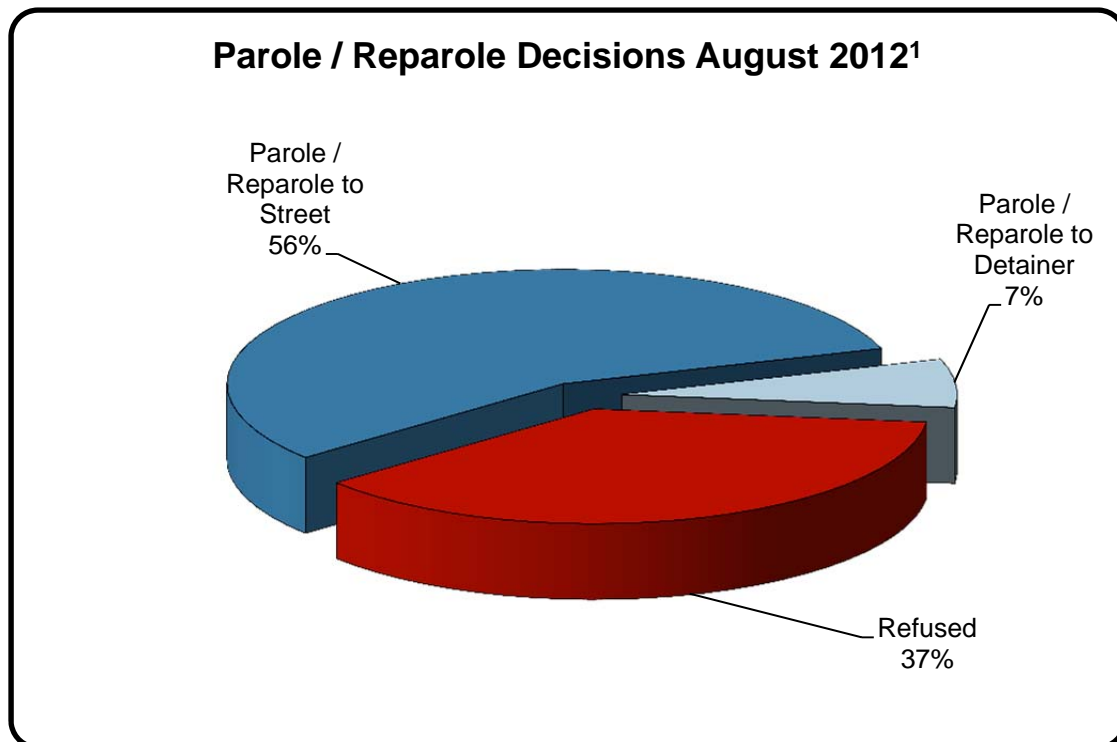
² Offender is unable to work due to a physical or mental disability, is a care provider, attends inpatient treatment, etc.

³ Offender collects income assistance, workman's compensation, monthly pension, Social Security, disability payments, etc.



**Table 7
BOARD DECISIONS
August 2012**

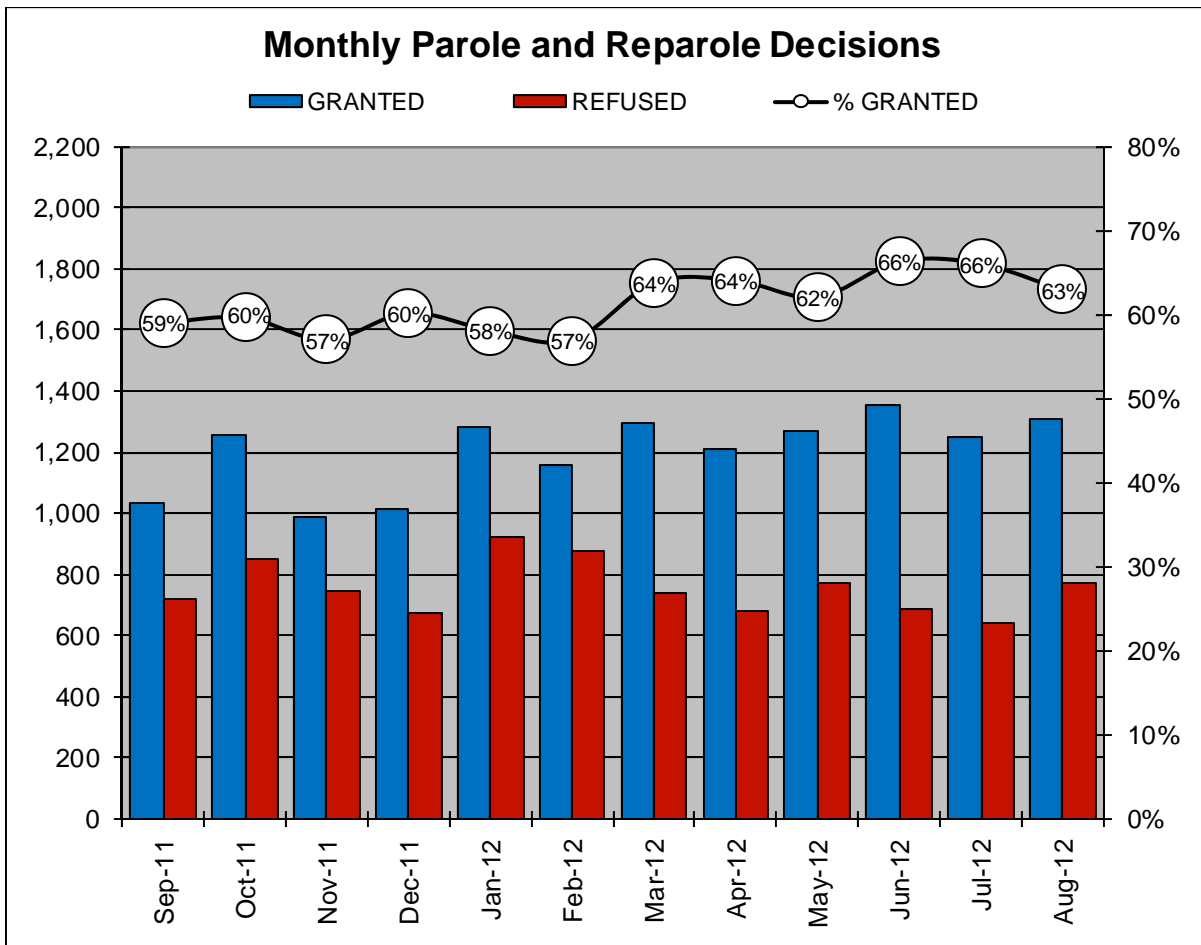
Type of Decision		Total
Parole / Reparole to Street	1,167	
Parole / Reparole to Detainer	142	
Refused	771	
Total Considered		2,080
Recommitments as TPV	391	
Recommitments as CPV	175	
Recommitments as CPV and TPV	39	
Total Recommitments		605
Refer to Prior Action		94
Other Decisions		783
Total Decisions		3,562



¹ The 63% does not necessarily reflect the overall grant rate, but rather is the calculated percent of grant decisions for the total number of Board Actions produced during this period of time.

Table 8
MONTHLY PAROLE and REPAROLE DECISIONS
August 2012

MONTH-YEAR	GRANTED	REFUSED	CONSIDERED	% GRANTED
Sep-11	1,032	716	1,748	59%
Oct-11	1,259	852	2,111	60%
Nov-11	986	744	1,730	57%
Dec-11	1,015	671	1,686	60%
Jan-12	1,282	925	2,207	58%
Feb-12	1,156	874	2,030	57%
Mar-12	1,296	736	2,032	64%
Apr-12	1,212	679	1,891	64%
May-12	1,266	774	2,040	62%
Jun-12	1,353	686	2,039	66%
Jul-12	1,250	643	1,893	66%
Aug-12	1,309	771	2,080	63%
Monthly Average Over 12 Months	1,201	756	1,957	61%

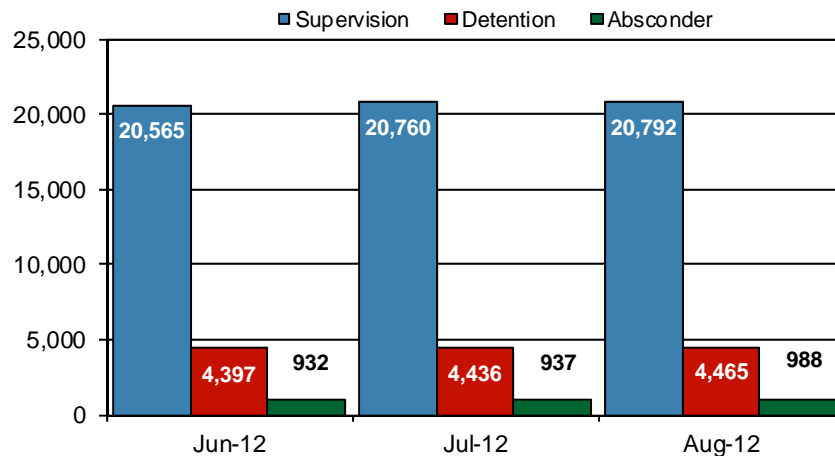


PBPP Population Breakdown By Place of Incarceration/Jurisdiction – August 2012

Offender Status - August 2012					
Status	State Prison	County Prison	County Sentence	Other States Cases	Total
Supervision	19,411	1,381	5,840	2,871	29,503
Absconder	943	45	196	1	1,185
Detention	4,200	265	1,008	150	5,623
Total	24,554	1,691	7,044	3,022	36,311

PBPP Monthly Population Profile						
Offender Status	Mar-12	Apr-12	May-12	Jun-12	Jul-12	Aug-12
State sentence from state institution	23,822	23,970	24,154	24,219	24,457	24,554
<i>Supervision</i>	18,802	19,014	19,209	19,198	19,391	19,411
<i>Absconder</i>	916	902	894	888	889	943
<i>Detention</i>	4,104	4,054	4,051	4,133	4,177	4,200
State sentence from county prison	1,630	1,646	1,661	1,675	1,676	1,691
<i>Supervision</i>	1,330	1,347	1,361	1,367	1,369	1,381
<i>Absconder</i>	33	39	40	44	48	45
<i>Detention</i>	267	260	260	264	259	265
County sentence Prob & Parole	7,039	7,079	7,066	7,058	7,086	7,044
<i>Supervision</i>	5,825	5,896	5,918	5,906	5,900	5,840
<i>Absconder</i>	208	180	179	187	182	196
<i>Detention</i>	1,006	1,003	969	965	1,004	1,008
Other state's sentence Prob & Parole	3,022	3,023	3,037	3,030	3,018	3,022
<i>Supervision</i>	2,869	2,870	2,898	2,893	2,879	2,871
<i>Absconder</i>	0	0	0	1	1	1
<i>Detention</i>	153	153	139	136	138	150
PBPP Population end of month	35,513	35,718	35,918	35,982	36,237	36,311

State Sentence Cases by Offender Status



PBPP Population Breakdown By Place of Incarceration/Jurisdiction – August 2012

Monthly Count of Grant and Refuse Board Actions							
Type of Decision	County Prison			State Prison			All Grant/Refuse Board Actions
	Grant	Refuse	Total	Grant	Refuse	Total	
September 2011	35	20	55	997	696	1,693	1,748
October 2011	54	24	78	1,205	828	2,033	2,111
November 2011	56	26	82	930	718	1,648	1,730
December 2011	42	12	54	973	659	1,632	1,686
January 2012	45	42	87	1,237	883	2,120	2,207
February 2012	47	15	62	1,109	859	1,968	2,030
March 2012	43	22	65	1,253	714	1,967	2,032
April 2012	43	13	56	1,169	666	1,835	1,891
May 2012	35	20	55	1,231	754	1,985	2,040
June 2012	44	21	65	1,309	665	1,974	2,039
July 2012	37	13	50	1,213	630	1,843	1,893
August 2012	41	14	55	1,268	757	2,025	2,080
2012 Total	335	160	495	9,789	5,928	15,717	16,212

Additions and Deletions						
	Mar-12	Apr-12	May-12	Jun-12	Jul-12	Aug-12
Total Additions	1,443	1,465	1,528	1,220	1,392	1,489
State sentence - State Prison	1,006	1,008	1,041	842	1,001	1,067
State sentence - County Prison	60	67	79	68	49	73
County sentence Prob & Parole	248	250	238	171	207	198
Other state's sentence	129	140	170	139	135	151
Total Deletions	1,325	1,315	1,328	1,146	1,132	1,413
State sentence - State Prison	802	806	791	687	682	874
<i>Technical Violator</i>	243	293	264	230	235	274
<i>Convicted Violator</i>	178	154	173	138	151	190
<i>Successful Completion</i>	350	323	325	292	266	375
<i>Other Case Closure</i>	31	36	28	27	30	35
State sentence - County Prison	65	56	54	53	46	54
<i>Technical Violator</i>	16	15	10	6	13	14
<i>Convicted Violator</i>	9	6	11	11	10	6
<i>Successful Completion</i>	35	29	31	34	21	32
<i>Other Case Closure</i>	5	6	3	2	2	2
County sentence Prob & Parole	265	306	326	256	256	340
<i>Technical Violator</i>	42	53	45	41	31	46
<i>Convicted Violator</i>	25	25	38	28	17	34
<i>Successful Completion</i>	123	163	159	113	131	172
<i>Other Case Closure</i>	75	65	84	74	77	88
Other state's sentence	193	147	157	150	148	145
<i>Technical Violator</i>	4	1	4	3	1	1
<i>Convicted Violator</i>	4	2	2	1	2	1
<i>Successful Completion</i>	79	61	53	57	65	46
<i>Other Case Closure</i>	106	83	98	89	80	97
PBPP Population end of month	35,513	35,718	35,918	35,982	36,237	36,311