

COMMONWEALTH OF PENNSYLVANIA

Board of Probation and Parole

MONTHLY PROGRAM REPORT

May 2012



Tom Corbett
Governor

Michael C. Potteiger
Chairman

C. James Fox
Member

Jeffrey R. Imboden
Member

Craig R. McKay
Member

Judith E. Viglione
Member

Michael L. Green
Member

Matthew T. Mangino, Esq
Member

John R. Tuttle
Member

Lloyd A. White
Member

Carol Lavery
Victim Advocate

PBPP
AN EQUAL OPPORTUNITY EMPLOYER

Published June 13, 2012 by the PBPP Statistical Reporting and Evidence-Based Program Evaluation Office

Copyright © 2012 Commonwealth of Pennsylvania, Board of Probation and Parole. All rights reserved.

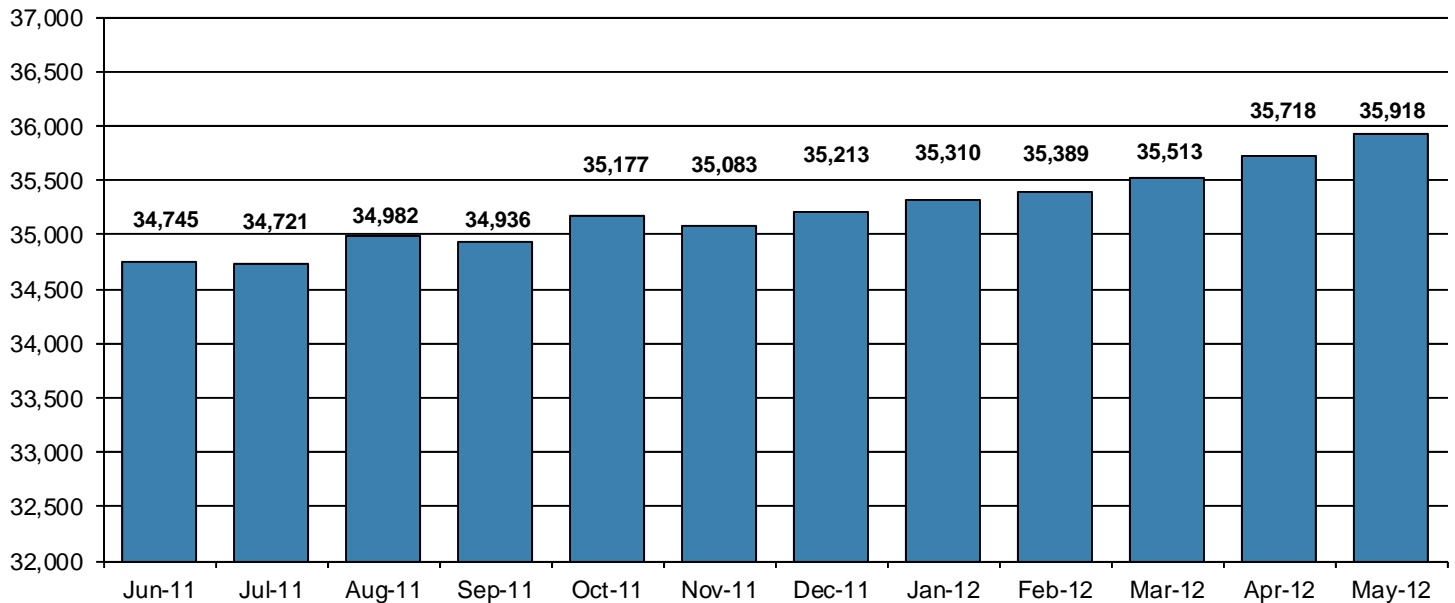
**Table 1
WORKLOAD AND POPULATION CHANGES BY REGION / DISTRICT
May 2012**

REGION / DISTRICT	Beginning Fiscal Yr ¹ July 2011	Current Month Population	Fiscal YTD Index	Additions	Deletions		Number of Agents ²	Average Workload	Total Workload
					Recommits/ Revocations	Other Deletions			
CHESTER	2,782	2,904	104	116	45	62	37	131	4,845
PHILADELPHIA	9,561	9,931	104	401	143	193	127	125	15,929
EASTERN REGION	12,343	12,835	104	517	188	255	164	127	20,774
ALLENTOWN	4,051	4,081	101	198	59	94	53	136	7,230
HARRISBURG	4,687	4,964	106	201	67	91	63	140	8,808
SCRANTON	1,876	1,930	103	106	43	47	31	115	3,570
WILLIAMSPORT	1,000	1,032	103	33	13	16	13	150	1,952
CENTRAL REGION	11,614	12,007	103	538	182	248	160	135	21,560
ALTOONA	1,520	1,453	96	37	41	33	24	120	2,878
MERCER	3,230	3,297	102	148	51	131	43	142	6,112
ERIE	1,544	1,682	109	61	17	21	25	123	3,065
PITTSBURGH	4,494	4,644	103	227	68	93	70	125	8,785
WESTERN REGION	10,788	11,076	103	473	177	278	162	129	20,839
TOTAL Supervised	34,745	35,918	103	1,528	547	781	486	130	63,174

¹ effective June 30² Filled agent positions

PA Offenders in Other States	3,116	3,080	99	73	5	54
------------------------------	--------------	--------------	-----------	-----------	----------	-----------

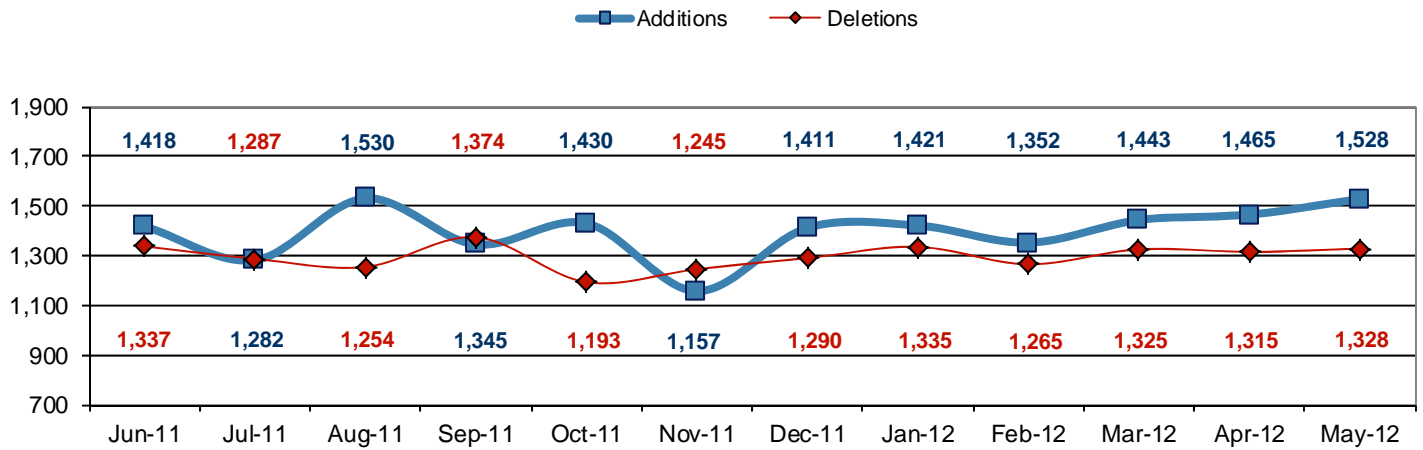
Population - Retrospective Year View



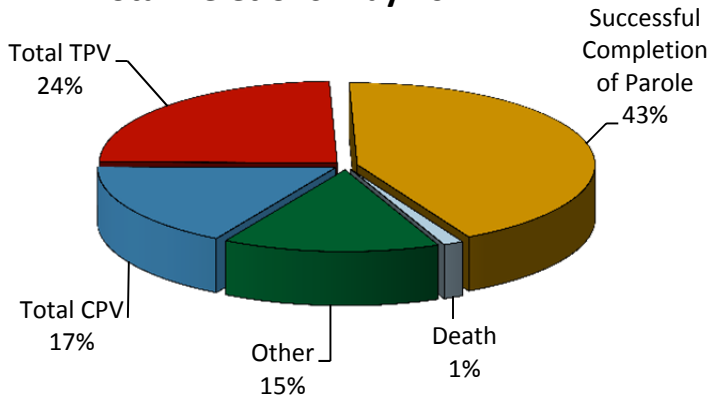
**Table 2
SUPERVISED POPULATION ADDITIONS AND DELETIONS
May 2012**

Population Additions and Deletions	Parole	Reparole	Special County Probation	Special County Parole	Other States' Probation	Other States' Parole	Monthly Total	Fiscal YTD Total
ADDITIONS	892	228	169	69	136	34	1,528	15,364
DELETIONS-RECOMMITMENTS								
<i>Convicted Parole Violator</i>								
State Corrections	127	46	1	0	0	0	174	1,716
County Corrections	11	0	32	5	0	0	48	381
Other States	0	0	0	0	1	1	2	30
<i>Total Convicted Parole Violator</i>	138	46	33	5	1	1	224	2,127
<i>Technical Parole Violator</i>								
State Corrections	202	62	1	0	0	0	265	2,941
County Corrections	8	2	30	14	0	0	54	519
Other States	0	0	0	0	2	2	4	18
<i>Total Technical Parole Violator</i>	210	64	31	14	2	2	323	3,478
TOTAL RECOMMITMENTS	348	110	64	19	3	3	547	5,605
Deletion Successful Completion	295	61	129	31	40	13	569	6,436
Deletion Death	12	3	1	0	2	0	18	244
Deletion Other	12	4	74	10	80	16	196	1,928
TOTAL DELETIONS	667	178	268	60	125	32	1,330	14,213

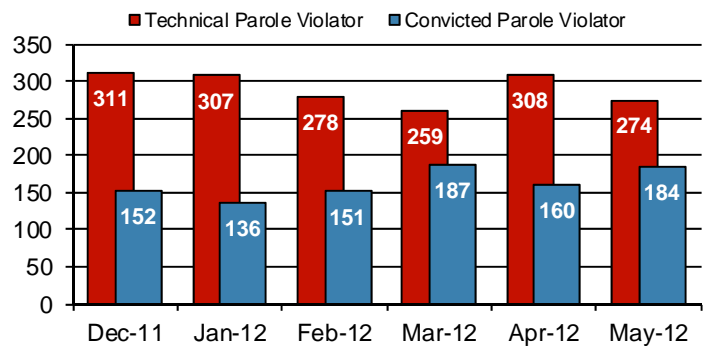
Population Additions & Deletions-Retrospective Year View



Total Deletions May 2012



State Sentence Parole Revocations*

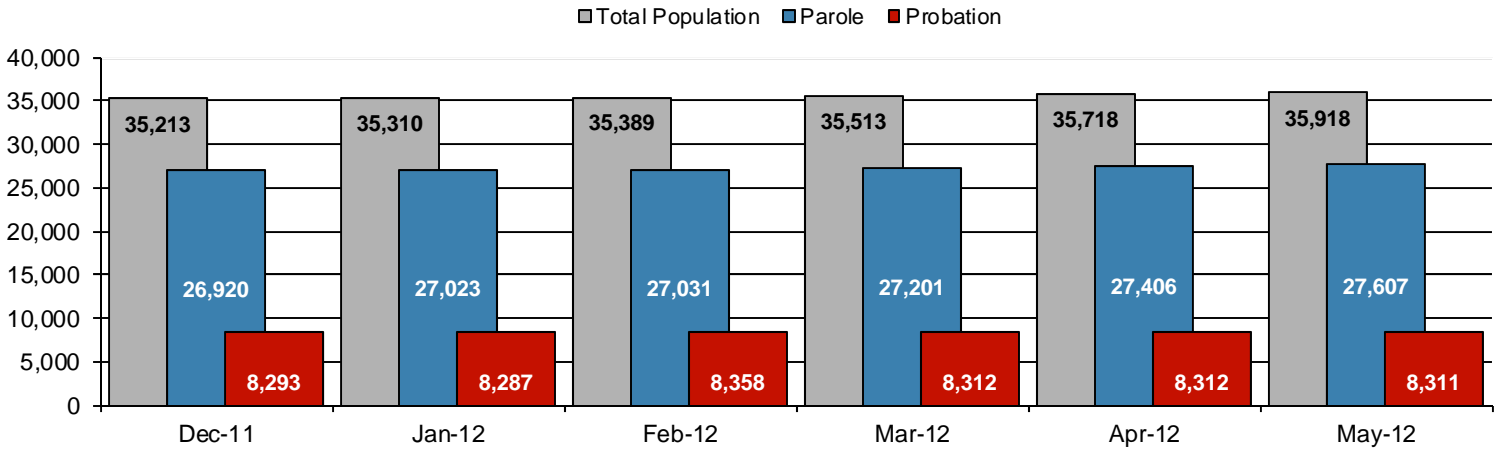


* These revocations represent field case closure records and are dependent on case processing.

Table 3
SUPERVISED POPULATION BY ORIGINATING JURISDICTION and REGION / DISTRICT
May 2012

Region / District	PA Parole State Sentence				County		Other States		Total Population
	State Prisons	Boot Camp	County Prisons	Subtotal	Special Probation	Special Parole	Probation	Parole	
Chester	1,675	43	204	1,922	613	16	305	48	2,904
Philadelphia	7,395	148	349	7,892	1,275	13	600	151	9,931
Eastern Region	9,070	191	553	9,814	1,888	29	905	199	12,835
Allentown	2,703	118	344	3,165	439	3	375	99	4,081
Harrisburg	3,873	191	160	4,224	388	3	282	67	4,964
Scranton	1,206	6	202	1,414	206	1	226	83	1,930
Williamsport	719	15	36	770	126	8	101	27	1,032
Central Region	8,501	330	742	9,573	1,159	15	984	276	12,007
Altoona	885	19	55	959	328	64	77	25	1,453
Mercer	729	20	45	794	1,429	956	95	23	3,297
Erie	1,113	44	179	1,336	196	55	77	18	1,682
Pittsburgh	3,052	200	87	3,339	891	56	282	76	4,644
Western Region	5,779	283	366	6,428	2,844	1,131	531	142	11,076
Total	23,350	804	1,661	25,815	5,891	1,175	2,420	617	35,918
Percent of Total	65%	2%	5%	72%	16%	3%	7%	2%	100%

Parole and Probation Supervised Populations



Supervised State Sentence Cases

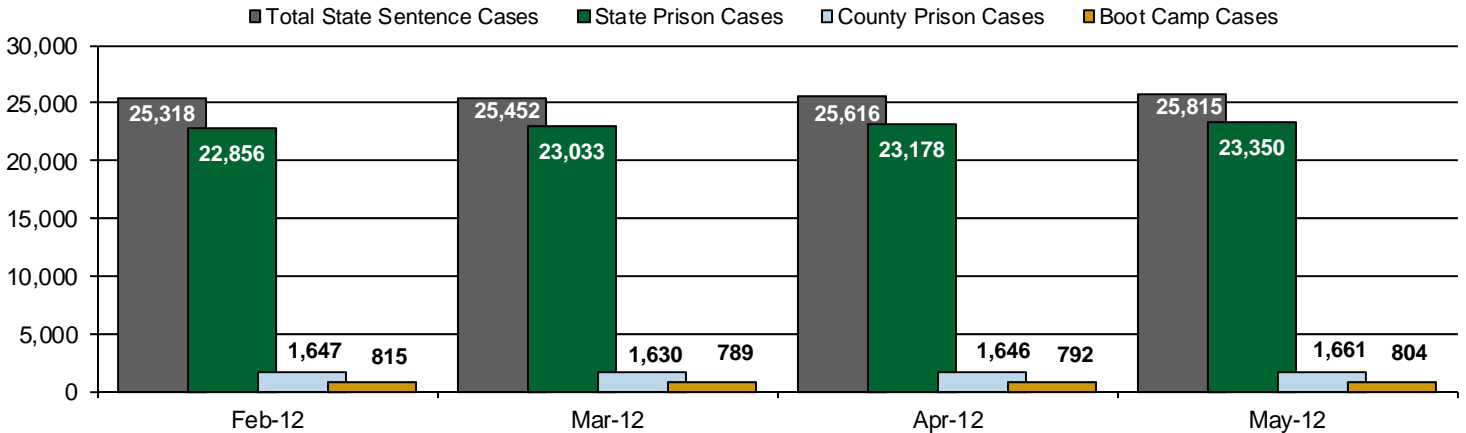
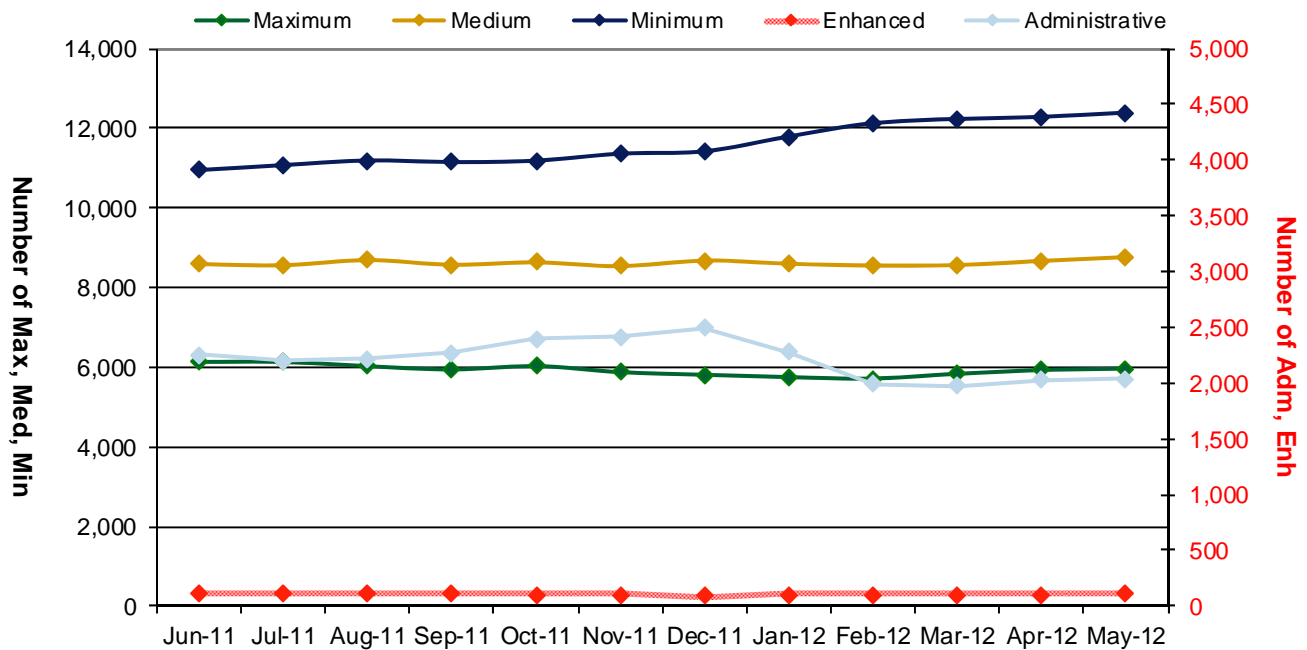


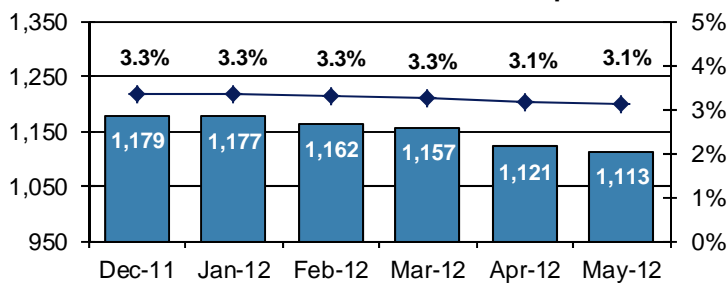
Table 4
SUPERVISED POPULATION BY GRADE OF SUPERVISION and REGION / DISTRICT
May 2012

Region / District	Reporting							Non-Reporting		Total Population
	Enhanced	Maximum	Medium	Minimum	ADM / SPC	Not Classified	Subtotal	Absconder	Detainees	
Chester	5	278	677	1,204	281	8	2,453	51	400	2,904
Philadelphia	4	1,430	2,130	3,745	385	57	7,751	427	1,753	9,931
Eastern Region	9	1,708	2,807	4,949	666	65	10,204	478	2,153	12,835
Allentown	11	816	898	1,445	139	8	3,317	161	603	4,081
Harrisburg	23	928	1,108	1,474	391	27	3,951	168	845	4,964
Scranton	11	313	453	713	131	2	1,623	43	264	1,930
Williamsport	0	105	297	375	116	0	893	13	126	1,032
Central Region	45	2,162	2,756	4,007	777	37	9,784	385	1,838	12,007
Altoona	1	256	447	467	87	2	1,260	22	171	1,453
Mercer	5	256	942	1,425	296	1	2,925	52	320	3,297
Erie	5	334	440	539	135	9	1,462	39	181	1,682
Pittsburgh	42	1,249	1,373	1,004	79	4	3,751	137	756	4,644
Western Region	53	2,095	3,202	3,435	597	16	9,398	250	1,428	11,076
Total	107	5,965	8,765	12,391	2,040	118	29,386	1,113	5,419	35,918
Percent of Total	<1%	17%	24%	34%	6%	<1%	82%	3%	15%	100%

PBPP Active Cases By Supervision Level



Number of Absconders and % of Population



Number of Detainees and % of Population

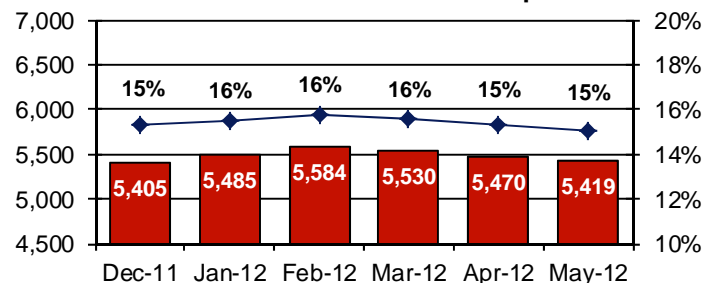


Table 5
SUPERVISED POPULATION BY GENDER, RACE and REGION / DISTRICT
May 2012

Region / District	Male					Female					% Male	Total Population
	White	Black	Hispanic	Other ¹	Total	White	Black	Hispanic	Other ¹	Total		
Chester	1,217	1,269	124	27	2,637	187	69	6	5	267	91%	2,904
Philadelphia	1,255	6,652	1,194	151	9,252	175	421	76	7	679	93%	9,931
EASTERN REGION	2,472	7,921	1,318	178	11,889	362	490	82	12	946	93%	12,835
Allentown	1,880	799	961	34	3,674	266	76	60	5	407	90%	4,081
Harrisburg	2,197	1,592	566	42	4,397	386	128	43	10	567	89%	4,964
Scranton	1,199	371	100	18	1,688	203	26	9	4	242	87%	1,930
Williamsport	734	89	8	3	834	169	21	6	2	198	81%	1,032
CENTRAL REGION	6,010	2,851	1,635	97	10,593	1,024	251	118	21	1,414	88%	12,007
Altoona	1,043	130	7	12	1,192	249	11	0	1	261	82%	1,453
Mercer	2,183	385	6	11	2,585	632	78	1	1	712	78%	3,297
Erie	999	375	52	8	1,434	193	48	4	3	248	85%	1,682
Pittsburgh	1,974	2,083	53	18	4,128	355	151	2	8	516	89%	4,644
WESTERN REGION	6,199	2,973	118	49	9,339	1,429	288	7	13	1,737	84%	11,076
TOTAL	14,681	13,745	3,071	324	31,821	2,815	1,029	207	46	4,097	89%	35,918

¹ "Other" includes Asian, Pacific Islander, Native American, Native Alaskan, and cases not elsewhere classified.

Table 6
SUPERVISED POPULATION BY EMPLOYMENT STATUS and REGION / DISTRICT
May 2012

Region / District	In Labor Force				Not In Labor Force					Total Population
	Employed Part Time	Employed Full Time	Unemployed	Employment Rate	Unable to Work ²	Student	Unearned Income ³	Unknown	Non-Reporting	
Chester	148	1,194	724	65%	269	31	85	2	451	2,904
Philadelphia	515	2,428	3,450	46%	724	124	508	2	2,180	9,931
EASTERN REGION	663	3,622	4,174	51%	993	155	593	4	2,631	12,835
Allentown	276	1,536	574	76%	537	68	326	0	764	4,081
Harrisburg	187	1,670	1,625	53%	269	31	168	1	1,013	4,964
Scranton	55	959	274	79%	143	14	178	0	307	1,930
Williamsport	116	476	115	84%	85	14	87	0	139	1,032
CENTRAL REGION	634	4,641	2,588	67%	1,034	127	759	1	2,223	12,007
Altoona	158	480	324	66%	109	19	170	0	193	1,453
Mercer	313	980	884	59%	395	39	313	1	372	3,297
Erie	127	555	382	64%	200	23	174	1	220	1,682
Pittsburgh	246	1,610	900	67%	644	60	290	1	893	4,644
WESTERN REGION	844	3,625	2,490	64%	1,348	141	947	3	1,678	11,076
TOTAL	2,141	11,888	9,252	60%	3,375	423	2,299	8	6,532	35,918

² Offender is unable to work due to a physical or mental disability, is a care provider, attends inpatient treatment, etc.

³ Offender collects income assistance, workman's compensation, monthly pension, Social Security, disability payments, etc.

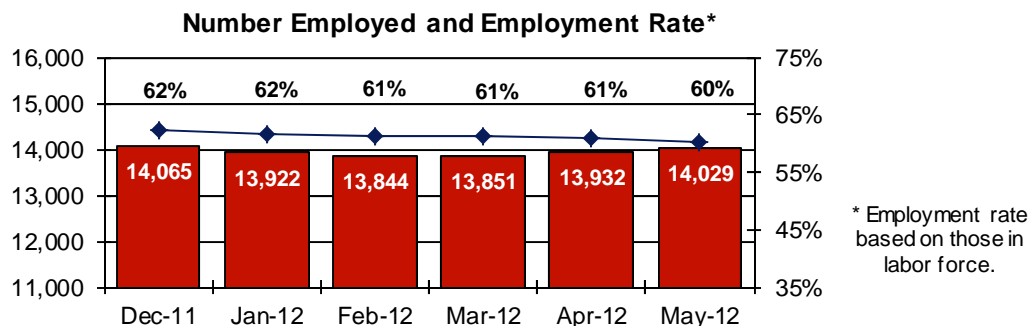
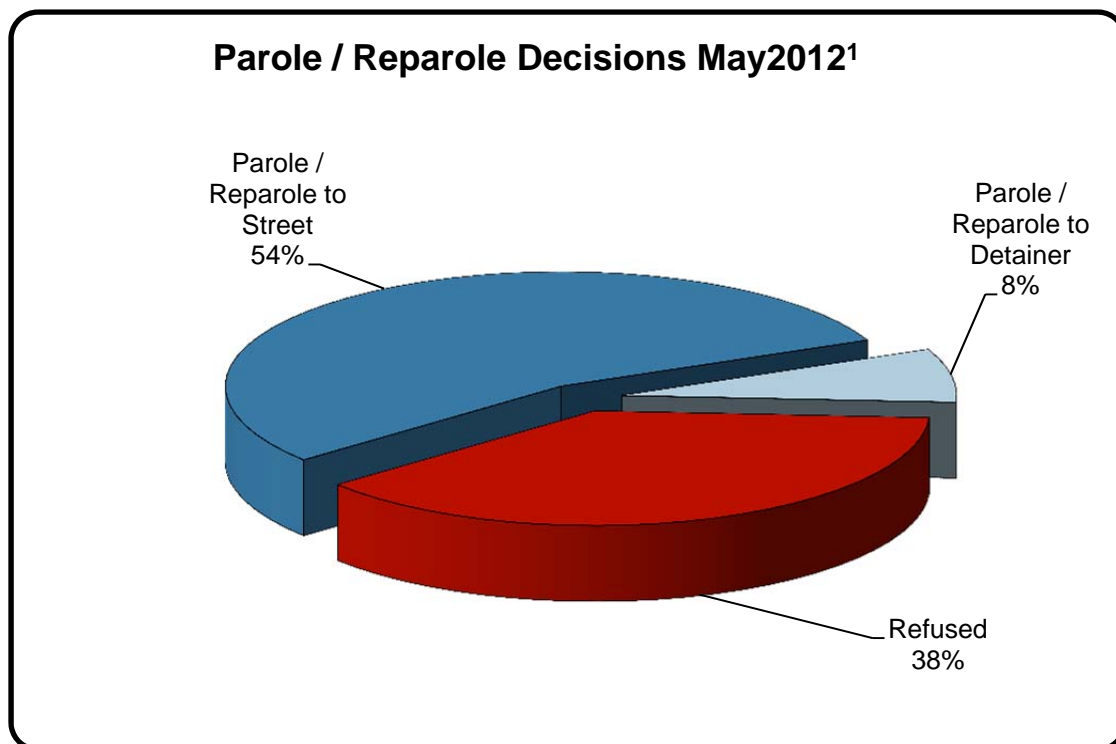


Table 7
BOARD DECISIONS
May 2012

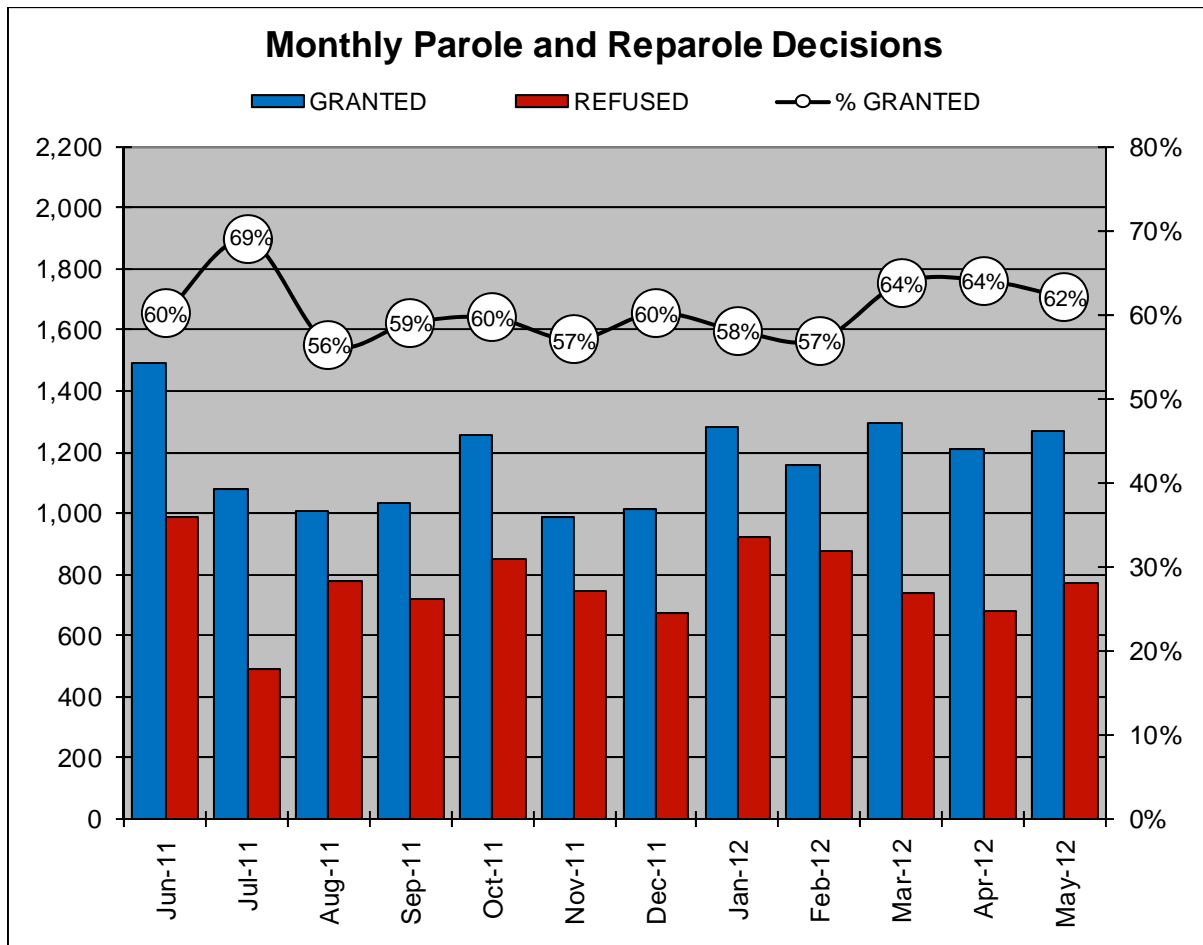
Type of Decision		Total
Parole / Reparole to Street	1,112	
Parole / Reparole to Detainer	154	
Refused	774	
Total Considered		2,040
Recommitments as TPV	354	
Recommitments as CPV	153	
Recommitments as CPV and TPV	21	
Total Recommitments		528
Refer to Prior Action		133
Other Decisions		715
Total Decisions		3,416



¹ The 62% does not necessarily reflect the overall grant rate, but rather is the calculated percent of grant decisions for the total number of Board Actions produced during this period of time.

Table 8
MONTHLY PAROLE and REPAROLE DECISIONS
May 2012

MONTH-YEAR	GRANTED	REFUSED	CONSIDERED	% GRANTED
Jun-11	1,489	985	2,474	60%
Jul-11	1,081	488	1,569	69%
Aug-11	1,008	777	1,785	56%
Sep-11	1,032	716	1,748	59%
Oct-11	1,259	852	2,111	60%
Nov-11	986	744	1,730	57%
Dec-11	1,015	671	1,686	60%
Jan-12	1,282	925	2,207	58%
Feb-12	1,156	874	2,030	57%
Mar-12	1,296	736	2,032	64%
Apr-12	1,212	679	1,891	64%
May-12	1,266	774	2,040	62%
Monthly Average Over 12 Months	1,174	768	1,942	60%

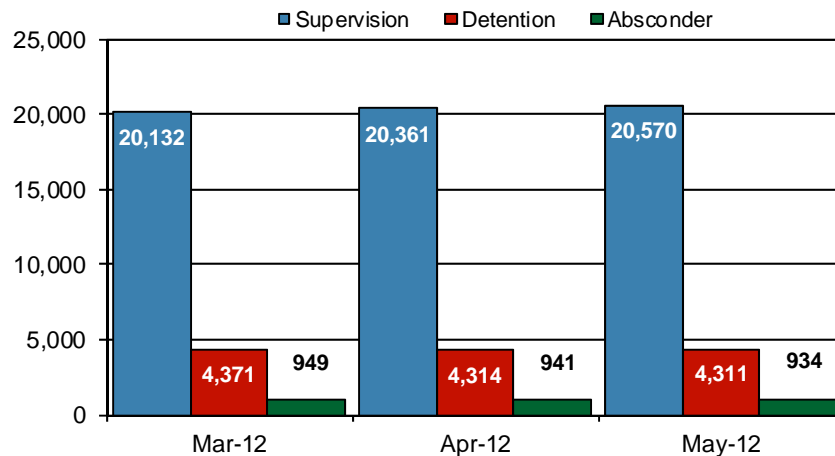


PBPP Population Breakdown By Place of Incarceration/Jurisdiction – May 2012

Offender Status - May 2012					
Status	State Prison	County Prison	County Sentence	Other States Cases	Total
Supervision	19,209	1,361	5,918	2,898	29,386
Absconder	894	40	179	0	1,113
Detention	4,051	260	969	139	5,419
Total	24,154	1,661	7,066	3,037	35,918

PBPP Monthly Population Profile						
Offender Status	Dec-11	Jan-12	Feb-12	Mar-12	Apr-12	May-12
State sentence from state institution	23,567	23,680	23,671	23,822	23,970	24,154
Supervision	18,590	18,633	18,582	18,802	19,014	19,209
Absconder	945	937	936	916	902	894
Detention	4,032	4,110	4,153	4,104	4,054	4,051
State sentence from county prison	1,652	1,642	1,647	1,630	1,646	1,661
Supervision	1,342	1,329	1,339	1,330	1,347	1,361
Absconder	41	40	40	33	39	40
Detention	269	273	268	267	260	260
County sentence Prob & Parole	6,911	6,930	6,983	7,039	7,079	7,066
Supervision	5,765	5,785	5,801	5,825	5,896	5,918
Absconder	193	200	186	208	180	179
Detention	953	945	996	1,006	1,003	969
Other state's sentence Prob & Parole	3,083	3,058	3,088	3,022	3,023	3,037
Supervision	2,932	2,901	2,921	2,869	2,870	2,898
Absconder	0	0	0	0	0	0
Detention	151	157	167	153	153	139
PBPP Population end of month	35,213	35,310	35,389	35,513	35,718	35,918

State Sentence Cases by Offender Status



PBPP Population Breakdown By Place of Incarceration/Jurisdiction – May 2012

Monthly Count of Grant and Refuse Board Actions							
Type of Decision	County Prison			State Prison			All Grant/Refuse Board Actions
	Grant	Refuse	Total	Grant	Refuse	Total	
June 2011	52	24	76	1,437	961	2,398	2,474
July 2011	48	17	65	1,033	471	1,504	1,569
August 2011	51	28	79	957	749	1,706	1,785
September 2011	35	20	55	997	696	1,693	1,748
October 2011	54	24	78	1,205	828	2,033	2,111
November 2011	56	26	82	930	718	1,648	1,730
December 2011	42	12	54	973	659	1,632	1,686
January 2012	45	42	87	1,237	883	2,120	2,207
February 2012	47	15	62	1,109	859	1,968	2,030
March 2012	43	22	65	1,253	714	1,967	2,032
April 2012	43	13	56	1,169	666	1,835	1,891
May 2012	35	20	55	1,231	754	1,985	2,040
2012 Total	213	112	325	5,999	3,876	9,875	10,200

Additions and Deletions						
	Dec-11	Jan-12	Feb-12	Mar-12	Apr-12	May-12
Total Additions	1,411	1,421	1,352	1,443	1,465	1,528
State sentence - State Prison	942	986	869	1,006	1,008	1,041
State sentence - County Prison	71	56	53	60	67	79
County sentence Prob & Parole	255	246	268	248	250	238
Other state's sentence	143	133	162	129	140	170
Total Deletions	1,290	1,335	1,265	1,325	1,315	1,328
State sentence - State Prison	783	812	801	802	806	791
<i>Technical Violator</i>	298	295	269	243	293	264
<i>Convicted Violator</i>	148	131	144	178	154	173
<i>Successful Completion</i>	314	353	352	350	323	325
<i>Other Case Closure</i>	24	33	37	31	36	28
State sentence - County Prison	56	57	56	65	56	54
<i>Technical Violator</i>	13	12	9	16	15	10
<i>Convicted Violator</i>	4	5	7	9	6	11
<i>Successful Completion</i>	34	39	35	35	29	31
<i>Other Case Closure</i>	5	1	5	5	6	3
County sentence Prob & Parole	309	310	272	265	306	326
<i>Technical Violator</i>	32	41	33	42	53	45
<i>Convicted Violator</i>	35	34	25	25	25	38
<i>Successful Completion</i>	152	137	148	123	163	159
<i>Other Case Closure</i>	90	98	66	75	65	84
Other state's sentence	142	156	135	193	147	157
<i>Technical Violator</i>	0	3	2	4	1	4
<i>Convicted Violator</i>	2	2	4	4	2	2
<i>Successful Completion</i>	48	55	62	79	61	53
<i>Other Case Closure</i>	91	96	67	106	83	98
PBPP Population end of month	35,213	35,310	35,389	35,513	35,718	35,918