

COMMONWEALTH OF PENNSYLVANIA

Board of Probation and Parole

MONTHLY PROGRAM REPORT

March 2012



Tom Corbett
Governor

Michael C. Potteiger
Chairman

C. James Fox
Member

Michael L. Green
Member

Jeffrey R. Imboden
Member

Matthew T. Mangino, Esq
Member

Craig R. McKay
Member

John R. Tuttle
Member

Judith E. Viglione
Member

Lloyd A. White
Member

Carol Lavery
Victim Advocate

PBPP
AN EQUAL OPPORTUNITY EMPLOYER

Published April 9, 2012 by the PBPP Statistical Reporting and Evidence-Based Program Evaluation Office

Copyright © 2012 Commonwealth of Pennsylvania, Board of Probation and Parole. All rights reserved.

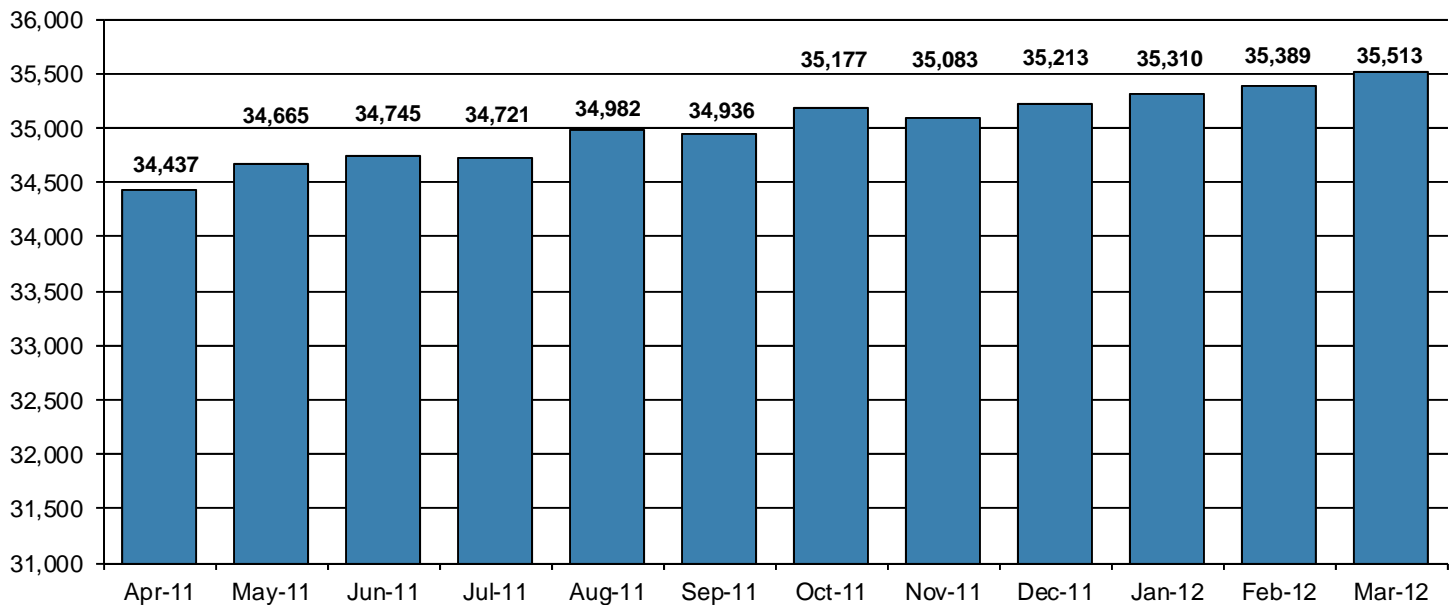
Table 1
WORKLOAD AND POPULATION CHANGES BY REGION / DISTRICT
March 2012

REGION / DISTRICT	Beginning Fiscal Yr ¹ July 2011	Current Month Population	Fiscal YTD Index	Additions	Deletions		Number of Agents ²	Average Workload	Total Workload
					Recommits/ Revocations	Other Deletions			
CHESTER	2,782	2,852	103	84	28	73	34	141	4,779
PHILADELPHIA	9,561	9,855	103	351	118	221	123	126	15,518
EASTERN REGION	12,343	12,707	103	435	146	294	157	129	20,297
ALLENTOWN	4,051	4,069	100	206	71	89	50	144	7,175
HARRISBURG	4,687	4,800	102	183	91	80	64	132	8,466
SCRANTON	1,876	1,898	101	101	40	58	31	114	3,521
WILLIAMSPORT	1,000	1,029	103	38	10	20	15	130	1,948
CENTRAL REGION	11,614	11,796	102	528	212	247	160	132	21,110
ALTOONA	1,520	1,498	99	42	41	33	23	127	2,913
MERCER	3,230	3,239	100	131	35	77	42	144	6,065
ERIE	1,544	1,681	109	81	27	39	24	128	3,065
PITTSBURGH	4,494	4,592	102	226	60	114	70	124	8,710
WESTERN REGION	10,788	11,010	102	480	163	263	159	131	20,754
TOTAL Supervised	34,745	35,513	102	1,443	521	804	476	131	62,160

¹ effective June 30² Filled agent positions

PA Offenders in Other States	3,116	3,106	100	85	11	78
------------------------------	--------------	--------------	------------	-----------	-----------	-----------

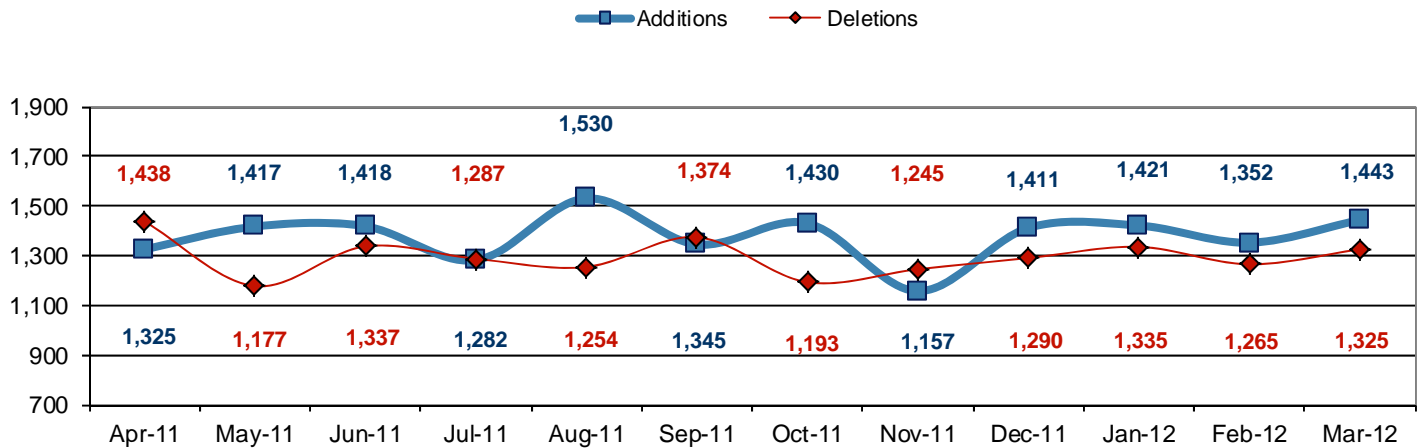
Population - Retrospective Year View



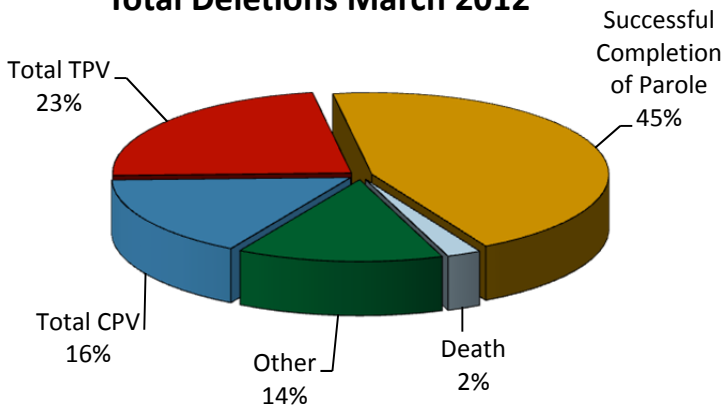
**Table 2
SUPERVISED POPULATION ADDITIONS AND DELETIONS
March 2012**

Population Additions and Deletions	Parole	Reparole	Special County Probation	Special County Parole	Other States' Probation	Other States' Parole	Monthly Total	Fiscal YTD Total
ADDITIONS	842	224	176	72	111	18	1,443	12,371
DELETIONS-RECOMMITMENTS								
<i>Convicted Parole Violator</i>								
State Corrections	140	38	3	0	0	0	181	1,384
County Corrections	8	1	18	4	0	0	31	306
Other States	0	0	0	0	4	0	4	26
<i>Total Convicted Parole Violator</i>	148	39	21	4	4	0	216	1,716
<i>Technical Parole Violator</i>								
State Corrections	175	68	3	0	0	0	246	2,376
County Corrections	12	4	34	5	0	0	55	404
Other States	0	0	0	0	2	2	4	13
<i>Total Technical Parole Violator</i>	187	72	37	5	2	2	305	2,793
TOTAL RECOMMITMENTS	335	111	58	9	6	2	521	4,509
Deletion Successful Completion	313	72	105	18	66	13	587	5,291
Deletion Death	17	4	5	2	2	1	31	198
Deletion Other	13	2	62	6	93	10	186	1,570
TOTAL DELETIONS	678	189	230	35	167	26	1,325	11,568

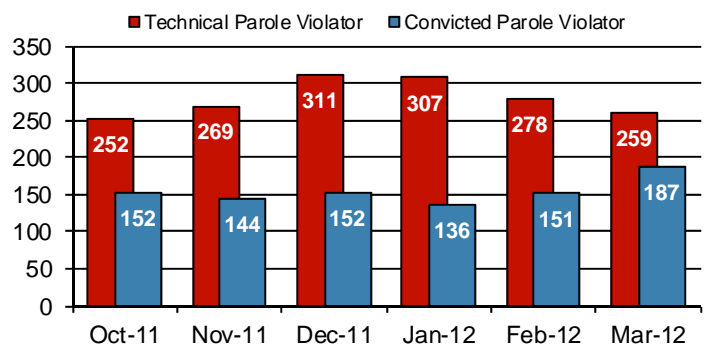
Population Additions & Deletions-Retrospective Year View



Total Deletions March 2012



State Sentence Parole Revocations*

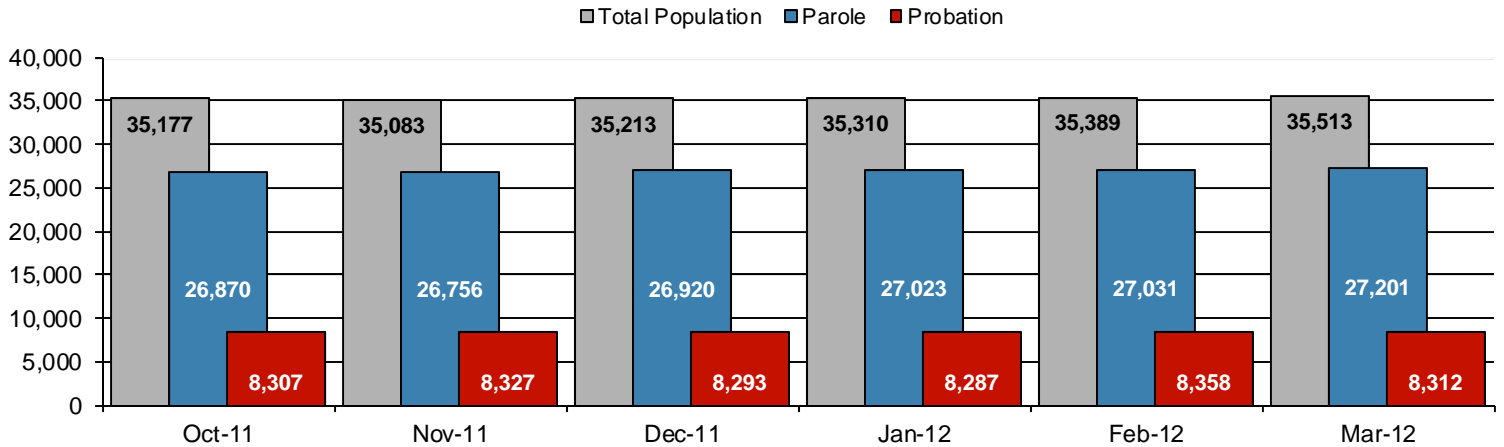


* These revocations represent field case closure records and are dependent on case processing.

**Table 3
SUPERVISED POPULATION BY ORIGINATING JURISDICTION and REGION / DISTRICT
March 2012**

Region / District	PA Parole State Sentence				County		Other States		Total Population
	State Prisons	Boot Camp	County Prisons	Subtotal	Special Probation	Special Parole	Probation	Parole	
Chester	1,626	44	206	1,876	607	15	307	47	2,852
Philadelphia	7,344	145	345	7,834	1,282	12	582	145	9,855
Eastern Region	8,970	189	551	9,710	1,889	27	889	192	12,707
Allentown	2,667	130	341	3,138	446	5	384	96	4,069
Harrisburg	3,728	188	148	4,064	386	4	284	62	4,800
Scranton	1,176	6	208	1,390	201	2	228	77	1,898
Williamsport	720	16	34	770	127	6	101	25	1,029
Central Region	8,291	340	731	9,362	1,160	17	997	260	11,796
Altoona	898	19	59	976	338	74	82	28	1,498
Mercer	723	20	40	783	1,421	913	96	26	3,239
Erie	1,114	40	171	1,325	199	57	82	18	1,681
Pittsburgh	3,037	181	78	3,296	882	62	277	75	4,592
Western Region	5,772	260	348	6,380	2,840	1,106	537	147	11,010
Total	23,033	789	1,630	25,452	5,889	1,150	2,423	599	35,513
Percent of Total	64%	2%	5%	71%	17%	3%	7%	2%	100%

Parole and Probation Supervised Populations



Supervised State Sentence Cases

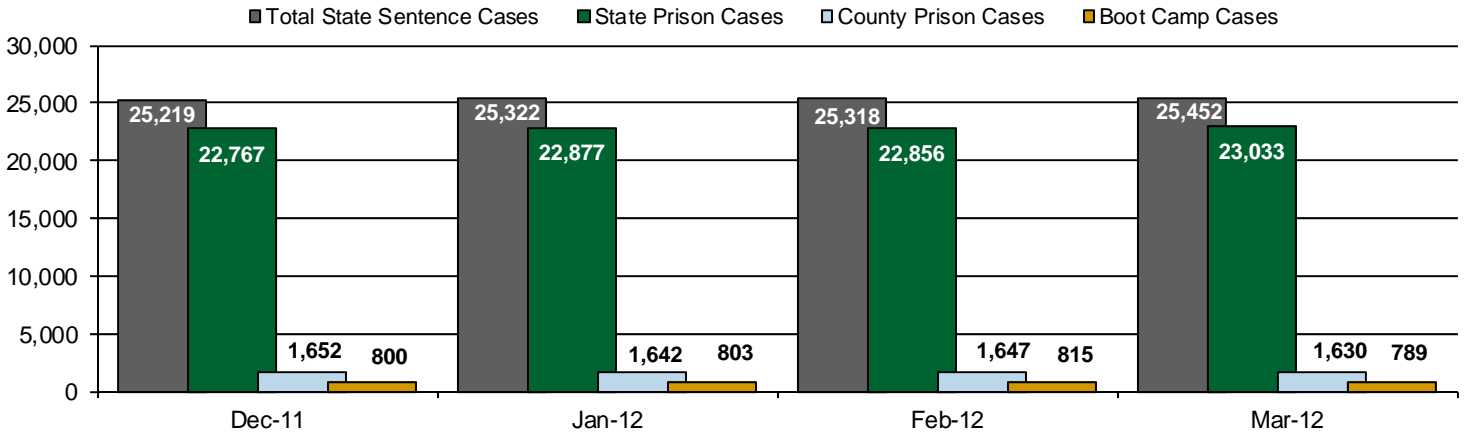
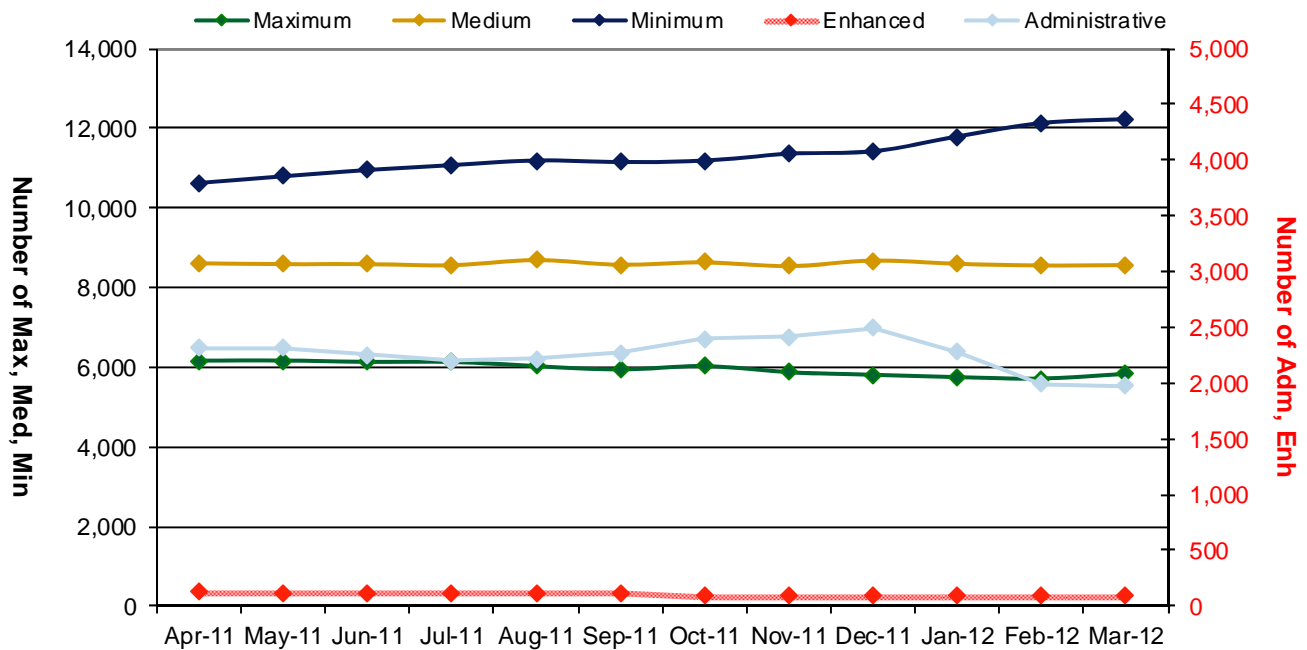


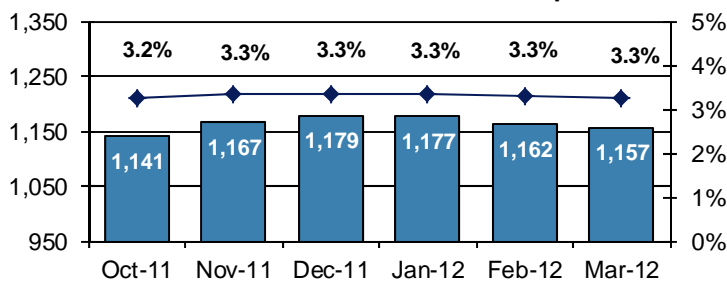
Table 4
SUPERVISED POPULATION BY GRADE OF SUPERVISION and REGION / DISTRICT
March 2012

Region / District	Reporting							Non-Reporting		Total Population
	Enhanced	Maximum	Medium	Minimum	ADM / SPC	Not Classified	Subtotal	Absconder	Detainees	
Chester	2	277	655	1,166	287	6	2,393	60	399	2,852
Philadelphia	5	1,368	2,090	3,649	397	65	7,574	454	1,827	9,855
Eastern Region	7	1,645	2,745	4,815	684	71	9,967	514	2,226	12,707
Allentown	17	834	883	1,400	146	21	3,301	159	609	4,069
Harrisburg	19	834	1,076	1,460	409	14	3,812	170	818	4,800
Scranton	12	287	430	725	127	6	1,587	38	273	1,898
Williamsport	1	107	298	380	116	3	905	14	110	1,029
Central Region	49	2,062	2,687	3,965	798	44	9,605	381	1,810	11,796
Altoona	1	273	451	469	86	1	1,281	18	199	1,498
Mercer	6	250	907	1,448	204	1	2,816	67	356	3,239
Erie	6	346	450	532	126	2	1,462	32	187	1,681
Pittsburgh	31	1,257	1,323	1,000	81	3	3,695	145	752	4,592
Western Region	44	2,126	3,131	3,449	497	7	9,254	262	1,494	11,010
Total	100	5,833	8,563	12,229	1,979	122	28,826	1,157	5,530	35,513
Percent of Total	<1%	16%	24%	34%	6%	<1%	81%	3%	16%	100%

PBPP Active Cases By Supervision Level



Number of Absconders and % of Population



Number of Detainees and % of Population

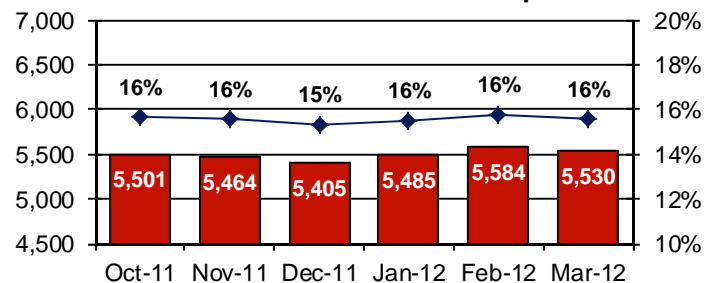


Table 5
SUPERVISED POPULATION BY GENDER, RACE and REGION / DISTRICT
March 2012

Region / District	Male					Female					% Male	Total Population
	White	Black	Hispanic	Other ¹	Total	White	Black	Hispanic	Other ¹	Total		
Chester	1,184	1,253	116	28	2,581	191	69	6	5	271	90%	2,852
Philadelphia	1,256	6,583	1,192	152	9,183	178	408	80	6	672	93%	9,855
EASTERN REGION	2,440	7,836	1,308	180	11,764	369	477	86	11	943	93%	12,707
Allentown	1,883	801	949	37	3,670	251	82	59	7	399	90%	4,069
Harrisburg	2,130	1,533	531	40	4,234	378	135	44	9	566	88%	4,800
Scranton	1,196	343	97	19	1,655	204	26	9	4	243	87%	1,898
Williamsport	726	92	7	4	829	173	20	5	2	200	81%	1,029
CENTRAL REGION	5,935	2,769	1,584	100	10,388	1,006	263	117	22	1,408	88%	11,796
Altoona	1,070	133	6	13	1,222	262	12	0	2	276	82%	1,498
Mercer	2,143	380	6	12	2,541	617	79	1	1	698	78%	3,239
Erie	1,005	371	51	9	1,436	188	49	4	4	245	85%	1,681
Pittsburgh	1,937	2,067	47	19	4,070	364	149	3	6	522	89%	4,592
WESTERN REGION	6,155	2,951	110	53	9,269	1,431	289	8	13	1,741	84%	11,010
TOTAL	14,530	13,556	3,002	333	31,421	2,806	1,029	211	46	4,092	88%	35,513

¹ "Other" includes Asian, Pacific Islander, Native American, Native Alaskan, and cases not elsewhere classified.

Table 6
SUPERVISED POPULATION BY EMPLOYMENT STATUS and REGION / DISTRICT
March 2012

Region / District	In Labor Force				Not In Labor Force					Total Population
	Employed Part Time	Employed Full Time	Unemployed	Employment Rate	Unable to Work ²	Student	Unearned Income ³	Unknown	Non-Reporting	
Chester	144	1,191	688	66%	261	25	82	2	459	2,852
Philadelphia	508	2,405	3,249	47%	739	146	527	0	2,281	9,855
EASTERN REGION	652	3,596	3,937	52%	1,000	171	609	2	2,740	12,707
Allentown	260	1,540	592	75%	534	70	305	0	768	4,069
Harrisburg	189	1,668	1,478	56%	263	37	176	1	988	4,800
Scranton	53	930	286	77%	132	12	174	0	311	1,898
Williamsport	113	473	125	82%	86	15	93	0	124	1,029
CENTRAL REGION	615	4,611	2,481	68%	1,015	134	748	1	2,191	11,796
Altoona	164	508	293	70%	110	20	186	0	217	1,498
Mercer	303	921	881	58%	373	33	304	1	423	3,239
Erie	138	538	362	65%	215	25	184	0	219	1,681
Pittsburgh	247	1,558	853	68%	692	61	284	0	897	4,592
WESTERN REGION	852	3,525	2,389	65%	1,390	139	958	1	1,756	11,010
TOTAL	2,119	11,732	8,807	61%	3,405	444	2,315	4	6,687	35,513

² Offender is unable to work due to a physical or mental disability, is a care provider, attends inpatient treatment, etc.

³ Offender collects income assistance, workman's compensation, monthly pension, Social Security, disability payments, etc.

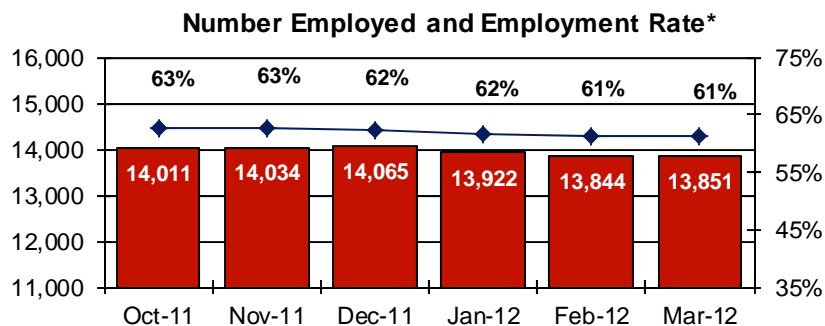
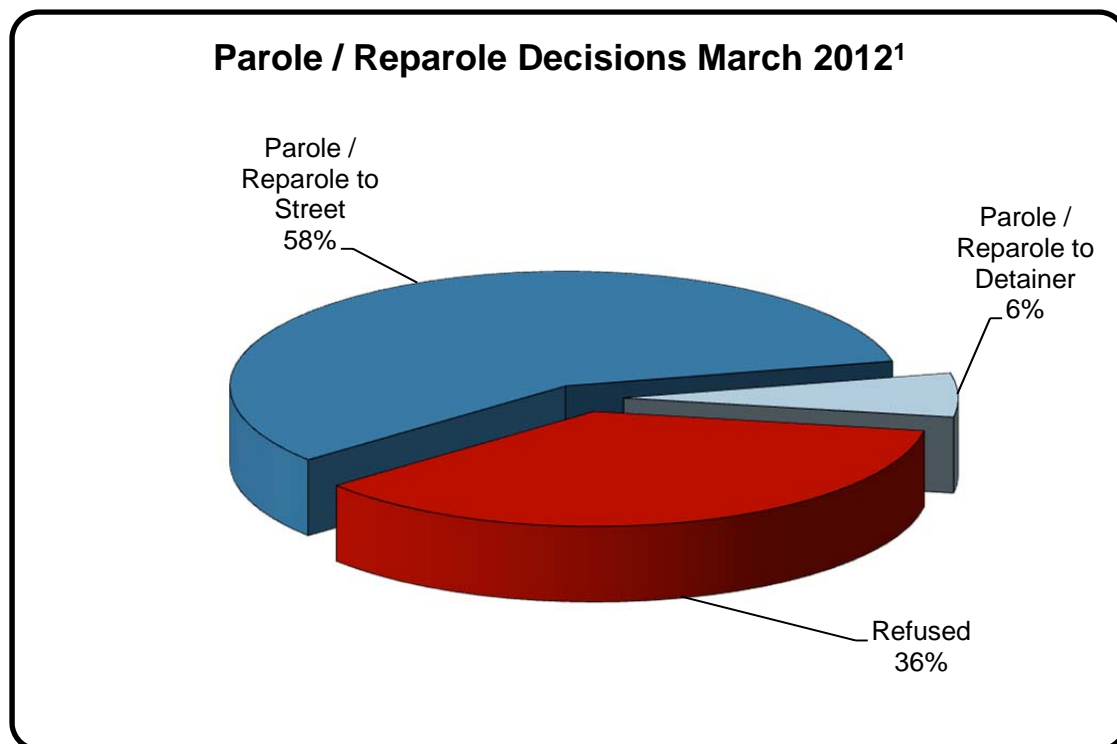


Table 7
BOARD DECISIONS
March 2012

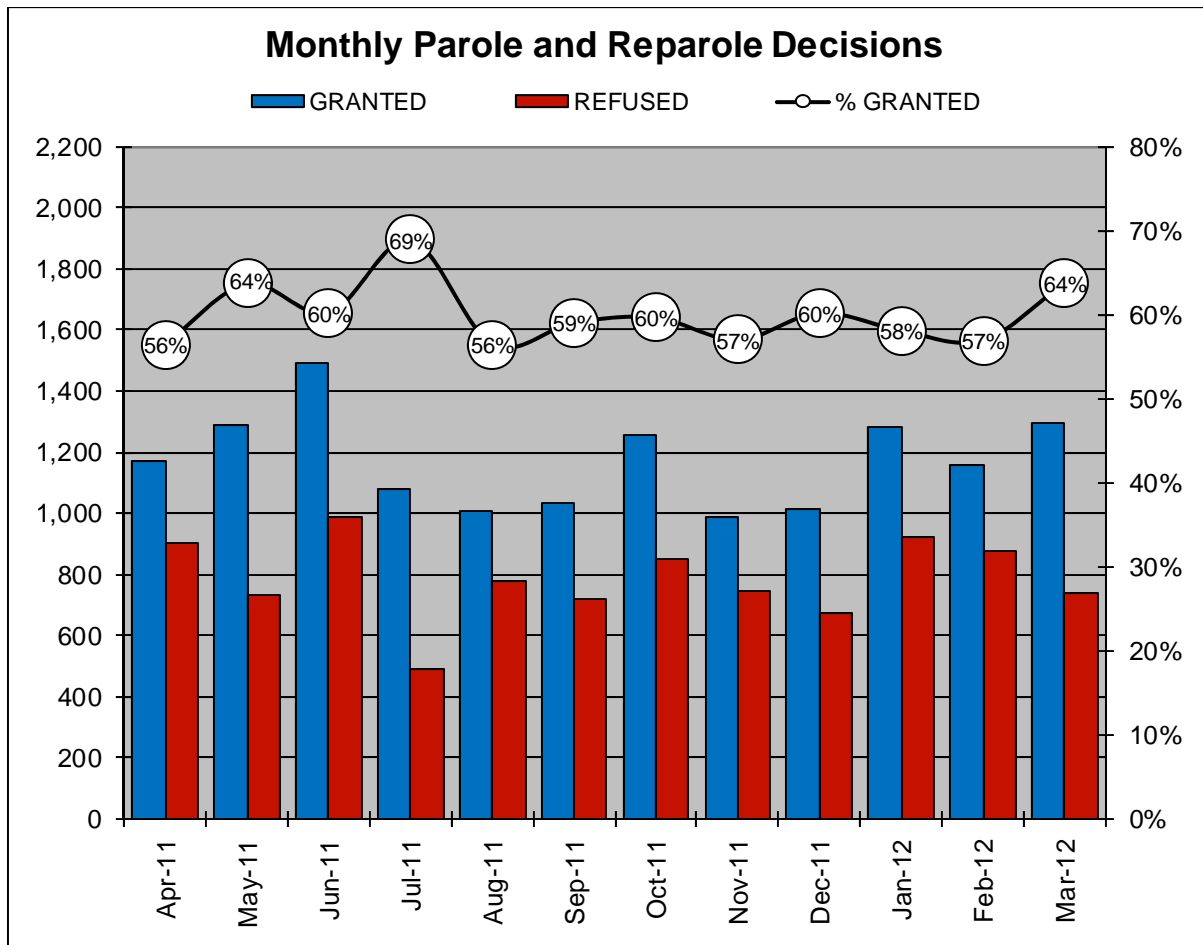
Type of Decision		Total
Parole / Reparole to Street	1,171	
Parole / Reparole to Detainer	125	
Refused	736	
Total Considered		2,032
<hr/>		
Recommitments as TPV	367	
Recommitments as CPV	160	
Recommitments as CPV and TPV	37	
Total Recommitments		564
Refer to Prior Action		116
Other Decisions		753
Total Decisions		3,465



¹ The 64% does not necessarily reflect the overall grant rate, but rather is the calculated percent of grant decisions for the total number of Board Actions produced during this period of time.

Table 8
MONTHLY PAROLE and REPAROLE DECISIONS
March 2012

MONTH-YEAR	GRANTED	REFUSED	CONSIDERED	% GRANTED
Apr-11	1,173	904	2,077	56%
May-11	1,286	734	2,020	64%
Jun-11	1,489	985	2,474	60%
Jul-11	1,081	488	1,569	69%
Aug-11	1,008	777	1,785	56%
Sep-11	1,032	716	1,748	59%
Oct-11	1,259	852	2,111	60%
Nov-11	986	744	1,730	57%
Dec-11	1,015	671	1,686	60%
Jan-12	1,282	925	2,207	58%
Feb-12	1,156	874	2,030	57%
Mar-12	1,296	736	2,032	64%
Monthly Average Over 12 Months	1,172	784	1,956	60%

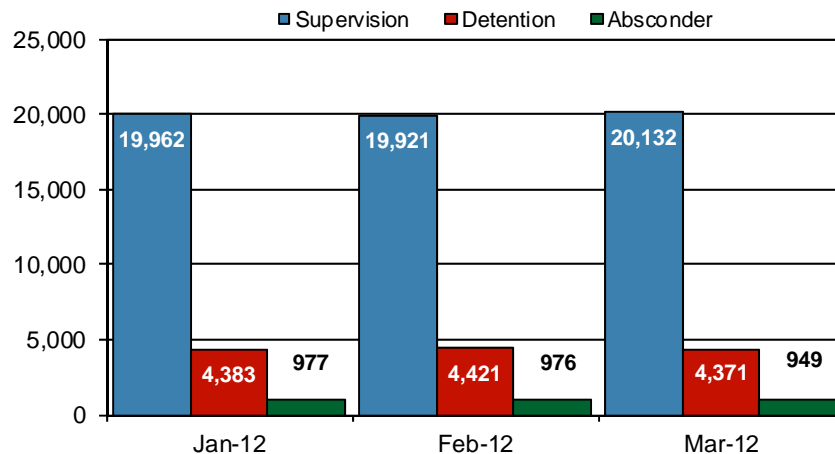


PBPP Population Breakdown By Place of Incarceration/Jurisdiction – March 2012

Offender Status - March 2012					
Status	State Prison	County Prison	County Sentence	Other States Cases	Total
Supervision	18,802	1,330	5,825	2,869	28,826
Absconder	916	33	208	0	1,157
Detention	4,104	267	1,006	153	5,530
Total	23,822	1,630	7,039	3,022	35,513

PBPP Monthly Population Profile						
Offender Status	Oct-11	Nov-11	Dec-11	Jan-12	Feb-12	Mar-12
State sentence from state institution	23,530	23,438	23,567	23,680	23,671	23,822
Supervision	18,497	18,414	18,590	18,633	18,582	18,802
Absconder	921	934	945	937	936	916
Detention	4,112	4,090	4,032	4,110	4,153	4,104
State sentence from county prison	1,650	1,637	1,652	1,642	1,647	1,630
Supervision	1,337	1,328	1,342	1,329	1,339	1,330
Absconder	39	40	41	40	40	33
Detention	274	269	269	273	268	267
County sentence Prob & Parole	6,926	6,929	6,911	6,930	6,983	7,039
Supervision	5,772	5,768	5,765	5,785	5,801	5,825
Absconder	181	193	193	200	186	208
Detention	973	968	953	945	996	1,006
Other state's sentence Prob & Parole	3,071	3,079	3,083	3,058	3,088	3,022
Supervision	2,929	2,942	2,932	2,901	2,921	2,869
Absconder	0	0	0	0	0	0
Detention	142	137	151	157	167	153
PBPP Population end of month	35,177	35,083	35,213	35,310	35,389	35,513

State Sentence Cases by Offender Status



PBPP Population Breakdown By Place of Incarceration/Jurisdiction – March 2012

Monthly Count of Grant and Refuse Board Actions							
Type of Decision	County Prison			State Prison			All Grant/Refuse Board Actions
	Grant	Refuse	Total	Grant	Refuse	Total	
April 2011	45	38	83	1,128	866	1,994	2,077
May 2011	56	23	79	1,230	711	1,942	2,020
June 2011	52	24	76	1,437	961	2,398	2,474
July 2011	48	17	65	1,033	471	1,504	1,569
August 2011	51	28	79	957	749	1,706	1,785
September 2011	35	20	55	997	696	1,693	1,748
October 2011	54	24	78	1,205	828	2,033	2,111
November 2011	56	26	82	930	718	1,648	1,730
December 2011	42	12	54	973	659	1,632	1,686
January 2012	45	42	87	1,237	883	2,120	2,207
February 2012	47	15	62	1,109	859	1,968	2,030
March 2012	43	22	65	1,253	714	1,967	2,032
2012 Total	135	79	214	3,599	2,456	6,055	6,269

Additions and Deletions						
	Oct-11	Nov-11	Dec-11	Jan-12	Feb-12	Mar-12
Total Additions	1,430	1,157	1,411	1,421	1,352	1,443
State sentence - State Prison	953	709	942	986	869	1,006
State sentence - County Prison	63	40	71	56	53	60
County sentence Prob & Parole	284	261	255	246	268	248
Other state's sentence	130	147	143	133	162	129
Total Deletions	1,193	1,245	1,290	1,335	1,265	1,325
State sentence - State Prison	729	765	783	812	801	802
<i>Technical Violator</i>	239	252	298	295	269	243
<i>Convicted Violator</i>	142	139	148	131	144	178
<i>Successful Completion</i>	326	353	314	353	352	350
<i>Other Case Closure</i>	22	21	24	33	37	31
State sentence - County Prison	58	56	56	57	56	65
<i>Technical Violator</i>	13	17	13	12	9	16
<i>Convicted Violator</i>	10	5	4	5	7	9
<i>Successful Completion</i>	31	33	34	39	35	35
<i>Other Case Closure</i>	4	1	5	1	5	5
County sentence Prob & Parole	267	285	309	310	272	265
<i>Technical Violator</i>	33	22	32	41	33	42
<i>Convicted Violator</i>	21	35	35	34	25	25
<i>Successful Completion</i>	134	159	152	137	148	123
<i>Other Case Closure</i>	79	69	90	98	66	75
Other state's sentence	139	139	142	156	135	193
<i>Technical Violator</i>	2	0	0	3	2	4
<i>Convicted Violator</i>	3	4	2	2	4	4
<i>Successful Completion</i>	60	47	48	55	62	79
<i>Other Case Closure</i>	74	88	91	96	67	106
PBPP Population end of month	35,177	35,083	35,213	35,310	35,389	35,513