

COMMONWEALTH OF PENNSYLVANIA

Board of Probation and Parole

MONTHLY PROGRAM REPORT

June 2012



Tom Corbett
Governor

Michael C. Potteiger
Chairman

C. James Fox
Member

Michael L. Green
Member

Jeffrey R. Imboden
Member

Matthew T. Mangino, Esq
Member

Craig R. McKay
Member

John R. Tuttle
Member

Judith E. Viglione
Member

Lloyd A. White
Member

Carol Lavery
Victim Advocate

PBPP
AN EQUAL OPPORTUNITY EMPLOYER

Published July 13, 2012 by the PBPP Statistical Reporting and Evidence-Based Program Evaluation Office

Copyright © 2012 Commonwealth of Pennsylvania, Board of Probation and Parole. All rights reserved.

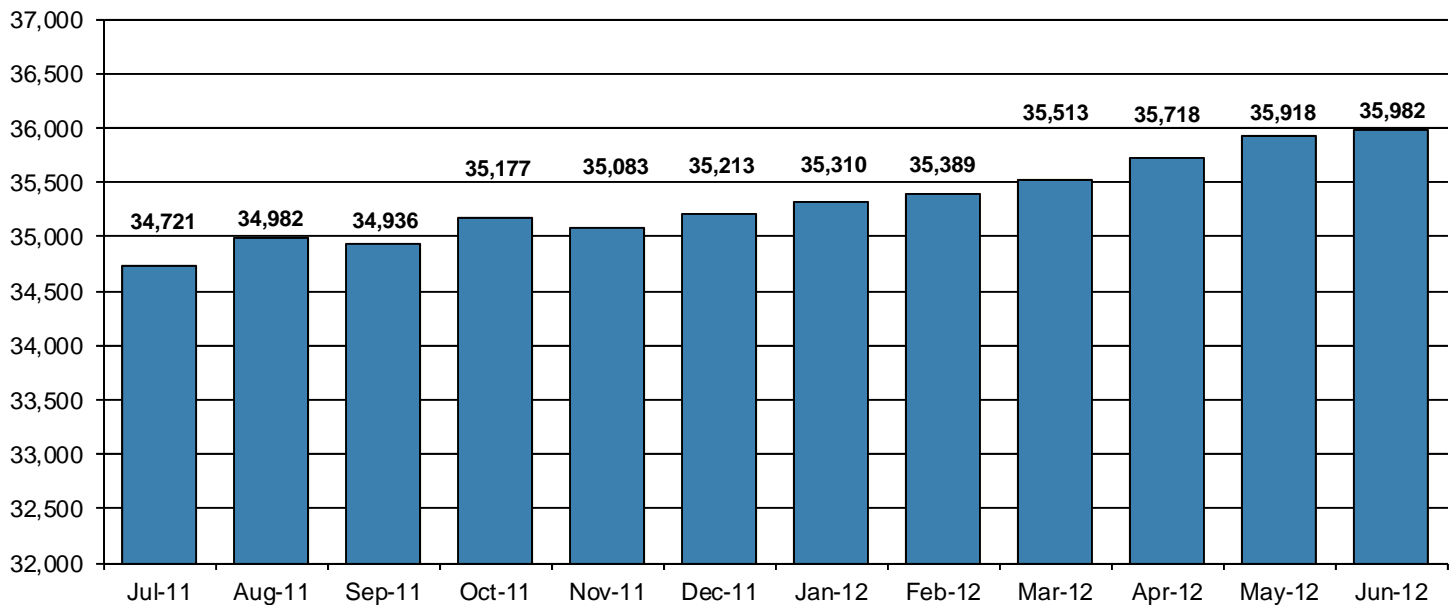
Table 1
WORKLOAD AND POPULATION CHANGES BY REGION / DISTRICT
June 2012

REGION / DISTRICT	Beginning Fiscal Yr ¹ July 2011	Current Month Population	Fiscal YTD Index	Additions	Deletions		Number of Agents ²	Average Workload	Total Workload
					Recommits/ Revocations	Other Deletions			
CHESTER	2,782	2,967	107	107	20	37	37	131	4,837
PHILADELPHIA	9,561	9,927	104	317	129	166	128	124	15,815
EASTERN REGION	12,343	12,894	104	424	149	203	165	125	20,652
ALLENTOWN	4,051	4,101	101	171	69	86	52	138	7,180
HARRISBURG	4,687	4,993	107	156	60	74	64	137	8,787
SCRANTON	1,876	1,907	102	72	36	52	31	115	3,567
WILLIAMSPORT	1,000	1,025	103	31	6	31	13	149	1,935
CENTRAL REGION	11,614	12,026	104	430	171	243	160	134	21,469
ALTOONA	1,520	1,453	96	47	25	28	24	118	2,838
MERCER	3,230	3,298	102	98	38	67	43	141	6,059
ERIE	1,544	1,669	108	59	22	48	25	122	3,052
PITTSBURGH	4,494	4,642	103	162	53	99	70	124	8,687
WESTERN REGION	10,788	11,062	103	366	138	242	162	127	20,636
TOTAL Supervised	34,745	35,982	104	1,220	458	688	487	129	62,756

¹ effective June 30² Filled agent positions

PA Offenders in Other States	3,116	3,077	99	42	13	42
------------------------------	--------------	--------------	-----------	-----------	-----------	-----------

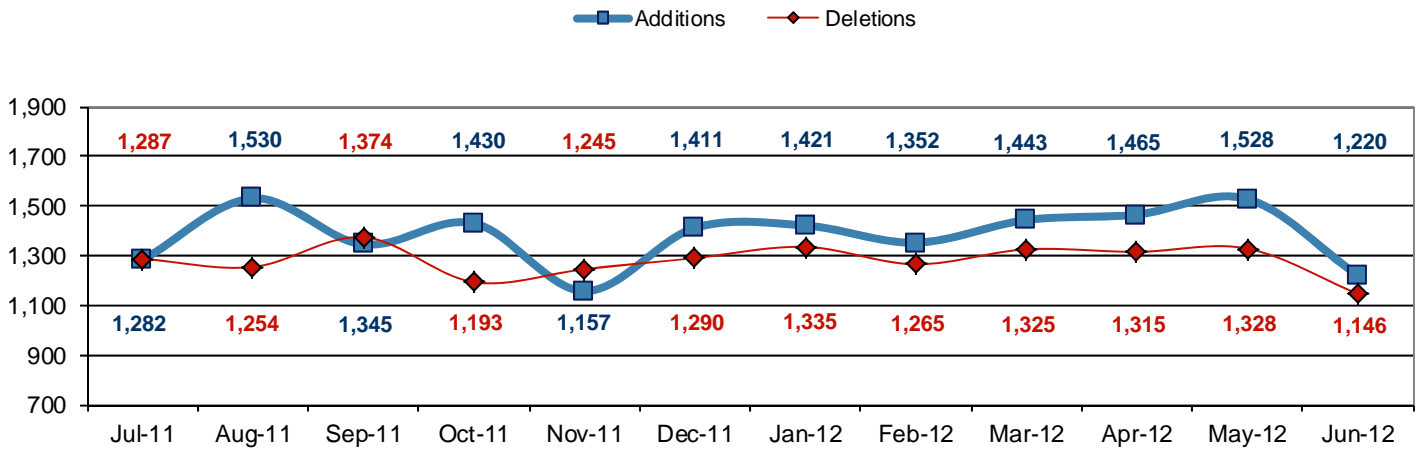
Population - Retrospective Year View



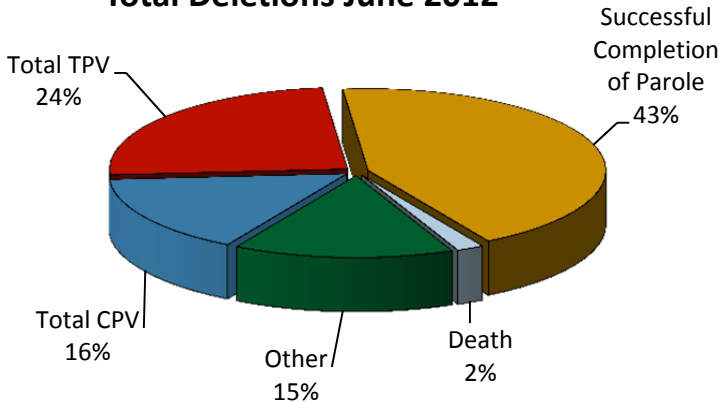
**Table 2
SUPERVISED POPULATION ADDITIONS AND DELETIONS
June 2012**

Population Additions and Deletions	Parole	Reparole	Special County Probation	Special County Parole	Other States' Probation	Other States' Parole	Monthly Total	Fiscal YTD Total
ADDITIONS	720	190	137	34	120	19	1,220	16,584
DELETIONS-RECOMMITMENTS								
<i>Convicted Parole Violator</i>								
State Corrections	118	20	2	0	0	0	140	1,856
County Corrections	8	3	20	6	0	0	37	418
Other States	0	0	0	0	1	0	1	31
<i>Total Convicted Parole Violator</i>	126	23	22	6	1	0	178	2,305
<i>Technical Parole Violator</i>								
State Corrections	175	55	2	0	0	0	232	3,173
County Corrections	4	2	26	13	0	0	45	564
Other States	0	0	0	0	3	0	3	21
<i>Total Technical Parole Violator</i>	179	57	28	13	3	0	280	3,758
TOTAL RECOMMITMENTS	305	80	50	19	4	0	458	6,063
Deletion Successful Completion	270	56	94	19	49	8	496	6,932
Deletion Death	12	1	4	1	2	1	21	265
Deletion Other	9	7	62	7	70	16	171	2,099
TOTAL DELETIONS	596	144	210	46	125	25	1,146	15,359

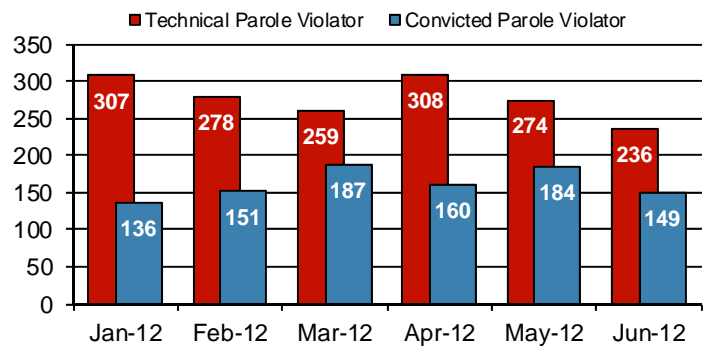
Population Additions & Deletions-Retrospective Year View



Total Deletions June 2012



State Sentence Parole Revocations*

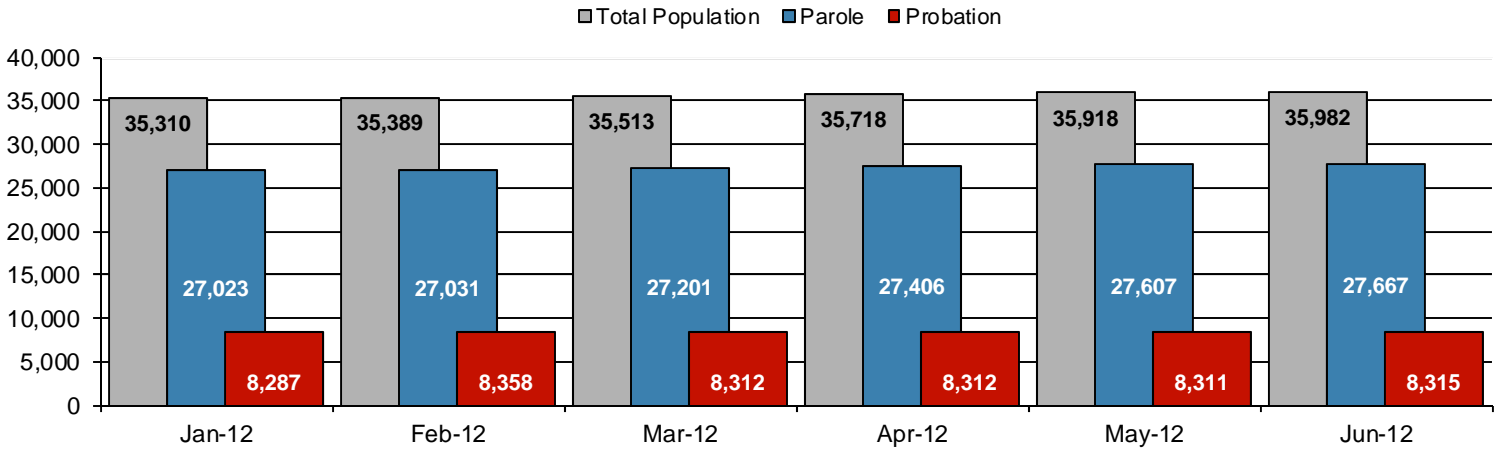


* These revocations represent field case closure records and are dependent on case processing.

**Table 3
SUPERVISED POPULATION BY ORIGINATING JURISDICTION and REGION / DISTRICT
June 2012**

Region / District	PA Parole State Sentence				County		Other States		Total Population
	State Prisons	Boot Camp	County Prisons	Subtotal	Special Probation	Special Parole	Probation	Parole	
Chester	1,707	43	202	1,952	632	18	317	48	2,967
Philadelphia	7,383	142	353	7,878	1,279	13	600	157	9,927
Eastern Region	9,090	185	555	9,830	1,911	31	917	205	12,894
Allentown	2,713	117	339	3,169	452	4	377	99	4,101
Harrisburg	3,889	190	172	4,251	380	4	293	65	4,993
Scranton	1,199	6	194	1,399	200	1	224	83	1,907
Williamsport	723	14	33	770	127	10	93	25	1,025
Central Region	8,524	327	738	9,589	1,159	19	987	272	12,026
Altoona	897	19	56	972	313	66	76	26	1,453
Mercer	740	19	45	804	1,435	938	97	24	3,298
Erie	1,097	43	192	1,332	196	50	74	17	1,669
Pittsburgh	3,083	195	89	3,367	886	54	264	71	4,642
Western Region	5,817	276	382	6,475	2,830	1,108	511	138	11,062
Total	23,431	788	1,675	25,894	5,900	1,158	2,415	615	35,982
Percent of Total	65%	2%	5%	72%	16%	3%	7%	2%	100%

Parole and Probation Supervised Populations



Supervised State Sentence Cases

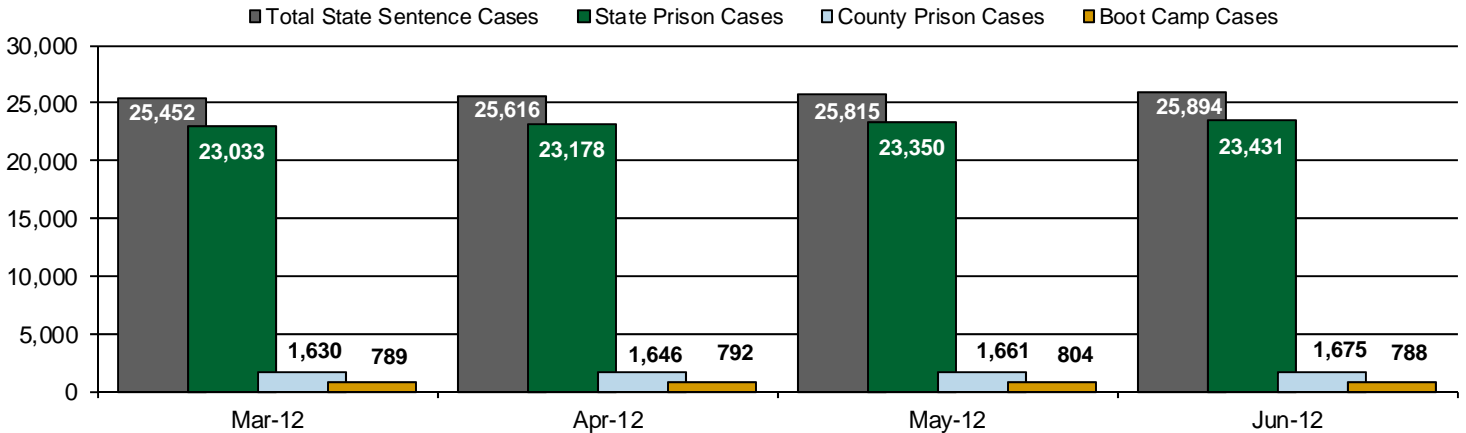
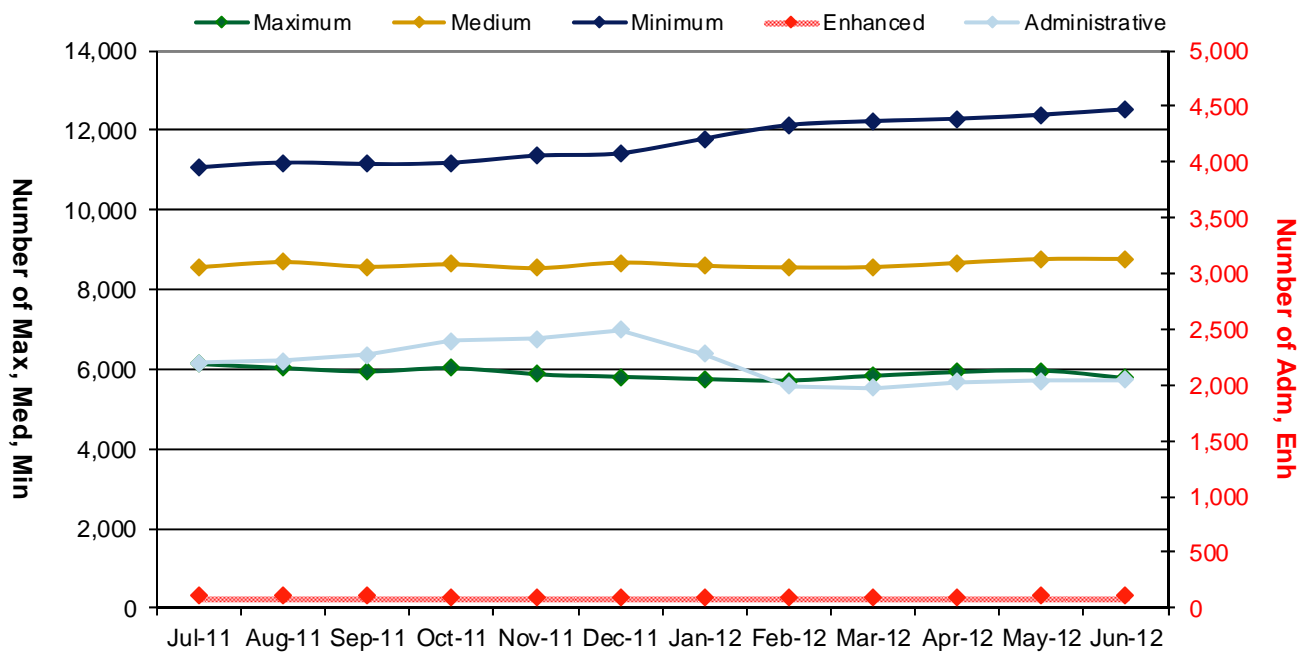


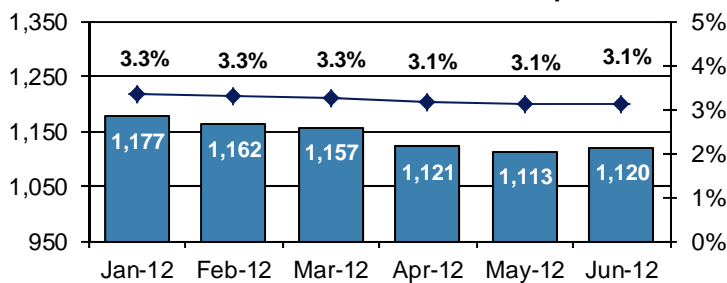
Table 4
SUPERVISED POPULATION BY GRADE OF SUPERVISION and REGION / DISTRICT
June 2012

Region / District	Reporting						Non-Reporting		Total Population	
	Enhanced	Maximum	Medium	Minimum	ADM / SPC	Not Classified	Subtotal	Absconder		Detainees
Chester	5	267	708	1,224	284	15	2,503	51	413	2,967
Philadelphia	1	1,378	2,106	3,812	369	53	7,719	431	1,777	9,927
Eastern Region	6	1,645	2,814	5,036	653	68	10,222	482	2,190	12,894
Allentown	13	791	904	1,470	138	33	3,349	167	585	4,101
Harrisburg	17	907	1,126	1,510	388	25	3,973	165	855	4,993
Scranton	13	294	449	701	134	3	1,594	38	275	1,907
Williamsport	0	106	289	367	115	1	878	16	131	1,025
Central Region	43	2,098	2,768	4,048	775	62	9,794	386	1,846	12,026
Altoona	1	274	432	470	85	1	1,263	21	169	1,453
Mercer	3	233	943	1,427	309	3	2,918	56	324	3,298
Erie	9	315	429	545	150	1	1,449	36	184	1,669
Pittsburgh	46	1,208	1,381	999	77	7	3,718	139	785	4,642
Western Region	59	2,030	3,185	3,441	621	12	9,348	252	1,462	11,062
Total	108	5,773	8,767	12,525	2,049	142	29,364	1,120	5,498	35,982
Percent of Total	<1%	16%	24%	35%	6%	<1%	82%	3%	15%	100%

PBPP Active Cases By Supervision Level



Number of Absconders and % of Population



Number of Detainees and % of Population

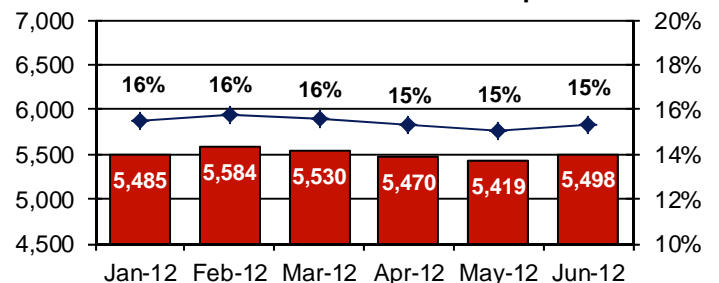


Table 5
SUPERVISED POPULATION BY GENDER, RACE and REGION / DISTRICT
June 2012

Region / District	Male					Female					% Male	Total Population
	White	Black	Hispanic	Other ¹	Total	White	Black	Hispanic	Other ¹	Total		
Chester	1,249	1,294	125	27	2,695	188	72	6	6	272	91%	2,967
Philadelphia	1,267	6,651	1,192	149	9,259	175	413	73	7	668	93%	9,927
EASTERN REGION	2,516	7,945	1,317	176	11,954	363	485	79	13	940	93%	12,894
Allentown	1,880	820	951	37	3,688	272	78	57	6	413	90%	4,101
Harrisburg	2,224	1,586	560	41	4,411	390	136	46	10	582	88%	4,993
Scranton	1,193	366	97	17	1,673	195	24	11	4	234	88%	1,907
Williamsport	730	90	7	3	830	166	20	7	2	195	81%	1,025
CENTRAL REGION	6,027	2,862	1,615	98	10,602	1,023	258	121	22	1,424	88%	12,026
Altoona	1,046	129	8	12	1,195	247	10	0	1	258	82%	1,453
Mercer	2,179	385	5	10	2,579	637	80	1	1	719	78%	3,298
Erie	983	378	57	8	1,426	187	49	4	3	243	85%	1,669
Pittsburgh	1,977	2,088	53	19	4,137	344	151	3	7	505	89%	4,642
WESTERN REGION	6,185	2,980	123	49	9,337	1,415	290	8	12	1,725	84%	11,062
TOTAL	14,728	13,787	3,055	323	31,893	2,801	1,033	208	47	4,089	89%	35,982

¹ "Other" includes Asian, Pacific Islander, Native American, Native Alaskan, and cases not elsewhere classified.

Table 6
SUPERVISED POPULATION BY EMPLOYMENT STATUS and REGION / DISTRICT
June 2012

Region / District	In Labor Force				Not In Labor Force					Total Population
	Employed Part Time	Employed Full Time	Unemployed	Employment Rate	Unable to Work ²	Student	Unearned Income ³	Unknown	Non-Reporting	
Chester	150	1,213	747	65%	273	31	87	2	464	2,967
Philadelphia	527	2,443	3,427	46%	712	116	494	0	2,208	9,927
EASTERN REGION	677	3,656	4,174	51%	985	147	581	2	2,672	12,894
Allentown	293	1,559	587	76%	517	65	328	0	752	4,101
Harrisburg	186	1,698	1,599	54%	291	34	164	1	1,020	4,993
Scranton	53	944	277	78%	138	12	170	0	313	1,907
Williamsport	112	472	116	83%	81	12	85	0	147	1,025
CENTRAL REGION	644	4,673	2,579	67%	1,027	123	747	1	2,232	12,026
Altoona	158	480	336	66%	100	17	172	0	190	1,453
Mercer	320	996	855	61%	394	41	311	1	380	3,298
Erie	126	558	359	66%	215	21	169	1	220	1,669
Pittsburgh	243	1,608	852	68%	673	53	287	2	924	4,642
WESTERN REGION	847	3,642	2,402	65%	1,382	132	939	4	1,714	11,062
TOTAL	2,168	11,971	9,155	61%	3,394	402	2,267	7	6,618	35,982

² Offender is unable to work due to a physical or mental disability, is a care provider, attends inpatient treatment, etc.

³ Offender collects income assistance, workman's compensation, monthly pension, Social Security, disability payments, etc.

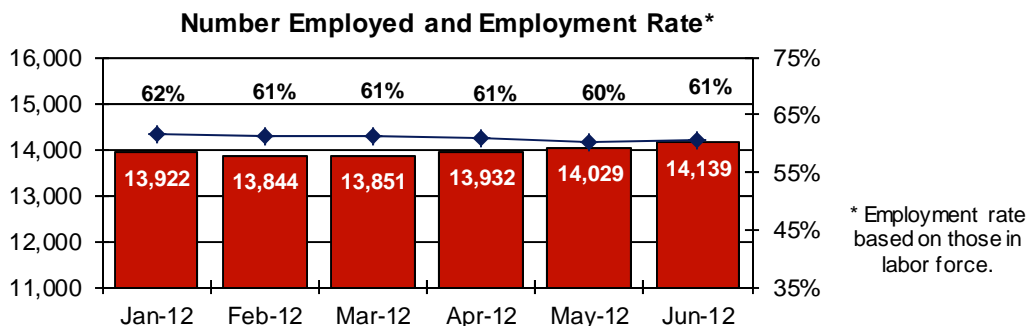
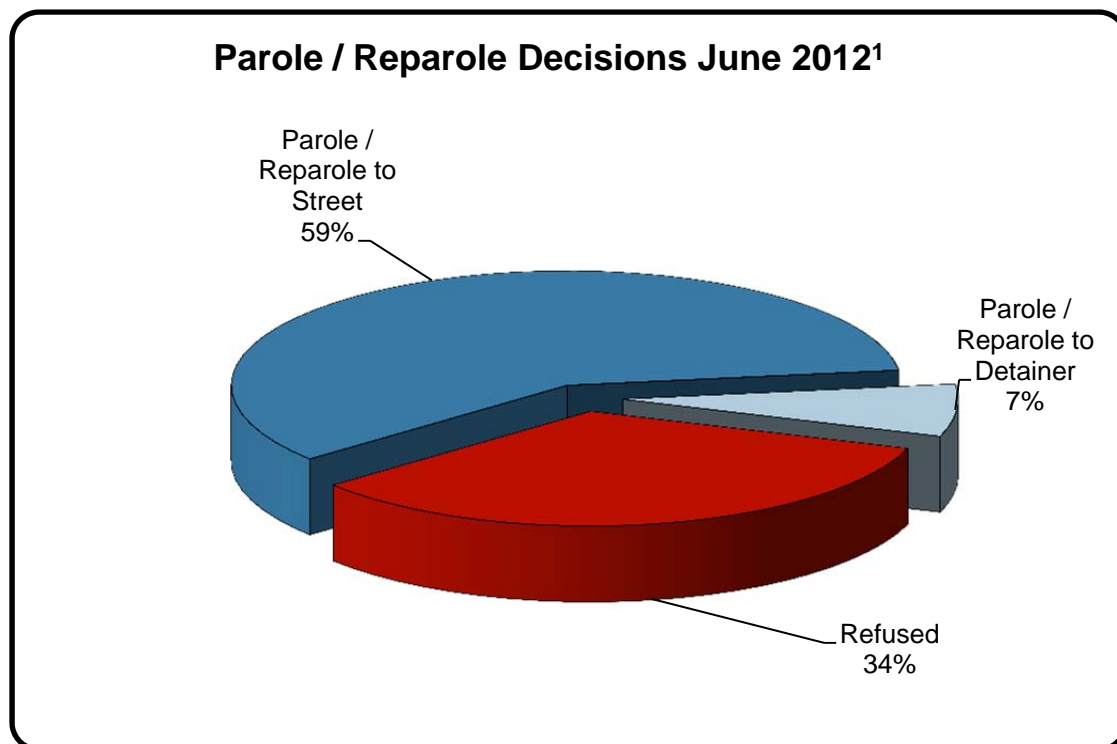


Table 7
BOARD DECISIONS
June 2012

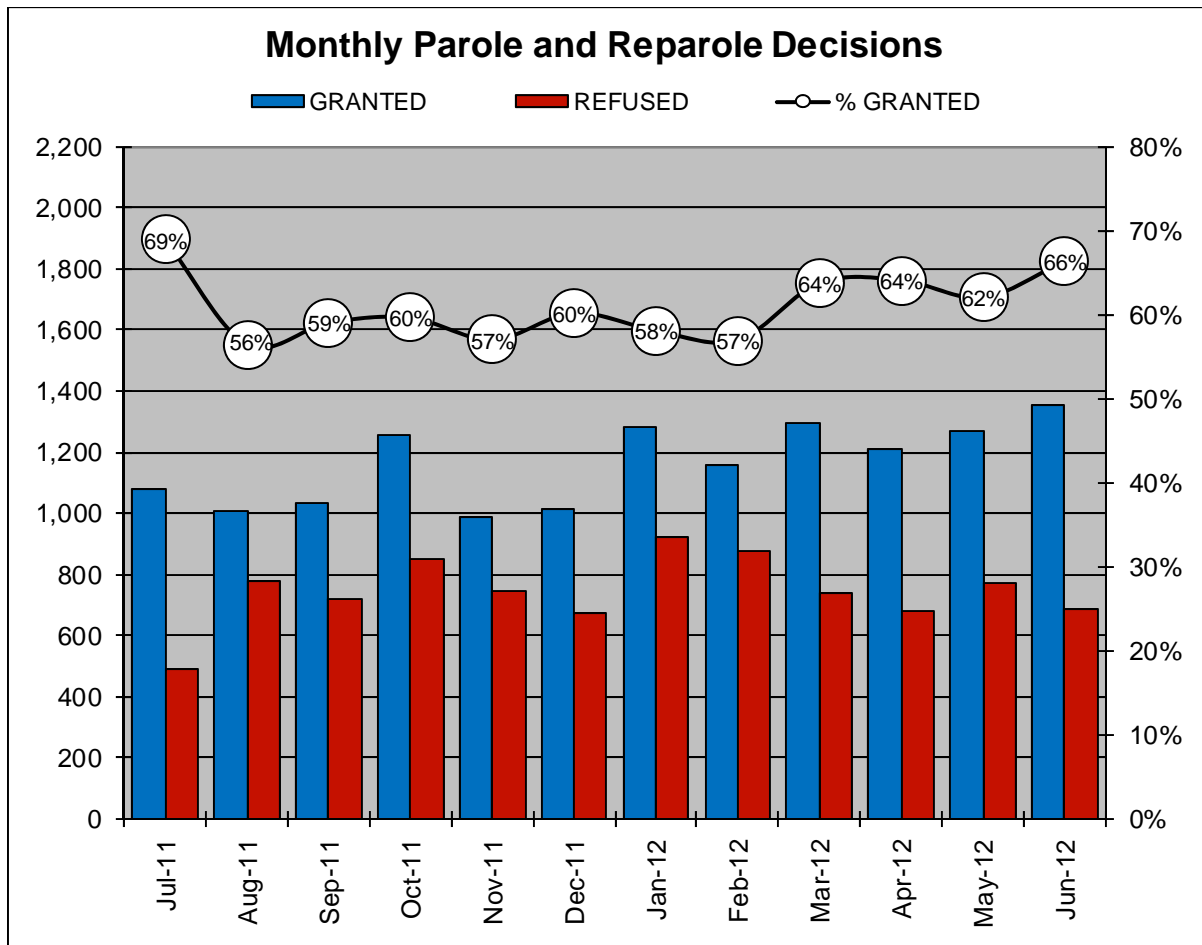
Type of Decision		Total
Parole / Reparole to Street	1,203	
Parole / Reparole to Detainer	150	
Refused	686	
Total Considered		2,039
<hr/>		
Recommitments as TPV	389	
Recommitments as CPV	170	
Recommitments as CPV and TPV	31	
Total Recommitments		590
Refer to Prior Action		102
Other Decisions		762
Total Decisions		3,493



¹ The 66% does not necessarily reflect the overall grant rate, but rather is the calculated percent of grant decisions for the total number of Board Actions produced during this period of time.

Table 8
MONTHLY PAROLE and REPAROLE DECISIONS
June 2012

MONTH-YEAR	GRANTED	REFUSED	CONSIDERED	% GRANTED
Jul-11	1,081	488	1,569	69%
Aug-11	1,008	777	1,785	56%
Sep-11	1,032	716	1,748	59%
Oct-11	1,259	852	2,111	60%
Nov-11	986	744	1,730	57%
Dec-11	1,015	671	1,686	60%
Jan-12	1,282	925	2,207	58%
Feb-12	1,156	874	2,030	57%
Mar-12	1,296	736	2,032	64%
Apr-12	1,212	679	1,891	64%
May-12	1,266	774	2,040	62%
Jun-12	1,353	686	2,039	66%
Monthly Average Over 12 Months	1,162	744	1,906	61%

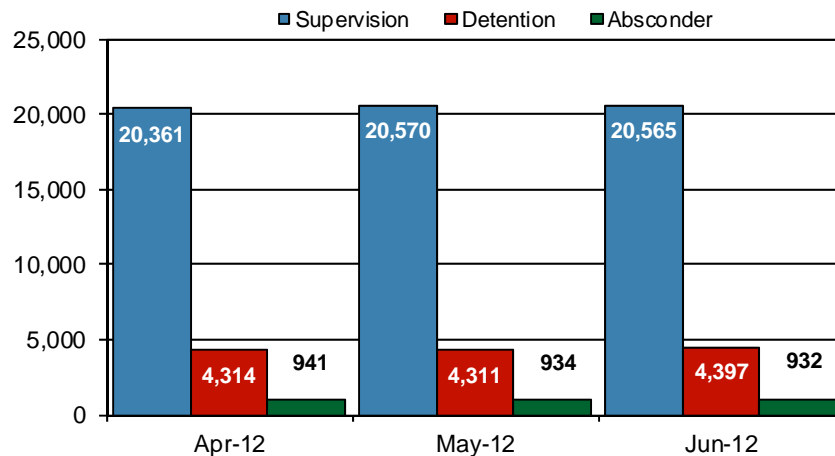


PBPP Population Breakdown By Place of Incarceration/Jurisdiction – June 2012

Offender Status - June 2012					
Status	State Prison	County Prison	County Sentence	Other States Cases	Total
Supervision	19,198	1,367	5,906	2,893	29,364
Absconder	888	44	187	1	1,120
Detention	4,133	264	965	136	5,498
Total	24,219	1,675	7,058	3,030	35,982

PBPP Monthly Population Profile						
Offender Status	Jan-12	Feb-12	Mar-12	Apr-12	May-12	Jun-12
State sentence from state institution	23,680	23,671	23,822	23,970	24,154	24,219
Supervision	18,633	18,582	18,802	19,014	19,209	19,198
Absconder	937	936	916	902	894	888
Detention	4,110	4,153	4,104	4,054	4,051	4,133
State sentence from county prison	1,642	1,647	1,630	1,646	1,661	1,675
Supervision	1,329	1,339	1,330	1,347	1,361	1,367
Absconder	40	40	33	39	40	44
Detention	273	268	267	260	260	264
County sentence Prob & Parole	6,930	6,983	7,039	7,079	7,066	7,058
Supervision	5,785	5,801	5,825	5,896	5,918	5,906
Absconder	200	186	208	180	179	187
Detention	945	996	1,006	1,003	969	965
Other state's sentence Prob & Parole	3,058	3,088	3,022	3,023	3,037	3,030
Supervision	2,901	2,921	2,869	2,870	2,898	2,893
Absconder	0	0	0	0	0	1
Detention	157	167	153	153	139	136
PBPP Population end of month	35,310	35,389	35,513	35,718	35,918	35,982

State Sentence Cases by Offender Status



PBPP Population Breakdown By Place of Incarceration/Jurisdiction – June 2012

Monthly Count of Grant and Refuse Board Actions							
Type of Decision	County Prison			State Prison			All Grant/Refuse Board Actions
	Grant	Refuse	Total	Grant	Refuse	Total	
July 2011	48	17	65	1,033	471	1,504	1,569
August 2011	51	28	79	957	749	1,706	1,785
September 2011	35	20	55	997	696	1,693	1,748
October 2011	54	24	78	1,205	828	2,033	2,111
November 2011	56	26	82	930	718	1,648	1,730
December 2011	42	12	54	973	659	1,632	1,686
January 2012	45	42	87	1,237	883	2,120	2,207
February 2012	47	15	62	1,109	859	1,968	2,030
March 2012	43	22	65	1,253	714	1,967	2,032
April 2012	43	13	56	1,169	666	1,835	1,891
May 2012	35	20	55	1,231	754	1,985	2,040
June 2012	44	21	65	1,309	665	1,974	2,039
2012 Total	257	133	390	7,308	4,541	11,849	12,239

Additions and Deletions						
	Jan-12	Feb-12	Mar-12	Apr-12	May-12	Jun-12
Total Additions	1,421	1,352	1,443	1,465	1,528	1,220
State sentence - State Prison	986	869	1,006	1,008	1,041	842
State sentence - County Prison	56	53	60	67	79	68
County sentence Prob & Parole	246	268	248	250	238	171
Other state's sentence	133	162	129	140	170	139
Total Deletions	1,335	1,265	1,325	1,315	1,328	1,146
State sentence - State Prison	812	801	802	806	791	687
<i>Technical Violator</i>	295	269	243	293	264	230
<i>Convicted Violator</i>	131	144	178	154	173	138
<i>Successful Completion</i>	353	352	350	323	325	292
<i>Other Case Closure</i>	33	37	31	36	28	27
State sentence - County Prison	57	56	65	56	54	53
<i>Technical Violator</i>	12	9	16	15	10	6
<i>Convicted Violator</i>	5	7	9	6	11	11
<i>Successful Completion</i>	39	35	35	29	31	34
<i>Other Case Closure</i>	1	5	5	6	3	2
County sentence Prob & Parole	310	272	265	306	326	256
<i>Technical Violator</i>	41	33	42	53	45	41
<i>Convicted Violator</i>	34	25	25	25	38	28
<i>Successful Completion</i>	137	148	123	163	159	113
<i>Other Case Closure</i>	98	66	75	65	84	74
Other state's sentence	156	135	193	147	157	150
<i>Technical Violator</i>	3	2	4	1	4	3
<i>Convicted Violator</i>	2	4	4	2	2	1
<i>Successful Completion</i>	55	62	79	61	53	57
<i>Other Case Closure</i>	96	67	106	83	98	89
PBPP Population end of month	35,310	35,389	35,513	35,718	35,918	35,982