

# COMMONWEALTH OF PENNSYLVANIA

## Board of Probation and Parole

### MONTHLY PROGRAM REPORT

August 2011



**Tom Corbett**  
Governor

Lloyd A. White  
Chairman

C. James Fox  
Member

Jeffrey R. Imboden  
Member

Benjamin A. Martinez  
Member

John R. Tuttle  
Member

Michael L. Green  
Member

Matthew T. Mangino, Esq  
Member

Catherine C. McVey  
Member

Judith E. Viglione  
Member

Carol Lavery  
Victim Advocate

**PBPP**  
AN EQUAL OPPORTUNITY EMPLOYER

Published September 15, 2011 by the PBPP Statistical Reporting and Evidence-Based Program Evaluation Office

Copyright © 2011 by the Pennsylvania Board of Probation and Parole. All rights reserved.

**Table 1  
WORKLOAD AND POPULATION CHANGES BY REGION / DISTRICT  
August 2011**

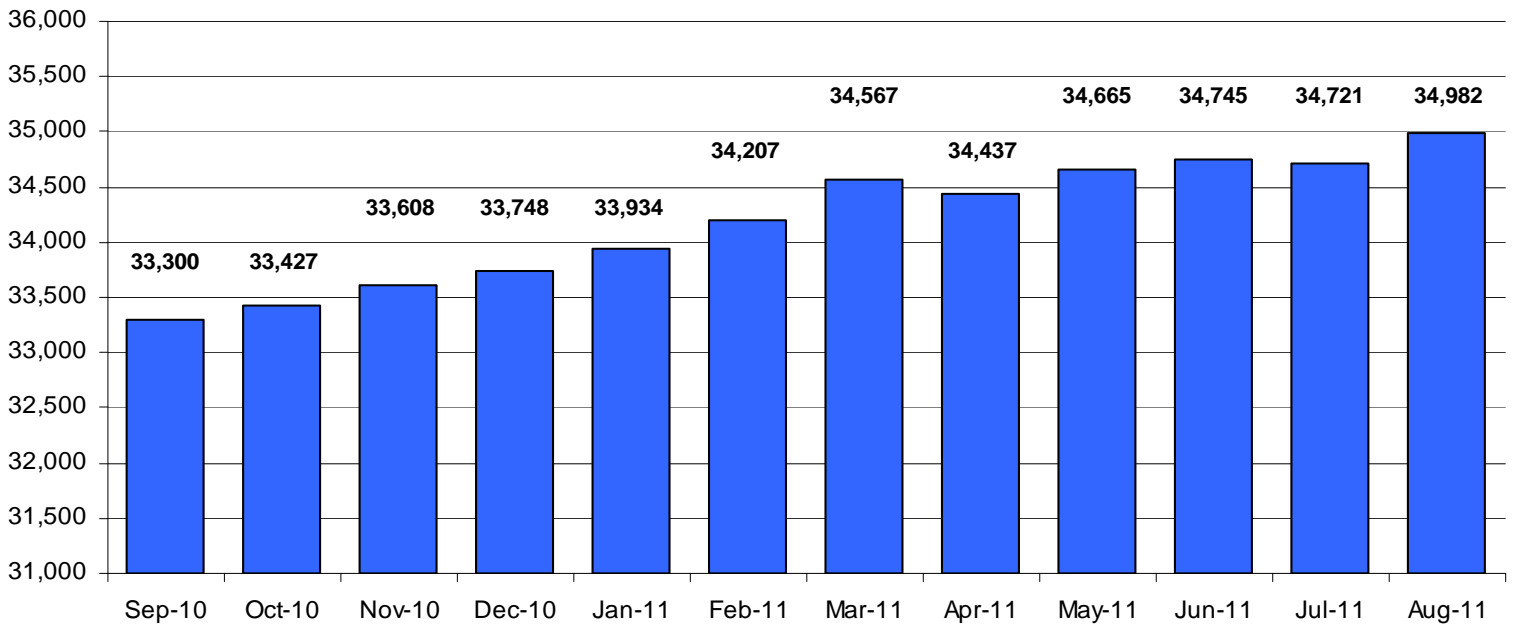
REGION / DISTRICT	Beginning Fiscal Yr <sup>1</sup> July 2011	Current Month Population	Fiscal YTD Index	Additions	Deletions		Number of Agents <sup>2</sup>	Average Workload	Total Workload
					Recommits/ Revocations	Other Deletions			
CHESTER	2,782	2,784	100	87	35	72	37	127	4,714
PHILADELPHIA	9,561	9,606	100	379	150	218	127	123	15,625
<b>EASTERN REGION</b>	<b>12,343</b>	<b>12,390</b>	<b>100</b>	<b>466</b>	<b>185</b>	<b>290</b>	<b>164</b>	<b>124</b>	<b>20,338</b>
ALLENTOWN	4,051	4,074	101	191	15	90	53	134	7,102
HARRISBURG	4,687	4,805	103	227	60	71	59	144	8,523
SCRANTON	1,876	1,902	101	111	43	71	28	127	3,552
WILLIAMSPORT	1,000	992	99	34	16	21	15	124	1,866
<b>CENTRAL REGION</b>	<b>11,614</b>	<b>11,773</b>	<b>101</b>	<b>563</b>	<b>134</b>	<b>253</b>	<b>155</b>	<b>136</b>	<b>21,043</b>
ALTOONA	1,520	1,526	100	54	17	31	20	150	3,007
MERCER	3,230	3,205	99	157	41	109	42	146	6,129
ERIE	1,544	1,604	104	59	8	0	23	125	2,878
PITTSBURGH	4,494	4,484	100	231	76	110	65	132	8,569
<b>WESTERN REGION</b>	<b>10,788</b>	<b>10,819</b>	<b>100</b>	<b>501</b>	<b>142</b>	<b>250</b>	<b>150</b>	<b>137</b>	<b>20,583</b>
<b>TOTAL Supervised</b>	<b>34,745</b>	<b>34,982</b>	<b>101</b>	<b>1,530</b>	<b>461</b>	<b>793</b>	<b>469</b>	<b>132</b>	<b>61,964</b>

<sup>1</sup> effective June 30

<sup>2</sup> Filled agent positions

PA Offenders in Other States	<b>3,116</b>	<b>3,143</b>	<b>101</b>	<b>70</b>	<b>16</b>	<b>62</b>
------------------------------	--------------	--------------	------------	-----------	-----------	-----------

**Population - Retrospective Year View**

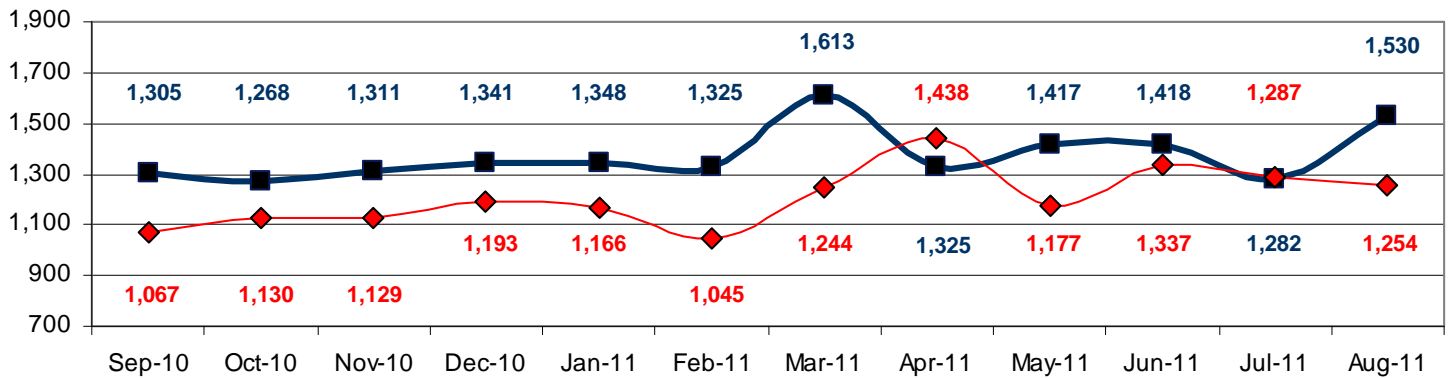


**Table 2  
SUPERVISED POPULATION ADDITIONS AND DELETIONS  
August 2011**

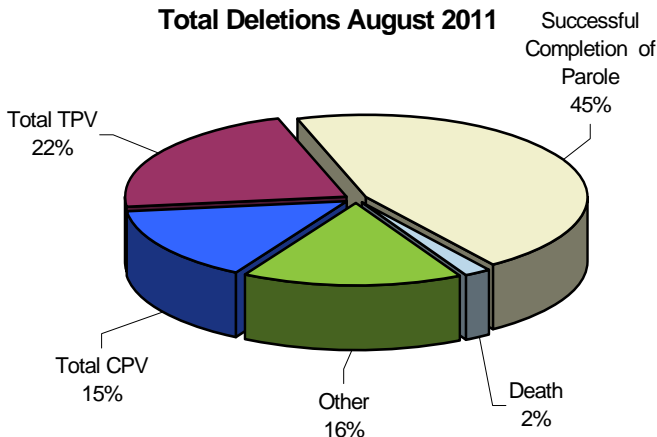
Population Additions and Deletions	Parole	Reparole	Special County Probation	Special County Parole	Other States' Probation	Other States' Parole	Monthly Total	Fiscal YTD Total
<b>ADDITIONS</b>	877	218	230	72	105	28	1,530	2,812
<b>DELETIONS-RECOMMITMENTS</b>								
<i>Convicted Parole Violator</i>								
State Corrections	106	32	2	0	0	0	140	318
County Corrections	6	5	26	5	0	0	42	81
Other States	0	0	0	0	1	1	2	6
<b>Total Convicted Parole Violator</b>	112	37	28	5	1	1	184	405
<i>Technical Parole Violator</i>								
State Corrections	180	52	5	0	0	0	237	481
County Corrections	10	1	20	7	0	0	38	94
Other States	0	0	0	0	2	0	2	2
<b>Total Technical Parole Violator</b>	190	53	25	7	2	0	277	577
<b>TOTAL RECOMMITMENTS</b>	302	90	53	12	3	1	461	982
Deletion Successful Completion	322	55	108	26	48	8	567	1,163
Deletion Death	13	4	5	0	1	0	23	40
Deletion Other	11	9	79	10	85	9	203	356
<b>TOTAL DELETIONS</b>	648	158	245	48	137	18	1,254	2,541

**Population Additions & Deletions-Retrospective Year View**

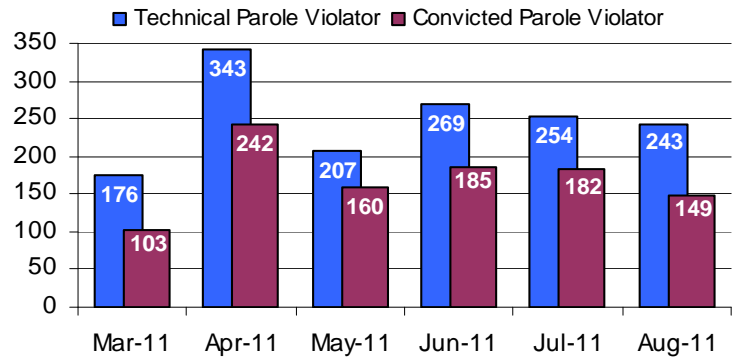
■ ADDITIONS ◆ DELETIONS



**Total Deletions August 2011**



**State Sentence Parole Revocations\***



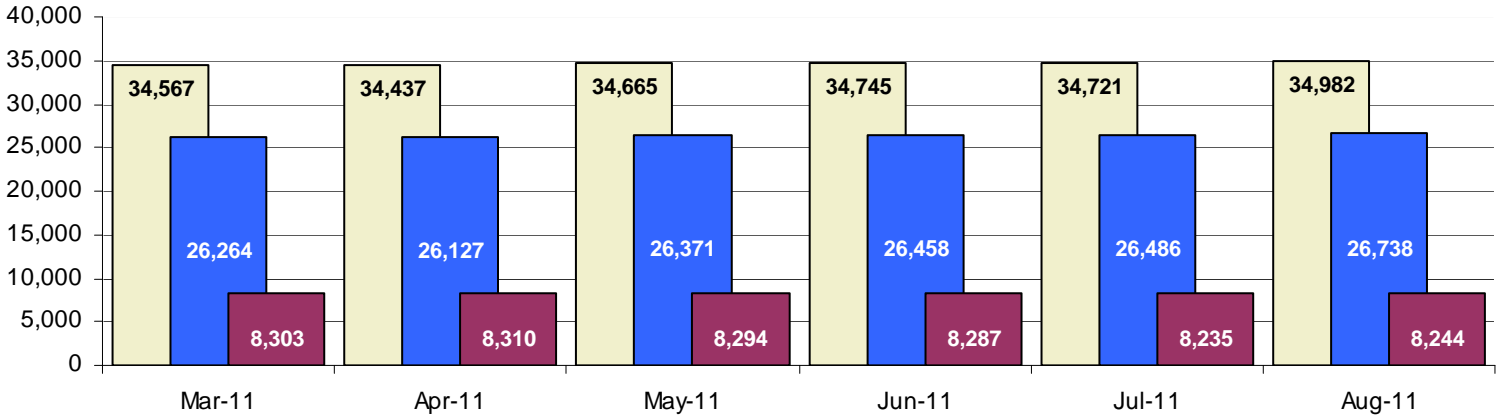
\* These revocations represent field case closure records and are dependent on case processing.

**Table 3**  
**SUPERVISED POPULATION BY ORIGINATING JURISDICTION and REGION / DISTRICT**  
**August 2011**

Region / District	PA Parole State Sentence				County		Other States		Total Population
	State Prisons	Boot Camp	County Prisons	Subtotal	Special Probation	Special Parole	Probation	Parole	
Chester	1,601	44	221	1,866	553	10	299	56	2,784
Philadelphia	7,088	171	339	7,598	1,218	9	636	145	9,606
<b>Eastern Region</b>	<b>8,689</b>	<b>215</b>	<b>560</b>	<b>9,464</b>	<b>1,771</b>	<b>19</b>	<b>935</b>	<b>201</b>	<b>12,390</b>
Allentown	2,667	139	378	3,184	407	3	392	88	4,074
Harrisburg	3,735	197	142	4,074	381	4	290	56	4,805
Scranton	1,150	10	216	1,376	204	1	253	68	1,902
Williamsport	699	15	40	754	123	4	88	23	992
<b>Central Region</b>	<b>8,251</b>	<b>361</b>	<b>776</b>	<b>9,388</b>	<b>1,115</b>	<b>12</b>	<b>1,023</b>	<b>235</b>	<b>11,773</b>
Altoona	882	20	72	974	366	78	80	28	1,526
Mercer	743	21	29	793	1,415	861	107	29	3,205
Erie	1,061	39	160	1,260	195	58	72	19	1,604
Pittsburgh	2,924	179	70	3,173	881	76	284	70	4,484
<b>Western Region</b>	<b>5,610</b>	<b>259</b>	<b>331</b>	<b>6,200</b>	<b>2,857</b>	<b>1,073</b>	<b>543</b>	<b>146</b>	<b>10,819</b>
<b>Total</b>	<b>22,550</b>	<b>835</b>	<b>1,667</b>	<b>25,052</b>	<b>5,743</b>	<b>1,104</b>	<b>2,501</b>	<b>582</b>	<b>34,982</b>
<b>Percent of Total</b>	<b>65%</b>	<b>2%</b>	<b>5%</b>	<b>72%</b>	<b>16%</b>	<b>3%</b>	<b>7%</b>	<b>2%</b>	<b>100%</b>

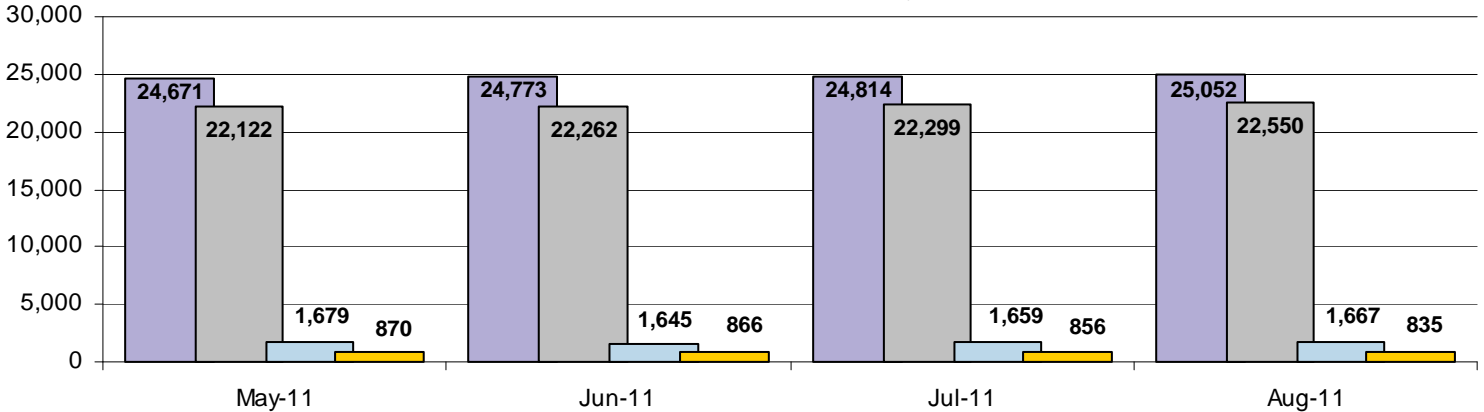
**Parole and Probation Supervised Populations**

□ Total Population    ■ Parole    ■ Probation



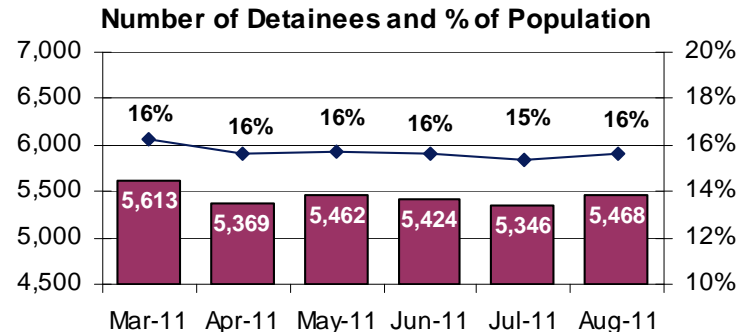
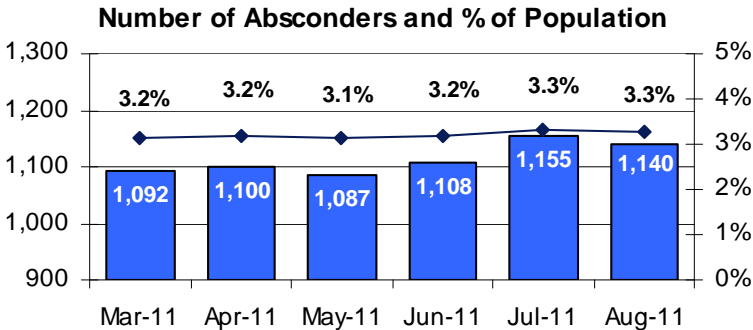
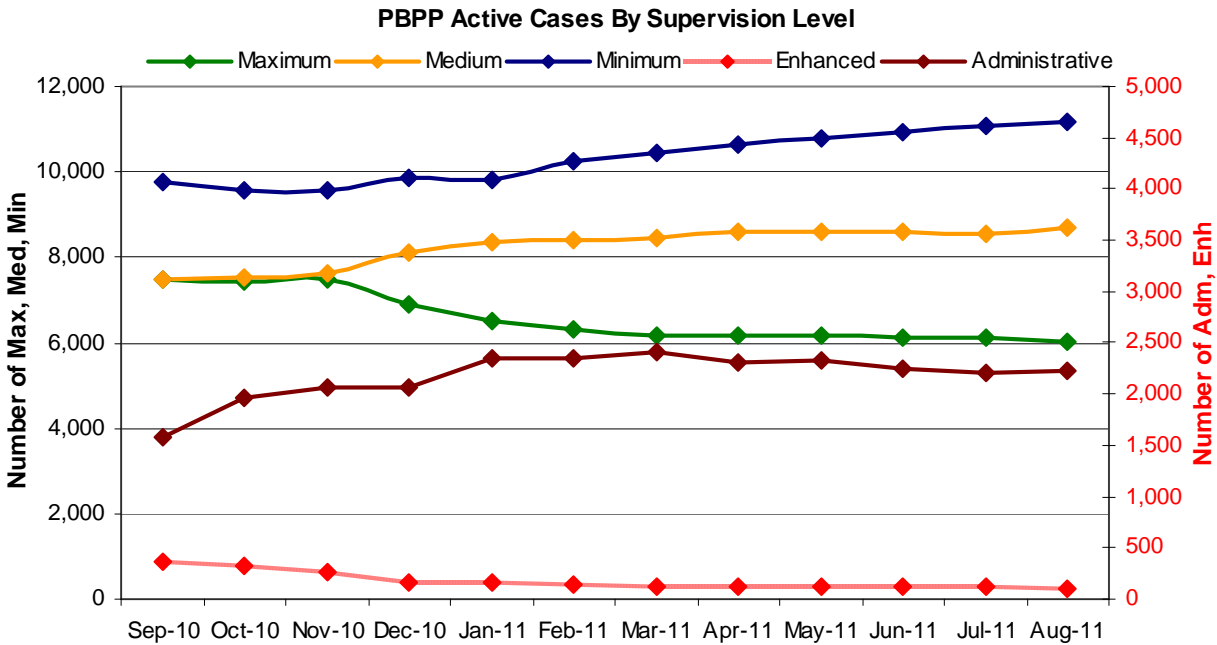
**Supervised State Sentence Cases**

■ Total State Sentence Cases    ■ State Prison Cases    ■ County Prison Cases    ■ Boot Camp Cases



**Table 4**  
**SUPERVISED POPULATION BY GRADE OF SUPERVISION and REGION / DISTRICT**  
**August 2011**

Region / District	Reporting							Non-Reporting		Total Population
	Enhanced	Maximum	Medium	Minimum	ADM / SPC	Not Classified	Subtotal	Absconder	Detainees	
Chester	4	270	739	975	352	13	2,353	56	375	2,784
Philadelphia	6	1,495	2,076	3,346	406	78	7,407	462	1,737	9,606
<b>Eastern Region</b>	<b>10</b>	<b>1,765</b>	<b>2,815</b>	<b>4,321</b>	<b>758</b>	<b>91</b>	<b>9,760</b>	<b>518</b>	<b>2,112</b>	<b>12,390</b>
Allentown	17	867	834	1,295	240	13	3,266	163	645	4,074
Harrisburg	11	880	1,189	1,300	402	33	3,815	156	834	4,805
Scranton	18	306	428	690	147	3	1,592	39	271	1,902
Williamsport	0	94	310	333	123	0	860	11	121	992
<b>Central Region</b>	<b>46</b>	<b>2,147</b>	<b>2,761</b>	<b>3,618</b>	<b>912</b>	<b>49</b>	<b>9,533</b>	<b>369</b>	<b>1,871</b>	<b>11,773</b>
Altoona	3	293	488	411	91	0	1,286	17	223	1,526
Mercer	6	298	907	1,417	180	1	2,809	64	332	3,205
Erie	9	253	471	516	146	1	1,396	41	167	1,604
Pittsburgh	36	1,270	1,245	907	130	2	3,590	131	763	4,484
<b>Western Region</b>	<b>54</b>	<b>2,114</b>	<b>3,111</b>	<b>3,251</b>	<b>547</b>	<b>4</b>	<b>9,081</b>	<b>253</b>	<b>1,485</b>	<b>10,819</b>
<b>Total</b>	<b>110</b>	<b>6,026</b>	<b>8,687</b>	<b>11,190</b>	<b>2,217</b>	<b>144</b>	<b>28,374</b>	<b>1,140</b>	<b>5,468</b>	<b>34,982</b>
<b>Percent of Total</b>	<b>&lt;1%</b>	<b>17%</b>	<b>25%</b>	<b>32%</b>	<b>6%</b>	<b>1%</b>	<b>81%</b>	<b>3%</b>	<b>16%</b>	<b>100%</b>



**Table 5**  
**SUPERVISED POPULATION BY GENDER, RACE and REGION / DISTRICT**  
**August 2011**

Region / District	Male					Female					% Male	Total Population
	White	Black	Hispanic	Other <sup>1</sup>	Total	White	Black	Hispanic	Other <sup>1</sup>	Total		
Chester	1,138	1,244	114	30	2,526	177	73	3	5	258	91%	2,784
Philadelphia	1,264	6,345	1,175	155	8,939	185	397	77	8	667	93%	9,606
<b>EASTERN REGION</b>	<b>2,402</b>	<b>7,589</b>	<b>1,289</b>	<b>185</b>	<b>11,465</b>	<b>362</b>	<b>470</b>	<b>80</b>	<b>13</b>	<b>925</b>	<b>93%</b>	<b>12,390</b>
Allentown	1,856	802	956	43	3,657	266	76	64	11	417	90%	4,074
Harrisburg	2,124	1,526	537	41	4,228	382	140	46	9	577	88%	4,805
Scranton	1,187	351	105	21	1,664	202	27	7	2	238	87%	1,902
Williamsport	680	94	11	2	787	176	22	5	2	205	79%	992
<b>CENTRAL REGION</b>	<b>5,847</b>	<b>2,773</b>	<b>1,609</b>	<b>107</b>	<b>10,336</b>	<b>1,026</b>	<b>265</b>	<b>122</b>	<b>24</b>	<b>1,437</b>	<b>88%</b>	<b>11,773</b>
Altoona	1,078	136	7	15	1,236	274	14	1	1	290	81%	1,526
Mercer	2,142	373	3	11	2,529	601	69	2	4	676	79%	3,205
Erie	948	355	58	8	1,369	186	43	3	3	235	85%	1,604
Pittsburgh	1,930	1,971	41	16	3,958	362	155	4	5	526	88%	4,484
<b>WESTERN REGION</b>	<b>6,098</b>	<b>2,835</b>	<b>109</b>	<b>50</b>	<b>9,092</b>	<b>1,423</b>	<b>281</b>	<b>10</b>	<b>13</b>	<b>1,727</b>	<b>84%</b>	<b>10,819</b>
<b>TOTAL</b>	<b>14,347</b>	<b>13,197</b>	<b>3,007</b>	<b>342</b>	<b>30,893</b>	<b>2,811</b>	<b>1,016</b>	<b>212</b>	<b>50</b>	<b>4,089</b>	<b>88%</b>	<b>34,982</b>

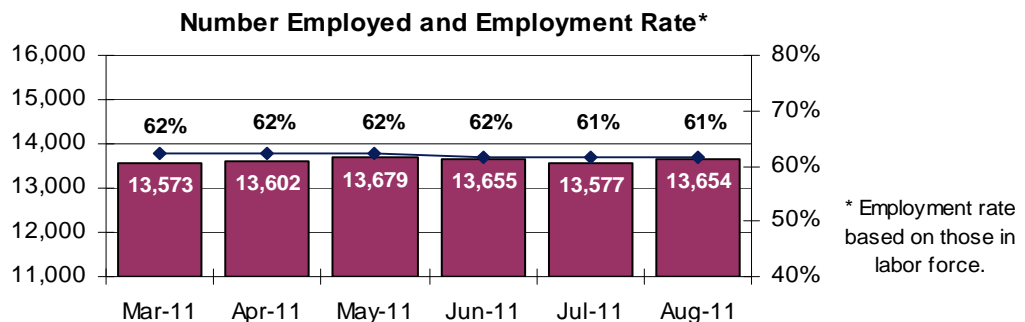
<sup>1</sup> "Other" includes Asian, Pacific Islander, Indian (Native American and Native Alaskan), and cases not elsewhere classified.

**Table 6**  
**SUPERVISED POPULATION BY EMPLOYMENT STATUS and REGION / DISTRICT**  
**August 2011**

Region / District	In Labor Force				Not In Labor Force					Total Population
	Employed Part Time	Employed Full Time	Unemployed	Employment Rate	Unable to Work <sup>2</sup>	Student	Unearned Income <sup>3</sup>	Unknown	Non-Reporting	
Chester	128	1,192	699	65%	228	22	83	1	431	2,784
Philadelphia	457	2,498	2,981	50%	827	140	503	1	2,199	9,606
<b>EASTERN REGION</b>	<b>585</b>	<b>3,690</b>	<b>3,680</b>	<b>54%</b>	<b>1,055</b>	<b>162</b>	<b>586</b>	<b>2</b>	<b>2,630</b>	<b>12,390</b>
Allentown	243	1,535	521	77%	614	62	291	0	808	4,074
Harrisburg	175	1,686	1,457	56%	293	33	168	3	990	4,805
Scranton	51	909	303	76%	134	21	173	1	310	1,902
Williamsport	85	450	179	75%	60	13	73	0	132	992
<b>CENTRAL REGION</b>	<b>554</b>	<b>4,580</b>	<b>2,460</b>	<b>68%</b>	<b>1,101</b>	<b>129</b>	<b>705</b>	<b>4</b>	<b>2,240</b>	<b>11,773</b>
Altoona	146	510	310	68%	105	23	191	1	240	1,526
Mercer	284	912	904	57%	404	28	275	2	396	3,205
Erie	135	542	302	69%	201	28	185	3	208	1,604
Pittsburgh	239	1,477	897	66%	667	59	251	0	894	4,484
<b>WESTERN REGION</b>	<b>804</b>	<b>3,441</b>	<b>2,413</b>	<b>64%</b>	<b>1,377</b>	<b>138</b>	<b>902</b>	<b>6</b>	<b>1,738</b>	<b>10,819</b>
<b>TOTAL</b>	<b>1,943</b>	<b>11,711</b>	<b>8,553</b>	<b>61%</b>	<b>3,533</b>	<b>429</b>	<b>2,193</b>	<b>12</b>	<b>6,608</b>	<b>34,982</b>

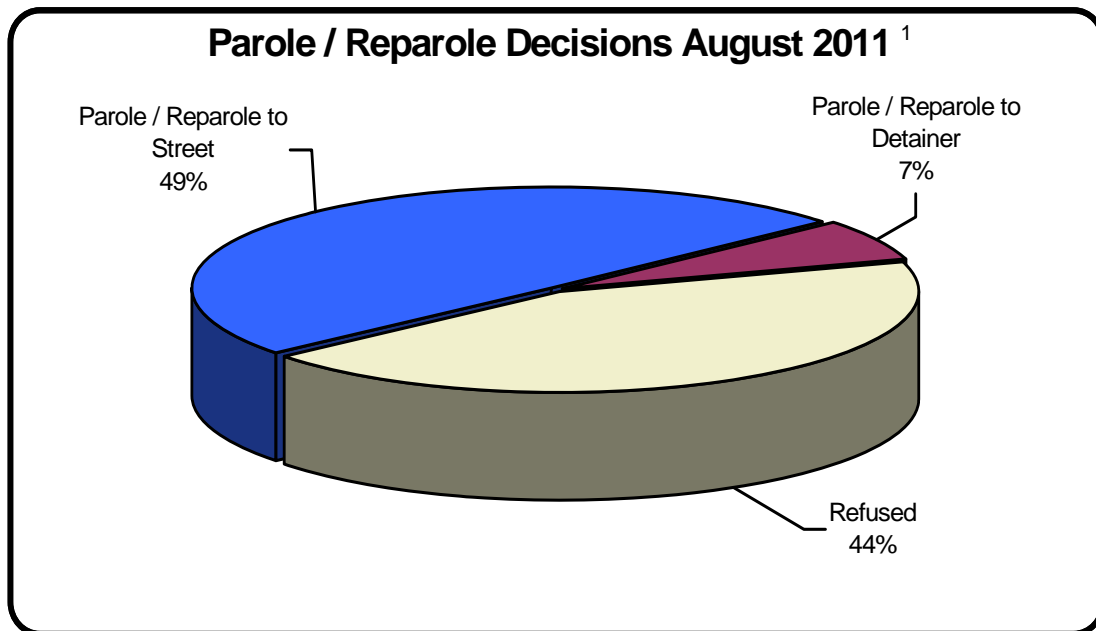
<sup>2</sup> Offender is unable to work due to a physical or mental disability, is a care provider, attends inpatient treatment, etc.

<sup>3</sup> Offender collects welfare assistance, workmen's compensation, monthly pension, Social Security, disability payments, etc.



**Table 7**  
**BOARD DECISIONS**  
**August 2011**

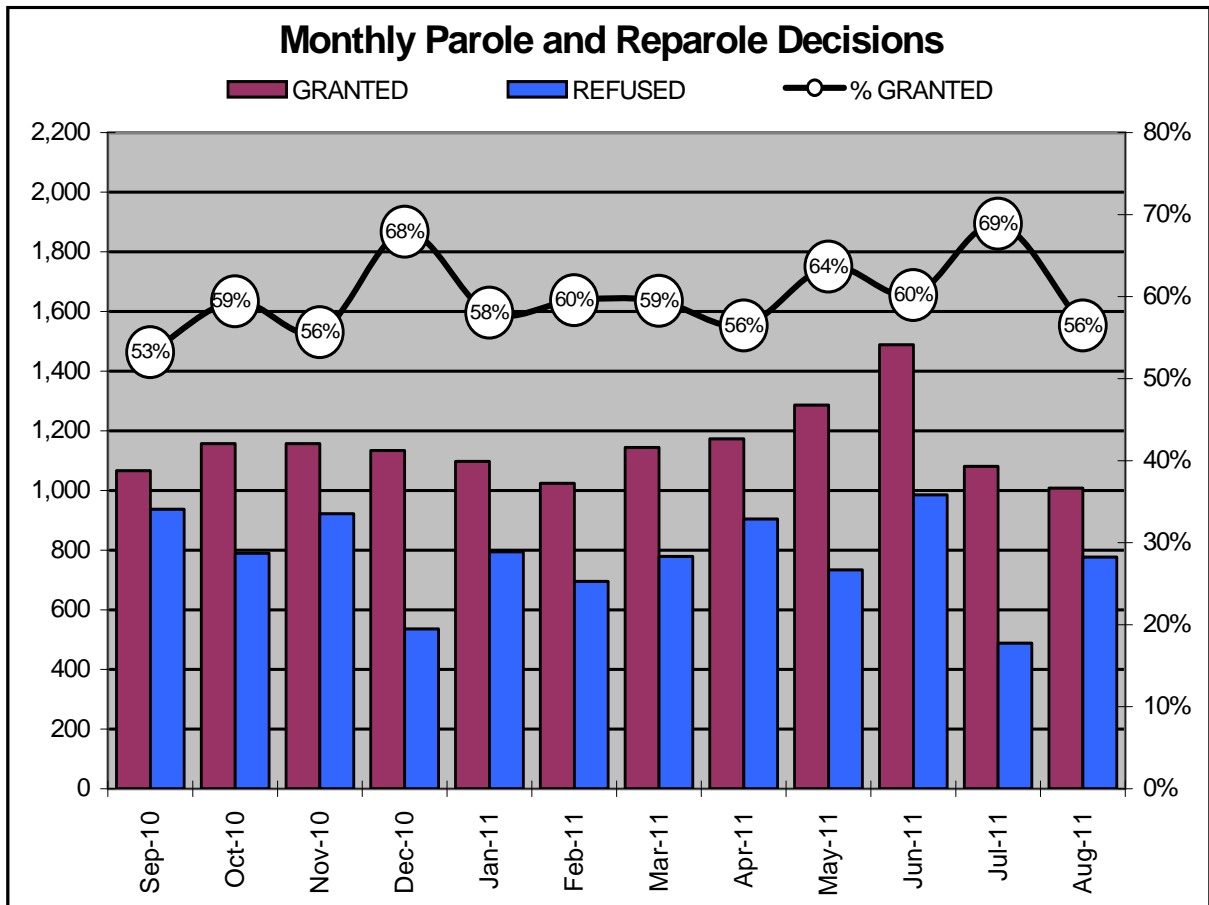
Type of Decision	Total
Parole / Reparole to Street	886
Parole / Reparole to Detainer	122
Refused	777
<b>Total Considered</b>	<b>1,785</b>
Recommitments as TPV	458
Recommitments as CPV	204
Recommitments as CPV and TPV	27
<b>Total Recommitments</b>	<b>689</b>
Refer to Prior Action	96
Other Decisions	871
<b>Total Decisions</b>	<b>3,441</b>



<sup>1</sup> The 56% does not necessarily reflect the overall parole rate, but rather is the calculated percent of parole decisions for the total number of Board Actions produced during this period of time.

**Table 8**  
**MONTHLY PAROLE and REPAROLE DECISIONS**  
**August 2011**

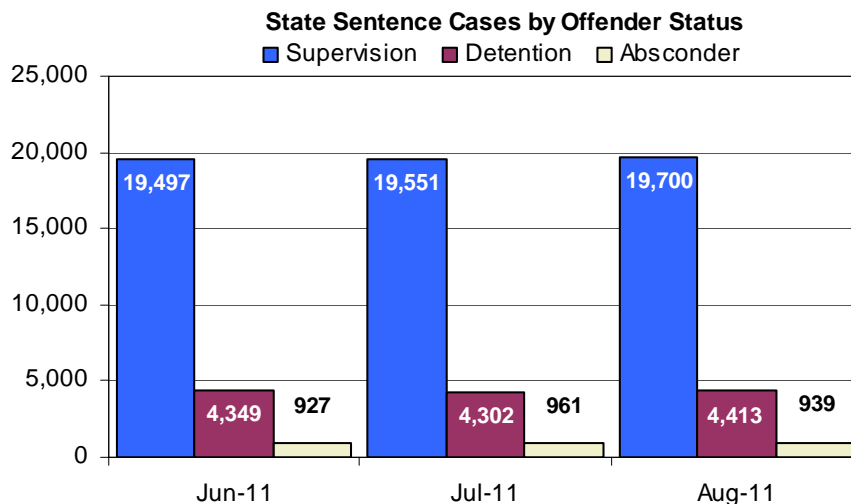
MONTH-YEAR	GRANTED	REFUSED	CONSIDERED	% GRANTED
Sep-10	1,066	937	2,003	53%
Oct-10	1,157	790	1,947	59%
Nov-10	1,157	922	2,079	56%
Dec-10	1,134	536	1,670	68%
Jan-11	1,098	794	1,892	58%
Feb-11	1,024	695	1,719	60%
Mar-11	1,144	779	1,923	59%
Apr-11	1,173	904	2,077	56%
May-11	1,286	734	2,020	64%
Jun-11	1,489	985	2,474	60%
Jul-11	1,081	488	1,569	69%
Aug-11	1,008	777	1,785	56%
<b>Monthly Average Over 12 Months</b>	<b>1,151</b>	<b>778</b>	<b>1,930</b>	<b>60%</b>





Offender Status - August 2011					
Status	State Prison	County Prison	County Sentence	Other States Cases	Total
Supervision	18,340	1,360	5,731	2,943	28,374
Absconder	899	40	201	0	1,140
Detention	4,146	267	915	140	5,468
<b>Total</b>	<b>23,385</b>	<b>1,667</b>	<b>6,847</b>	<b>3,083</b>	<b>34,982</b>

PBPP Monthly Population Profile						
Offender Status	Mar-11	Apr-11	May-11	Jun-11	Jul-11	Aug-11
<b>State sentence from state institution</b>	<b>22,925</b>	<b>22,773</b>	<b>22,992</b>	<b>23,128</b>	<b>23,155</b>	<b>23,385</b>
<i>Supervision</i>	17,773	17,858	18,040	18,165	18,205	18,340
<i>Absconder</i>	862	878	869	890	921	899
<i>Detention</i>	4,290	4,037	4,083	4,073	4,029	4,146
<b>State sentence from county prison</b>	<b>1,657</b>	<b>1,668</b>	<b>1,679</b>	<b>1,645</b>	<b>1,659</b>	<b>1,667</b>
<i>Supervision</i>	1,333	1,354	1,365	1,332	1,346	1,360
<i>Absconder</i>	38	35	37	37	40	40
<i>Detention</i>	286	279	277	276	273	267
<b>County sentence Prob &amp; Parole</b>	<b>6,822</b>	<b>6,857</b>	<b>6,840</b>	<b>6,851</b>	<b>6,802</b>	<b>6,847</b>
<i>Supervision</i>	5,744	5,777	5,715	5,733	5,711	5,731
<i>Absconder</i>	192	187	181	180	194	201
<i>Detention</i>	886	893	944	938	897	915
<b>Other state's sentence Prob &amp; Parole</b>	<b>3,163</b>	<b>3,139</b>	<b>3,154</b>	<b>3,121</b>	<b>3,105</b>	<b>3,083</b>
<i>Supervision</i>	3,012	2,979	2,996	2,983	2,958	2,943
<i>Absconder</i>	0	0	0	1	0	0
<i>Detention</i>	151	160	158	137	147	140
<b>PBPP Population end of month</b>	<b>34,567</b>	<b>34,437</b>	<b>34,665</b>	<b>34,745</b>	<b>34,721</b>	<b>34,982</b>



**PBPP Population Breakdown By Place of Incarceration/Jurisdiction – August 2011**

<b>Monthly Count of Grant and Refuse Board Actions</b>							
Type of Decision	County Prison			State Prison			All Grant/Refuse Board Actions
	Grant	Refuse	Total	Grant	Refuse	Total	
September 2010	56	32	88	1,010	905	1,915	<b>2,003</b>
October 2010	56	22	78	1,101	768	1,869	<b>1,947</b>
November 2010	63	35	98	1,094	887	1,981	<b>2,079</b>
December 2010	47	33	80	1,087	503	1,590	<b>1,670</b>
January 2011	48	11	59	1,050	783	1,833	<b>1,892</b>
February 2011	48	29	77	976	666	1,642	<b>1,719</b>
March 2011	54	32	86	1,090	747	1,837	<b>1,923</b>
April 2011	45	38	83	1,128	866	1,994	<b>2,077</b>
May 2011	56	23	79	1,230	711	1,942	<b>2,020</b>
June 2011	52	24	76	1,437	961	2,398	<b>2,474</b>
July 2011	48	17	65	1,033	471	1,504	<b>1,569</b>
August 2011	51	28	79	957	749	1,706	<b>1,785</b>
<b>2011 Total</b>	<b>402</b>	<b>202</b>	<b>604</b>	<b>8,901</b>	<b>5,954</b>	<b>14,856</b>	<b>15,459</b>

<b>Additions and Deletions</b>						
	Mar-11	Apr-11	May-11	Jun-11	Jul-11	Aug-11
<b>Total Additions</b>	<b>1,613</b>	<b>1,325</b>	<b>1,417</b>	<b>1,418</b>	<b>1,282</b>	<b>1,530</b>
State sentence - State Prison	1,065	845	953	991	831	1,022
State sentence - County Prison	90	80	59	44	71	73
County sentence Prob & Parole	289	268	244	247	231	302
Other state's sentence	169	132	161	136	149	133
<b>Total Deletions</b>	<b>1,244</b>	<b>1,438</b>	<b>1,177</b>	<b>1,337</b>	<b>1,287</b>	<b>1,254</b>
<b>State sentence - State Prison</b>	<b>643</b>	<b>962</b>	<b>707</b>	<b>812</b>	<b>759</b>	<b>749</b>
<i>Technical Violator</i>	165	324	201	257	239	232
<i>Convicted Violator</i>	95	230	155	174	175	138
<i>Successful Completion</i>	357	379	325	356	327	347
<i>Other Case Closure</i>	26	29	26	25	18	32
<b>State sentence - County Prison</b>	<b>52</b>	<b>66</b>	<b>31</b>	<b>75</b>	<b>57</b>	<b>57</b>
<i>Technical Violator</i>	11	19	6	12	15	11
<i>Convicted Violator</i>	8	12	5	11	7	11
<i>Successful Completion</i>	30	33	16	47	30	30
<i>Other Case Closure</i>	3	2	4	5	5	5
<b>County sentence Prob &amp; Parole</b>	<b>376</b>	<b>253</b>	<b>295</b>	<b>281</b>	<b>304</b>	<b>293</b>
<i>Technical Violator</i>	51	29	32	38	46	32
<i>Convicted Violator</i>	35	30	27	30	35	33
<i>Successful Completion</i>	200	129	146	136	155	134
<i>Other Case Closure</i>	90	65	90	77	68	94
<b>Other state's sentence</b>	<b>173</b>	<b>157</b>	<b>144</b>	<b>169</b>	<b>167</b>	<b>155</b>
<i>Technical Violator</i>	3	3	4	1	0	2
<i>Convicted Violator</i>	2	2	7	1	4	2
<i>Successful Completion</i>	72	69	51	59	84	56
<i>Other Case Closure</i>	96	83	82	108	79	95
<b>PBPP Population end of month</b>	<b>34,567</b>	<b>34,437</b>	<b>34,665</b>	<b>34,745</b>	<b>34,721</b>	<b>34,982</b>