

COMMONWEALTH OF PENNSYLVANIA

Board of Probation and Parole

MONTHLY PROGRAM REPORT

July 2010



Edward G. Rendell
Governor

Catherine C. McVey
Chairman

C. James Fox
Member

Jeffrey R. Imboden
Member

Benjamin A. Martinez
Member

Judith E. Viglione
Member

Michael L. Green
Member

Matthew T. Mangino, Esq
Member

John R. Tuttle
Member

Lloyd A. White
Member

Carol Lavery
Victim Advocate

PBPP
AN EQUAL OPPORTUNITY EMPLOYER

Published August 9, 2010 by the PBPP Research and Development Division

Copyright © 2010 by the Pennsylvania Board of Probation and Parole. All rights reserved.

**Table 1
WORKLOAD AND POPULATION CHANGES BY REGION / DISTRICT
July 2010**

REGION / DISTRICT	Beginning Fiscal Yr ¹ July 2010	Current Month Population	Fiscal YTD Index	Additions	Deletions		Number of Agents ²	Average Workload	Total Workload
					Recommits/ Revocations	Other Deletions			
CHESTER	2,583	2,595	100	98	25	63	37	123	4,544
PHILADELPHIA	9,095	9,262	102	435	72	220	126	123	15,519
EASTERN REGION	11,678	11,857	102	533	97	283	163	123	20,063
ALLENTOWN	3,685	3,675	100	165	70	75	53	124	6,592
HARRISBURG	4,161	4,240	102	205	52	72	58	134	7,781
SCRANTON	1,766	1,778	101	110	19	76	28	121	3,399
WILLIAMSPORT	918	931	101	40	13	19	15	122	1,826
CENTRAL REGION	10,530	10,624	101	520	154	242	154	127	19,598
ALTOONA	1,399	1,409	101	47	17	24	22	128	2,823
MERCER	3,180	3,199	101	143	33	98	45	132	5,955
ERIE	1,471	1,486	101	64	15	27	22	126	2,777
PITTSBURGH	4,120	4,198	102	191	42	72	66	124	8,176
WESTERN REGION	10,170	10,292	101	445	107	221	155	127	19,731
TOTAL Supervised	32,378	32,773	101	1,498	358	746	472	126	59,391

¹ effective June 30

² Filled agent positions

PA Offenders in Other States	2,760	2,778	101	69	6	44
------------------------------	--------------	--------------	------------	-----------	----------	-----------

Population - Retrospective Year View

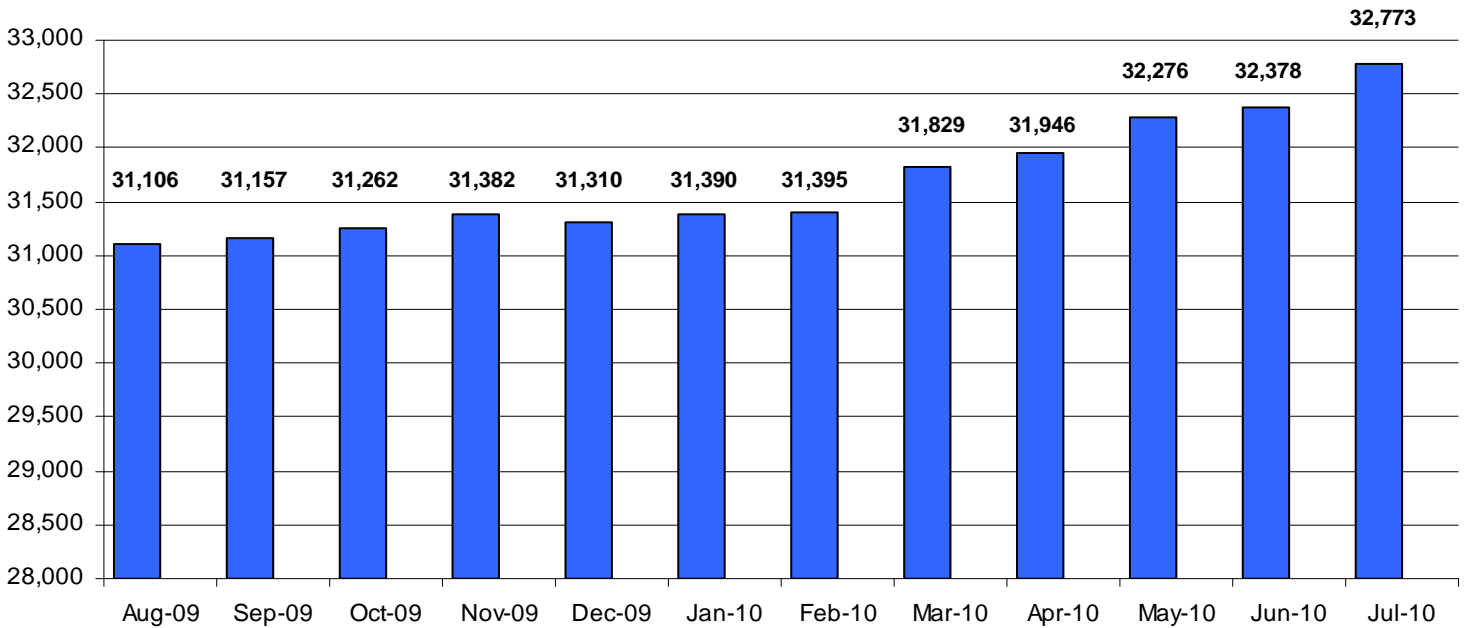
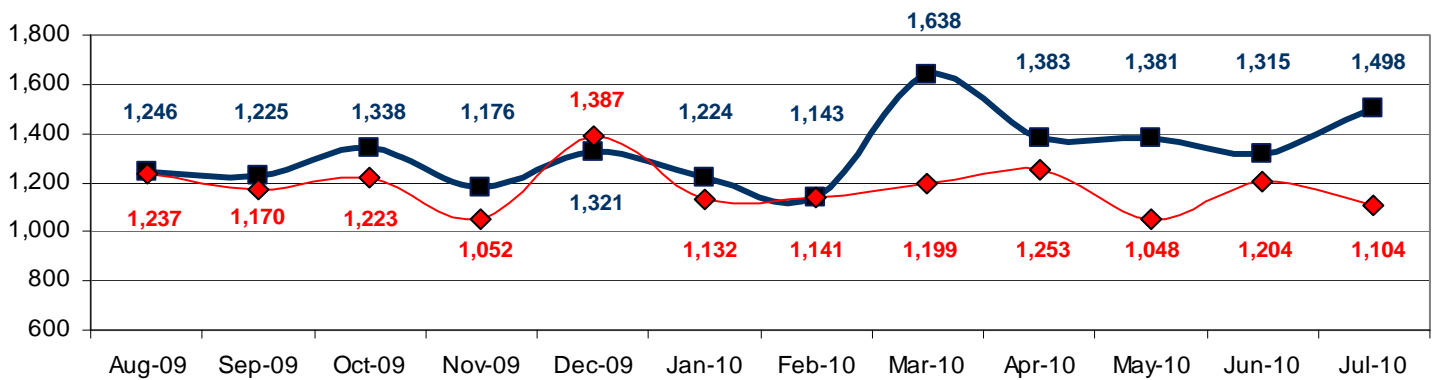


Table 2
SUPERVISED POPULATION ADDITIONS AND DELETIONS
July 2010

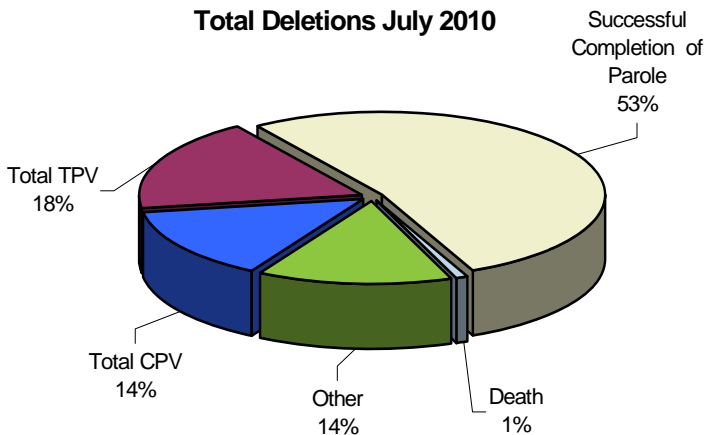
Population Additions and Deletions	Parole	Reparole	Special County Probation	Special County Parole	Other States' Probation	Other States' Parole	Monthly Total	Fiscal YTD Total
ADDITIONS	861	200	220	66	123	28	1,498	1,498
DELETIONS-RECOMMITMENTS								
<i>Convicted Parole Violator</i>								
State Corrections	105	21	3	0	0	0	129	129
County Corrections	4	1	13	4	1	0	23	23
Other States	0	0	0	0	4	2	6	6
Total Convicted Parole Violator	109	22	16	4	5	2	158	158
<i>Technical Parole Violator</i>								
State Corrections	107	42	3	0	0	0	152	152
County Corrections	10	2	26	7	0	0	45	45
Other States	0	0	0	0	3	0	3	3
Total Technical Parole Violator	117	44	29	7	3	0	200	200
TOTAL RECOMMITMENTS	226	66	45	11	8	2	358	358
Deletion Successful Completion	306	61	103	25	69	14	578	578
Deletion Death	5	1	3	0	1	0	10	10
Deletion Other	8	2	56	7	76	9	158	158
TOTAL DELETIONS	545	130	207	43	154	25	1,104	1,104

Population Additions & Deletions-Retrospective Year View

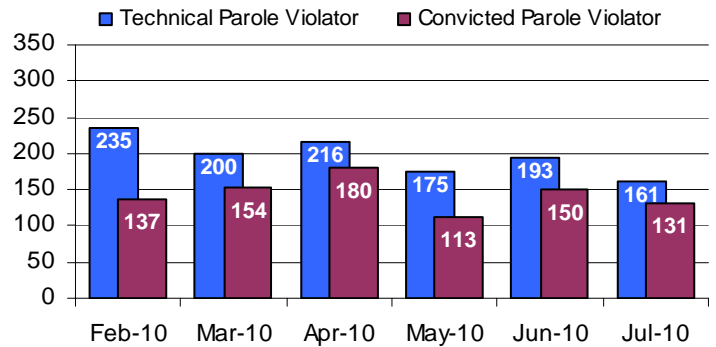
■ ADDITIONS ◆ DELETIONS



Total Deletions July 2010



State Sentence Parole Revocations*

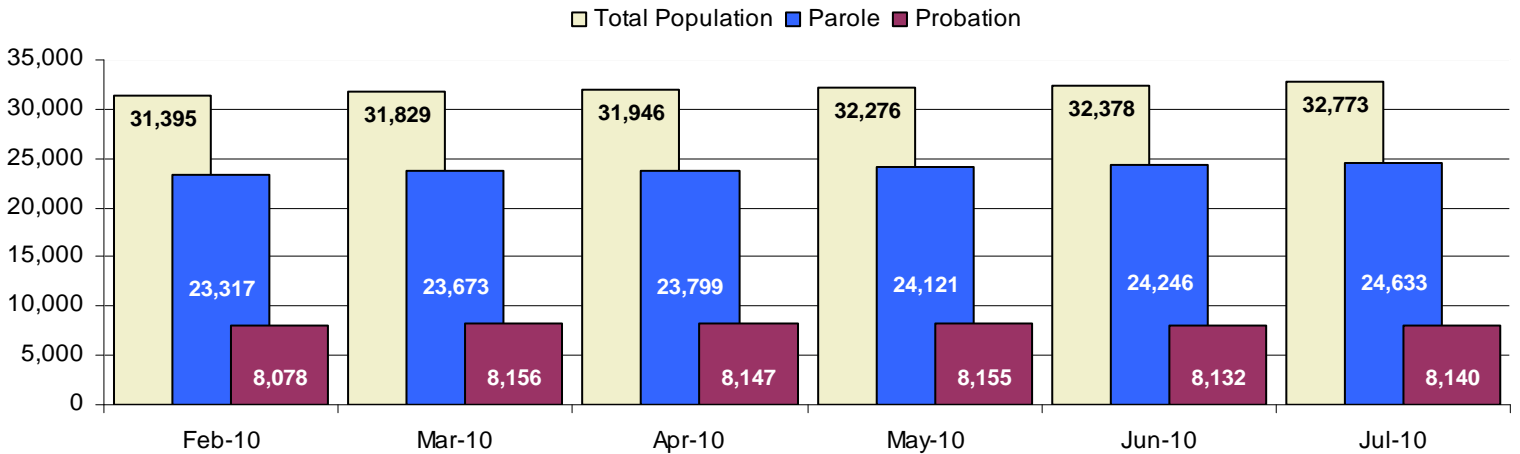


* These revocations represent field case closure records and are dependent on case processing.

Table 3
SUPERVISED POPULATION BY ORIGINATING JURISDICTION and REGION / DISTRICT
July 2010

Region / District	PA Parole State Sentence				County		Other States		Total Population
	State Prisons	Boot Camp	County Prisons	Subtotal	Special Probation	Special Parole	Probation	Parole	
Chester	1,432	59	231	1,722	492	5	317	59	2,595
Philadelphia	6,617	204	374	7,195	1,241	12	670	144	9,262
Eastern Region	8,049	263	605	8,917	1,733	17	987	203	11,857
Allentown	2,301	145	346	2,792	376	5	412	90	3,675
Harrisburg	3,158	217	149	3,524	368	4	283	61	4,240
Scranton	1,026	15	220	1,261	169	1	270	77	1,778
Williamsport	635	19	48	702	105	8	95	21	931
Central Region	7,120	396	763	8,279	1,018	18	1,060	249	10,624
Altoona	800	23	61	884	374	41	89	21	1,409
Mercer	712	21	24	757	1,417	906	90	29	3,199
Erie	1,016	32	103	1,151	189	61	74	11	1,486
Pittsburgh	2,682	216	55	2,953	808	59	301	77	4,198
Western Region	5,210	292	243	5,745	2,788	1,067	554	138	10,292
Total	20,379	951	1,611	22,941	5,539	1,102	2,601	590	32,773
Percent of Total	62%	3%	5%	70%	17%	3%	8%	2%	100%

Parole and Probation Supervised Populations



Supervised State Sentence Cases

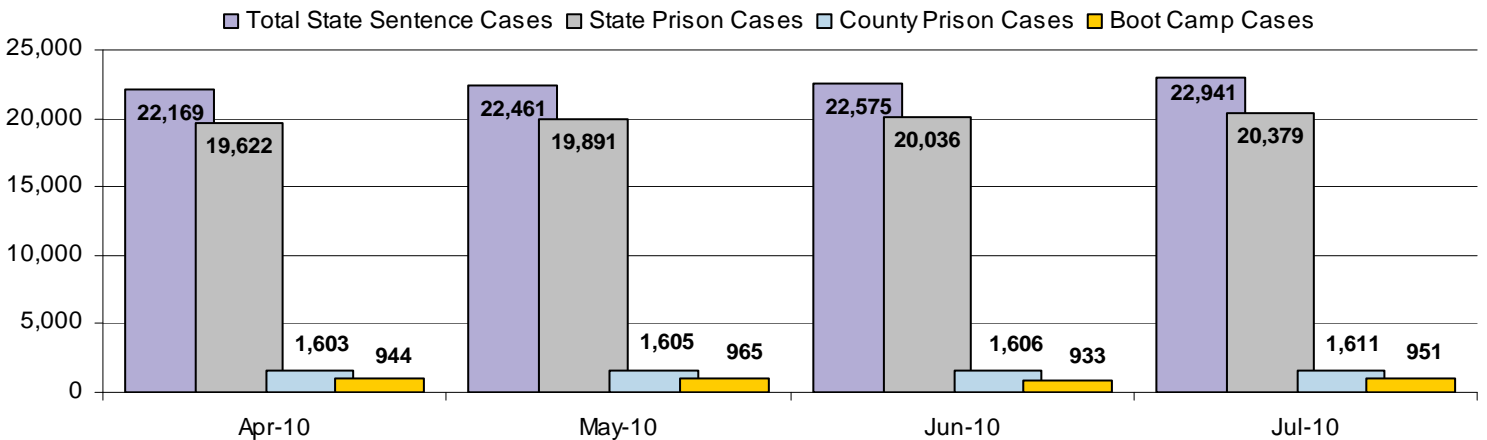


Table 4
SUPERVISED POPULATION BY GRADE OF SUPERVISION and REGION / DISTRICT
July 2010

Region / District	Reporting							Non-Reporting		Total Population
	Enhanced	Maximum	Medium	Minimum	Admin. Parole	Not Classified	Subtotal	Absconder	Detainees	
Chester	14	470	588	855	260	1	2,188	43	364	2,595
Philadelphia	195	2,070	1,717	2,789	205	81	7,057	413	1,792	9,262
Eastern Region	209	2,540	2,305	3,644	465	82	9,245	456	2,156	11,857
Allentown	30	942	730	1,161	167	18	3,048	148	479	3,675
Harrisburg	20	1,133	855	1,154	218	14	3,394	159	687	4,240
Scranton	20	457	373	579	85	14	1,528	32	218	1,778
Williamsport	2	180	251	317	74	1	825	11	95	931
Central Region	72	2,712	2,209	3,211	544	47	8,795	350	1,479	10,624
Altoona	1	322	485	344	51	1	1,204	18	187	1,409
Mercer	0	301	884	1,475	115	1	2,776	65	358	3,199
Erie	6	333	413	491	44	0	1,287	32	167	1,486
Pittsburgh	34	1,481	965	728	88	2	3,298	112	788	4,198
Western Region	41	2,437	2,747	3,038	298	4	8,565	227	1,500	10,292
Total	322	7,689	7,261	9,893	1,307	133	26,605	1,033	5,135	32,773
Percent of Total	1%	23%	22%	30%	4%	<1%	81%	3%	16%	100%

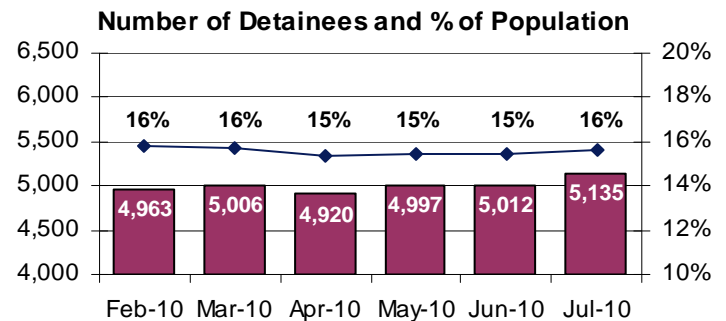
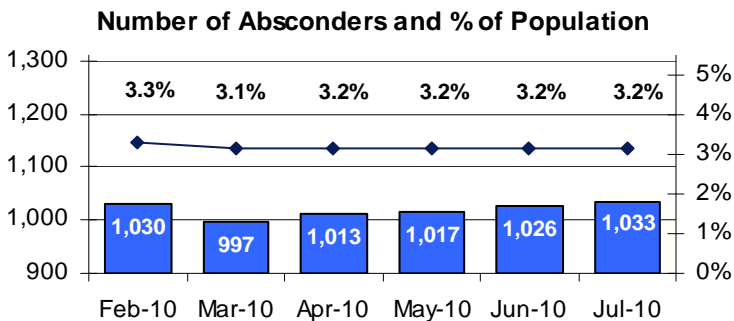
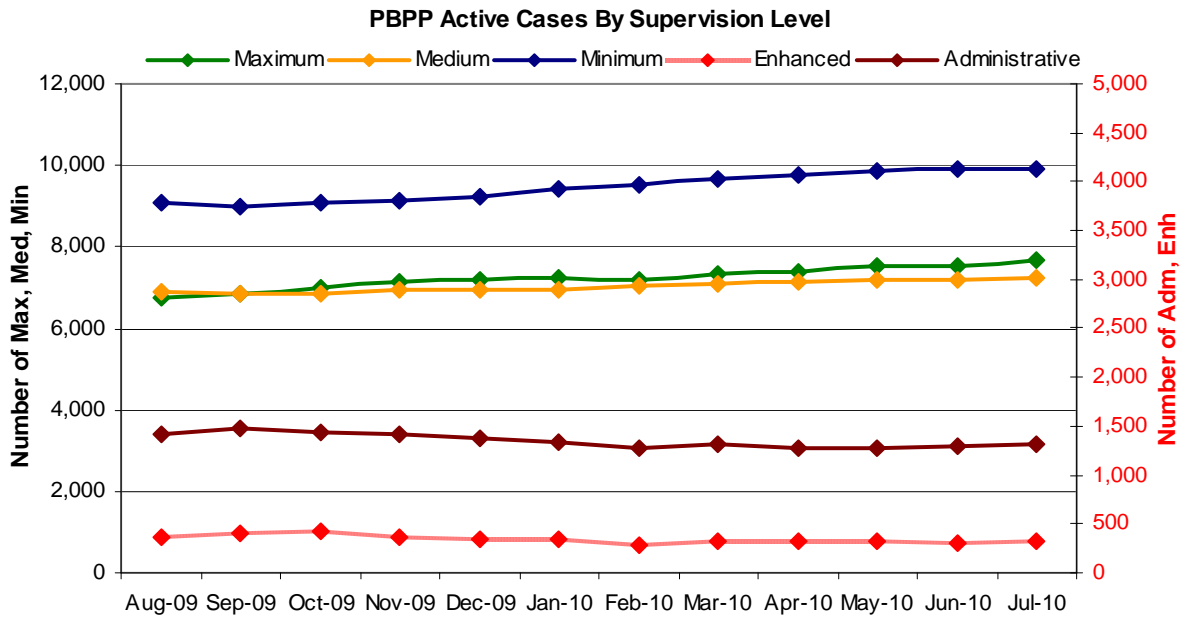


Table 5
SUPERVISED POPULATION BY GENDER, RACE and REGION / DISTRICT
July 2010

Region / District	Male					Female					% Male	Total Population
	White	Black	Hispanic	Other ¹	Total	White	Black	Hispanic	Other ¹	Total		
Chester	1,062	1,171	106	23	2,362	164	63	2	4	233	91%	2,595
Philadelphia	1,181	6,201	1,082	167	8,631	155	383	80	13	631	93%	9,262
EASTERN REGION	2,243	7,372	1,188	190	10,993	319	446	82	17	864	93%	11,857
Allentown	1,658	695	844	65	3,262	244	77	79	13	413	89%	3,675
Harrisburg	1,899	1,372	464	35	3,770	303	113	46	8	470	89%	4,240
Scranton	1,090	322	102	18	1,532	206	26	12	2	246	86%	1,778
Williamsport	639	82	8	3	732	170	26	2	1	199	79%	931
CENTRAL REGION	5,286	2,471	1,418	121	9,296	923	242	139	24	1,328	88%	10,624
Altoona	989	132	7	12	1,140	257	10	1	1	269	81%	1,409
Mercer	2,118	377	12	8	2,515	592	86	2	4	684	79%	3,199
Erie	881	336	53	7	1,277	157	45	4	3	209	86%	1,486
Pittsburgh	1,774	1,890	33	17	3,714	337	144	2	1	484	88%	4,198
WESTERN REGION	5,762	2,735	105	44	8,646	1,343	285	9	9	1,646	84%	10,292
TOTAL	13,291	12,578	2,711	355	28,935	2,585	973	230	50	3,838	88%	32,773

¹ "Other" includes Asian, Pacific Islander, Indian (Native American and Native Alaskan), and cases not elsewhere classified.

Table 6
SUPERVISED POPULATION BY EMPLOYMENT STATUS and REGION / DISTRICT
July 2010

Region / District	In Labor Force				Not In Labor Force					Total Population
	Employed Part Time	Employed Full Time	Unemployed	Employment Rate	Unable to Work ²	Student	Unearned Income ³	Unknown	Non-Reporting	
Chester	87	1,125	636	66%	240	25	71	4	407	2,595
Philadelphia	400	2,682	2,666	54%	763	100	440	6	2,205	9,262
EASTERN REGION	487	3,807	3,302	57%	1,003	125	511	10	2,612	11,857
Allentown	273	1,571	288	86%	564	54	296	2	627	3,675
Harrisburg	174	1,520	1,233	58%	298	29	130	10	846	4,240
Scranton	56	890	288	77%	150	22	122	0	250	1,778
Williamsport	67	418	177	73%	80	20	63	0	106	931
CENTRAL REGION	570	4,399	1,986	71%	1,092	125	611	12	1,829	10,624
Altoona	163	452	268	70%	113	28	177	3	205	1,409
Mercer	305	858	932	56%	415	21	241	4	423	3,199
Erie	110	525	235	73%	192	32	189	4	199	1,486
Pittsburgh	230	1,496	676	72%	604	49	242	1	900	4,198
WESTERN REGION	808	3,331	2,111	66%	1,324	130	849	12	1,727	10,292
TOTAL	1,865	11,537	7,399	64%	3,419	380	1,971	34	6,168	32,773

² Offender is unable to work due to a physical or mental disability, is a care provider, attends inpatient treatment, etc.

³ Offender collects welfare assistance, workmen's compensation, monthly pension, Social Security, disability payments, etc.

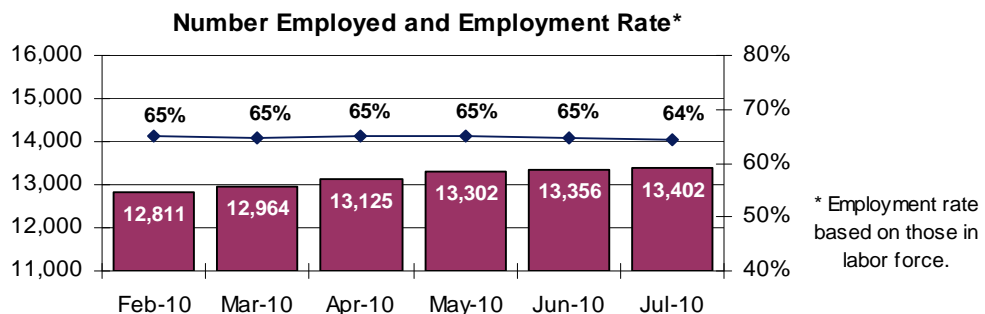
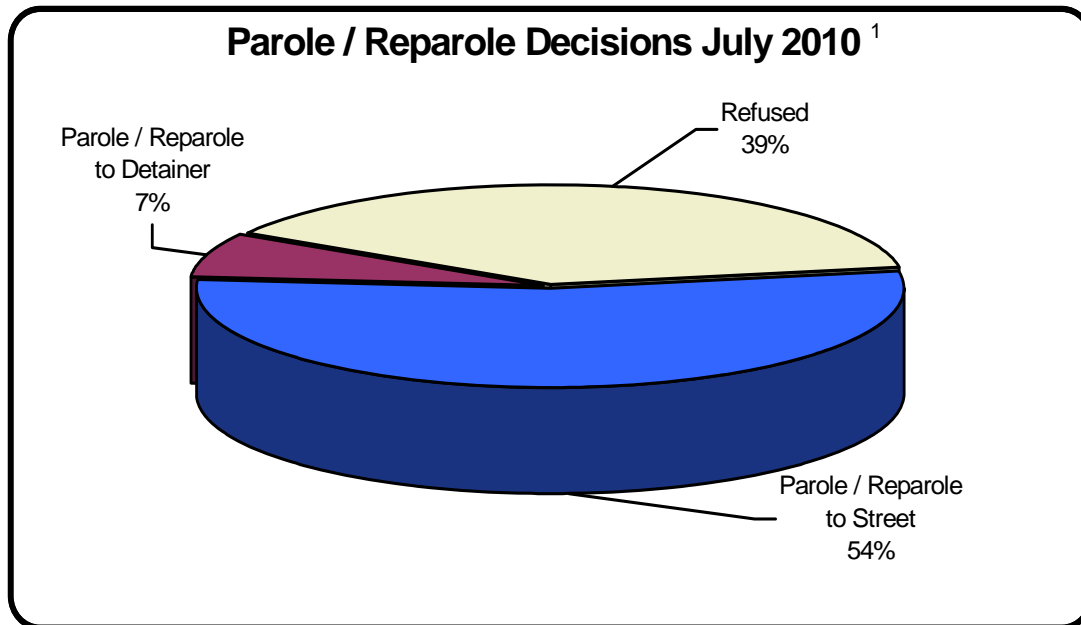


Table 7
BOARD DECISIONS
July 2010

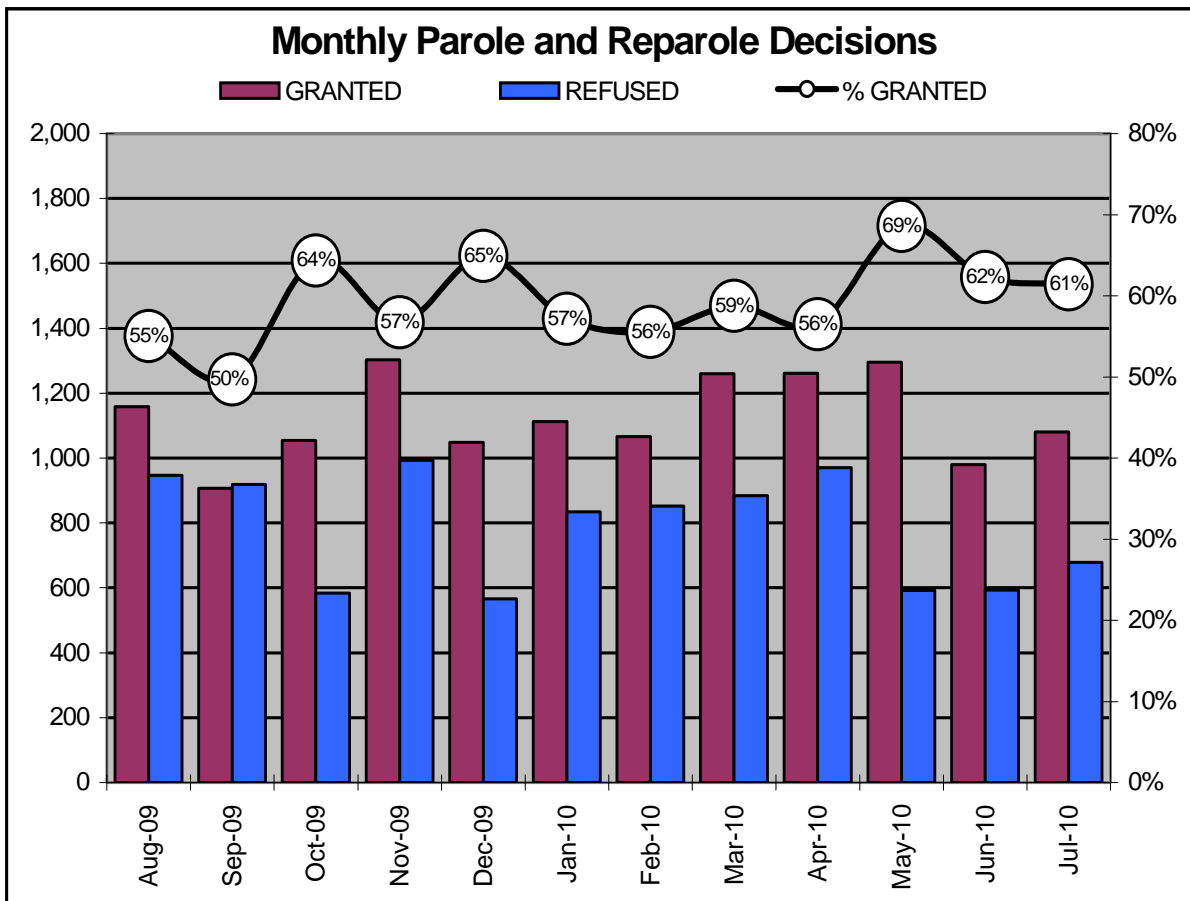
Type of Decision	Total
Parole / Reparole to Street	954
Parole / Reparole to Detainer	126
Refused	679
Total Considered	1,759
Recommitments as TPV	175
Recommitments as CPV	101
Recommitments as CPV and TPV	21
Total Recommitments	297
Refer to Prior Action	78
Other Decisions	594
Total Decisions	2,728



¹The 61% does not necessarily reflect the overall parole rate, but rather is the calculated percent of parole decisions for the total number of Board Actions produced during this period of time.

Table 8
MONTHLY PAROLE and REPAROLE DECISIONS
July 2010

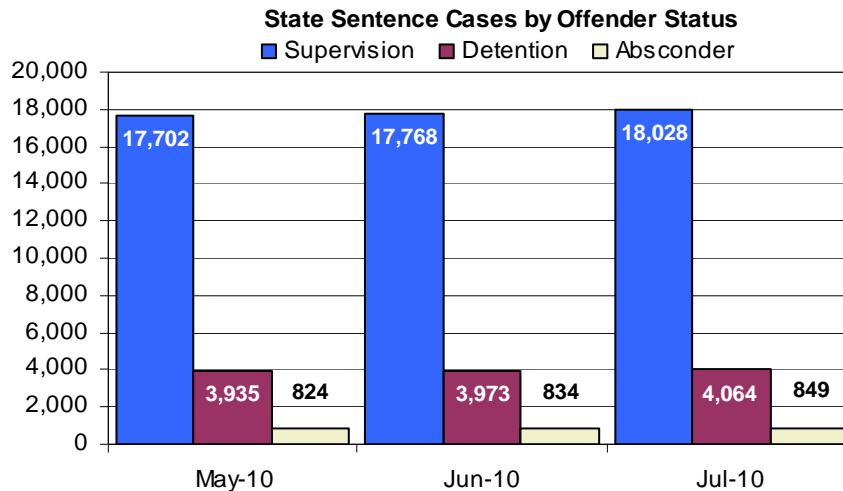
MONTH-YEAR	GRANTED	REFUSED	CONSIDERED	% GRANTED
Aug-09	1,158	947	2,105	55%
Sep-09	907	918	1,825	50%
Oct-09	1,054	584	1,638	64%
Nov-09	1,303	993	2,296	57%
Dec-09	1,048	566	1,614	65%
Jan-10	1,112	834	1,946	57%
Feb-10	1,066	852	1,918	56%
Mar-10	1,260	884	2,144	59%
Apr-10	1,261	971	2,232	56%
May-10	1,295	592	1,887	69%
Jun-10	980	593	1,573	62%
Jul-10	1,080	679	1,759	61%
Monthly Average Over 12 Months	1,127	784	1,911	59%



PBPP Population Breakdown By Place of Incarceration/Jurisdiction – July 2010

Offender Status - July 2010					
Status	State Prison	County Prison	County Sentence	Other States Cases	Total
Supervision	16,748	1,280	5,518	3,059	26,605
Absconder	802	47	184	0	1,033
Detention	3,778	286	939	132	5,135
Total	21,328	1,613	6,641	3,191	32,773

PBPP Monthly Population Profile						
Offender Status	Feb-10	Mar-10	Apr-10	May-10	Jun-10	Jul-10
State sentence from state institution	20,093	20,450	20,566	20,856	20,969	21,330
<i>Supervision</i>	15,709	16,036	16,210	16,419	16,488	16,749
<i>Absconder</i>	792	772	782	777	785	803
<i>Detention</i>	3,592	3,642	3,574	3,660	3,696	3,778
State sentence from county prison	1,600	1,587	1,603	1,605	1,606	1,611
<i>Supervision</i>	1,263	1,269	1,277	1,283	1,280	1,279
<i>Absconder</i>	47	41	45	47	49	46
<i>Detention</i>	290	277	281	275	277	286
County sentence Prob & Parole	6,465	6,541	6,544	6,576	6,588	6,641
<i>Supervision</i>	5,359	5,430	5,427	5,457	5,490	5,518
<i>Absconder</i>	190	183	184	192	192	184
<i>Detention</i>	916	928	933	927	906	939
Other state's sentence Prob & Parole	3,237	3,251	3,233	3,239	3,215	3,191
<i>Supervision</i>	3,071	3,091	3,099	3,103	3,082	3,059
<i>Absconder</i>	1	1	2	1	0	0
<i>Detention</i>	165	159	132	135	133	132
PBPP Population end of month	31,395	31,829	31,946	32,276	32,378	32,773



PBPP Population Breakdown By Place of Incarceration/Jurisdiction – July 2010

Monthly Count of Grant and Refuse Board Actions							
Type of Decision	County Prison			State Prison			All Grant/Refuse Board Actions
	Grant	Refuse	Total	Grant	Refuse	Total	
August 2009	64	36	100	1,094	911	2,005	2,105
September 2009	49	44	93	858	874	1,732	1,825
October 2009	50	18	68	1,004	566	1,570	1,638
November 2009	59	48	107	1,244	945	2,189	2,296
December 2009	51	25	76	997	541	1,538	1,614
January 2010	75	45	120	1,037	789	1,826	1,946
February 2010	71	41	112	995	811	1,806	1,918
March 2010	70	35	105	1,190	849	2,039	2,144
April 2010	53	36	89	1,208	935	2,143	2,232
May 2010	63	28	91	1,232	564	1,796	1,887
June 2010	42	25	67	938	568	1,506	1,573
July 2010	58	31	89	1,022	648	1,670	1,759
2010 Total	432	241	673	7,622	5,164	12,786	13,459

Additions and Deletions						
	Feb-10	Mar-10	Apr-10	May-10	Jun-10	Jul-10
Total Additions	1,143	1,638	1,383	1,381	1,315	1,498
State sentence - State Prison	718	1,041	855	889	822	996
State sentence - County Prison	43	66	80	55	71	65
County sentence Prob & Parole	248	359	278	281	269	286
Other state's sentence	134	172	170	156	153	151
Total Deletions	1,141	1,199	1,253	1,048	1,204	1,104
State sentence - State Prison	683	652	720	577	680	620
<i>Technical Violator</i>	224	188	203	160	182	149
<i>Convicted Violator</i>	129	143	172	105	142	126
<i>Successful Completion</i>	311	290	317	289	335	330
<i>Other Case Closure</i>	19	31	28	23	21	15
State sentence - County Prison	55	66	65	55	71	55
<i>Technical Violator</i>	11	12	13	15	11	12
<i>Convicted Violator</i>	8	11	8	8	8	5
<i>Successful Completion</i>	35	43	42	31	52	37
<i>Other Case Closure</i>	1	0	2	1	0	1
County sentence Prob & Parole	260	304	281	267	272	250
<i>Technical Violator</i>	31	34	27	43	33	36
<i>Convicted Violator</i>	18	29	31	26	29	20
<i>Successful Completion</i>	146	168	136	123	118	128
<i>Other Case Closure</i>	65	73	87	75	92	66
Other state's sentence	143	177	187	149	181	179
<i>Technical Violator</i>	4	2	2	2	3	3
<i>Convicted Violator</i>	1	4	1	3	2	7
<i>Successful Completion</i>	77	60	58	61	58	83
<i>Other Case Closure</i>	61	111	126	83	118	86
PBPP Population end of month	31,395	31,829	31,946	32,276	32,378	32,773