

# COMMONWEALTH OF PENNSYLVANIA

## Board of Probation and Parole

### MONTHLY STATISTICAL REPORT

July 1999



**Tom Ridge**  
Governor

William F. Ward  
Chairman

Allen Castor  
Member

Benjamin Martinez  
Member

Barbara K. Descher  
Member

Nicholas P. Muller  
Member

Richard A. Kipp  
Member

Sean R. Ryan  
Member

Gary R. Lucht  
Member

Michael M. Webster  
Member

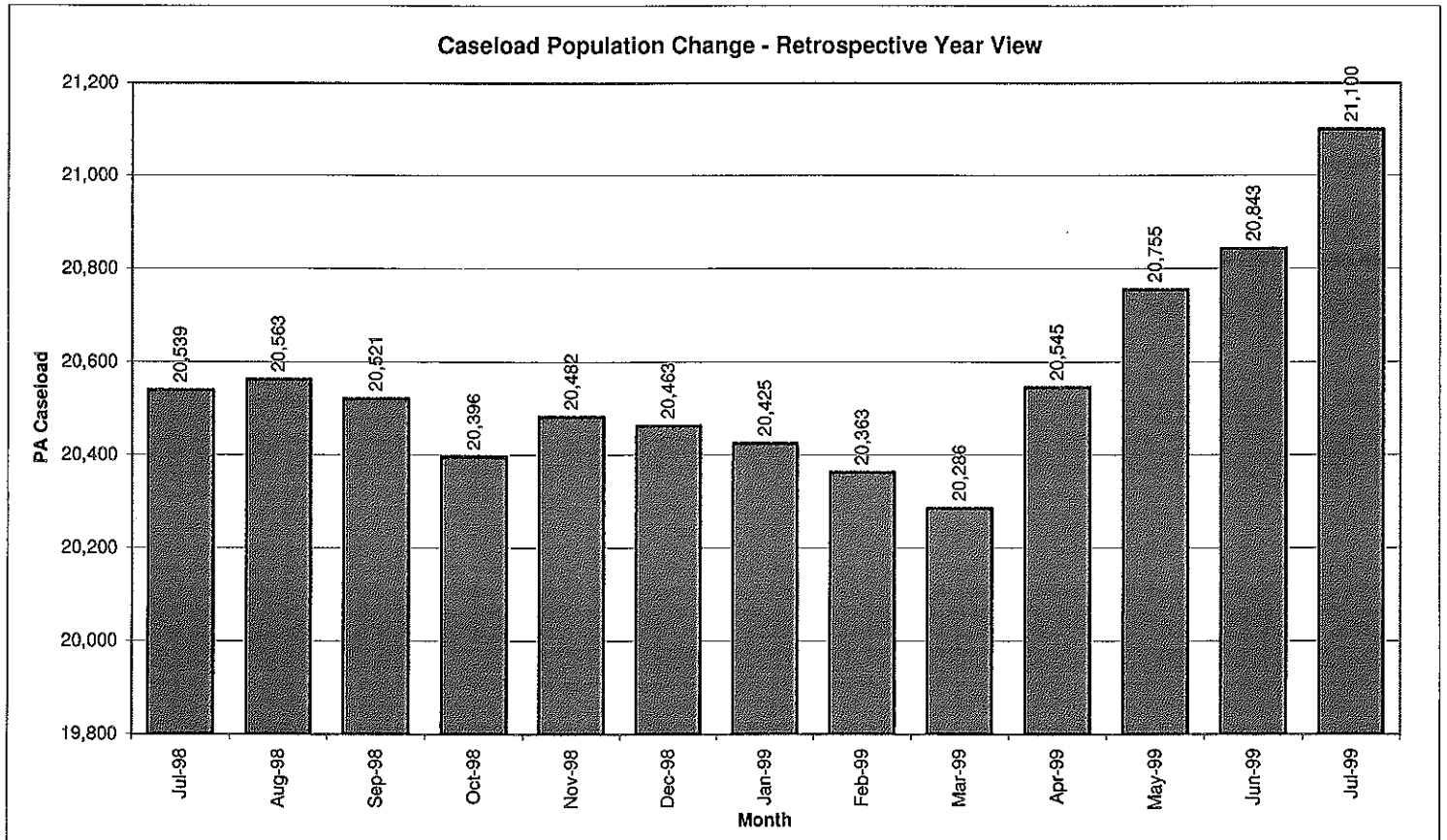
Mary A. Achilles  
Victim Advocate

pbpp  
AN EQUAL OPPORTUNITY EMPLOYER

**Table 1**  
**CASELOAD, WORKLOAD, AND POPULATION CHANGES BY DISTRICT**  
**July 1999**

Type of Cases	Beginning FY Cases 7/1/99	Current Month Cases	Fiscal YTD Index	Additions	Deletions		Number of Agents <sup>1</sup>	Average Caseload	Average Workload	Total Workload <sup>2</sup>
					Recommits/ Revocations	Other Deletions				
CHESTER	1,766	1,833	104	47	38	80	32	57	119	3,793
PHILADELPHIA	6,102	6,175	101	149	95	153	102	61	121	12,350
<b>EASTERN REGION</b>	<b>7,868</b>	<b>8,008</b>	<b>102</b>	<b>196</b>	<b>133</b>	<b>233</b>	<b>134</b>	<b>60</b>	<b>120</b>	<b>16,143</b>
ALLENTOWN	2,036	2,033	100	62	48	62	37	55	113	4,172
HARRISBURG	2,227	2,319	104	53	30	46	35	66	181	6,329
SCRANTON	913	908	99	24	10	36	14	65	161	2,254
WILLIAMSPORT	602	615	102	16	8	15	12	51	167	2,001
<b>CENTRAL REGION</b>	<b>5,778</b>	<b>5,875</b>	<b>102</b>	<b>155</b>	<b>96</b>	<b>159</b>	<b>98</b>	<b>60</b>	<b>151</b>	<b>14,756</b>
ALTOONA	686	758	110	8	5	20	14	54	157	2,196
MERCER	707	1,815	257	35	36	32	16	113	328	5,242
ERIE	2,244	837	37	24	35	66	15	56	142	2,126
PITTSBURGH	3,560	3,807	107	94	48	62	53	72	154	8,153
<b>WESTERN REGION</b>	<b>7,197</b>	<b>7,217</b>	<b>100</b>	<b>161</b>	<b>124</b>	<b>180</b>	<b>98</b>	<b>74</b>	<b>181</b>	<b>17,716</b>
<b>TOTAL CASES SUPERVISED</b>	<b>20,843</b>	<b>21,100</b>	<b>101</b>	<b>512</b>	<b>353</b>	<b>572</b>	<b>330</b>	<b>64</b>	<b>147</b>	<b>48,616</b>

Pa Cases in Other States	2,367	2,295	97	56	7	20
--------------------------	-------	-------	----	----	---	----



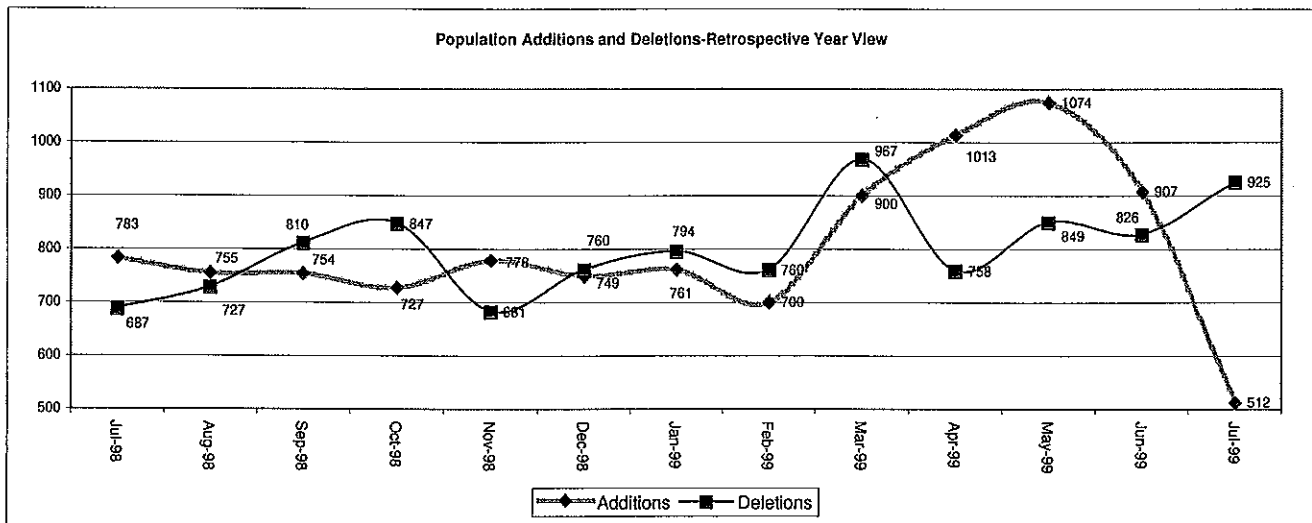
<sup>1</sup> Based upon filled positions

<sup>2</sup> Includes casework and investigation reports using geographic based workload formula

Table 2  
CASE ADDITIONS AND DELETIONS FOR SUPERVISED CASELOAD IN PENNSYLVANIA  
July 1999

Case Additions and Deletions	PAROLE*	REPAROLE	SPECIAL COUNTY PROBATION	SPECIAL COUNTY PAROLE	OTHER STATES' PAROLE	OTHER STATES' PROBATION	MONTHLY TOTAL	FISCAL YTD TOTAL
<b>ADDITIONS</b>	305	90	42	24	5	46	512	512
<b>DELETIONS-RECOMMITMENTS</b>								
<b>Convicted Parole Violator</b>								
State Corrections	57	20	1	0	0	0	78	78
County Corrections	9	0	3	4	0	0	16	16
Other States Cases	0	0	0	0	0	1	1	1
<b>Total Convicted Parole Violator</b>	66	20	4	4	0	1	95	95
<b>Technical Parole Violator</b>								
State Corrections	155	59	3	0	0	0	217	217
County Corrections	17	2	16	6	0	0	41	41
Other States Cases	0	0	0	0	0	0	0	0
<b>Total Technical Parole Violator</b>	172	61	19	6	0	0	258	258
<b>TOTAL RECOMMITMENTS</b>	238	81	23	10	0	1	353	353
Deletion Maximum Discharge	276	39	46	24	9	41	435	435
Deletion Death	11	3	1	1	0	2	18	18
Deletion Other	28	4	30	8	9	40	119	119
<b>TOTAL DELETIONS</b>	553	127	100	43	18	84	925	925

\*9 cases unclassified



**Table 3**  
**CASES BY ORIGINATING JURISDICTION**  
**BY REGION AND DISTRICT**  
**July 1999**

Region/District	PA Parole State Sentence				County		Other States		Total Cases
	from DOC*	Boot Camp	Cnty Prisons	Subtotal	Spec Prob	Spec Parole	Parole	Probation	
Chester	1,231	27	183	1,441	113	7	28	244	1,833
Philadelphia	5,329	50	205	5,584	174	23	101	293	6,175
<b>Eastern Region</b>	<b>6,560</b>	<b>77</b>	<b>388</b>	<b>7,025</b>	<b>287</b>	<b>30</b>	<b>129</b>	<b>537</b>	<b>8,008</b>
Allentown	1,277	27	383	1,687	135	6	41	164	2,033
Harrisburg	1,706	85	181	1,972	77	16	53	201	2,319
Scranton	364	6	258	628	78	7	25	170	908
Williamsport	410	4	95	509	31	7	15	53	615
<b>Central Region</b>	<b>3,757</b>	<b>122</b>	<b>917</b>	<b>4,796</b>	<b>321</b>	<b>36</b>	<b>134</b>	<b>588</b>	<b>5,875</b>
Altoona	381	6	78	465	135	78	18	62	758
Mercer	411	4	23	438	687	627	14	49	1,815
Erie	545	8	41	594	122	47	19	55	837
Pittsburgh	2,390	68	110	2,568	885	100	58	196	3,807
<b>Western Region</b>	<b>3,727</b>	<b>86</b>	<b>252</b>	<b>4,065</b>	<b>1,829</b>	<b>852</b>	<b>109</b>	<b>362</b>	<b>7,217</b>
<b>Total Cases</b>	<b>14,044</b>	<b>285</b>	<b>1,557</b>	<b>15,886</b>	<b>2,437</b>	<b>918</b>	<b>372</b>	<b>1,487</b>	<b>21,100</b>
<b>Percent of Total</b>	<b>67%</b>	<b>1%</b>	<b>7%</b>	<b>75%</b>	<b>12%</b>	<b>4%</b>	<b>2%</b>	<b>7%</b>	<b>100%</b>

\*48 cases unclassified

**Table 4**  
**CASES BY GRADE OF SUPERVISION**  
**BY REGION AND DISTRICT**  
**July 1999**

District/Region	Reporting					subtotal	Non-Reporting		TOTAL CASES
	Enhanced	Maximum	Medium	Minimum	Not Classified		Absconder	Detainees	
Chester	131	392	393	341	8	1,265	83	485	1,833
Philadelphia	345	1,385	1,414	818	82	4,044	602	1,529	6,175
<b>Eastern Region</b>	<b>476</b>	<b>1,777</b>	<b>1,807</b>	<b>1,159</b>	<b>90</b>	<b>5,309</b>	<b>685</b>	<b>2,014</b>	<b>8,008</b>
Allentown	13	356	530	433	2	1,334	127	572	2,033
Harrisburg	19	503	610	517	10	1,659	95	565	2,319
Scranton	12	142	268	211	7	640	17	251	908
Williamsport	1	103	209	172	1	486	4	125	615
<b>Central Region</b>	<b>45</b>	<b>1,104</b>	<b>1,617</b>	<b>1,333</b>	<b>20</b>	<b>4,119</b>	<b>243</b>	<b>1,513</b>	<b>5,875</b>
Altoona	6	165	258	158	5	592	21	145	758
Mercer	2	209	419	775	21	1,426	66	323	1,815
Erie	3	162	225	210	10	610	31	196	837
Pittsburgh	93	890	999	499	19	2,500	209	1,098	3,807
<b>Western Region</b>	<b>104</b>	<b>1,426</b>	<b>1,901</b>	<b>1,642</b>	<b>55</b>	<b>5,128</b>	<b>327</b>	<b>1,762</b>	<b>7,217</b>
<b>Total Cases</b>	<b>625</b>	<b>4,307</b>	<b>5,325</b>	<b>4,134</b>	<b>165</b>	<b>14,556</b>	<b>1,255</b>	<b>5,289</b>	<b>21,100</b>
<b>Percent of Total</b>	<b>3%</b>	<b>20%</b>	<b>25%</b>	<b>20%</b>	<b>1%</b>	<b>69%</b>	<b>6%</b>	<b>25%</b>	<b>100%</b>

\*48 cases unclassified

**TABLE 5  
CASES BY SEX AND RACE  
BY REGION AND DISTRICT  
JULY 1999**

District/Region	Male			Female			Percent Male	Percent Female	TOTAL CASES
	White*	Non-White	Total	White	Non-White	Total			
CHESTER	704	993	1,697	77	59	136	93%	7%	1,833
PHILADELPHIA	882	4,878	5,760	65	350	415	93%	7%	6,175
<b>EASTERN REGION</b>	<b>1,586</b>	<b>5,871</b>	<b>7,457</b>	<b>142</b>	<b>409</b>	<b>551</b>	<b>93%</b>	<b>7%</b>	<b>8,008</b>
ALLENTOWN	924	894	1,818	106	109	215	89%	11%	2,033
HARRISBURG	1,044	1,052	2,096	124	99	223	90%	10%	2,319
SCRANTON	681	120	801	89	18	107	88%	12%	908
WILLIAMSPORT	452	55	507	89	19	108	82%	18%	615
<b>CENTRAL REGION</b>	<b>3,101</b>	<b>2,121</b>	<b>5,222</b>	<b>408</b>	<b>245</b>	<b>653</b>	<b>89%</b>	<b>11%</b>	<b>5,875</b>
ALTOONA	600	75	675	77	6	83	89%	11%	758
MERCER	1,247	269	1,516	233	66	299	84%	16%	1,815
ERIE	494	256	750	55	32	87	90%	10%	837
PITTSBURGH	1,551	1,869	3,420	176	211	387	90%	10%	3,807
<b>WESTERN REGION</b>	<b>3,892</b>	<b>2,469</b>	<b>6,361</b>	<b>541</b>	<b>315</b>	<b>856</b>	<b>88%</b>	<b>12%</b>	<b>7,217</b>
<b>TOTAL CASES</b>	<b>8,579</b>	<b>10,461</b>	<b>19,040</b>	<b>1,091</b>	<b>969</b>	<b>2,060</b>	<b>90%</b>	<b>10%</b>	<b>21,100</b>

\*48 cases unclassified

**TABLE 6  
CASES BY EMPLOYMENT STATUS  
BY REGION AND DISTRICT  
JULY 1999**

District/Region	Employed	Unemployed	Unemployment Rate	Unable to Work	Unknown*	Non-Reporting	Total Cases
CHESTER	793	353	31%	84	35	568	1,833
PHILADELPHIA	2,321	1,146	33%	265	312	2,131	6,175
<b>EASTERN REGION</b>	<b>3,114</b>	<b>1,499</b>	<b>32%</b>	<b>349</b>	<b>347</b>	<b>2,699</b>	<b>8,008</b>
ALLENTOWN	800	285	26%	183	66	699	2,033
HARRISBURG	1,154	346	23%	124	35	660	2,319
SCRANTON	452	102	18%	76	10	268	908
WILLIAMSPORT	335	77	19%	61	13	129	615
<b>CENTRAL REGION</b>	<b>2,741</b>	<b>810</b>	<b>23%</b>	<b>444</b>	<b>124</b>	<b>1,756</b>	<b>5,875</b>
ALTOONA	367	90	20%	81	54	166	758
MERCER	746	338	31%	171	171	389	1,815
ERIE	382	127	25%	70	31	227	837
PITTSBURGH	1,438	772	35%	271	19	1,307	3,807
<b>WESTERN REGION</b>	<b>2,933</b>	<b>1,327</b>	<b>31%</b>	<b>593</b>	<b>275</b>	<b>2,089</b>	<b>7,217</b>
<b>TOTAL CASES</b>	<b>8,788</b>	<b>3,636</b>	<b>29%</b>	<b>1,386</b>	<b>746</b>	<b>6,544</b>	<b>21,100</b>

\*48 cases unclassified

Table 7  
BOARD DECISIONS  
July 1999

Type of Decision	Total
Parole to Street	525
Parole to Detainer	85
Parole Refused	699
Total Considered	1,309
Percent Granted	47%
Recommitments	353
Refer to Prior Action	48
Assigned by Courts	194
Other Decisions	476
<b>Total Decisions</b>	<b>2,380</b>

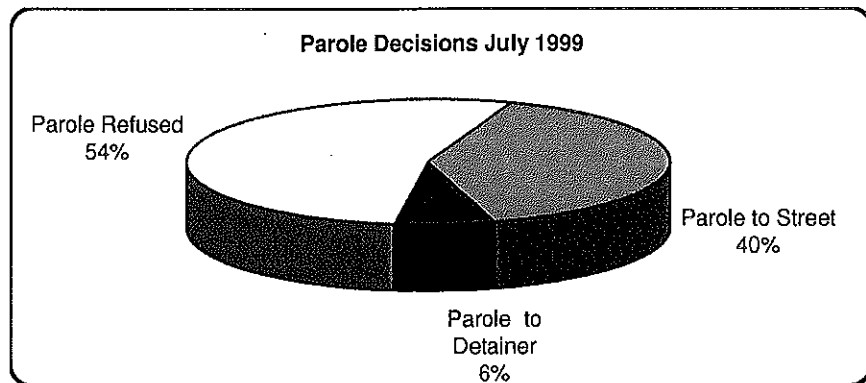


Table 8  
HEARINGS AND INTERVIEWS  
July 1999

Type	Board Members	Hearing Examiners	Total
<b>HEARINGS</b>			
Preliminary	0	53	53
Preliminary/Detention	0	22	22
Violation	0	214	214
Violation/Detention	0	35	35
Detention	0	30	30
Revocation	0	72	72
Revocation/Violation	0	14	14
Probable Cause Out-of State	0	12	12
Panel	49	0	49
<b>Total Hearings</b>	<b>49</b>	<b>452</b>	<b>501</b>
<b>INTERVIEWS</b>			
Parole/Minimum	238	635	873
Reparole/Review	428	841	1269
Victim Input	0	20	20
<b>Total Interviews</b>	<b>666</b>	<b>1,496</b>	<b>2,162</b>

**Table 9**  
**MONTHLY PAROLING DECISIONS**  
 July 1999

MONTH/YEAR	PAROLE GRANTED	PAROLE REFUSED	TOTAL CONSIDERED	% GRANTED
Jul-98	625	818	1,443	43%
Aug-98	622	862	1,484	42%
Sep-98	526	909	1,435	37%
Oct-98	620	819	1,439	43%
Nov-98	673	727	1,400	48%
Dec-98	697	787	1,484	47%
Jan-99	406	647	1,053	39%
Feb-99	878	1,007	1,885	47%
Mar-99	1,366	1,221	2,587	53%
Apr-99	703	736	1,439	49%
May-99	851	780	1,631	52%
Jun-99	583	616	1,199	49%
Jul-99	610	699	1,309	47%
Monthly Avg Prior 12 Mo	711	818	1,529	47%

