

COMMONWEALTH OF PENNSYLVANIA

Board of Probation and Parole

MONTHLY STATISTICAL REPORT

July 1997



Tom Ridge
Governor

William F. Ward
Chairman

Allen Castor
Member

Nicholas P. Muller
Member

Barbara K. Descher
Member

Sean R. Ryan
Member

Richard A. Kipp
Member

Michael M. Webster
Member

Gary R. Lucht
Member

Mary A. Achilles
Victim Advocate

pbpp
AN EQUAL OPPORTUNITY EMPLOYER

Table 1
CASELOAD, WORKLOAD, AND CHANGES BY DISTRICT AND TYPE OF UNIT
 July 1997

Type of Cases	Beginning FY Cases 7/1/96	Current Month Cases	Fiscal YTD Index	Additions	Deletions		Number of Agents	Average Caseload	Average Workload	Total Workload
					Recommits/ Revocation	Other Deletions				
General	1,149	1,004	87	35	9	34	17	59	149	2,540
Intensive	584	732	125	28	12	11	14	52	345	4,832
CHESTER DISTRICT	1,733	1,736	100	63	21	45	31	56	238	7,372
General	3,472	3,352	97	20	46	79	51	66	112	5,717
Intensive	2,186	2,193	100	89	44	16	56	39	235	13,176
Special	418	489	117	53	2	5	8	61	154	1,229
PHILADELPHIA DISTRICT	6,076	6,034	99	162	92	100	115	52	175	20,122
EASTERN REGION	7,809	7,770	100	225	113	145	146	53	188	27,494

General	1,402	1,334	95	44	24	33	22	61	106	2,322
Intensive	632	713	113	39	14	7	12	59	345	4,136
ALLENTOWN DISTRICT	2,034	2,047	101	83	38	40	34	60	190	6,458
General	1,770	1,804	102	89	16	44	25	72	147	3,664
Intensive	266	281	106	3	7	2	4	70	450	1,798
Special	129	116	90	25	5	2	3	39	118	354
HARRISBURG DISTRICT	2,165	2,201	102	117	28	48	32	69	182	5,816
General	607	591	97	19	12	22	10	59	119	1,185
Intensive	173	172	99	15	3	8	5	34	240	1,201
SCRANTON DISTRICT	780	763	98	34	15	30	15	51	159	2,386
WILLIAMSPORT DISTRICT	679	671	99	21	15	15	12	56	172	2,062
CENTRAL REGION	5,658	5,682	100	255	96	133	93	61	180	16,722

ALTOONA DISTRICT	710	711	100	24	7	16	10	71	207	2,069
BUTLER DISTRICT	661	655	99	27	14	21	11	60	194	2,139
General	2,300	2,177	95	145	25	211	25	87	209	5,220
Intensive	168	190	113	10	14	1	5	38	263	1,314
ERIE DISTRICT	2,468	2,367	96	155	39	212	30	79	218	6,534
General	2,997	3,013	101	47	30	40	48	63	129	6,206
Special	475	479	101	64	14	4	8	60	174	1,388
PITTSBURGH DISTRICT	3,472	3,492	101	111	44	44	56	62	136	7,594
WESTERN REGION	7,311	7,225	99	317	104	293	107	68	171	18,336

Total General	15,038	15,312	102	471	198	515	231	66	143	33,124
Total Intensive	4,718	4,281	91	184	94	45	96	45	276	26,457
Total Special	1022	1,084	106	142	21	11	19	57	156	2,971
TOTAL CASES SUPERVISED	20,778	20,677	100	797	313	571	346	60	181	62,552

Pa Cases in Other States	2,300	2,288	99	45	18	52				
--------------------------	-------	-------	----	----	----	----	--	--	--	--

Table 2
ADDITIONS & DELETIONS

July 1997

	PAROLE	REPAROLE	SPECIAL COUNTY PAROLE	SPECIAL COUNTY PROBATION	OTHER STATES' PAROLE	OTHER STATES' PROBATION	MONTHLY TOTAL	FISCAL YTD TOTAL
ADDITIONS	474	146	46	94	12	25	797	797
DELETIONS								
RECOMMITMENTS								
CPV								
D.O.C.	68	27	0	0	0	0	95	95
COUNTY	18	1	4	2	1	1	27	27
TOTAL CPV	86	28	4	2	1	1	122	122
TPV								
D.O.C.	97	42	1	2	0	0	142	142
COUNTY	25	4	11	8	0	1	49	49
TOTAL TPV	122	46	12	10	0	1	191	191
TOTAL RECOMMITMENTS	208	74	16	12	1	2	313	313
MAXIMUM DISCHARGE	174	34	79	133	13	41	474	474
DEATH	10	2	0	1	0	1	14	14
OTHER DELETIONS	11	2	7	19	10	34	83	83
TOTAL DELETIONS	403	112	102	165	24	78	884	884

Table 3
**CASES BY ORIGINATING JURISDICTION
 BY REGION AND DISTRICT**
 July 1997

Region/District	Parole(Pa. Sentence)			County Special Parole	County Special Probation	Other States' Parole	Other States' Probation	TOTAL CASES
	from D.O.C.	from County Prisons	Total					
CHESTER DISTRICT	1,093	263	1,356	7	108	54	211	1,736
PHILADELPHIA DISTRICT	5,027	287	5,314	24	199	140	357	6,034
EASTERN REGION	6,120	550	6,670	31	307	194	568	7,770
ALLENTOWN DISTRICT	1,202	531	1,733	6	85	69	154	2,047
HARRISBURG DISTRICT	1,704	207	1,911	6	71	74	139	2,201
SCRANTON DISTRICT	341	200	541	2	65	44	111	763
WILLIAMSPORT DISTRICT	428	111	539	4	37	11	80	671
CENTRAL REGION	3,675	1,049	4,724	18	258	198	484	5,682
ALTOONA DISTRICT	335	103	438	67	153	13	40	711
BUTLER DISTRICT	428	27	455	45	85	17	53	655
ERIE DISTRICT	747	57	804	642	810	37	74	2,367
PITTSBURGH DISTRICT	2,162	139	2,301	108	865	83	135	3,492
WESTERN REGION	3,672	326	3,998	862	1,913	150	302	7,225
TOTAL CASES SUPERVISED	13,467	1,925	15,392	911	2,478	542	1,354	20,677
PERCENT OF TOTAL	65%	9%	74%	4%	12%	3%	7%	100%

Table 4
**CASES BY GRADE OF SUPERVISION
 BY REGION AND DISTRICT**
 July 1997

District/Region	Reporting					Non-Reporting		TOTAL CASES
	Intensive	Maximum	Medium	Minimum	Not Classified	Absconder	Detainees	
CHESTER DISTRICT	566	319	252	195	8	89	307	1,736
PHILADELPHIA DISTRICT	1,510	697	995	999	99	672	1,062	6,034
EASTERN REGION	2,076	1,016	1,247	1,194	107	761	1,369	7,770
ALLENTOWN DISTRICT	536	340	369	339	51	118	294	2,047
HARRISBURG DISTRICT	225	558	409	522	67	92	328	2,201
SCRANTON DISTRICT	135	110	206	188	12	7	105	763
WILLIAMSPORT DISTRICT	0	272	165	148	15	6	65	671
CENTRAL REGION	896	1,280	1,149	1,197	145	223	792	5,682
ALTOONA DISTRICT	0	236	206	125	50	24	70	711
BUTLER DISTRICT	0	237	206	72	40	27	73	655
ERIE DISTRICT	155	365	457	800	321	53	216	2,367
PITTSBURGH DISTRICT	0	953	966	649	194	171	559	3,492
WESTERN REGION	155	1,791	1,835	1,646	605	275	918	7,225
TOTAL CASES SUPERVISED	3,127	4,087	4,231	4,037	857	1,259	3,079	20,677

Table 5
CASES BY SEX AND RACE
BY REGION AND DISTRICT
 July 1997

District/Region	Male			Female			Percent Male	Percent Female	TOTAL CASES
	White	Non-White	Total	White	Non-White	Total			
CHESTER DISTRICT	736	871	1,607	73	56	129	93%	7%	1,736
PHILADELPHIA DISTRICT	934	4,705	5,639	71	324	395	93%	7%	6,034
EASTERN REGION	1,670	5,576	7,246	144	380	524	93%	7%	7,770
ALLENTOWN DISTRICT	961	846	1,807	118	122	240	88%	12%	2,047
HARRISBURG DISTRICT	1,019	967	1,986	117	98	215	90%	10%	2,201
SCRANTON DISTRICT	615	61	676	79	8	87	89%	11%	763
WILLIAMSPORT DISTRICT	513	58	571	83	17	100	85%	15%	671
CENTRAL REGION	3,108	1,932	5,040	397	245	642	89%	11%	5,682
ALTOONA DISTRICT	562	71	633	72	6	78	89%	11%	711
BUTLER DISTRICT	444	139	583	55	17	72	89%	11%	655
ERIE DISTRICT	1,547	465	2,012	243	112	355	85%	15%	2,367
PITTSBURGH DISTRICT	1,426	1,700	3,126	168	198	366	90%	10%	3,492
WESTERN REGION	3,979	2,375	6,354	538	333	871	88%	12%	7,225
TOTAL CASES SUPERVISED	8,757	9,883	18,640	1,079	958	2,037	90%	10%	20,677

Table 6
CASES BY EMPLOYMENT STATUS
BY REGION AND DISTRICT
 July 1997

District/Region	Employed	Unemployed	Unemployment Rate	Unable to Work	Unknown	Non-Reporting	TOTAL CASES
CHESTER DISTRICT	691	462	40%	109	78	396	1,736
PHILADELPHIA DISTRICT	2,309	1,582	41%	302	107	1,734	6,034
EASTERN REGION	3,000	2,044	41%	411	185	2,130	7,770
ALLENTOWN DISTRICT	283	256	47%	77	1,019	412	2,047
HARRISBURG DISTRICT	1,301	318	20%	100	62	420	2,201
SCRANTON DISTRICT	483	99	17%	69	0	112	763
WILLIAMSPORT DISTRICT	390	122	24%	75	13	71	671
CENTRAL REGION	2,457	795	24%	321	1,094	1,015	5,682
ALTOONA DISTRICT	393	97	20%	87	40	94	711
BUTLER DISTRICT	317	157	33%	58	23	100	655
ERIE DISTRICT	1,164	448	28%	251	235	269	2,367
PITTSBURGH DISTRICT	1,513	891	37%	280	78	730	3,492
WESTERN REGION	3,387	1,593	32%	676	376	1,193	7,225
TOTAL CASES SUPERVISED	8,844	4,432	33%	1,408	1,655	4,338	20,677

Table 7
Board Decisions
July 1997

Type of Decision	Total
Parole to Street	529
Parole to Detainer	52
Parole Refused	680
Total Considered	1,261
Percent Granted	46%
Recommitments	357
Refer to Prior Action	131
Assign by Courts	109
Other Decisions	653
Total Decisions	2,511

Parole Decisions July 1997

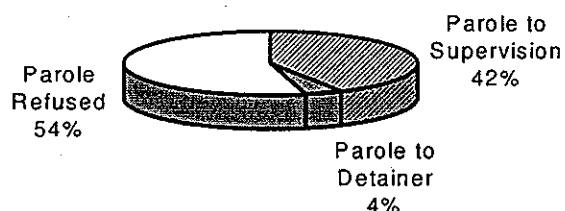
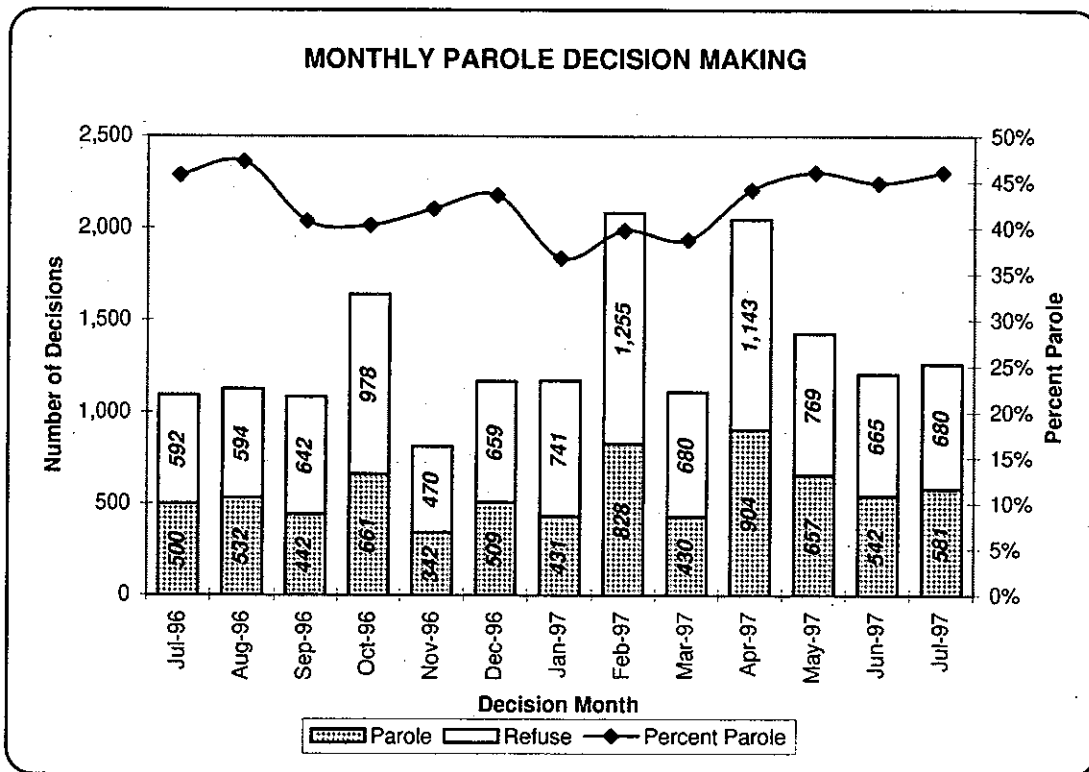


Table 8
Hearings and Interviews
July 1997

Type	Board Members	Hearing Examiners	Total
HEARINGS			
Preliminary	0	57	57
Preliminary/Detention Violation	0	21	21
Violation	0	155	155
Violation/Detention	0	28	28
Revocation	0	20	20
Revocation/Violation	0	79	79
Probable Cause Out-of-State Panel	0	14	14
	58	11	69
Total Hearings	58	385	443
INTERVIEWS			
Parole/Minimum	55	662	717
Reparole/Review	124	690	814
Victim Input	0	16	16
Total Interviews	179	1,368	1,547

Table 9
MONTHLY PAROLING DECISIONS
 July 1997

MONTH/YEAR	PAROLE GRANTED	PAROLE REFUSED	TOTAL CONSIDERED	PERCENT GRANTED
July 1996	500	592	1,092	46%
August 1996	532	594	1,126	47%
September 1996	442	642	1,084	41%
October 1996	661	978	1,639	40%
November 1996	342	470	812	42%
December 1996	509	659	1,168	44%
January 1997	431	741	1,172	37%
February 1997	828	1,255	2,083	40%
March 1997	430	680	1,110	39%
April 1997	904	1,143	2,047	44%
May 1997	657	769	1,426	46%
June 1997	542	665	1,207	45%
July 1997	581	680	1,261	46%
Prior 12 Months Monthly Average	572	773	1,345	43%



Total decisions monthly consist of cases considered both at minimum sentence date and reviews of prior refusals