

# COMMONWEALTH OF PENNSYLVANIA

## Board of Probation and Parole

### MONTHLY PROGRAM REPORT

May 2009



**Edward G. Rendell**  
Governor

Catherine C. McVey  
Chairman

C. James Fox  
Member

Jeffrey R. Imboden  
Member

Benjamin A. Martinez  
Member

Judith E. Viglione  
Member

Michael L. Green  
Member

Matthew T. Mangino, Esq  
Member

Gerard N. Massaro, Ph.D.  
Member

Lloyd A. White  
Member

Carol Lavery  
Victim Advocate

**PBPP**  
AN EQUAL OPPORTUNITY EMPLOYER

On September 29, 2008, the parole release of all offenders was suspended pending an independent review of the Department of Corrections and PA Board of Probation and Parole's procedures regarding parole preparation and release. The suspension was lifted on December 1, 2008. Information contained in this report reflects the impact of this suspension.

**Table 1**  
**WORKLOAD AND POPULATION CHANGES BY REGION / DISTRICT**  
**May 2009**

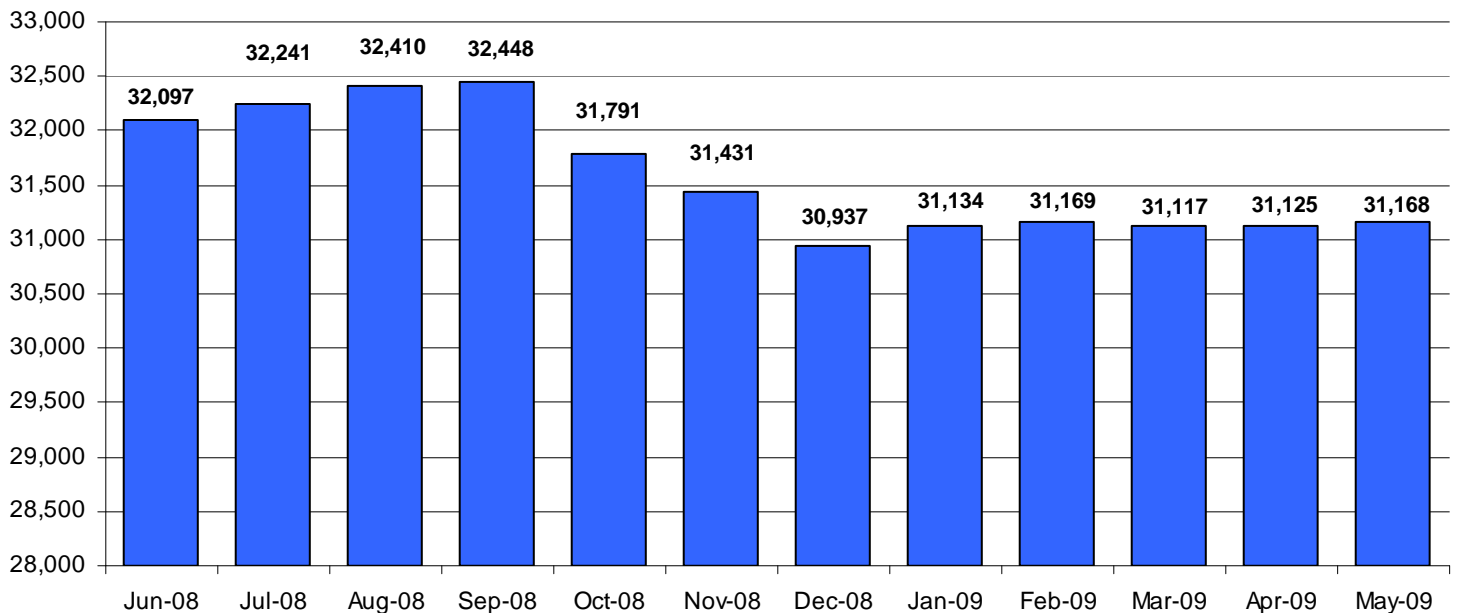
REGION / DISTRICT	Beginning Fiscal Yr <sup>1</sup> July 2008	Current Month Population	Fiscal YTD Index	Additions	Deletions		Number of Agents <sup>2</sup>	Average Workload	Total Workload
					Recommits/ Revocations	Other Deletions			
CHESTER	2,504	2,502	100	83	32	69	35	124	4,325
PHILADELPHIA	9,410	8,983	95	346	128	172	129	115	14,803
<b>EASTERN REGION</b>	<b>11,914</b>	<b>11,485</b>	<b>96</b>	<b>429</b>	<b>160</b>	<b>241</b>	<b>164</b>	<b>117</b>	<b>19,129</b>
ALLENTOWN	3,578	3,443	96	136	81	70	54	112	6,074
HARRISBURG	4,162	3,987	96	121	66	58	57	124	7,094
SCRANTON	1,658	1,733	105	80	40	53	29	114	3,307
WILLIAMSPORT	930	878	94	29	15	12	16	104	1,657
<b>CENTRAL REGION</b>	<b>10,328</b>	<b>10,041</b>	<b>97</b>	<b>366</b>	<b>202</b>	<b>193</b>	<b>156</b>	<b>116</b>	<b>18,132</b>
ALTOONA	1,300	1,274	98	35	10	24	22	116	2,547
MERCER	2,886	3,010	104	187	35	101	42	136	5,700
ERIE	1,443	1,416	98	61	13	23	23	116	2,665
PITTSBURGH	4,226	3,942	93	153	65	101	63	116	7,326
<b>WESTERN REGION</b>	<b>9,855</b>	<b>9,642</b>	<b>98</b>	<b>436</b>	<b>123</b>	<b>249</b>	<b>150</b>	<b>122</b>	<b>18,238</b>
<b>TOTAL Supervised</b>	<b>32,097</b>	<b>31,168</b>	<b>97</b>	<b>1,231</b>	<b>485</b>	<b>683</b>	<b>470</b>	<b>118</b>	<b>55,499</b>

<sup>1</sup> effective June 30

<sup>2</sup> Filled agent positions

PA Offenders in Other States	<b>2,884</b>	<b>2,780</b>	<b>96</b>	<b>41</b>	<b>23</b>	<b>85</b>
------------------------------	--------------	--------------	-----------	-----------	-----------	-----------

### Population - Retrospective Year View

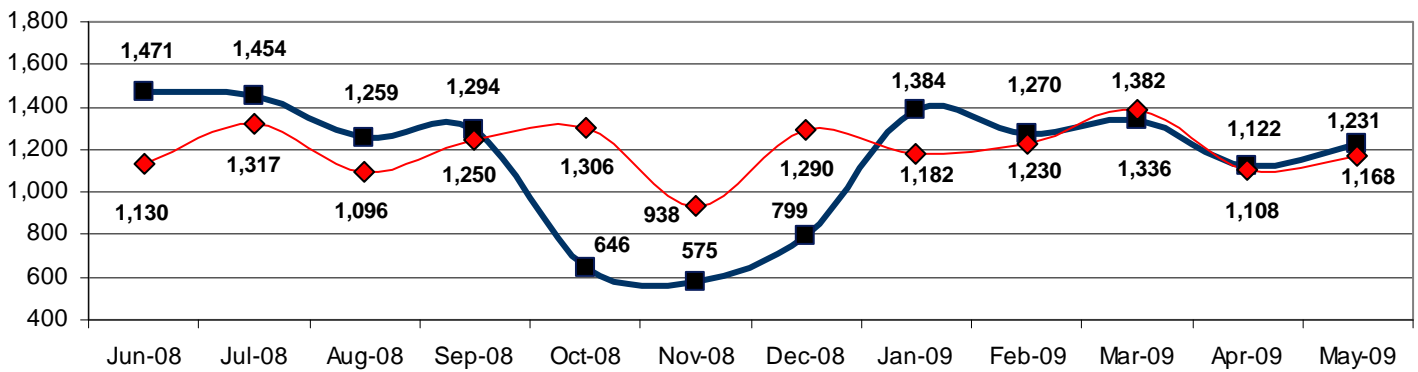


**Table 2  
SUPERVISED POPULATION ADDITIONS AND DELETIONS  
May 2009**

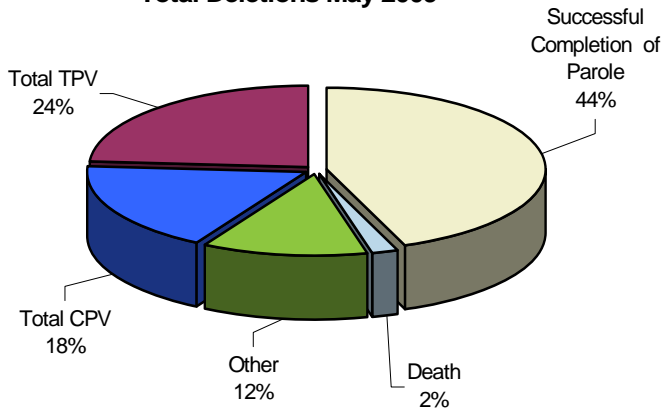
Population Additions and Deletions	Parole	Reparole	Special County Probation	Special County Parole	Other States' Probation	Other States' Parole	Monthly Total	Fiscal YTD Total
<b>ADDITIONS</b>	650	115	232	82	129	23	1,231	12,370
<b>DELETIONS-RECOMMITMENTS</b>								
<i>Convicted Parole Violator</i>								
State Corrections	107	50	5	0	0	0	162	1,679
County Corrections	10	0	22	8	0	0	40	379
Other States	0	0	0	0	4	2	6	29
<b>Total Convicted Parole Violator</b>	117	50	27	8	4	2	208	2,087
<i>Technical Parole Violator</i>								
State Corrections	170	59	3	0	0	0	232	2,731
County Corrections	13	2	23	6	0	0	44	478
Other States	0	0	0	0	0	1	1	19
<b>Total Technical Parole Violator</b>	183	61	26	6	0	1	277	3,228
<b>TOTAL RECOMMITMENTS</b>	300	111	53	14	4	3	485	5,315
Deletion Successful Completion	266	67	91	30	51	15	520	6,091
Deletion Death	13	4	3	0	1	1	22	235
Deletion Other	10	3	75	5	40	8	141	1,626
<b>TOTAL DELETIONS</b>	589	185	222	49	96	27	1,168	13,267

**Population Additions & Deletions-Retrospective Year View**

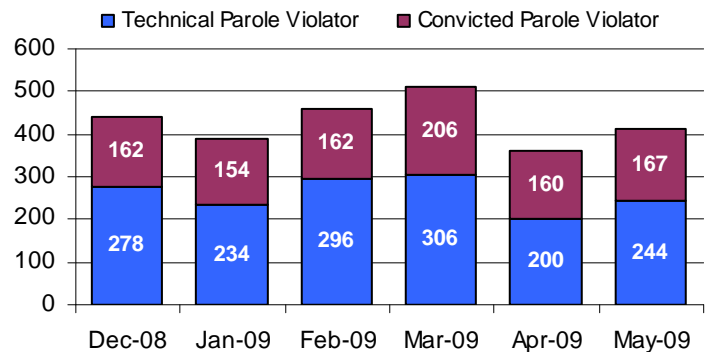
■ ADDITIONS    ◆ DELETIONS



**Total Deletions May 2009**



**State Sentence Parole Revocations\***



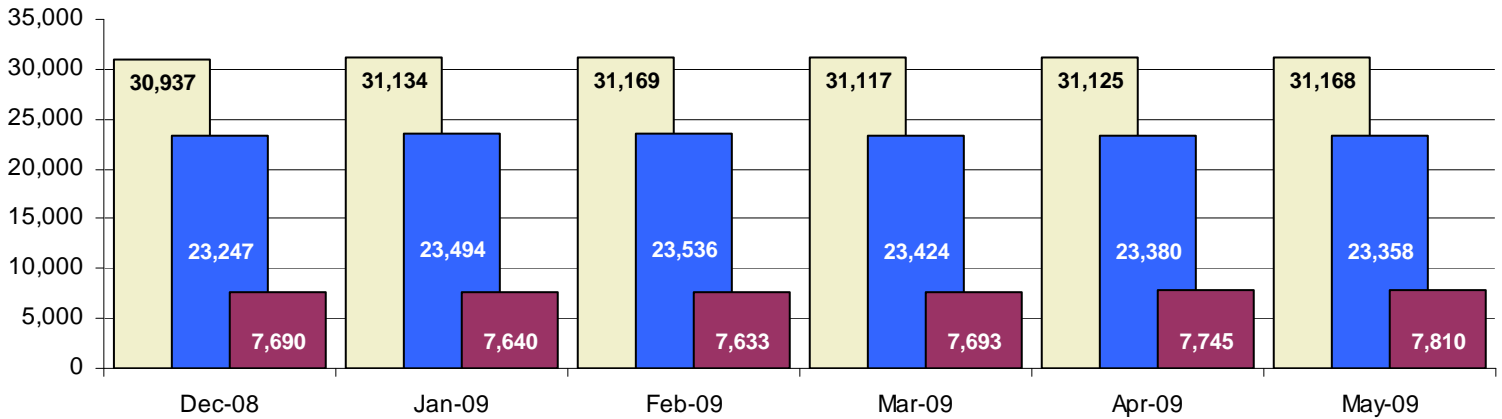
\* These revocations represent field case closure records and are dependent on case processing.

**Table 3**  
**SUPERVISED POPULATION BY ORIGINATING JURISDICTION and REGION / DISTRICT**  
**May 2009**

Region / District	PA Parole State Sentence				County		Other States		Total Population
	State Prisons	Boot Camp	County Prisons	Subtotal	Special Probation	Special Parole	Probation	Parole	
Chester	1,354	67	211	1,632	462	7	345	56	2,502
Philadelphia	6,402	210	371	6,983	1,172	7	671	150	8,983
<b>Eastern Region</b>	<b>7,756</b>	<b>277</b>	<b>582</b>	<b>8,615</b>	<b>1,634</b>	<b>14</b>	<b>1,016</b>	<b>206</b>	<b>11,485</b>
Allentown	2,119	139	380	2,638	297	4	421	83	3,443
Harrisburg	2,863	211	167	3,241	383	7	294	62	3,987
Scranton	965	10	223	1,198	145	2	311	77	1,733
Williamsport	560	22	50	632	128	5	91	22	878
<b>Central Region</b>	<b>6,507</b>	<b>382</b>	<b>820</b>	<b>7,709</b>	<b>953</b>	<b>18</b>	<b>1,117</b>	<b>244</b>	<b>10,041</b>
Altoona	751	20	72	843	282	36	87	26	1,274
Mercer	700	19	28	747	1,331	798	109	25	3,010
Erie	933	34	99	1,066	198	54	81	17	1,416
Pittsburgh	2,552	193	58	2,803	718	62	284	75	3,942
<b>Western Region</b>	<b>4,936</b>	<b>266</b>	<b>257</b>	<b>5,459</b>	<b>2,529</b>	<b>950</b>	<b>561</b>	<b>143</b>	<b>9,642</b>
<b>Total</b>	<b>19,199</b>	<b>925</b>	<b>1,659</b>	<b>21,783</b>	<b>5,116</b>	<b>982</b>	<b>2,694</b>	<b>593</b>	<b>31,168</b>
<b>Percent of Total</b>	<b>62%</b>	<b>3%</b>	<b>5%</b>	<b>70%</b>	<b>16%</b>	<b>3%</b>	<b>9%</b>	<b>2%</b>	<b>100%</b>

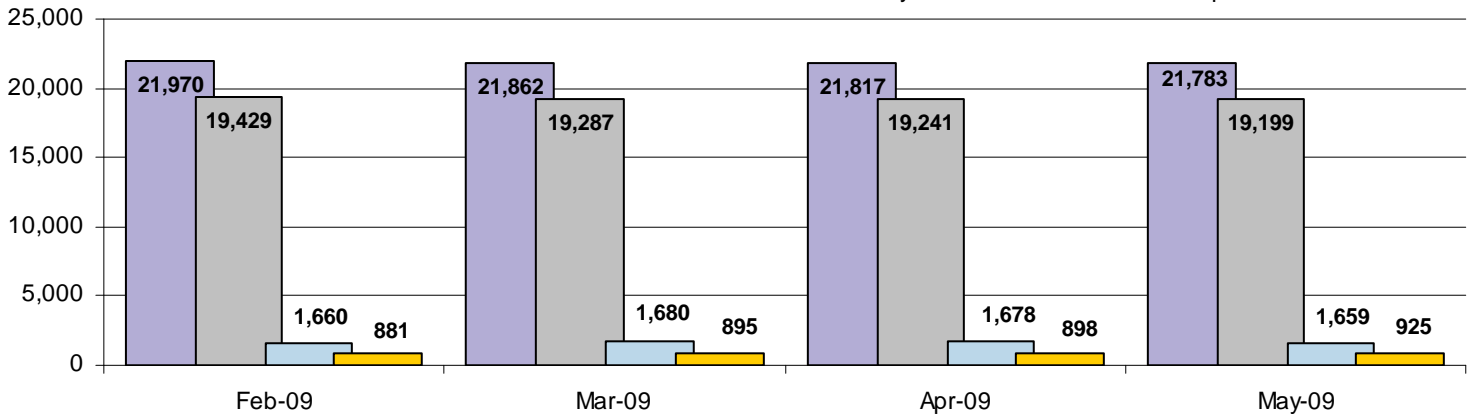
**Parole and Probation Supervised Populations**

□ Total Population    ■ Parole    ■ Probation



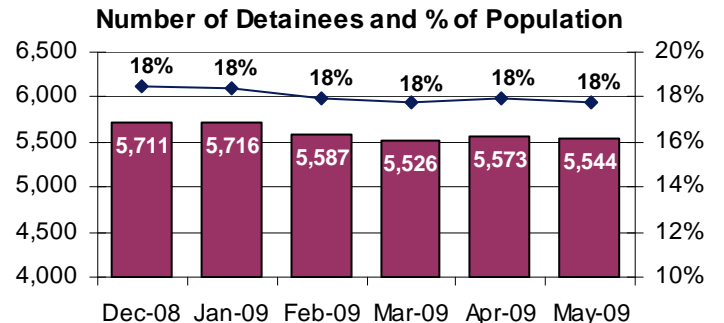
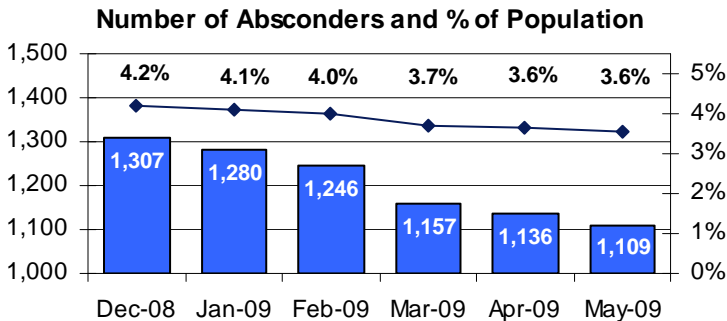
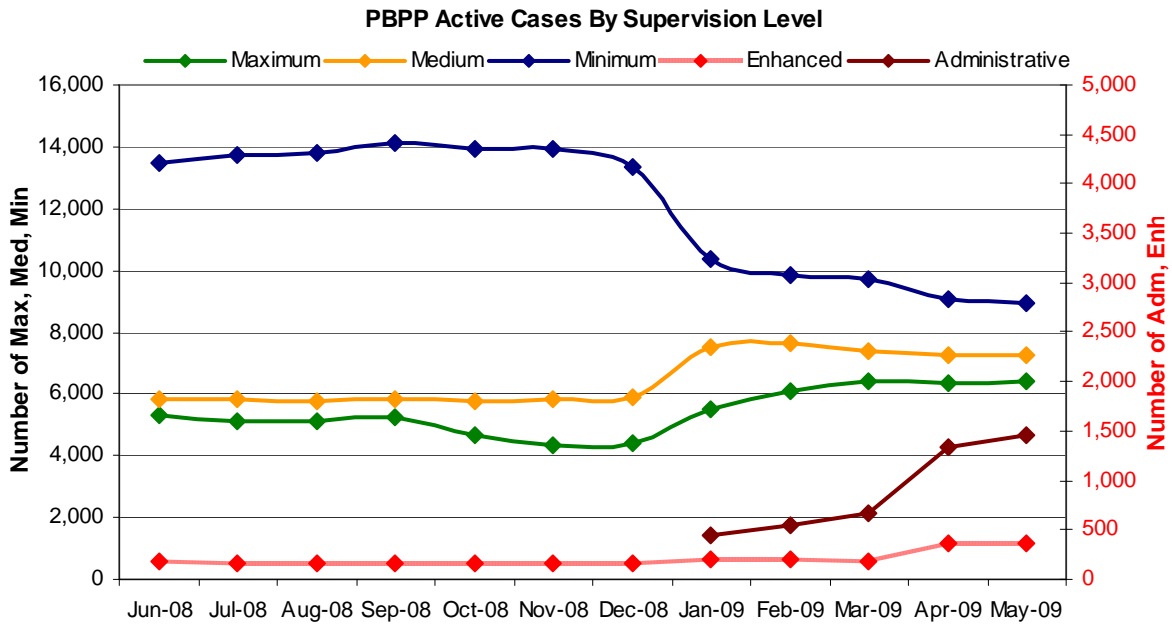
**Supervised State Sentence Cases**

■ Total State Sentence Cases    ■ State Prison Cases    ■ County Prison Cases    ■ Boot Camp Cases



**Table 4**  
**SUPERVISED POPULATION BY GRADE OF SUPERVISION and REGION / DISTRICT**  
**May 2009**

Region / District	Reporting							Non-Reporting		Total Population
	Enhanced	Maximum	Medium	Minimum	Admin. Parole	Not Classified	Subtotal	Absconder	Detainees	
Chester	11	427	605	787	162	16	2,008	42	452	2,502
Philadelphia	210	1,819	1,610	2,572	314	51	6,576	489	1,918	8,983
<b>Eastern Region</b>	<b>221</b>	<b>2,246</b>	<b>2,215</b>	<b>3,359</b>	<b>476</b>	<b>67</b>	<b>8,584</b>	<b>531</b>	<b>2,370</b>	<b>11,485</b>
Allentown	37	774	716	1,025	158	4	2,714	174	555	3,443
Harrisburg	41	871	849	1,064	231	4	3,060	155	772	3,987
Scranton	18	420	369	536	91	4	1,438	26	269	1,733
Williamsport	4	127	229	329	68	5	762	6	110	878
<b>Central Region</b>	<b>100</b>	<b>2,192</b>	<b>2,163</b>	<b>2,954</b>	<b>548</b>	<b>17</b>	<b>7,974</b>	<b>361</b>	<b>1,706</b>	<b>10,041</b>
Altoona	0	299	415	279	56	0	1,049	23	202	1,274
Mercer	4	322	859	1,272	172	7	2,636	47	327	3,010
Erie	9	344	416	382	63	3	1,217	29	170	1,416
Pittsburgh	33	1,030	1,161	689	140	2	3,055	118	769	3,942
<b>Western Region</b>	<b>46</b>	<b>1,995</b>	<b>2,851</b>	<b>2,622</b>	<b>431</b>	<b>12</b>	<b>7,957</b>	<b>217</b>	<b>1,468</b>	<b>9,642</b>
<b>Total</b>	<b>367</b>	<b>6,433</b>	<b>7,229</b>	<b>8,935</b>	<b>1,455</b>	<b>96</b>	<b>24,515</b>	<b>1,109</b>	<b>5,544</b>	<b>31,168</b>
<b>Percent of Total</b>	<b>1%</b>	<b>20%</b>	<b>23%</b>	<b>29%</b>	<b>4%</b>	<b>1%</b>	<b>78%</b>	<b>4%</b>	<b>18%</b>	<b>100%</b>



**Table 5**  
**SUPERVISED POPULATION BY GENDER, RACE and REGION / DISTRICT**  
**May 2009**

Region / District	Male					Female					% Male	Total Population
	White	Black	Hispanic	Other <sup>1</sup>	Total	White	Black	Hispanic	Other <sup>1</sup>	Total		
Chester	1,037	1,133	108	24	2,302	137	62	0	1	200	92%	2,502
Philadelphia	1,064	6,094	1,093	126	8,377	128	384	88	6	606	93%	8,983
<b>EASTERN REGION</b>	<b>2,101</b>	<b>7,227</b>	<b>1,201</b>	<b>150</b>	<b>10,679</b>	<b>265</b>	<b>446</b>	<b>88</b>	<b>7</b>	<b>806</b>	<b>93%</b>	<b>11,485</b>
Allentown	1,501	688	826	53	3,068	230	59	76	10	375	89%	3,443
Harrisburg	1,734	1,336	446	28	3,544	273	114	48	8	443	89%	3,987
Scranton	1,071	299	101	10	1,481	216	19	13	4	252	85%	1,733
Williamsport	602	70	9	2	683	162	26	5	2	195	78%	878
<b>CENTRAL REGION</b>	<b>4,908</b>	<b>2,393</b>	<b>1,382</b>	<b>93</b>	<b>8,776</b>	<b>881</b>	<b>218</b>	<b>142</b>	<b>24</b>	<b>1,265</b>	<b>87%</b>	<b>10,041</b>
Altoona	925	106	8	9	1,048	212	12	0	2	226	82%	1,274
Mercer	2,026	354	14	9	2,403	526	75	2	4	607	80%	3,010
Erie	851	321	46	9	1,227	144	37	5	3	189	87%	1,416
Pittsburgh	1,709	1,793	20	13	3,535	281	121	3	2	407	90%	3,942
<b>WESTERN REGION</b>	<b>5,511</b>	<b>2,574</b>	<b>88</b>	<b>40</b>	<b>8,213</b>	<b>1,163</b>	<b>245</b>	<b>10</b>	<b>11</b>	<b>1,429</b>	<b>85%</b>	<b>9,642</b>
<b>TOTAL</b>	<b>12,520</b>	<b>12,194</b>	<b>2,671</b>	<b>283</b>	<b>27,668</b>	<b>2,309</b>	<b>909</b>	<b>240</b>	<b>42</b>	<b>3,500</b>	<b>89%</b>	<b>31,168</b>

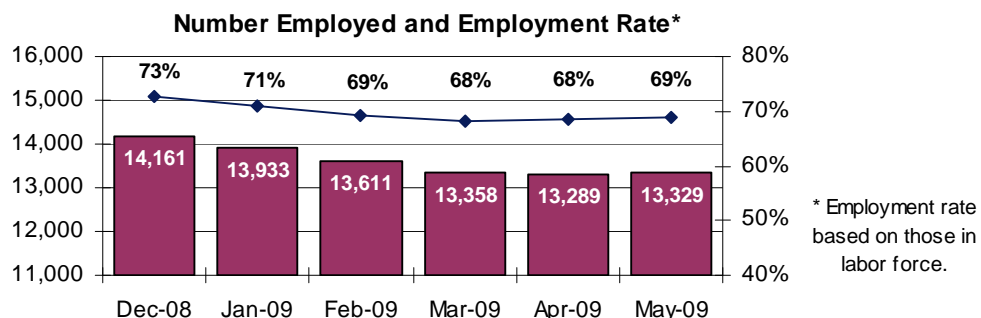
<sup>1</sup> "Other" includes Asian, Pacific Islander, Indian (American and Alaskan Native), and cases not elsewhere classified.

**Table 6**  
**SUPERVISED POPULATION BY EMPLOYMENT STATUS and REGION / DISTRICT**  
**May 2009**

Region / District	In Labor Force				Not In Labor Force					Total Population
	Employed Part Time	Employed Full Time	Unemployed	Employment Rate	Unable to Work <sup>2</sup>	Student	Unearned Income <sup>3</sup>	Unknown	Non-Reporting	
Chester	24	1,266	447	74%	214	10	43	4	494	2,502
Philadelphia	347	2,805	2,146	59%	919	63	294	2	2,407	8,983
<b>EASTERN REGION</b>	<b>371</b>	<b>4,071</b>	<b>2,593</b>	<b>63%</b>	<b>1,133</b>	<b>73</b>	<b>337</b>	<b>6</b>	<b>2,901</b>	<b>11,485</b>
Allentown	194	1,438	456	78%	417	31	176	2	729	3,443
Harrisburg	138	1,618	845	68%	376	12	68	3	927	3,987
Scranton	53	869	240	79%	191	11	70	4	295	1,733
Williamsport	58	391	150	75%	109	14	40	0	116	878
<b>CENTRAL REGION</b>	<b>443</b>	<b>4,316</b>	<b>1,691</b>	<b>74%</b>	<b>1,093</b>	<b>68</b>	<b>354</b>	<b>9</b>	<b>2,067</b>	<b>10,041</b>
Altoona	152	465	157	80%	111	10	154	0	225	1,274
Mercer	319	929	792	61%	518	8	68	2	374	3,010
Erie	72	564	196	76%	276	18	90	1	199	1,416
Pittsburgh	210	1,417	623	72%	673	27	104	1	887	3,942
<b>WESTERN REGION</b>	<b>753</b>	<b>3,375</b>	<b>1,768</b>	<b>70%</b>	<b>1,578</b>	<b>63</b>	<b>416</b>	<b>4</b>	<b>1,685</b>	<b>9,642</b>
<b>TOTAL</b>	<b>1,567</b>	<b>11,762</b>	<b>6,052</b>	<b>69%</b>	<b>3,804</b>	<b>204</b>	<b>1,107</b>	<b>19</b>	<b>6,653</b>	<b>31,168</b>

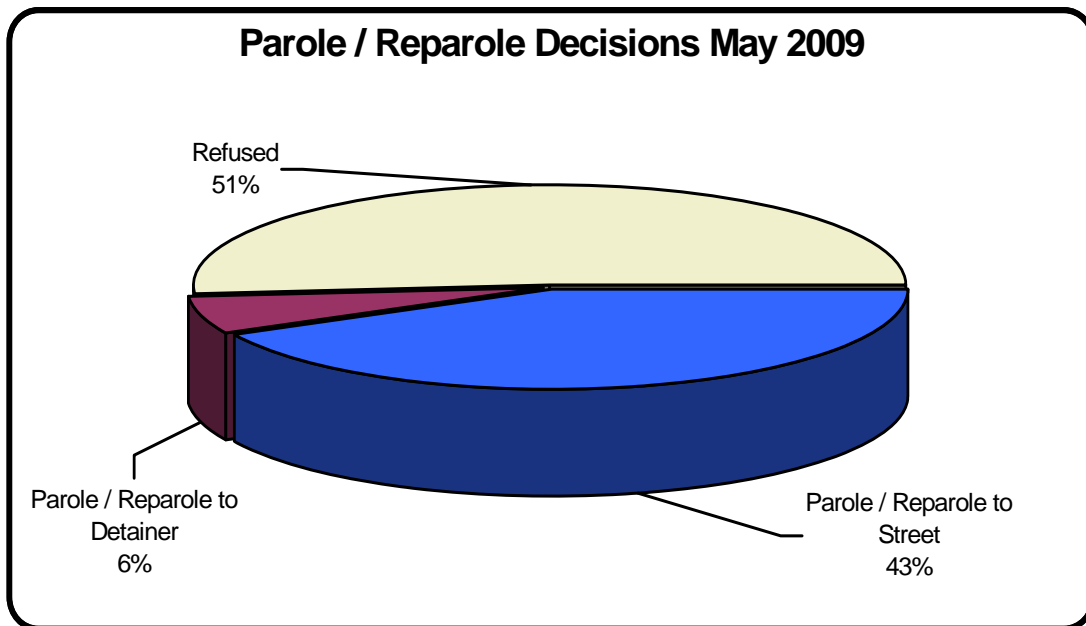
<sup>2</sup> Offender is unable to work due to a physical or mental disability, is a care provider, attends inpatient treatment, etc.

<sup>3</sup> Offender collects welfare assistance, workmen's compensation, monthly pension, Social Security, disability payments, etc.



**Table 7**  
**BOARD DECISIONS**  
**May 2009**

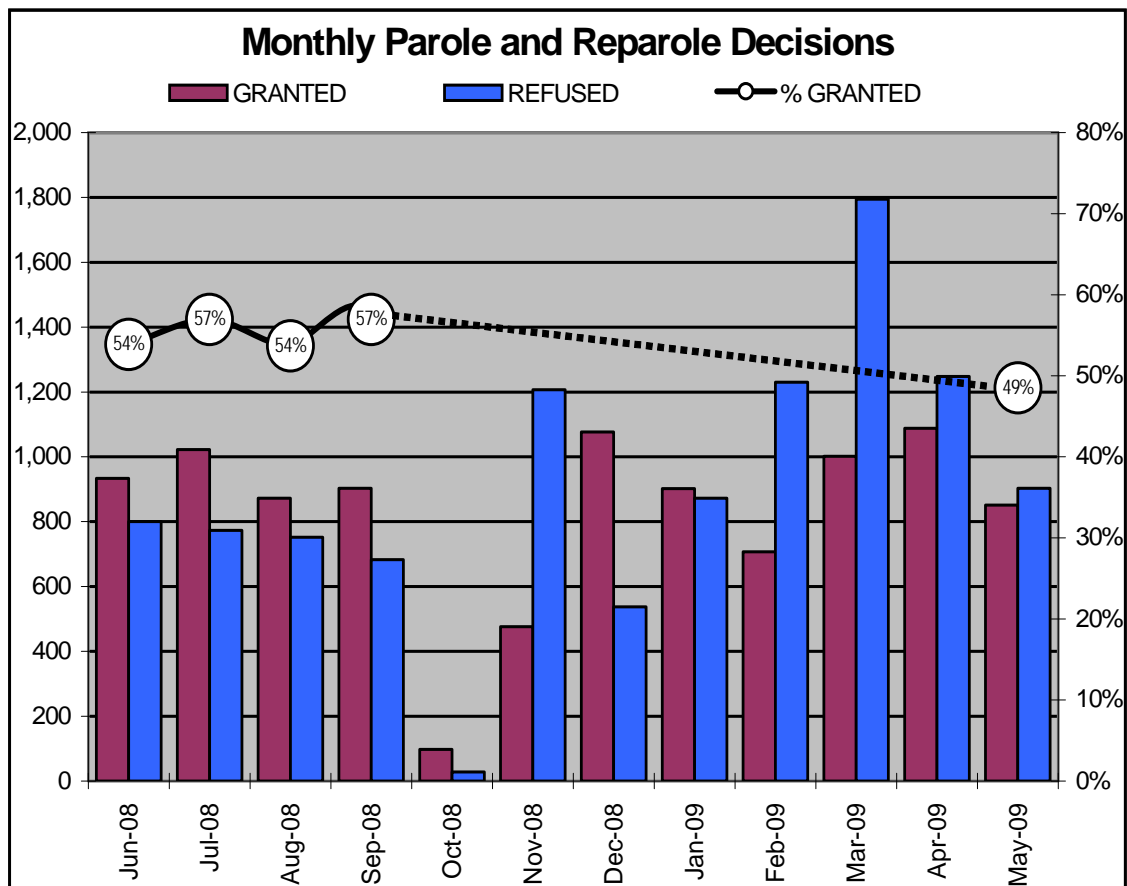
Type of Decision	Total
Parole / Reparole to Street	747
Parole / Reparole to Detainer	104
Refused	903
<b>Total Considered</b>	<b>1,754</b>
Recommitments as TPV	281
Recommitments as CPV	115
Recommitments as CPV and TPV	25
<b>Total Recommitments</b>	<b>421</b>
Refer to Prior Action	134
Assigned by Courts	195
Other Decisions	761
<b>Total Decisions</b>	<b>3,265</b>



**Table 8**  
**MONTHLY PAROLE and REPAROLE DECISIONS**  
**May 2009**

MONTH-YEAR	GRANTED	REFUSED	CONSIDERED	% GRANTED
Jun-08	934	800	1,734	54%
Jul-08	1,022	773	1,795	57%
Aug-08	872	752	1,624	54%
Sep-08	903	683	1,586	57%
Oct-08	97	28	125	*
Nov-08	476	1,207	1,683	*
Dec-08	1,077	537	1,614	*
Jan-09	902	872	1,774	*
Feb-09	707	1,230	1,937	*
Mar-09	1,002	1,795	2,797	*
Apr-09	1,088	1,248	2,336	*
May-09	851	903	1,754	49%
<b>Monthly Average Over 12 Months</b>	828	902	1,730	*

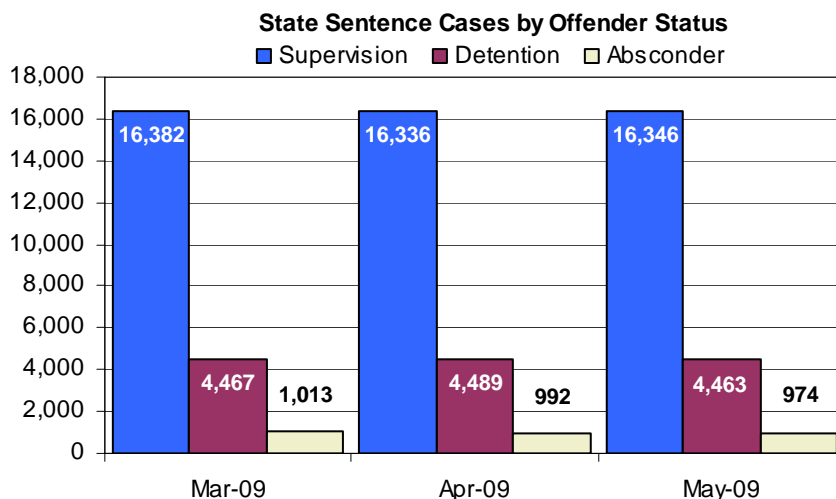
\* Data from October 2008 to April 2009 reflects the number of grants and refuses but not a parole rate as a consequence of the suspension of parole imposed on 9/29/2008, and then lifted on 12/1/2008.





Offender Status - May 2009					
Status	State Prison	County Prison	County Sentence	Other States Cases	Total
Supervision	15,061	1,285	5,079	3,090	24,515
Absconder	927	47	135	0	1,109
Detention	4,136	327	884	197	5,544
<b>Total</b>	<b>20,124</b>	<b>1,659</b>	<b>6,098</b>	<b>3,287</b>	<b>31,168</b>

PBPP Monthly Population Profile						
Offender Status	Dec-08	Jan-09	Feb-09	Mar-09	Apr-09	May-09
<b>State sentence from state institution</b>	<b>20,017</b>	<b>20,241</b>	<b>20,310</b>	<b>20,182</b>	<b>20,139</b>	<b>20,124</b>
<i>Supervision</i>	14,609	14,868	15,067	15,084	15,040	15,061
<i>Absconder</i>	1,077	1,037	1,008	959	944	927
<i>Detention</i>	4,331	4,336	4,235	4,139	4,155	4,136
<b>State sentence from county prison</b>	<b>1,672</b>	<b>1,688</b>	<b>1,660</b>	<b>1,680</b>	<b>1,678</b>	<b>1,659</b>
<i>Supervision</i>	1,291	1,302	1,272	1,298	1,296	1,285
<i>Absconder</i>	73	73	65	54	48	47
<i>Detention</i>	308	313	323	328	334	327
<b>County sentence Prob &amp; Parole</b>	<b>5,930</b>	<b>5,954</b>	<b>5,961</b>	<b>5,999</b>	<b>6,048</b>	<b>6,098</b>
<i>Supervision</i>	4,886	4,911	4,946	4,994	5,017	5,079
<i>Absconder</i>	157	170	173	144	144	135
<i>Detention</i>	887	873	842	861	887	884
<b>Other state's sentence Prob &amp; Parole</b>	<b>3,318</b>	<b>3,251</b>	<b>3,238</b>	<b>3,256</b>	<b>3,260</b>	<b>3,287</b>
<i>Supervision</i>	3,133	3,057	3,051	3,058	3,063	3,090
<i>Absconder</i>	0	0	0	0	0	0
<i>Detention</i>	185	194	187	198	197	197
<b>PBPP Population end of month</b>	<b>30,937</b>	<b>31,134</b>	<b>31,169</b>	<b>31,117</b>	<b>31,125</b>	<b>31,168</b>



## PBPP Population Breakdown By Place of Incarceration/Jurisdiction – May 2009

Monthly Count of Grant and Refuse Board Actions							
Type of Decision	County Prison			State Prison			All Grant/Refuse Board Actions
	Grant	Refuse	Total	Grant	Refuse	Total	
June 2008	52	29	81	882	771	1,653	1,734
July 2008	79	50	129	943	723	1,666	1,795
August 2008	66	37	103	806	715	1,521	1,624
September 2008	60	47	107	843	636	1,479	1,586
October 2008	10	0	10	87	28	115	125
November 2008	43	61	104	433	1,146	1,579	1,683
December 2008	116	25	141	961	512	1,473	1,614
January 2009	57	56	113	845	816	1,661	1,774
February 2009	49	73	122	658	1,157	1,815	1,937
March 2009	94	74	168	908	1,721	2,629	2,797
April 2009	89	57	146	999	1,191	2,190	2,336
May 2009	61	52	113	790	851	1,641	1,754
<b>2009 Total</b>	<b>350</b>	<b>312</b>	<b>662</b>	<b>4,200</b>	<b>5,736</b>	<b>9,936</b>	<b>10,598</b>

Additions and Deletions						
	Dec-08	Jan-09	Feb-09	Mar-09	Apr-09	May-09
<b>Total Additions</b>	<b>799</b>	<b>1,384</b>	<b>1,270</b>	<b>1,336</b>	<b>1,122</b>	<b>1,231</b>
State sentence - State Prison	338	897	832	786	610	716
State sentence - County Prison	48	88	62	83	67	49
County sentence Prob & Parole	244	277	239	292	271	314
Other state's sentence	169	122	137	175	174	152
<b>Total Deletions</b>	<b>1,290</b>	<b>1,182</b>	<b>1,230</b>	<b>1,382</b>	<b>1,108</b>	<b>1,168</b>
<b>State sentence - State Prison</b>	<b>760</b>	<b>650</b>	<b>749</b>	<b>861</b>	<b>646</b>	<b>705</b>
<i>Technical Violator</i>	262	221	281	291	189	229
<i>Convicted Violator</i>	148	147	151	193	152	157
<i>Successful Completion</i>	321	256	285	351	277	292
<i>Other Case Closure</i>	29	26	32	26	28	27
<b>State sentence - County Prison</b>	<b>69</b>	<b>71</b>	<b>74</b>	<b>74</b>	<b>56</b>	<b>69</b>
<i>Technical Violator</i>	16	13	15	15	11	15
<i>Convicted Violator</i>	14	7	11	13	8	10
<i>Successful Completion</i>	38	47	43	44	36	41
<i>Other Case Closure</i>	1	4	5	2	1	3
<b>County sentence Prob &amp; Parole</b>	<b>296</b>	<b>272</b>	<b>254</b>	<b>289</b>	<b>236</b>	<b>271</b>
<i>Technical Violator</i>	40	27	37	45	32	32
<i>Convicted Violator</i>	39	27	31	38	31	35
<i>Successful Completion</i>	143	154	135	144	113	121
<i>Other Case Closure</i>	74	64	51	62	60	83
<b>Other state's sentence</b>	<b>165</b>	<b>189</b>	<b>153</b>	<b>158</b>	<b>170</b>	<b>123</b>
<i>Technical Violator</i>	2	2	1	4	4	1
<i>Convicted Violator</i>	2	4	6	2	2	6
<i>Successful Completion</i>	74	79	66	70	67	66
<i>Other Case Closure</i>	87	104	80	82	97	50
<b>PBPP Population end of month</b>	<b>30,937</b>	<b>31,134</b>	<b>31,169</b>	<b>31,117</b>	<b>31,125</b>	<b>31,168</b>