

# COMMONWEALTH OF PENNSYLVANIA

## Board of Probation and Parole

### MONTHLY PROGRAM REPORT

November 2006



**Edward G. Rendell**  
Governor

Catherine C. McVey  
Chairman

Michael L. Green  
Member

Jeffrey R. Imboden  
Member

Matthew T. Mangino, Esq  
Member

Benjamin A. Martinez  
Member

Gerard N. Massaro, Ph.D.  
Member

Michael M. Webster  
Member

Lloyd A. White  
Member

Carol Lavery  
Victim Advocate

**PBPP**  
AN EQUAL OPPORTUNITY EMPLOYER

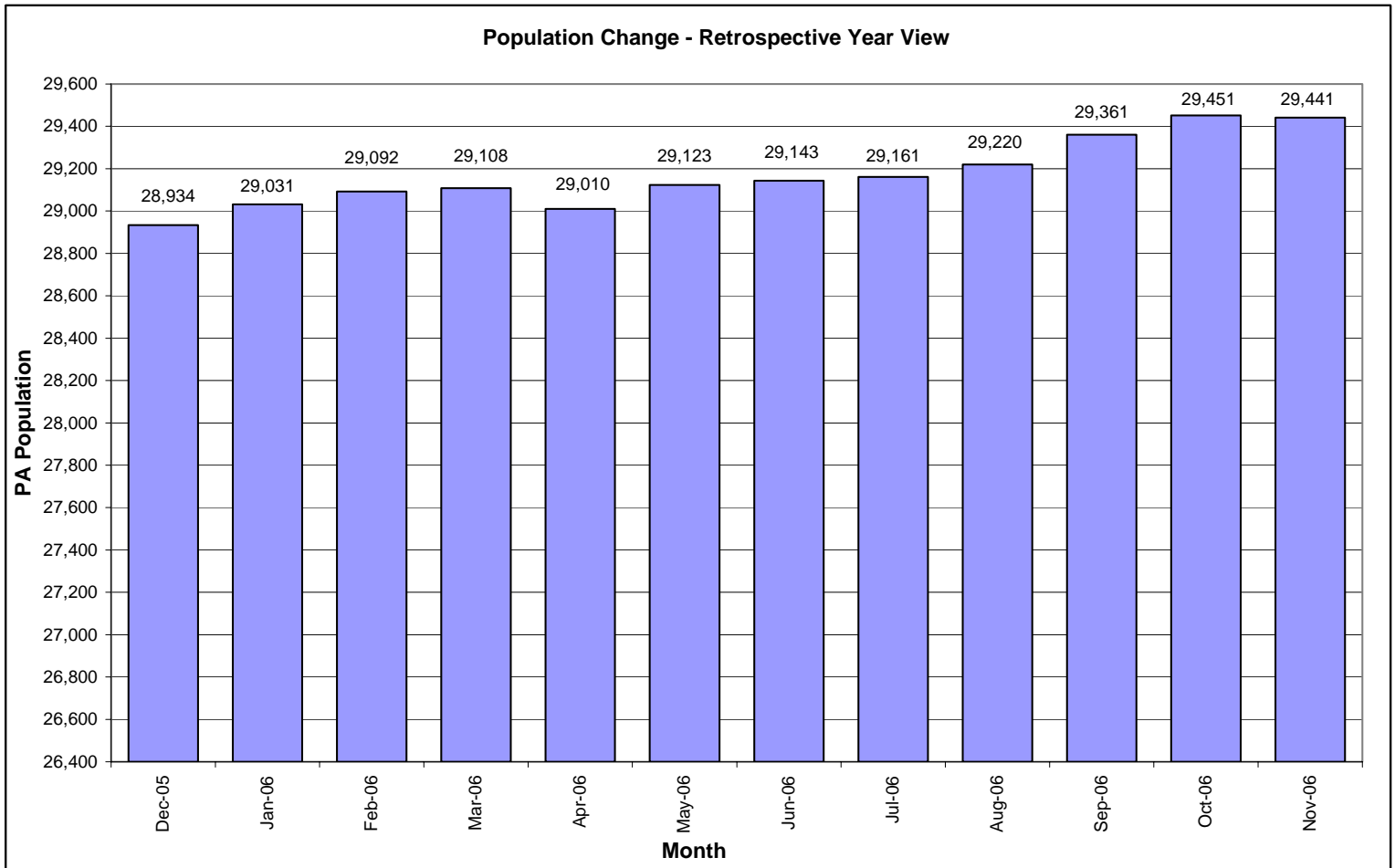
**Table 1  
WORKLOAD AND POPULATION CHANGES BY REGION / DISTRICT  
November 2006**

REGION / DISTRICT	Beginning Fiscal Yr <sup>1</sup> July 2006	Current Month Population	Fiscal YTD Index	Additions	Deletions		Number of Agents <sup>2</sup>	Average Workload	Total Workload
					Recommits/ Revocations	Other Deletions			
CHESTER	2,303	2,308	100	77	45	45	33	127	4,205
PHILADELPHIA	8,845	8,844	100	322	120	194	111	138	15,358
<b>EASTERN REGION</b>	<b>11,148</b>	<b>11,152</b>	<b>100</b>	<b>399</b>	<b>165</b>	<b>239</b>	<b>144</b>	<b>136</b>	<b>19,563</b>
ALLENTOWN	3,265	3,327	102	137	51	71	40	144	5,776
HARRISBURG	3,737	3,769	101	144	109	87	48	144	6,906
SCRANTON	1,558	1,566	101	59	22	46	21	141	2,970
WILLIAMSPORT	827	821	99	24	6	20	13	122	1,587
<b>CENTRAL REGION</b>	<b>9,387</b>	<b>9,483</b>	<b>101</b>	<b>364</b>	<b>188</b>	<b>224</b>	<b>122</b>	<b>141</b>	<b>17,239</b>
ALTOONA	1,075	1,137	106	38	17	15	16	145	2,316
MERCER	2,446	2,485	102	136	26	98	37	131	4,833
ERIE	1,246	1,275	102	63	17	37	16	150	2,393
PITTSBURGH	3,859	3,909	101	151	55	72	58	124	7,173
<b>WESTERN REGION</b>	<b>8,626</b>	<b>8,806</b>	<b>102</b>	<b>388</b>	<b>115</b>	<b>222</b>	<b>127</b>	<b>132</b>	<b>16,715</b>
<b>TOTAL Supervised</b>	<b>29,161</b>	<b>29,441</b>	<b>101</b>	<b>1,151</b>	<b>468</b>	<b>685</b>	<b>393</b>	<b>136</b>	<b>53,517</b>

<sup>1</sup> effective June 30

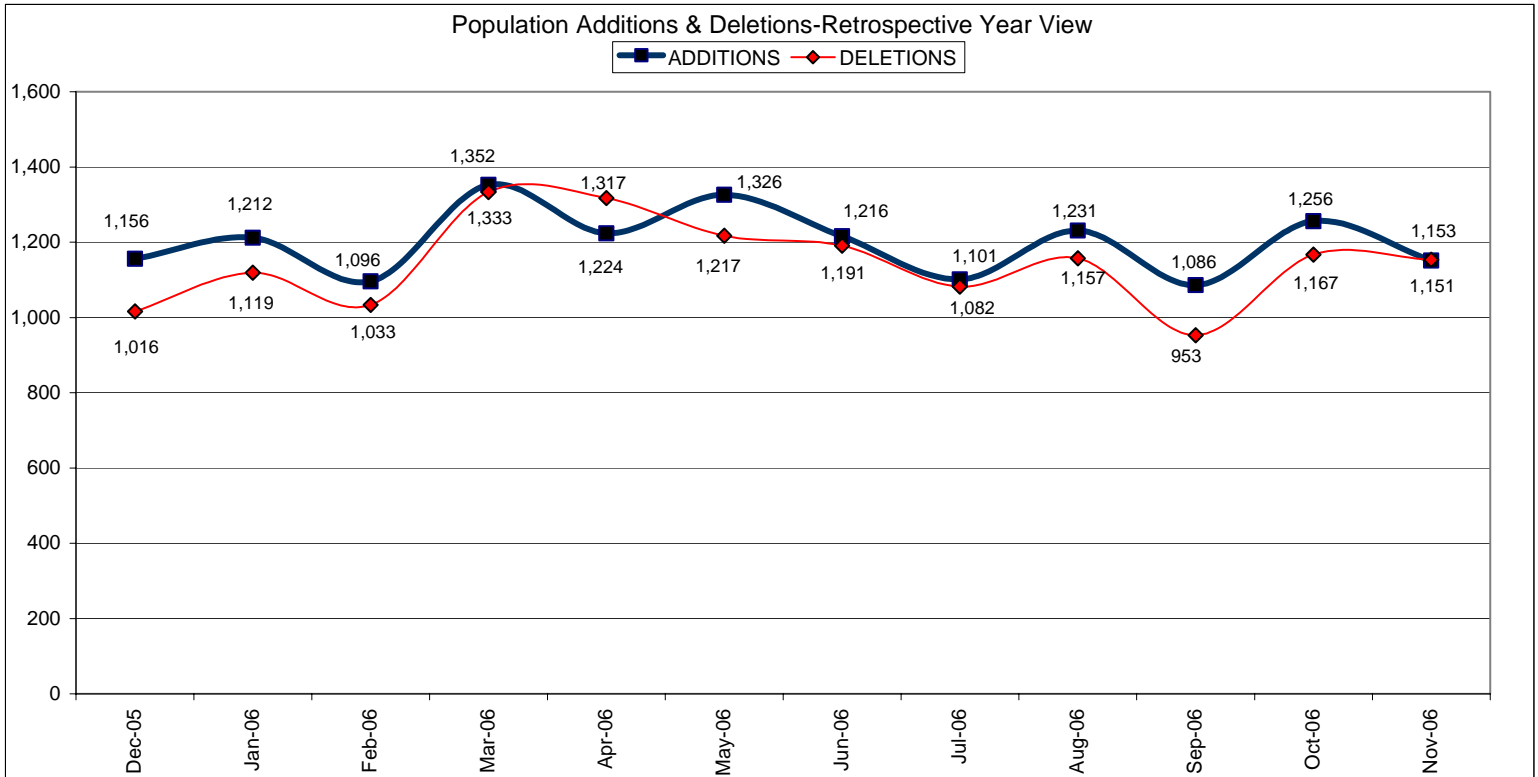
<sup>2</sup> Filled agent positions

PA Offenders in Other States	<b>2,723</b>	<b>2,800</b>	<b>103</b>	<b>62</b>	<b>9</b>	<b>33</b>
------------------------------	--------------	--------------	------------	-----------	----------	-----------



**Table 2  
SUPERVISED POPULATION ADDITIONS AND DELETIONS  
November 2006**

Population Additions and Deletions	Parole	ReParole	Special County Probation	Special County Parole	Other States' Parole	Other States' Probation	Monthly Total	Fiscal YTD Total
<b>ADDITIONS</b>	586	202	158	54	17	134	1,151	5,825
<b>DELETIONS-RECOMMITMENTS</b>								
<i>Convicted Parole Violator</i>								
State Corrections	93	41	3	0	0	0	137	593
County Corrections	5	0	14	2	0	0	21	134
Other States	0	0	0	0	0	1	1	12
<b>Total Convicted Parole Violator</b>	98	41	17	2	0	1	159	739
<i>Technical Parole Violator</i>								
State Corrections	180	78	8	0	0	0	266	1,104
County Corrections	13	3	20	7	0	0	43	253
Other States	0	0	0	0	0	0	0	7
<b>Total Technical Parole Violator</b>	193	81	28	7	0	0	309	1,364
<b>TOTAL RECOMMITMENTS</b>	291	122	45	9	0	1	468	2,103
Deletion Maximum Discharge	208	92	87	35	17	47	486	2,525
Deletion Death	20	3	3	1	0	4	31	120
Deletion Other	21	2	48	5	9	83	168	764
<b>TOTAL DELETIONS</b>	540	219	183	50	26	135	1,153	5,512



**Table 3**  
**SUPERVISED POPULATION BY ORIGINATING JURISDICTION and REGION / DISTRICT**  
**November 2006**

Region / District	PA Parole State Sentence				County		Other States		Total Population
	State Prisons	Boot Camp	County Prisons	Subtotal	Special Probation	Special Parole	Parole	Probation	
Chester	1,393	91	226	1,710	248	3	53	294	2,308
Philadelphia	6,831	228	353	7,412	721	3	117	591	8,844
<b>Eastern Region</b>	<b>8,224</b>	<b>319</b>	<b>579</b>	<b>9,122</b>	<b>969</b>	<b>6</b>	<b>170</b>	<b>885</b>	<b>11,152</b>
Allentown	2,112	119	376	2,607	256	5	66	393	3,327
Harrisburg	2,656	204	207	3,067	294	4	59	345	3,769
Scranton	819	28	232	1,079	89	7	67	324	1,566
Williamsport	508	27	61	596	106	11	14	94	821
<b>Central Region</b>	<b>6,095</b>	<b>378</b>	<b>876</b>	<b>7,349</b>	<b>745</b>	<b>27</b>	<b>206</b>	<b>1,156</b>	<b>9,483</b>
Altoona	718	32	91	841	174	19	15	88	1,137
Mercer	555	10	19	584	1,171	657	8	65	2,485
Erie	887	31	48	966	184	42	21	62	1,275
Pittsburgh	2,641	209	91	2,941	625	50	59	234	3,909
<b>Western Region</b>	<b>4,801</b>	<b>282</b>	<b>249</b>	<b>5,332</b>	<b>2,154</b>	<b>768</b>	<b>103</b>	<b>449</b>	<b>8,806</b>
<b>Total</b>	<b>19,120</b>	<b>979</b>	<b>1,704</b>	<b>21,803</b>	<b>3,868</b>	<b>801</b>	<b>479</b>	<b>2,490</b>	<b>29,441</b>
<b>Percent of Total</b>	<b>65%</b>	<b>3%</b>	<b>6%</b>	<b>74%</b>	<b>13%</b>	<b>3%</b>	<b>2%</b>	<b>8%</b>	<b>100%</b>

**Table 4**  
**SUPERVISED POPULATION BY GRADE OF SUPERVISION and REGION / DISTRICT**  
**November 2006**

Region / District	Reporting						Non-Reporting		Total Population
	Enhanced	Maximum	Medium	Minimum	Not Classified	Subtotal	Absconder	Detainees	
Chester	13	571	509	633	2	1,728	85	495	2,308
Philadelphia	65	2,539	1,358	2,003	42	6,007	728	2,109	8,844
<b>Eastern Region</b>	<b>78</b>	<b>3,110</b>	<b>1,867</b>	<b>2,636</b>	<b>44</b>	<b>7,735</b>	<b>813</b>	<b>2,604</b>	<b>11,152</b>
Allentown	17	644	655	985	4	2,305	233	789	3,327
Harrisburg	33	786	607	1,354	20	2,800	173	796	3,769
Scranton	8	216	343	668	3	1,238	31	297	1,566
Williamsport	2	81	162	456	3	704	7	110	821
<b>Central Region</b>	<b>60</b>	<b>1,727</b>	<b>1,767</b>	<b>3,463</b>	<b>30</b>	<b>7,047</b>	<b>444</b>	<b>1,992</b>	<b>9,483</b>
Altoona	15	206	291	391	0	903	32	202	1,137
Mercer	3	273	599	1,176	4	2,055	89	341	2,485
Erie	11	218	268	452	2	951	39	285	1,275
Pittsburgh	51	933	858	1,024	4	2,870	142	897	3,909
<b>Western Region</b>	<b>80</b>	<b>1,630</b>	<b>2,016</b>	<b>3,043</b>	<b>10</b>	<b>6,779</b>	<b>302</b>	<b>1,725</b>	<b>8,806</b>
<b>Total</b>	<b>218</b>	<b>6,467</b>	<b>5,650</b>	<b>9,142</b>	<b>84</b>	<b>21,561</b>	<b>1,559</b>	<b>6,321</b>	<b>29,441</b>
<b>Percent of Total</b>	<b>1%</b>	<b>22%</b>	<b>19%</b>	<b>31%</b>	<b>0%</b>	<b>73%</b>	<b>5%</b>	<b>21%</b>	<b>100%</b>

**Table 5**  
**SUPERVISED POPULATION BY GENDER, RACE and REGION / DISTRICT**  
**November 2006**

Region / District	Male			Female			Percent Male	Percent Female	Total Population
	White	Non White	Total	White	Non White	Total			
Chester	879	1,265	2,144	100	64	164	93%	7%	2,308
Philadelphia	998	7,294	8,292	117	435	552	94%	6%	8,844
<b>EASTERN REGION</b>	<b>1,877</b>	<b>8,559</b>	<b>10,436</b>	<b>217</b>	<b>499</b>	<b>716</b>	<b>94%</b>	<b>6%</b>	<b>11,152</b>
Allentown	1,337	1,645	2,982	206	139	345	90%	10%	3,327
Harrisburg	1,651	1,687	3,338	269	162	431	89%	11%	3,769
Scranton	1,060	300	1,360	179	27	206	87%	13%	1,566
Williamsport	597	73	670	129	22	151	82%	18%	821
<b>CENTRAL REGION</b>	<b>4,645</b>	<b>3,705</b>	<b>8,350</b>	<b>783</b>	<b>350</b>	<b>1,133</b>	<b>88%</b>	<b>12%</b>	<b>9,483</b>
Altoona	875	128	1,003	119	15	134	88%	12%	1,137
Mercer	1,613	359	1,972	434	79	513	79%	21%	2,485
Erie	698	395	1,093	138	44	182	86%	14%	1,275
Pittsburgh	1,644	1,900	3,544	232	133	365	91%	9%	3,909
<b>WESTERN REGION</b>	<b>4,830</b>	<b>2,782</b>	<b>7,612</b>	<b>923</b>	<b>271</b>	<b>1,194</b>	<b>86%</b>	<b>14%</b>	<b>8,806</b>
<b>TOTAL</b>	<b>11,352</b>	<b>15,046</b>	<b>26,398</b>	<b>1,923</b>	<b>1,120</b>	<b>3,043</b>	<b>90%</b>	<b>10%</b>	<b>29,441</b>

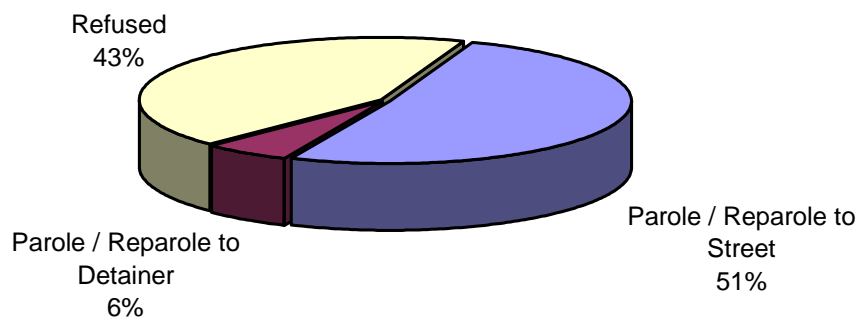
**Table 6**  
**SUPERVISED POPULATION BY EMPLOYMENT STATUS and REGION / DISTRICT**  
**November 2006**

Region / District	Employed	Unemployed	Unemployment Rate	Unable to Work	Unknown	Non Reporting	Total Population
Chester	1,047	449	30%	223	9	580	2,308
Philadelphia	3,011	2,082	41%	894	20	2,837	8,844
<b>EASTERN REGION</b>	<b>4,058</b>	<b>2,531</b>	<b>38%</b>	<b>1,117</b>	<b>29</b>	<b>3,417</b>	<b>11,152</b>
Allentown	1,407	495	26%	402	1	1,022	3,327
Harrisburg	1,960	526	21%	310	4	969	3,769
Scranton	861	193	18%	184	0	328	1,566
Williamsport	521	108	17%	75	0	117	821
<b>CENTRAL REGION</b>	<b>4,749</b>	<b>1,322</b>	<b>22%</b>	<b>971</b>	<b>5</b>	<b>2,436</b>	<b>9,483</b>
Altoona	563	162	22%	177	1	234	1,137
Mercer	1,045	579	36%	430	1	430	2,485
Erie	544	225	29%	180	2	324	1,275
Pittsburgh	1,654	483	23%	732	1	1,039	3,909
<b>WESTERN REGION</b>	<b>3,806</b>	<b>1,449</b>	<b>28%</b>	<b>1,519</b>	<b>5</b>	<b>2,027</b>	<b>8,806</b>
<b>TOTAL</b>	<b>12,613</b>	<b>5,302</b>	<b>30%</b>	<b>3,607</b>	<b>39</b>	<b>7,880</b>	<b>29,441</b>

**Table 7  
BOARD DECISIONS  
November 2006**

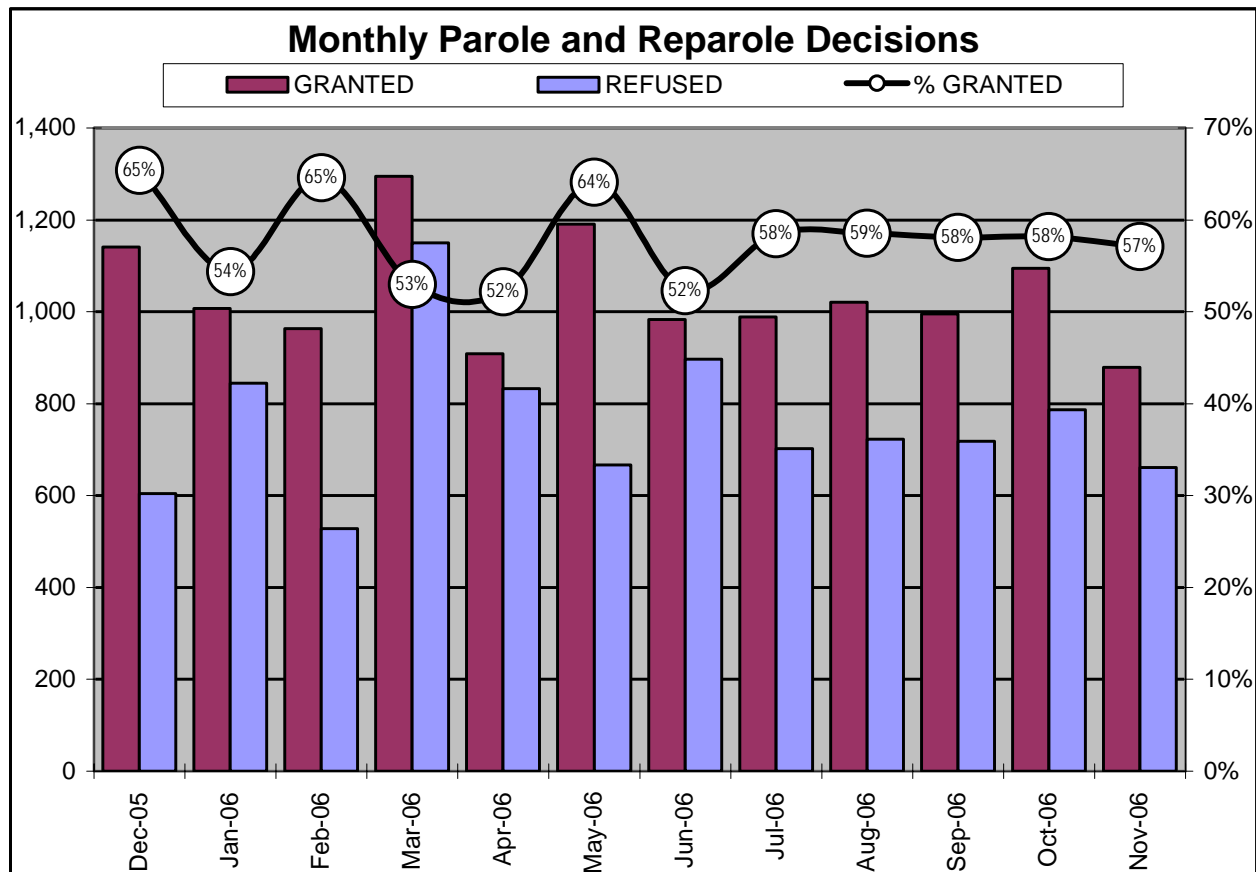
<b>Type of Decision</b>		<b>Total</b>
Parole / Reparole to Street		785
Parole / Reparole to Detainer		94
Refused		661
Total Considered		1,540
Percent Granted		57%
Recommitments		453
Refer to Prior Action		121
Assigned by Courts		291
Other Decisions		627
<b>Total Decisions</b>		<b>3,032</b>

**Parole / Reparole Decisions November 2006**



**Table 8**  
**MONTHLY PAROLE and REPAROLE DECISIONS**  
**November 2006**

MONTH/YEAR	GRANTED	REFUSED	CONSIDERED	% GRANTED
Dec-05	1,141	604	1,745	65%
Jan-06	1,007	845	1,852	54%
Feb-06	963	528	1,491	65%
Mar-06	1,295	1,150	2,445	53%
Apr-06	909	833	1,742	52%
May-06	1,191	667	1,858	64%
Jun-06	983	897	1,880	52%
Jul-06	989	702	1,691	58%
Aug-06	1,021	723	1,744	59%
Sep-06	995	718	1,713	58%
Oct-06	1,095	787	1,882	58%
Nov-06	879	661	1,540	57%
<b>Monthly Avg Prior 12 Mo</b>	<b>1,039</b>	<b>760</b>	<b>1,799</b>	<b>58%</b>



## PBPP Population Breakdown By Place of Incarceration/Jurisdiction – November 2006

Monthly Count of Board Actions							
	Non-SCI			SCI			
Type of Decision	Parole	Refuse	Total	Parole	Refuse	Total	Total Board Actions
January 2006	78	44	122	929	801	1,730	<b>1,852</b>
February 2006	76	34	110	887	494	1,381	<b>1,491</b>
March 2006	98	62	160	1,197	1,088	2,285	<b>2,445</b>
April 2006	88	51	139	822	781	1,603	<b>1,742</b>
May 2006	102	42	144	1,089	625	1,714	<b>1,858</b>
June 2006	81	56	137	902	841	1,743	<b>1,880</b>
July 2006	73	24	97	916	678	1,594	<b>1,691</b>
August 2006	86	44	130	935	679	1,614	<b>1,744</b>
September 2006	84	38	122	911	680	1,591	<b>1,713</b>
October 2006	72	44	116	1,023	743	1,766	<b>1,882</b>
November 2006	88	35	123	791	626	1,417	<b>1,540</b>
<b>2006 Total</b>	<b>926</b>	<b>474</b>	<b>1,400</b>	<b>10,402</b>	<b>8,036</b>	<b>18,438</b>	<b>19,838</b>

Offender Status - November 2006					
Status	State Prison	County Prison	County Sentence	Other States Cases	Total
Supervision	13,899	1,228	3,663	2,771	21,561
Absconder	1,267	75	216	1	1,559
Detention	4,933	401	790	197	6,321
<b>Total</b>	<b>20,099</b>	<b>1,704</b>	<b>4,669</b>	<b>2,969</b>	<b>29,441</b>

PBPP Monthly Population Profile						
Offender Status	Jun 06	Jul 06	Aug 06	Sep 06	Oct 06	Nov 06
<b>State sentence from state institution</b>	<b>19,898</b>	<b>19,950</b>	<b>20,002</b>	<b>20,081</b>	<b>20,108</b>	<b>20,099</b>
<i>Supervision</i>	13,977	13,934	13,844	13,792	13,877	13,899
<i>Absconder</i>	1,311	1,342	1,326	1,298	1,261	1,267
<i>Detention</i>	4,610	4,674	4,832	4,991	4,970	4,933
<b>State sentence from County Prison</b>	<b>1,679</b>	<b>1,673</b>	<b>1,674</b>	<b>1,679</b>	<b>1,690</b>	<b>1,704</b>
<i>Supervision</i>	1,246	1,224	1,219	1,229	1,228	1,228
<i>Absconder</i>	76	81	76	74	68	75
<i>Detention</i>	357	368	379	376	394	401
<b>County sentence Prob &amp; Parole</b>	<b>4,577</b>	<b>4,565</b>	<b>4,586</b>	<b>4,659</b>	<b>4,678</b>	<b>4,669</b>
<i>Supervision</i>	3,638	3,613	3,602	3,660	3,666	3,663
<i>Absconder</i>	203	204	205	217	220	216
<i>Detention</i>	736	748	779	782	792	790
<b>Other state's sentence Prob &amp; Parole</b>	<b>2,989</b>	<b>2,973</b>	<b>2,958</b>	<b>2,942</b>	<b>2,975</b>	<b>2,969</b>
<i>Supervision</i>	2,789	2,767	2,741	2,725	2,766	2,771
<i>Absconder</i>	2	2	2	2	1	1
<i>Detention</i>	198	204	215	215	208	197
<b>PBPP Population end of month</b>	<b>29,143</b>	<b>29,161</b>	<b>29,220</b>	<b>29,361</b>	<b>29,451</b>	<b>29,441</b>



## PBPP Population Breakdown By Place of Incarceration/Jurisdiction – November 2006

Additions and Deletions						
	Jun 06	Jul 06	Aug 06	Sep 06	Oct 06	Nov-06
<b>Total Additions</b>	<b>1,216</b>	<b>1,101</b>	<b>1,231</b>	<b>1,086</b>	<b>1,256</b>	<b>1,151</b>
State sentence - SCI	759	727	751	651	783	719
State sentence - Cnty Prison	81	57	82	73	75	69
County sentence Prob & Parole	191	196	238	225	213	212
Other state's sentence	185	121	160	137	185	151
<b>Total Deletions</b>	<b>1,191</b>	<b>1,082</b>	<b>1,157</b>	<b>953</b>	<b>1,167</b>	<b>1,153</b>
<b>State sentence - SCI</b>	<b>750</b>	<b>648</b>	<b>652</b>	<b>539</b>	<b>720</b>	<b>704</b>
<i>Technical Violator</i>	314	206	210	149	257	258
<i>Convicted Violator</i>	137	129	110	72	136	134
<i>Maximum Expiration</i>	266	287	299	291	288	268
<i>Other Case Closure</i>	33	26	33	27	39	44
<b>State sentence - Cnty Prison</b>	<b>59</b>	<b>54</b>	<b>74</b>	<b>68</b>	<b>67</b>	<b>55</b>
<i>Technical Violator</i>	19	11	13	12	14	16
<i>Convicted Violator</i>	10	6	6	12	5	5
<i>Maximum Expiration</i>	29	35	51	43	43	32
<i>Other Case Closure</i>	1	2	4	1	5	2
<b>County sentence Prob &amp; Parole</b>	<b>237</b>	<b>242</b>	<b>256</b>	<b>189</b>	<b>227</b>	<b>233</b>
<i>Technical Violator</i>	43	52	50	37	38	35
<i>Convicted Violator</i>	18	22	27	21	23	19
<i>Maximum Expiration</i>	127	122	129	92	125	122
<i>Other Case Closure</i>	49	46	50	39	41	57
<b>Other state's sentence</b>	<b>145</b>	<b>148</b>	<b>175</b>	<b>157</b>	<b>153</b>	<b>161</b>
<i>Technical Violator</i>	0	3	1	2	0	0
<i>Convicted Violator</i>	1	2	5	1	4	1
<i>Maximum Expiration</i>	59	57	64	71	42	64
<i>Other Case Closure</i>	85	76	105	83	107	96
<b>PBPP Population end of month</b>	<b>29,143</b>	<b>29,161</b>	<b>29,220</b>	<b>29,361</b>	<b>29,451</b>	<b>29,441</b>