

COMMONWEALTH OF PENNSYLVANIA

Board of Probation and Parole

MONTHLY PROGRAM REPORT

October 2006



Edward G. Rendell
Governor

Catherine C. McVey
Chairman

Michael L. Green
Member

Jeffrey R. Imboden
Member

Matthew T. Mangino, Esq
Member

Benjamin A. Martinez
Member

Gerard N. Massaro, Ph.D.
Member

Michael M. Webster
Member

Lloyd A. White
Member

Carol Lavery
Victim Advocate

PBPP
AN EQUAL OPPORTUNITY EMPLOYER

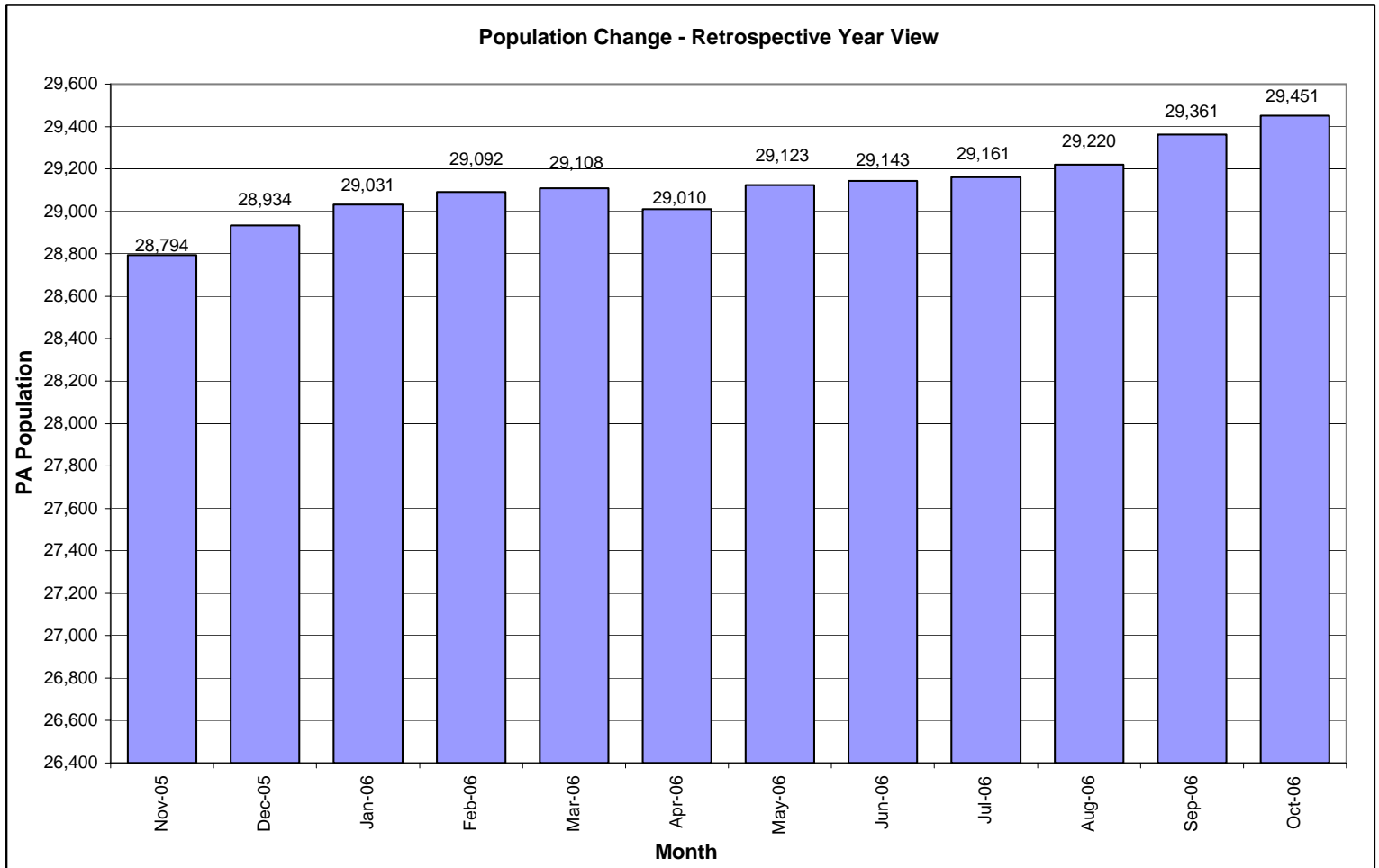
**Table 1
WORKLOAD AND POPULATION CHANGES BY REGION / DISTRICT
October 2006**

REGION / DISTRICT	Beginning Fiscal Yr ¹ July 2006	Current Month Population	Fiscal YTD Index	Additions	Deletions		Number of Agents ²	Average Workload	Total Workload
					Recommits/ Revocations	Other Deletions			
CHESTER	2,303	2,303	100	94	44	62	33	128	4,225
PHILADELPHIA	8,845	8,846	100	362	127	199	111	141	15,633
EASTERN REGION	11,148	11,149	100	456	171	261	144	138	19,858
ALLENTOWN	3,265	3,332	102	138	62	53	40	148	5,920
HARRISBURG	3,737	3,811	102	159	66	80	48	144	6,935
SCRANTON	1,558	1,583	102	77	22	54	22	136	2,999
WILLIAMSPORT	827	817	99	30	13	22	13	124	1,617
CENTRAL REGION	9,387	9,543	102	404	163	209	123	142	17,470
ALTOONA	1,075	1,124	105	42	13	18	16	144	2,310
MERCER	2,446	2,470	101	141	46	97	37	134	4,957
ERIE	1,246	1,269	102	51	14	31	16	152	2,434
PITTSBURGH	3,859	3,896	101	162	70	74	59	123	7,263
WESTERN REGION	8,626	8,759	102	396	143	220	128	133	16,963
TOTAL Supervised	29,161	29,451	101	1,256	477	690	395	137	54,291

¹ effective June 30

² Filled agent positions

PA Offenders in Other States	2,723	2,764	102	56	3	41
-------------------------------------	--------------	--------------	------------	-----------	----------	-----------



**Table 2
SUPERVISED POPULATION ADDITIONS AND DELETIONS
October 2006**

Population Additions and Deletions	Parole	ReParole	Special County Probation	Special County Parole	Other States' Parole	Other States' Probation	Monthly Total	Fiscal YTD Total
ADDITIONS	631	227	155	58	25	160	1,256	4,674
DELETIONS-RECOMMITMENTS								
<i>Convicted Parole Violator</i>								
State Corrections	104	32	1	0	0	0	137	456
County Corrections	5	0	14	8	1	0	28	113
Other States	0	0	0	0	1	2	3	11
Total Convicted Parole Violator	109	32	15	8	2	2	168	580
<i>Technical Parole Violator</i>								
State Corrections	181	76	4	0	0	0	261	838
County Corrections	11	3	22	12	0	0	48	210
Other States	0	0	0	0	0	0	0	7
Total Technical Parole Violator	192	79	26	12	0	0	309	1,055
TOTAL RECOMMITMENTS	301	111	41	20	2	2	477	1,635
Deletion Maximum Discharge	259	72	88	37	5	37	498	2,039
Deletion Death	16	3	1	0	0	0	20	89
Deletion Other	22	3	36	4	18	89	172	596
TOTAL DELETIONS	598	189	166	61	25	128	1,167	4,359

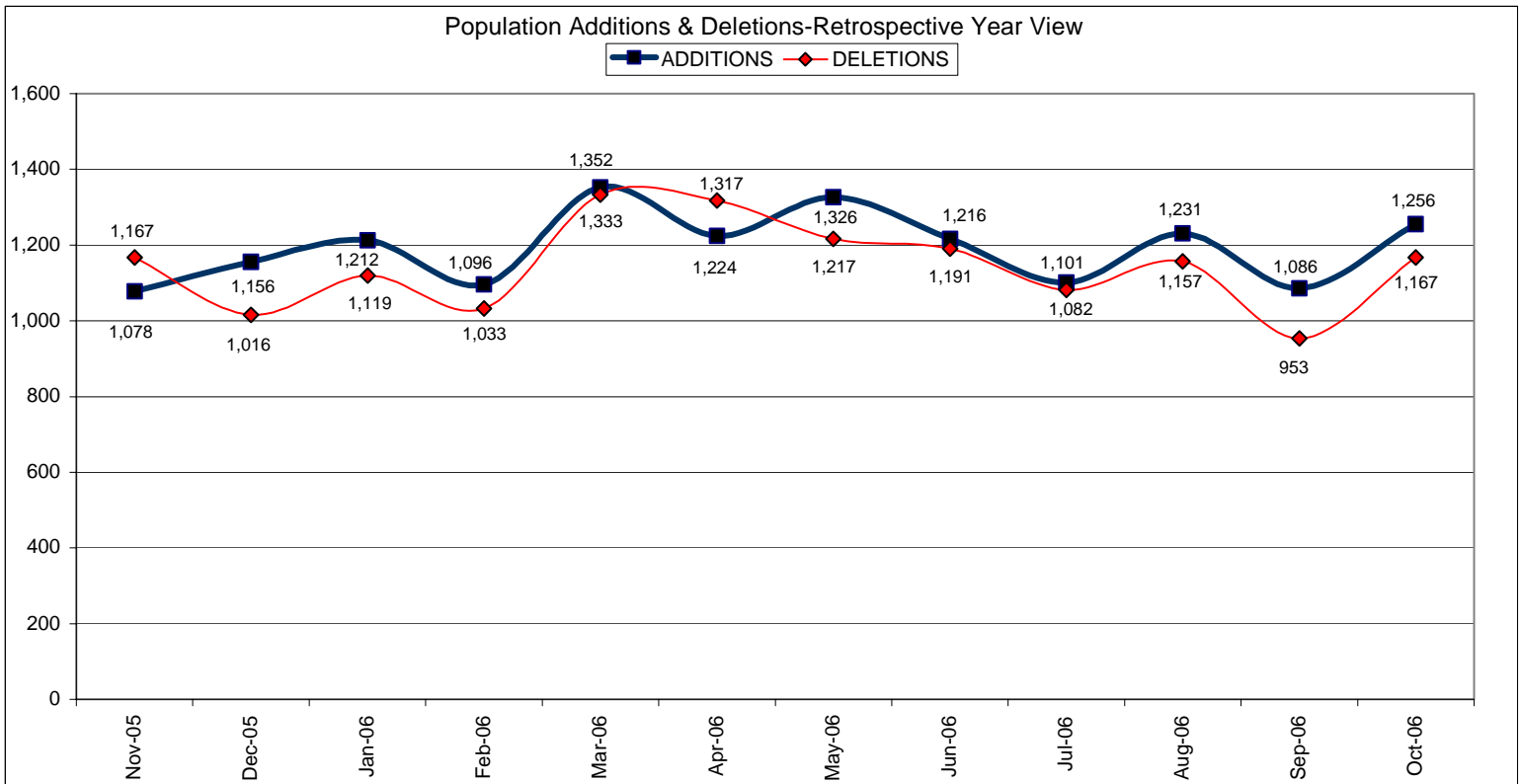


Table 3
SUPERVISED POPULATION BY ORIGINATING JURISDICTION and REGION / DISTRICT
October 2006

Region / District	PA Parole State Sentence				County		Other States		Total Population
	State Prisons	Boot Camp	County Prisons	Subtotal	Special Probation	Special Parole	Parole	Probation	
Chester	1,385	92	225	1,702	258	3	53	287	2,303
Philadelphia	6,836	232	356	7,424	713	4	114	591	8,846
Eastern Region	8,221	324	581	9,126	971	7	167	878	11,149
Allentown	2,114	117	375	2,606	258	5	69	394	3,332
Harrisburg	2,685	211	206	3,102	302	3	59	345	3,811
Scranton	838	29	232	1,099	89	5	67	323	1,583
Williamsport	508	26	59	593	104	9	15	96	817
Central Region	6,145	383	872	7,400	753	22	210	1,158	9,543
Altoona	697	29	87	813	181	19	17	94	1,124
Mercer	546	12	18	576	1,162	658	9	65	2,470
Erie	883	31	48	962	187	41	21	58	1,269
Pittsburgh	2,641	196	84	2,921	627	50	63	235	3,896
Western Region	4,767	268	237	5,272	2,157	768	110	452	8,759
Total	19,133	975	1,690	21,798	3,881	797	487	2,488	29,451
Percent of Total	65%	3%	6%	74%	13%	3%	2%	8%	100%

Table 4
SUPERVISED POPULATION BY GRADE OF SUPERVISION and REGION / DISTRICT
October 2006

Region / District	Reporting						Non-Reporting		Total Population
	Enhanced	Maximum	Medium	Minimum	Not Classified	Subtotal	Absconder	Detainees	
Chester	12	567	519	610	2	1,710	78	515	2,303
Philadelphia	60	2,550	1,387	1,986	9	5,992	737	2,117	8,846
Eastern Region	72	3,117	1,906	2,596	11	7,702	815	2,632	11,149
Allentown	12	675	640	973	3	2,303	236	793	3,332
Harrisburg	31	803	588	1,359	19	2,800	165	846	3,811
Scranton	10	236	339	679	0	1,264	28	291	1,583
Williamsport	3	80	152	470	2	707	8	102	817
Central Region	56	1,794	1,719	3,481	24	7,074	437	2,032	9,543
Altoona	17	198	293	386	1	895	29	200	1,124
Mercer	4	267	592	1,188	4	2,055	84	331	2,470
Erie	7	209	275	460	1	952	37	280	1,269
Pittsburgh	54	907	847	1,050	1	2,859	148	889	3,896
Western Region	82	1,581	2,007	3,084	7	6,761	298	1,700	8,759
Total	210	6,492	5,632	9,161	42	21,537	1,550	6,364	29,451
Percent of Total	1%	22%	19%	31%	0%	73%	5%	22%	100%

Table 5
SUPERVISED POPULATION BY GENDER, RACE and REGION / DISTRICT
October 2006

Region / District	Male			Female			Percent Male	Percent Female	Total Population
	White	Non White	Total	White	Non White	Total			
Chester	882	1,259	2,141	97	65	162	93%	7%	2,303
Philadelphia	997	7,290	8,287	118	441	559	94%	6%	8,846
EASTERN REGION	1,879	8,549	10,428	215	506	721	94%	6%	11,149
Allentown	1,349	1,639	2,988	206	138	344	90%	10%	3,332
Harrisburg	1,667	1,708	3,375	274	162	436	89%	11%	3,811
Scranton	1,082	304	1,386	171	26	197	88%	12%	1,583
Williamsport	597	73	670	127	20	147	82%	18%	817
CENTRAL REGION	4,695	3,724	8,419	778	346	1,124	88%	12%	9,543
Altoona	865	124	989	120	15	135	88%	12%	1,124
Mercer	1,599	356	1,955	436	79	515	79%	21%	2,470
Erie	690	392	1,082	141	46	187	85%	15%	1,269
Pittsburgh	1,632	1,904	3,536	227	133	360	91%	9%	3,896
WESTERN REGION	4,786	2,776	7,562	924	273	1,197	86%	14%	8,759
TOTAL	11,360	15,049	26,409	1,917	1,125	3,042	90%	10%	29,451

Table 6
SUPERVISED POPULATION BY EMPLOYMENT STATUS and REGION / DISTRICT
October 2006

Region / District	Employed	Unemployed	Unemployment Rate	Unable to Work	Unknown	Non Reporting	Total Population
Chester	1,051	434	29%	217	8	593	2,303
Philadelphia	3,035	2,065	40%	887	5	2,854	8,846
EASTERN REGION	4,086	2,499	38%	1,104	13	3,447	11,149
Allentown	1,343	563	30%	397	0	1,029	3,332
Harrisburg	1,996	471	19%	331	2	1,011	3,811
Scranton	850	230	21%	184	0	319	1,583
Williamsport	490	143	23%	74	0	110	817
CENTRAL REGION	4,679	1,407	23%	986	2	2,469	9,543
Altoona	559	157	22%	179	0	229	1,124
Mercer	1,079	548	34%	427	1	415	2,470
Erie	550	222	29%	179	1	317	1,269
Pittsburgh	1,644	488	23%	727	0	1,037	3,896
WESTERN REGION	3,832	1,415	27%	1,512	2	1,998	8,759
TOTAL	12,597	5,321	30%	3,602	17	7,914	29,451

**Table 7
BOARD DECISIONS
October 2006**

Type of Decision		Total
Parole / Reparole to Street		974
Parole / Reparole to Detainer		121
Refused		787
Total Considered		1,882
Percent Granted		58%
Recommitments		532
Refer to Prior Action		135
Assigned by Courts		458
Other Decisions		781
Total Decisions		3,788

Parole / Reparole Decisions October 2006

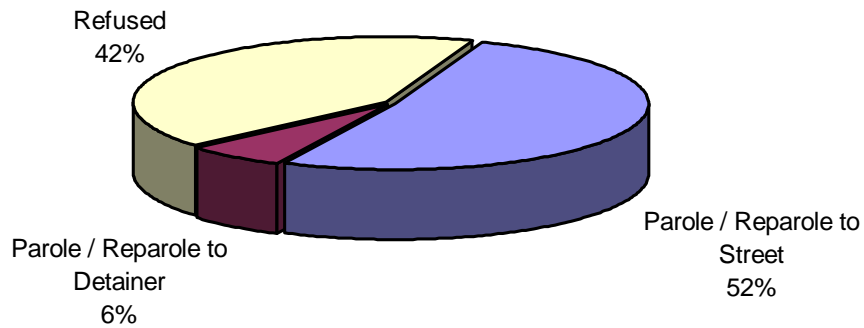
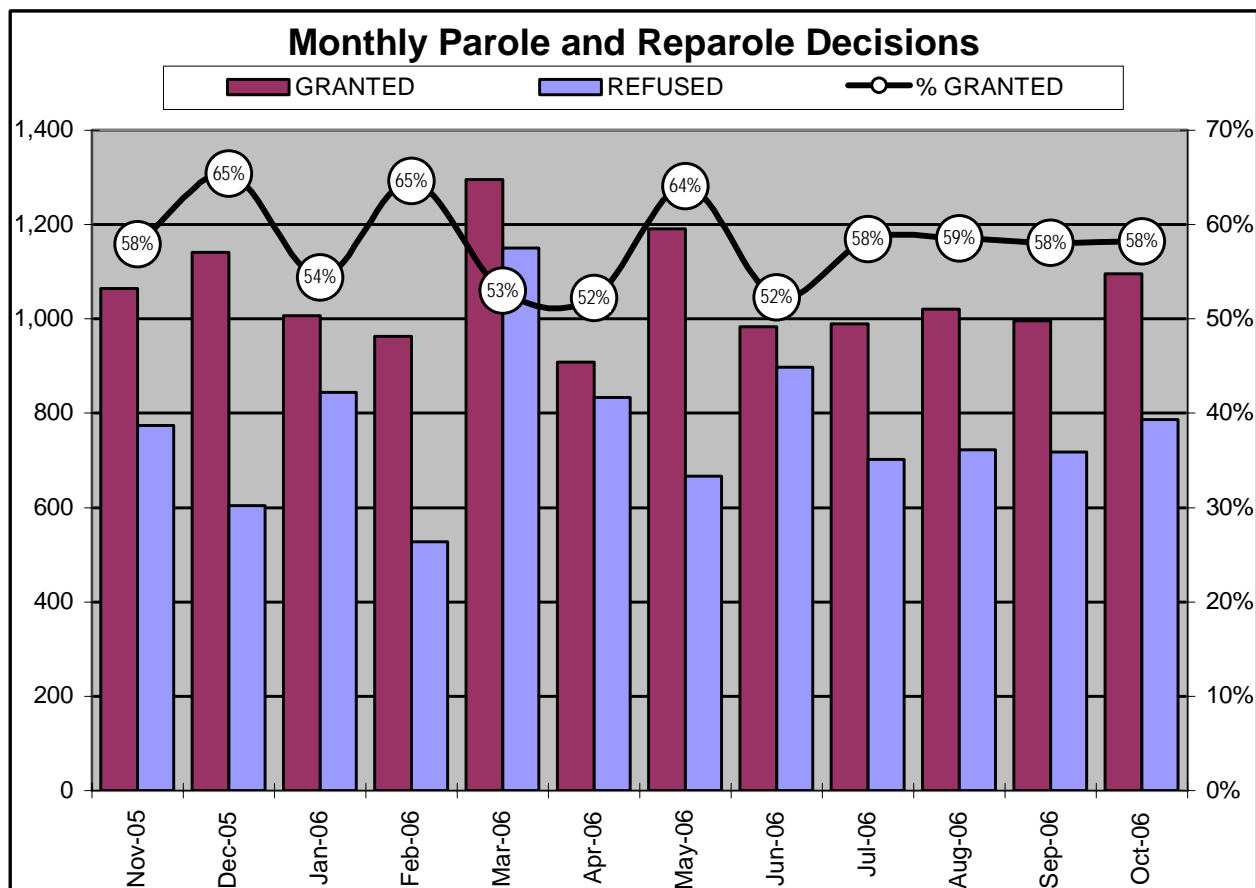


Table 8
MONTHLY PAROLE and REPAROLE DECISIONS
October 2006

MONTH/YEAR	GRANTED	REFUSED	CONSIDERED	% GRANTED
Nov-05	1,065	774	1,839	58%
Dec-05	1,141	604	1,745	65%
Jan-06	1,007	845	1,852	54%
Feb-06	963	528	1,491	65%
Mar-06	1,295	1,150	2,445	53%
Apr-06	909	833	1,742	52%
May-06	1,191	667	1,858	64%
Jun-06	983	897	1,880	52%
Jul-06	989	702	1,691	58%
Aug-06	1,021	723	1,744	59%
Sep-06	995	718	1,713	58%
Oct-06	1,095	787	1,882	58%
Monthly Avg Prior 12 Mo	1,055	769	1,824	58%



PBPP Population Breakdown By Place of Incarceration/Jurisdiction – October 2006

Monthly Count of Board Actions							
Type of Decision	Non-SCI			SCI			Total Board Actions
	Parole	Refuse	Total	Parole	Refuse	Total	
January 2006	78	44	122	929	801	1,730	1,852
February 2006	76	34	110	887	494	1,381	1,491
March 2006	98	62	160	1,197	1,088	2,285	2,445
April 2006	88	51	139	822	781	1,603	1,742
May 2006	102	42	144	1,089	625	1,714	1,858
June 2006	81	56	137	902	841	1,743	1,880
July 2006	73	24	97	916	678	1,594	1,691
August 2006	86	44	130	935	679	1,614	1,744
September 2006	84	38	122	911	680	1,591	1,713
October 2006	72	44	116	1,023	743	1,766	1,882
2006 Total	838	439	1,277	9,611	7,410	17,021	18,298

Offender Status - October 2006					
Status	State Prison	County Prison	County Sentence	Other States Cases	Total
Supervision	13,877	1,228	3,666	2,766	21,537
Absconder	1,261	68	220	1	1,550
Detention	4,970	394	792	208	6,364
Total	20,108	1,690	4,678	2,975	29,451

PBPP Monthly Population Profile						
Offender Status	May 06	Jun 06	Jul 06	Aug 06	Sep 06	Oct 06
State sentence from state institution	19,950	19,898	19,950	20,002	20,081	20,108
Supervision	14,003	13,977	13,934	13,844	13,792	13,877
Absconder	1,315	1,311	1,342	1,326	1,298	1,261
Detention	4,632	4,610	4,674	4,832	4,991	4,970
State sentence from County Prison	1,673	1,679	1,673	1,674	1,679	1,690
Supervision	1,244	1,246	1,224	1,219	1,229	1,228
Absconder	75	76	81	76	74	68
Detention	354	357	368	379	376	394
County sentence Prob & Parole	4,562	4,577	4,565	4,586	4,659	4,678
Supervision	3,616	3,638	3,613	3,602	3,660	3,666
Absconder	210	203	204	205	217	220
Detention	736	736	748	779	782	792
Other state's sentence Prob & Parole	2,938	2,989	2,973	2,958	2,942	2,975
Supervision	2,751	2,789	2,767	2,741	2,725	2,766
Absconder	1	2	2	2	2	1
Detention	186	198	204	215	215	208
PBPP Population end of month	29,123	29,143	29,161	29,220	29,361	29,451

PBPP Population Breakdown By Place of Incarceration/Jurisdiction – October 2006

Additions and Deletions						
	May 06	Jun 06	Jul 06	Aug 06	Sep 06	Oct 06
Total Additions	1,326	1,216	1,101	1,231	1,086	1,256
State sentence - SCI	866	759	727	751	651	783
State sentence - Cnty Prison	90	81	57	82	73	75
County sentence Prob & Parole	213	191	196	238	225	213
Other state's sentence	157	185	121	160	137	185
Total Deletions	1,217	1,191	1,082	1,157	953	1,167
State sentence - SCI	760	750	648	652	539	720
<i>Technical Violator</i>	284	314	206	210	149	257
<i>Convicted Violator</i>	153	137	129	110	72	136
<i>Maximum Expiration</i>	288	266	287	299	291	288
<i>Other Case Closure</i>	35	33	26	33	27	39
State sentence - Cnty Prison	73	59	54	74	68	67
<i>Technical Violator</i>	18	19	11	13	12	14
<i>Convicted Violator</i>	13	10	6	6	12	5
<i>Maximum Expiration</i>	37	29	35	51	43	43
<i>Other Case Closure</i>	5	1	2	4	1	5
County sentence Prob & Parole	226	237	242	256	189	227
<i>Technical Violator</i>	38	43	52	50	37	38
<i>Convicted Violator</i>	20	18	22	27	21	23
<i>Maximum Expiration</i>	116	127	122	129	92	125
<i>Other Case Closure</i>	52	49	46	50	39	41
Other state's sentence	158	145	148	175	157	153
<i>Technical Violator</i>	2	0	3	1	2	0
<i>Convicted Violator</i>	5	1	2	5	1	4
<i>Maximum Expiration</i>	66	59	57	64	71	42
<i>Other Case Closure</i>	85	85	76	105	83	107
PBPP Population end of month	29,123	29,143	29,161	29,220	29,361	29,451