

COMMONWEALTH OF PENNSYLVANIA

Board of Probation and Parole

MONTHLY PROGRAM REPORT

August 2006



Edward G. Rendell
Governor

Catherine C. McVey
Chairman

Michael L. Green
Member

Jeffrey R. Imboden
Member

Matthew T. Mangino, Esq.
Member

Benjamin A. Martinez
Member

Gerard N. Massaro, Ph.D.
Member

Michael M. Webster
Member

Lloyd A. White
Member

Carol Lavery
Victim Advocate

PBPP
AN EQUAL OPPORTUNITY EMPLOYER

**Table 1
WORKLOAD AND POPULATION CHANGES BY REGION / DISTRICT
August 2006**

REGION / DISTRICT	Beginning Fiscal Yr ¹ July 2006	Current Month Population	Fiscal YTD Index	Additions	Deletions		Number of Agents ²	Average Workload	Total Workload
					Recommits/ Revocations	Other Deletions			
CHESTER	2,303	2,304	100	98	19	83	31	136	4,202
PHILADELPHIA	8,845	8,851	100	318	116	189	115	134	15,399
EASTERN REGION	11,148	11,155	100	416	135	272	146	134	19,601
ALLENTOWN	3,265	3,295	101	159	37	98	40	144	5,772
HARRISBURG	3,737	3,781	101	165	45	63	49	141	6,914
SCRANTON	1,558	1,552	100	76	29	49	22	136	2,988
WILLIAMSPORT	827	811	98	25	16	31	14	115	1,614
CENTRAL REGION	9,387	9,439	101	425	127	241	125	138	17,288
ALTOONA	1,075	1,093	102	45	15	25	16	141	2,251
MERCER	2,446	2,437	100	130	48	98	37	129	4,766
ERIE	1,246	1,243	100	49	26	26	17	139	2,364
PITTSBURGH	3,859	3,853	100	166	71	73	60	120	7,219
WESTERN REGION	8,626	8,626	100	390	160	222	130	128	16,600
TOTAL Supervised	29,161	29,220	100	1,231	422	735	401	133	53,489

¹ effective June 30

² Filled agent positions

PA Offenders in Other States	2,723	2,750	101	55	0	44
-------------------------------------	--------------	--------------	------------	-----------	----------	-----------

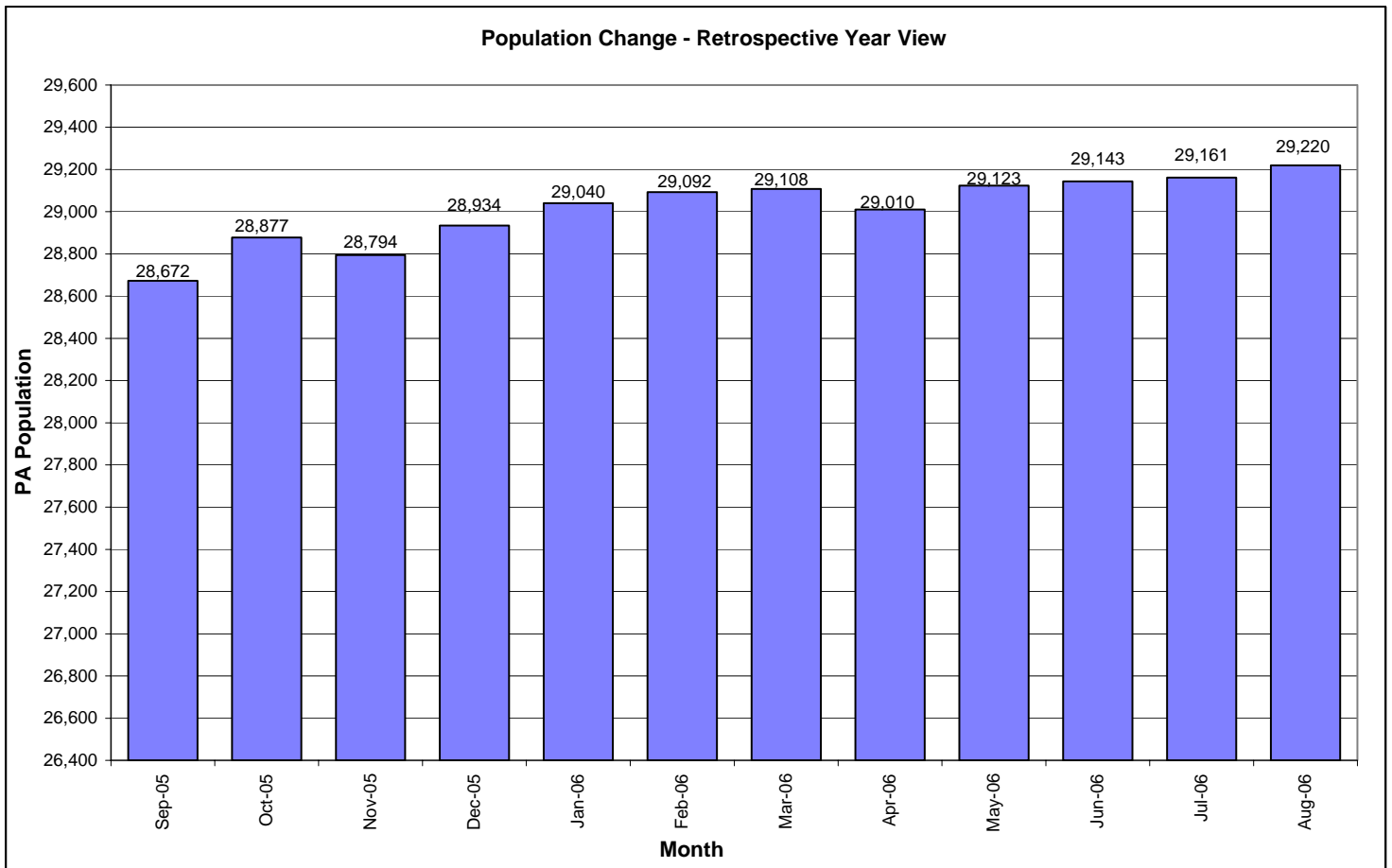


Table 2
SUPERVISED POPULATION ADDITIONS AND DELETIONS
August 2006

Population Additions and Deletions	Parole	ReParole	Special County Probation	Special County Parole	Other States' Parole	Other States' Probation	Monthly Total	Fiscal YTD Total
ADDITIONS	631	202	174	64	25	135	1,231	2,332
DELETIONS-RECOMMITMENTS								
<i>Convicted Parole Violator</i>								
State Corrections	86	24	4	0	0	0	114	243
County Corrections	6	0	18	5	0	0	29	56
Other States	0	0	0	0	0	5	5	7
Total Convicted Parole Violator	92	24	22	5	0	5	148	306
<i>Technical Parole Violator</i>								
State Corrections	143	67	1	0	0	0	211	425
County Corrections	11	1	38	11	0	0	61	116
Other States	1	0	0	0	0	1	2	5
Total Technical Parole Violator	155	68	39	11	0	1	274	546
TOTAL RECOMMITMENTS	247	92	61	16	0	6	422	852
Deletion Maximum Discharge	292	58	94	35	12	52	543	1,044
Deletion Death	18	8	3	0	0	3	32	51
Deletion Other	10	1	37	10	13	89	160	292
TOTAL DELETIONS	567	159	195	61	25	150	1,157	2,239

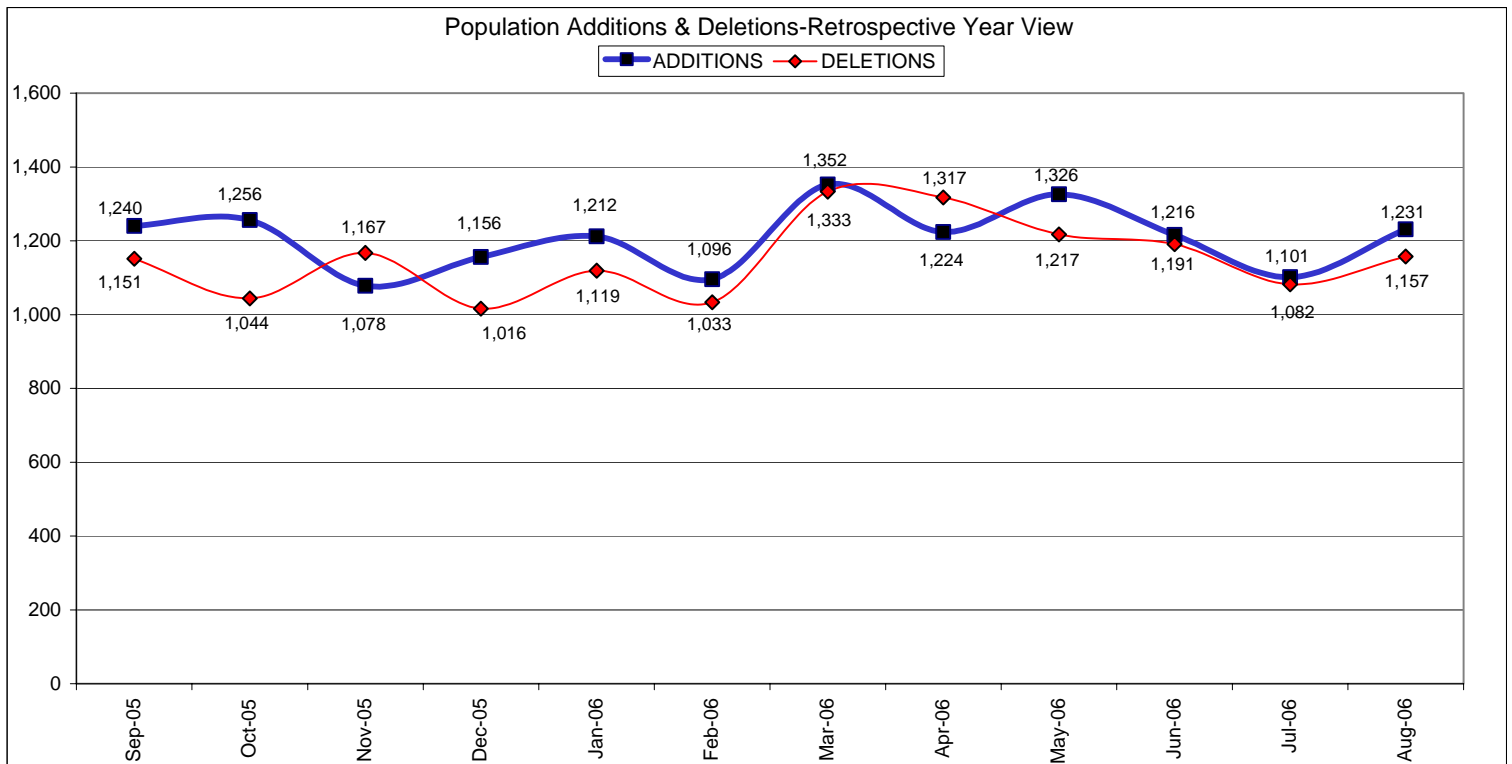


Table 3
SUPERVISED POPULATION BY ORIGINATING JURISDICTION and REGION / DISTRICT
August 2006

Region / District	PA Parole State Sentence				County		Other States		Total Population
	State Prisons	Boot Camp	County Prisons	Subtotal	Special Probation	Special Parole	Parole	Probation	
Chester	1,395	92	226	1,713	247	2	52	290	2,304
Philadelphia	6,842	239	365	7,446	697	2	114	592	8,851
Eastern Region	8,237	331	591	9,159	944	4	166	882	11,155
Allentown	2,084	124	373	2,581	243	6	68	397	3,295
Harrisburg	2,671	211	208	3,090	285	4	59	343	3,781
Scranton	831	34	227	1,092	83	5	61	311	1,552
Williamsport	513	26	60	599	97	9	18	88	811
Central Region	6,099	395	868	7,362	708	24	206	1,139	9,439
Altoona	677	29	79	785	182	17	19	90	1,093
Mercer	548	14	18	580	1,131	654	10	62	2,437
Erie	844	30	49	923	193	45	22	60	1,243
Pittsburgh	2,592	206	69	2,867	632	52	65	237	3,853
Western Region	4,661	279	215	5,155	2,138	768	116	449	8,626
Total	18,997	1,005	1,674	21,676	3,790	796	488	2,470	29,220
Percent of Total	65%	3%	6%	74%	13%	3%	2%	8%	100%

Table 4
SUPERVISED POPULATION BY GRADE OF SUPERVISION and REGION / DISTRICT
August 2006

Region / District	Reporting						Non-Reporting		Total Population
	Enhanced	Maximum	Medium	Minimum	Not Classified	Subtotal	Absconder	Detainees	
Chester	12	574	500	594	7	1,687	79	538	2,304
Philadelphia	56	2,567	1,477	1,886	30	6,016	761	2,074	8,851
Eastern Region	68	3,141	1,977	2,480	37	7,703	840	2,612	11,155
Allentown	9	703	626	964	4	2,306	230	759	3,295
Harrisburg	22	818	613	1,325	13	2,791	179	811	3,781
Scranton	12	220	329	675	2	1,238	37	277	1,552
Williamsport	0	76	160	460	2	698	6	107	811
Central Region	43	1,817	1,728	3,424	21	7,033	452	1,954	9,439
Altoona	20	191	278	388	2	879	36	178	1,093
Mercer	5	250	606	1,165	1	2,027	92	318	2,437
Erie	9	203	262	459	3	936	41	266	1,243
Pittsburgh	60	884	815	1,059	10	2,828	148	877	3,853
Western Region	94	1,528	1,961	3,071	16	6,670	317	1,639	8,626
Total	205	6,486	5,666	8,975	74	21,406	1,609	6,205	29,220
Percent of Total	1%	22%	19%	31%	0%	73%	6%	21%	100%

Table 5
SUPERVISED POPULATION BY GENDER, RACE and REGION / DISTRICT
August 2006

Region / District	Male			Female			Percent Male	Percent Female	Total Population
	White	Non White	Total	White	Non White	Total			
Chester	867	1,279	2,146	101	57	158	93%	7%	2,304
Philadelphia	1,012	7,281	8,293	117	441	558	94%	6%	8,851
EASTERN REGION	1,879	8,560	10,439	218	498	716	94%	6%	11,155
Allentown	1,328	1,624	2,952	202	141	343	90%	10%	3,295
Harrisburg	1,658	1,692	3,350	262	169	431	89%	11%	3,781
Scranton	1,067	297	1,364	164	24	188	88%	12%	1,552
Williamsport	583	77	660	130	21	151	81%	19%	811
CENTRAL REGION	4,636	3,690	8,326	758	355	1,113	88%	12%	9,439
Altoona	835	130	965	114	14	128	88%	12%	1,093
Mercer	1,580	354	1,934	423	80	503	79%	21%	2,437
Erie	694	375	1,069	128	46	174	86%	14%	1,243
Pittsburgh	1,604	1,883	3,487	227	139	366	91%	9%	3,853
WESTERN REGION	4,713	2,742	7,455	892	279	1,171	86%	14%	8,626
TOTAL	11,228	14,992	26,220	1,868	1,132	3,000	90%	10%	29,220

Table 6
SUPERVISED POPULATION BY EMPLOYMENT STATUS and REGION / DISTRICT
August 2006

Region / District	Employed	Unemployed	Unemployment Rate	Unable to Work	Unknown	Non Reporting	Total Population
Chester	973	478	33%	230	6	617	2,304
Philadelphia	3,100	2,019	39%	882	15	2,835	8,851
EASTERN REGION	4,073	2,497	38%	1,112	21	3,452	11,155
Allentown	1,116	753	40%	437	0	989	3,295
Harrisburg	1,719	775	31%	294	3	990	3,781
Scranton	690	355	34%	191	2	314	1,552
Williamsport	420	201	32%	77	0	113	811
CENTRAL REGION	3,945	2,084	35%	999	5	2,406	9,439
Altoona	541	155	22%	183	0	214	1,093
Mercer	1,040	560	35%	427	0	410	2,437
Erie	549	229	29%	157	1	307	1,243
Pittsburgh	1,597	485	23%	740	6	1,025	3,853
WESTERN REGION	3,727	1,429	28%	1,507	7	1,956	8,626
TOTAL	11,745	6,010	34%	3,618	33	7,814	29,220

**Table 7
BOARD DECISIONS
August 2006**

Type of Decision		Total
Parole / Reparole to Street		887
Parole / Reparole to Detainer		134
Refused		723
Total Considered		1,744
Percent Granted		59%
Recommitments		479
Refer to Prior Action		152
Assigned by Courts		458
Other Decisions		733
Total Decisions		3,566

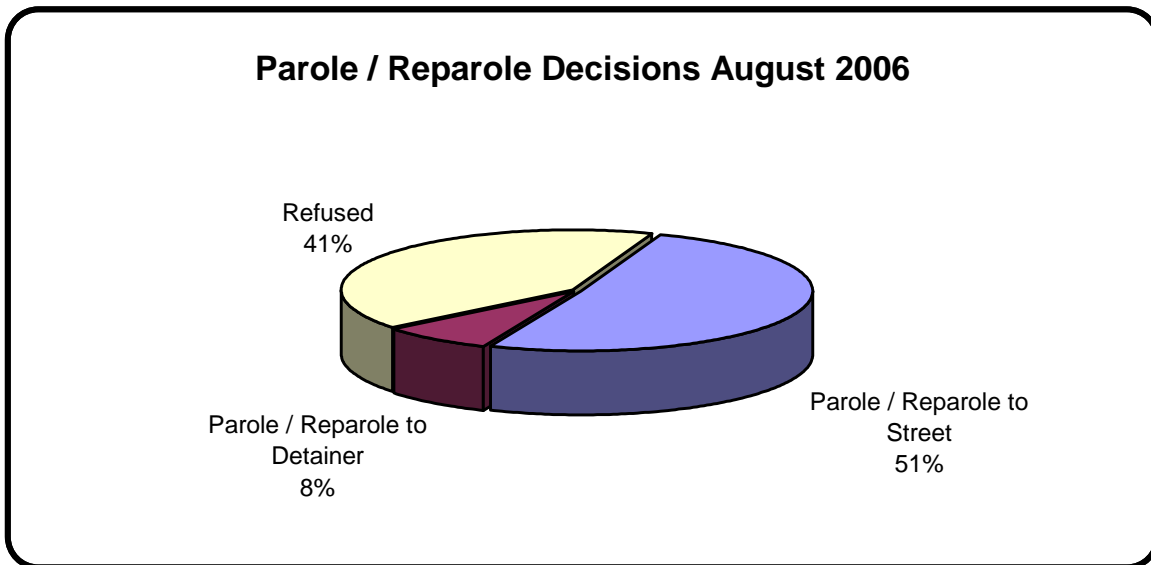
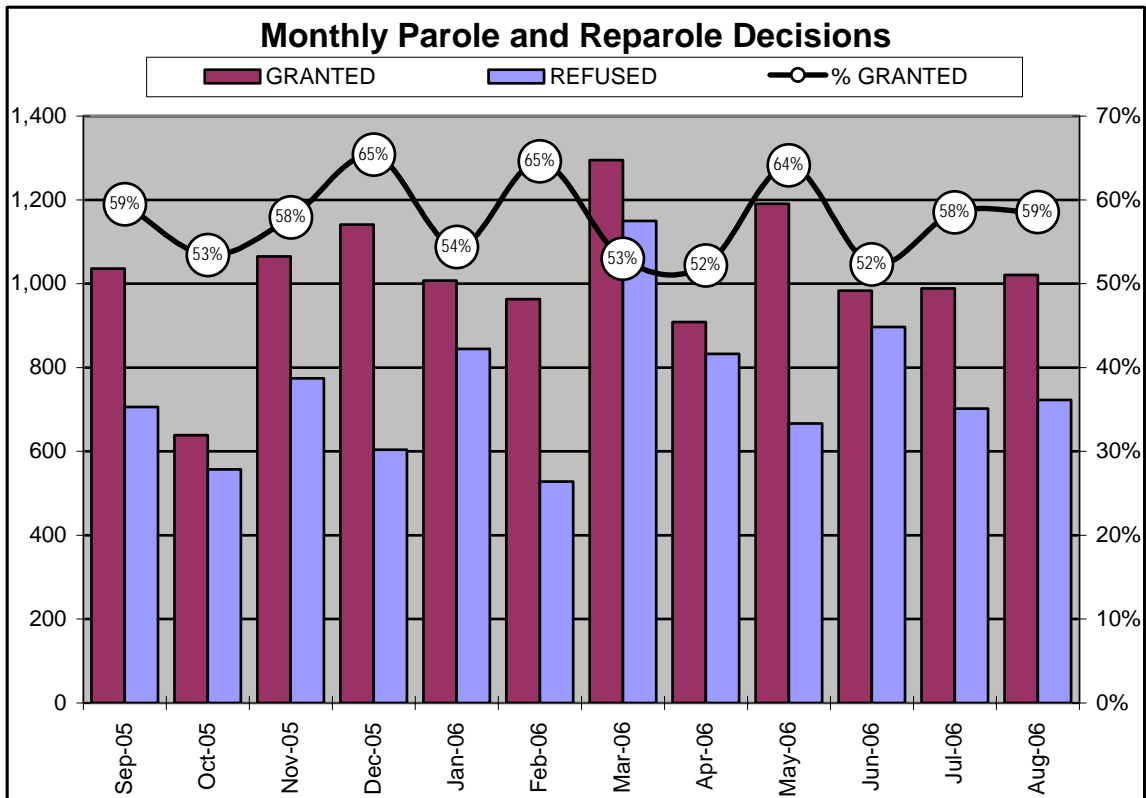


Table 8
MONTHLY PAROLE and REPAROLE DECISIONS
August 2006

MONTH/YEAR	GRANTED	REFUSED	CONSIDERED	% GRANTED
Sep-05	1,036	706	1,742	59%
Oct-05	639	557	1,196	53%
Nov-05	1,065	774	1,839	58%
Dec-05	1,141	604	1,745	65%
Jan-06	1,007	845	1,852	54%
Feb-06	963	528	1,491	65%
Mar-06	1,295	1,150	2,445	53%
Apr-06	909	833	1,742	52%
May-06	1,191	667	1,858	64%
Jun-06	983	897	1,880	52%
Jul-06	989	702	1,691	58%
Aug-06	1,021	723	1,744	59%
Monthly Avg Prior 12 Mo	1,020	749	1,769	58%



PBPP Population Breakdown By Place of Incarceration/Jurisdiction – August 2006

Monthly Count of Board Actions							
Type of Decision	Non-SCI			SCI			Total Board Actions
	Parole	Refuse	Total	Parole	Refuse	Total	
January 2006	78	44	122	929	801	1,730	1,852
February 2006	76	34	110	887	494	1,381	1,491
March 2006	98	62	160	1,197	1,088	2,285	2,445
April 2006	88	51	139	822	781	1,603	1,742
May 2006	102	42	144	1,089	625	1,714	1,858
June 2006	81	56	137	902	841	1,743	1,880
July 2006	73	24	97	916	678	1,594	1,691
August 2006	86	44	130	935	679	1,614	1,744
2006 Total	682	357	1,039	7,677	5,987	13,664	14,703

Offender Status- August 2006					
Status	State Prison	County Prison	County Sentence	Other States Cases	Total
Supervision	13,844	1,219	3,602	2,741	21,406
Absconder	1,326	76	205	2	1,609
Detention	4,832	379	779	215	6,205
Total	20,002	1,674	4,586	2,958	29,220

PBPP Monthly Population Profile						
Offender Status	Mar 06	Apr 06	May 06	Jun 06	Jul 06	Aug 06
State sentence from state institution	20,057	19,903	19,950	19,898	19,950	20,002
<i>Supervision</i>	13,902	14,002	14,003	13,977	13,934	13,844
<i>Absconder</i>	1,323	1,316	1,315	1,311	1,342	1,326
<i>Detention</i>	4,832	4,585	4,632	4,610	4,674	4,832
State sentence from County Prison	1,643	1,656	1,673	1,679	1,673	1,674
<i>Supervision</i>	1,210	1,240	1,244	1,246	1,224	1,219
<i>Absconder</i>	85	78	75	76	81	76
<i>Detention</i>	348	338	354	357	368	379
County sentence Prob & Parole	4,507	4,521	4,562	4,577	4,565	4,586
<i>Supervision</i>	3,546	3,599	3,616	3,638	3,613	3,602
<i>Absconder</i>	216	210	210	203	204	205
<i>Detention</i>	745	712	736	736	748	779
Other state's sentence Prob & Parole	2,901	2,930	2,938	2,989	2,973	2,958
<i>Supervision</i>	2,710	2,745	2,751	2,789	2,767	2,741
<i>Absconder</i>	1	1	1	2	2	2
<i>Detention</i>	190	184	186	198	204	215
PBPP Population end of month	29,108	29,010	29,123	29,143	29,161	29,220

PBPP Population Breakdown By Place of Incarceration/Jurisdiction – August 2006

Additions and Deletions						
	Mar 06	Apr 05	May 06	Jun 06	Jul 06	Aug 06
Total Additions	1,352	1,224	1,326	1,216	1,101	1,231
State sentence - SCI	835	762	866	759	727	751
State sentence - Cnty Prison	74	75	90	81	57	82
County sentence Prob & Parole	254	202	213	191	196	238
Other state's sentence	189	185	157	185	121	160
Total Deletions	1,333	1,317	1,217	1,191	1,082	1,157
State sentence - SCI	814	879	760	750	648	652
<i>Technical Violator</i>	348	408	284	314	206	210
<i>Convicted Violator</i>	130	208	153	137	129	110
<i>Maximum Expiration</i>	306	242	288	266	287	299
<i>Other Case Closure</i>	30	21	35	33	26	33
State sentence - Cnty Prison	78	58	73	59	54	74
<i>Technical Violator</i>	25	20	18	19	11	13
<i>Convicted Violator</i>	7	10	13	10	6	6
<i>Maximum Expiration</i>	42	26	37	29	35	51
<i>Other Case Closure</i>	4	2	5	1	2	4
County sentence Prob & Parole	268	221	226	237	242	256
<i>Technical Violator</i>	61	38	38	43	52	50
<i>Convicted Violator</i>	39	28	20	18	22	27
<i>Maximum Expiration</i>	103	103	116	127	122	129
<i>Other Case Closure</i>	65	52	52	49	46	50
Other state's sentence	173	159	158	145	148	175
<i>Technical Violator</i>	4	1	2	0	3	1
<i>Convicted Violator</i>	2	6	5	1	2	5
<i>Maximum Expiration</i>	71	60	66	59	57	64
<i>Other Case Closure</i>	96	92	85	85	76	105
PBPP Population end of month	29,108	29,010	29,123	29,143	29,161	29,220