

# COMMONWEALTH OF PENNSYLVANIA

## Board of Probation and Parole

### MONTHLY PROGRAM REPORT

November 2005



**Edward G. Rendell**  
Governor

Catherine C. McVey  
Chairman

Michael L. Green  
Member

Jeffrey R. Imboden  
Member

Benjamin Martinez  
Member

Gerard N. Massaro, Ph.D.  
Member

Sean R. Ryan  
Member

Michael M. Webster  
Member

Lloyd A. White  
Member

Victim Advocate

pbbb  
AN EQUAL OPPORTUNITY EMPLOYER

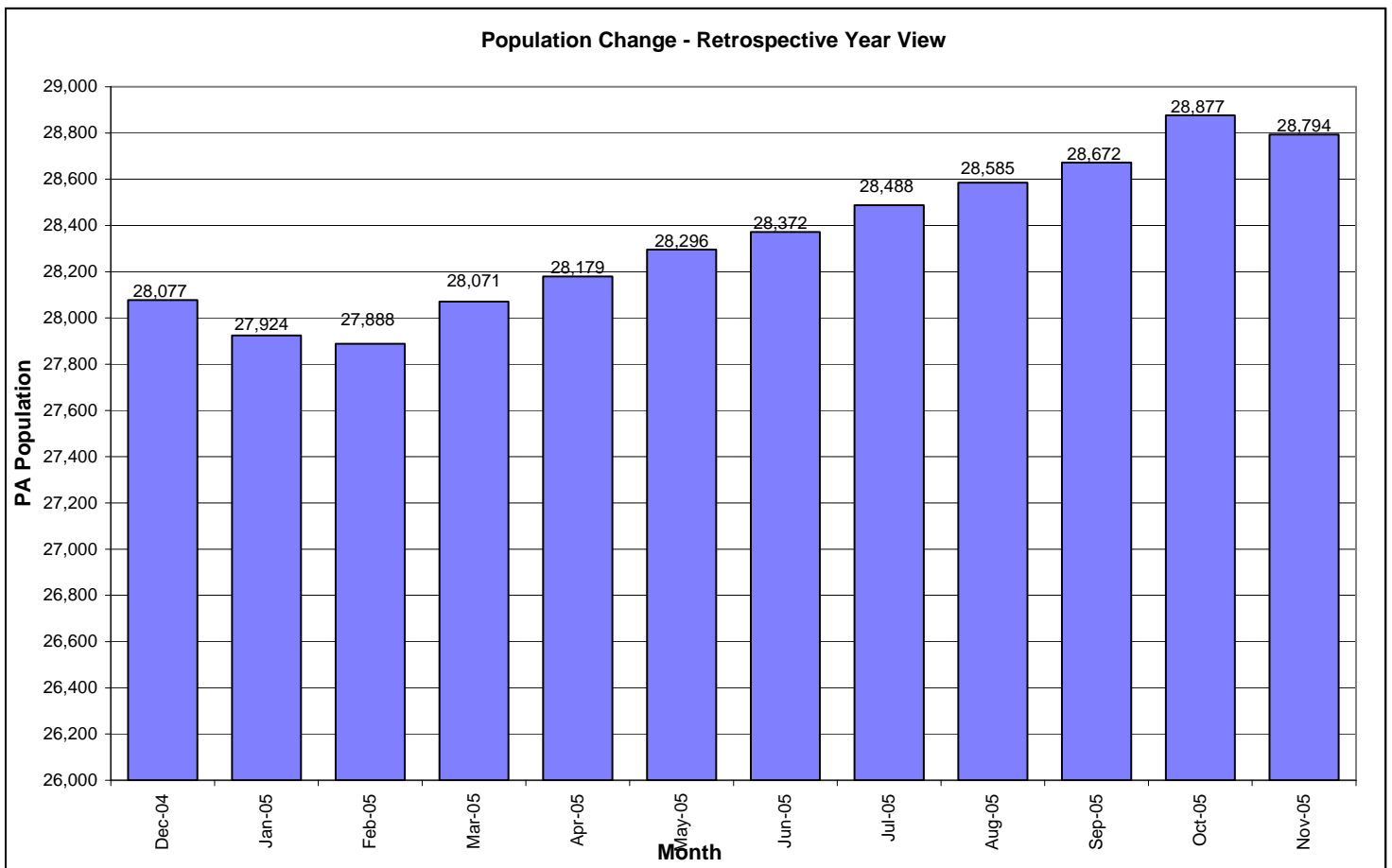
**Table 1  
WORKLOAD AND POPULATION CHANGES BY REGION / DISTRICT  
November 2005**

REGION / DISTRICT	Beginning Fiscal Yr <sup>1</sup> July 2005	Current Month Population	Fiscal YTD Index	Additions	Deletions		Number of Agents <sup>2</sup>	Average Workload	Total Workload
					Recommits/ Revocations	Other Deletions			
CHESTER	2,366	2,295	97	41	42	50	34	123	4,198
PHILADELPHIA	8,674	8,846	102	296	137	172	112	137	15,380
<b>EASTERN REGION</b>	<b>11,040</b>	<b>11,141</b>	<b>101</b>	<b>337</b>	<b>179</b>	<b>222</b>	<b>146</b>	<b>134</b>	<b>19,579</b>
ALLENTOWN	3,017	3,071	102	130	70	87	40	132	5,286
HARRISBURG	3,669	3,781	103	168	72	74	49	131	6,413
SCRANTON	1,444	1,506	104	68	33	35	22	130	2,870
WILLIAMSPORT	830	820	99	25	17	24	14	114	1,603
<b>CENTRAL REGION</b>	<b>8,960</b>	<b>9,178</b>	<b>102</b>	<b>391</b>	<b>192</b>	<b>220</b>	<b>125</b>	<b>129</b>	<b>16,172</b>
ALTOONA	1,044	1,026	98	28	14	20	16	126	2,018
MERCER	2,369	2,434	103	139	47	86	37	121	4,491
ERIE	1,135	1,173	103	54	27	30	18	121	2,180
PITTSBURGH	3,824	3,842	100	129	66	64	61	115	7,026
<b>WESTERN REGION</b>	<b>8,372</b>	<b>8,475</b>	<b>101</b>	<b>350</b>	<b>154</b>	<b>200</b>	<b>132</b>	<b>119</b>	<b>15,715</b>
<b>TOTAL Supervised</b>	<b>28,372</b>	<b>28,794</b>	<b>101</b>	<b>1,078</b>	<b>525</b>	<b>642</b>	<b>403</b>	<b>128</b>	<b>51,466</b>

<sup>1</sup> effective June 30

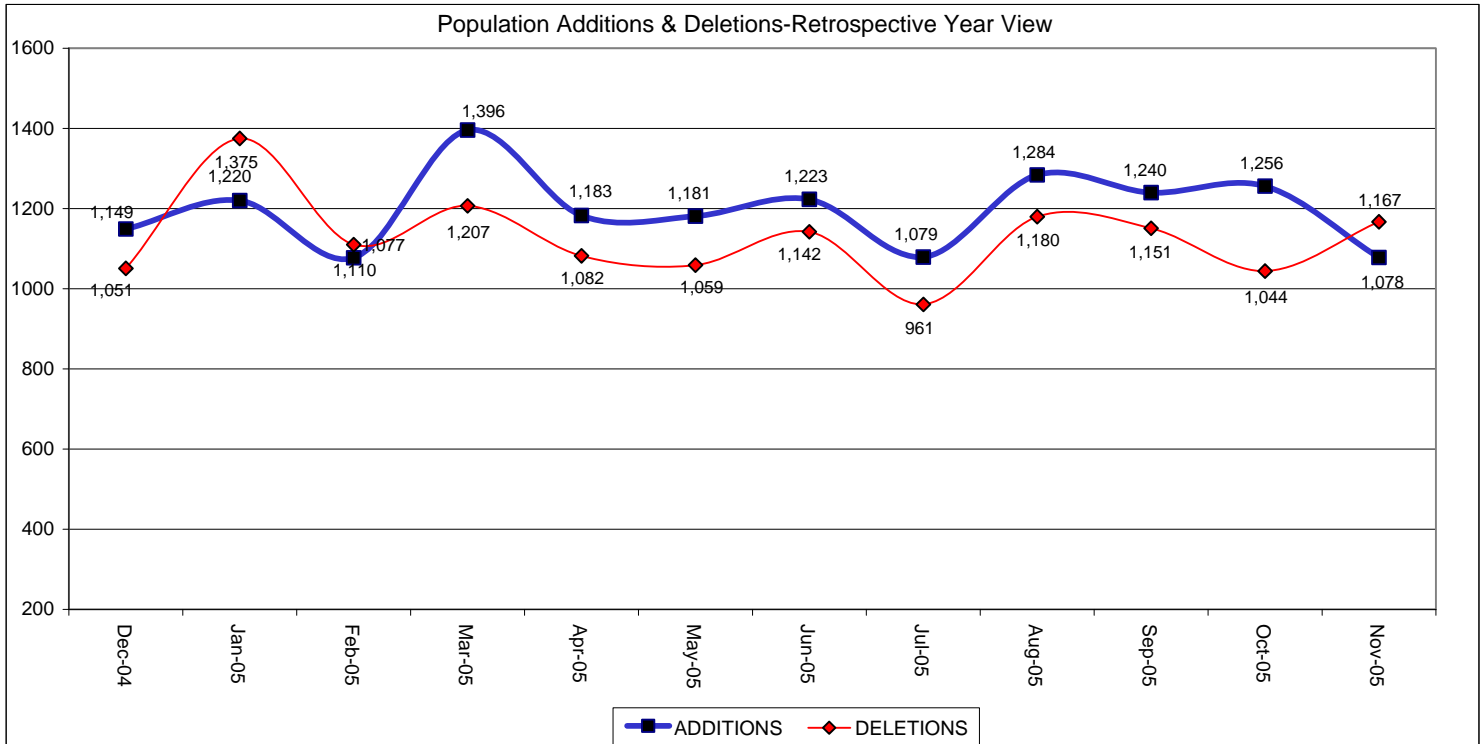
<sup>2</sup> Filled agent positions

PA Offenders in Other States	<b>2,659</b>	<b>2,731</b>	<b>103</b>	<b>40</b>	<b>9</b>	<b>26</b>
------------------------------	--------------	--------------	------------	-----------	----------	-----------



**Table 2  
SUPERVISED POPULATION ADDITIONS AND DELETIONS  
November 2005**

Population Additions and Deletions	Parole	ReParole	Special County Probation	Special County Parole	Other States' Parole	Other States' Probation	Monthly Total	Fiscal YTD Total
<b>ADDITIONS</b>	554	179	138	49	18	140	1,078	5,937
<b>DELETIONS-RECOMMITMENTS</b>								
<i>Convicted Parole Violator</i>								
State Corrections	96	25	2	0	0	0	123	580
County Corrections	7	2	17	7	0	0	33	137
Other States	0	0	0	0	0	1	1	6
<b>Total Convicted Parole Violator</b>	103	27	19	7	0	1	157	723
<i>Technical Parole Violator</i>								
State Corrections	198	109	5	0	0	0	312	1,423
County Corrections	13	2	35	6	0	0	56	285
Other States	0	0	0	0	0	0	0	7
<b>Total Technical Parole Violator</b>	211	111	40	6	0	0	368	1,715
<b>TOTAL RECOMMITMENTS</b>	314	138	59	13	0	1	525	2,438
Deletion Maximum Discharge	254	59	82	30	16	54	495	2,230
Deletion Death	9	3	1	2	0	3	18	103
Deletion Other	17	3	34	6	10	59	129	732
<b>TOTAL DELETIONS</b>	594	203	176	51	26	117	1,167	5,503



**Table 3**  
**SUPERVISED POPULATION BY ORIGINATING JURISDICTION and REGION / DISTRICT**  
**November 2005**

Region / District	PA Parole State Sentence				County		Other States		Total Population
	State Prisons	Boot Camp	County Prisons	Subtotal	Special Probation	Special Parole	Parole	Probation	
Chester	1,384	101	222	1,707	241	5	55	287	2,295
Philadelphia	6,962	251	369	7,582	617	5	123	519	8,846
<b>Eastern Region</b>	<b>8,346</b>	<b>352</b>	<b>591</b>	<b>9,289</b>	<b>858</b>	<b>10</b>	<b>178</b>	<b>806</b>	<b>11,141</b>
Allentown	1,962	117	348	2,427	214	6	53	371	3,071
Harrisburg	2,674	235	221	3,130	259	8	60	324	3,781
Scranton	786	29	224	1,039	90	2	55	320	1,506
Williamsport	534	26	56	616	80	7	21	96	820
<b>Central Region</b>	<b>5,956</b>	<b>407</b>	<b>849</b>	<b>7,212</b>	<b>643</b>	<b>23</b>	<b>189</b>	<b>1,111</b>	<b>9,178</b>
Altoona	639	22	78	739	151	25	16	95	1,026
Mercer	521	9	19	549	1,144	661	12	68	2,434
Erie	814	36	45	895	157	49	19	53	1,173
Pittsburgh	2,606	198	57	2,861	636	44	67	234	3,842
<b>Western Region</b>	<b>4,580</b>	<b>265</b>	<b>199</b>	<b>5,044</b>	<b>2,088</b>	<b>779</b>	<b>114</b>	<b>450</b>	<b>8,475</b>
<b>Total</b>	<b>18,882</b>	<b>1,024</b>	<b>1,639</b>	<b>21,545</b>	<b>3,589</b>	<b>812</b>	<b>481</b>	<b>2,367</b>	<b>28,794</b>
<b>Percent of Total</b>	<b>66%</b>	<b>4%</b>	<b>6%</b>	<b>75%</b>	<b>12%</b>	<b>3%</b>	<b>2%</b>	<b>8%</b>	<b>100%</b>

**Table 4**  
**SUPERVISED POPULATION BY GRADE OF SUPERVISION and REGION / DISTRICT**  
**November 2005**

Region / District	Reporting						Non-Reporting		Total Population
	Enhanced	Maximum	Medium	Minimum	Not Classified	Subtotal	Absconder	Detainees	
Chester	55	691	501	401	24	1,672	117	506	2,295
Philadelphia	76	2,649	1,742	1,435	90	5,992	782	2,072	8,846
<b>Eastern Region</b>	<b>131</b>	<b>3,340</b>	<b>2,243</b>	<b>1,836</b>	<b>114</b>	<b>7,664</b>	<b>899</b>	<b>2,578</b>	<b>11,141</b>
Allentown	5	626	706	878	1	2,216	206	649	3,071
Harrisburg	13	696	678	1,282	58	2,727	216	838	3,781
Scranton	14	214	336	626	6	1,196	38	272	1,506
Williamsport	0	93	161	454	3	711	6	103	820
<b>Central Region</b>	<b>32</b>	<b>1,629</b>	<b>1,881</b>	<b>3,240</b>	<b>68</b>	<b>6,850</b>	<b>466</b>	<b>1,862</b>	<b>9,178</b>
Altoona	2	175	264	374	0	815	33	178	1,026
Mercer	5	247	654	1,136	5	2,047	98	289	2,434
Erie	9	218	222	427	1	877	36	260	1,173
Pittsburgh	30	987	817	968	12	2,814	182	846	3,842
<b>Western Region</b>	<b>46</b>	<b>1,627</b>	<b>1,957</b>	<b>2,905</b>	<b>18</b>	<b>6,553</b>	<b>349</b>	<b>1,573</b>	<b>8,475</b>
<b>Total</b>	<b>209</b>	<b>6,596</b>	<b>6,081</b>	<b>7,981</b>	<b>200</b>	<b>21,067</b>	<b>1,714</b>	<b>6,013</b>	<b>28,794</b>
<b>Percent of Total</b>	<b>1%</b>	<b>23%</b>	<b>21%</b>	<b>28%</b>	<b>1%</b>	<b>73%</b>	<b>6%</b>	<b>21%</b>	<b>100%</b>

**Table 5**  
**SUPERVISED POPULATION BY GENDER, RACE and REGION / DISTRICT**  
**November 2005**

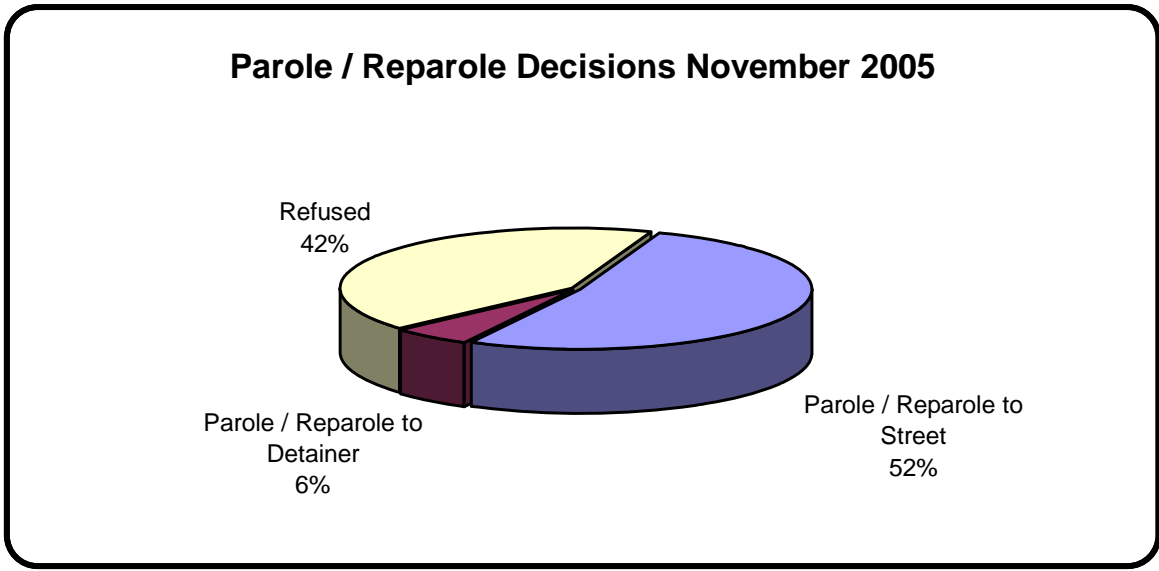
Region / District	Male			Female			Percent Male	Percent Female	Total Population
	White	Non White	Total	White	Non White	Total			
Chester	828	1,299	2,127	116	52	168	93%	7%	2,295
Philadelphia	1,014	7,273	8,287	129	430	559	94%	6%	8,846
<b>EASTERN REGION</b>	<b>1,842</b>	<b>8,572</b>	<b>10,414</b>	<b>245</b>	<b>482</b>	<b>727</b>	<b>93%</b>	<b>7%</b>	<b>11,141</b>
Allentown	1,204	1,544	2,748	188	135	323	89%	11%	3,071
Harrisburg	1,670	1,730	3,400	222	159	381	90%	10%	3,781
Scranton	1,021	300	1,321	157	28	185	88%	12%	1,506
Williamsport	579	76	655	140	25	165	80%	20%	820
<b>CENTRAL REGION</b>	<b>4,474</b>	<b>3,650</b>	<b>8,124</b>	<b>707</b>	<b>347</b>	<b>1,054</b>	<b>89%</b>	<b>11%</b>	<b>9,178</b>
Altoona	788	121	909	106	11	117	89%	11%	1,026
Mercer	1,607	331	1,938	421	75	496	80%	20%	2,434
Erie	673	355	1,028	103	42	145	88%	12%	1,173
Pittsburgh	1,608	1,881	3,489	212	141	353	91%	9%	3,842
<b>WESTERN REGION</b>	<b>4,676</b>	<b>2,688</b>	<b>7,364</b>	<b>842</b>	<b>269</b>	<b>1,111</b>	<b>87%</b>	<b>13%</b>	<b>8,475</b>
<b>TOTAL</b>	<b>10,992</b>	<b>14,910</b>	<b>25,902</b>	<b>1,794</b>	<b>1,098</b>	<b>2,892</b>	<b>90%</b>	<b>10%</b>	<b>28,794</b>

**Table 6**  
**SUPERVISED POPULATION BY EMPLOYMENT STATUS and REGION / DISTRICT**  
**November 2005**

Region / District	Employed	Unemployed	Unemployment Rate	Unable to Work	Unknown	Non Reporting	Total Population
Chester	1,042	383	27%	243	4	623	2,295
Philadelphia	3,224	1,847	36%	912	9	2,854	8,846
<b>EASTERN REGION</b>	<b>4,266</b>	<b>2,230</b>	<b>34%</b>	<b>1,155</b>	<b>13</b>	<b>3,477</b>	<b>11,141</b>
Allentown	1,413	429	23%	374	0	855	3,071
Harrisburg	2,003	442	18%	279	3	1,054	3,781
Scranton	806	241	23%	144	5	310	1,506
Williamsport	478	128	21%	105	0	109	820
<b>CENTRAL REGION</b>	<b>4,700</b>	<b>1,240</b>	<b>21%</b>	<b>902</b>	<b>8</b>	<b>2,328</b>	<b>9,178</b>
Altoona	524	121	19%	170	0	211	1,026
Mercer	1,068	571	35%	406	2	387	2,434
Erie	499	181	27%	195	2	296	1,173
Pittsburgh	1,715	281	14%	813	5	1,028	3,842
<b>WESTERN REGION</b>	<b>3,806</b>	<b>1,154</b>	<b>23%</b>	<b>1,584</b>	<b>9</b>	<b>1,922</b>	<b>8,475</b>
<b>TOTAL</b>	<b>12,772</b>	<b>4,624</b>	<b>27%</b>	<b>3,641</b>	<b>30</b>	<b>7,727</b>	<b>28,794</b>

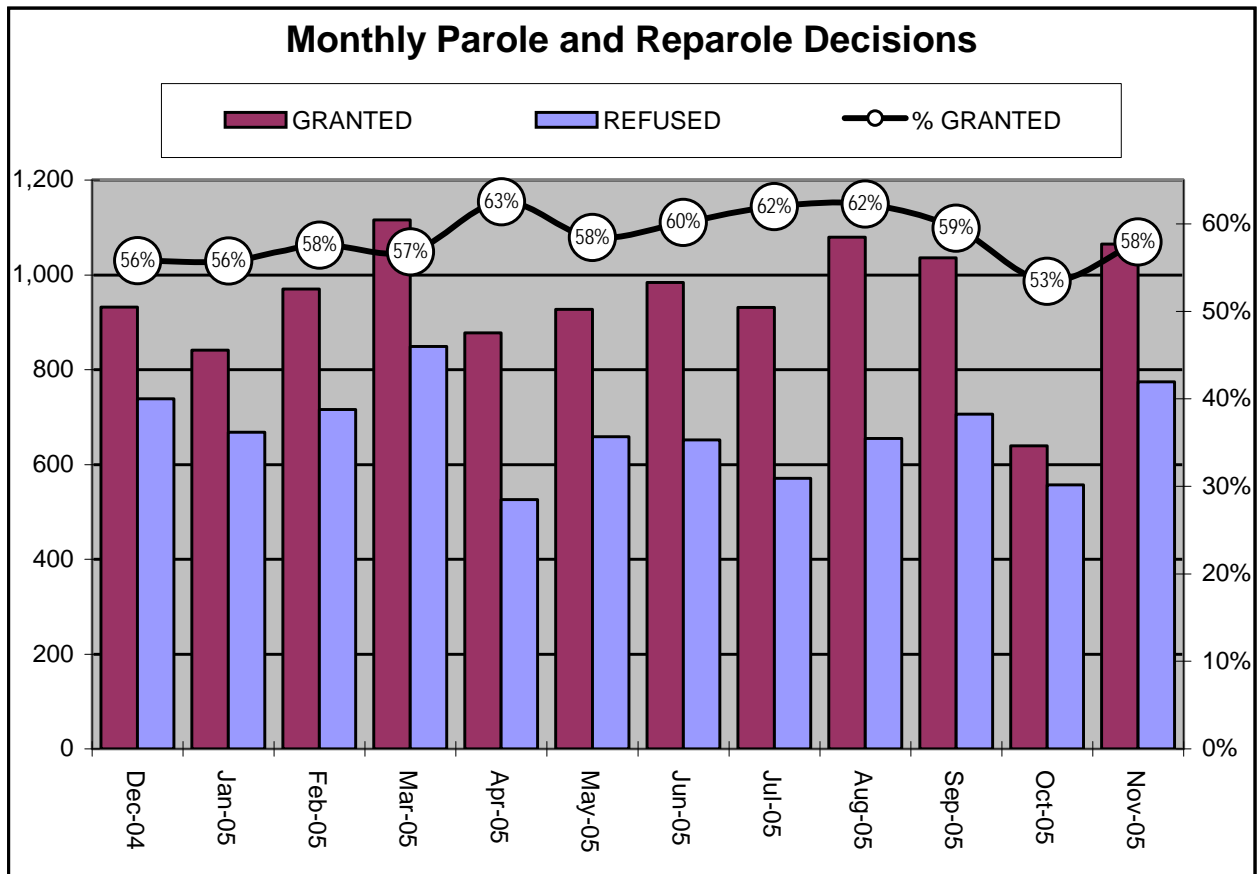
**Table 7  
BOARD DECISIONS  
November 2005**

<b>Type of Decision</b>		<b>Total</b>
Parole / Reparole to Street		959
Parole / Reparole to Detainer		106
Refused		774
Total Considered		1,839
Percent Granted		58%
Recommitments		580
Refer to Prior Action		123
Assigned by Courts		332
Other Decisions		678
<b>Total Decisions</b>		<b>3,552</b>



**Table 8**  
**MONTHLY PAROLE and REPAROLE DECISIONS**  
**November 2005**

MONTH/YEAR	GRANTED	REFUSED	CONSIDERED	% GRANTED
Dec-04	932	739	1,671	56%
Jan-05	841	668	1,509	56%
Feb-05	970	716	1,686	58%
Mar-05	1,116	849	1,965	57%
Apr-05	878	526	1,404	63%
May-05	927	659	1,586	58%
Jun-05	984	652	1,636	60%
Jul-05	931	571	1,502	62%
Aug-05	1,080	655	1,735	62%
Sep-05	1,036	706	1,742	59%
Oct-05	639	557	1,196	53%
Nov-05	1,065	774	1,839	58%
<b>Monthly Avg Prior 12 Mo</b>	950	673	1,623	59%



## PBPP Population Breakdown By Place of Incarceration/Jurisdiction – November 2005

Monthly Count of Board Actions							
Type of Decision	Non-SCI			SCI			Total Board Actions
	Parole	Refuse	Total	Parole	Refuse	Total	
January 2005	79	48	127	762	620	1,382	1,509
February 2005	78	54	132	892	662	1,554	1,686
March 2005	109	51	160	1,007	798	1,805	1,965
April 2005	66	16	82	812	510	1,322	1,404
May 2005	78	46	124	852	610	1,462	1,586
June 2005	71	34	105	913	618	1,531	1,636
July 2005	59	35	94	873	535	1,408	1,502
August 2005	98	30	128	982	625	1,607	1,735
September 2005	95	36	131	941	670	1,611	1,742
October 2005	62	29	91	578	527	1,105	1,196
November 2005	92	29	121	973	745	1,718	1,839
<b>2005 Total</b>	<b>887</b>	<b>408</b>	<b>1,295</b>	<b>9,585</b>	<b>6,920</b>	<b>16,505</b>	<b>17,800</b>

Offender Status- November 2005					
Status	State Prison	County Prison	County Sentence	Other States Cases	Total
Supervision	13,783	1,203	3,448	2,633	21,067
Absconder	1,398	79	228	9	1,714
Detention	4,725	357	725	206	6,013
<b>Total</b>	<b>19,906</b>	<b>1,639</b>	<b>4,401</b>	<b>2,848</b>	<b>28,794</b>

PBPP Monthly Population Profile						
Offender Status	Jun 05	Jul 05	Aug 05	Sep 05	Oct 05	Nov 05
<b>State sentence from state institution</b>	<b>19,564</b>	<b>19,682</b>	<b>19,750</b>	<b>19,797</b>	<b>19,988</b>	<b>19,906</b>
<i>Supervision</i>	13,811	13,789	13,734	13,701	13,892	13,783
<i>Absconder</i>	1,386	1,398	1,392	1,393	1,410	1,398
<i>Detention</i>	4,367	4,495	4,624	4,703	4,686	4,725
<b>State sentence from County Prison</b>	<b>1,640</b>	<b>1,638</b>	<b>1,632</b>	<b>1,626</b>	<b>1,644</b>	<b>1,639</b>
<i>Supervision</i>	1,177	1,187	1,189	1,174	1,203	1,203
<i>Absconder</i>	94	81	84	87	79	79
<i>Detention</i>	369	370	359	365	362	357
<b>County sentence Prob &amp; Parole</b>	<b>4,343</b>	<b>4,369</b>	<b>4,391</b>	<b>4,425</b>	<b>4,417</b>	<b>4,401</b>
<i>Supervision</i>	3,443	3,456	3,443	3,479	3,463	3,448
<i>Absconder</i>	223	217	210	208	221	228
<i>Detention</i>	677	696	738	738	733	725
<b>Other state's sentence Prob &amp; Parole</b>	<b>2,825</b>	<b>2,799</b>	<b>2,812</b>	<b>2,824</b>	<b>2,828</b>	<b>2,848</b>
<i>Supervision</i>	2,601	2,571	2,597	2,597	2,597	2,633
<i>Absconder</i>	24	24	17	16	10	9
<i>Detention</i>	200	204	198	211	221	206
<b>PBPP Population end of month</b>	<b>28,372</b>	<b>28,488</b>	<b>28,585</b>	<b>28,672</b>	<b>28,877</b>	<b>28,794</b>



**PBPP Population Breakdown By Place of Incarceration/Jurisdiction – November 2005**

<b>Additions and Deletions</b>						
	<b>Jun 05</b>	<b>Jul 05</b>	<b>Aug 05</b>	<b>Sep 05</b>	<b>Oct 05</b>	<b>Nov 05</b>
<b>Total Additions</b>	<b>1,223</b>	<b>1,079</b>	<b>1,284</b>	<b>1,240</b>	<b>1,256</b>	<b>1,078</b>
State sentence - SCI	804	724	815	764	844	671
State sentence - Cnty Prison	85	38	73	74	77	62
County sentence Prob & Parole	196	201	221	237	184	187
Other state's sentence	138	116	175	165	151	158
<b>Total Deletions</b>	<b>1,142</b>	<b>961</b>	<b>1,180</b>	<b>1,151</b>	<b>1,044</b>	<b>1,167</b>
<b>State sentence - SCI</b>	<b>709</b>	<b>580</b>	<b>717</b>	<b>683</b>	<b>617</b>	<b>734</b>
<i>Technical Violator</i>	285	247	260	284	283	304
<i>Convicted Violator</i>	123	75	131	134	102	121
<i>Maximum Expiration</i>	272	230	291	230	208	279
<i>Other Case Closure</i>	29	28	35	35	24	30
<b>State sentence - Cnty Prison</b>	<b>69</b>	<b>39</b>	<b>73</b>	<b>80</b>	<b>60</b>	<b>63</b>
<i>Technical Violator</i>	24	16	27	24	17	15
<i>Convicted Violator</i>	9	3	6	10	9	9
<i>Maximum Expiration</i>	33	15	34	43	32	36
<i>Other Case Closure</i>	3	5	6	3	2	3
<b>County sentence Prob &amp; Parole</b>	<b>205</b>	<b>203</b>	<b>225</b>	<b>231</b>	<b>217</b>	<b>227</b>
<i>Technical Violator</i>	48	39	45	49	46	46
<i>Convicted Violator</i>	14	17	17	29	29	27
<i>Maximum Expiration</i>	104	102	110	108	101	111
<i>Other Case Closure</i>	39	45	53	45	41	43
<b>Other state's sentence</b>	<b>159</b>	<b>139</b>	<b>165</b>	<b>157</b>	<b>150</b>	<b>143</b>
<i>Technical Violator</i>	5	3	2	1	1	0
<i>Convicted Violator</i>	3	0	2	2	1	1
<i>Maximum Expiration</i>	75	48	54	57	71	70
<i>Other Case Closure</i>	76	88	107	97	77	72
<b>PBPP Population end of month</b>	<b>28,372</b>	<b>28,488</b>	<b>28,585</b>	<b>28,672</b>	<b>28,877</b>	<b>28,794</b>