

# COMMONWEALTH OF PENNSYLVANIA

## Board of Probation and Parole

### MONTHLY STATISTICAL REPORT

January 2002



**Mark Schweiker**  
Governor

William F. Ward  
Chairman

Allen Castor  
Member

Benjamin Martinez  
Member

Barbara K. Descher  
Member

Sean R. Ryan  
Member

Richard A. Kipp  
Member

Michael M. Webster  
Member

Gary R. Lucht  
Member

Lloyd A. White  
Member

Mary A. Achilles  
Victim Advocate

pbpp  
AN EQUAL OPPORTUNITY EMPLOYER

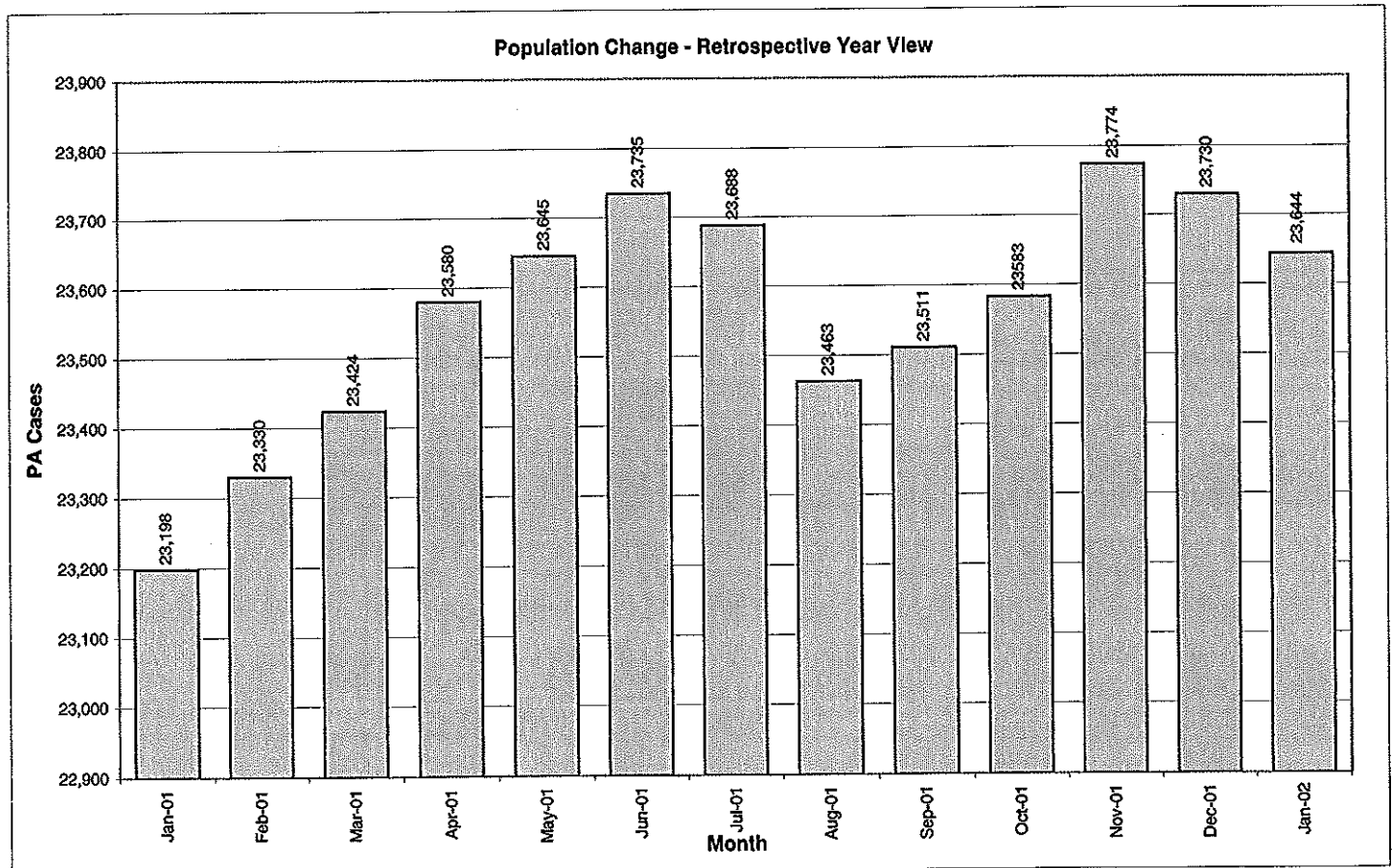


**Table 1  
WORKLOAD AND POPULATION CHANGES BY DISTRICT  
January 2002**

Type of Cases	Beginning FY Cases Jul-01	Current Month Cases	Fiscal YTD Index	Additions	Deletions		Number of Agents	Average Workload	Total Workload
					Recommits/ Revocations	Other Deletions			
CHESTER	1,975	1,887	96	51	37	53	30	127	3,800
PHILADELPHIA	7,313	7,334	100	218	129	127*	101	126	12,776
<b>EASTERN REGION</b>	<b>9,288</b>	<b>9,221</b>	<b>99</b>	<b>269</b>	<b>166</b>	<b>181</b>	<b>131</b>	<b>127</b>	<b>16,576</b>
ALLENTOWN	2,430	2,416	99	109	35	55	35	150	5,236
HARRISBURG	2,606	2,631	101	110	41	51	37	170	6,303
SCRANTON	1,056	1,057	100	32	21	51	16	146	2,335
WILLIAMSPORT	650	660	102	20	6	21	12	160	1,925
<b>CENTRAL REGION</b>	<b>6,742</b>	<b>6,764</b>	<b>100</b>	<b>271</b>	<b>103</b>	<b>178</b>	<b>100</b>	<b>158</b>	<b>15,799</b>
ALTOONA	772	748	97	21	15	12	14	157	2,193
MERCER	2,195	2,272	104	142	23	104	26	229	5,965
ERIE	949	910	96	30	30	34	16	117	1,872
PITTSBURGH	3,789	3,729	98	152	54	71	59	126	7,408
<b>WESTERN REGION</b>	<b>7,705</b>	<b>7,659</b>	<b>99</b>	<b>345</b>	<b>122</b>	<b>221</b>	<b>115</b>	<b>152</b>	<b>17,437</b>
<b>TOTAL CASES SUPERVISED</b>	<b>23,735</b>	<b>23,644</b>	<b>100</b>	<b>885</b>	<b>391</b>	<b>580</b>	<b>346</b>	<b>144</b>	<b>49,811</b>

\*Select program accounting adjustments were made.

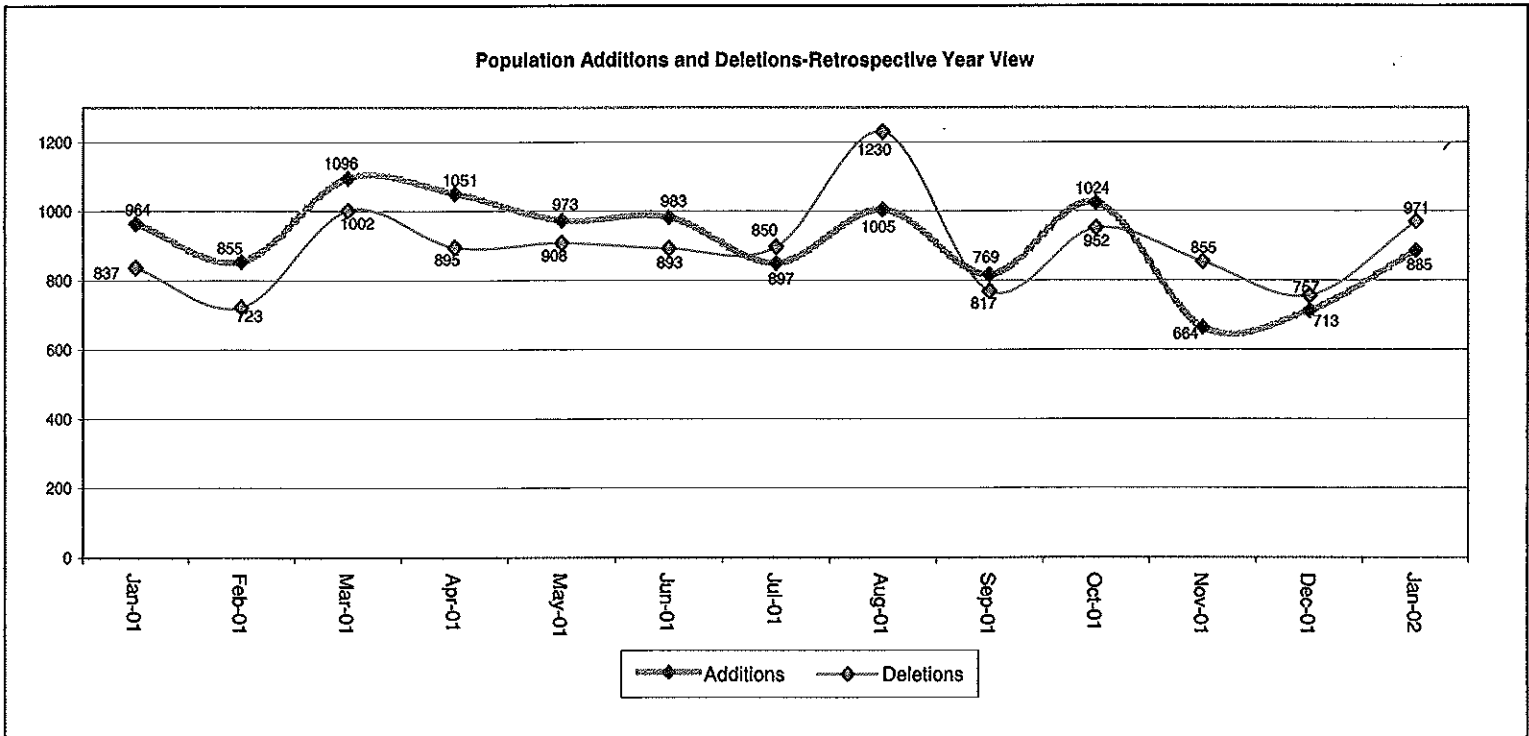
Pa Cases in Other States	2,269	2,296	101	39	6	44
--------------------------	-------	-------	-----	----	---	----



**Table 2**  
**CASE ADDITIONS AND DELETIONS FOR SUPERVISED OFFENDERS IN PENNSYLVANIA**  
**January 2002**

Case Additions and Deletions	PAROLE	REPAROLE	SPECIAL COUNTY PROBATION	SPECIAL COUNTY PAROLE	OTHER STATES' PAROLE	OTHER STATES' PROBATION	MONTHLY TOTAL	FISCAL YTD TOTAL
<b>ADDITIONS</b>	503	103	122	58	20	79	885	6,149
<b>DELETIONS-RECOMMITMENTS</b>								
<b>Convicted Parole Violator</b>								
State Corrections	62	16	2	0	0	0	80	522
County Corrections	8	1	12	5	0	0	26	160
Other States Cases	1	0	0	1	1	0	3	4
<b>Total Convicted Parole Violator</b>	71	17	14	6	1	0	109	686
<b>Technical Parole Violator</b>								0
State Corrections	175	59	6	0	0	0	240	1,701
County Corrections	10	2	19	0	1	0	32	401
Other States Cases	8	0	1	1	0	0	10	21
<b>Total Technical Parole Violator</b>	194	61	26	1	1	0	282	2,123
<b>TOTAL RECOMMITMENTS</b>	265	78	40	7	2	0	391	2,809
Deletion Maximum Discharge	254	41	74	44	10	55	478	2,746
Deletion Death	6	0	0	1	0	1	8	79
Deletion Other	9*	4	35	9	5	32	94	608
<b>TOTAL DELETIONS</b>	534	123	149	61	17	88	971	6,240

\*Select program accounting adjustments were made.



**Table 3  
CASES BY ORIGINATING JURISDICTION  
BY REGION AND DISTRICT  
January 2002**

District/Region	PA Parole State Sentence				County		Other States		Total Cases
	from DOC	Boot Camp	Cnty Prisons	Subtotal	Spec Prob	Spec Parole	Parole	Probation	
Chester	1136	83	212	1431	164	6	34	252	1,887
Philadelphia	5983	167	453	6603	337	14	97	283	7,334
<b>Eastern Region</b>	<b>7,119</b>	<b>250</b>	<b>665</b>	<b>8,034</b>	<b>501</b>	<b>20</b>	<b>131</b>	<b>535</b>	<b>9,221</b>
Allentown	1495	89	381	1965	131	5	52	263	2,416
Harrisburg	1844	148	234	2226	119	2	62	222	2,631
Scranton	417	31	317	765	86	5	33	168	1,057
Williamsport	430	21	70	521	39	7	14	79	660
<b>Central Region</b>	<b>4,186</b>	<b>289</b>	<b>1,002</b>	<b>5,477</b>	<b>375</b>	<b>19</b>	<b>161</b>	<b>732</b>	<b>6,764</b>
Altoona	401	29	61	491	122	72	8	55	748
Mercer	403	20	57	480	919	804	22	47	2,272
Erie	595	54	42	691	117	35	12	55	910
Pittsburgh	2323	206	98	2627	778	86	61	177	3,729
<b>Western Region</b>	<b>3,722</b>	<b>309</b>	<b>258</b>	<b>4,289</b>	<b>1,936</b>	<b>997</b>	<b>103</b>	<b>334</b>	<b>7,659</b>
<b>Total Cases</b>	<b>15,027</b>	<b>848</b>	<b>1,925</b>	<b>17,800</b>	<b>2,812</b>	<b>1,036</b>	<b>395</b>	<b>1,601</b>	<b>23,644</b>
<b>Percent of Total</b>	<b>64%</b>	<b>4%</b>	<b>8%</b>	<b>75%</b>	<b>12%</b>	<b>4%</b>	<b>2%</b>	<b>7%</b>	<b>100%</b>

**Table 4  
CASES BY GRADE OF SUPERVISION  
BY REGION AND DISTRICT  
January 2002**

District/Region	Reporting						Non-Reporting		Total Cases
	Enhanced	Maximum	Medium	Minimum	Not Classified	Subtotal	Absconder	Detainees	
Chester	174	645	373	210	9	1,411	98	378	1,887
Philadelphia	430	2,288	1,575	522	88	4,903	833	1,598	7,334
<b>Eastern Region</b>	<b>604</b>	<b>2,933</b>	<b>1,948</b>	<b>732</b>	<b>97</b>	<b>6,314</b>	<b>931</b>	<b>1,976</b>	<b>9,221</b>
Allentown	75	704	659	396	6	1,840	183	393	2,416
Harrisburg	114	857	657	357	45	2,030	141	460	2,631
Scranton	22	255	369	175	1	822	28	207	1,057
Williamsport	13	216	200	143	0	572	9	79	660
<b>Central Region</b>	<b>224</b>	<b>2,032</b>	<b>1,885</b>	<b>1,071</b>	<b>52</b>	<b>5,284</b>	<b>361</b>	<b>1,139</b>	<b>6,764</b>
Altoona	48	226	253	112	87	726	20	89	835
Mercer	12	473	703	673	0	1,861	81	243	2,185
Erie	12	301	269	170	12	764	35	111	910
Pittsburgh	217	1,199	1,023	339	26	2,804	231	694	3,729
<b>Western Region</b>	<b>289</b>	<b>2,199</b>	<b>2,248</b>	<b>1,294</b>	<b>125</b>	<b>6,155</b>	<b>367</b>	<b>1,137</b>	<b>7,659</b>
<b>Total Cases</b>	<b>1,117</b>	<b>7,164</b>	<b>6,081</b>	<b>3,097</b>	<b>274</b>	<b>17,733</b>	<b>1,659</b>	<b>4,252</b>	<b>23,644</b>
<b>Percent of Total</b>	<b>5%</b>	<b>30%</b>	<b>26%</b>	<b>13%</b>	<b>1%</b>	<b>75%</b>	<b>7%</b>	<b>18%</b>	<b>100%</b>

**Table 5**  
**CASES BY SEX AND RACE**  
**BY REGION AND DISTRICT**  
**January 2002**

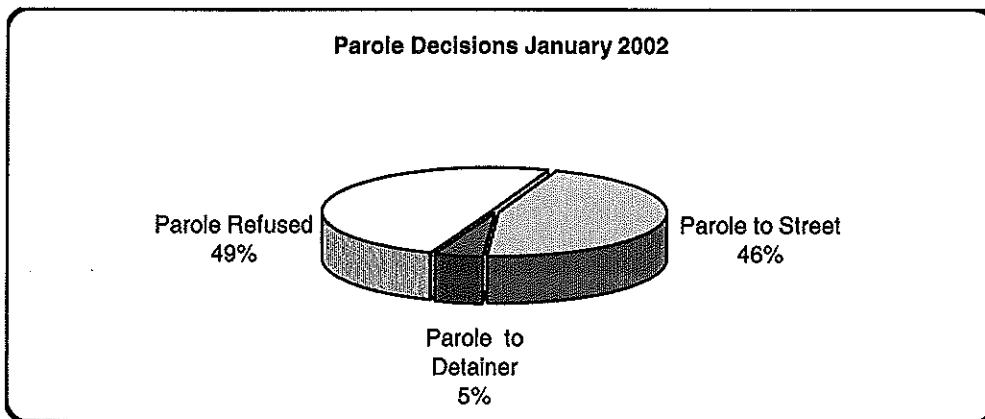
District/Region	Male			Female			Percent Male	Percent Female	Total Cases
	White	Non White	Total	White	Non White	Total			
Chester	686	1,053	1,739	55	93	148	92%	8%	1,887
Philadelphia	876	5,971	6,847	399	88	487	93%	7%	7,334
<b>EASTERN REGION</b>	<b>1,562</b>	<b>7,024</b>	<b>8,586</b>	<b>454</b>	<b>181</b>	<b>635</b>	<b>93%</b>	<b>7%</b>	<b>9,221</b>
Allentown	1,043	1,113	2,156	103	157	260	89%	11%	2,416
Harrisburg	1,154	1,178	2,332	129	170	299	89%	11%	2,631
Scranton	774	165	939	20	98	118	89%	11%	1,057
Williamsport	467	70	537	28	95	123	81%	19%	660
<b>CENTRAL REGION</b>	<b>3,438</b>	<b>2,526</b>	<b>5,964</b>	<b>280</b>	<b>520</b>	<b>800</b>	<b>88%</b>	<b>12%</b>	<b>6,764</b>
Altoona	591	78	669	9	70	79	89%	11%	748
Mercer	1,577	309	1,886	60	326	386	83%	17%	2,272
Erie	531	274	805	40	65	105	88%	12%	910
Pittsburgh	1,538	1,824	3,362	193	174	367	90%	10%	3,729
<b>WESTERN REGION</b>	<b>4,237</b>	<b>2,485</b>	<b>6,722</b>	<b>302</b>	<b>635</b>	<b>937</b>	<b>88%</b>	<b>12%</b>	<b>7,659</b>
<b>TOTAL CASES</b>	<b>9,237</b>	<b>12,035</b>	<b>21,272</b>	<b>1,036</b>	<b>1,336</b>	<b>2,372</b>	<b>90%</b>	<b>10%</b>	<b>23,644</b>

**Table 6**  
**CASES BY EMPLOYMENT STATUS**  
**BY REGION AND DISTRICT**  
**January 2002**

District/Region	Employed	Unemployed	Unemployment Rate	Unable to Work	Unknown	Non Reporting	Total
Chester	823	385	32%	203	0	476	1,887
Philadelphia	2,483	1,879	43%	527	14	2,431	7,334
<b>EASTERN REGION</b>	<b>3,306</b>	<b>2,264</b>	<b>41%</b>	<b>730</b>	<b>14</b>	<b>2,907</b>	<b>9,221</b>
Allentown	1,099	423	28%	314	4	576	2,416
Harrisburg	1,374	375	21%	281	0	601	2,631
Scranton	516	173	25%	131	2	235	1,057
Williamsport	354	117	25%	100	1	88	660
<b>CENTRAL REGION</b>	<b>3,343</b>	<b>1,088</b>	<b>25%</b>	<b>826</b>	<b>7</b>	<b>1,500</b>	<b>6,764</b>
Altoona	423	112	21%	103	1	109	748
Mercer	1,086	541	33%	309	12	324	2,272
Erie	400	226	36%	137	1	146	910
Pittsburgh	1,633	736	31%	433	2	925	3,729
<b>WESTERN REGION</b>	<b>3,542</b>	<b>1,615</b>	<b>31%</b>	<b>982</b>	<b>16</b>	<b>1,504</b>	<b>7,659</b>
<b>TOTAL CASES</b>	<b>10,191</b>	<b>4,967</b>	<b>33%</b>	<b>2,538</b>	<b>37</b>	<b>5,911</b>	<b>23,644</b>

**Table 7  
BOARD DECISIONS  
January 2002**

Type of Decision	Total
Parole to Street	660
Parole to Detainer	68
Parole Refused	719
Total Considered	1,447
Percent Granted	51%
Recommitments	538
Refer to Prior Action	214
Assigned by Courts	248
Other Decisions	687
<b>Total Decisions</b>	<b>3,134</b>



**Table 8  
HEARINGS AND INTERVIEWS  
January 2002**

Type of Decision	Board Members	Hearing Examiners	Total
<b>HEARINGS</b>			
Preliminary	0	30	30
Preliminary/Detention	0	14	14
Violation	0	214	214
Violation/Detention	0	67	67
Detention	0	45	45
Revocation	0	104	104
Revocation/Violation	0	5	5
Probable Cause Out-of State	0	14	14
Panel	41	0	41
<b>Total Hearings</b>	<b>41</b>	<b>493</b>	<b>534</b>
<b>INTERVIEWS</b>			
Parole Minimum	145	631	776
Review	304	479	783
Reparole Review	159	329	488
Victim Input	0	15	15
<b>Total Interviews</b>	<b>608</b>	<b>1,454</b>	<b>2,062</b>

**Table 9**  
**MONTHLY PAROLING DECISIONS**  
**January 2002**

MONTH/YEAR	PAROLE GRANTED	PAROLE REFUSED	TOTAL CONSIDERED	% GRANTED
Dec-00	792	705	1,497	53%
Jan-01	768	740	1,508	51%
Feb-01	803	615	1,418	57%
Mar-01	804	756	1,560	52%
Apr-01	683	639	1,322	52%
May-01	752	681	1,433	52%
Jun-01	616	620	1,236	50%
Jul-01	595	630	1,225	49%
Aug-01	697	538	1,235	56%
Sep-01	623	560	1,180	53%
Oct-01	817	717	1,534	53%
Nov-01	822	745	1,567	52%
Dec-01	658	564	1,222	54%
Jan-02	728	719	1,447	51%
<b>Monthly Avg Prior 12 Mo</b>	<b>717</b>	<b>649</b>	<b>1,376</b>	<b>52%</b>

