

# COMMONWEALTH OF PENNSYLVANIA

## Board of Probation and Parole

### MONTHLY STATISTICAL REPORT

August 2000



**Tom Ridge**  
Governor

William F. Ward  
Chairman

Allen Castor  
Member

Benjamin Martinez  
Member

Barbara K. Descher  
Member

Nicholas P. Muller  
Member

Richard A. Kipp  
Member

Sean R. Ryan  
Member

Gary R. Lucht  
Member

Michael M. Webster  
Member

Mary A. Achilles  
Victim Advocate

pbpp  
AN EQUAL OPPORTUNITY EMPLOYER

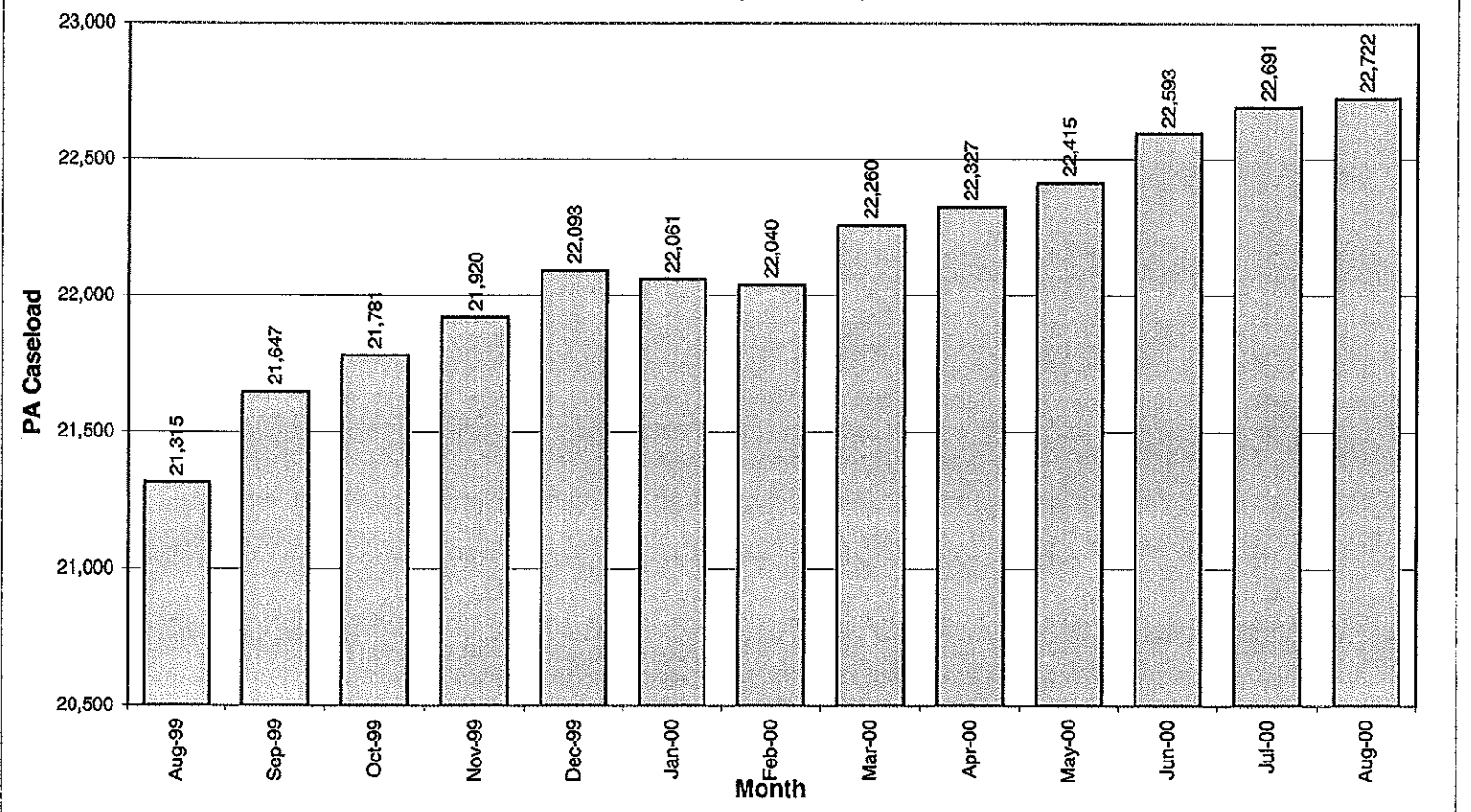


**Table 1**  
**CASELOAD, WORKLOAD, AND POPULATION CHANGES BY DISTRICT**  
**August 2000**

Type of Cases	Beginning FY Cases 7/1/00	Current Month Cases	Fiscal YTD Index	Additions	Deletions		Number of Agents	Average Caseload	Average Workload	Total Workload
					Recommits/ Revocations	Other Deletions				
CHESTER	1,865	1,927	103	79	19	26	30	64	118	3,537
PHILADELPHIA	6,867	6,895	100	269	98	119	111	62	116	12,840
<b>EASTERN REGION</b>	<b>8,732</b>	<b>8,822</b>	<b>101</b>	<b>348</b>	<b>117</b>	<b>145</b>	<b>141</b>	<b>63</b>	<b>116</b>	<b>16,377</b>
ALLENTOWN	2,223	2,274	102	111	46	41	35	65	121	4,228
HARRISBURG	2,540	2,611	103	137	46	88	37	71	164	6,070
SCRANTON	1,050	1,066	102	54	20	43	15	71	159	2,385
WILLIAMSPORT	641	639	100	15	15	19	12	53	156	1,868
<b>CENTRAL REGION</b>	<b>6,454</b>	<b>6,590</b>	<b>102</b>	<b>317</b>	<b>127</b>	<b>191</b>	<b>99</b>	<b>67</b>	<b>147</b>	<b>14,550</b>
ALTOONA	766	783	102	35	12	15	14	56	141	1,979
MERCER	1,897	1,842	97	50	7	48	32	58	131	4,189
ERIE	894	905	101	35	13	23	15	60	128	1,922
PITTSBURGH	3,850	3,830	99	134	70	84	57	67	136	7,743
<b>WESTERN REGION</b>	<b>7,407</b>	<b>7,360</b>	<b>99</b>	<b>254</b>	<b>102</b>	<b>170</b>	<b>118</b>	<b>62</b>	<b>134</b>	<b>15,833</b>
<b>TOTAL CASES SUPERVISED</b>	<b>22,593</b>	<b>22,772</b>	<b>101</b>	<b>919</b>	<b>346</b>	<b>506</b>	<b>358</b>	<b>64</b>	<b>131</b>	<b>46,759</b>

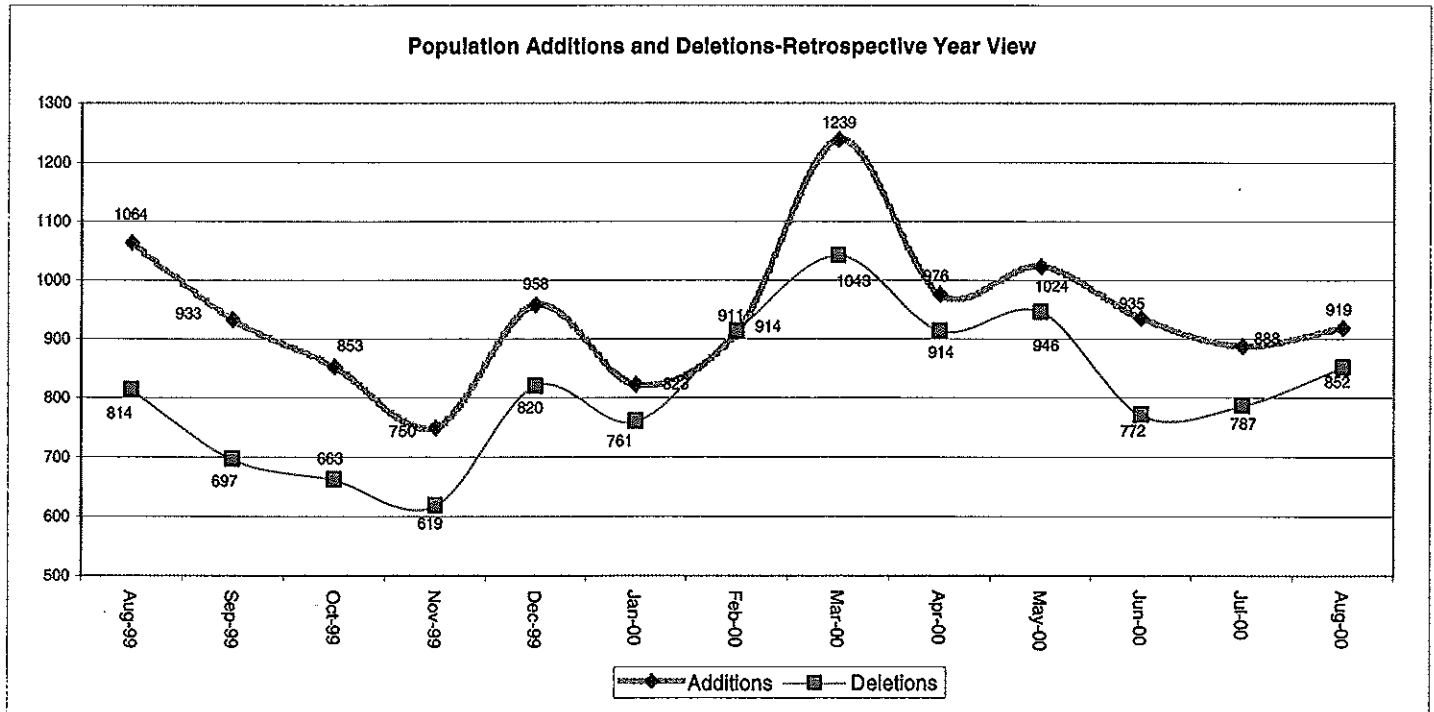
Pa Cases in Other States	2,314	2,321	100	55	8	39
--------------------------	-------	-------	-----	----	---	----

**Caseload Population Change - Retrospective Year View**



**Table 2**  
**CASE ADDITIONS AND DELETIONS FOR SUPERVISED CASELOAD IN PENNSYLVANIA**  
**August 2000**

Case Additions and Deletions	PAROLE	REPAROLE	SPECIAL COUNTY PROBATION	SPECIAL COUNTY PAROLE	OTHER STATES' PAROLE	OTHER STATES' PROBATION	MONTHLY TOTAL	FISCAL YTD TOTAL
<b>ADDITIONS</b>	575	146	65	34	15	84	919	1,809
<b>DELETIONS-RECOMMITMENTS</b>								
<b>Convicted Parole Violator</b>								
State Corrections	62	15	0	0	0	0	77	143
County Corrections	12	1	5	3	0	0	21	44
Other States Cases	1	0	0	0	2	0	3	5
<b>Total Convicted Parole Violator</b>	75	16	5	3	2	0	101	192
<b>Technical Parole Violator</b>								0
State Corrections	148	52	2	0	0	0	202	399
County Corrections	16	5	14	4	0	0	39	88
Other States Cases	0	0	0	0	0	4	4	6
<b>Total Technical Parole Violator</b>	164	57	16	4	0	4	245	493
<b>TOTAL RECOMMITMENTS</b>	239	73	21	7	2	4	346	685
Deletion Maximum Discharge	234	54	37	9	5	45	384	764
Deletion Death	9	1	3	0	1	1	15	29
Deletion Other	13	4	32	5	11	42	107	161
<b>TOTAL DELETIONS</b>	495	132	93	21	19	92	852	1,639



**Table 3**  
**CASES BY ORIGINATING JURISDICTION**  
**BY REGION AND DISTRICT**  
**AUGUST 2000**

District/Region	PA Parole State Sentence				County		Other States		Total Cases
	from DOC	Boot Camp	Cnty Prisons	Subtotal	Spec Prob	Spec Parole	Parole	Probation	
Chester	1,290	51	186	1,527	116	6	33	245	1,927
Philadelphia	5,891	44	360	6,295	231	32	94	243	6,895
Eastern Region	7,181	95	546	7,822	347	38	127	488	8,822
Allentown	1,461	30	407	1,898	114	5	45	212	2,274
Harrisburg	1,873	96	252	2,221	86	11	59	234	2,611
Scranton	412	19	336	767	81	3	27	188	1,066
Williamsport	409	8	94	511	37	8	14	69	639
Central Region	4,155	153	1,089	5,397	318	27	145	703	6,590
Altoona	429	19	69	517	123	73	11	59	783
Mercer	428	9	39	476	702	603	18	43	1,842
Erie	605	18	54	677	107	46	14	61	905
Pittsburgh	2,430	73	106	2,609	836	111	62	212	3,830
Western Region	3,892	119	268	4,279	1,768	833	105	375	7,360
<b>Total Cases</b>	<b>15,228</b>	<b>367</b>	<b>1,903</b>	<b>17,498</b>	<b>2,433</b>	<b>898</b>	<b>377</b>	<b>1,566</b>	<b>22,772</b>
<b>Percent of Total</b>	<b>67%</b>	<b>2%</b>	<b>8%</b>	<b>77%</b>	<b>11%</b>	<b>4%</b>	<b>2%</b>	<b>7%</b>	<b>100%</b>

**Table 4**  
**CASES BY GRADE OF SUPERVISION**  
**BY REGION AND DISTRICT**  
**AUGUST 2000**

District/Region	Reporting						Non-Reporting		Total Cases
	Enhanced	Maximum	Medium	Minimum	Not Classified	Subtotal	Absconder	Detainees	
Chester	181	633	398	279	26	1,517	118	292	1,927
Philadelphia	520	2,463	1,412	576	51	5,022	756	1,117	6,895
Eastern Region	701	3,096	1,810	855	77	6,539	874	1,409	8,822
Allentown	64	723	565	327	75	1,754	172	348	2,274
Harrisburg	48	888	681	376	102	2,095	136	380	2,611
Scranton	24	264	376	149	50	863	25	178	1,066
Williamsport	11	157	213	157	21	559	11	69	639
Central Region	147	2,032	1,835	1,009	248	5,271	344	975	6,590
Altoona	23	207	256	113	45	644	21	118	783
Mercer	7	314	439	594	208	1,562	76	204	1,842
Erie	5	289	268	164	19	745	36	124	905
Pittsburgh	208	1,237	1,065	354	43	2,907	252	671	3,830
Western Region	243	2,047	2,028	1,225	315	5,858	385	1,117	7,360
<b>Total Cases</b>	<b>1,091</b>	<b>7,175</b>	<b>5,673</b>	<b>3,089</b>	<b>640</b>	<b>17,668</b>	<b>1,603</b>	<b>3,501</b>	<b>22,772</b>
<b>Percent of Total</b>	<b>5%</b>	<b>32%</b>	<b>25%</b>	<b>14%</b>	<b>3%</b>	<b>78%</b>	<b>7%</b>	<b>15%</b>	<b>100%</b>

**Table 5  
CASES BY SEX AND RACE  
BY REGION AND DISTRICT  
August 2000**

District/Region	Male			Female			Percent Male	Percent Female	Total Cases
	White	Non White	Total	White	Non White	Total			
Chester	733	1,063	1,796	74	57	131	93%	7%	1,927
Philadelphia	909	5,561	6,470	65	360	425	94%	6%	6,895
<b>EASTERN REGION</b>	<b>1,642</b>	<b>6,624</b>	<b>8,266</b>	<b>139</b>	<b>417</b>	<b>556</b>	<b>94%</b>	<b>6%</b>	<b>8,822</b>
Allentown	1,009	1,015	2,024	147	103	250	89%	11%	2,274
Harrisburg	1,156	1,194	2,350	141	120	261	90%	10%	2,611
Scranton	777	162	939	104	23	127	88%	12%	1,066
Williamsport	468	53	521	96	22	118	82%	18%	639
<b>CENTRAL REGION</b>	<b>2,942</b>	<b>2,371</b>	<b>5,313</b>	<b>392</b>	<b>246</b>	<b>638</b>	<b>81%</b>	<b>10%</b>	<b>6,590</b>
Altoona	602	92	694	82	7	89	89%	11%	783
Mercer	1,251	277	1,528	254	60	314	83%	17%	1,842
Erie	538	249	787	76	42	118	87%	13%	905
Pittsburgh	1,581	1,861	3,442	175	213	388	90%	10%	3,830
<b>WESTERN REGION</b>	<b>3,972</b>	<b>2,479</b>	<b>6,451</b>	<b>587</b>	<b>322</b>	<b>909</b>	<b>88%</b>	<b>12%</b>	<b>7,360</b>
<b>TOTAL CASES</b>	<b>8,556</b>	<b>11,474</b>	<b>20,030</b>	<b>1,118</b>	<b>985</b>	<b>2,103</b>	<b>88%</b>	<b>9%</b>	<b>22,772</b>

**Table 6  
CASES BY EMPLOYMENT STATUS  
BY REGION AND DISTRICT  
August 2000**

District/Region	Employed	Unemployed	Unemployment Rate	Unable to Work	Unknown	Non Reporting	Total
Chester	806	544	40%	96	71	410	1,927
Philadelphia	2,098	2,459	54%	247	218	1873	6,895
<b>EASTERN REGION</b>	<b>2,904</b>	<b>3,003</b>	<b>51%</b>	<b>343</b>	<b>289</b>	<b>2,283</b>	<b>8,822</b>
Allentown	604	426	41%	288	436	520	2,274
Harrisburg	997	642	39%	173	283	516	2,611
Scranton	526	219	29%	84	34	203	1,066
Williamsport	244	73	23%	43	199	80	639
<b>CENTRAL REGION</b>	<b>2,371</b>	<b>1,360</b>	<b>36%</b>	<b>588</b>	<b>952</b>	<b>1,319</b>	<b>6,590</b>
Altoona	237	73	24%	58	276	139	783
Mercer	658	494	43%	111	299	280	1,842
Erie	438	186	30%	90	31	160	905
Pittsburgh	1,512	1,101	42%	269	25	923	3,830
<b>WESTERN REGION</b>	<b>2,845</b>	<b>1,854</b>	<b>39%</b>	<b>528</b>	<b>631</b>	<b>1,502</b>	<b>7,360</b>
<b>TOTAL CASES</b>	<b>8,120</b>	<b>6,217</b>	<b>43%</b>	<b>1,459</b>	<b>1,872</b>	<b>5,104</b>	<b>22,772</b>

Table 7  
**BOARD DECISIONS**  
 August 2000

Type of Decision	Total
Parole to Street	740
Parole to Detainer	93
Parole Refused	931
<b>Total Considered</b>	<b>1,764</b>
<b>Percent Granted</b>	<b>47%</b>
Recommitments	386
Refer to Prior Action	89
Assigned by Courts	309
Other Decisions	612
<b>Total Decisions</b>	<b>3,160</b>

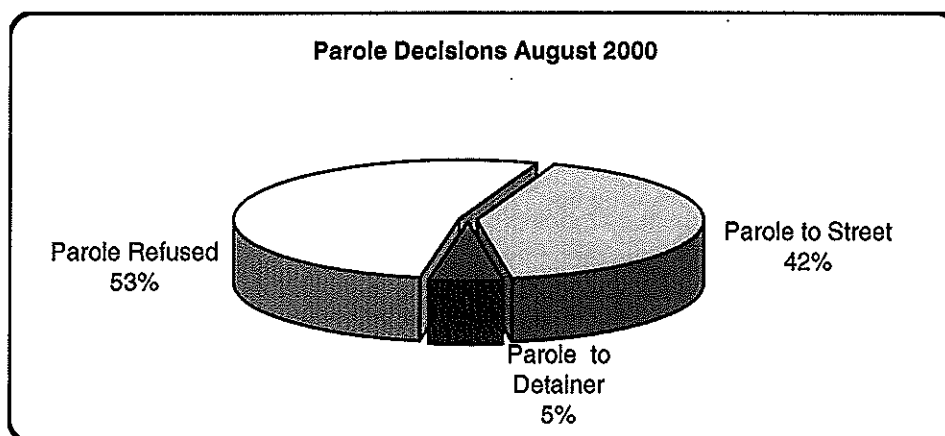


Table 8  
**HEARINGS AND INTERVIEWS**  
 August 2000

Type	Board Members	Hearing Examiners	Total
<b>HEARINGS</b>			
Preliminary	0	64	64
Preliminary/Detention	0	21	21
Violation	0	228	228
Violation/Detention	0	59	59
Detention	0	26	26
Revocation	0	54	54
Revocation/Violation	0	14	14
Probable Cause Out-of State	0	23	23
Panel	68	0	68
<b>Total Hearings</b>	<b>68</b>	<b>489</b>	<b>557</b>
<b>INTERVIEWS</b>			
Parole Minimum	145	690	835
Review	323	571	894
Reparole Review	121	258	379
Victim Input	0	20	20
<b>Total Interviews</b>	<b>589</b>	<b>1,539</b>	<b>2,128</b>

**Table 9**  
**MONTHLY PAROLING DECISIONS**  
**August 2000**

MONTH/YEAR	PAROLE GRANTED	PAROLE REFUSED	TOTAL CONSIDERED	% GRANTED
Aug-99	808	781	1,589	51%
Sep-99	625	774	1,399	45%
Oct-99	811	864	1,675	48%
Nov-99	778	818	1,596	49%
Dec-99	574	684	1,258	46%
Jan-00	767	757	1,524	50%
Feb-00	655	710	1,365	48%
Mar-00	747	660	1,407	53%
Apr-00	699	767	1,466	48%
May-00	694	757	1,451	48%
Jun-00	723	750	1,473	49%
Jul-00	662	683	1,345	49%
Aug-00	833	931	1,764	47%
<b>Monthly Avg Prior 12 Mo</b>	<b>769</b>	<b>820</b>	<b>1,589</b>	<b>48%</b>

