

# COMMONWEALTH OF PENNSYLVANIA

## Board of Probation and Parole

### MONTHLY STATISTICS REPORT

October 2015



**Tom Wolf**  
Governor

Michael L. Green  
Chairman

Edward L. Burke  
Member

Leslie M. Grey  
Member

Jeffrey R. Imboden  
Member

Craig R. McKay  
Member

Michael C. Potteiger  
Member

John R. Tuttle  
Member

Jennifer Storm  
Victim Advocate

**PBPP**  
AN EQUAL OPPORTUNITY EMPLOYER

Published November 10, 2015 by the PBPP Statistical Reporting and Evidence-Based Program Evaluation Office

Copyright © 2015 Commonwealth of Pennsylvania, Board of Probation and Parole. All rights reserved.

**Table 1**  
**WORKLOAD AND POPULATION CHANGES BY REGION / DISTRICT**  
**October 2015**

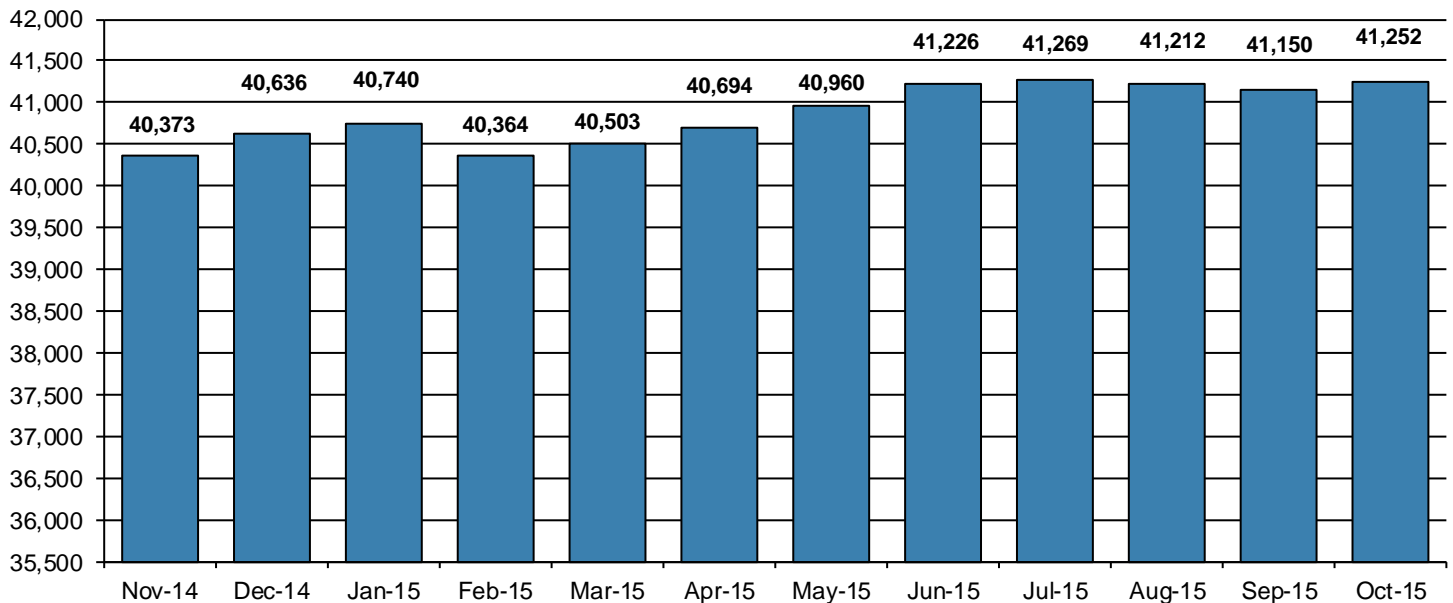
REGION / DISTRICT	Beginning Fiscal Yr <sup>1</sup> July 2015	Current Month Population	Fiscal YTD Index	Additions	Deletions		Number of Agents <sup>2</sup>	Average Workload <sup>3</sup>
					Recommits/ Revocations	Other Deletions		
CHESTER	3,248	3,280	101	95	33	92	41	115
PHILADELPHIA	11,820	11,865	100	387	154	195	144	122
<b>EASTERN REGION</b>	<b>15,068</b>	<b>15,145</b>	<b>101</b>	<b>482</b>	<b>187</b>	<b>287</b>	<b>185</b>	<b>121</b>
ALLENTOWN	4,882	4,873	100	212	66	112	63	130
HARRISBURG	6,033	5,953	99	212	66	107	74	133
SCRANTON	2,037	2,089	103	88	52	45	30	123
WILLIAMSPORT	1,229	1,251	102	52	9	27	16	124
<b>CENTRAL REGION</b>	<b>14,181</b>	<b>14,166</b>	<b>100</b>	<b>564</b>	<b>193</b>	<b>291</b>	<b>183</b>	<b>129</b>
ALTOONA	1,653	1,630	99	63	34	28	22	135
MERCER	3,167	3,153	100	133	38	93	39	128
ERIE	1,863	1,855	100	76	15	36	25	128
PITTSBURGH	5,294	5,303	100	212	129	106	69	129
<b>WESTERN REGION</b>	<b>11,977</b>	<b>11,941</b>	<b>100</b>	<b>484</b>	<b>216</b>	<b>263</b>	<b>155</b>	<b>130</b>
<b>TOTAL Supervised</b>	<b>41,226</b>	<b>41,252</b>	<b>100</b>	<b>1,530</b>	<b>596</b>	<b>841</b>	<b>523</b>	<b>126</b>

<sup>1</sup> effective June 30<sup>2</sup> Filled agent positions

PA Offenders in Other States	<b>3,343</b>	<b>3,403</b>	<b>102</b>	<b>71</b>	<b>6</b>	<b>51</b>
------------------------------	--------------	--------------	------------	-----------	----------	-----------

<sup>3</sup> Workload is a measure of the expected hours per month an agent's caseload and other duties require. An agent's available hours is 131.75.

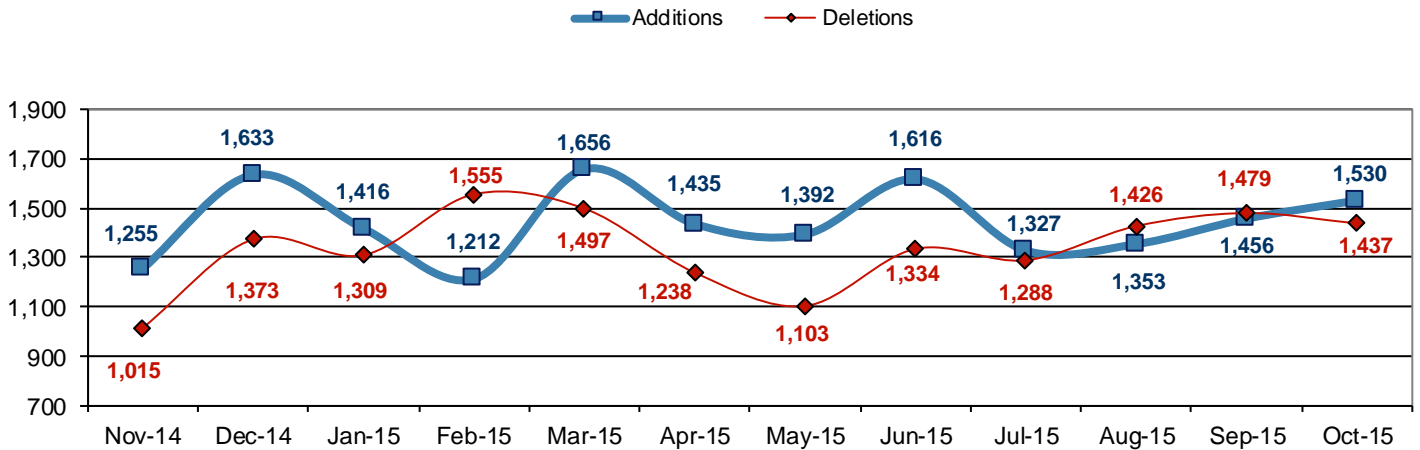
### Population - Retrospective Year View



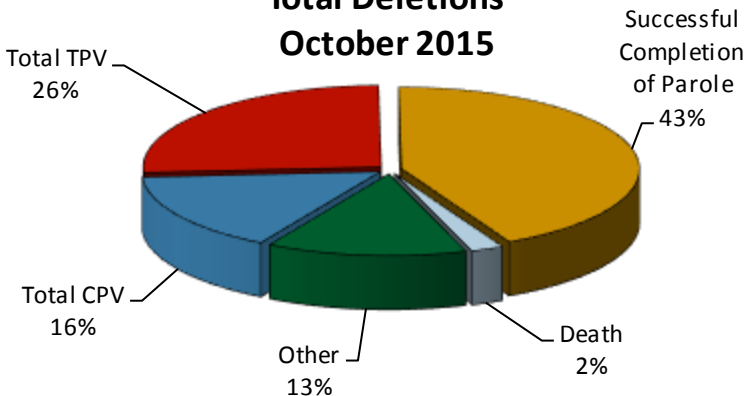
**Table 2  
SUPERVISED POPULATION ADDITIONS AND DELETIONS  
October 2015**

Population Additions and Deletions	Parole	Reparole	Special County Probation	Special County Parole	Other States' Probation	Other States' Parole	Monthly Total	Fiscal YTD Total
<b>ADDITIONS</b>	894	301	127	64	120	24	1,530	5,666
<b>DELETIONS-RECOMMITMENTS</b>								
<i>Convicted Parole Violator</i>								
State Corrections	147	40	5	0	0	0	192	860
County Corrections	1	3	18	7	0	0	29	147
Other States	0	0	0	0	3	0	3	11
<i>Total Convicted Parole Violator</i>	148	43	23	7	3	0	224	1,018
<i>Technical Parole Violator</i>								
State Corrections	210	84	7	0	0	0	301	1,051
County Corrections	3	29	26	11	1	0	70	278
Other States	0	0	0	0	1	0	1	6
<i>Total Technical Parole Violator</i>	213	113	33	11	2	0	372	1,335
<b>TOTAL RECOMMITMENTS</b>	361	156	56	18	5	0	596	2,353
Deletion Successful Completion	283	99	126	37	55	14	614	2,419
Deletion Death	19	8	4	0	1	0	32	117
Deletion Other	24	4	73	2	70	22	195	741
<b>TOTAL DELETIONS</b>	687	267	259	57	131	36	1,437	5,630

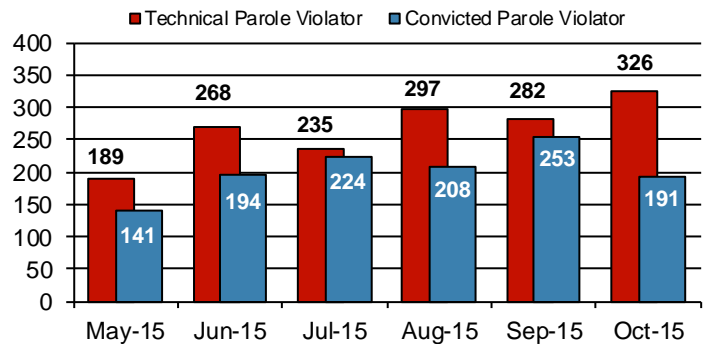
**Population Additions & Deletions-Retrospective Year View**



**Total Deletions  
October 2015**



**State Sentence Parole Revocations\***

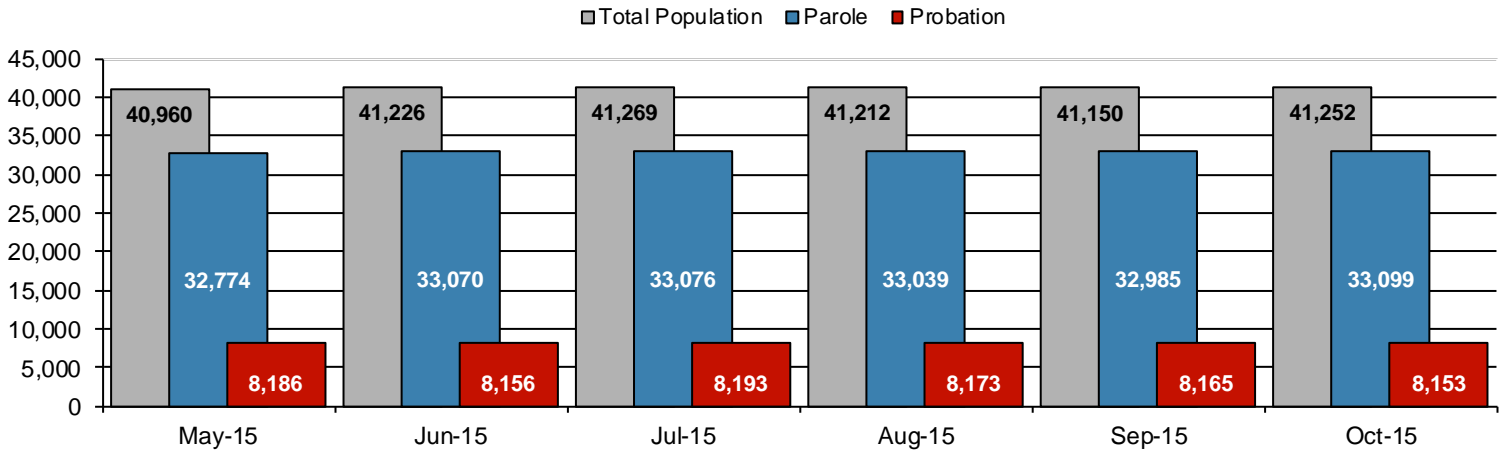


\* These revocations represent field case closure records and are dependent on case processing.

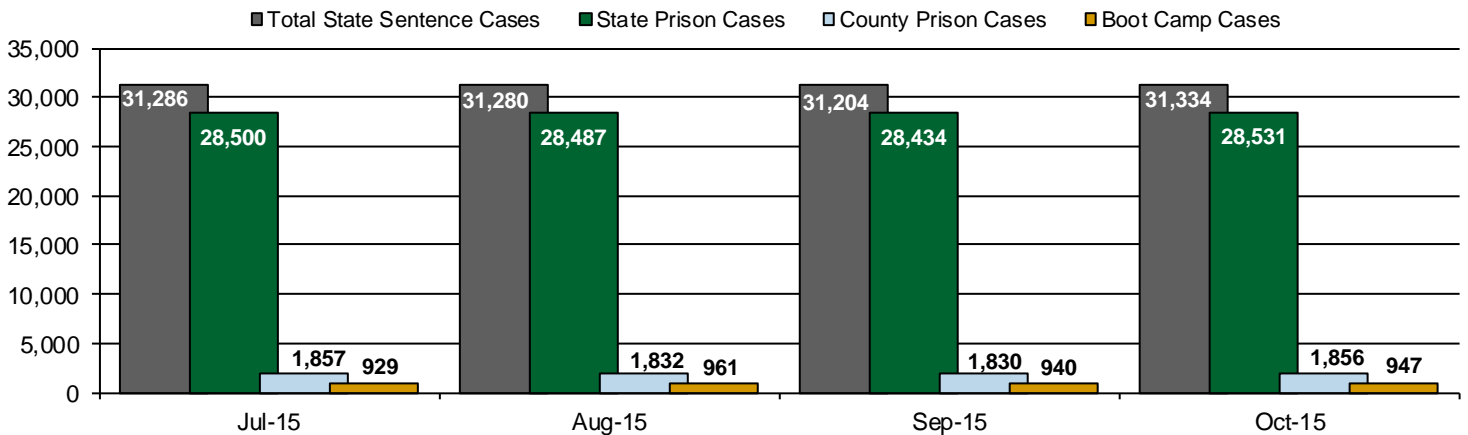
**Table 3**  
**SUPERVISED POPULATION BY ORIGINATING JURISDICTION and REGION / DISTRICT**  
**October 2015**

Region / District	PA Parole State Sentence				County		Other States		Total Population
	State Prisons	Boot Camp	County Prisons	Subtotal	Special Probation	Special Parole	Probation	Parole	
Chester	2,153	48	100	2,301	660	19	255	45	3,280
Philadelphia	9,136	216	275	9,627	1,571	7	508	152	11,865
<b>Eastern Region</b>	<b>11,289</b>	<b>264</b>	<b>375</b>	<b>11,928</b>	<b>2,231</b>	<b>26</b>	<b>763</b>	<b>197</b>	<b>15,145</b>
Allentown	3,408	111	394	3,913	468	6	385	101	4,873
Harrisburg	4,716	209	329	5,254	313	4	303	79	5,953
Scranton	1,444	32	178	1,654	169	0	203	63	2,089
Williamsport	911	12	87	1,010	115	8	95	23	1,251
<b>Central Region</b>	<b>10,479</b>	<b>364</b>	<b>988</b>	<b>11,831</b>	<b>1,065</b>	<b>18</b>	<b>986</b>	<b>266</b>	<b>14,166</b>
Altoona	1,073	44	80	1,197	244	78	87	24	1,630
Mercer	820	20	76	916	1,166	938	106	27	3,153
Erie	1,277	66	145	1,488	221	63	64	19	1,855
Pittsburgh	3,593	189	192	3,974	960	36	260	73	5,303
<b>Western Region</b>	<b>6,763</b>	<b>319</b>	<b>493</b>	<b>7,575</b>	<b>2,591</b>	<b>1,115</b>	<b>517</b>	<b>143</b>	<b>11,941</b>
<b>Total</b>	<b>28,531</b>	<b>947</b>	<b>1,856</b>	<b>31,334</b>	<b>5,887</b>	<b>1,159</b>	<b>2,266</b>	<b>606</b>	<b>41,252</b>
<b>Percent of Total</b>	<b>69%</b>	<b>2%</b>	<b>5%</b>	<b>76%</b>	<b>14%</b>	<b>3%</b>	<b>6%</b>	<b>1%</b>	<b>100%</b>

**Parole and Probation Supervised Populations**



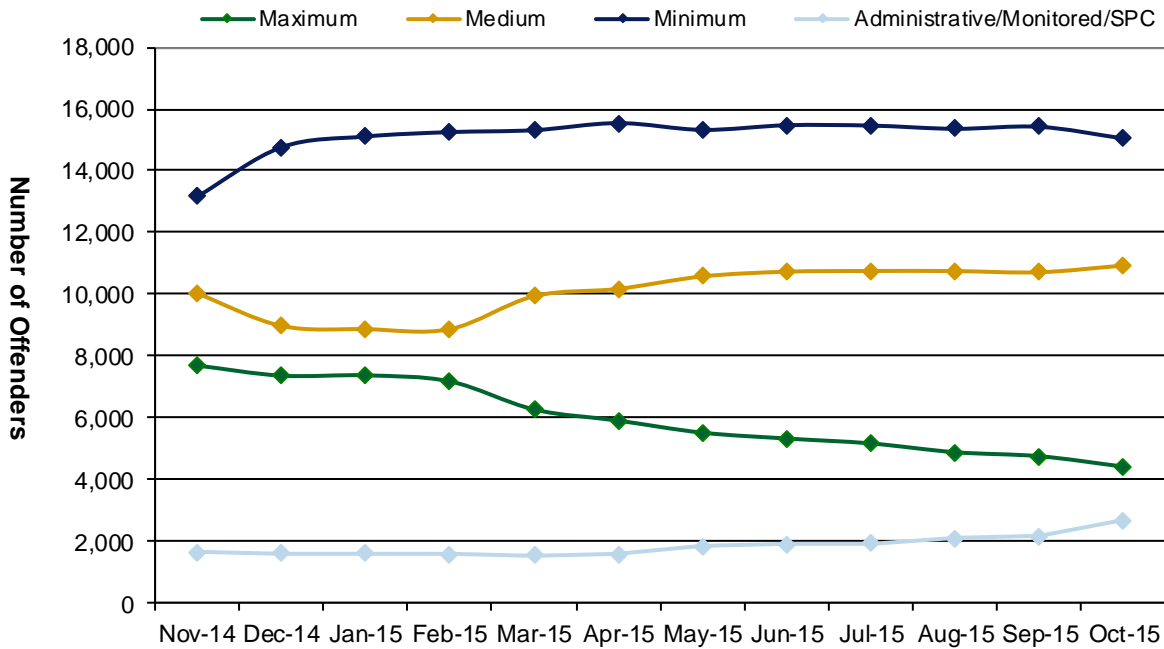
**Supervised State Sentence Cases**



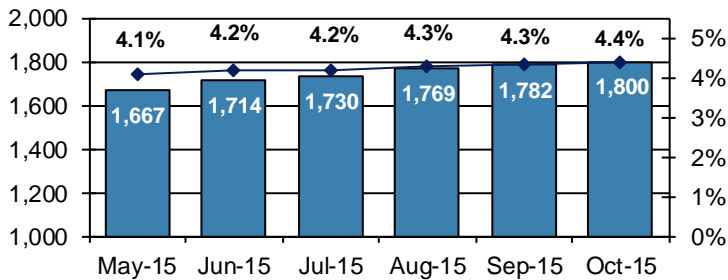
**Table 4**  
**SUPERVISED POPULATION BY GRADE OF SUPERVISION and REGION / DISTRICT**  
**October 2015**

Region / District	Reporting							Non-Reporting		Total Population
	Enhanced	Maximum	Medium	Minimum	ADM/MON /SPC	Not Classified	Subtotal	Absconder	Detainees	
Chester	4	171	681	1,579	296	4	2,735	111	434	3,280
Philadelphia	24	988	2,968	4,658	521	64	9,223	589	2,053	11,865
<b>Eastern Region</b>	<b>28</b>	<b>1,159</b>	<b>3,649</b>	<b>6,237</b>	<b>817</b>	<b>68</b>	<b>11,958</b>	<b>700</b>	<b>2,487</b>	<b>15,145</b>
Allentown	11	744	1,306	1,728	187	8	3,984	241	648	4,873
Harrisburg	20	843	1,521	1,965	426	25	4,800	291	862	5,953
Scranton	13	252	586	715	178	5	1,749	95	245	2,089
Williamsport	1	105	348	404	181	5	1,044	31	176	1,251
<b>Central Region</b>	<b>45</b>	<b>1,944</b>	<b>3,761</b>	<b>4,812</b>	<b>972</b>	<b>43</b>	<b>11,577</b>	<b>658</b>	<b>1,931</b>	<b>14,166</b>
Altoona	9	212	462	618	64	4	1,369	27	234	1,630
Mercer	4	307	775	1,303	326	5	2,720	74	359	3,153
Erie	8	268	594	558	130	3	1,561	62	232	1,855
Pittsburgh	39	536	1,693	1,516	363	21	4,168	279	856	5,303
<b>Western Region</b>	<b>60</b>	<b>1,323</b>	<b>3,524</b>	<b>3,995</b>	<b>883</b>	<b>33</b>	<b>9,818</b>	<b>442</b>	<b>1,681</b>	<b>11,941</b>
<b>Total</b>	<b>133</b>	<b>4,426</b>	<b>10,934</b>	<b>15,044</b>	<b>2,672</b>	<b>144</b>	<b>33,353</b>	<b>1,800</b>	<b>6,099</b>	<b>41,252</b>
<b>Percent of Total</b>	<b>&lt;1%</b>	<b>11%</b>	<b>27%</b>	<b>36%</b>	<b>6%</b>	<b>&lt;1%</b>	<b>81%</b>	<b>4%</b>	<b>15%</b>	<b>100%</b>

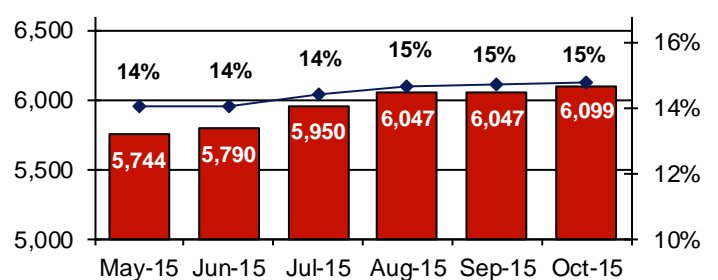
**PBPP Active Cases By Supervision Level**



**Number of Absconders and % of Population**



**Number of Detainees and % of Population**



**Table 5**  
**SUPERVISED POPULATION BY GENDER, RACE and REGION / DISTRICT**  
**October 2015**

Region / District	Male					Female					% Male	Total Population
	White	Black	Hispanic	Other <sup>1</sup>	Total	White	Black	Hispanic	Other <sup>1</sup>	Total		
Chester	1,313	1,513	133	34	2,993	206	74	4	3	287	91%	3,280
Philadelphia	1,530	7,900	1,475	145	11,050	261	455	89	10	815	93%	11,865
<b>EASTERN REGION</b>	<b>2,843</b>	<b>9,413</b>	<b>1,608</b>	<b>179</b>	<b>14,043</b>	<b>467</b>	<b>529</b>	<b>93</b>	<b>13</b>	<b>1,102</b>	<b>93%</b>	<b>15,145</b>
Allentown	2,114	1,054	1,197	36	4,401	327	74	61	10	472	90%	4,873
Harrisburg	2,693	1,935	718	32	5,378	411	106	52	6	575	90%	5,953
Scranton	1,316	380	120	13	1,829	228	18	12	2	260	88%	2,089
Williamsport	852	121	18	5	996	224	25	4	2	255	80%	1,251
<b>CENTRAL REGION</b>	<b>6,975</b>	<b>3,490</b>	<b>2,053</b>	<b>86</b>	<b>12,604</b>	<b>1,190</b>	<b>223</b>	<b>129</b>	<b>20</b>	<b>1,562</b>	<b>89%</b>	<b>14,166</b>
Altoona	1,184	144	8	5	1,341	275	14	0	0	289	82%	1,630
Mercer	2,013	390	19	6	2,428	624	89	7	5	725	77%	3,153
Erie	1,129	421	59	12	1,621	193	34	4	3	234	87%	1,855
Pittsburgh	2,235	2,461	56	14	4,766	384	143	5	5	537	90%	5,303
<b>WESTERN REGION</b>	<b>6,561</b>	<b>3,416</b>	<b>142</b>	<b>37</b>	<b>10,156</b>	<b>1,476</b>	<b>280</b>	<b>16</b>	<b>13</b>	<b>1,785</b>	<b>85%</b>	<b>11,941</b>
<b>TOTAL</b>	<b>16,379</b>	<b>16,319</b>	<b>3,803</b>	<b>302</b>	<b>36,803</b>	<b>3,133</b>	<b>1,032</b>	<b>238</b>	<b>46</b>	<b>4,449</b>	<b>89%</b>	<b>41,252</b>

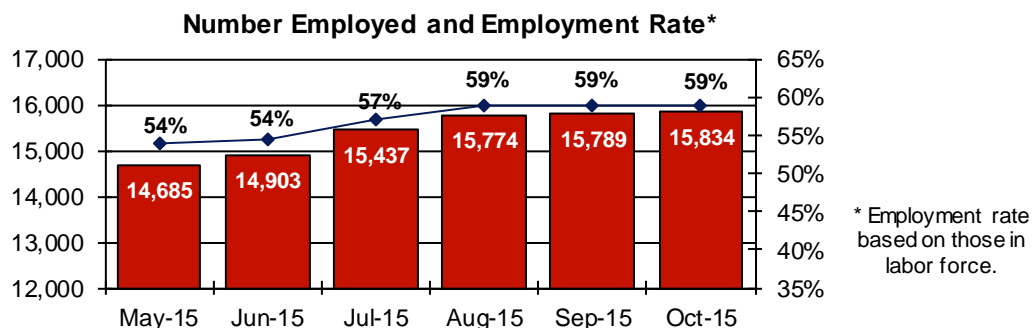
<sup>1</sup> "Other" includes Asian, Pacific Islander, Native American, Native Alaskan, and cases not elsewhere classified.

**Table 6**  
**SUPERVISED POPULATION BY EMPLOYMENT STATUS and REGION / DISTRICT**  
**October 2015**

Region / District	In Labor Force				Not In Labor Force					Total Population
	Employed Part Time	Employed Full Time	Unemployed	Employment Rate	Unable to Work <sup>2</sup>	Student	Unearned Income <sup>3</sup>	Unknown	Non-Reporting	
Chester	164	1,292	897	62%	264	26	92	0	545	3,280
Philadelphia	950	2,825	3,733	50%	963	259	493	0	2,642	11,865
<b>EASTERN REGION</b>	<b>1,114</b>	<b>4,117</b>	<b>4,630</b>	<b>53%</b>	<b>1,227</b>	<b>285</b>	<b>585</b>	<b>0</b>	<b>3,187</b>	<b>15,145</b>
Allentown	233	1,817	1,043	66%	571	33	287	0	889	4,873
Harrisburg	233	2,028	1,965	54%	337	25	212	0	1,153	5,953
Scranton	42	915	449	68%	147	15	180	1	340	2,089
Williamsport	97	563	162	80%	107	13	102	0	207	1,251
<b>CENTRAL REGION</b>	<b>605</b>	<b>5,323</b>	<b>3,619</b>	<b>62%</b>	<b>1,162</b>	<b>86</b>	<b>781</b>	<b>1</b>	<b>2,589</b>	<b>14,166</b>
Altoona	173	438	493	55%	115	15	135	0	261	1,630
Mercer	288	962	829	60%	322	28	290	1	433	3,153
Erie	127	589	511	58%	153	9	172	0	294	1,855
Pittsburgh	278	1,820	979	68%	817	40	233	1	1,135	5,303
<b>WESTERN REGION</b>	<b>866</b>	<b>3,809</b>	<b>2,812</b>	<b>62%</b>	<b>1,407</b>	<b>92</b>	<b>830</b>	<b>2</b>	<b>2,123</b>	<b>11,941</b>
<b>TOTAL</b>	<b>2,585</b>	<b>13,249</b>	<b>11,061</b>	<b>59%</b>	<b>3,796</b>	<b>463</b>	<b>2,196</b>	<b>3</b>	<b>7,899</b>	<b>41,252</b>

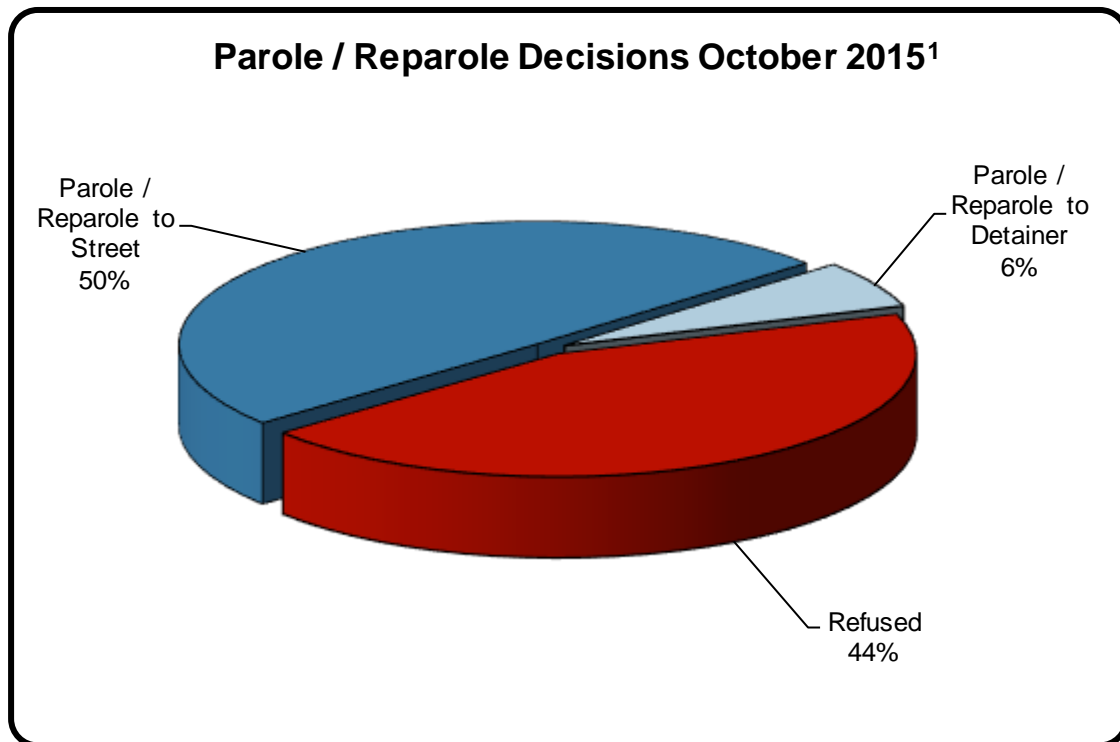
<sup>2</sup> Offender is unable to work due to a physical or mental disability, is a care provider, attends inpatient treatment, etc.

<sup>3</sup> Offender collects income assistance, workman's compensation, monthly pension, Social Security, disability payments, etc.



**Table 7**  
**BOARD DECISIONS**  
**October 2015**

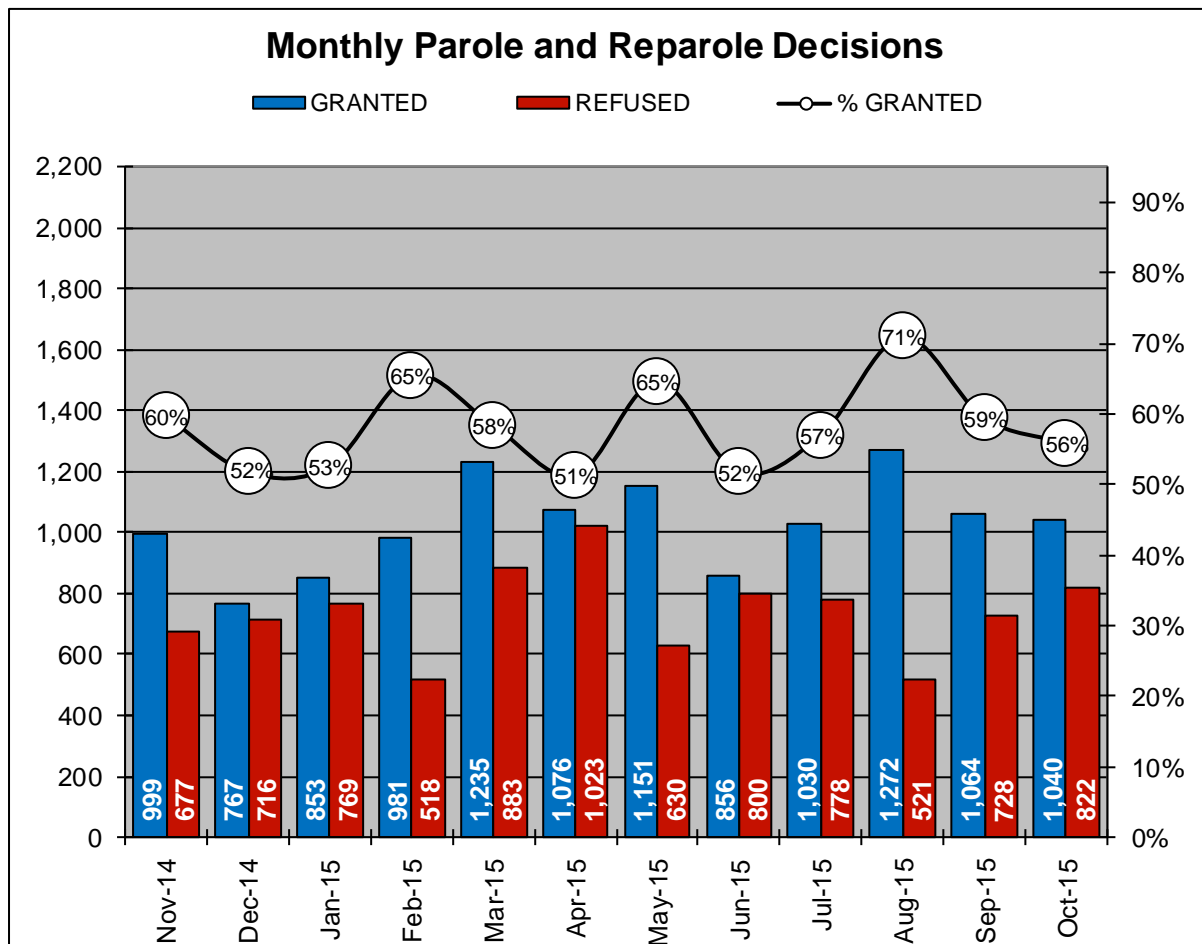
<b>Type of Decision</b>		<b>Total</b>
Parole / Reparole to Street	924	
Parole / Reparole to Detainer	116	
Refused	822	
<b>Total Considered</b>		<b>1,862</b>
Recommitments as TPV	417	
Recommitments as CPV	269	
Recommitments as CPV and TPV	5	
<b>Total Recommitments</b>		<b>691</b>
Refer to Prior Action		90
Detain in Parole Violator Center		229
Other Decisions		1,124
<b>Total Decisions</b>		<b>3,996</b>



<sup>1</sup> The 56% does not necessarily reflect the overall grant rate, but rather is the calculated percent of grant decisions for the total number of Board Actions produced during this period of time.

**Table 8**  
**MONTHLY PAROLE and REPAROLE DECISIONS**  
**October 2015**

MONTH-YEAR	GRANTED	REFUSED	CONSIDERED	% GRANTED
Nov-14	999	677	1,676	60%
Dec-14	767	716	1,483	52%
Jan-15	853	769	1,622	53%
Feb-15	981	518	1,499	65%
Mar-15	1,235	883	2,118	58%
Apr-15	1,076	1,023	2,099	51%
May-15	1,151	630	1,781	65%
Jun-15	856	800	1,656	52%
Jul-15	1,030	778	1,808	57%
Aug-15	1,272	521	1,793	71%
Sep-15	1,064	728	1,792	59%
Oct-15	1,040	822	1,862	56%
<b>Monthly Average Over 12 Months</b>	1,027	739	1,766	58%



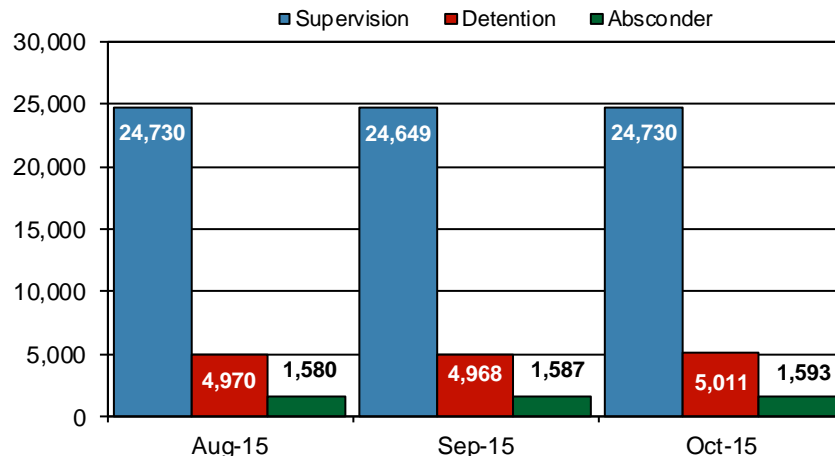


## PBPP Population Breakdown by Place of Incarceration/Jurisdiction - October 2015

Offender Status - October 2015					
Status	State Prison	County Prison	County Sentence	Other States' Cases	Total
Supervision	23,405	1,325	5,874	2,749	33,353
Absconder	1,440	153	206	1	1,800
Detention	4,633	378	966	122	6,099
<b>Total</b>	<b>29,478</b>	<b>1,856</b>	<b>7,046</b>	<b>2,872</b>	<b>41,252</b>

PBPP Monthly Population Profile						
Offender Status	May-15	Jun-15	Jul-15	Aug-15	Sep-15	Oct-15
<b>State sentence from state institution</b>	<b>29,138</b>	<b>29,436</b>	<b>29,429</b>	<b>29,448</b>	<b>29,374</b>	<b>29,478</b>
<i>Supervision</i>	23,387	23,609	23,493	23,401	23,341	23,405
<i>Absconder</i>	1,351	1,396	1,393	1,439	1,431	1,440
<i>Detention</i>	4,400	4,431	4,543	4,608	4,602	4,633
<b>State sentence from county prison</b>	<b>1,827</b>	<b>1,848</b>	<b>1,857</b>	<b>1,832</b>	<b>1,830</b>	<b>1,856</b>
<i>Supervision</i>	1,378	1,387	1,367	1,329	1,308	1,325
<i>Absconder</i>	128	134	146	141	156	153
<i>Detention</i>	321	327	344	362	366	378
<b>County sentence Prob &amp; Parole</b>	<b>7,122</b>	<b>7,057</b>	<b>7,086</b>	<b>7,052</b>	<b>7,050</b>	<b>7,046</b>
<i>Supervision</i>	6,004	5,943	5,941	5,895	5,888	5,874
<i>Absconder</i>	188	184	191	188	195	206
<i>Detention</i>	930	930	954	969	967	966
<b>Other states' sentence Prob &amp; Parole</b>	<b>2,873</b>	<b>2,885</b>	<b>2,897</b>	<b>2,880</b>	<b>2,896</b>	<b>2,872</b>
<i>Supervision</i>	2,780	2,783	2,788	2,771	2,784	2,749
<i>Absconder</i>	0	0	0	1	0	1
<i>Detention</i>	93	102	109	108	112	122
<b>PBPP Population end of month</b>	<b>40,960</b>	<b>41,226</b>	<b>41,269</b>	<b>41,212</b>	<b>41,150</b>	<b>41,252</b>

State Sentence Cases by Offender Status



## PBPP Population Breakdown by Place of Incarceration/Jurisdiction - October 2015

Additions and Deletions						
	May-15	Jun-15	Jul-15	Aug-15	Sep-15	Oct-15
<b>Total Additions</b>	<b>1,392</b>	<b>1,616</b>	<b>1,327</b>	<b>1,353</b>	<b>1,456</b>	<b>1,530</b>
State sentence - State Prison	967	1,215	926	988	1,003	1,103
State sentence - County Prison	64	94	79	53	91	92
County sentence Prob & Parole	220	160	183	187	201	191
Other states' sentence	141	147	139	125	161	144
<b>Total Deletions</b>	<b>1,103</b>	<b>1,334</b>	<b>1,288</b>	<b>1,426</b>	<b>1,479</b>	<b>1,437</b>
<b>State sentence - State Prison</b>	<b>654</b>	<b>822</b>	<b>821</b>	<b>880</b>	<b>962</b>	<b>893</b>
<i>Technical Violator</i>	165	243	207	267	257	294
<i>Convicted Violator</i>	134	183	216	200	246	187
<i>Successful Completion</i>	325	352	361	363	409	359
<i>Other Case Closure</i>	30	44	37	50	50	53
<b>State sentence - County Prison</b>	<b>62</b>	<b>64</b>	<b>67</b>	<b>69</b>	<b>72</b>	<b>61</b>
<i>Technical Violator</i>	24	25	28	30	25	32
<i>Convicted Violator</i>	7	11	8	8	7	4
<i>Successful Completion</i>	28	27	30	23	33	23
<i>Other Case Closure</i>	3	1	1	8	7	2
<b>County sentence Prob &amp; Parole</b>	<b>276</b>	<b>312</b>	<b>273</b>	<b>335</b>	<b>298</b>	<b>316</b>
<i>Technical Violator</i>	31	54	44	56	44	44
<i>Convicted Violator</i>	33	36	27	37	37	30
<i>Successful Completion</i>	123	142	126	164	138	163
<i>Other Case Closure</i>	89	80	76	78	79	79
<b>Other states' sentence</b>	<b>111</b>	<b>136</b>	<b>127</b>	<b>142</b>	<b>147</b>	<b>167</b>
<i>Technical Violator</i>	0	1	1	3	1	2
<i>Convicted Violator</i>	1	3	3	2	3	3
<i>Successful Completion</i>	44	54	44	50	64	69
<i>Other Case Closure</i>	66	78	79	87	79	93
<b>PBPP Population end of month</b>	<b>40,960</b>	<b>41,226</b>	<b>41,269</b>	<b>41,212</b>	<b>41,150</b>	<b>41,252</b>