

# COMMONWEALTH OF PENNSYLVANIA

## Board of Probation and Parole

### MONTHLY PROGRAM REPORT

November 2013



**Tom Corbett**  
Governor

Michael C. Potteiger  
Chairman

Edward L. Burke  
Member

Randy P. Feathers  
Member

Michael L. Green  
Member

Leslie M. Grey  
Member

Jeffrey R. Imboden  
Member

Craig R. McKay  
Member

John R. Tuttle  
Member

Lloyd A. White  
Member

Vacant  
Victim Advocate

**PBPP**  
AN EQUAL OPPORTUNITY EMPLOYER

Published December 13, 2013 by the PBPP Statistical Reporting and Evidence-Based Program Evaluation Office

Copyright © 2013 Commonwealth of Pennsylvania, Board of Probation and Parole. All rights reserved.

**Table 1**  
**WORKLOAD AND POPULATION CHANGES BY REGION / DISTRICT**  
**November 2013**

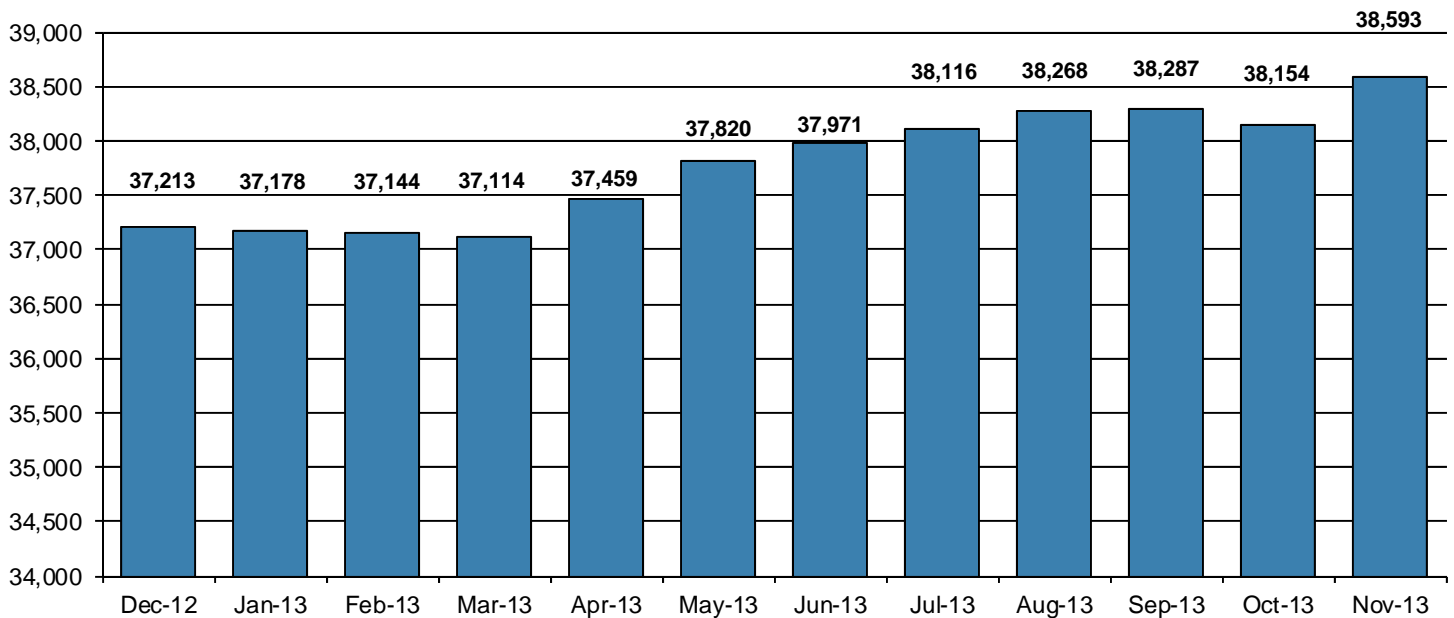
REGION / DISTRICT	Beginning Fiscal Yr <sup>1</sup> July 2013	Current Month Population	Fiscal YTD Index	Additions	Deletions		Number of Agents <sup>2</sup>	Average Workload <sup>3</sup>
					Recommits/ Revocations	Other Deletions		
CHESTER	3,154	3,170	101	90	22	50	40	137
PHILADELPHIA	10,676	10,844	102	361	103	161	137	138
<b>EASTERN REGION</b>	<b>13,830</b>	<b>14,014</b>	<b>101</b>	<b>451</b>	<b>125</b>	<b>211</b>	<b>177</b>	<b>138</b>
ALLENTOWN	4,466	4,652	104	223	38	86	58	157
HARRISBURG	5,328	5,429	102	202	57	75	68	158
SCRANTON	1,961	1,856	95	67	20	33	31	119
WILLIAMSPORT	1,104	1,164	105	29	10	23	14	158
<b>CENTRAL REGION</b>	<b>12,859</b>	<b>13,101</b>	<b>102</b>	<b>521</b>	<b>125</b>	<b>217</b>	<b>171</b>	<b>151</b>
ALTOONA	1,502	1,524	101	48	9	24	22	150
MERCER	3,151	3,206	102	197	21	93	41	150
ERIE	1,762	1,788	101	63	8	15	26	146
PITTSBURGH	4,867	4,960	102	171	72	90	68	153
<b>WESTERN REGION</b>	<b>11,282</b>	<b>11,478</b>	<b>102</b>	<b>479</b>	<b>110</b>	<b>222</b>	<b>157</b>	<b>151</b>
<b>TOTAL Supervised</b>	<b>37,971</b>	<b>38,593</b>	<b>102</b>	<b>1,451</b>	<b>360</b>	<b>650</b>	<b>505</b>	<b>146</b>

<sup>1</sup> effective June 30<sup>2</sup> Filled agent positions

PA Offenders in Other States	<b>3,189</b>	<b>3,143</b>	<b>99</b>	<b>64</b>	<b>6</b>	<b>61</b>
------------------------------	--------------	--------------	-----------	-----------	----------	-----------

<sup>3</sup> Workload is a measure of the expected hours per month an agent's caseload and other duties require. An agent's available hours is 131.75.

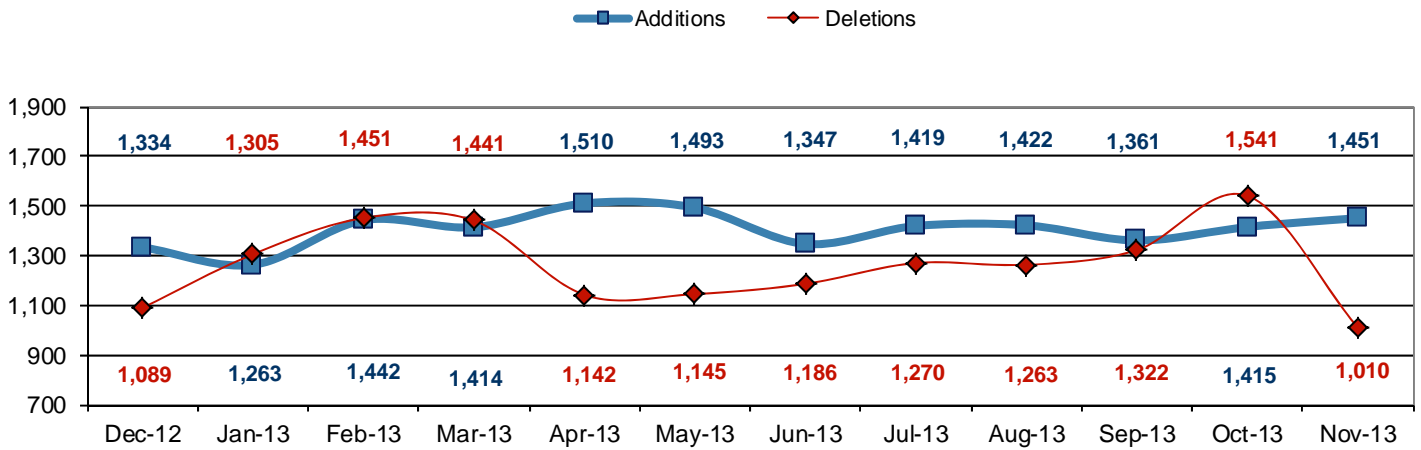
### Population - Retrospective Year View



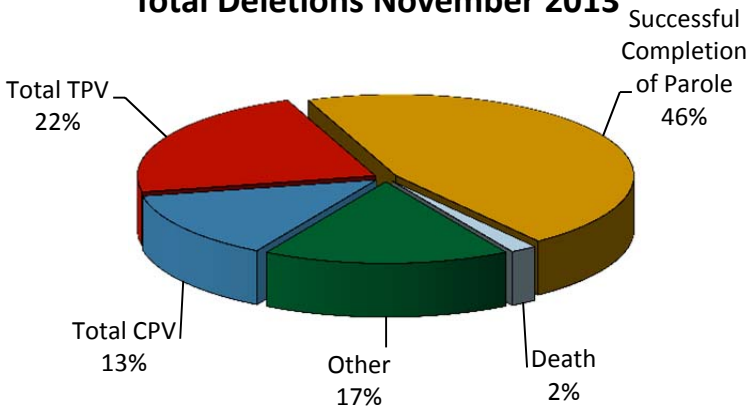
**Table 2  
SUPERVISED POPULATION ADDITIONS AND DELETIONS  
November 2013**

Population Additions and Deletions	Parole	Reparole	Special County Probation	Special County Parole	Other States' Probation	Other States' Parole	Monthly Total	Fiscal YTD Total
<b>ADDITIONS</b>	809	264	158	100	94	26	1,451	7,068
<b>DELETIONS-RECOMMITMENTS</b>								
<i>Convicted Parole Violator</i>								
State Corrections	86	27	1	0	0	0	114	875
County Corrections	8	1	8	3	0	0	20	187
Other States	0	0	0	0	2	0	2	5
<i>Total Convicted Parole Violator</i>	94	28	9	3	2	0	136	1,067
<i>Technical Parole Violator</i>								
State Corrections	132	47	7	0	0	0	186	1,259
County Corrections	5	6	23	4	0	0	38	239
Other States	0	0	0	0	0	0	0	8
<i>Total Technical Parole Violator</i>	137	53	30	4	0	0	224	1,506
<b>TOTAL RECOMMITMENTS</b>	231	81	39	7	2	0	360	2,573
Deletion Successful Completion	237	50	88	38	45	5	463	2,756
Deletion Death	9	2	5	1	1	0	18	117
Deletion Other	9	3	57	6	76	18	169	960
<b>TOTAL DELETIONS</b>	486	136	189	52	124	23	1,010	6,406

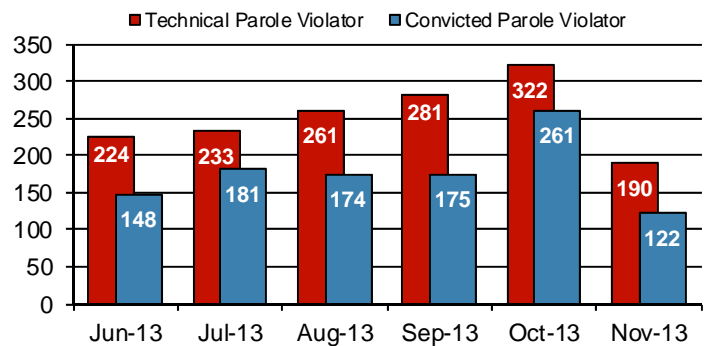
**Population Additions & Deletions-Retrospective Year View**



**Total Deletions November 2013**



**State Sentence Parole Revocations\***



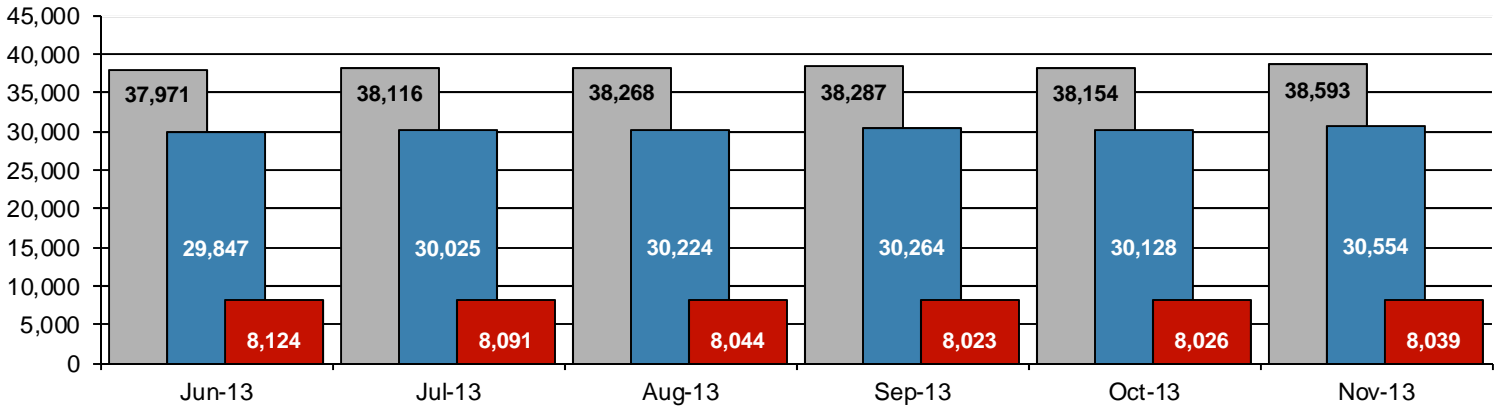
\* These revocations represent field case closure records and are dependent on case processing.

**Table 3  
SUPERVISED POPULATION BY ORIGINATING JURISDICTION and REGION / DISTRICT  
November 2013**

Region / District	PA Parole State Sentence				County		Other States		Total Population
	State Prisons	Boot Camp	County Prisons	Subtotal	Special Probation	Special Parole	Probation	Parole	
Chester	2,004	36	117	2,157	685	22	250	56	3,170
Philadelphia	8,431	188	227	8,846	1,275	10	551	162	10,844
<b>Eastern Region</b>	<b>10,435</b>	<b>224</b>	<b>344</b>	<b>11,003</b>	<b>1,960</b>	<b>32</b>	<b>801</b>	<b>218</b>	<b>14,014</b>
Allentown	3,279	104	315	3,698	483	1	391	79	4,652
Harrisburg	4,338	205	197	4,740	336	3	282	68	5,429
Scranton	1,291	11	159	1,461	167	1	170	57	1,856
Williamsport	805	9	62	876	145	6	115	22	1,164
<b>Central Region</b>	<b>9,713</b>	<b>329</b>	<b>733</b>	<b>10,775</b>	<b>1,131</b>	<b>11</b>	<b>958</b>	<b>226</b>	<b>13,101</b>
Altoona	988	26	83	1,097	274	48	84	21	1,524
Mercer	794	24	42	860	1,331	883	113	19	3,206
Erie	1,192	71	193	1,456	198	43	69	22	1,788
Pittsburgh	3,295	240	175	3,710	871	54	249	76	4,960
<b>Western Region</b>	<b>6,269</b>	<b>361</b>	<b>493</b>	<b>7,123</b>	<b>2,674</b>	<b>1,028</b>	<b>515</b>	<b>138</b>	<b>11,478</b>
<b>Total</b>	<b>26,417</b>	<b>914</b>	<b>1,570</b>	<b>28,901</b>	<b>5,765</b>	<b>1,071</b>	<b>2,274</b>	<b>582</b>	<b>38,593</b>
<b>Percent of Total</b>	<b>68%</b>	<b>2%</b>	<b>4%</b>	<b>74%</b>	<b>15%</b>	<b>3%</b>	<b>6%</b>	<b>2%</b>	<b>100%</b>

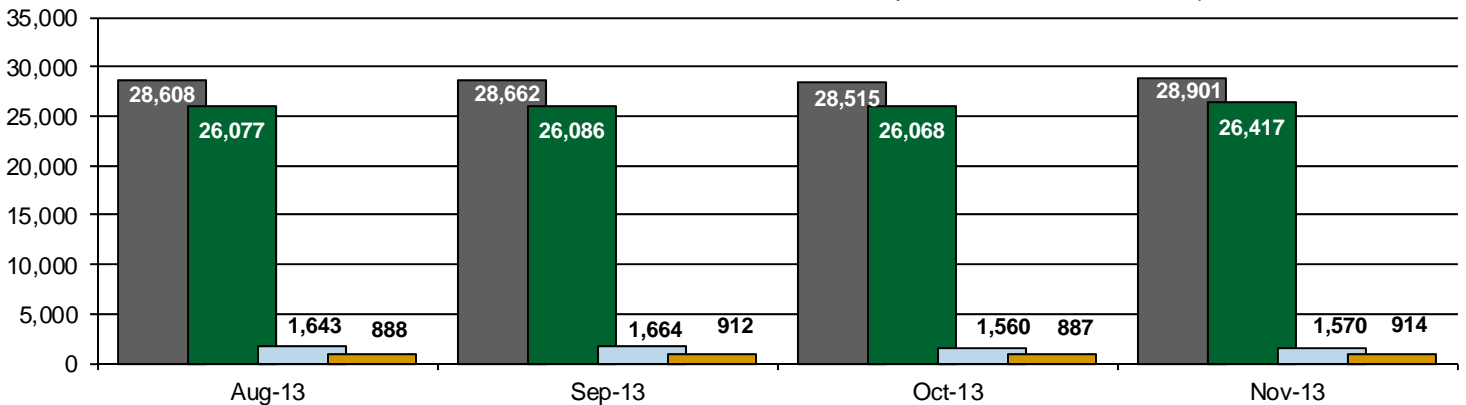
**Parole and Probation Supervised Populations**

□ Total Population   ■ Parole   ■ Probation



**Supervised State Sentence Cases**

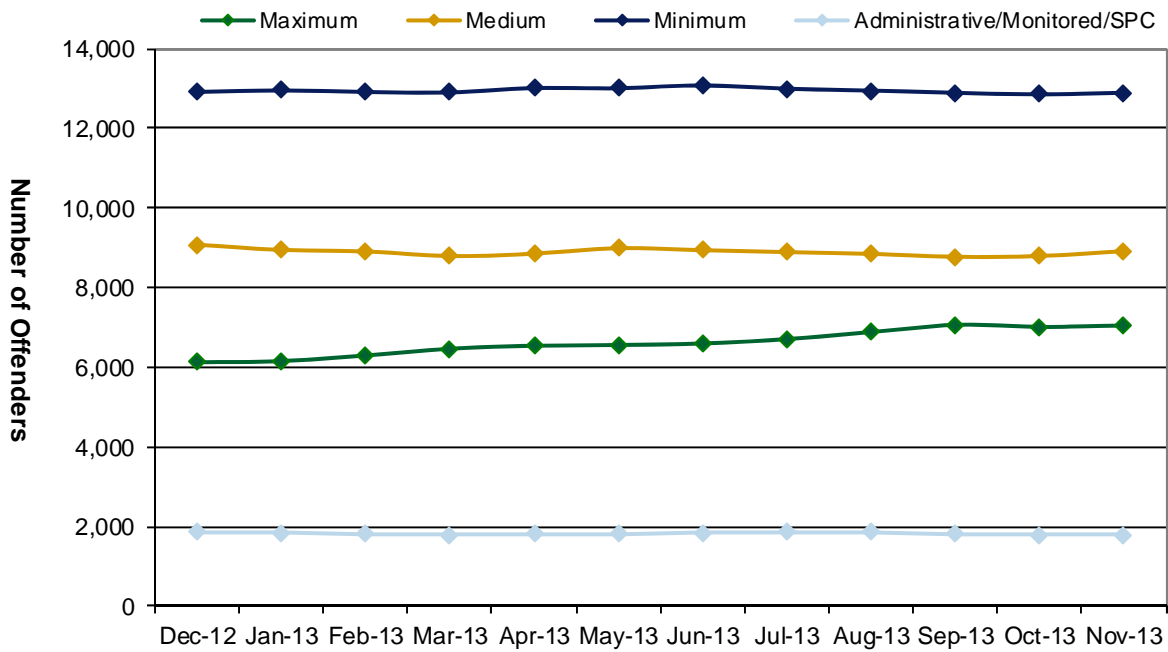
■ Total State Sentence Cases   ■ State Prison Cases   □ County Prison Cases   ■ Boot Camp Cases



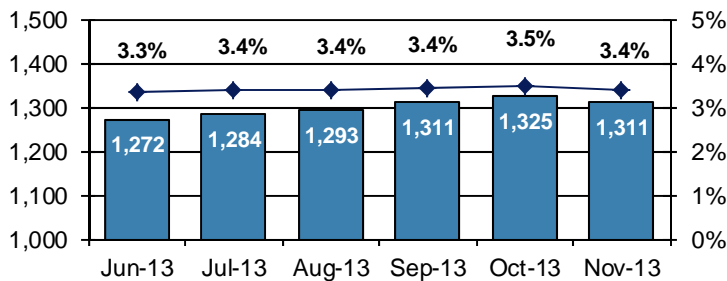
**Table 4**  
**SUPERVISED POPULATION BY GRADE OF SUPERVISION and REGION / DISTRICT**  
**November 2013**

Region / District	Reporting							Non-Reporting		Total Population
	Enhanced	Maximum	Medium	Minimum	ADM/MON /SPC	Not Classified	Subtotal	Absconder	Detainees	
Chester	2	267	732	1,432	215	10	2,658	64	448	3,170
Philadelphia	17	1,712	2,180	3,983	383	69	8,344	418	2,082	10,844
<b>Eastern Region</b>	<b>19</b>	<b>1,979</b>	<b>2,912</b>	<b>5,415</b>	<b>598</b>	<b>79</b>	<b>11,002</b>	<b>482</b>	<b>2,530</b>	<b>14,014</b>
Allentown	21	1,030	1,064	1,380	191	80	3,766	184	702	4,652
Harrisburg	33	1,207	1,217	1,552	277	17	4,303	239	887	5,429
Scranton	18	233	399	686	120	5	1,461	56	339	1,856
Williamsport	1	134	310	413	137	1	996	19	149	1,164
<b>Central Region</b>	<b>73</b>	<b>2,604</b>	<b>2,990</b>	<b>4,031</b>	<b>725</b>	<b>103</b>	<b>10,526</b>	<b>498</b>	<b>2,077</b>	<b>13,101</b>
Altoona	3	312	413	496	58	2	1,284	30	210	1,524
Mercer	3	395	901	1,252	230	5	2,786	59	361	3,206
Erie	8	480	402	520	117	3	1,530	34	224	1,788
Pittsburgh	29	1,275	1,294	1,177	50	13	3,838	208	914	4,960
<b>Western Region</b>	<b>43</b>	<b>2,462</b>	<b>3,010</b>	<b>3,445</b>	<b>455</b>	<b>23</b>	<b>9,438</b>	<b>331</b>	<b>1,709</b>	<b>11,478</b>
<b>Total</b>	<b>135</b>	<b>7,045</b>	<b>8,912</b>	<b>12,891</b>	<b>1,778</b>	<b>205</b>	<b>30,966</b>	<b>1,311</b>	<b>6,316</b>	<b>38,593</b>
<b>Percent of Total</b>	<b>&lt;1%</b>	<b>18%</b>	<b>23%</b>	<b>33%</b>	<b>5%</b>	<b>1%</b>	<b>81%</b>	<b>3%</b>	<b>16%</b>	<b>100%</b>

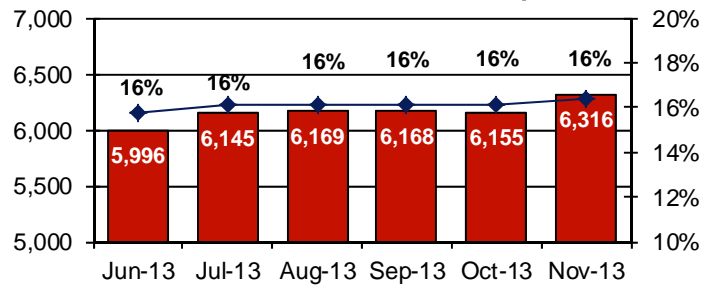
**PBPP Active Cases By Supervision Level**



**Number of Absconders and % of Population**



**Number of Detainees and % of Population**



**Table 5**  
**SUPERVISED POPULATION BY GENDER, RACE and REGION / DISTRICT**  
**November 2013**

Region / District	Male					Female					% Male	Total Population
	White	Black	Hispanic	Other <sup>1</sup>	Total	White	Black	Hispanic	Other <sup>1</sup>	Total		
Chester	1,308	1,423	132	34	2,897	193	67	7	6	273	91%	3,170
Philadelphia	1,399	7,245	1,320	151	10,115	224	432	63	10	729	93%	10,844
<b>EASTERN REGION</b>	<b>2,707</b>	<b>8,668</b>	<b>1,452</b>	<b>185</b>	<b>13,012</b>	<b>417</b>	<b>499</b>	<b>70</b>	<b>16</b>	<b>1,002</b>	<b>93%</b>	<b>14,014</b>
Allentown	2,052	1,000	1,085	39	4,176	327	83	61	5	476	90%	4,652
Harrisburg	2,430	1,754	607	41	4,832	426	116	50	5	597	89%	5,429
Scranton	1,149	360	102	12	1,623	197	22	11	3	233	87%	1,856
Williamsport	798	110	18	3	929	209	16	8	2	235	80%	1,164
<b>CENTRAL REGION</b>	<b>6,429</b>	<b>3,224</b>	<b>1,812</b>	<b>95</b>	<b>11,560</b>	<b>1,159</b>	<b>237</b>	<b>130</b>	<b>15</b>	<b>1,541</b>	<b>88%</b>	<b>13,101</b>
Altoona	1,102	152	5	7	1,266	244	13	0	1	258	83%	1,524
Mercer	2,091	365	15	9	2,480	643	77	2	4	726	77%	3,206
Erie	1,074	399	52	10	1,535	205	41	5	2	253	86%	1,788
Pittsburgh	2,090	2,256	46	22	4,414	377	160	2	7	546	89%	4,960
<b>WESTERN REGION</b>	<b>6,357</b>	<b>3,172</b>	<b>118</b>	<b>48</b>	<b>9,695</b>	<b>1,469</b>	<b>291</b>	<b>9</b>	<b>14</b>	<b>1,783</b>	<b>84%</b>	<b>11,478</b>
<b>TOTAL</b>	<b>15,493</b>	<b>15,064</b>	<b>3,382</b>	<b>328</b>	<b>34,267</b>	<b>3,045</b>	<b>1,027</b>	<b>209</b>	<b>45</b>	<b>4,326</b>	<b>89%</b>	<b>38,593</b>

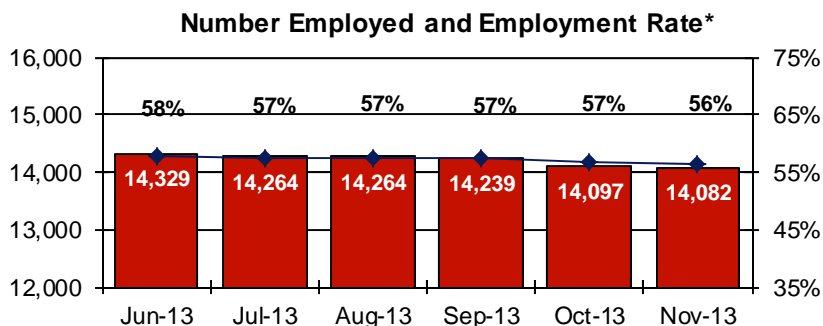
<sup>1</sup> "Other" includes Asian, Pacific Islander, Native American, Native Alaskan, and cases not elsewhere classified.

**Table 6**  
**SUPERVISED POPULATION BY EMPLOYMENT STATUS and REGION / DISTRICT**  
**November 2013**

Region / District	In Labor Force				Not In Labor Force					Total Population
	Employed Part Time	Employed Full Time	Unemployed	Employment Rate	Unable to Work <sup>2</sup>	Student	Unearned Income <sup>3</sup>	Unknown	Non-Reporting	
Chester	178	1,214	857	62%	295	31	80	3	512	3,170
Philadelphia	675	2,391	3,927	44%	785	154	408	4	2,500	10,844
<b>EASTERN REGION</b>	<b>853</b>	<b>3,605</b>	<b>4,784</b>	<b>48%</b>	<b>1,080</b>	<b>185</b>	<b>488</b>	<b>7</b>	<b>3,012</b>	<b>14,014</b>
Allentown	274	1,602	871	68%	649	48	322	0	886	4,652
Harrisburg	246	1,744	1,839	52%	279	30	164	1	1,126	5,429
Scranton	42	868	297	75%	64	10	180	0	395	1,856
Williamsport	89	521	168	78%	109	19	90	0	168	1,164
<b>CENTRAL REGION</b>	<b>651</b>	<b>4,735</b>	<b>3,175</b>	<b>63%</b>	<b>1,101</b>	<b>107</b>	<b>756</b>	<b>1</b>	<b>2,575</b>	<b>13,101</b>
Altoona	131	449	435	57%	104	15	150	0	240	1,524
Mercer	280	945	827	60%	341	46	346	1	420	3,206
Erie	118	552	534	56%	160	21	145	0	258	1,788
Pittsburgh	262	1,501	1,163	60%	630	53	229	0	1,122	4,960
<b>WESTERN REGION</b>	<b>791</b>	<b>3,447</b>	<b>2,959</b>	<b>59%</b>	<b>1,235</b>	<b>135</b>	<b>870</b>	<b>1</b>	<b>2,040</b>	<b>11,478</b>
<b>TOTAL</b>	<b>2,295</b>	<b>11,787</b>	<b>10,918</b>	<b>56%</b>	<b>3,416</b>	<b>427</b>	<b>2,114</b>	<b>9</b>	<b>7,627</b>	<b>38,593</b>

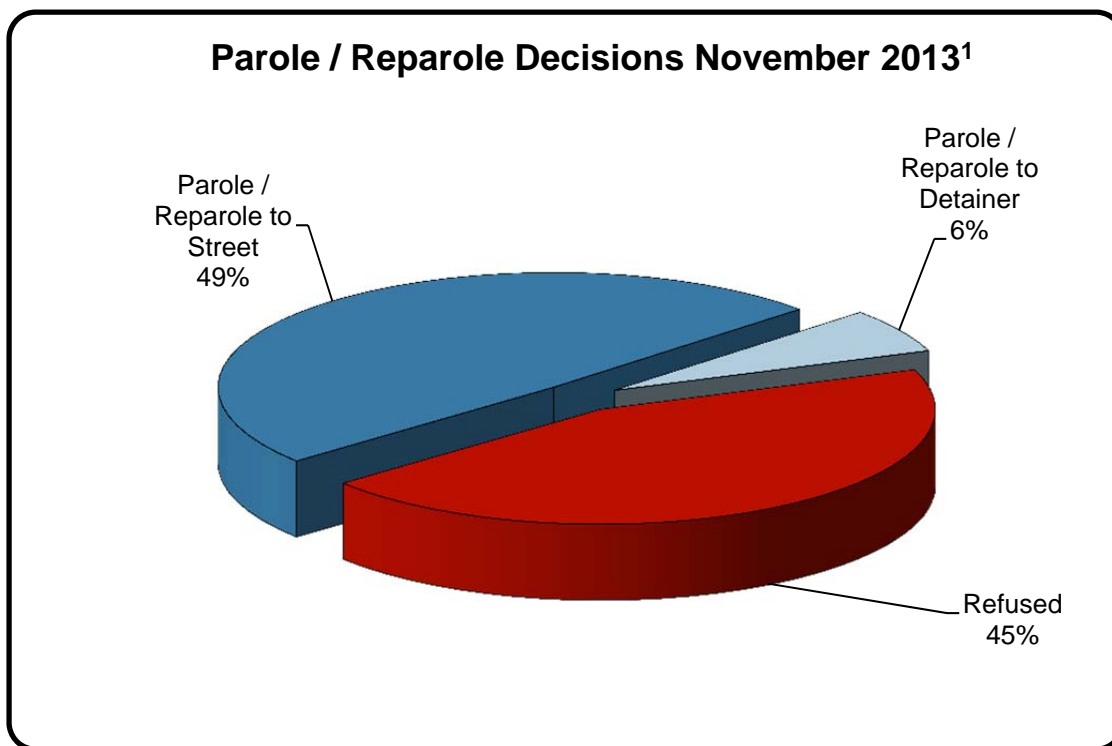
<sup>2</sup> Offender is unable to work due to a physical or mental disability, is a care provider, attends inpatient treatment, etc.

<sup>3</sup> Offender collects income assistance, workman's compensation, monthly pension, Social Security, disability payments, etc.



**Table 7**  
**BOARD DECISIONS**  
**November 2013**

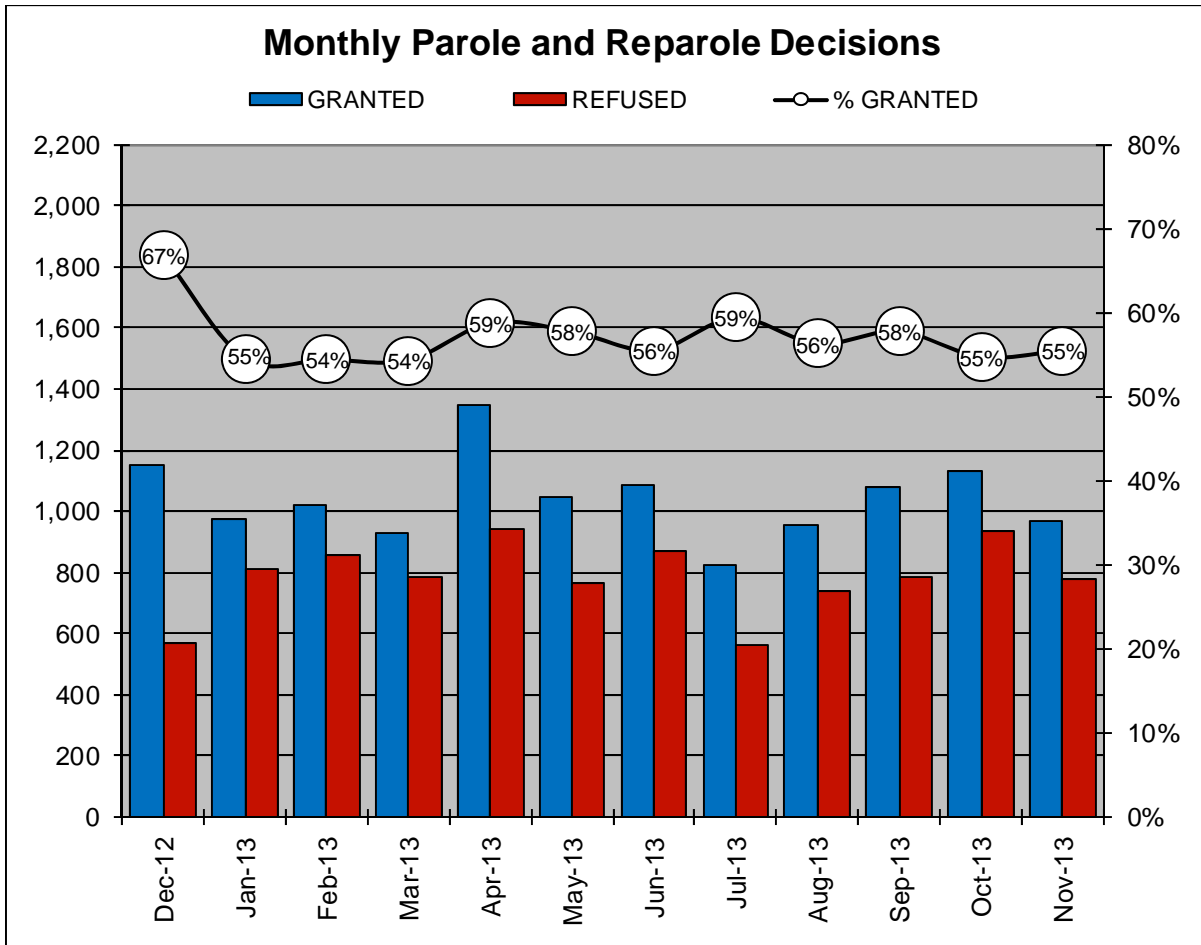
<b>Type of Decision</b>		<b>Total</b>
Parole / Reparole to Street	857	
Parole / Reparole to Detainer	109	
Refused	775	
<b>Total Considered</b>		<b>1,741</b>
<hr/>		
Recommitments as TPV	396	
Recommitments as CPV	157	
Recommitments as CPV and TPV	13	
<b>Total Recommitments</b>		<b>566</b>
Refer to Prior Action		56
Other Decisions		948
<b>Total Decisions</b>		<b>3,311</b>



<sup>1</sup> The 55% does not necessarily reflect the overall grant rate, but rather is the calculated percent of grant decisions for the total number of Board Actions produced during this period of time.

**Table 8**  
**MONTHLY PAROLE and REPAROLE DECISIONS**  
**October 2013**

MONTH-YEAR	GRANTED	REFUSED	CONSIDERED	% GRANTED
Dec-12	1,151	570	1,721	67%
Jan-13	972	810	1,782	55%
Feb-13	1,020	854	1,874	54%
Mar-13	931	782	1,713	54%
Apr-13	1,346	944	2,290	59%
May-13	1,047	766	1,813	58%
Jun-13	1,084	869	1,953	56%
Jul-13	825	564	1,389	59%
Aug-13	954	741	1,695	56%
Sep-13	1,076	786	1,862	58%
Oct-13	1,130	935	2,065	55%
Nov-13	966	775	1,741	55%
<b>Monthly Average Over 12 Months</b>	1,042	783	1,825	58%



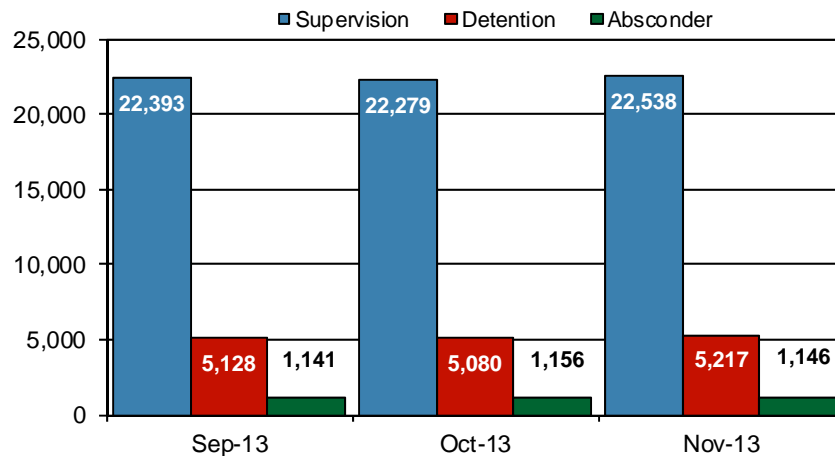


## PBPP Population Breakdown By Place of Incarceration/Jurisdiction – November 2013

Offender Status - November 2013					
Status	State Prison	County Prison	County Sentence	Other States' Cases	Total
Supervision	21,278	1,260	5,718	2,710	30,966
Absconder	1,081	65	165	0	1,311
Detention	4,972	245	953	146	6,316
<b>Total</b>	<b>27,331</b>	<b>1,570</b>	<b>6,836</b>	<b>2,856</b>	<b>38,593</b>

PBPP Monthly Population Profile						
Offender Status	Jun-13	Jul-13	Aug-13	Sep-13	Oct-13	Nov-13
<b>State sentence from state institution</b>	<b>26,648</b>	<b>26,783</b>	<b>26,965</b>	<b>26,998</b>	<b>26,955</b>	<b>27,331</b>
Supervision	20,963	20,964	21,091	21,080	21,040	21,278
Absconder	1,046	1,043	1,037	1,079	1,089	1,081
Detention	4,639	4,776	4,837	4,839	4,826	4,972
<b>State sentence from county prison</b>	<b>1,560</b>	<b>1,617</b>	<b>1,643</b>	<b>1,664</b>	<b>1,560</b>	<b>1,570</b>
Supervision	1,248	1,295	1,320	1,313	1,239	1,260
Absconder	52	54	62	62	67	65
Detention	260	268	261	289	254	245
<b>County sentence Prob &amp; Parole</b>	<b>6,811</b>	<b>6,799</b>	<b>6,747</b>	<b>6,715</b>	<b>6,754</b>	<b>6,836</b>
Supervision	5,656	5,624	5,603	5,624	5,648	5,718
Absconder	174	187	194	170	169	165
Detention	981	988	950	921	937	953
<b>Other states' sentence Prob &amp; Parole</b>	<b>2,952</b>	<b>2,917</b>	<b>2,913</b>	<b>2,910</b>	<b>2,885</b>	<b>2,856</b>
Supervision	2,836	2,804	2,792	2,791	2,747	2,710
Absconder	0	0	0	0	0	0
Detention	116	113	121	119	138	146
<b>PBPP Population end of month</b>	<b>37,971</b>	<b>38,116</b>	<b>38,268</b>	<b>38,287</b>	<b>38,154</b>	<b>38,593</b>

### State Sentence Cases by Offender Status



## PBPP Population Breakdown By Place of Incarceration/Jurisdiction – November 2013

Monthly Count of Grant and Refuse Board Actions							
Type of Decision	County Prison			State Prison			All Grant/Refuse Board Actions
	Grant	Refuse	Total	Grant	Refuse	Total	
December 2012	12	7	19	1,139	563	1,702	1,721
January 2013	17	10	27	955	800	1,755	1,782
February 2013	16	5	21	1,004	849	1,853	1,874
March 2013	12	7	19	919	775	1,694	1,713
April 2013	24	8	32	1,322	936	2,258	2,290
May 2013	18	9	27	1,029	757	1,786	1,813
June 2013	5	7	12	1,079	862	1,941	1,953
July 2013	4	4	8	821	560	1,381	1,389
August 2013	6	2	8	948	739	1,687	1,695
September 2013	8	1	9	1,068	785	1,853	1,862
October 2013	15	5	20	1,115	930	2,045	2,065
November 2013	5	6	11	961	769	1,730	1,741
<b>2013 Total</b>	<b>130</b>	<b>64</b>	<b>194</b>	<b>11,221</b>	<b>8,762</b>	<b>19,983</b>	<b>20,177</b>

Additions and Deletions						
	Jun-13	Jul-13	Aug-13	Sep-13	Oct-13	Nov-13
<b>Total Additions</b>	<b>1,347</b>	<b>1,419</b>	<b>1,422</b>	<b>1,361</b>	<b>1,415</b>	<b>1,451</b>
State sentence - State Prison	933	978	1,021	999	960	1,003
State sentence - County Prison	41	111	82	74	76	70
County sentence Prob & Parole	229	199	187	146	244	258
Other states' sentence	144	131	132	142	135	120
<b>Total Deletions</b>	<b>1,186</b>	<b>1,270</b>	<b>1,263</b>	<b>1,322</b>	<b>1,541</b>	<b>1,010</b>
<b>State sentence - State Prison</b>	<b>689</b>	<b>767</b>	<b>763</b>	<b>834</b>	<b>953</b>	<b>577</b>
<i>Technical Violator</i>	215	224	254	272	310	179
<i>Convicted Violator</i>	145	172	163	168	245	113
<i>Successful Completion</i>	302	332	313	355	357	265
<i>Other Case Closure</i>	27	39	33	39	41	20
<b>State sentence - County Prison</b>	<b>33</b>	<b>45</b>	<b>45</b>	<b>53</b>	<b>67</b>	<b>45</b>
<i>Technical Violator</i>	9	9	7	9	12	11
<i>Convicted Violator</i>	3	9	11	7	16	9
<i>Successful Completion</i>	18	26	23	32	34	22
<i>Other Case Closure</i>	3	1	4	5	5	3
<b>County sentence Prob &amp; Parole</b>	<b>290</b>	<b>294</b>	<b>296</b>	<b>288</b>	<b>360</b>	<b>241</b>
<i>Technical Violator</i>	42	34	37	44	62	34
<i>Convicted Violator</i>	33	28	35	36	38	12
<i>Successful Completion</i>	113	142	143	122	183	126
<i>Other Case Closure</i>	102	90	81	86	77	69
<b>Other states' sentence</b>	<b>174</b>	<b>164</b>	<b>159</b>	<b>147</b>	<b>161</b>	<b>147</b>
<i>Technical Violator</i>	4	2	2	0	4	0
<i>Convicted Violator</i>	1	2	0	1	0	2
<i>Successful Completion</i>	59	53	67	56	55	50
<i>Other Case Closure</i>	110	107	90	90	102	95
<b>PBPP Population end of month</b>	<b>37,971</b>	<b>38,116</b>	<b>38,268</b>	<b>38,287</b>	<b>38,154</b>	<b>38,593</b>