

COMMONWEALTH OF PENNSYLVANIA

Board of Probation and Parole

MONTHLY PROGRAM REPORT

April 2014



Tom Corbett
Governor

Michael C. Potteiger
Chairman

Edward L. Burke
Member

Randy P. Feathers
Member

Michael L. Green
Member

Leslie M. Grey
Member

Jeffrey R. Imboden
Member

Craig R. McKay
Member

John R. Tuttle
Member

Lloyd A. White
Member

Jennifer Storm
Victim Advocate

PBPP
AN EQUAL OPPORTUNITY EMPLOYER

Published May 15, 2014 by the PBPP Statistical Reporting and Evidence-Based Program Evaluation Office

Copyright © 2014 Commonwealth of Pennsylvania, Board of Probation and Parole. All rights reserved.

Table 1
WORKLOAD AND POPULATION CHANGES BY REGION / DISTRICT
April 2014

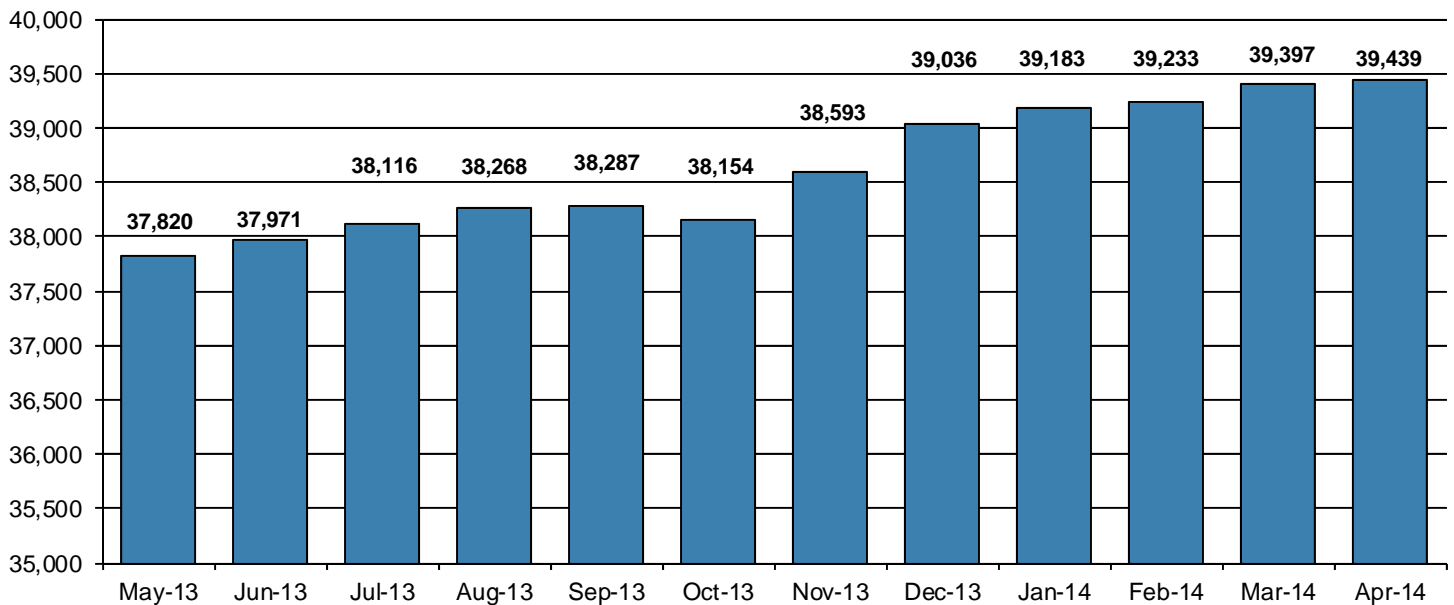
REGION / DISTRICT	Beginning Fiscal Yr ¹ July 2013	Current Month Population	Fiscal YTD Index	Additions	Deletions		Number of Agents ²	Average Workload ³
					Recommits/ Revocations	Other Deletions		
CHESTER	3,154	3,112	99	97	47	91	40	134
PHILADELPHIA	10,676	11,146	104	411	129	214	136	146
EASTERN REGION	13,830	14,258	103	508	176	305	176	143
ALLENTOWN	4,466	4,827	108	259	116	113	61	159
HARRISBURG	5,328	5,501	103	209	133	102	70	161
SCRANTON	1,961	1,889	96	65	38	48	30	132
WILLIAMSPORT	1,104	1,179	107	42	12	17	16	143
CENTRAL REGION	12,859	13,396	104	575	299	280	177	154
ALTOONA	1,502	1,605	107	63	20	31	23	155
MERCER	3,151	3,265	104	130	60	136	43	169
ERIE	1,762	1,822	103	70	20	25	25	155
PITTSBURGH	4,867	5,093	105	204	78	75	72	150
WESTERN REGION	11,282	11,785	104	467	178	267	163	156
TOTAL Supervised	37,971	39,439	104	1,550	653	852	516	151

¹ effective June 30² Filled agent positions

PA Offenders in Other States	3,189	3,183	100	58	13	61
------------------------------	--------------	--------------	------------	-----------	-----------	-----------

³ Workload is a measure of the expected hours per month an agent's caseload and other duties require. An agent's available hours is 131.75.

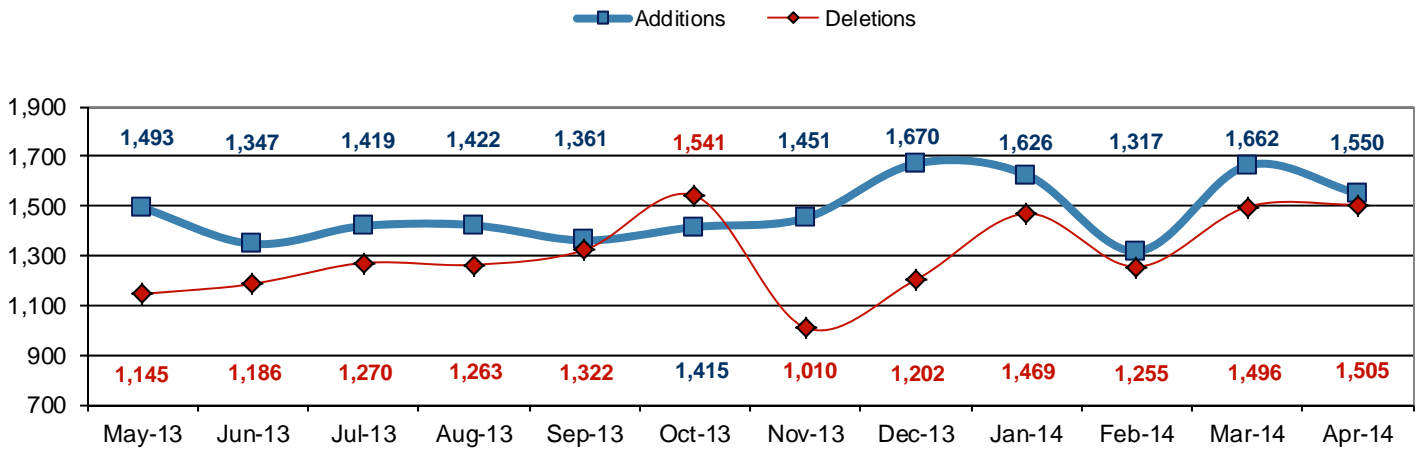
Population - Retrospective Year View



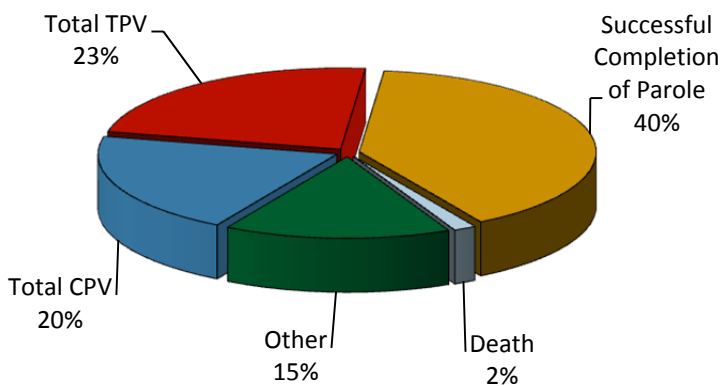
**Table 2
SUPERVISED POPULATION ADDITIONS AND DELETIONS
April 2014**

Population Additions and Deletions	Parole	Reparole	Special County Probation	Special County Parole	Other States' Probation	Other States' Parole	Monthly Total	Fiscal YTD Total
ADDITIONS	884	333	133	58	118	24	1,550	14,893
DELETIONS-RECOMMITMENTS								
<i>Convicted Parole Violator</i>								
State Corrections	188	61	1	0	0	0	250	1,933
County Corrections	9	1	31	7	0	0	48	376
Other States	0	0	0	0	5	1	6	21
<i>Total Convicted Parole Violator</i>	197	62	32	7	5	1	304	2,330
<i>Technical Parole Violator</i>								
State Corrections	199	79	1	0	0	0	279	2,661
County Corrections	5	9	39	12	0	0	65	521
Other States	0	0	0	0	3	2	5	17
<i>Total Technical Parole Violator</i>	204	88	40	12	3	2	349	3,199
TOTAL RECOMMITMENTS	401	150	72	19	8	3	653	5,529
Deletion Successful Completion	298	73	124	42	51	12	600	5,650
Deletion Death	10	8	1	2	0	0	21	242
Deletion Other	19	4	103	7	86	12	231	1,912
TOTAL DELETIONS	728	235	300	70	145	27	1,505	13,333

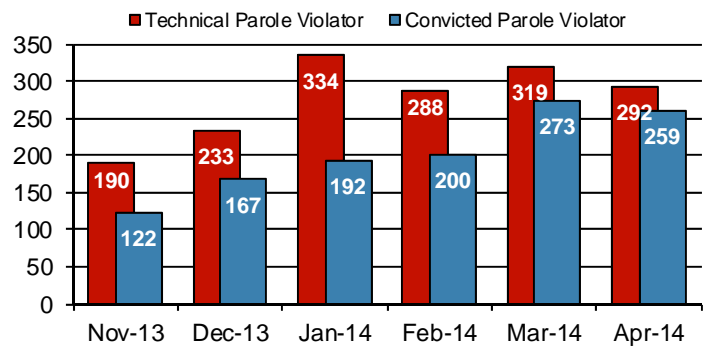
Population Additions & Deletions-Retrospective Year View



Total Deletions April 2014



State Sentence Parole Revocations*



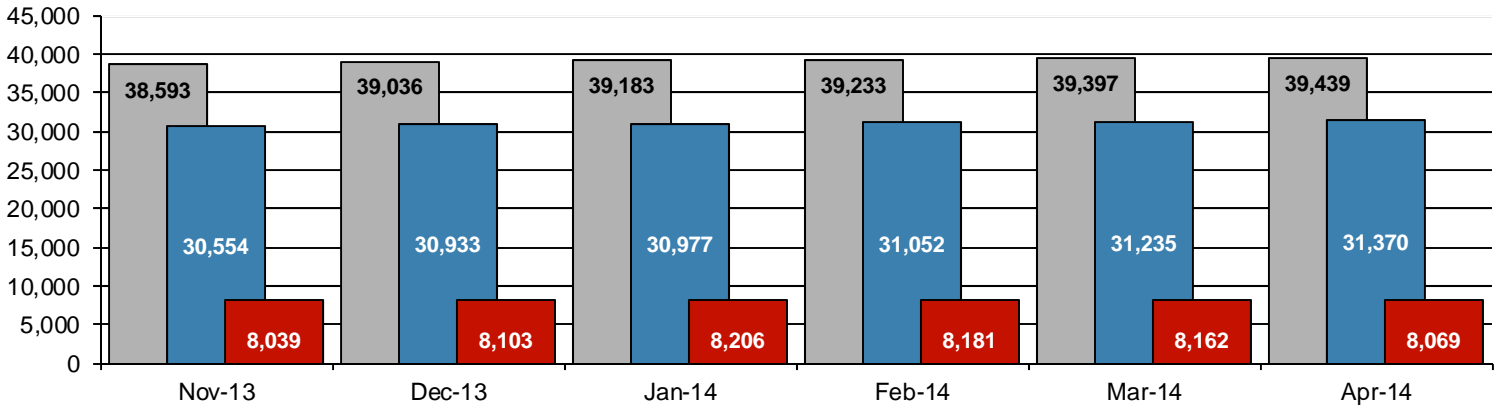
* These revocations represent field case closure records and are dependent on case processing.

Table 3
SUPERVISED POPULATION BY ORIGINATING JURISDICTION and REGION / DISTRICT
April 2014

Region / District	PA Parole State Sentence				County		Other States		Total Population
	State Prisons	Boot Camp	County Prisons	Subtotal	Special Probation	Special Parole	Probation	Parole	
Chester	1,980	42	109	2,131	649	24	260	48	3,112
Philadelphia	8,650	207	233	9,090	1,345	6	556	149	11,146
Eastern Region	10,630	249	342	11,221	1,994	30	816	197	14,258
Allentown	3,407	120	360	3,887	468	1	391	80	4,827
Harrisburg	4,406	205	231	4,842	307	3	279	70	5,501
Scranton	1,323	10	156	1,489	159	1	178	62	1,889
Williamsport	808	12	65	885	151	10	111	22	1,179
Central Region	9,944	347	812	11,103	1,085	15	959	234	13,396
Altoona	1,040	34	92	1,166	273	59	84	23	1,605
Mercer	780	19	49	848	1,347	946	106	18	3,265
Erie	1,241	61	180	1,482	207	49	64	20	1,822
Pittsburgh	3,422	221	193	3,836	893	49	241	74	5,093
Western Region	6,483	335	514	7,332	2,720	1,103	495	135	11,785
Total	27,057	931	1,668	29,656	5,799	1,148	2,270	566	39,439
Percent of Total	69%	2%	4%	74%	15%	3%	6%	2%	100%

Parole and Probation Supervised Populations

■ Total Population
 ■ Parole
 ■ Probation



Supervised State Sentence Cases

■ Total State Sentence Cases
 ■ State Prison Cases
 ■ County Prison Cases
 ■ Boot Camp Cases

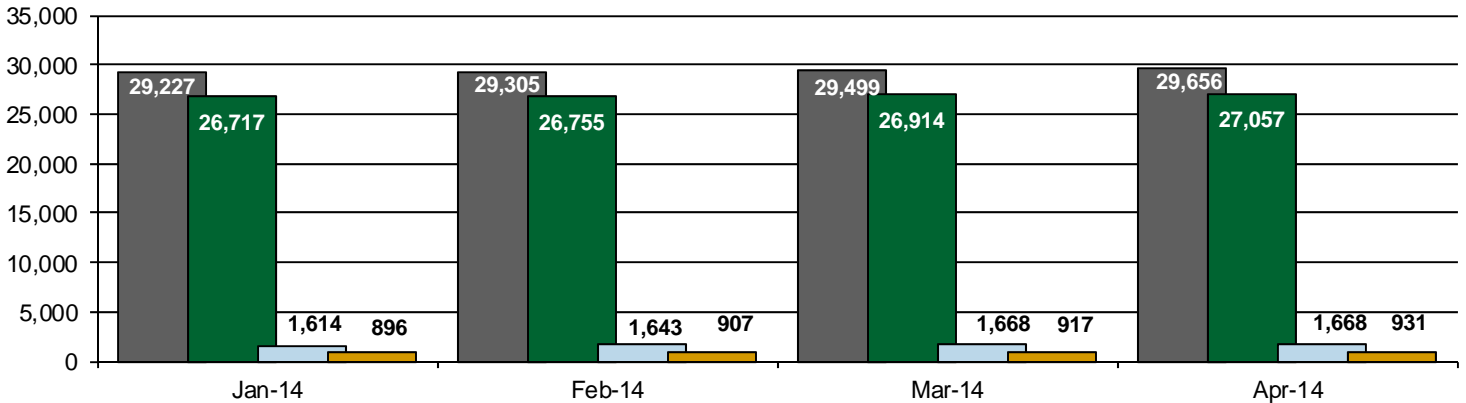
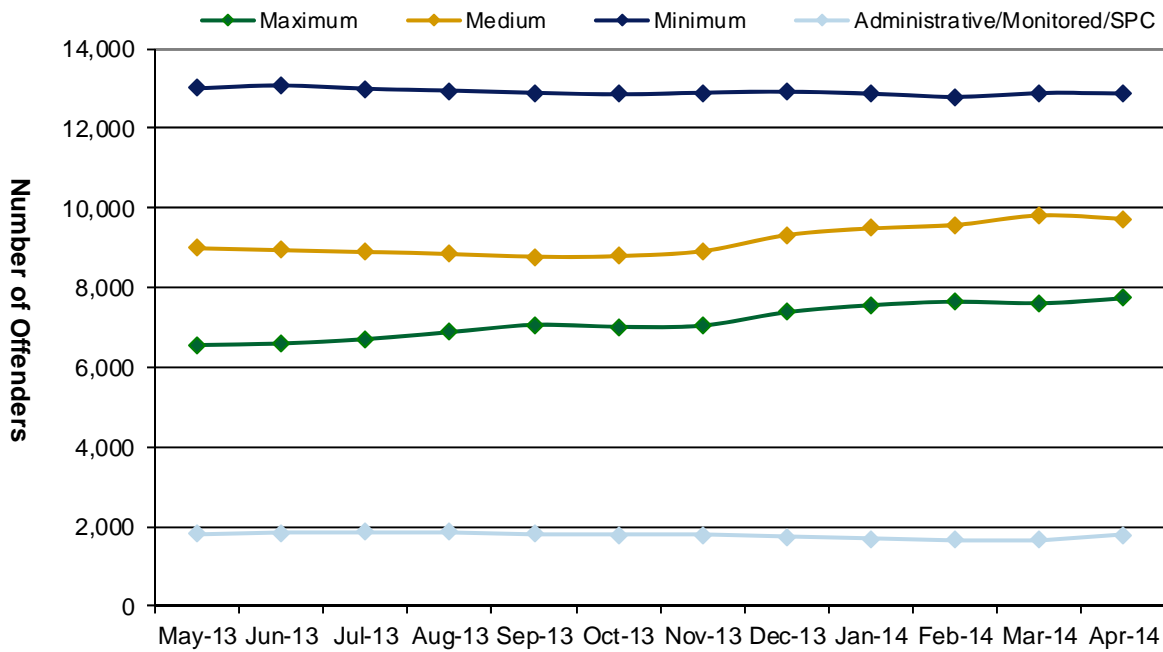


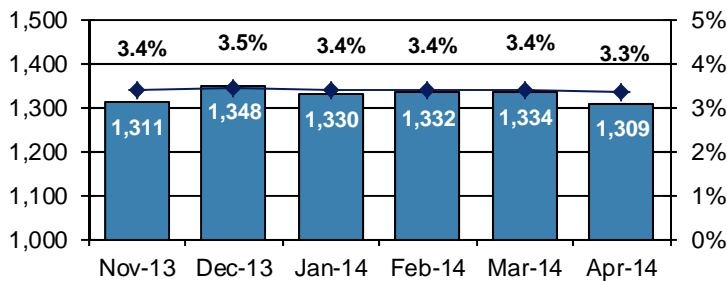
Table 4
SUPERVISED POPULATION BY GRADE OF SUPERVISION and REGION / DISTRICT
April 2014

Region / District	Reporting							Non-Reporting		Total Population
	Enhanced	Maximum	Medium	Minimum	ADM/MON /SPC	Not Classified	Subtotal	Absconder	Detainees	
Chester	6	257	744	1,380	269	7	2,663	59	390	3,112
Philadelphia	12	1,998	2,344	3,897	384	53	8,688	455	2,003	11,146
Eastern Region	18	2,255	3,088	5,277	653	60	11,351	514	2,393	14,258
Allentown	26	1,214	1,198	1,440	166	15	4,059	186	582	4,827
Harrisburg	35	1,264	1,294	1,561	272	11	4,437	218	846	5,501
Scranton	12	291	510	634	133	6	1,586	60	243	1,889
Williamsport	2	145	324	389	150	1	1,011	20	148	1,179
Central Region	75	2,914	3,326	4,024	721	33	11,093	484	1,819	13,396
Altoona	3	347	459	486	53	3	1,351	13	241	1,605
Mercer	4	401	970	1,304	197	1	2,877	52	336	3,265
Erie	4	491	467	509	113	1	1,585	37	200	1,822
Pittsburgh	14	1,318	1,414	1,274	41	16	4,077	209	807	5,093
Western Region	25	2,557	3,310	3,573	404	21	9,890	311	1,584	11,785
Total	118	7,726	9,724	12,874	1,778	114	32,334	1,309	5,796	39,439
Percent of Total	<1%	20%	25%	33%	5%	1%	82%	3%	15%	100%

PBPP Active Cases By Supervision Level



Number of Absconders and % of Population



Number of Detainees and % of Population

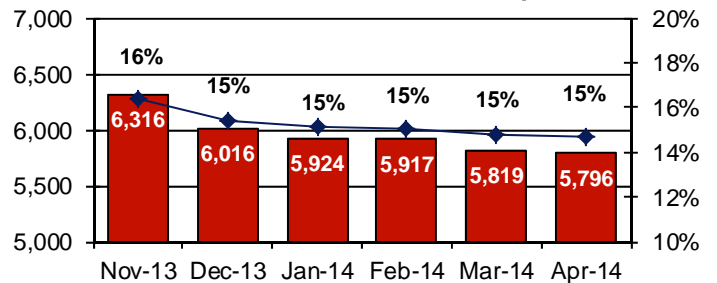


Table 5
SUPERVISED POPULATION BY GENDER, RACE and REGION / DISTRICT
April 2014

Region / District	Male					Female					% Male	Total Population
	White	Black	Hispanic	Other ¹	Total	White	Black	Hispanic	Other ¹	Total		
Chester	1,306	1,356	129	38	2,829	194	76	6	7	283	91%	3,112
Philadelphia	1,461	7,411	1,379	145	10,396	236	440	65	9	750	93%	11,146
EASTERN REGION	2,767	8,767	1,508	183	13,225	430	516	71	16	1,033	93%	14,258
Allentown	2,114	1,082	1,120	35	4,351	333	84	53	6	476	90%	4,827
Harrisburg	2,482	1,776	635	39	4,932	409	105	50	5	569	90%	5,501
Scranton	1,183	350	105	10	1,648	206	22	10	3	241	87%	1,889
Williamsport	814	102	18	4	938	215	17	7	2	241	80%	1,179
CENTRAL REGION	6,593	3,310	1,878	88	11,869	1,163	228	120	16	1,527	89%	13,396
Altoona	1,172	139	8	7	1,326	264	15	0	0	279	83%	1,605
Mercer	2,083	375	15	6	2,479	691	86	4	5	786	76%	3,265
Erie	1,105	401	60	13	1,579	198	38	5	2	243	87%	1,822
Pittsburgh	2,173	2,305	48	21	4,547	383	153	3	7	546	89%	5,093
WESTERN REGION	6,533	3,220	131	47	9,931	1,536	292	12	14	1,854	84%	11,785
TOTAL	15,893	15,297	3,517	318	35,025	3,129	1,036	203	46	4,414	89%	39,439

¹ "Other" includes Asian, Pacific Islander, Native American, Native Alaskan, and cases not elsewhere classified.

Table 6
SUPERVISED POPULATION BY EMPLOYMENT STATUS and REGION / DISTRICT
April 2014

Region / District	In Labor Force				Not In Labor Force					Total Population
	Employed Part Time	Employed Full Time	Unemployed	Employment Rate	Unable to Work ²	Student	Unearned Income ³	Unknown	Non-Reporting	
Chester	164	1,177	901	60%	313	26	82	0	449	3,112
Philadelphia	702	2,332	4,241	42%	875	151	384	3	2,458	11,146
EASTERN REGION	866	3,509	5,142	46%	1,188	177	466	3	2,907	14,258
Allentown	280	1,629	1,029	65%	763	46	312	0	768	4,827
Harrisburg	222	1,734	1,992	50%	297	27	165	0	1,064	5,501
Scranton	49	865	360	72%	118	13	181	0	303	1,889
Williamsport	95	525	158	80%	126	14	93	0	168	1,179
CENTRAL REGION	646	4,753	3,539	60%	1,304	100	751	0	2,303	13,396
Altoona	133	403	551	49%	112	13	139	0	254	1,605
Mercer	286	935	918	57%	359	42	335	2	388	3,265
Erie	127	536	561	54%	178	19	162	2	237	1,822
Pittsburgh	278	1,426	1,282	57%	819	54	218	0	1,016	5,093
WESTERN REGION	824	3,300	3,312	55%	1,468	128	854	4	1,895	11,785
TOTAL	2,336	11,562	11,993	54%	3,960	405	2,071	7	7,105	39,439

² Offender is unable to work due to a physical or mental disability, is a care provider, attends inpatient treatment, etc.

³ Offender collects income assistance, workman's compensation, monthly pension, Social Security, disability payments, etc.

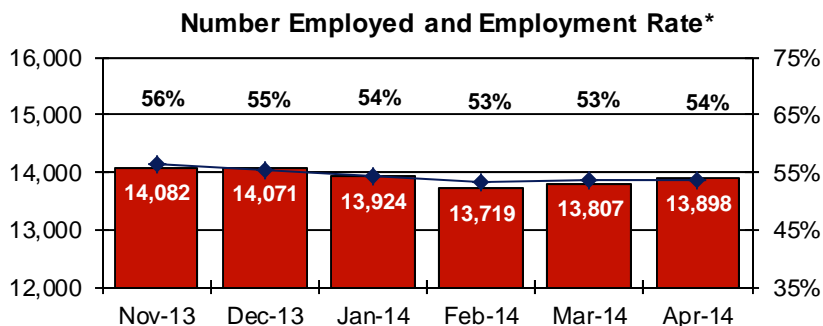
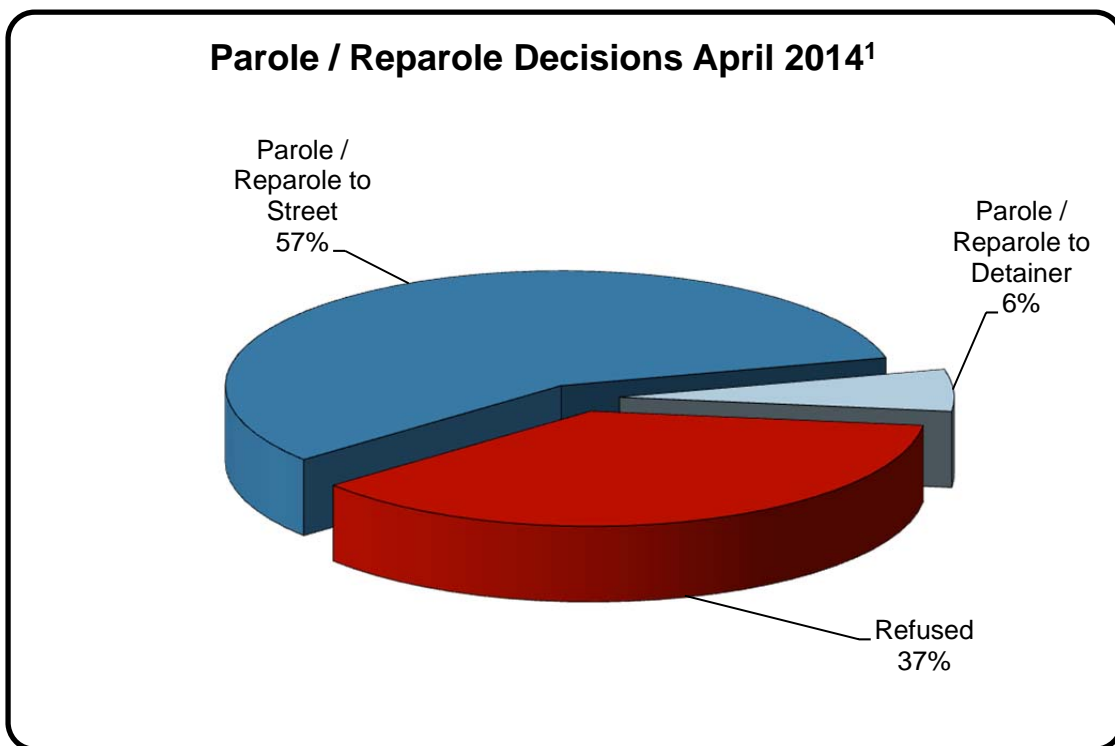


Table 7
BOARD DECISIONS
April 2014

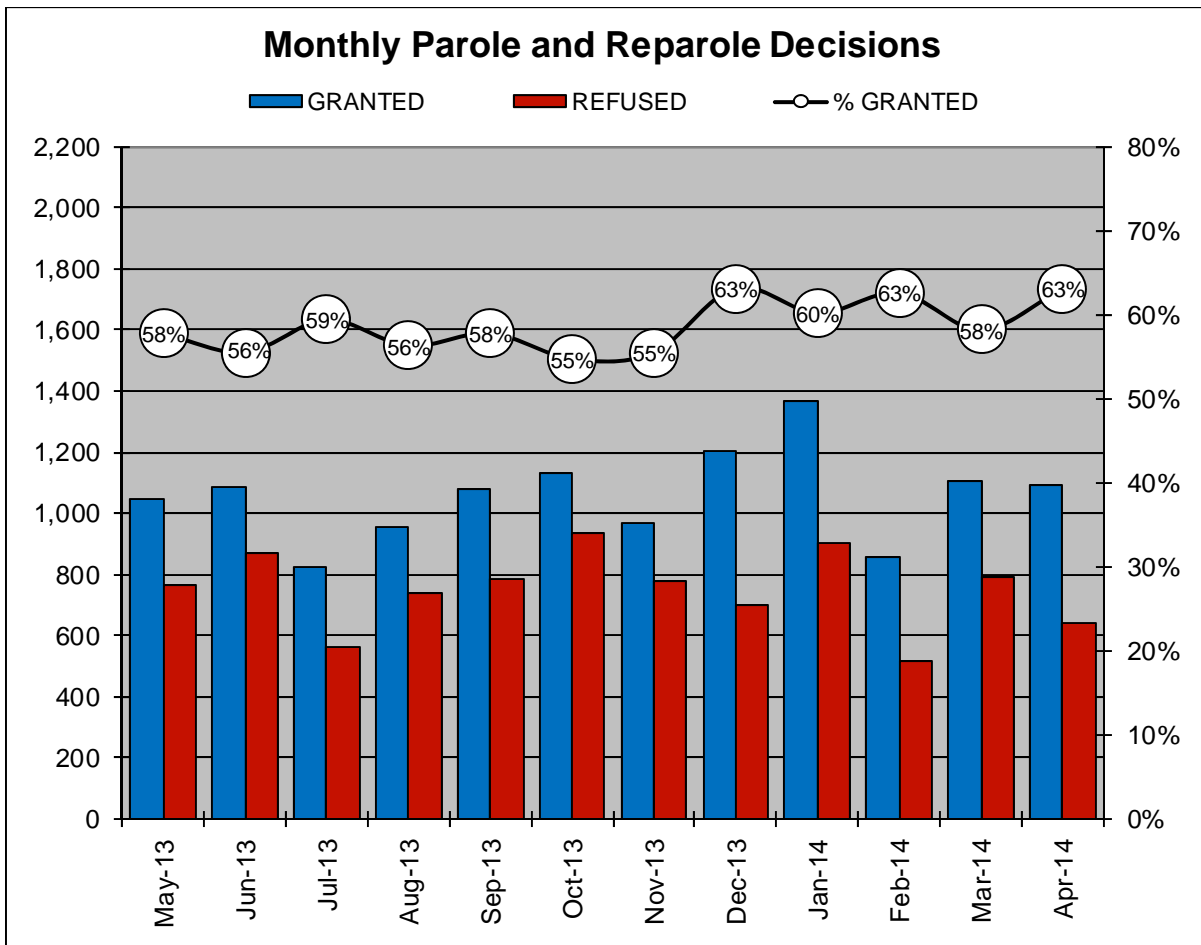
Type of Decision		Total
Parole / Reparole to Street	992	
Parole / Reparole to Detainer	102	
Refused	640	
Total Considered		1,734
<hr/>		
Recommitments as TPV	477	
Recommitments as CPV	231	
Recommitments as CPV and TPV	21	
Total Recommitments		729
Refer to Prior Action		88
Other Decisions		1,096
Total Decisions		3,647



¹ The 63% does not necessarily reflect the overall grant rate, but rather is the calculated percent of grant decisions for the total number of Board Actions produced during this period of time.

Table 8
MONTHLY PAROLE and REPAROLE DECISIONS
April 2014

MONTH-YEAR	GRANTED	REFUSED	CONSIDERED	% GRANTED
May-13	1,047	766	1,813	58%
Jun-13	1,084	869	1,953	56%
Jul-13	825	564	1,389	59%
Aug-13	954	741	1,695	56%
Sep-13	1,076	786	1,862	58%
Oct-13	1,130	935	2,065	55%
Nov-13	966	775	1,741	55%
Dec-13	1,202	701	1,903	63%
Jan-14	1,367	905	2,272	60%
Feb-14	859	513	1,372	63%
Mar-14	1,102	792	1,894	58%
Apr-14	1,094	640	1,734	63%
Monthly Average Over 12 Months	1,059	749	1,808	58%

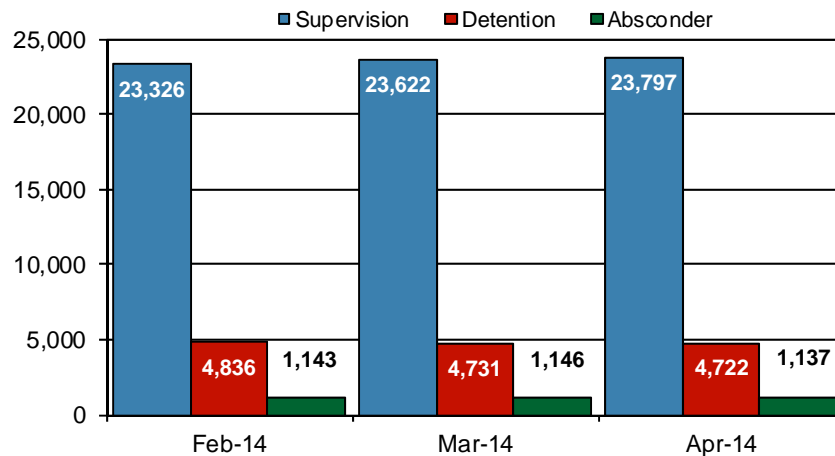


PBPP Population Breakdown By Place of Incarceration/Jurisdiction – April 2014

Offender Status - April 2014					
Status	State Prison	County Prison	County Sentence	Other States' Cases	Total
Supervision	22,470	1,327	5,826	2,711	32,334
Absconder	1,061	76	172	0	1,309
Detention	4,457	265	949	125	5,796
Total	27,988	1,668	6,947	2,836	39,439

PBPP Monthly Population Profile						
Offender Status	Nov-13	Dec-13	Jan-14	Feb-14	Mar-14	Apr-14
State sentence from state institution	27,331	27,613	27,613	27,662	27,831	27,988
Supervision	21,278	21,798	21,907	22,015	22,285	22,470
Absconder	1,081	1,105	1,085	1,070	1,072	1,061
Detention	4,972	4,710	4,621	4,577	4,474	4,457
State sentence from county prison	1,570	1,596	1,614	1,643	1,668	1,668
Supervision	1,260	1,290	1,299	1,311	1,337	1,327
Absconder	65	69	73	73	74	76
Detention	245	237	242	259	257	265
County sentence Prob & Parole	6,836	6,926	7,021	7,025	7,034	6,947
Supervision	5,718	5,814	5,919	5,896	5,898	5,826
Absconder	165	174	172	189	188	172
Detention	953	938	930	940	948	949
Other states' sentence Prob & Parole	2,856	2,901	2,935	2,903	2,864	2,836
Supervision	2,710	2,770	2,804	2,762	2,724	2,711
Absconder	0	0	0	0	0	0
Detention	146	131	131	141	140	125
PBPP Population end of month	38,593	39,036	39,183	39,233	39,397	39,439

State Sentence Cases by Offender Status



PBPP Population Breakdown By Place of Incarceration/Jurisdiction – April 2014

Monthly Count of Grant and Refuse Board Actions							
Type of Decision	County Prison			State Prison			All Grant/Refuse Board Actions
	Grant	Refuse	Total	Grant	Refuse	Total	
May 2013	18	9	27	1,029	757	1,786	1,813
June 2013	5	7	12	1,079	862	1,941	1,953
July 2013	4	4	8	821	560	1,381	1,389
August 2013	6	2	8	948	739	1,687	1,695
September 2013	8	1	9	1,068	785	1,853	1,862
October 2013	15	5	20	1,115	930	2,045	2,065
November 2013	5	6	11	961	769	1,730	1,741
December 2013	13	7	20	1,189	694	1,883	1,903
January 2014	5	5	10	1,362	900	2,262	2,272
February 2014	11	1	12	848	512	1,360	1,372
March 2014	6	4	10	1,096	788	1,884	1,894
April 2014	9	1	10	1,085	639	1,724	1,734
2014 Total	31	11	42	4,391	2,839	7,230	7,272

Additions and Deletions						
	Nov-13	Dec-13	Jan-14	Feb-14	Mar-14	Apr-14
Total Additions	1,451	1,670	1,626	1,317	1,662	1,550
State sentence - State Prison	1,003	1,125	1,122	955	1,217	1,145
State sentence - County Prison	70	77	95	81	87	72
County sentence Prob & Parole	258	304	257	169	215	191
Other states' sentence	120	164	152	112	143	142
Total Deletions	1,010	1,202	1,469	1,255	1,496	1,505
State sentence - State Prison	577	708	984	819	954	914
<i>Technical Violator</i>	179	225	320	271	299	278
<i>Convicted Violator</i>	113	158	186	193	265	249
<i>Successful Completion</i>	265	292	425	323	353	347
<i>Other Case Closure</i>	20	33	53	32	37	40
State sentence - County Prison	45	53	57	51	64	49
<i>Technical Violator</i>	11	8	14	17	20	14
<i>Convicted Violator</i>	9	9	6	7	8	10
<i>Successful Completion</i>	22	35	31	25	32	24
<i>Other Case Closure</i>	3	1	6	2	4	1
County sentence Prob & Parole	241	322	305	240	293	370
<i>Technical Violator</i>	34	43	44	39	41	52
<i>Convicted Violator</i>	12	27	29	26	34	39
<i>Successful Completion</i>	126	168	144	115	129	166
<i>Other Case Closure</i>	69	84	88	60	89	113
Other states' sentence	147	119	123	145	185	172
<i>Technical Violator</i>	0	1	1	1	0	5
<i>Convicted Violator</i>	2	2	3	1	5	6
<i>Successful Completion</i>	50	52	50	60	60	63
<i>Other Case Closure</i>	95	64	69	83	120	98
PBPP Population end of month	38,593	39,036	39,183	39,233	39,397	39,439