

COMMONWEALTH OF PENNSYLVANIA

Board of Probation and Parole

MONTHLY PROGRAM REPORT

July 2012



Tom Corbett
Governor

Michael C. Potteiger
Chairman

C. James Fox
Member

Jeffrey R. Imboden
Member

Craig R. McKay
Member

Judith E. Viglione
Member

Michael L. Green
Member

Matthew T. Mangino, Esq
Member

John R. Tuttle
Member

Lloyd A. White
Member

Carol Lavery
Victim Advocate

PBPP
AN EQUAL OPPORTUNITY EMPLOYER

Published August 16, 2012 by the PBPP Statistical Reporting and Evidence-Based Program Evaluation Office

Copyright © 2012 Commonwealth of Pennsylvania, Board of Probation and Parole. All rights reserved.

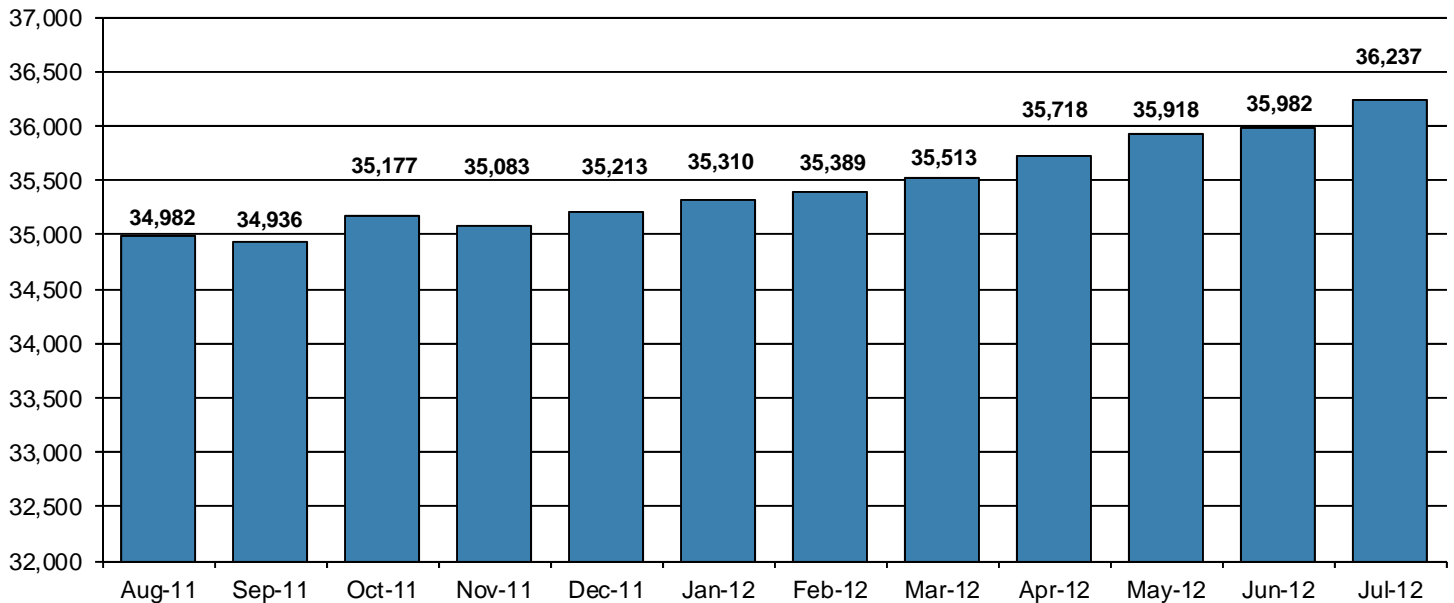
Table 1
WORKLOAD AND POPULATION CHANGES BY REGION / DISTRICT
July 2012

REGION / DISTRICT	Beginning Fiscal Yr ¹ July 2012	Current Month Population	Fiscal YTD Index	Additions	Deletions		Number of Agents ²	Average Workload	Total Workload
					Recommits/ Revocations	Other Deletions			
CHESTER	2,967	2,960	100	79	33	76	37	131	4,860
PHILADELPHIA	9,927	9,964	100	332	108	163	125	126	15,780
EASTERN REGION	12,894	12,924	100	411	141	239	162	127	20,641
ALLENTOWN	4,101	4,140	101	178	77	72	51	143	7,273
HARRISBURG	4,993	5,013	100	193	95	86	62	142	8,822
SCRANTON	1,907	1,946	102	93	25	35	31	116	3,610
WILLIAMSPORT	1,025	1,018	99	35	16	28	13	149	1,936
CENTRAL REGION	12,026	12,117	101	499	213	221	157	138	21,641
ALTOONA	1,453	1,477	102	51	14	28	24	121	2,896
MERCER	3,298	3,299	100	139	27	110	43	140	6,023
ERIE	1,669	1,697	102	58	12	14	24	129	3,086
PITTSBURGH	4,642	4,723	102	234	53	60	69	129	8,897
WESTERN REGION	11,062	11,196	101	482	106	212	160	131	20,902
TOTAL Supervised	35,982	36,237	101	1,392	460	672	479	132	63,184

¹ effective June 30² Filled agent positions

PA Offenders in Other States	3,077	3,077	100	65	10	60
------------------------------	--------------	--------------	------------	-----------	-----------	-----------

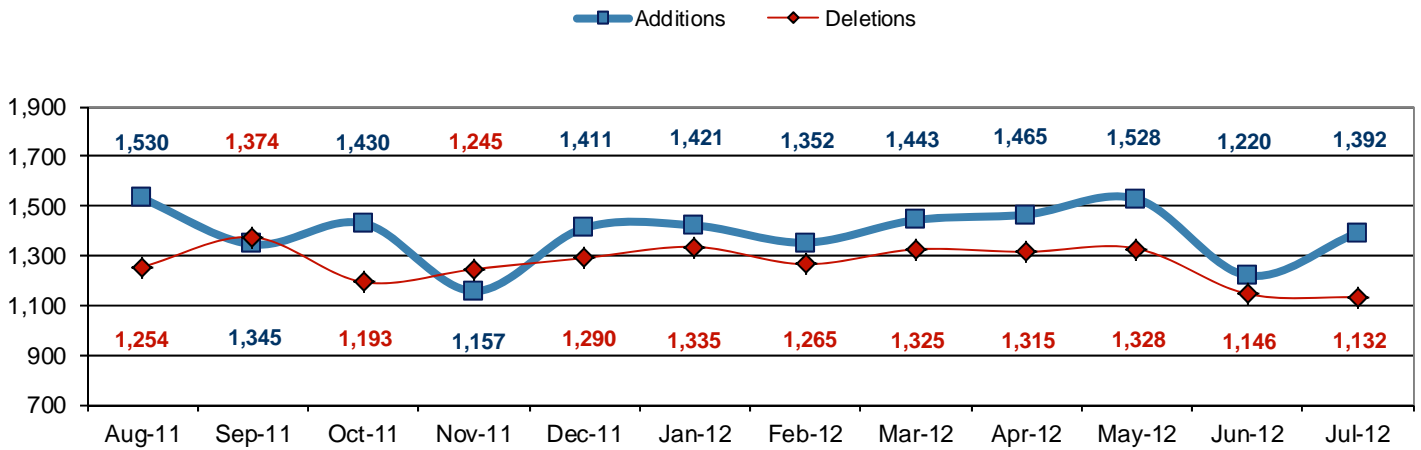
Population - Retrospective Year View



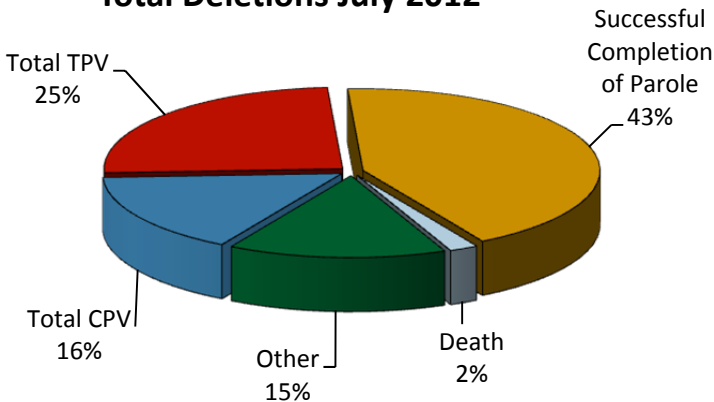
**Table 2
SUPERVISED POPULATION ADDITIONS AND DELETIONS
July 2012**

Population Additions and Deletions	Parole	Reparole	Special County Probation	Special County Parole	Other States' Probation	Other States' Parole	Monthly Total	Fiscal YTD Total
ADDITIONS	840	210	147	60	105	30	1,392	1,392
DELETIONS-RECOMMITMENTS								
<i>Convicted Parole Violator</i>								
State Corrections	117	34	0	0	0	0	151	151
County Corrections	10	0	13	4	0	0	27	27
Other States	0	0	0	0	2	0	2	2
<i>Total Convicted Parole Violator</i>	127	34	13	4	2	0	180	180
<i>Technical Parole Violator</i>								
State Corrections	182	53	4	0	0	0	239	239
County Corrections	11	2	22	5	0	0	40	40
Other States	0	0	0	0	1	0	1	1
<i>Total Technical Parole Violator</i>	193	55	26	5	1	0	280	280
TOTAL RECOMMITMENTS	320	89	39	9	3	0	460	460
Deletion Successful Completion	239	48	102	29	58	7	483	483
Deletion Death	9	6	4	2	1	0	22	22
Deletion Other	12	5	64	7	66	13	167	167
TOTAL DELETIONS	580	148	209	47	128	20	1,132	1,132

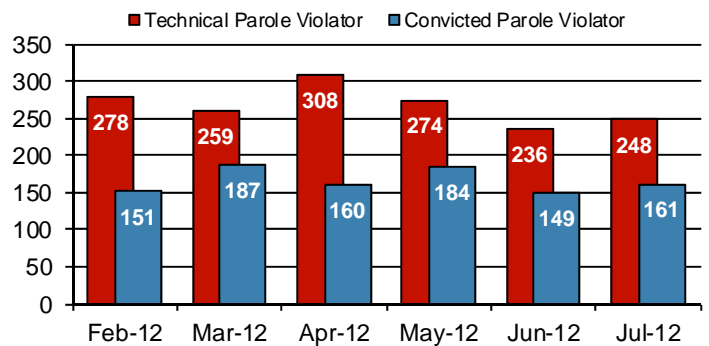
Population Additions & Deletions-Retrospective Year View



Total Deletions July 2012



State Sentence Parole Revocations*

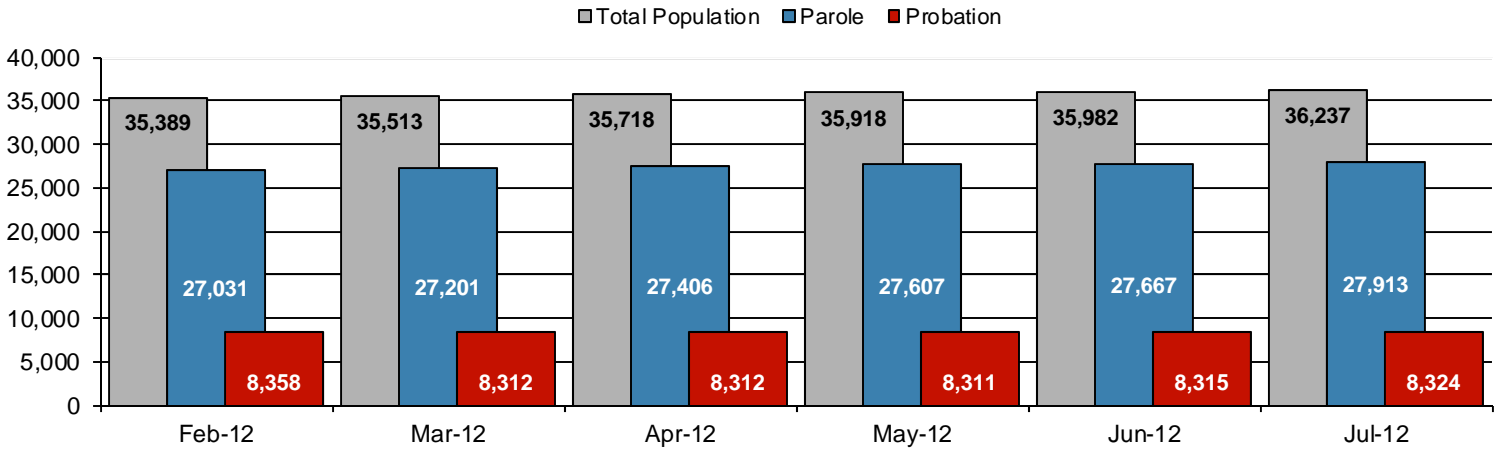


* These revocations represent field case closure records and are dependent on case processing.

**Table 3
SUPERVISED POPULATION BY ORIGINATING JURISDICTION and REGION / DISTRICT
July 2012**

Region / District	PA Parole State Sentence				County		Other States		Total Population
	State Prisons	Boot Camp	County Prisons	Subtotal	Special Probation	Special Parole	Probation	Parole	
Chester	1,718	43	197	1,958	629	18	307	48	2,960
Philadelphia	7,432	145	346	7,923	1,279	12	594	156	9,964
Eastern Region	9,150	188	543	9,881	1,908	30	901	204	12,924
Allentown	2,746	119	339	3,204	460	4	373	99	4,140
Harrisburg	3,898	198	173	4,269	375	4	297	68	5,013
Scranton	1,226	6	192	1,424	210	1	224	87	1,946
Williamsport	717	13	37	767	128	9	90	24	1,018
Central Region	8,587	336	741	9,664	1,173	18	984	278	12,117
Altoona	913	19	62	994	311	68	78	26	1,477
Mercer	735	17	43	795	1,452	928	98	26	3,299
Erie	1,118	45	197	1,360	196	53	71	17	1,697
Pittsburgh	3,148	201	90	3,439	892	57	260	75	4,723
Western Region	5,914	282	392	6,588	2,851	1,106	507	144	11,196
Total	23,651	806	1,676	26,133	5,932	1,154	2,392	626	36,237
Percent of Total	65%	2%	5%	72%	16%	3%	7%	2%	100%

Parole and Probation Supervised Populations



Supervised State Sentence Cases

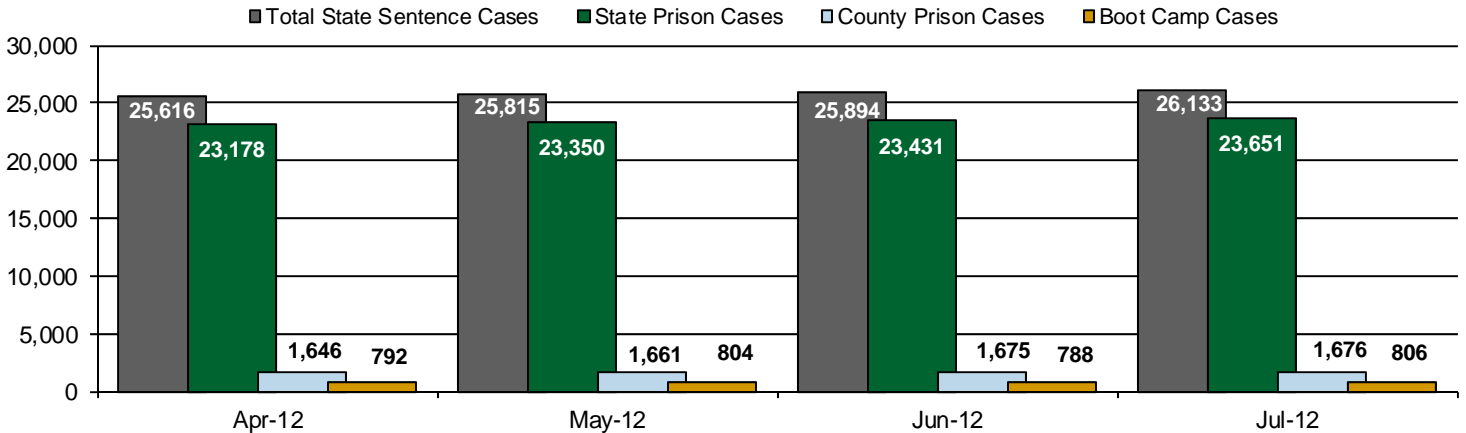
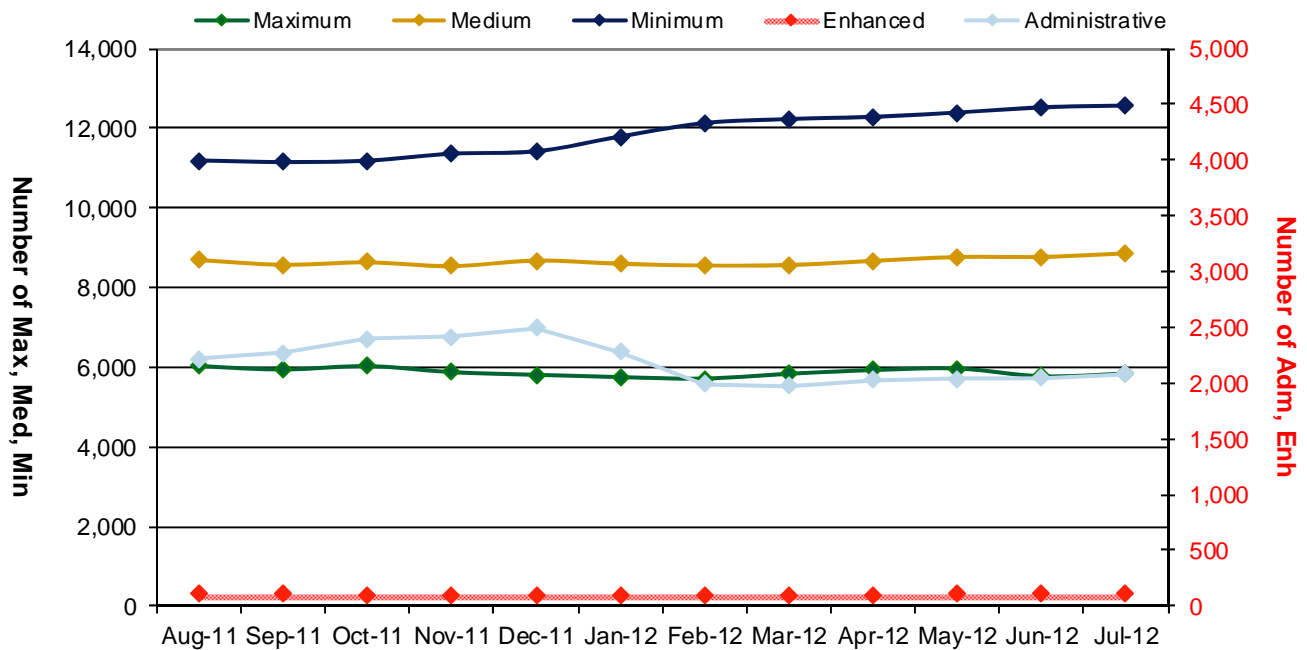


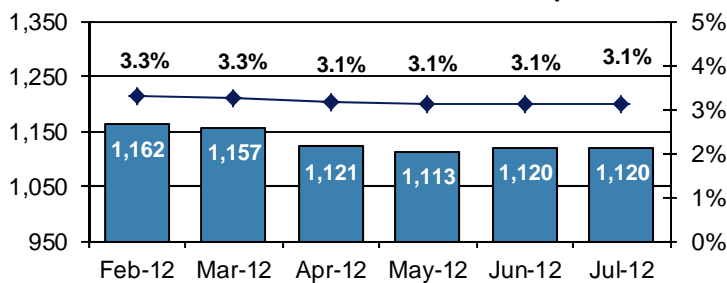
Table 4
SUPERVISED POPULATION BY GRADE OF SUPERVISION and REGION / DISTRICT
July 2012

Region / District	Reporting							Non-Reporting		Total Population
	Enhanced	Maximum	Medium	Minimum	ADM / SPC	Not Classified	Subtotal	Absconder	Detainees	
Chester	3	251	706	1,228	291	15	2,494	54	412	2,960
Philadelphia	2	1,394	2,111	3,823	389	28	7,747	413	1,804	9,964
Eastern Region	5	1,645	2,817	5,051	680	43	10,241	467	2,216	12,924
Allentown	12	779	974	1,492	134	14	3,405	166	569	4,140
Harrisburg	21	915	1,130	1,526	380	16	3,988	183	842	5,013
Scranton	14	301	461	701	137	2	1,616	40	290	1,946
Williamsport	0	113	281	367	112	2	875	17	126	1,018
Central Region	47	2,108	2,846	4,086	763	34	9,884	406	1,827	12,117
Altoona	4	283	427	472	84	1	1,271	22	184	1,477
Mercer	2	252	941	1,377	322	3	2,897	52	350	3,299
Erie	6	330	433	553	152	3	1,477	40	180	1,697
Pittsburgh	49	1,217	1,393	1,028	77	5	3,769	133	821	4,723
Western Region	61	2,082	3,194	3,430	635	12	9,414	247	1,535	11,196
Total	113	5,835	8,857	12,567	2,078	89	29,539	1,120	5,578	36,237
Percent of Total	<1%	16%	24%	35%	6%	<1%	82%	3%	15%	100%

PBPP Active Cases By Supervision Level



Number of Absconders and % of Population



Number of Detainees and % of Population

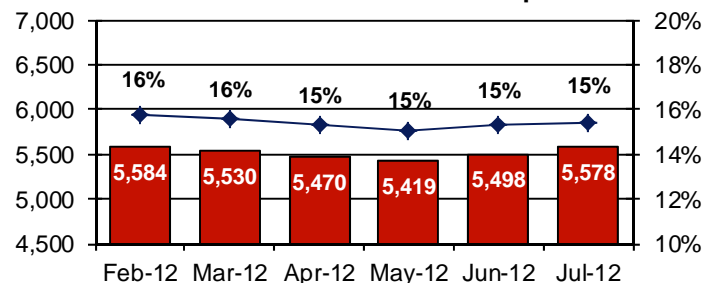


Table 5
SUPERVISED POPULATION BY GENDER, RACE and REGION / DISTRICT
July 2012

Region / District	Male					Female					% Male	Total Population
	White	Black	Hispanic	Other ¹	Total	White	Black	Hispanic	Other ¹	Total		
Chester	1,235	1,297	124	30	2,686	190	72	6	6	274	91%	2,960
Philadelphia	1,274	6,683	1,198	151	9,306	169	411	71	7	658	93%	9,964
EASTERN REGION	2,509	7,980	1,322	181	11,992	359	483	77	13	932	93%	12,924
Allentown	1,888	838	964	37	3,727	271	78	59	5	413	90%	4,140
Harrisburg	2,242	1,585	567	37	4,431	393	133	47	9	582	88%	5,013
Scranton	1,223	372	104	16	1,715	195	22	11	3	231	88%	1,946
Williamsport	724	91	8	3	826	165	19	6	2	192	81%	1,018
CENTRAL REGION	6,077	2,886	1,643	93	10,699	1,024	252	123	19	1,418	88%	12,117
Altoona	1,064	133	7	12	1,216	249	11	0	1	261	82%	1,477
Mercer	2,175	392	6	9	2,582	636	79	1	1	717	78%	3,299
Erie	997	386	57	8	1,448	193	48	4	4	249	85%	1,697
Pittsburgh	2,013	2,129	49	20	4,211	351	151	3	7	512	89%	4,723
WESTERN REGION	6,249	3,040	119	49	9,457	1,429	289	8	13	1,739	84%	11,196
TOTAL	14,835	13,906	3,084	323	32,148	2,812	1,024	208	45	4,089	89%	36,237

¹ "Other" includes Asian, Pacific Islander, Native American, Native Alaskan, and cases not elsewhere classified.

Table 6
SUPERVISED POPULATION BY EMPLOYMENT STATUS and REGION / DISTRICT
July 2012

Region / District	In Labor Force				Not In Labor Force					Total Population
	Employed Part Time	Employed Full Time	Unemployed	Employment Rate	Unable to Work ²	Student	Unearned Income ³	Unknown	Non-Reporting	
Chester	149	1,210	741	65%	275	30	87	2	466	2,960
Philadelphia	565	2,472	3,360	47%	721	130	499	0	2,217	9,964
EASTERN REGION	714	3,682	4,101	52%	996	160	586	2	2,683	12,924
Allentown	309	1,560	639	75%	501	68	328	0	735	4,140
Harrisburg	191	1,704	1,616	54%	279	33	163	2	1,025	5,013
Scranton	49	968	283	78%	131	13	172	0	330	1,946
Williamsport	99	462	129	81%	84	15	86	0	143	1,018
CENTRAL REGION	648	4,694	2,667	67%	995	129	749	2	2,233	12,117
Altoona	161	482	337	66%	105	17	169	0	206	1,477
Mercer	319	1,004	833	61%	387	39	314	1	402	3,299
Erie	125	576	387	64%	201	20	167	1	220	1,697
Pittsburgh	239	1,619	890	68%	672	52	295	2	954	4,723
WESTERN REGION	844	3,681	2,447	65%	1,365	128	945	4	1,782	11,196
TOTAL	2,206	12,057	9,215	61%	3,356	417	2,280	8	6,698	36,237

² Offender is unable to work due to a physical or mental disability, is a care provider, attends inpatient treatment, etc.

³ Offender collects income assistance, workman's compensation, monthly pension, Social Security, disability payments, etc.

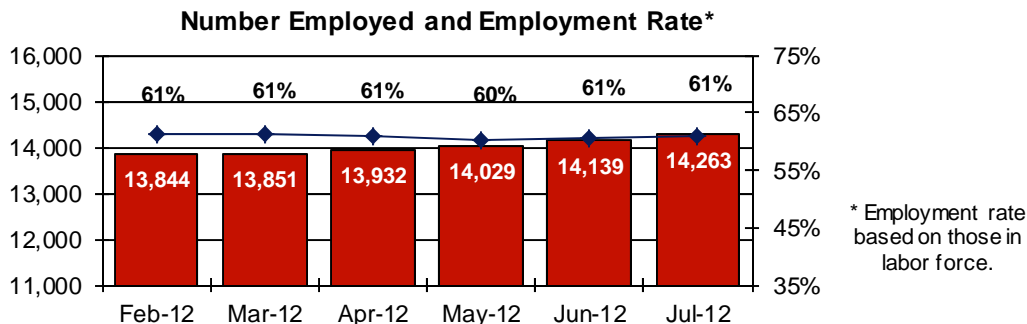
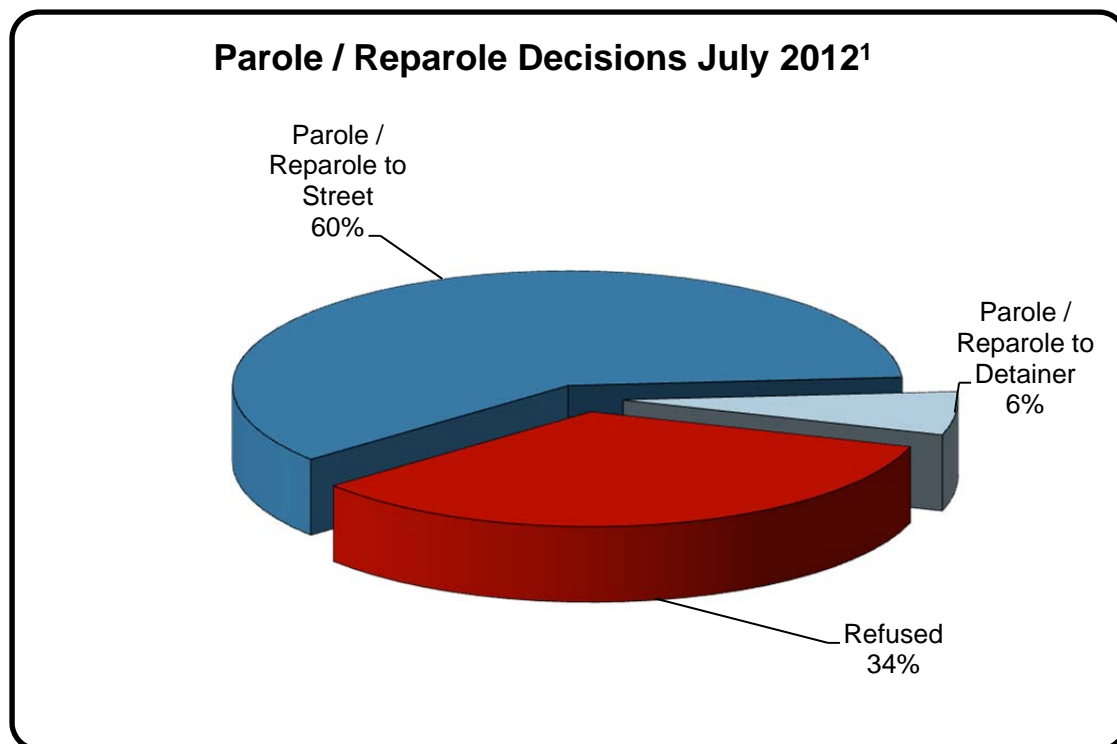


Table 7
BOARD DECISIONS
July 2012

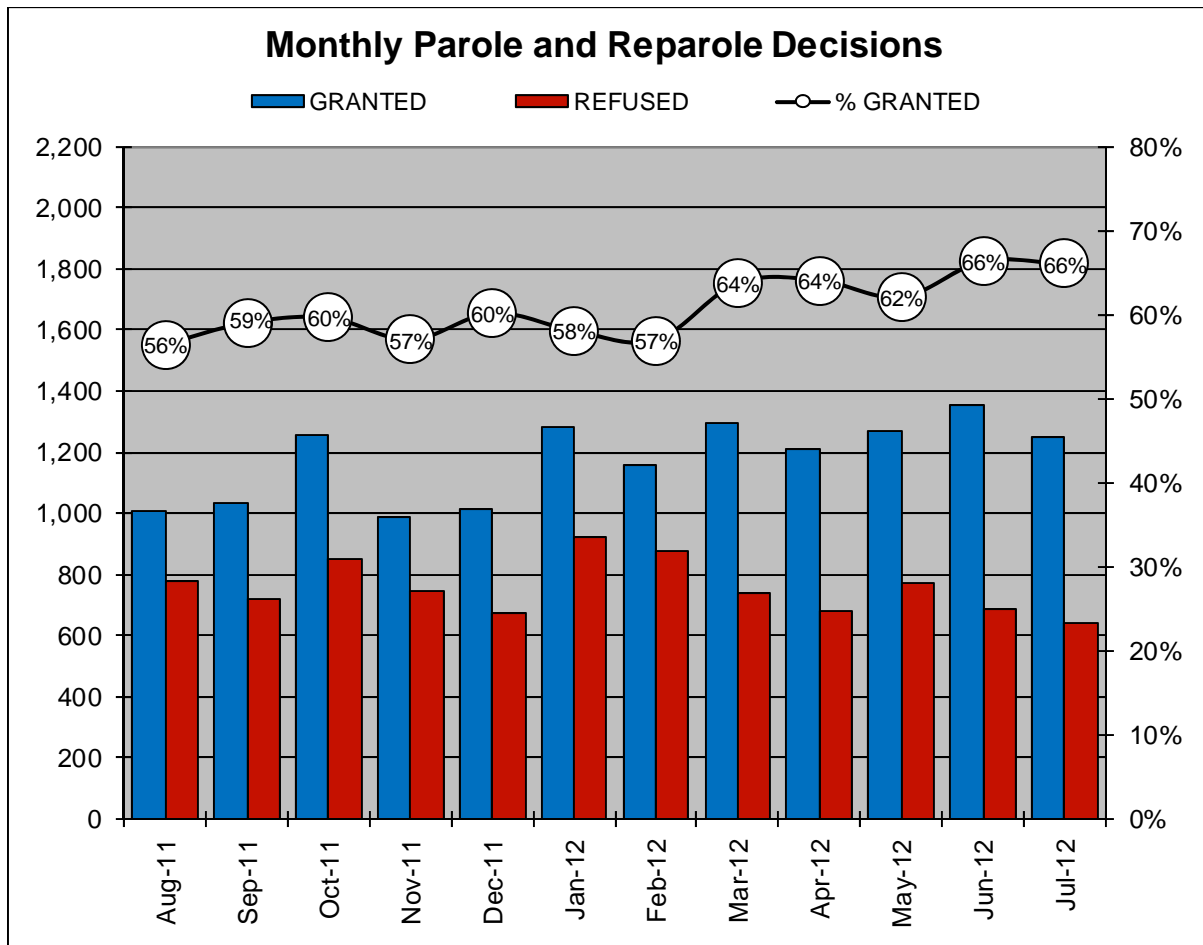
Type of Decision		Total
Parole / Reparole to Street	1,135	
Parole / Reparole to Detainer	115	
Refused	643	
Total Considered		1,893
<hr/>		
Recommitments as TPV	386	
Recommitments as CPV	153	
Recommitments as CPV and TPV	20	
Total Recommitments		559
Refer to Prior Action		95
Other Decisions		781
Total Decisions		3,328



¹ The 66% does not necessarily reflect the overall grant rate, but rather is the calculated percent of grant decisions for the total number of Board Actions produced during this period of time.

Table 8
MONTHLY PAROLE and REPAROLE DECISIONS
July 2012

MONTH-YEAR	GRANTED	REFUSED	CONSIDERED	% GRANTED
Aug-11	1,008	777	1,785	56%
Sep-11	1,032	716	1,748	59%
Oct-11	1,259	852	2,111	60%
Nov-11	986	744	1,730	57%
Dec-11	1,015	671	1,686	60%
Jan-12	1,282	925	2,207	58%
Feb-12	1,156	874	2,030	57%
Mar-12	1,296	736	2,032	64%
Apr-12	1,212	679	1,891	64%
May-12	1,266	774	2,040	62%
Jun-12	1,353	686	2,039	66%
Jul-12	1,250	643	1,893	66%
Monthly Average Over 12 Months	1,176	756	1,933	61%

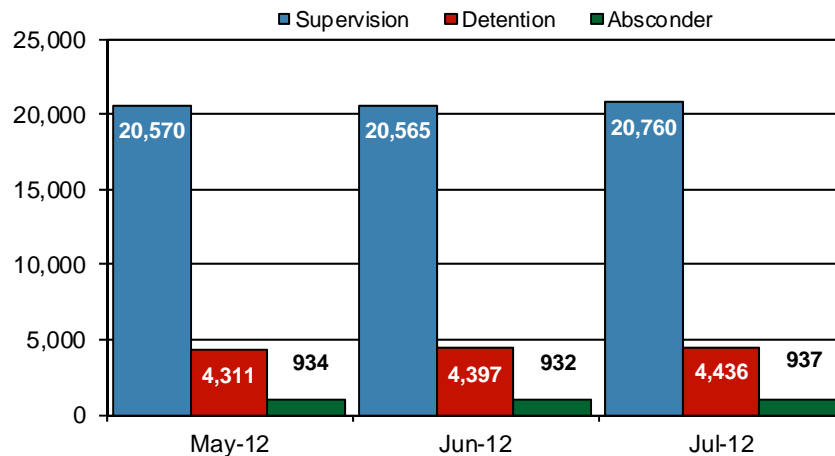


PBPP Population Breakdown By Place of Incarceration/Jurisdiction – July 2012

Offender Status - July 2012					
Status	State Prison	County Prison	County Sentence	Other States Cases	Total
Supervision	19,391	1,369	5,900	2,879	29,539
Absconder	889	48	182	1	1,120
Detention	4,177	259	1,004	138	5,578
Total	24,457	1,676	7,086	3,018	36,237

PBPP Monthly Population Profile						
Offender Status	Feb-12	Mar-12	Apr-12	May-12	Jun-12	Jul-12
State sentence from state institution	23,671	23,822	23,970	24,154	24,219	24,457
Supervision	18,582	18,802	19,014	19,209	19,198	19,391
Absconder	936	916	902	894	888	889
Detention	4,153	4,104	4,054	4,051	4,133	4,177
State sentence from county prison	1,647	1,630	1,646	1,661	1,675	1,676
Supervision	1,339	1,330	1,347	1,361	1,367	1,369
Absconder	40	33	39	40	44	48
Detention	268	267	260	260	264	259
County sentence Prob & Parole	6,983	7,039	7,079	7,066	7,058	7,086
Supervision	5,801	5,825	5,896	5,918	5,906	5,900
Absconder	186	208	180	179	187	182
Detention	996	1,006	1,003	969	965	1,004
Other state's sentence Prob & Parole	3,088	3,022	3,023	3,037	3,030	3,018
Supervision	2,921	2,869	2,870	2,898	2,893	2,879
Absconder	0	0	0	0	1	1
Detention	167	153	153	139	136	138
PBPP Population end of month	35,389	35,513	35,718	35,918	35,982	36,237

State Sentence Cases by Offender Status



PBPP Population Breakdown By Place of Incarceration/Jurisdiction – July 2012

Monthly Count of Grant and Refuse Board Actions							
Type of Decision	County Prison			State Prison			All Grant/Refuse Board Actions
	Grant	Refuse	Total	Grant	Refuse	Total	
August 2011	51	28	79	957	749	1,706	1,785
September 2011	35	20	55	997	696	1,693	1,748
October 2011	54	24	78	1,205	828	2,033	2,111
November 2011	56	26	82	930	718	1,648	1,730
December 2011	42	12	54	973	659	1,632	1,686
January 2012	45	42	87	1,237	883	2,120	2,207
February 2012	47	15	62	1,109	859	1,968	2,030
March 2012	43	22	65	1,253	714	1,967	2,032
April 2012	43	13	56	1,169	666	1,835	1,891
May 2012	35	20	55	1,231	754	1,985	2,040
June 2012	44	21	65	1,309	665	1,974	2,039
July 2012	37	13	50	1,213	630	1,843	1,893
2012 Total	294	146	440	8,521	5,171	13,692	14,132

Additions and Deletions						
	Feb-12	Mar-12	Apr-12	May-12	Jun-12	Jul-12
Total Additions	1,352	1,443	1,465	1,528	1,220	1,392
State sentence - State Prison	869	1,006	1,008	1,041	842	1,001
State sentence - County Prison	53	60	67	79	68	49
County sentence Prob & Parole	268	248	250	238	171	207
Other state's sentence	162	129	140	170	139	135
Total Deletions	1,265	1,325	1,315	1,328	1,146	1,132
State sentence - State Prison	801	802	806	791	687	682
<i>Technical Violator</i>	269	243	293	264	230	235
<i>Convicted Violator</i>	144	178	154	173	138	151
<i>Successful Completion</i>	352	350	323	325	292	266
<i>Other Case Closure</i>	37	31	36	28	27	30
State sentence - County Prison	56	65	56	54	53	46
<i>Technical Violator</i>	9	16	15	10	6	13
<i>Convicted Violator</i>	7	9	6	11	11	10
<i>Successful Completion</i>	35	35	29	31	34	21
<i>Other Case Closure</i>	5	5	6	3	2	2
County sentence Prob & Parole	272	265	306	326	256	256
<i>Technical Violator</i>	33	42	53	45	41	31
<i>Convicted Violator</i>	25	25	25	38	28	17
<i>Successful Completion</i>	148	123	163	159	113	131
<i>Other Case Closure</i>	66	75	65	84	74	77
Other state's sentence	135	193	147	157	150	148
<i>Technical Violator</i>	2	4	1	4	3	1
<i>Convicted Violator</i>	4	4	2	2	1	2
<i>Successful Completion</i>	62	79	61	53	57	65
<i>Other Case Closure</i>	67	106	83	98	89	80
PBPP Population end of month	35,389	35,513	35,718	35,918	35,982	36,237