

# COMMONWEALTH OF PENNSYLVANIA

## Board of Probation and Parole

### MONTHLY PROGRAM REPORT

December 2012



**Tom Corbett**  
Governor

Michael C. Potteiger  
Chairman

Randy P. Feathers  
Member

Michael L. Green  
Member

Craig R. McKay  
Member

Judith E. Viglione  
Member

C. James Fox  
Member

Jeffrey R. Imboden  
Member

John R. Tuttle  
Member

Lloyd A. White  
Member

Carol Lavery  
Victim Advocate

**PBPP**  
AN EQUAL OPPORTUNITY EMPLOYER

Published January 11, 2013 by the PBPP Statistical Reporting and Evidence-Based Program Evaluation Office

Copyright © 2013 Commonwealth of Pennsylvania, Board of Probation and Parole. All rights reserved.

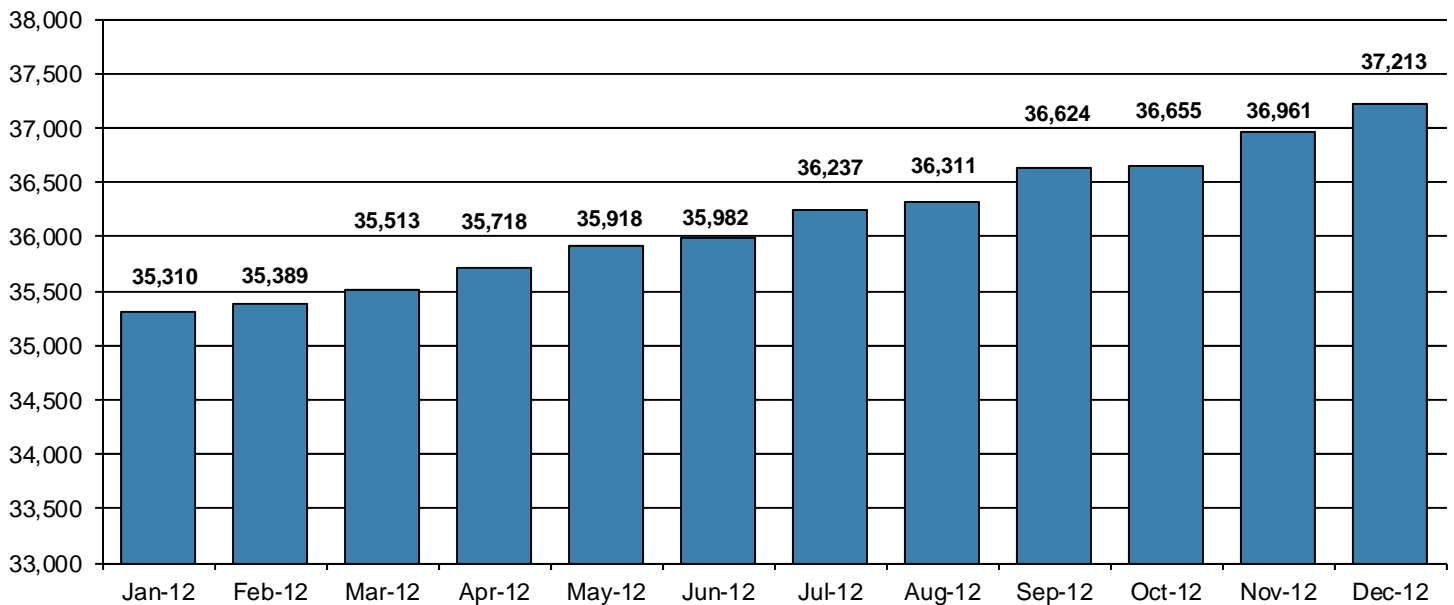
**Table 1**  
**WORKLOAD AND POPULATION CHANGES BY REGION / DISTRICT**  
**December 2012**

REGION / DISTRICT	Beginning Fiscal Yr <sup>1</sup> July 2012	Current Month Population	Fiscal YTD Index	Additions	Deletions		Number of Agents <sup>2</sup>	Average Workload	Total Workload
					Recommits/ Revocations	Other Deletions			
CHESTER	2,967	3,087	104	94	34	49	39	130	5,057
PHILADELPHIA	9,927	10,393	105	348	108	167	126	131	16,444
<b>EASTERN REGION</b>	<b>12,894</b>	<b>13,480</b>	<b>105</b>	<b>442</b>	<b>142</b>	<b>216</b>	<b>165</b>	<b>130</b>	<b>21,501</b>
ALLENTOWN	4,101	4,264	104	179	57	87	50	151	7,545
HARRISBURG	4,993	5,168	104	201	86	106	64	143	9,180
SCRANTON	1,907	1,958	103	78	27	51	31	116	3,588
WILLIAMSPORT	1,025	1,073	105	37	15	17	16	127	2,028
<b>CENTRAL REGION</b>	<b>12,026</b>	<b>12,463</b>	<b>104</b>	<b>495</b>	<b>185</b>	<b>261</b>	<b>161</b>	<b>139</b>	<b>22,342</b>
ALTOONA	1,453	1,507	104	39	14	17	22	131	2,889
MERCER	3,298	3,251	99	109	24	90	40	151	6,057
ERIE	1,669	1,746	105	60	13	19	25	127	3,176
PITTSBURGH	4,642	4,766	103	189	68	40	71	124	8,786
<b>WESTERN REGION</b>	<b>11,062</b>	<b>11,270</b>	<b>102</b>	<b>397</b>	<b>119</b>	<b>166</b>	<b>158</b>	<b>132</b>	<b>20,909</b>
<b>TOTAL Supervised</b>	<b>35,982</b>	<b>37,213</b>	<b>103</b>	<b>1,334</b>	<b>446</b>	<b>643</b>	<b>484</b>	<b>134</b>	<b>64,751</b>

<sup>1</sup> effective June 30<sup>2</sup> Filled agent positions

PA Offenders in Other States	<b>3,077</b>	<b>3,183</b>	<b>103</b>	<b>57</b>	<b>12</b>	<b>62</b>
------------------------------	--------------	--------------	------------	-----------	-----------	-----------

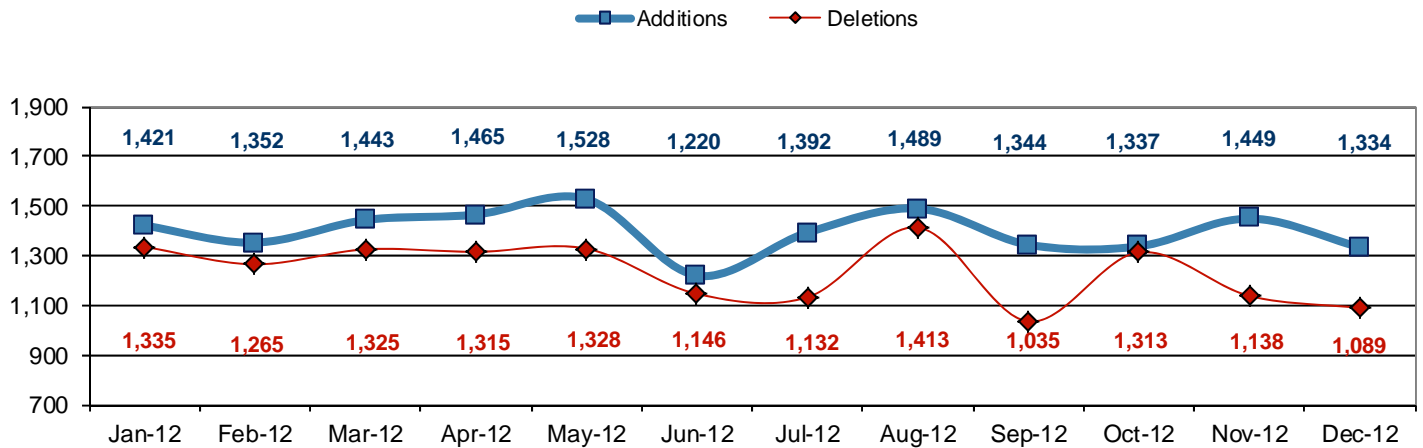
**Population - Retrospective Year View**



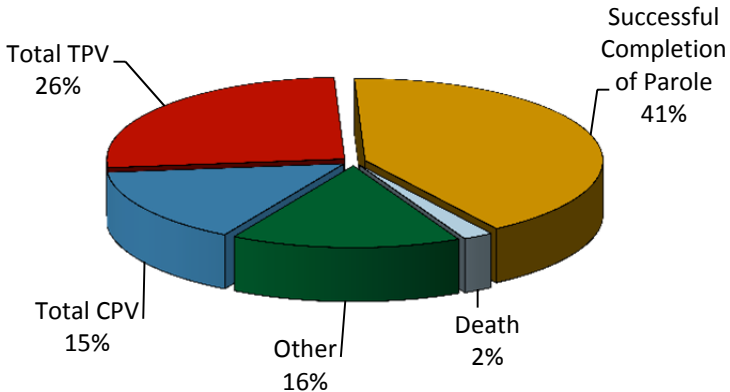
**Table 2  
SUPERVISED POPULATION ADDITIONS AND DELETIONS  
December 2012**

Population Additions and Deletions	Parole	Reparole	Special County Probation	Special County Parole	Other States' Probation	Other States' Parole	Monthly Total	Fiscal YTD Total
<b>ADDITIONS</b>	848	191	106	51	115	23	1,334	8,345
<b>DELETIONS-RECOMMITMENTS</b>								
<i>Convicted Parole Violator</i>								
State Corrections	113	20	0	0	0	0	133	915
County Corrections	5	2	15	4	0	0	26	196
Other States	0	0	0	0	3	1	4	11
<i>Total Convicted Parole Violator</i>	118	22	15	4	3	1	163	1,122
<i>Technical Parole Violator</i>								
State Corrections	165	65	3	0	0	0	233	1,450
County Corrections	9	3	28	8	0	0	48	288
Other States	0	0	0	0	2	0	2	9
<i>Total Technical Parole Violator</i>	174	68	31	8	2	0	283	1,747
<b>TOTAL RECOMMITMENTS</b>	292	90	46	12	5	1	446	2,869
Deletion Successful Completion	218	49	99	27	48	10	451	3,090
Deletion Death	14	2	2	0	3	1	22	130
Deletion Other	13	3	59	7	74	14	170	1,031
<b>TOTAL DELETIONS</b>	537	144	206	46	130	26	1,089	7,120

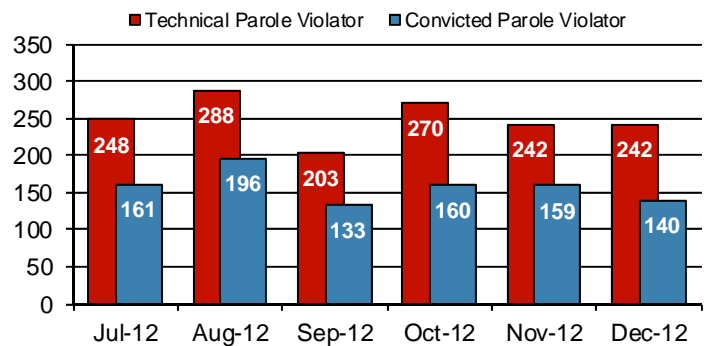
**Population Additions & Deletions-Retrospective Year View**



**Total Deletions December 2012**



**State Sentence Parole Revocations\***

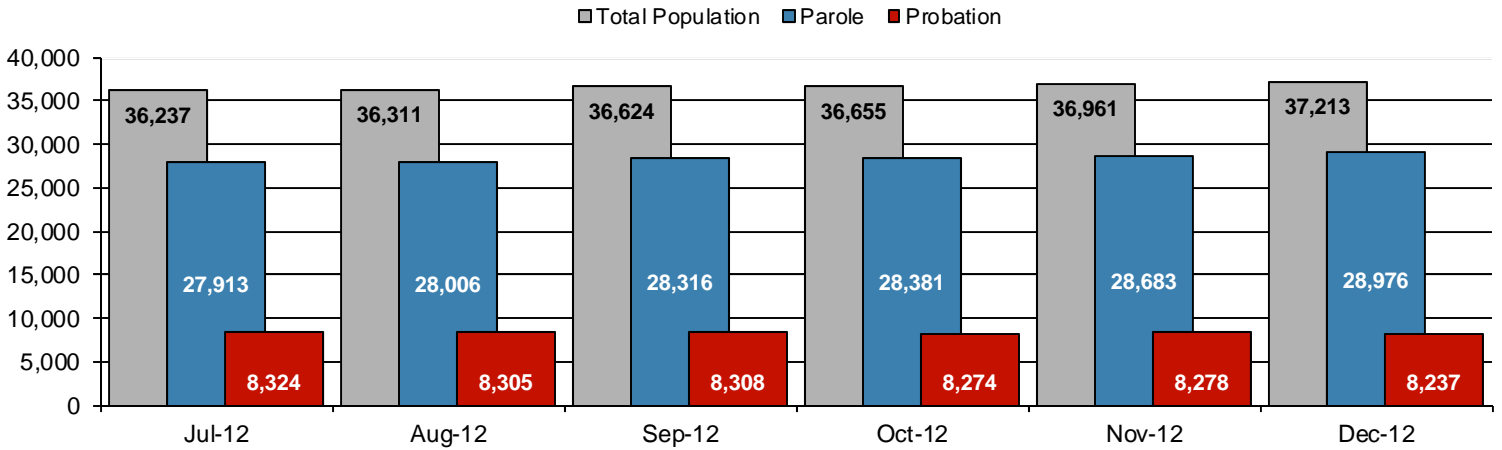


\* These revocations represent field case closure records and are dependent on case processing.

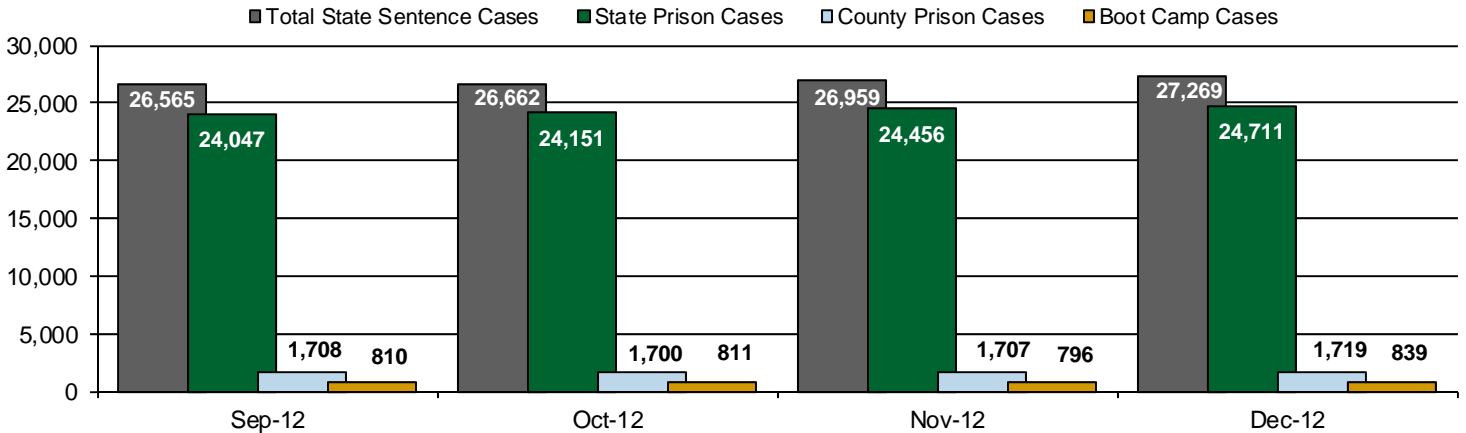
**Table 3**  
**SUPERVISED POPULATION BY ORIGINATING JURISDICTION and REGION / DISTRICT**  
**December 2012**

Region / District	PA Parole State Sentence				County		Other States		Total Population
	State Prisons	Boot Camp	County Prisons	Subtotal	Special Probation	Special Parole	Probation	Parole	
Chester	1,822	44	201	2,067	663	17	288	52	3,087
Philadelphia	7,874	155	349	8,378	1,275	13	574	153	10,393
<b>Eastern Region</b>	<b>9,696</b>	<b>199</b>	<b>550</b>	<b>10,445</b>	<b>1,938</b>	<b>30</b>	<b>862</b>	<b>205</b>	<b>13,480</b>
Allentown	2,872	109	343	3,324	485	4	363	88	4,264
Harrisburg	4,081	192	166	4,439	355	7	300	67	5,168
Scranton	1,278	8	185	1,471	203	0	201	83	1,958
Williamsport	756	15	41	812	124	7	108	22	1,073
<b>Central Region</b>	<b>8,987</b>	<b>324</b>	<b>735</b>	<b>10,046</b>	<b>1,167</b>	<b>18</b>	<b>972</b>	<b>260</b>	<b>12,463</b>
Altoona	947	19	68	1,034	292	63	91	27	1,507
Mercer	763	20	46	829	1,432	872	95	23	3,251
Erie	1,130	53	217	1,400	202	50	71	23	1,746
Pittsburgh	3,188	224	103	3,515	859	67	256	69	4,766
<b>Western Region</b>	<b>6,028</b>	<b>316</b>	<b>434</b>	<b>6,778</b>	<b>2,785</b>	<b>1,052</b>	<b>513</b>	<b>142</b>	<b>11,270</b>
<b>Total</b>	<b>24,711</b>	<b>839</b>	<b>1,719</b>	<b>27,269</b>	<b>5,890</b>	<b>1,100</b>	<b>2,347</b>	<b>607</b>	<b>37,213</b>
<b>Percent of Total</b>	<b>66%</b>	<b>2%</b>	<b>5%</b>	<b>73%</b>	<b>16%</b>	<b>3%</b>	<b>6%</b>	<b>2%</b>	<b>100%</b>

**Parole and Probation Supervised Populations**



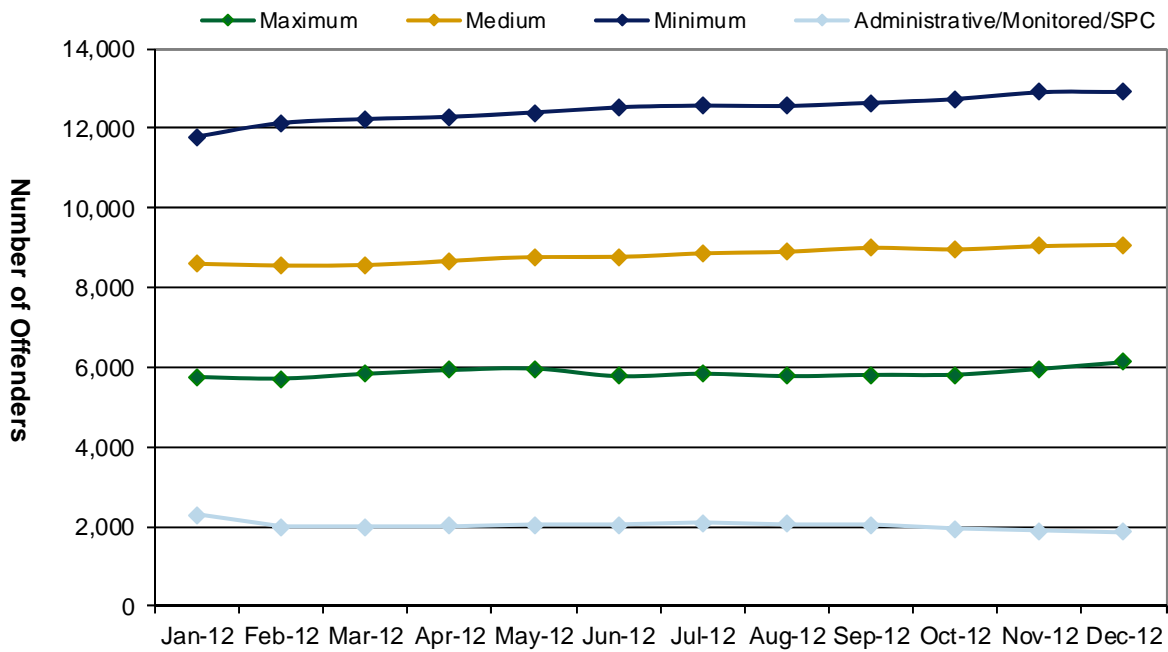
**Supervised State Sentence Cases**



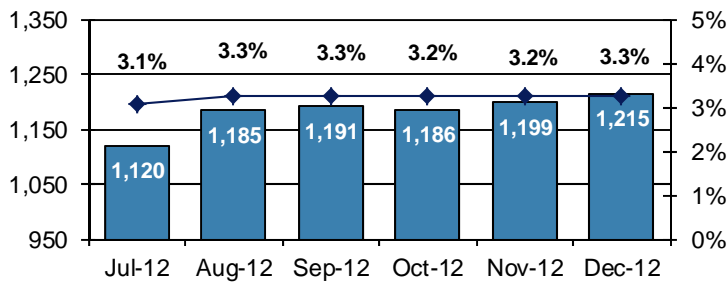
**Table 4**  
**SUPERVISED POPULATION BY GRADE OF SUPERVISION and REGION / DISTRICT**  
**December 2012**

Region / District	Reporting							Non-Reporting		Total Population
	Enhanced	Maximum	Medium	Minimum	ADM/MON /SPC	Not Classified	Subtotal	Absconder	Detainees	
Chester	5	299	723	1,271	282	14	2,594	54	439	3,087
Philadelphia	15	1,524	2,097	4,001	324	64	8,025	428	1,940	10,393
<b>Eastern Region</b>	<b>20</b>	<b>1,823</b>	<b>2,820</b>	<b>5,272</b>	<b>606</b>	<b>78</b>	<b>10,619</b>	<b>482</b>	<b>2,379</b>	<b>13,480</b>
Allentown	14	862	1,063	1,482	101	22	3,544	162	558	4,264
Harrisburg	22	982	1,178	1,594	339	25	4,140	215	813	5,168
Scranton	10	300	480	667	121	6	1,584	55	319	1,958
Williamsport	0	135	316	375	108	1	935	19	119	1,073
<b>Central Region</b>	<b>46</b>	<b>2,279</b>	<b>3,037</b>	<b>4,118</b>	<b>669</b>	<b>54</b>	<b>10,203</b>	<b>451</b>	<b>1,809</b>	<b>12,463</b>
Altoona	3	233	457	489	76	2	1,260	18	229	1,507
Mercer	3	269	916	1,354	297	6	2,845	62	344	3,251
Erie	6	350	424	561	152	8	1,501	57	188	1,746
Pittsburgh	34	1,170	1,420	1,115	64	3	3,806	145	815	4,766
<b>Western Region</b>	<b>46</b>	<b>2,022</b>	<b>3,217</b>	<b>3,519</b>	<b>589</b>	<b>19</b>	<b>9,412</b>	<b>282</b>	<b>1,576</b>	<b>11,270</b>
<b>Total</b>	<b>112</b>	<b>6,124</b>	<b>9,074</b>	<b>12,909</b>	<b>1,864</b>	<b>151</b>	<b>30,234</b>	<b>1,215</b>	<b>5,764</b>	<b>37,213</b>
<b>Percent of Total</b>	<b>&lt;1%</b>	<b>16%</b>	<b>24%</b>	<b>35%</b>	<b>5%</b>	<b>&lt;1%</b>	<b>82%</b>	<b>3%</b>	<b>15%</b>	<b>100%</b>

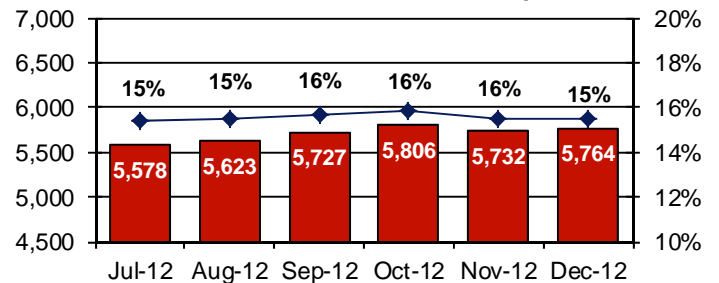
**PBPP Active Cases By Supervision Level**



**Number of Absconders and % of Population**



**Number of Detainees and % of Population**



**Table 5**  
**SUPERVISED POPULATION BY GENDER, RACE and REGION / DISTRICT**  
**December 2012**

Region / District	Male					Female					% Male	Total Population
	White	Black	Hispanic	Other <sup>1</sup>	Total	White	Black	Hispanic	Other <sup>1</sup>	Total		
Chester	1,283	1,373	119	32	2,807	198	69	8	5	280	91%	3,087
Philadelphia	1,335	6,948	1,267	157	9,707	188	426	61	11	686	93%	10,393
<b>EASTERN REGION</b>	<b>2,618</b>	<b>8,321</b>	<b>1,386</b>	<b>189</b>	<b>12,514</b>	<b>386</b>	<b>495</b>	<b>69</b>	<b>16</b>	<b>966</b>	<b>93%</b>	<b>13,480</b>
Allentown	1,920	884	1,001	32	3,837	275	79	68	5	427	90%	4,264
Harrisburg	2,287	1,683	584	42	4,596	399	117	48	8	572	89%	5,168
Scranton	1,194	393	114	13	1,714	207	25	9	3	244	88%	1,958
Williamsport	755	95	11	3	864	177	23	8	1	209	81%	1,073
<b>CENTRAL REGION</b>	<b>6,156</b>	<b>3,055</b>	<b>1,710</b>	<b>90</b>	<b>11,011</b>	<b>1,058</b>	<b>244</b>	<b>133</b>	<b>17</b>	<b>1,452</b>	<b>88%</b>	<b>12,463</b>
Altoona	1,089	143	6	10	1,248	246	11	0	2	259	83%	1,507
Mercer	2,143	371	10	7	2,531	644	71	1	4	720	78%	3,251
Erie	1,050	399	50	8	1,507	187	42	6	4	239	86%	1,746
Pittsburgh	2,015	2,149	48	20	4,232	365	160	1	8	534	89%	4,766
<b>WESTERN REGION</b>	<b>6,297</b>	<b>3,062</b>	<b>114</b>	<b>45</b>	<b>9,518</b>	<b>1,442</b>	<b>284</b>	<b>8</b>	<b>18</b>	<b>1,752</b>	<b>84%</b>	<b>11,270</b>
<b>TOTAL</b>	<b>15,071</b>	<b>14,438</b>	<b>3,210</b>	<b>324</b>	<b>33,043</b>	<b>2,886</b>	<b>1,023</b>	<b>210</b>	<b>51</b>	<b>4,170</b>	<b>89%</b>	<b>37,213</b>

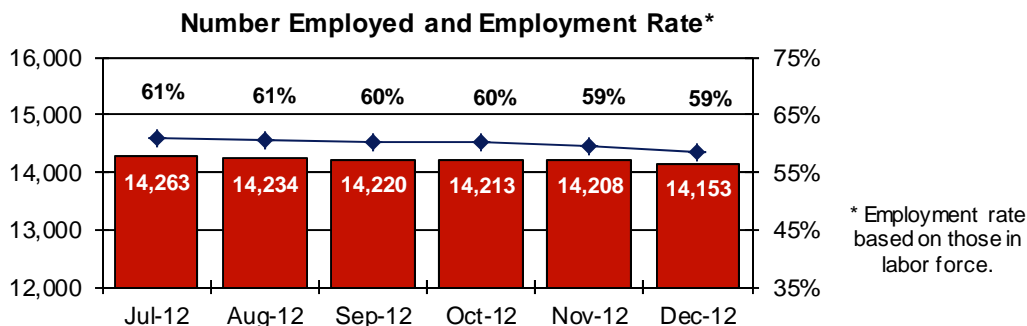
<sup>1</sup> "Other" includes Asian, Pacific Islander, Native American, Native Alaskan, and cases not elsewhere classified.

**Table 6**  
**SUPERVISED POPULATION BY EMPLOYMENT STATUS and REGION / DISTRICT**  
**December 2012**

Region / District	In Labor Force				Not In Labor Force					Total Population
	Employed Part Time	Employed Full Time	Unemployed	Employment Rate	Unable to Work <sup>2</sup>	Student	Unearned Income <sup>3</sup>	Unknown	Non-Reporting	
Chester	160	1,192	837	62%	285	35	85	0	493	3,087
Philadelphia	602	2,423	3,552	46%	855	127	464	2	2,368	10,393
<b>EASTERN REGION</b>	<b>762</b>	<b>3,615</b>	<b>4,389</b>	<b>50%</b>	<b>1,140</b>	<b>162</b>	<b>549</b>	<b>2</b>	<b>2,861</b>	<b>13,480</b>
Allentown	297	1,591	726	72%	548	57	325	0	720	4,264
Harrisburg	216	1,727	1,733	53%	274	32	157	1	1,028	5,168
Scranton	43	935	332	75%	93	13	168	0	374	1,958
Williamsport	89	469	186	75%	96	12	83	0	138	1,073
<b>CENTRAL REGION</b>	<b>645</b>	<b>4,722</b>	<b>2,977</b>	<b>64%</b>	<b>1,011</b>	<b>114</b>	<b>733</b>	<b>1</b>	<b>2,260</b>	<b>12,463</b>
Altoona	137	475	369	62%	108	20	151	0	247	1,507
Mercer	288	991	825	61%	364	45	330	2	406	3,251
Erie	114	555	460	59%	176	25	170	1	245	1,746
Pittsburgh	254	1,595	958	66%	654	59	284	2	960	4,766
<b>WESTERN REGION</b>	<b>793</b>	<b>3,616</b>	<b>2,612</b>	<b>63%</b>	<b>1,302</b>	<b>149</b>	<b>935</b>	<b>5</b>	<b>1,858</b>	<b>11,270</b>
<b>TOTAL</b>	<b>2,200</b>	<b>11,953</b>	<b>9,978</b>	<b>59%</b>	<b>3,453</b>	<b>425</b>	<b>2,217</b>	<b>8</b>	<b>6,979</b>	<b>37,213</b>

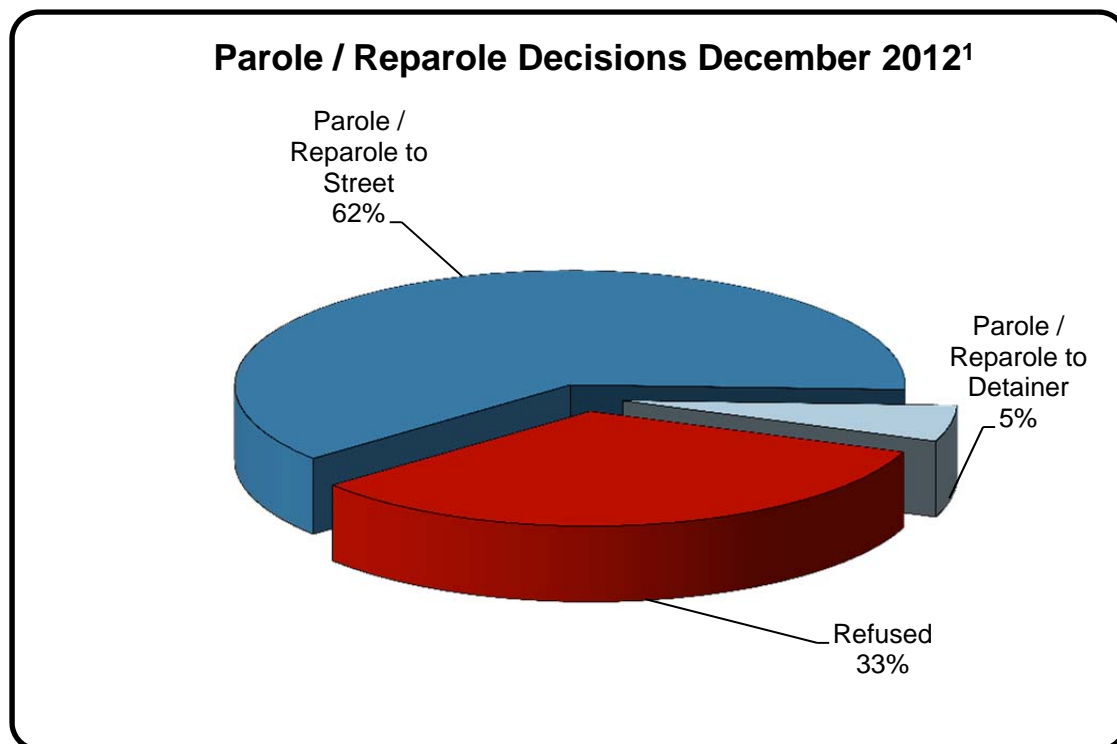
<sup>2</sup> Offender is unable to work due to a physical or mental disability, is a care provider, attends inpatient treatment, etc.

<sup>3</sup> Offender collects income assistance, workman's compensation, monthly pension, Social Security, disability payments, etc.



**Table 7**  
**BOARD DECISIONS**  
**December 2012**

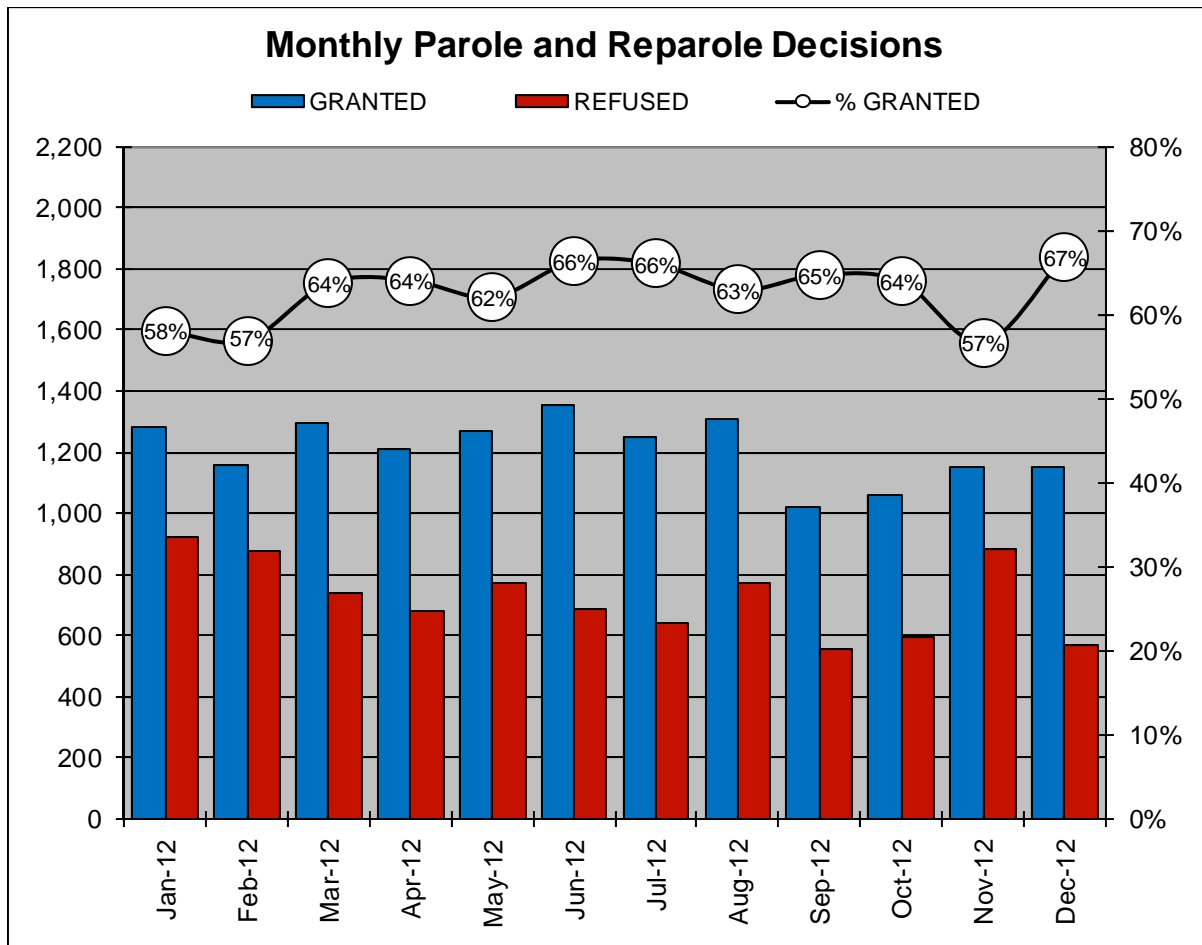
<b>Type of Decision</b>		<b>Total</b>
Parole / Reparole to Street	1,063	
Parole / Reparole to Detainer	88	
Refused	570	
<b>Total Considered</b>		<b>1,721</b>
<hr/>		
Recommitments as TPV	288	
Recommitments as CPV	111	
Recommitments as CPV and TPV	29	
<b>Total Recommitments</b>		<b>428</b>
Refer to Prior Action		72
Other Decisions		684
<b>Total Decisions</b>		<b>2,905</b>



<sup>1</sup> The 67% does not necessarily reflect the overall grant rate, but rather is the calculated percent of grant decisions for the total number of Board Actions produced during this period of time.

**Table 8**  
**MONTHLY PAROLE and REPAROLE DECISIONS**  
**December 2012**

MONTH-YEAR	GRANTED	REFUSED	CONSIDERED	% GRANTED
Jan-12	1,282	925	2,207	58%
Feb-12	1,156	874	2,030	57%
Mar-12	1,296	736	2,032	64%
Apr-12	1,212	679	1,891	64%
May-12	1,266	774	2,040	62%
Jun-12	1,353	686	2,039	66%
Jul-12	1,250	643	1,893	66%
Aug-12	1,309	771	2,080	63%
Sep-12	1,022	557	1,579	65%
Oct-12	1,059	596	1,655	64%
Nov-12	1,152	881	2,033	57%
Dec-12	1,151	570	1,721	67%
<b>Monthly Average Over 12 Months</b>	1,209	724	1,933	63%



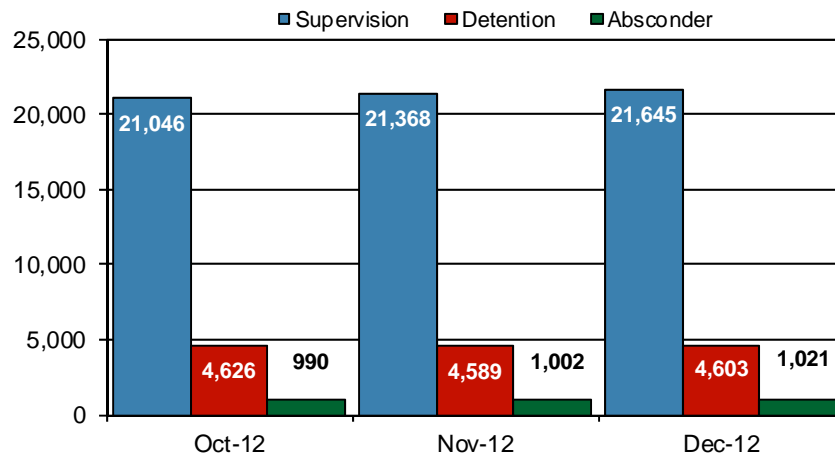


## PBPP Population Breakdown By Place of Incarceration/Jurisdiction – December 2012

Offender Status - December 2012					
Status	State Prison	County Prison	County Sentence	Other States' Cases	Total
Supervision	20,261	1,384	5,767	2,822	30,234
Absconder	973	48	194	0	1,215
Detention	4,316	287	1,029	132	5,764
<b>Total</b>	<b>25,550</b>	<b>1,719</b>	<b>6,990</b>	<b>2,954</b>	<b>37,213</b>

PBPP Monthly Population Profile						
Offender Status	Jul-12	Aug-12	Sep-12	Oct-12	Nov-12	Dec-12
<b>State sentence from state institution</b>	<b>24,457</b>	<b>24,554</b>	<b>24,857</b>	<b>24,962</b>	<b>25,252</b>	<b>25,550</b>
Supervision	19,391	19,411	19,622	19,662	19,994	20,261
Absconder	889	943	937	940	956	973
Detention	4,177	4,200	4,298	4,360	4,302	4,316
<b>State sentence from county prison</b>	<b>1,676</b>	<b>1,691</b>	<b>1,708</b>	<b>1,700</b>	<b>1,707</b>	<b>1,719</b>
Supervision	1,369	1,381	1,391	1,384	1,374	1,384
Absconder	48	45	50	50	46	48
Detention	259	265	267	266	287	287
<b>County sentence Prob &amp; Parole</b>	<b>7,086</b>	<b>7,044</b>	<b>7,035</b>	<b>7,010</b>	<b>7,026</b>	<b>6,990</b>
Supervision	5,900	5,840	5,815	5,778	5,832	5,767
Absconder	182	196	204	196	197	194
Detention	1,004	1,008	1,016	1,036	997	1,029
<b>Other states' sentence Prob &amp; Parole</b>	<b>3,018</b>	<b>3,022</b>	<b>3,024</b>	<b>2,983</b>	<b>2,976</b>	<b>2,954</b>
Supervision	2,879	2,871	2,878	2,839	2,830	2,822
Absconder	1	1	0	0	0	0
Detention	138	150	146	144	146	132
<b>PBPP Population end of month</b>	<b>36,237</b>	<b>36,311</b>	<b>36,624</b>	<b>36,655</b>	<b>36,961</b>	<b>37,213</b>

### State Sentence Cases by Offender Status



## PBPP Population Breakdown By Place of Incarceration/Jurisdiction – December 2012

Monthly Count of Grant and Refuse Board Actions							
Type of Decision	County Prison			State Prison			All Grant/Refuse Board Actions
	Grant	Refuse	Total	Grant	Refuse	Total	
January 2012	45	42	87	1,237	883	2,120	<b>2,207</b>
February 2012	47	15	62	1,109	859	1,968	<b>2,030</b>
March 2012	43	22	65	1,253	714	1,967	<b>2,032</b>
April 2012	43	13	56	1,169	666	1,835	<b>1,891</b>
May 2012	35	20	55	1,231	754	1,985	<b>2,040</b>
June 2012	44	21	65	1,309	665	1,974	<b>2,039</b>
July 2012	37	13	50	1,213	630	1,843	<b>1,893</b>
August 2012	41	14	55	1,268	757	2,025	<b>2,080</b>
September 2012	24	10	34	998	547	1,545	<b>1,579</b>
October 2012	20	10	30	1,039	586	1,625	<b>1,655</b>
November 2012	30	10	40	1,122	871	1,993	<b>2,033</b>
December 2012	12	7	19	1,139	563	1,702	<b>1,721</b>
<b>2012 Total</b>	<b>421</b>	<b>197</b>	<b>618</b>	<b>14,087</b>	<b>8,495</b>	<b>22,582</b>	<b>23,200</b>

Additions and Deletions						
	Jul-12	Aug-12	Sep-12	Oct-12	Nov-12	Dec-12
<b>Total Additions</b>	<b>1,392</b>	<b>1,489</b>	<b>1,344</b>	<b>1,337</b>	<b>1,449</b>	<b>1,334</b>
State sentence - State Prison	1,001	1,067	961	960	1,059	997
State sentence - County Prison	49	73	50	41	65	42
County sentence Prob & Parole	207	198	199	206	203	157
Other states' sentence	135	151	134	130	122	138
<b>Total Deletions</b>	<b>1,132</b>	<b>1,413</b>	<b>1,035</b>	<b>1,313</b>	<b>1,138</b>	<b>1,089</b>
<b>State sentence - State Prison</b>	<b>682</b>	<b>874</b>	<b>592</b>	<b>763</b>	<b>692</b>	<b>642</b>
<i>Technical Violator</i>	235	274	196	261	232	230
<i>Convicted Violator</i>	151	190	123	153	155	133
<i>Successful Completion</i>	266	375	250	332	281	251
<i>Other Case Closure</i>	30	35	23	17	24	28
<b>State sentence - County Prison</b>	<b>46</b>	<b>54</b>	<b>42</b>	<b>56</b>	<b>45</b>	<b>39</b>
<i>Technical Violator</i>	13	14	7	9	10	12
<i>Convicted Violator</i>	10	6	10	7	4	7
<i>Successful Completion</i>	21	32	22	39	31	16
<i>Other Case Closure</i>	2	2	3	1	0	4
<b>County sentence Prob &amp; Parole</b>	<b>256</b>	<b>340</b>	<b>273</b>	<b>323</b>	<b>270</b>	<b>252</b>
<i>Technical Violator</i>	31	46	38	49	41	39
<i>Convicted Violator</i>	17	34	30	30	32	19
<i>Successful Completion</i>	131	172	125	159	120	126
<i>Other Case Closure</i>	77	88	80	85	77	68
<b>Other states' sentence</b>	<b>148</b>	<b>145</b>	<b>128</b>	<b>171</b>	<b>131</b>	<b>156</b>
<i>Technical Violator</i>	1	1	2	3	1	2
<i>Convicted Violator</i>	2	1	0	4	0	4
<i>Successful Completion</i>	65	46	53	63	56	58
<i>Other Case Closure</i>	80	97	73	101	74	92
<b>PBPP Population end of month</b>	<b>36,237</b>	<b>36,311</b>	<b>36,624</b>	<b>36,655</b>	<b>36,961</b>	<b>37,213</b>