

# COMMONWEALTH OF PENNSYLVANIA

## Board of Probation and Parole

### MONTHLY PROGRAM REPORT

October 2011



**Tom Corbett**  
Governor

Lloyd A. White  
Chairman

C. James Fox  
Member

Jeffrey R. Imboden  
Member

John R. Tuttle  
Member

Michael L. Green  
Member

Matthew T. Mangino, Esq  
Member

Judith E. Viglione  
Member

Carol Lavery  
Victim Advocate

**PBPP**  
AN EQUAL OPPORTUNITY EMPLOYER

Published November 14, 2011 by the PBPP Statistical Reporting and Evidence-Based Program Evaluation Office

Copyright © 2011 Commonwealth of Pennsylvania, Board of Probation and Parole. All rights reserved.

**Table 1  
WORKLOAD AND POPULATION CHANGES BY REGION / DISTRICT  
October 2011**

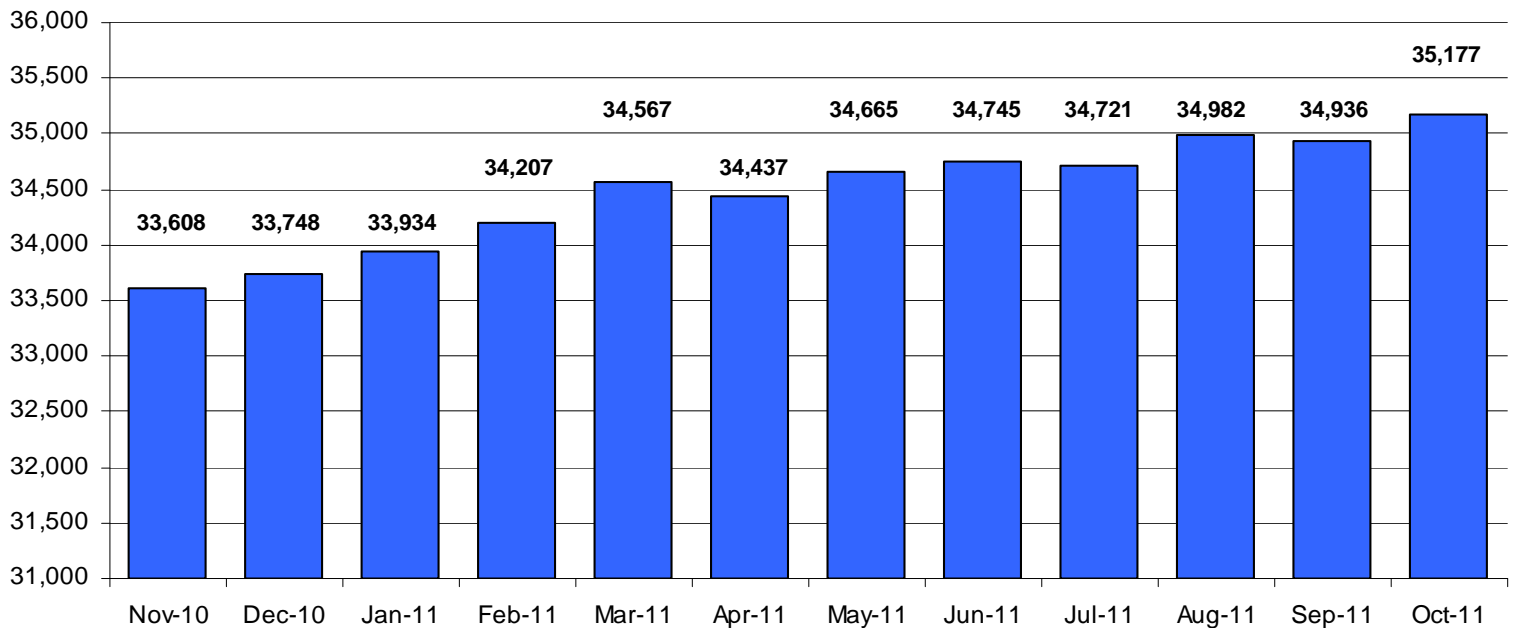
REGION / DISTRICT	Beginning Fiscal Yr <sup>1</sup> July 2011	Current Month Population	Fiscal YTD Index	Additions	Deletions		Number of Agents <sup>2</sup>	Average Workload	Total Workload
					Recommits/ Revocations	Other Deletions			
CHESTER	2,782	2,799	101	85	21	47	39	119	4,634
PHILADELPHIA	9,561	9,749	102	417	101	219	129	120	15,531
<b>EASTERN REGION</b>	<b>12,343</b>	<b>12,548</b>	<b>102</b>	<b>502</b>	<b>122</b>	<b>266</b>	<b>168</b>	<b>120</b>	<b>20,165</b>
ALLENTOWN	4,051	4,070	100	191	84	81	50	143	7,141
HARRISBURG	4,687	4,801	102	183	64	80	56	154	8,603
SCRANTON	1,876	1,923	103	103	43	44	29	121	3,522
WILLIAMSPORT	1,000	999	100	32	15	28	14	138	1,927
<b>CENTRAL REGION</b>	<b>11,614</b>	<b>11,793</b>	<b>102</b>	<b>509</b>	<b>206</b>	<b>233</b>	<b>149</b>	<b>142</b>	<b>21,193</b>
ALTOONA	1,520	1,530	101	41	20	23	24	124	2,964
MERCER	3,230	3,178	98	160	45	122	42	143	5,986
ERIE	1,544	1,609	104	53	8	0	23	124	2,844
PITTSBURGH	4,494	4,519	101	165	62	86	66	129	8,491
<b>WESTERN REGION</b>	<b>10,788</b>	<b>10,836</b>	<b>100</b>	<b>419</b>	<b>135</b>	<b>231</b>	<b>155</b>	<b>131</b>	<b>20,285</b>
<b>TOTAL Supervised</b>	<b>34,745</b>	<b>35,177</b>	<b>101</b>	<b>1,430</b>	<b>463</b>	<b>730</b>	<b>472</b>	<b>131</b>	<b>61,643</b>

<sup>1</sup> effective June 30

<sup>2</sup> Filled agent positions

PA Offenders in Other States	<b>3,116</b>	<b>3,189</b>	<b>102</b>	<b>75</b>	<b>14</b>	<b>70</b>
------------------------------	--------------	--------------	------------	-----------	-----------	-----------

**Population - Retrospective Year View**

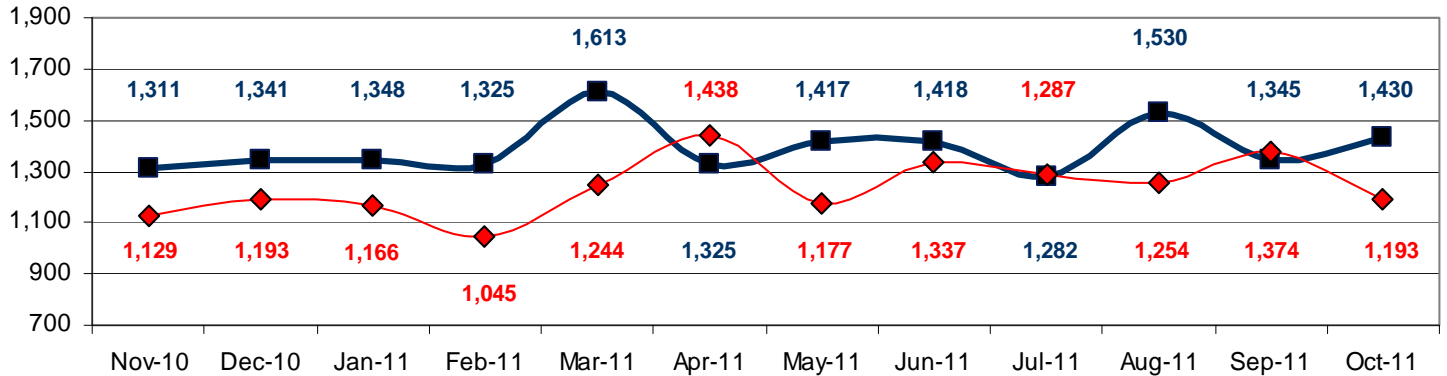


**Table 2  
SUPERVISED POPULATION ADDITIONS AND DELETIONS  
October 2011**

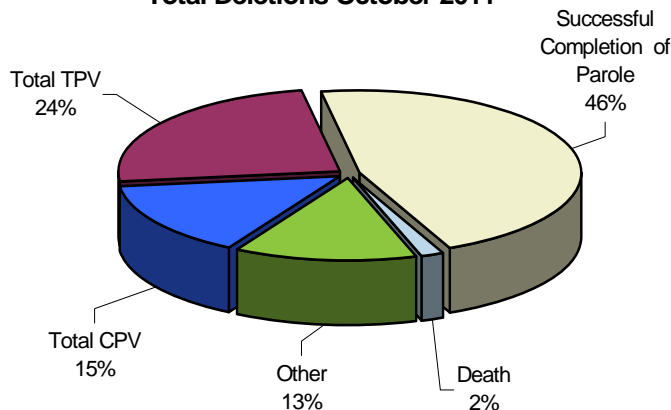
Population Additions and Deletions	Parole	Reparole	Special County Probation	Special County Parole	Other States' Probation	Other States' Parole	Monthly Total	Fiscal YTD Total
<b>ADDITIONS</b>	809	207	219	65	104	26	1,430	5,587
<b>DELETIONS-RECOMMITMENTS</b>								
<i>Convicted Parole Violator</i>								
State Corrections	113	29	1	0	0	0	143	625
County Corrections	7	3	14	6	0	0	30	141
Other States	0	0	0	0	1	2	3	10
<b>Total Convicted Parole Violator</b>	120	32	15	6	1	2	176	776
<i>Technical Parole Violator</i>								
State Corrections	193	46	3	0	0	0	242	1,009
County Corrections	9	4	24	6	0	0	43	177
Other States	0	0	0	0	1	1	2	4
<b>Total Technical Parole Violator</b>	202	50	27	6	1	1	287	1,190
<b>TOTAL RECOMMITMENTS</b>	322	82	42	12	2	3	463	1,966
Deletion Successful Completion	300	57	106	28	51	9	551	2,383
Deletion Death	9	5	5	0	0	0	19	78
Deletion Other	11	1	68	6	62	12	160	681
<b>TOTAL DELETIONS</b>	642	145	221	46	115	24	1,193	5,108

**Population Additions & Deletions-Retrospective Year View**

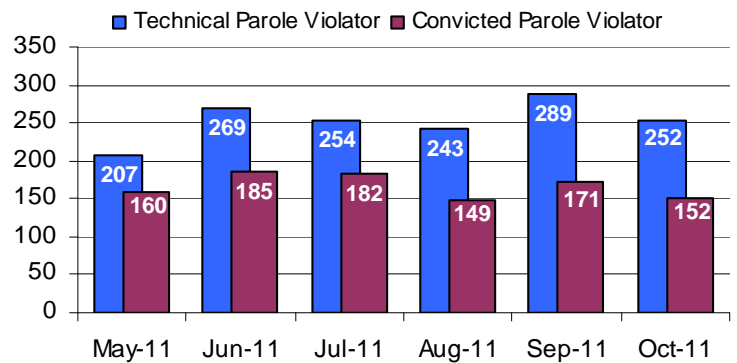
■ ADDITIONS ◆ DELETIONS



**Total Deletions October 2011**



**State Sentence Parole Revocations\***



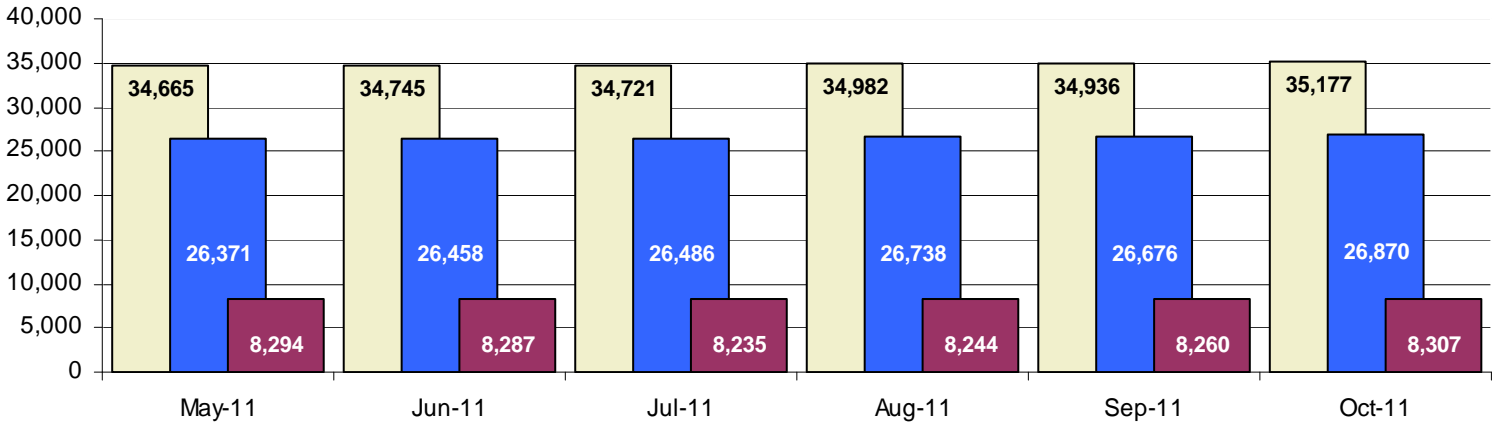
\* These revocations represent field case closure records and are dependent on case processing.

**Table 3**  
**SUPERVISED POPULATION BY ORIGINATING JURISDICTION and REGION / DISTRICT**  
**October 2011**

Region / District	PA Parole State Sentence				County		Other States		Total Population
	State Prisons	Boot Camp	County Prisons	Subtotal	Special Probation	Special Parole	Probation	Parole	
Chester	1,597	44	220	1,861	567	13	303	55	2,799
Philadelphia	7,230	159	330	7,719	1,257	9	627	137	9,749
<b>Eastern Region</b>	<b>8,827</b>	<b>203</b>	<b>550</b>	<b>9,580</b>	<b>1,824</b>	<b>22</b>	<b>930</b>	<b>192</b>	<b>12,548</b>
Allentown	2,648	129	380	3,157	422	4	399	88	4,070
Harrisburg	3,744	190	142	4,076	386	3	280	56	4,801
Scranton	1,172	10	213	1,395	206	1	245	76	1,923
Williamsport	702	17	37	756	119	5	94	25	999
<b>Central Region</b>	<b>8,266</b>	<b>346</b>	<b>772</b>	<b>9,384</b>	<b>1,133</b>	<b>13</b>	<b>1,018</b>	<b>245</b>	<b>11,793</b>
Altoona	893	20	67	980	363	80	80	27	1,530
Mercer	732	18	34	784	1,399	866	104	25	3,178
Erie	1,064	36	162	1,262	197	57	76	17	1,609
Pittsburgh	2,942	183	65	3,190	898	74	285	72	4,519
<b>Western Region</b>	<b>5,631</b>	<b>257</b>	<b>328</b>	<b>6,216</b>	<b>2,857</b>	<b>1,077</b>	<b>545</b>	<b>141</b>	<b>10,836</b>
<b>Total</b>	<b>22,724</b>	<b>806</b>	<b>1,650</b>	<b>25,180</b>	<b>5,814</b>	<b>1,112</b>	<b>2,493</b>	<b>578</b>	<b>35,177</b>
<b>Percent of Total</b>	<b>65%</b>	<b>2%</b>	<b>5%</b>	<b>72%</b>	<b>16%</b>	<b>3%</b>	<b>7%</b>	<b>2%</b>	<b>100%</b>

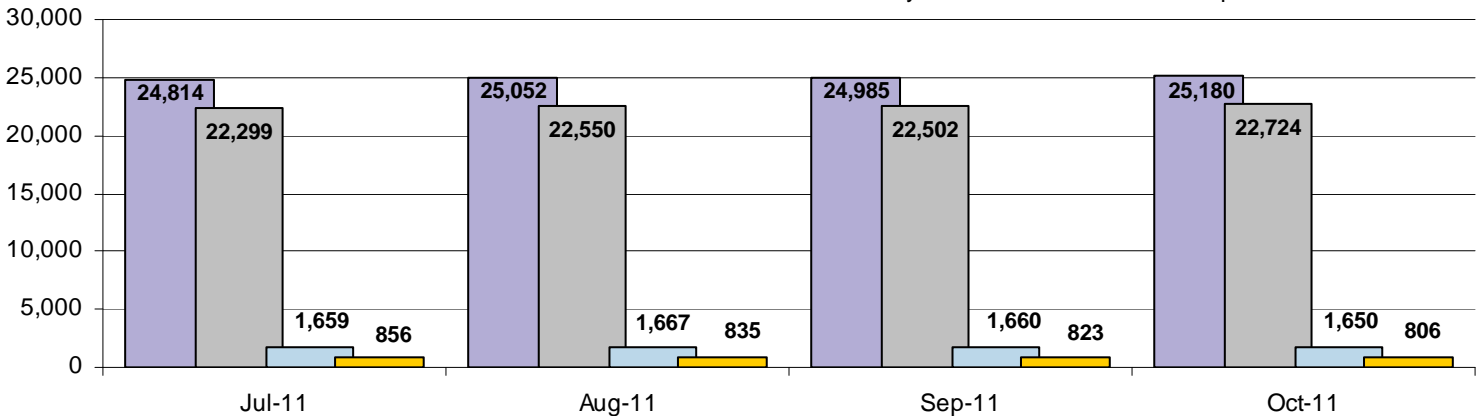
**Parole and Probation Supervised Populations**

□ Total Population    ■ Parole    ■ Probation



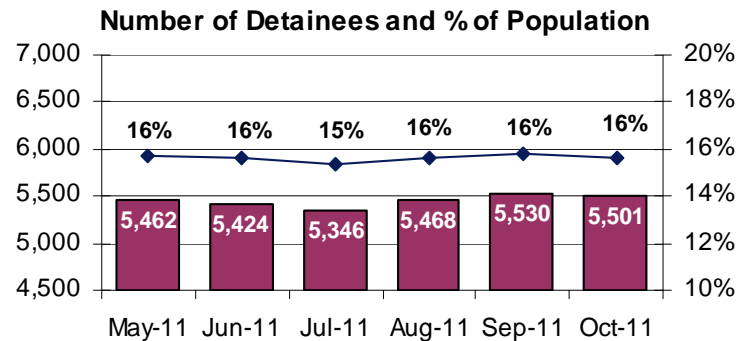
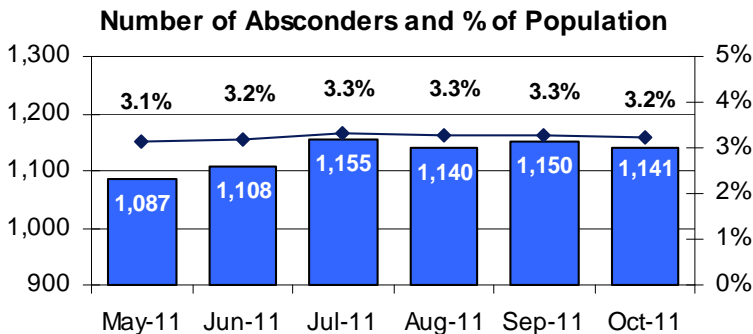
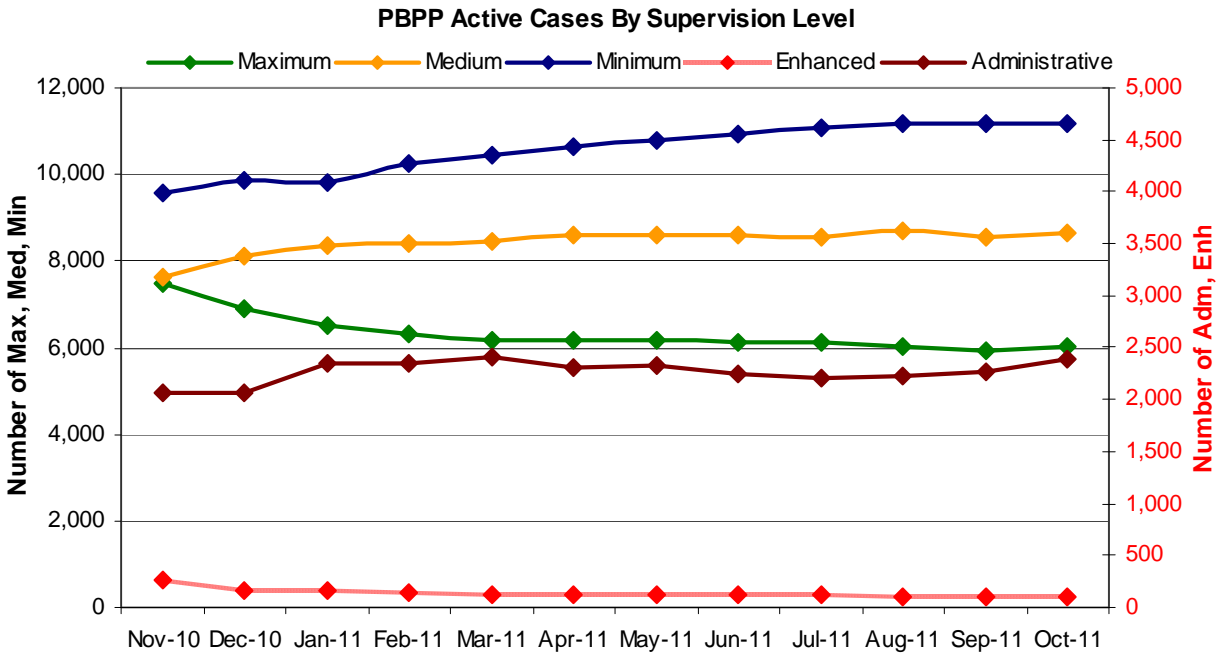
**Supervised State Sentence Cases**

■ Total State Sentence Cases    ■ State Prison Cases    ■ County Prison Cases    ■ Boot Camp Cases



**Table 4**  
**SUPERVISED POPULATION BY GRADE OF SUPERVISION and REGION / DISTRICT**  
**October 2011**

Region / District	Reporting							Non-Reporting		Total Population
	Enhanced	Maximum	Medium	Minimum	ADM / SPC	Not Classified	Subtotal	Absconder	Detainees	
Chester	4	279	715	1,019	338	13	2,368	52	379	2,799
Philadelphia	4	1,509	2,090	3,341	465	105	7,514	453	1,782	9,749
<b>Eastern Region</b>	<b>8</b>	<b>1,788</b>	<b>2,805</b>	<b>4,360</b>	<b>803</b>	<b>118</b>	<b>9,882</b>	<b>505</b>	<b>2,161</b>	<b>12,548</b>
Allentown	12	858	830	1,291	248	21	3,260	172	638	4,070
Harrisburg	21	930	1,105	1,312	439	23	3,830	155	816	4,801
Scranton	12	282	456	687	156	13	1,606	38	279	1,923
Williamsport	1	96	314	342	119	2	874	11	114	999
<b>Central Region</b>	<b>46</b>	<b>2,166</b>	<b>2,705</b>	<b>3,632</b>	<b>962</b>	<b>59</b>	<b>9,570</b>	<b>376</b>	<b>1,847</b>	<b>11,793</b>
Altoona	4	279	479	420	95	0	1,277	23	230	1,530
Mercer	4	304	900	1,352	227	7	2,794	61	323	3,178
Erie	5	249	474	505	164	1	1,398	44	167	1,609
Pittsburgh	37	1,240	1,268	916	142	11	3,614	132	773	4,519
<b>Western Region</b>	<b>50</b>	<b>2,072</b>	<b>3,121</b>	<b>3,193</b>	<b>628</b>	<b>19</b>	<b>9,083</b>	<b>260</b>	<b>1,493</b>	<b>10,836</b>
<b>Total</b>	<b>104</b>	<b>6,026</b>	<b>8,631</b>	<b>11,185</b>	<b>2,393</b>	<b>196</b>	<b>28,535</b>	<b>1,141</b>	<b>5,501</b>	<b>35,177</b>
<b>Percent of Total</b>	<b>&lt;1%</b>	<b>17%</b>	<b>25%</b>	<b>32%</b>	<b>7%</b>	<b>&lt;1%</b>	<b>81%</b>	<b>3%</b>	<b>16%</b>	<b>100%</b>



**Table 5**  
**SUPERVISED POPULATION BY GENDER, RACE and REGION / DISTRICT**  
**October 2011**

Region / District	Male					Female					% Male	Total Population
	White	Black	Hispanic	Other <sup>1</sup>	Total	White	Black	Hispanic	Other <sup>1</sup>	Total		
Chester	1,139	1,239	120	31	2,529	185	76	4	5	270	90%	2,799
Philadelphia	1,271	6,469	1,196	152	9,088	180	397	76	8	661	93%	9,749
<b>EASTERN REGION</b>	<b>2,410</b>	<b>7,708</b>	<b>1,316</b>	<b>183</b>	<b>11,617</b>	<b>365</b>	<b>473</b>	<b>80</b>	<b>13</b>	<b>931</b>	<b>93%</b>	<b>12,548</b>
Allentown	1,886	801	935	43	3,665	256	78	62	9	405	90%	4,070
Harrisburg	2,122	1,531	524	42	4,219	384	142	48	8	582	88%	4,801
Scranton	1,196	349	112	21	1,678	207	27	8	3	245	87%	1,923
Williamsport	691	92	12	3	798	173	23	4	1	201	80%	999
<b>CENTRAL REGION</b>	<b>5,895</b>	<b>2,773</b>	<b>1,583</b>	<b>109</b>	<b>10,360</b>	<b>1,020</b>	<b>270</b>	<b>122</b>	<b>21</b>	<b>1,433</b>	<b>88%</b>	<b>11,793</b>
Altoona	1,081	138	7	15	1,241	273	15	0	1	289	81%	1,530
Mercer	2,117	372	3	11	2,503	599	71	2	3	675	79%	3,178
Erie	952	364	57	9	1,382	181	41	2	3	227	86%	1,609
Pittsburgh	1,953	1,967	44	15	3,979	376	153	5	6	540	88%	4,519
<b>WESTERN REGION</b>	<b>6,103</b>	<b>2,841</b>	<b>111</b>	<b>50</b>	<b>9,105</b>	<b>1,429</b>	<b>280</b>	<b>9</b>	<b>13</b>	<b>1,731</b>	<b>84%</b>	<b>10,836</b>
<b>TOTAL</b>	<b>14,408</b>	<b>13,322</b>	<b>3,010</b>	<b>342</b>	<b>31,082</b>	<b>2,814</b>	<b>1,023</b>	<b>211</b>	<b>47</b>	<b>4,095</b>	<b>88%</b>	<b>35,177</b>

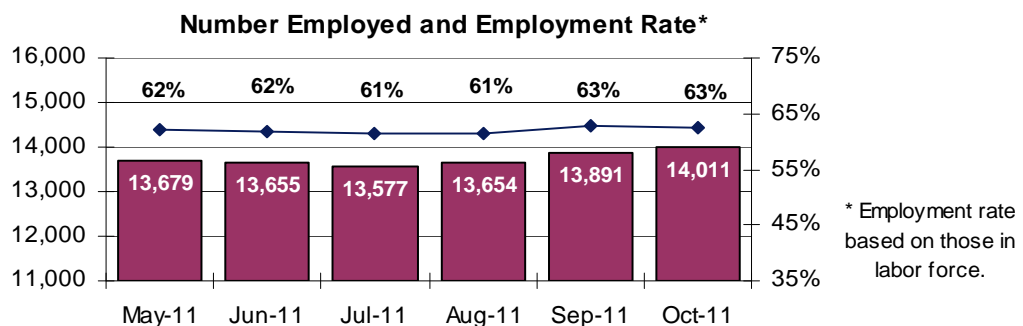
<sup>1</sup> "Other" includes Asian, Pacific Islander, Indian (Native American and Native Alaskan), and cases not elsewhere classified.

**Table 6**  
**SUPERVISED POPULATION BY EMPLOYMENT STATUS and REGION / DISTRICT**  
**October 2011**

Region / District	In Labor Force				Not In Labor Force					Total Population
	Employed Part Time	Employed Full Time	Unemployed	Employment Rate	Unable to Work <sup>2</sup>	Student	Unearned Income <sup>3</sup>	Unknown	Non-Reporting	
Chester	131	1,209	662	67%	254	21	90	1	431	2,799
Philadelphia	451	2,523	3,096	49%	808	129	506	1	2,235	9,749
<b>EASTERN REGION</b>	<b>582</b>	<b>3,732</b>	<b>3,758</b>	<b>53%</b>	<b>1,062</b>	<b>150</b>	<b>596</b>	<b>2</b>	<b>2,666</b>	<b>12,548</b>
Allentown	241	1,594	516	78%	543	65	301	0	810	4,070
Harrisburg	178	1,698	1,463	56%	285	36	167	3	971	4,801
Scranton	57	969	242	81%	135	18	185	0	317	1,923
Williamsport	79	456	185	74%	65	16	73	0	125	999
<b>CENTRAL REGION</b>	<b>555</b>	<b>4,717</b>	<b>2,406</b>	<b>69%</b>	<b>1,028</b>	<b>135</b>	<b>726</b>	<b>3</b>	<b>2,223</b>	<b>11,793</b>
Altoona	135	520	304	68%	106	23	188	1	253	1,530
Mercer	308	925	840	59%	403	33	283	2	384	3,178
Erie	147	580	258	74%	197	28	188	0	211	1,609
Pittsburgh	249	1,561	818	69%	628	65	293	0	905	4,519
<b>WESTERN REGION</b>	<b>839</b>	<b>3,586</b>	<b>2,220</b>	<b>67%</b>	<b>1,334</b>	<b>149</b>	<b>952</b>	<b>3</b>	<b>1,753</b>	<b>10,836</b>
<b>TOTAL</b>	<b>1,976</b>	<b>12,035</b>	<b>8,384</b>	<b>63%</b>	<b>3,424</b>	<b>434</b>	<b>2,274</b>	<b>8</b>	<b>6,642</b>	<b>35,177</b>

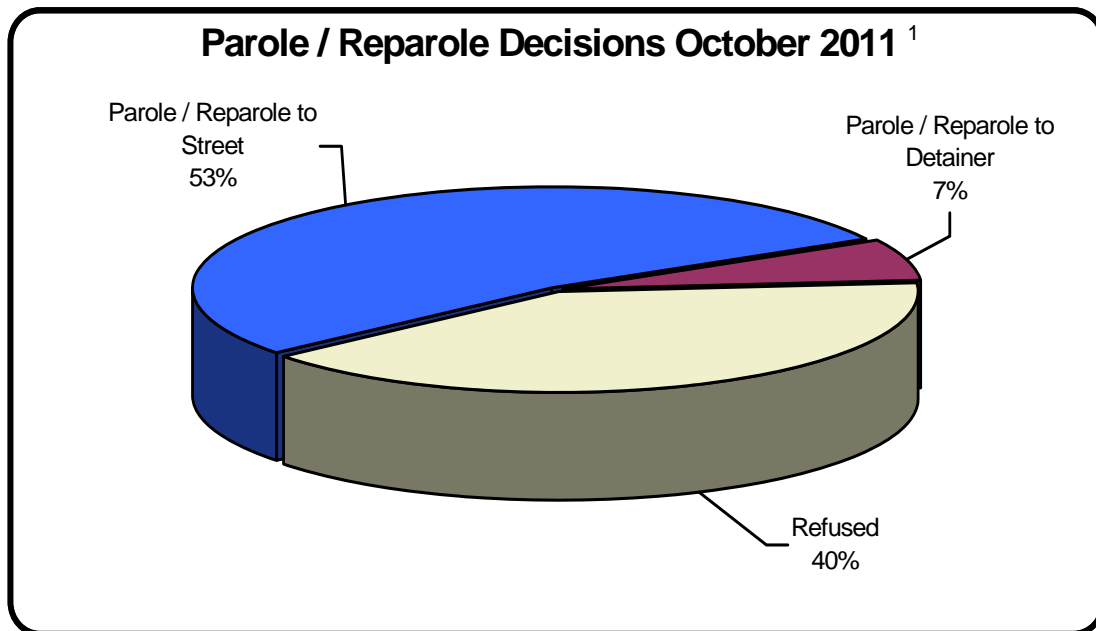
<sup>2</sup> Offender is unable to work due to a physical or mental disability, is a care provider, attends inpatient treatment, etc.

<sup>3</sup> Offender collects welfare assistance, workmen's compensation, monthly pension, Social Security, disability payments, etc.



**Table 7**  
**BOARD DECISIONS**  
**October 2011**

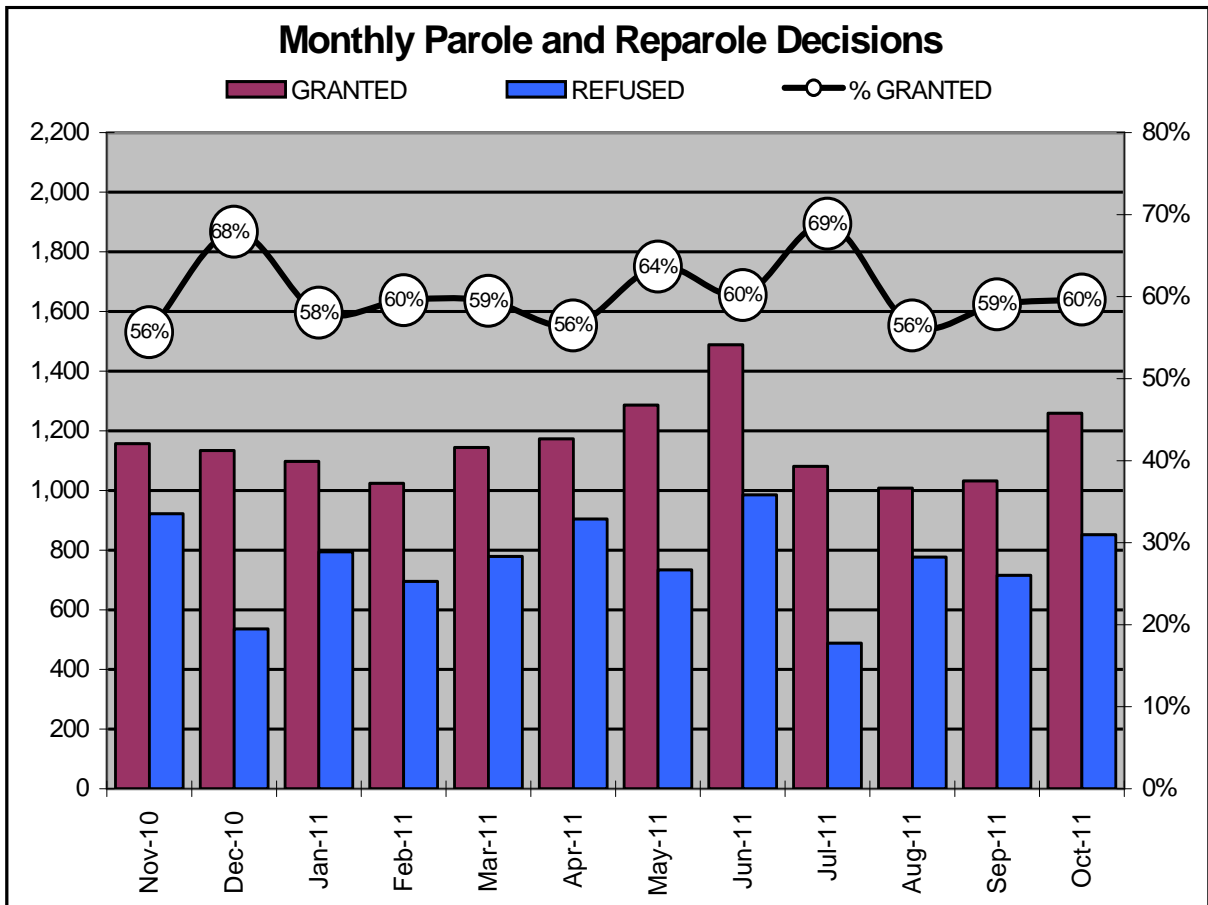
Type of Decision	Total
Parole / Reparole to Street	1,119
Parole / Reparole to Detainer	140
Refused	852
<b>Total Considered</b>	<b>2,111</b>
Recommitments as TPV	343
Recommitments as CPV	133
Recommitments as CPV and TPV	25
<b>Total Recommitments</b>	<b>501</b>
Refer to Prior Action	113
Other Decisions	655
<b>Total Decisions</b>	<b>3,380</b>



<sup>1</sup>The 60% does not necessarily reflect the overall parole rate, but rather is the calculated percent of parole decisions for the total number of Board Actions produced during this period of time.

**Table 8**  
**MONTHLY PAROLE and REPAROLE DECISIONS**  
**October 2011**

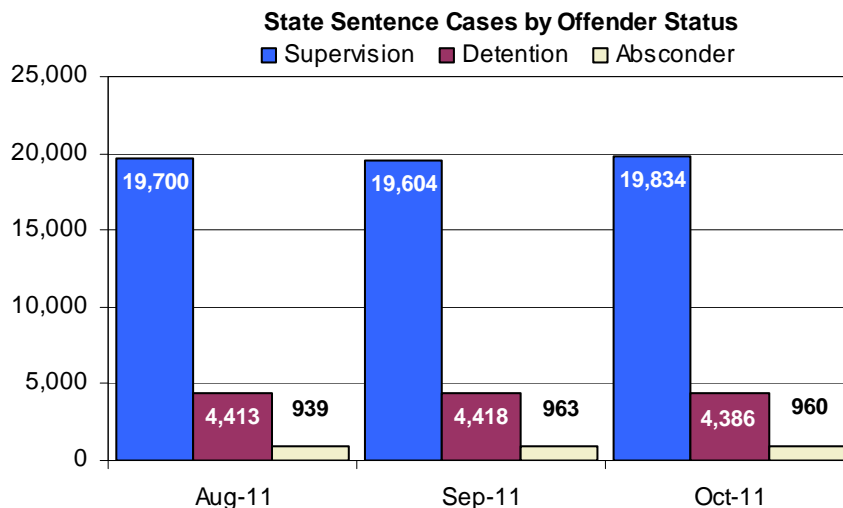
MONTH-YEAR	GRANTED	REFUSED	CONSIDERED	% GRANTED
Nov-10	1,157	922	2,079	56%
Dec-10	1,134	536	1,670	68%
Jan-11	1,098	794	1,892	58%
Feb-11	1,024	695	1,719	60%
Mar-11	1,144	779	1,923	59%
Apr-11	1,173	904	2,077	56%
May-11	1,286	734	2,020	64%
Jun-11	1,489	985	2,474	60%
Jul-11	1,081	488	1,569	69%
Aug-11	1,008	777	1,785	56%
Sep-11	1,032	716	1,748	59%
Oct-11	1,259	852	2,111	60%
<b>Monthly Average Over 12 Months</b>	<b>1,157</b>	<b>765</b>	<b>1,922</b>	<b>60%</b>





Offender Status - October 2011					
Status	State Prison	County Prison	County Sentence	Other States Cases	Total
Supervision	18,497	1,337	5,772	2,929	28,535
Absconder	921	39	181	0	1,141
Detention	4,112	274	973	142	5,501
<b>Total</b>	<b>23,530</b>	<b>1,650</b>	<b>6,926</b>	<b>3,071</b>	<b>35,177</b>

PBPP Monthly Population Profile						
Offender Status	May-11	Jun-11	Jul-11	Aug-11	Sep-11	Oct-11
<b>State sentence from state institution</b>	<b>22,992</b>	<b>23,128</b>	<b>23,155</b>	<b>23,385</b>	<b>23,325</b>	<b>23,530</b>
<i>Supervision</i>	18,040	18,165	18,205	18,340	18,280	18,497
<i>Absconder</i>	869	890	921	899	922	921
<i>Detention</i>	4,083	4,073	4,029	4,146	4,123	4,112
<b>State sentence from county prison</b>	<b>1,679</b>	<b>1,645</b>	<b>1,659</b>	<b>1,667</b>	<b>1,660</b>	<b>1,650</b>
<i>Supervision</i>	1,365	1,332	1,346	1,360	1,324	1,337
<i>Absconder</i>	37	37	40	40	41	39
<i>Detention</i>	277	276	273	267	295	274
<b>County sentence Prob &amp; Parole</b>	<b>6,840</b>	<b>6,851</b>	<b>6,802</b>	<b>6,847</b>	<b>6,872</b>	<b>6,926</b>
<i>Supervision</i>	5,715	5,733	5,711	5,731	5,720	5,772
<i>Absconder</i>	181	180	194	201	187	181
<i>Detention</i>	944	938	897	915	965	973
<b>Other state's sentence Prob &amp; Parole</b>	<b>3,154</b>	<b>3,121</b>	<b>3,105</b>	<b>3,083</b>	<b>3,079</b>	<b>3,071</b>
<i>Supervision</i>	2,996	2,983	2,958	2,943	2,932	2,929
<i>Absconder</i>	0	1	0	0	0	0
<i>Detention</i>	158	137	147	140	147	142
<b>PBPP Population end of month</b>	<b>34,665</b>	<b>34,745</b>	<b>34,721</b>	<b>34,982</b>	<b>34,936</b>	<b>35,177</b>



Monthly Count of Grant and Refuse Board Actions							
Type of Decision	County Prison			State Prison			All Grant/Refuse Board Actions
	Grant	Refuse	Total	Grant	Refuse	Total	
November 2010	63	35	98	1,094	887	1,981	2,079
December 2010	47	33	80	1,087	503	1,590	1,670
January 2011	48	11	59	1,050	783	1,833	1,892
February 2011	48	29	77	976	666	1,642	1,719
March 2011	54	32	86	1,090	747	1,837	1,923
April 2011	45	38	83	1,128	866	1,994	2,077
May 2011	56	23	79	1,230	711	1,942	2,020
June 2011	52	24	76	1,437	961	2,398	2,474
July 2011	48	17	65	1,033	471	1,504	1,569
August 2011	51	28	79	957	749	1,706	1,785
September 2011	35	20	55	997	696	1,693	1,748
October 2011	54	24	78	1,205	828	2,033	2,111
<b>2011 Total</b>	<b>491</b>	<b>246</b>	<b>737</b>	<b>11,103</b>	<b>7,478</b>	<b>18,582</b>	<b>19,318</b>

Additions and Deletions						
	May-11	Jun-11	Jul-11	Aug-11	Sep-11	Oct-11
<b>Total Additions</b>	<b>1,417</b>	<b>1,418</b>	<b>1,282</b>	<b>1,530</b>	<b>1,345</b>	<b>1,430</b>
State sentence - State Prison	953	991	831	1,022	857	953
State sentence - County Prison	59	44	71	73	54	63
County sentence Prob & Parole	244	247	231	302	274	284
Other state's sentence	161	136	149	133	160	130
<b>Total Deletions</b>	<b>1,177</b>	<b>1,337</b>	<b>1,287</b>	<b>1,254</b>	<b>1,374</b>	<b>1,193</b>
<b>State sentence - State Prison</b>	<b>707</b>	<b>812</b>	<b>759</b>	<b>749</b>	<b>880</b>	<b>729</b>
<i>Technical Violator</i>	201	257	239	232	281	239
<i>Convicted Violator</i>	155	174	175	138	161	142
<i>Successful Completion</i>	325	356	327	347	409	326
<i>Other Case Closure</i>	26	25	18	32	29	22
<b>State sentence - County Prison</b>	<b>31</b>	<b>75</b>	<b>57</b>	<b>57</b>	<b>52</b>	<b>58</b>
<i>Technical Violator</i>	6	12	15	11	8	13
<i>Convicted Violator</i>	5	11	7	11	10	10
<i>Successful Completion</i>	16	47	30	30	30	31
<i>Other Case Closure</i>	4	5	5	5	4	4
<b>County sentence Prob &amp; Parole</b>	<b>295</b>	<b>281</b>	<b>304</b>	<b>293</b>	<b>282</b>	<b>267</b>
<i>Technical Violator</i>	32	38	46	32	37	33
<i>Convicted Violator</i>	27	30	35	33	23	21
<i>Successful Completion</i>	146	136	155	134	158	134
<i>Other Case Closure</i>	90	77	68	94	64	79
<b>Other state's sentence</b>	<b>144</b>	<b>169</b>	<b>167</b>	<b>155</b>	<b>160</b>	<b>139</b>
<i>Technical Violator</i>	4	1	0	2	0	2
<i>Convicted Violator</i>	7	1	4	2	1	3
<i>Successful Completion</i>	51	59	84	56	72	60
<i>Other Case Closure</i>	82	108	79	95	87	74
<b>PBPP Population end of month</b>	<b>34,665</b>	<b>34,745</b>	<b>34,721</b>	<b>34,982</b>	<b>34,936</b>	<b>35,177</b>