

# COMMONWEALTH OF PENNSYLVANIA

## Board of Probation and Parole

### MONTHLY PROGRAM REPORT

July 2011



**Tom Corbett**  
Governor

Lloyd A. White  
Chairman

C. James Fox  
Member

Jeffrey R. Imboden  
Member

Benjamin A. Martinez  
Member

John R. Tuttle  
Member

Michael L. Green  
Member

Matthew T. Mangino, Esq  
Member

Catherine C. McVey  
Member

Judith E. Viglione  
Member

Carol Lavery  
Victim Advocate

**PBPP**  
AN EQUAL OPPORTUNITY EMPLOYER

Published August 9, 2011 by the PBPP Statistical Reporting and Evidence-Based Program Evaluation Office

Copyright © 2011 by the Pennsylvania Board of Probation and Parole. All rights reserved.

**Table 1  
WORKLOAD AND POPULATION CHANGES BY REGION / DISTRICT  
July 2011**

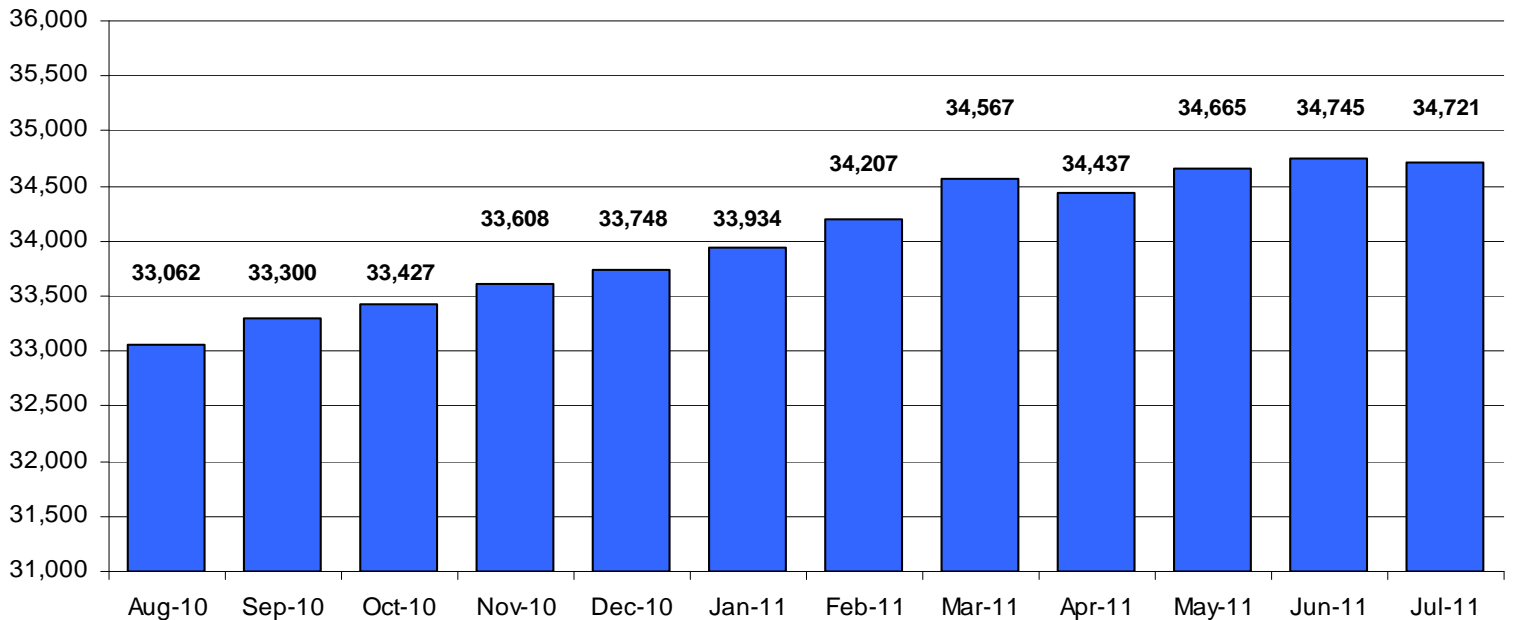
REGION / DISTRICT	Beginning Fiscal Yr <sup>1</sup> July 2011	Current Month Population	Fiscal YTD Index	Additions	Deletions		Number of Agents <sup>2</sup>	Average Workload	Total Workload
					Recommits/ Revocations	Other Deletions			
CHESTER	2,782	2,792	100	85	25	53	37	126	4,667
PHILADELPHIA	9,561	9,585	100	341	132	195	129	119	15,376
<b>EASTERN REGION</b>	<b>12,343</b>	<b>12,377</b>	<b>100</b>	<b>426</b>	<b>157</b>	<b>248</b>	<b>166</b>	<b>121</b>	<b>20,043</b>
ALLENTOWN	4,051	4,010	99	182	135	75	52	132	6,883
HARRISBURG	4,687	4,699	100	164	61	79	60	138	8,253
SCRANTON	1,876	1,908	102	99	25	37	28	125	3,498
WILLIAMSPORT	1,000	995	100	25	11	25	15	124	1,856
<b>CENTRAL REGION</b>	<b>11,614</b>	<b>11,612</b>	<b>100</b>	<b>470</b>	<b>232</b>	<b>216</b>	<b>155</b>	<b>132</b>	<b>20,491</b>
ALTOONA	1,520	1,512	99	44	14	37	20	146	2,922
MERCER	3,230	3,186	99	115	46	114	42	141	5,901
ERIE	1,544	1,557	101	54	11	40	23	121	2,777
PITTSBURGH	4,494	4,477	100	173	61	111	65	130	8,471
<b>WESTERN REGION</b>	<b>10,788</b>	<b>10,732</b>	<b>99</b>	<b>386</b>	<b>132</b>	<b>302</b>	<b>150</b>	<b>134</b>	<b>20,070</b>
<b>TOTAL Supervised</b>	<b>34,745</b>	<b>34,721</b>	<b>100</b>	<b>1,282</b>	<b>521</b>	<b>766</b>	<b>471</b>	<b>129</b>	<b>60,604</b>

<sup>1</sup> effective June 30

<sup>2</sup> Filled agent positions

PA Offenders in Other States	<b>3,116</b>	<b>3,136</b>	<b>101</b>	<b>62</b>	<b>4</b>	<b>57</b>
------------------------------	--------------	--------------	------------	-----------	----------	-----------

**Population - Retrospective Year View**

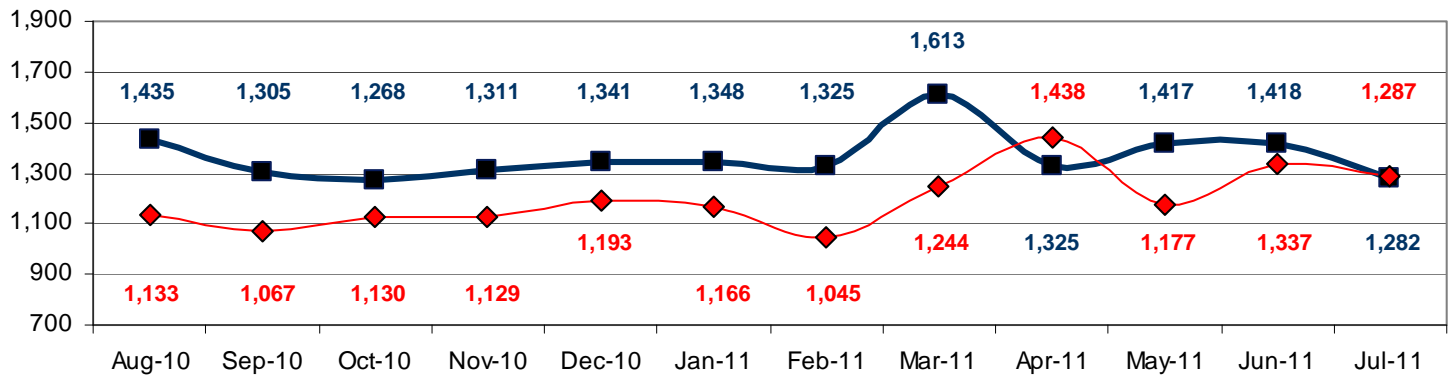


**Table 2  
SUPERVISED POPULATION ADDITIONS AND DELETIONS  
July 2011**

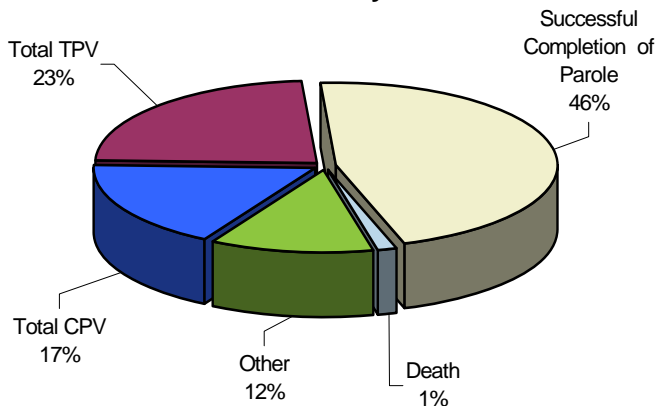
Population Additions and Deletions	Parole	Reparole	Special County Probation	Special County Parole	Other States' Probation	Other States' Parole	Monthly Total	Fiscal YTD Total
<b>ADDITIONS</b>	732	170	170	61	124	25	1,282	1,282
<b>DELETIONS-RECOMMITMENTS</b>								
<i>Convicted Parole Violator</i>								
State Corrections	142	33	3	0	0	0	178	178
County Corrections	5	2	28	4	0	0	39	39
Other States	0	0	0	0	2	2	4	4
<b>Total Convicted Parole Violator</b>	147	35	31	4	2	2	221	221
<i>Technical Parole Violator</i>								
State Corrections	179	60	5	0	0	0	244	244
County Corrections	12	3	27	14	0	0	56	56
Other States	0	0	0	0	0	0	0	0
<b>Total Technical Parole Violator</b>	191	63	32	14	0	0	300	300
<b>TOTAL RECOMMITMENTS</b>	338	98	63	18	2	2	521	521
Deletion Successful Completion	306	51	115	40	70	14	596	596
Deletion Death	8	2	6	1	0	0	17	17
Deletion Other	8	5	55	6	69	10	153	153
<b>TOTAL DELETIONS</b>	660	156	239	65	141	26	1,287	1,287

**Population Additions & Deletions-Retrospective Year View**

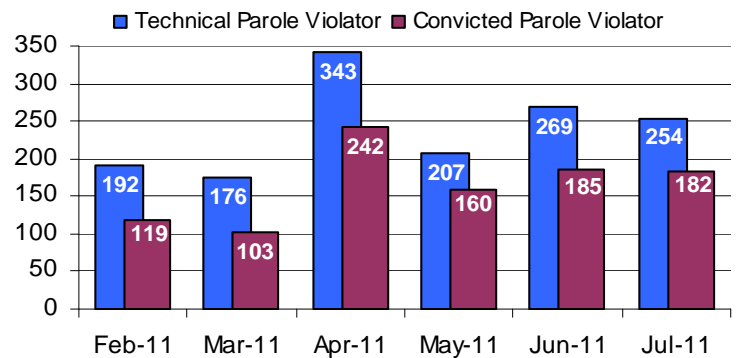
■ ADDITIONS ◆ DELETIONS



**Total Deletions July 2011**



**State Sentence Parole Revocations\***



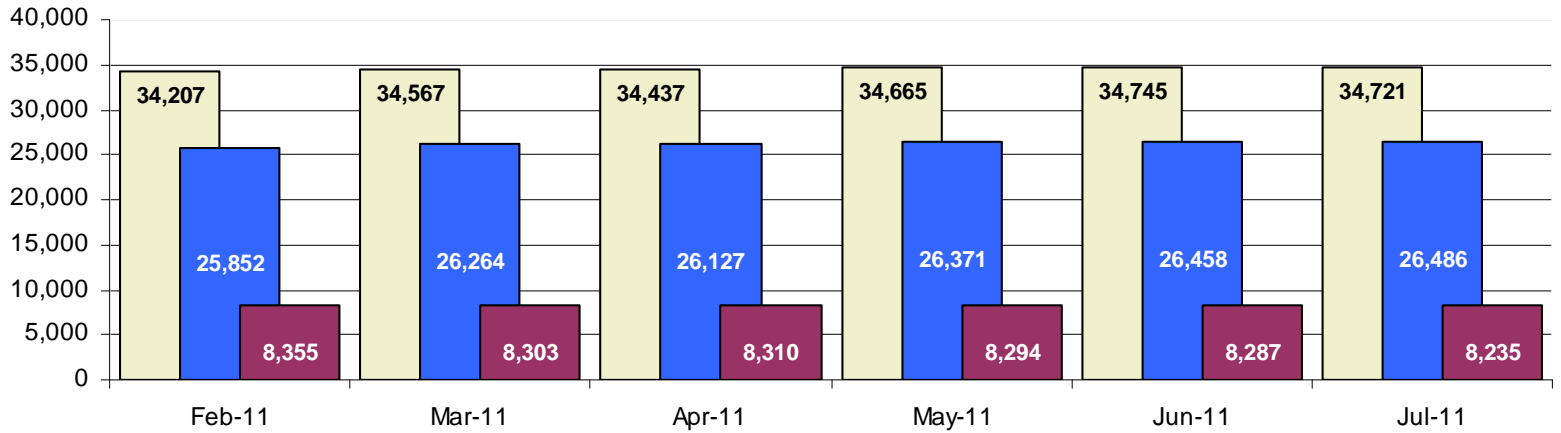
\* These revocations represent field case closure records and are dependent on case processing.

**Table 3**  
**SUPERVISED POPULATION BY ORIGINATING JURISDICTION and REGION / DISTRICT**  
**July 2011**

Region / District	PA Parole State Sentence				County		Other States		Total Population
	State Prisons	Boot Camp	County Prisons	Subtotal	Special Probation	Special Parole	Probation	Parole	
Chester	1,607	48	225	1,880	544	9	301	58	2,792
Philadelphia	7,027	178	340	7,545	1,236	8	656	140	9,585
<b>Eastern Region</b>	<b>8,634</b>	<b>226</b>	<b>565</b>	<b>9,425</b>	<b>1,780</b>	<b>17</b>	<b>957</b>	<b>198</b>	<b>12,377</b>
Allentown	2,624	138	364	3,126	399	3	394	88	4,010
Harrisburg	3,635	201	143	3,979	373	5	286	56	4,699
Scranton	1,141	12	221	1,374	195	1	269	69	1,908
Williamsport	691	18	44	753	122	6	93	21	995
<b>Central Region</b>	<b>8,091</b>	<b>369</b>	<b>772</b>	<b>9,232</b>	<b>1,089</b>	<b>15</b>	<b>1,042</b>	<b>234</b>	<b>11,612</b>
Altoona	877	19	70	966	365	75	79	27	1,512
Mercer	748	21	27	796	1,397	859	106	28	3,186
Erie	1,035	35	151	1,221	191	56	70	19	1,557
Pittsburgh	2,914	186	74	3,174	880	78	279	66	4,477
<b>Western Region</b>	<b>5,574</b>	<b>261</b>	<b>322</b>	<b>6,157</b>	<b>2,833</b>	<b>1,068</b>	<b>534</b>	<b>140</b>	<b>10,732</b>
<b>Total</b>	<b>22,299</b>	<b>856</b>	<b>1,659</b>	<b>24,814</b>	<b>5,702</b>	<b>1,100</b>	<b>2,533</b>	<b>572</b>	<b>34,721</b>
<b>Percent of Total</b>	<b>64%</b>	<b>2%</b>	<b>5%</b>	<b>71%</b>	<b>17%</b>	<b>3%</b>	<b>7%</b>	<b>2%</b>	<b>100%</b>

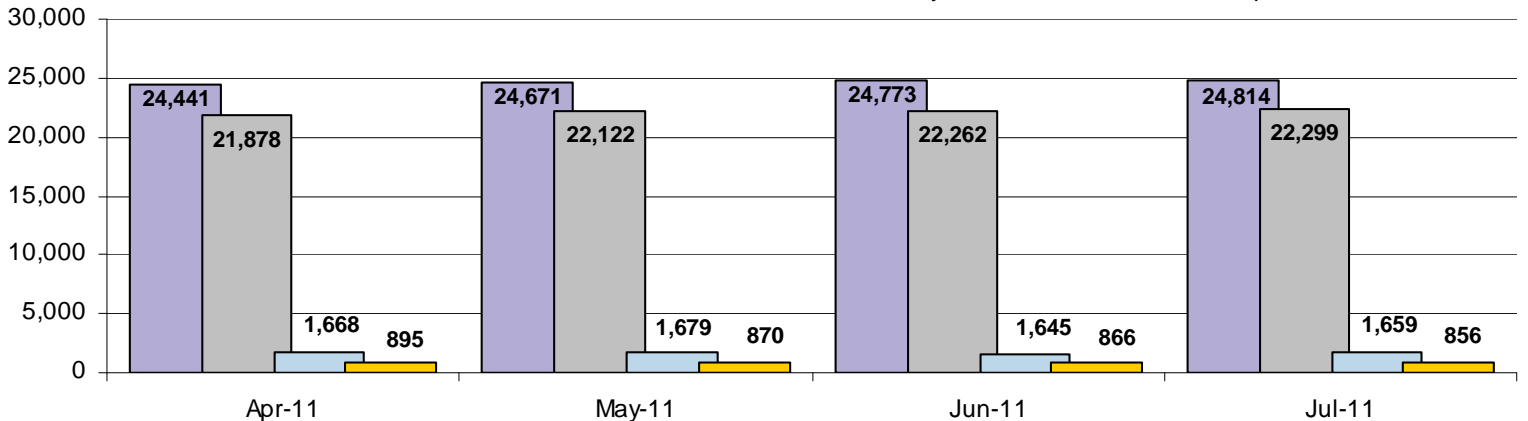
**Parole and Probation Supervised Populations**

■ Total Population 
 ■ Parole 
 ■ Probation



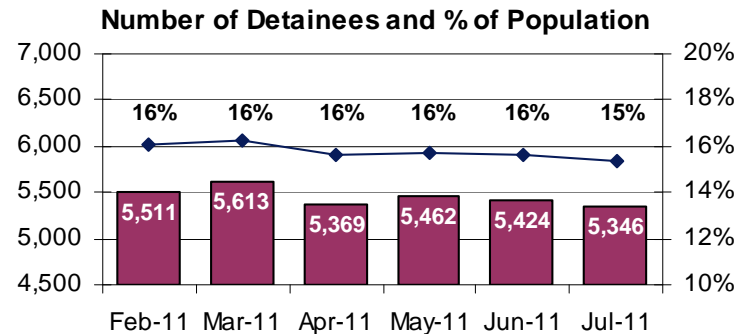
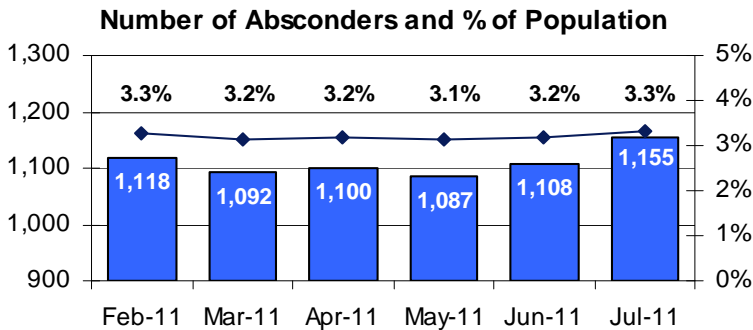
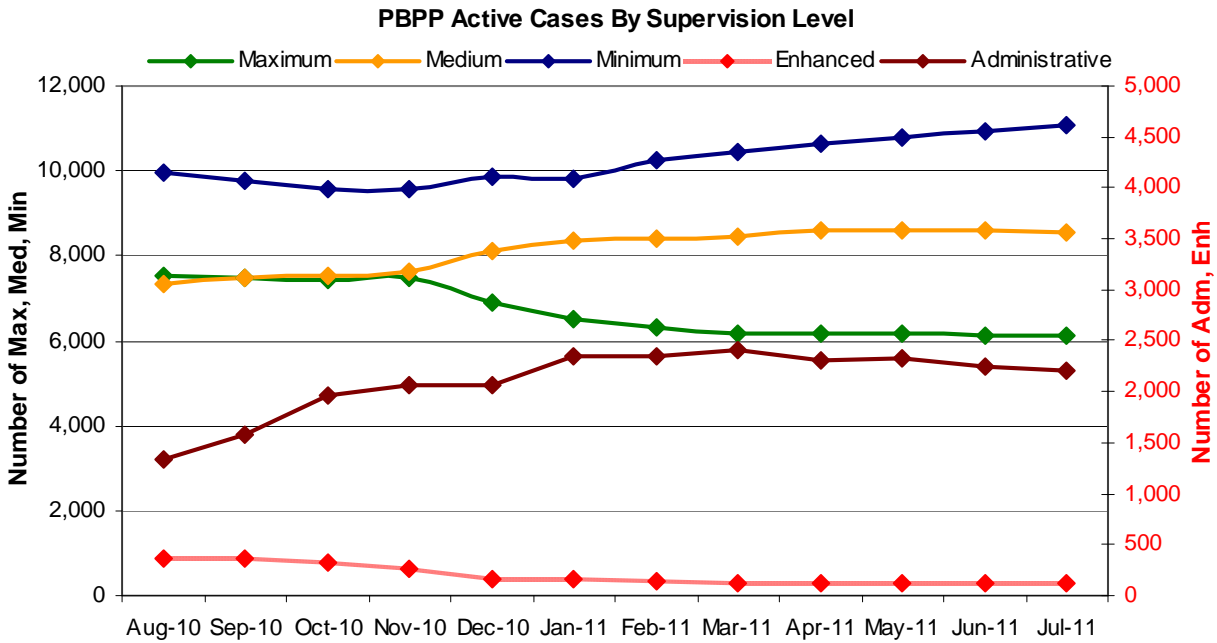
**Supervised State Sentence Cases**

■ Total State Sentence Cases 
 ■ State Prison Cases 
 ■ County Prison Cases 
 ■ Boot Camp Cases



**Table 4**  
**SUPERVISED POPULATION BY GRADE OF SUPERVISION and REGION / DISTRICT**  
**July 2011**

Region / District	Reporting							Non-Reporting		Total Population
	Enhanced	Maximum	Medium	Minimum	ADM / SPC	Not Classified	Subtotal	Absconder	Detainees	
Chester	5	279	719	974	367	13	2,357	56	379	2,792
Philadelphia	8	1,607	1,987	3,315	400	54	7,371	451	1,763	9,585
<b>Eastern Region</b>	<b>13</b>	<b>1,886</b>	<b>2,706</b>	<b>4,289</b>	<b>767</b>	<b>67</b>	<b>9,728</b>	<b>507</b>	<b>2,142</b>	<b>12,377</b>
Allentown	19	839	844	1,313	235	19	3,269	169	572	4,010
Harrisburg	14	830	1,188	1,296	393	29	3,750	163	786	4,699
Scranton	21	304	423	684	137	16	1,585	44	279	1,908
Williamsport	1	98	310	322	126	0	857	12	126	995
<b>Central Region</b>	<b>55</b>	<b>2,071</b>	<b>2,765</b>	<b>3,615</b>	<b>891</b>	<b>64</b>	<b>9,461</b>	<b>388</b>	<b>1,763</b>	<b>11,612</b>
Altoona	1	302	488	397	91	0	1,279	18	215	1,512
Mercer	3	312	899	1,405	178	1	2,798	59	329	3,186
Erie	9	233	464	522	139	4	1,371	44	142	1,557
Pittsburgh	33	1,326	1,238	844	137	5	3,583	139	755	4,477
<b>Western Region</b>	<b>46</b>	<b>2,173</b>	<b>3,089</b>	<b>3,168</b>	<b>545</b>	<b>10</b>	<b>9,031</b>	<b>260</b>	<b>1,441</b>	<b>10,732</b>
<b>Total</b>	<b>114</b>	<b>6,130</b>	<b>8,560</b>	<b>11,072</b>	<b>2,203</b>	<b>141</b>	<b>28,220</b>	<b>1,155</b>	<b>5,346</b>	<b>34,721</b>
<b>Percent of Total</b>	<b>&lt;1%</b>	<b>18%</b>	<b>25%</b>	<b>32%</b>	<b>6%</b>	<b>1%</b>	<b>82%</b>	<b>3%</b>	<b>15%</b>	<b>100%</b>



**Table 5**  
**SUPERVISED POPULATION BY GENDER, RACE and REGION / DISTRICT**  
**July 2011**

Region / District	Male					Female					% Male	Total Population
	White	Black	Hispanic	Other <sup>1</sup>	Total	White	Black	Hispanic	Other <sup>1</sup>	Total		
Chester	1,136	1,255	114	29	2,534	175	74	3	6	258	91%	2,792
Philadelphia	1,265	6,342	1,168	150	8,925	182	395	75	8	660	93%	9,585
<b>EASTERN REGION</b>	<b>2,401</b>	<b>7,597</b>	<b>1,282</b>	<b>179</b>	<b>11,459</b>	<b>357</b>	<b>469</b>	<b>78</b>	<b>14</b>	<b>918</b>	<b>93%</b>	<b>12,377</b>
Allentown	1,833	793	927	43	3,596	261	78	64	11	414	90%	4,010
Harrisburg	2,092	1,483	519	43	4,137	370	138	45	9	562	88%	4,699
Scranton	1,182	360	104	20	1,666	203	29	8	2	242	87%	1,908
Williamsport	691	86	12	2	791	177	21	4	2	204	79%	995
<b>CENTRAL REGION</b>	<b>5,798</b>	<b>2,722</b>	<b>1,562</b>	<b>108</b>	<b>10,190</b>	<b>1,011</b>	<b>266</b>	<b>121</b>	<b>24</b>	<b>1,422</b>	<b>88%</b>	<b>11,612</b>
Altoona	1,058	138	7	15	1,218	277	15	1	1	294	81%	1,512
Mercer	2,126	363	3	10	2,502	607	71	2	4	684	79%	3,186
Erie	915	341	57	8	1,321	186	44	3	3	236	85%	1,557
Pittsburgh	1,902	1,997	47	16	3,962	355	151	4	5	515	88%	4,477
<b>WESTERN REGION</b>	<b>6,001</b>	<b>2,839</b>	<b>114</b>	<b>49</b>	<b>9,003</b>	<b>1,425</b>	<b>281</b>	<b>10</b>	<b>13</b>	<b>1,729</b>	<b>84%</b>	<b>10,732</b>
<b>TOTAL</b>	<b>14,200</b>	<b>13,158</b>	<b>2,958</b>	<b>336</b>	<b>30,652</b>	<b>2,793</b>	<b>1,016</b>	<b>209</b>	<b>51</b>	<b>4,069</b>	<b>88%</b>	<b>34,721</b>

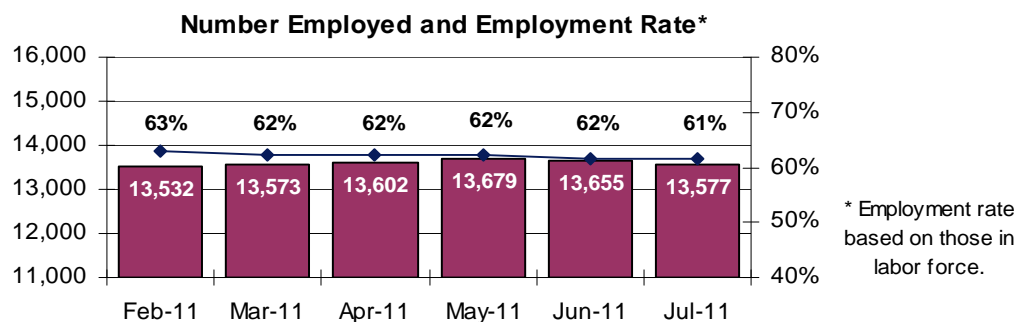
<sup>1</sup> "Other" includes Asian, Pacific Islander, Indian (Native American and Native Alaskan), and cases not elsewhere classified.

**Table 6**  
**SUPERVISED POPULATION BY EMPLOYMENT STATUS and REGION / DISTRICT**  
**July 2011**

Region / District	In Labor Force				Not In Labor Force					Total Population
	Employed Part Time	Employed Full Time	Unemployed	Employment Rate	Unable to Work <sup>2</sup>	Student	Unearned Income <sup>3</sup>	Unknown	Non-Reporting	
Chester	133	1,186	689	66%	234	25	88	2	435	2,792
Philadelphia	471	2,492	2,910	50%	845	134	518	1	2,214	9,585
<b>EASTERN REGION</b>	<b>604</b>	<b>3,678</b>	<b>3,599</b>	<b>54%</b>	<b>1,079</b>	<b>159</b>	<b>606</b>	<b>3</b>	<b>2,649</b>	<b>12,377</b>
Allentown	257	1,548	512	78%	605	62	285	0	741	4,010
Harrisburg	171	1,674	1,426	56%	279	29	166	5	949	4,699
Scranton	53	877	358	72%	120	19	157	1	323	1,908
Williamsport	82	431	192	73%	66	16	70	0	138	995
<b>CENTRAL REGION</b>	<b>563</b>	<b>4,530</b>	<b>2,488</b>	<b>67%</b>	<b>1,070</b>	<b>126</b>	<b>678</b>	<b>6</b>	<b>2,151</b>	<b>11,612</b>
Altoona	147	503	308	68%	105	25	190	1	233	1,512
Mercer	283	897	907	57%	409	27	274	1	388	3,186
Erie	126	523	303	68%	205	27	183	4	186	1,557
Pittsburgh	240	1,483	916	65%	636	60	248	0	894	4,477
<b>WESTERN REGION</b>	<b>796</b>	<b>3,406</b>	<b>2,434</b>	<b>63%</b>	<b>1,355</b>	<b>139</b>	<b>895</b>	<b>6</b>	<b>1,701</b>	<b>10,732</b>
<b>TOTAL</b>	<b>1,963</b>	<b>11,614</b>	<b>8,521</b>	<b>61%</b>	<b>3,504</b>	<b>424</b>	<b>2,179</b>	<b>15</b>	<b>6,501</b>	<b>34,721</b>

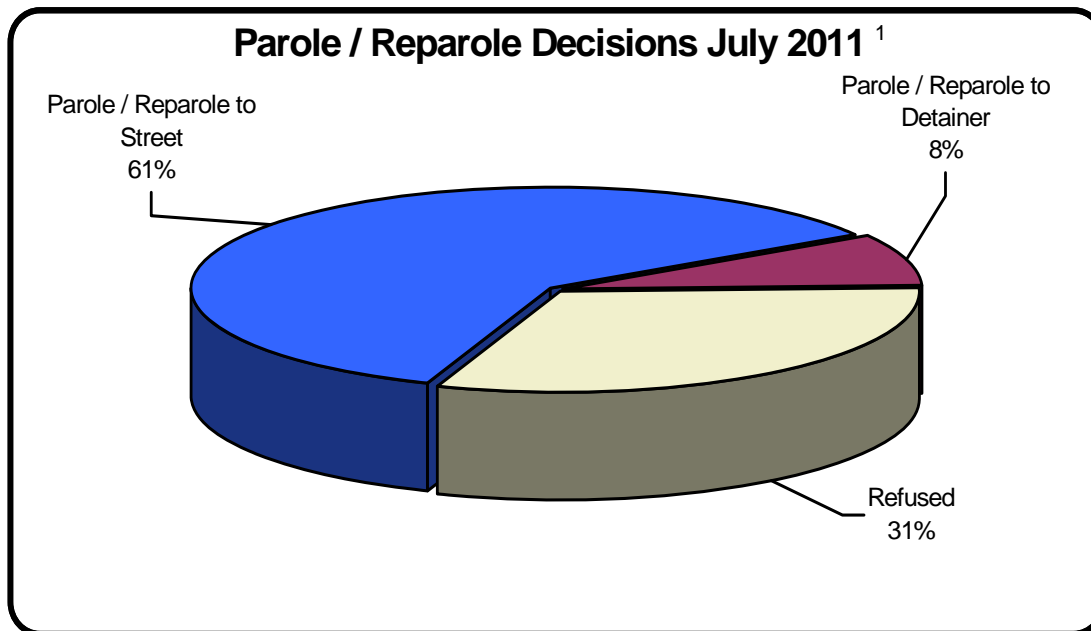
<sup>2</sup> Offender is unable to work due to a physical or mental disability, is a care provider, attends inpatient treatment, etc.

<sup>3</sup> Offender collects welfare assistance, workmen's compensation, monthly pension, Social Security, disability payments, etc.



**Table 7**  
**BOARD DECISIONS**  
**July 2011**

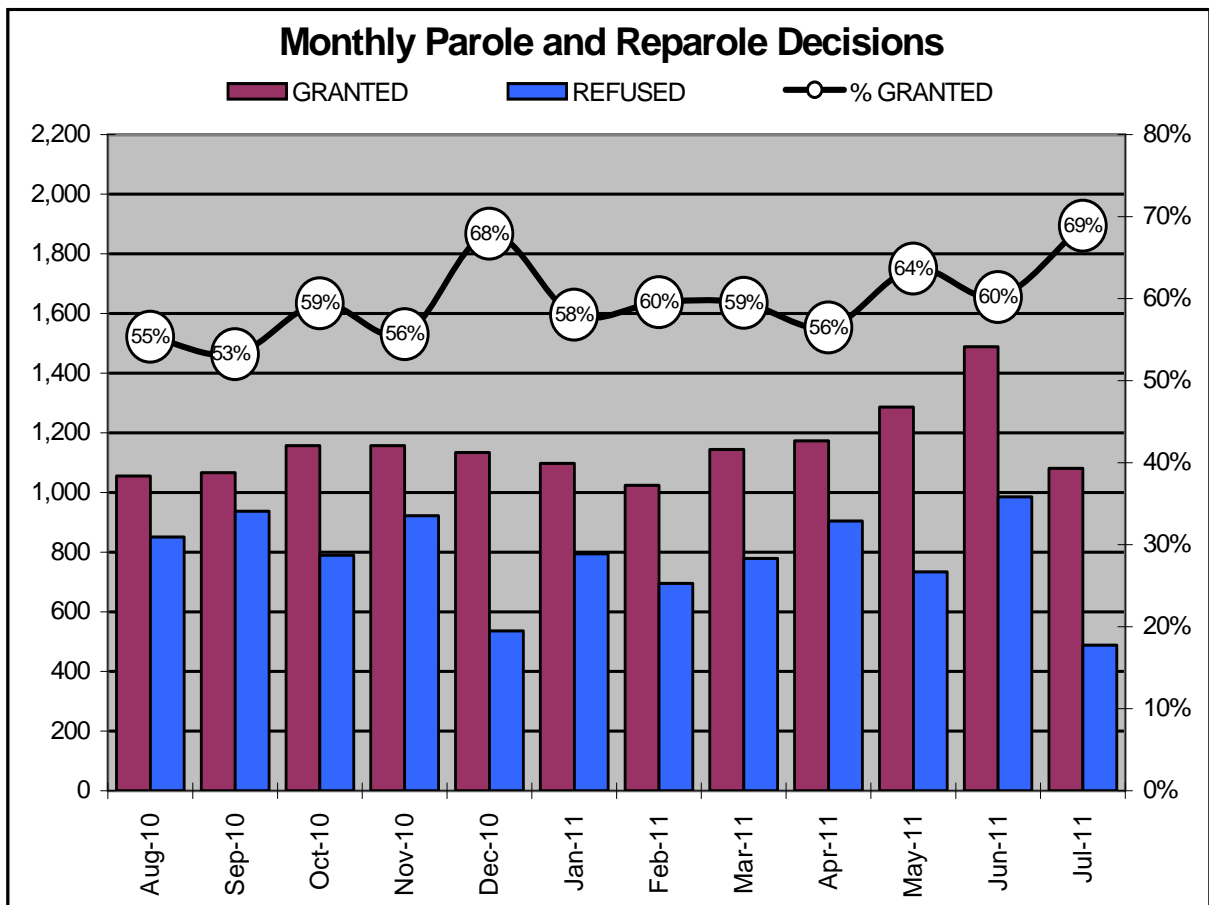
Type of Decision	Total
Parole / Reparole to Street	949
Parole / Reparole to Detainer	132
Refused	488
<b>Total Considered</b>	<b>1,569</b>
Recommitments as TPV	323
Recommitments as CPV	129
Recommitments as CPV and TPV	29
<b>Total Recommitments</b>	<b>481</b>
Refer to Prior Action	104
Other Decisions	694
<b>Total Decisions</b>	<b>2,848</b>



<sup>1</sup> The 69% does not necessarily reflect the overall parole rate, but rather is the calculated percent of parole decisions for the total number of Board Actions produced during this period of time.

**Table 8**  
**MONTHLY PAROLE and REPAROLE DECISIONS**  
**July 2011**

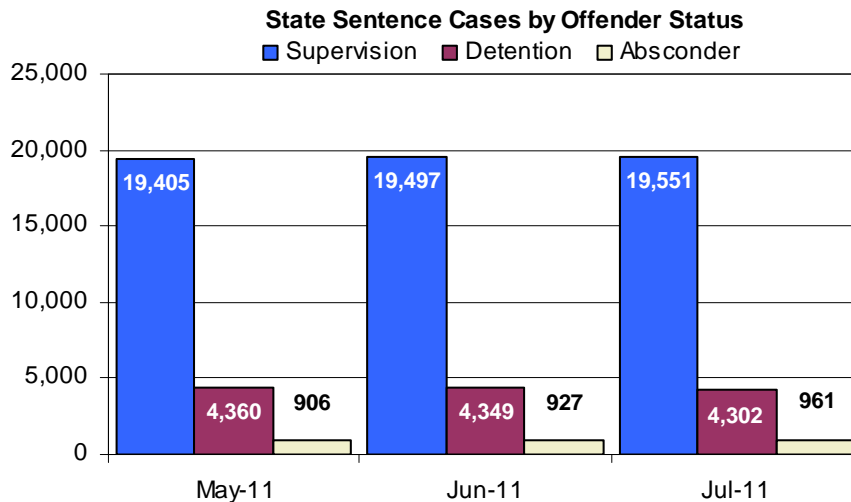
MONTH-YEAR	GRANTED	REFUSED	CONSIDERED	% GRANTED
Aug-10	1,055	851	1,906	55%
Sep-10	1,066	937	2,003	53%
Oct-10	1,157	790	1,947	59%
Nov-10	1,157	922	2,079	56%
Dec-10	1,134	536	1,670	68%
Jan-11	1,098	794	1,892	58%
Feb-11	1,024	695	1,719	60%
Mar-11	1,144	779	1,923	59%
Apr-11	1,173	904	2,077	56%
May-11	1,286	734	2,020	64%
Jun-11	1,489	985	2,474	60%
Jul-11	1,081	488	1,569	69%
<b>Monthly Average Over 12 Months</b>	<b>1,155</b>	<b>785</b>	<b>1,940</b>	<b>60%</b>





Offender Status - July 2011					
Status	State Prison	County Prison	County Sentence	Other States Cases	Total
Supervision	18,205	1,346	5,711	2,958	28,220
Absconder	921	40	194	0	1,155
Detention	4,029	273	897	147	5,346
<b>Total</b>	<b>23,155</b>	<b>1,659</b>	<b>6,802</b>	<b>3,105</b>	<b>34,721</b>

PBPP Monthly Population Profile						
Offender Status	Feb-11	Mar-11	Apr-11	May-11	Jun-11	Jul-11
<b>State sentence from state institution</b>	<b>22,522</b>	<b>22,925</b>	<b>22,773</b>	<b>22,992</b>	<b>23,128</b>	<b>23,155</b>
<i>Supervision</i>	17,435	17,773	17,858	18,040	18,165	18,205
<i>Absconder</i>	882	862	878	869	890	921
<i>Detention</i>	4,205	4,290	4,037	4,083	4,073	4,029
<b>State sentence from county prison</b>	<b>1,624</b>	<b>1,657</b>	<b>1,668</b>	<b>1,679</b>	<b>1,645</b>	<b>1,659</b>
<i>Supervision</i>	1,299	1,333	1,354	1,365	1,332	1,346
<i>Absconder</i>	43	38	35	37	37	40
<i>Detention</i>	282	286	279	277	276	273
<b>County sentence Prob &amp; Parole</b>	<b>6,896</b>	<b>6,822</b>	<b>6,857</b>	<b>6,840</b>	<b>6,851</b>	<b>6,802</b>
<i>Supervision</i>	5,826	5,744	5,777	5,715	5,733	5,711
<i>Absconder</i>	193	192	187	181	180	194
<i>Detention</i>	877	886	893	944	938	897
<b>Other state's sentence Prob &amp; Parole</b>	<b>3,165</b>	<b>3,163</b>	<b>3,139</b>	<b>3,154</b>	<b>3,121</b>	<b>3,105</b>
<i>Supervision</i>	3,018	3,012	2,979	2,996	2,983	2,958
<i>Absconder</i>	0	0	0	0	1	0
<i>Detention</i>	147	151	160	158	137	147
<b>PBPP Population end of month</b>	<b>34,207</b>	<b>34,567</b>	<b>34,437</b>	<b>34,665</b>	<b>34,745</b>	<b>34,721</b>



**PBPP Population Breakdown By Place of Incarceration/Jurisdiction – July 2011**

<b>Monthly Count of Grant and Refuse Board Actions</b>							
Type of Decision	County Prison			State Prison			All Grant/Refuse Board Actions
	Grant	Refuse	Total	Grant	Refuse	Total	
August 2010	62	32	94	993	819	1,812	<b>1,906</b>
September 2010	56	32	88	1,010	905	1,915	<b>2,003</b>
October 2010	56	22	78	1,101	768	1,869	<b>1,947</b>
November 2010	63	35	98	1,094	887	1,981	<b>2,079</b>
December 2010	47	33	80	1,087	503	1,590	<b>1,670</b>
January 2011	48	11	59	1,050	783	1,833	<b>1,892</b>
February 2011	48	29	77	976	666	1,642	<b>1,719</b>
March 2011	54	32	86	1,090	747	1,837	<b>1,923</b>
April 2011	45	38	83	1,128	866	1,994	<b>2,077</b>
May 2011	56	23	79	1,230	711	1,942	<b>2,020</b>
June 2011	52	24	76	1,437	961	2,398	<b>2,474</b>
July 2011	48	17	65	1,033	471	1,504	<b>1,569</b>
<b>2011 Total</b>	<b>351</b>	<b>174</b>	<b>525</b>	<b>7,944</b>	<b>5,205</b>	<b>13,150</b>	<b>13,674</b>

<b>Additions and Deletions</b>						
	Feb-11	Mar-11	Apr-11	May-11	Jun-11	Jul-11
<b>Total Additions</b>	<b>1,325</b>	<b>1,613</b>	<b>1,325</b>	<b>1,417</b>	<b>1,418</b>	<b>1,282</b>
State sentence - State Prison	838	1,065	845	953	991	831
State sentence - County Prison	69	90	80	59	44	71
County sentence Prob & Parole	282	289	268	244	247	231
Other state's sentence	136	169	132	161	136	149
<b>Total Deletions</b>	<b>1,045</b>	<b>1,244</b>	<b>1,438</b>	<b>1,177</b>	<b>1,337</b>	<b>1,287</b>
<b>State sentence - State Prison</b>	<b>601</b>	<b>643</b>	<b>962</b>	<b>707</b>	<b>812</b>	<b>759</b>
<i>Technical Violator</i>	179	165	324	201	257	239
<i>Convicted Violator</i>	115	95	230	155	174	175
<i>Successful Completion</i>	283	357	379	325	356	327
<i>Other Case Closure</i>	24	26	29	26	25	18
<b>State sentence - County Prison</b>	<b>56</b>	<b>52</b>	<b>66</b>	<b>31</b>	<b>75</b>	<b>57</b>
<i>Technical Violator</i>	13	11	19	6	12	15
<i>Convicted Violator</i>	4	8	12	5	11	7
<i>Successful Completion</i>	36	30	33	16	47	30
<i>Other Case Closure</i>	3	3	2	4	5	5
<b>County sentence Prob &amp; Parole</b>	<b>239</b>	<b>376</b>	<b>253</b>	<b>295</b>	<b>281</b>	<b>304</b>
<i>Technical Violator</i>	28	51	29	32	38	46
<i>Convicted Violator</i>	22	35	30	27	30	35
<i>Successful Completion</i>	118	200	129	146	136	155
<i>Other Case Closure</i>	71	90	65	90	77	68
<b>Other state's sentence</b>	<b>149</b>	<b>173</b>	<b>157</b>	<b>144</b>	<b>169</b>	<b>167</b>
<i>Technical Violator</i>	0	3	3	4	1	0
<i>Convicted Violator</i>	1	2	2	7	1	4
<i>Successful Completion</i>	63	72	69	51	59	84
<i>Other Case Closure</i>	85	96	83	82	108	79
<b>PBPP Population end of month</b>	<b>34,207</b>	<b>34,567</b>	<b>34,437</b>	<b>34,665</b>	<b>34,745</b>	<b>34,721</b>