

COMMONWEALTH OF PENNSYLVANIA

Board of Probation and Parole

MONTHLY PROGRAM REPORT

January 2012



Tom Corbett
Governor

Lloyd A. White
Chairman

C. James Fox
Member

Jeffrey R. Imboden
Member

Craig R. McKay
Member

John R. Tuttle
Member

Michael L. Green
Member

Matthew T. Mangino, Esq
Member

Michael C. Potteiger
Member

Judith E. Viglione
Member

Carol Lavery
Victim Advocate

PBPP
AN EQUAL OPPORTUNITY EMPLOYER

Published February 8, 2012 by the PBPP Statistical Reporting and Evidence-Based Program Evaluation Office

Copyright © 2012 Commonwealth of Pennsylvania, Board of Probation and Parole. All rights reserved.

**Table 1
WORKLOAD AND POPULATION CHANGES BY REGION / DISTRICT
January 2012**

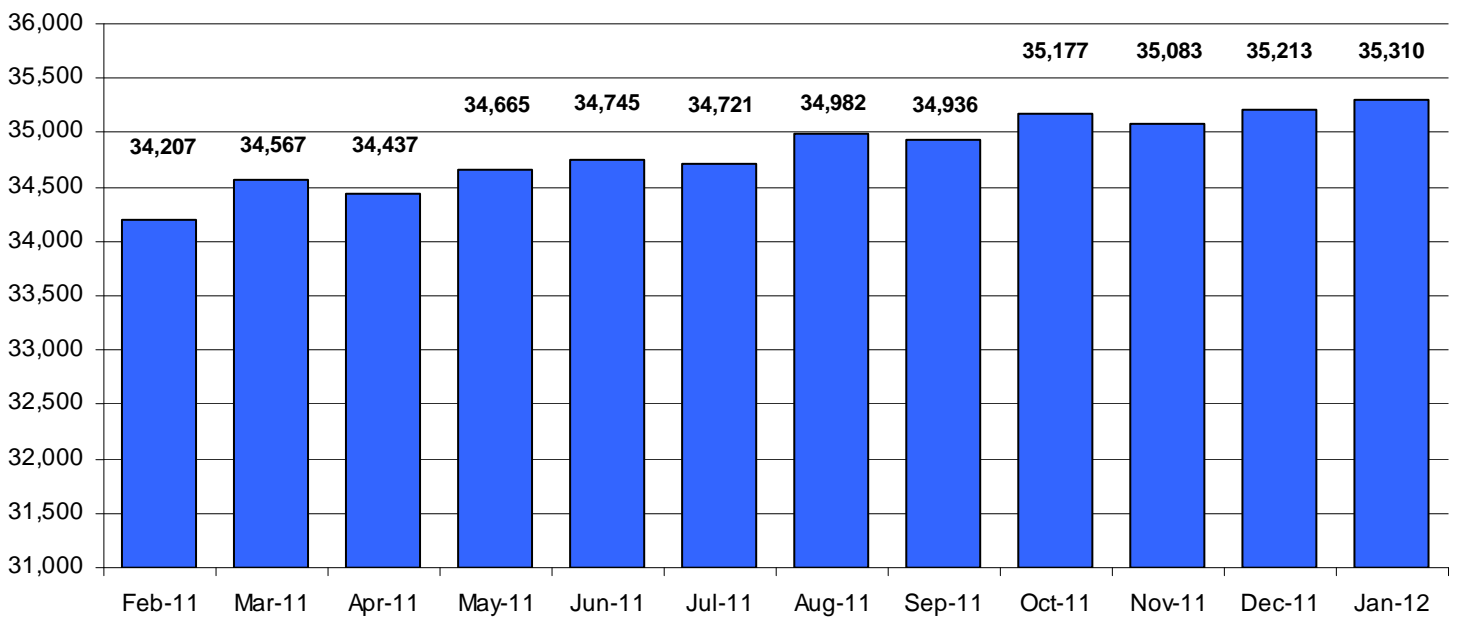
REGION / DISTRICT	Beginning Fiscal Yr ¹ July 2011	Current Month Population	Fiscal YTD Index	Additions	Deletions		Number of Agents ²	Average Workload	Total Workload
					Recommits/ Revocations	Other Deletions			
CHESTER	2,782	2,835	102	101	21	78	38	124	4,707
PHILADELPHIA	9,561	9,860	103	387	102	237	122	128	15,620
EASTERN REGION	12,343	12,695	103	488	123	315	160	127	20,327
ALLENTOWN	4,051	4,068	100	196	48	98	49	142	6,950
HARRISBURG	4,687	4,712	101	162	134	101	57	145	8,249
SCRANTON	1,876	1,910	102	86	32	47	29	121	3,511
WILLIAMSPORT	1,000	1,001	100	27	21	21	15	126	1,897
CENTRAL REGION	11,614	11,691	101	471	235	267	150	137	20,607
ALTOONA	1,520	1,524	100	42	24	28	24	121	2,897
MERCER	3,230	3,174	98	145	37	71	39	157	6,107
ERIE	1,544	1,663	108	92	27	13	22	135	2,979
PITTSBURGH	4,494	4,563	102	183	77	118	68	127	8,606
WESTERN REGION	10,788	10,924	101	462	165	230	153	135	20,590
TOTAL Supervised	34,745	35,310	102	1,421	523	812	463	133	61,524

¹ effective June 30

² Filled agent positions

PA Offenders in Other States	3,116	3,141	101	64	13	27
------------------------------	--------------	--------------	------------	-----------	-----------	-----------

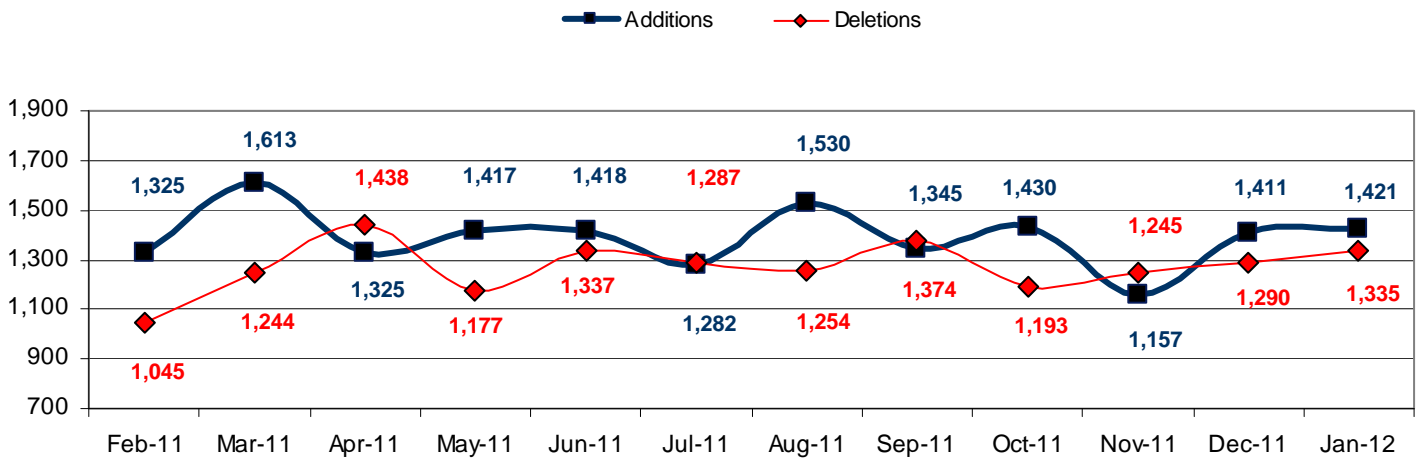
Population - Retrospective Year View



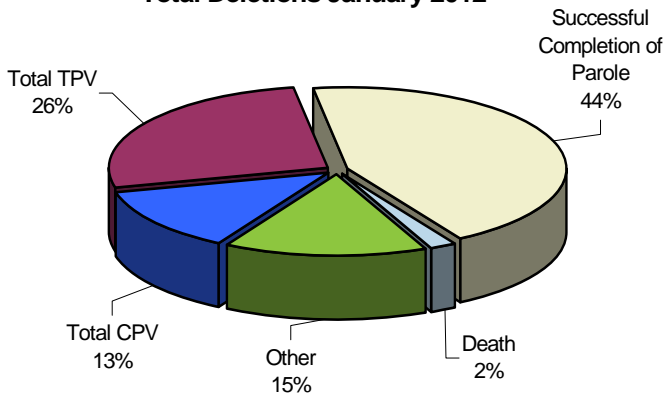
**Table 2
SUPERVISED POPULATION ADDITIONS AND DELETIONS
January 2012**

Population Additions and Deletions	Parole	Reparole	Special County Probation	Special County Parole	Other States' Probation	Other States' Parole	Monthly Total	Fiscal YTD Total
ADDITIONS	844	198	179	67	108	25	1,421	9,576
DELETIONS-RECOMMITMENTS								
<i>Convicted Parole Violator</i>								
State Corrections	99	32	3	0	0	0	134	1,057
County Corrections	4	1	28	3	0	0	36	245
Other States	0	0	0	0	1	1	2	18
Total Convicted Parole Violator	103	33	31	3	1	1	172	1,320
<i>Technical Parole Violator</i>								
State Corrections	220	75	4	0	0	0	299	1,860
County Corrections	8	4	22	15	0	0	49	308
Other States	0	0	0	0	2	1	3	7
Total Technical Parole Violator	228	79	26	15	2	1	351	2,175
TOTAL RECOMMITMENTS	331	112	57	18	3	2	523	3,495
Deletion Successful Completion	327	65	116	21	41	14	584	4,107
Deletion Death	14	3	7	0	1	1	26	143
Deletion Other	14	3	83	8	82	12	202	1,233
TOTAL DELETIONS	686	183	263	47	127	29	1,335	8,978

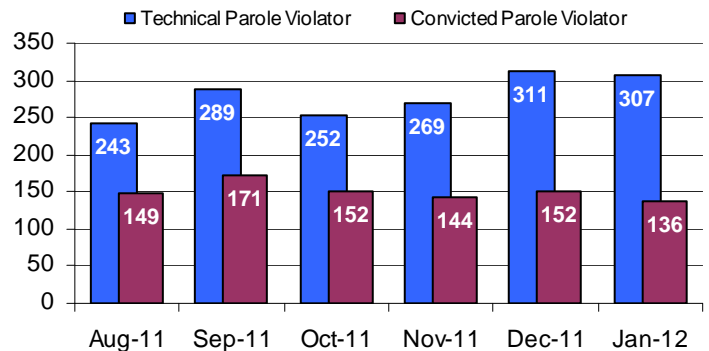
Population Additions & Deletions-Retrospective Year View



Total Deletions January 2012



State Sentence Parole Revocations*



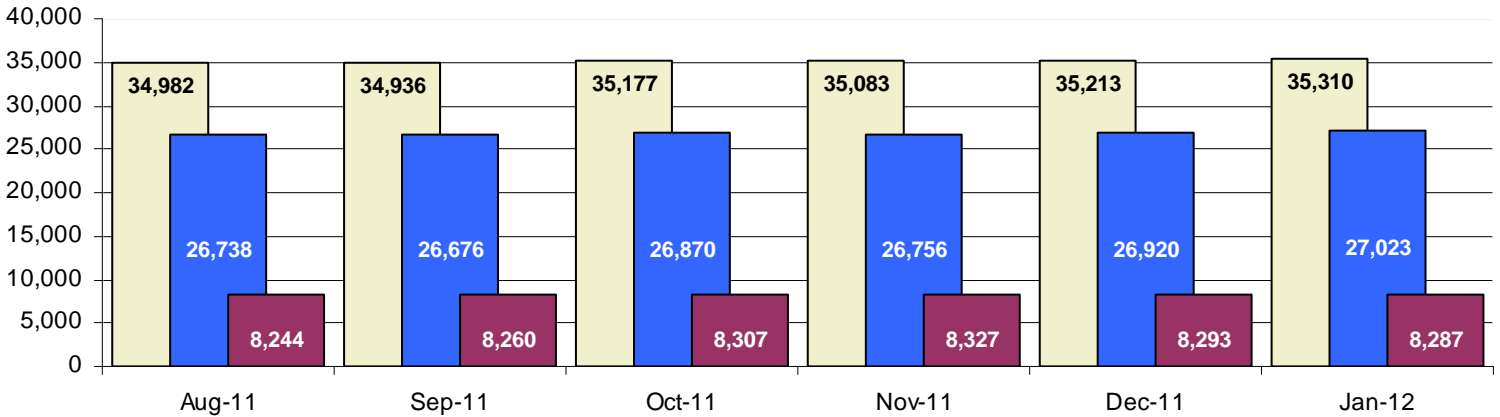
* These revocations represent field case closure records and are dependent on case processing.

Table 3
SUPERVISED POPULATION BY ORIGINATING JURISDICTION and REGION / DISTRICT
January 2012

Region / District	PA Parole State Sentence				County		Other States		Total Population
	State Prisons	Boot Camp	County Prisons	Subtotal	Special Probation	Special Parole	Probation	Parole	
Chester	1,630	43	203	1,876	606	12	293	48	2,835
Philadelphia	7,340	153	355	7,848	1,262	7	600	143	9,860
Eastern Region	8,970	196	558	9,724	1,868	19	893	191	12,695
Allentown	2,660	133	356	3,149	422	4	397	96	4,068
Harrisburg	3,647	191	137	3,975	385	5	288	59	4,712
Scranton	1,194	8	204	1,406	194	1	235	74	1,910
Williamsport	697	14	35	746	126	6	99	24	1,001
Central Region	8,198	346	732	9,276	1,127	16	1,019	253	11,691
Altoona	908	20	65	993	350	78	76	27	1,524
Mercer	723	17	38	778	1,398	871	102	25	3,174
Erie	1,079	35	173	1,287	204	62	87	23	1,663
Pittsburgh	2,999	189	76	3,264	876	61	287	75	4,563
Western Region	5,709	261	352	6,322	2,828	1,072	552	150	10,924
Total	22,877	803	1,642	25,322	5,823	1,107	2,464	594	35,310
Percent of Total	65%	2%	5%	72%	16%	3%	7%	2%	100%

Parole and Probation Supervised Populations

□ Total Population ■ Parole ■ Probation



Supervised State Sentence Cases

■ Total State Sentence Cases ■ State Prison Cases ■ County Prison Cases ■ Boot Camp Cases

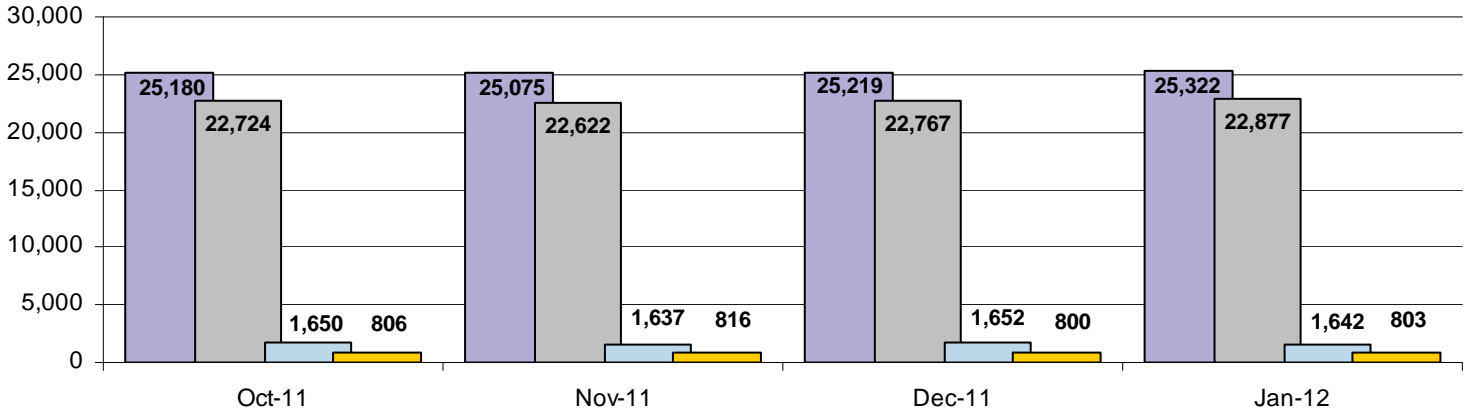


Table 4
SUPERVISED POPULATION BY GRADE OF SUPERVISION and REGION / DISTRICT
January 2012

Region / District	Reporting							Non-Reporting		Total Population
	Enhanced	Maximum	Medium	Minimum	ADM / SPC	Not Classified	Subtotal	Absconder	Detainees	
Chester	4	277	674	1,125	307	12	2,399	61	375	2,835
Philadelphia	4	1,425	2,041	3,536	500	48	7,554	454	1,852	9,860
Eastern Region	8	1,702	2,715	4,661	807	60	9,953	515	2,227	12,695
Allentown	18	792	869	1,400	185	16	3,280	176	612	4,068
Harrisburg	18	795	1,069	1,395	452	12	3,741	180	791	4,712
Scranton	14	289	428	681	155	16	1,583	35	292	1,910
Williamsport	0	94	302	350	123	0	869	11	121	1,001
Central Region	50	1,970	2,668	3,826	915	44	9,473	402	1,816	11,691
Altoona	2	269	466	444	91	1	1,273	16	235	1,524
Mercer	3	256	929	1,383	215	6	2,792	64	318	3,174
Erie	3	311	453	543	131	7	1,448	40	175	1,663
Pittsburgh	38	1,243	1,364	935	124	5	3,709	140	714	4,563
Western Region	46	2,079	3,212	3,305	561	19	9,222	260	1,442	10,924
Total	104	5,751	8,595	11,792	2,283	123	28,648	1,177	5,485	35,310
Percent of Total	<1%	16%	24%	34%	7%	<1%	81%	3%	16%	100%

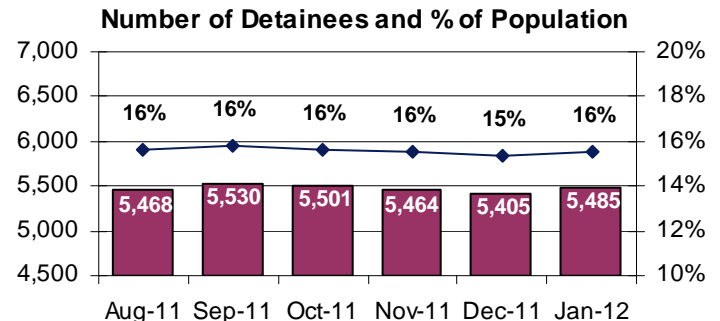
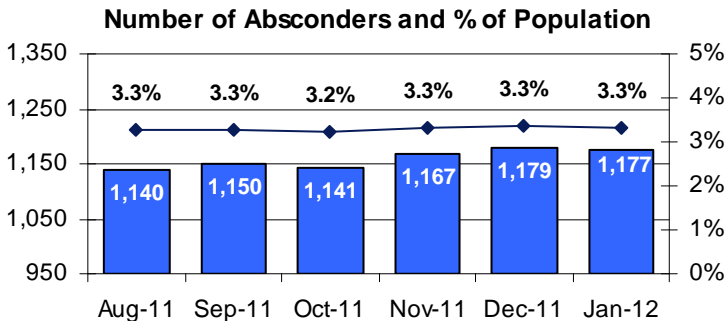
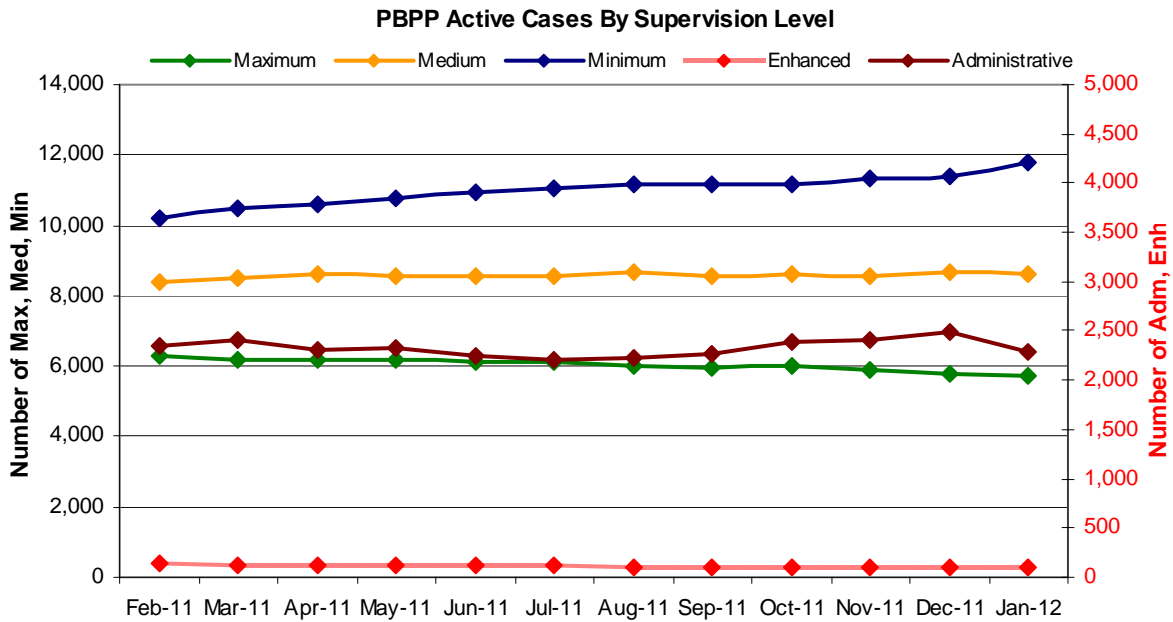


Table 5
SUPERVISED POPULATION BY GENDER, RACE and REGION / DISTRICT
January 2012

Region / District	Male					Female					% Male	Total Population
	White	Black	Hispanic	Other ¹	Total	White	Black	Hispanic	Other ¹	Total		
Chester	1,162	1,251	124	29	2,566	190	69	5	5	269	91%	2,835
Philadelphia	1,294	6,557	1,202	146	9,199	176	406	75	4	661	93%	9,860
EASTERN REGION	2,456	7,808	1,326	175	11,765	366	475	80	9	930	93%	12,695
Allentown	1,864	798	957	37	3,656	259	86	59	8	412	90%	4,068
Harrisburg	2,110	1,477	512	42	4,141	379	137	45	10	571	88%	4,712
Scranton	1,197	352	102	21	1,672	201	24	9	4	238	88%	1,910
Williamsport	704	84	8	3	799	175	21	4	2	202	80%	1,001
CENTRAL REGION	5,875	2,711	1,579	103	10,268	1,014	268	117	24	1,423	88%	11,691
Altoona	1,079	135	7	13	1,234	273	15	0	2	290	81%	1,524
Mercer	2,116	363	6	10	2,495	601	75	1	2	679	79%	3,174
Erie	986	370	54	9	1,419	194	42	4	4	244	85%	1,663
Pittsburgh	1,961	2,009	43	18	4,031	369	150	7	6	532	88%	4,563
WESTERN REGION	6,142	2,877	110	50	9,179	1,437	282	12	14	1,745	84%	10,924
TOTAL	14,473	13,396	3,015	328	31,212	2,817	1,025	209	47	4,098	88%	35,310

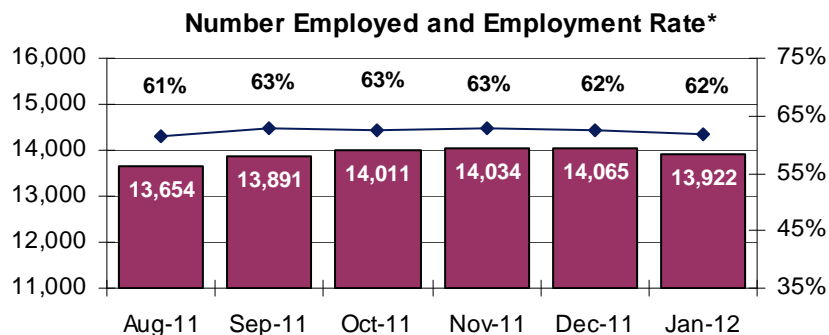
¹ "Other" includes Asian, Pacific Islander, Indian (Native American and Native Alaskan), and cases not elsewhere classified.

Table 6
SUPERVISED POPULATION BY EMPLOYMENT STATUS and REGION / DISTRICT
January 2012

Region / District	In Labor Force				Not In Labor Force					Total Population
	Employed Part Time	Employed Full Time	Unemployed	Employment Rate	Unable to Work ²	Student	Unearned Income ³	Unknown	Non-Reporting	
Chester	134	1,221	689	66%	251	18	84	2	436	2,835
Philadelphia	494	2,444	3,171	48%	782	143	520	0	2,306	9,860
EASTERN REGION	628	3,665	3,860	53%	1,033	161	604	2	2,742	12,695
Allentown	253	1,572	590	76%	492	64	309	0	788	4,068
Harrisburg	190	1,692	1,383	58%	273	38	164	1	971	4,712
Scranton	54	949	261	79%	127	16	176	0	327	1,910
Williamsport	88	441	176	75%	73	11	80	0	132	1,001
CENTRAL REGION	585	4,654	2,410	68%	965	129	729	1	2,218	11,691
Altoona	154	502	309	68%	109	20	179	0	251	1,524
Mercer	299	913	865	58%	385	34	295	1	382	3,174
Erie	148	564	332	68%	188	26	190	0	215	1,663
Pittsburgh	253	1,557	869	68%	687	64	278	1	854	4,563
WESTERN REGION	854	3,536	2,375	65%	1,369	144	942	2	1,702	10,924
TOTAL	2,067	11,855	8,645	62%	3,367	434	2,275	5	6,662	35,310

² Offender is unable to work due to a physical or mental disability, is a care provider, attends inpatient treatment, etc.

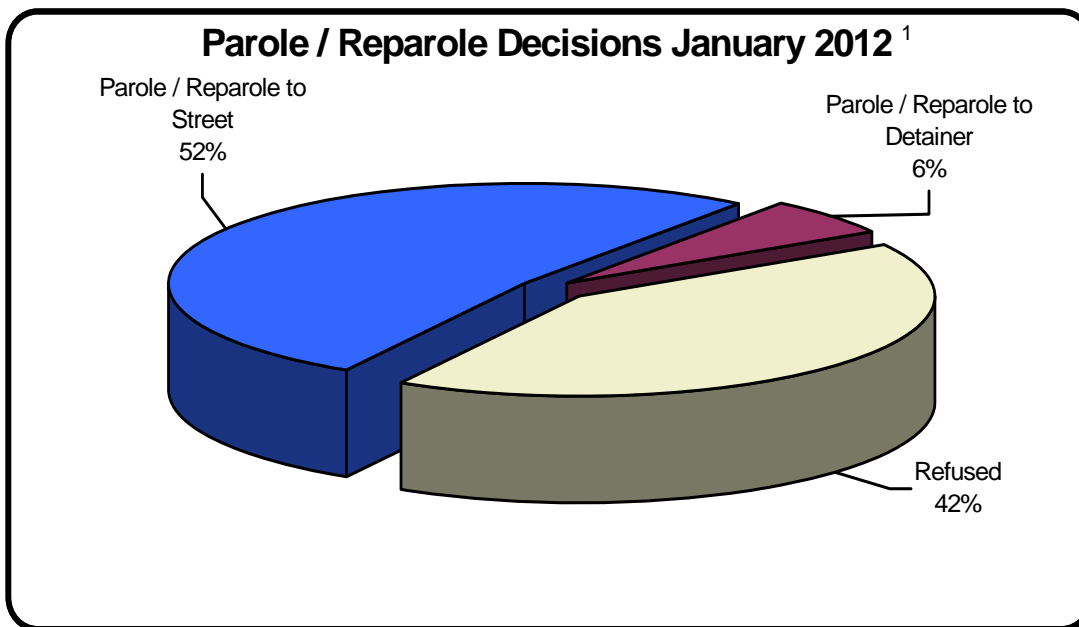
³ Offender collects welfare assistance, workmen's compensation, monthly pension, Social Security, disability payments, etc.



* Employment rate based on those in labor force.

Table 7
BOARD DECISIONS
January 2012

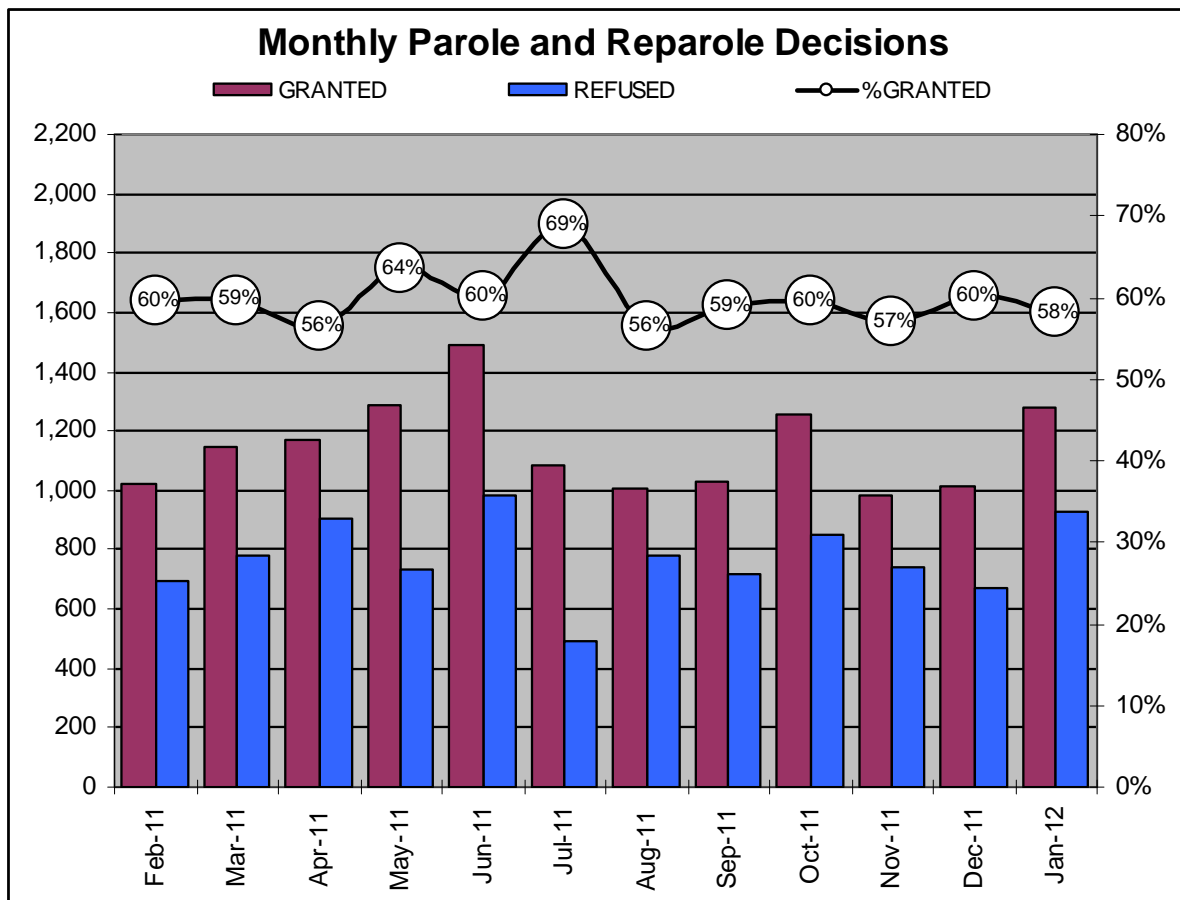
Type of Decision	Total
Parole / Reparole to Street	1,144
Parole / Reparole to Detainer	138
Refused	925
Total Considered	2,207
Recommitments as TPV	316
Recommitments as CPV	149
Recommitments as CPV and TPV	28
Total Recommitments	493
Refer to Prior Action	122
Other Decisions	685
Total Decisions	3,507



¹ The 58% does not necessarily reflect the overall parole rate, but rather is the calculated percent of parole decisions for the total number of Board Actions produced during this period of time.

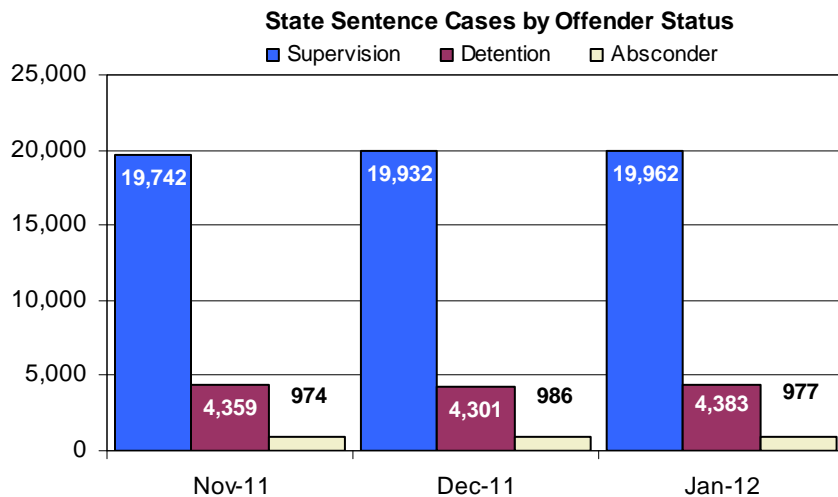
Table 8
MONTHLY PAROLE and REPAROLE DECISIONS
January 2012

MONTH-YEAR	GRANTED	REFUSED	CONSIDERED	% GRANTED
Feb-11	1,024	695	1,719	60%
Mar-11	1,144	779	1,923	59%
Apr-11	1,173	904	2,077	56%
May-11	1,286	734	2,020	64%
Jun-11	1,489	985	2,474	60%
Jul-11	1,081	488	1,569	69%
Aug-11	1,008	777	1,785	56%
Sep-11	1,032	716	1,748	59%
Oct-11	1,259	852	2,111	60%
Nov-11	986	744	1,730	57%
Dec-11	1,015	671	1,686	60%
Jan-12	1,282	925	2,207	58%
Monthly Average Over 12 Months	1,148	773	1,921	60%



Offender Status - January 2012					
Status	State Prison	County Prison	County Sentence	Other States Cases	Total
Supervision	18,633	1,329	5,785	2,901	28,648
Absconder	937	40	200	0	1,177
Detention	4,110	273	945	157	5,485
Total	23,680	1,642	6,930	3,058	35,310

PBPP Monthly Population Profile						
Offender Status	Aug-11	Sep-11	Oct-11	Nov-11	Dec-11	Jan-12
State sentence from state institution	23,385	23,325	23,530	23,438	23,567	23,680
<i>Supervision</i>	18,340	18,280	18,497	18,414	18,590	18,633
<i>Absconder</i>	899	922	921	934	945	937
<i>Detention</i>	4,146	4,123	4,112	4,090	4,032	4,110
State sentence from county prison	1,667	1,660	1,650	1,637	1,652	1,642
<i>Supervision</i>	1,360	1,324	1,337	1,328	1,342	1,329
<i>Absconder</i>	40	41	39	40	41	40
<i>Detention</i>	267	295	274	269	269	273
County sentence Prob & Parole	6,847	6,872	6,926	6,929	6,911	6,930
<i>Supervision</i>	5,731	5,720	5,772	5,768	5,765	5,785
<i>Absconder</i>	201	187	181	193	193	200
<i>Detention</i>	915	965	973	968	953	945
Other state's sentence Prob & Parole	3,083	3,079	3,071	3,079	3,083	3,058
<i>Supervision</i>	2,943	2,932	2,929	2,942	2,932	2,901
<i>Absconder</i>	0	0	0	0	0	0
<i>Detention</i>	140	147	142	137	151	157
PBPP Population end of month	34,982	34,936	35,177	35,083	35,213	35,310



Monthly Count of Grant and Refuse Board Actions							
Type of Decision	County Prison			State Prison			All Grant/Refuse Board Actions
	Grant	Refuse	Total	Grant	Refuse	Total	
February 2011	48	29	77	976	666	1,642	1,719
March 2011	54	32	86	1,090	747	1,837	1,923
April 2011	45	38	83	1,128	866	1,994	2,077
May 2011	56	23	79	1,230	711	1,942	2,020
June 2011	52	24	76	1,437	961	2,398	2,474
July 2011	48	17	65	1,033	471	1,504	1,569
August 2011	51	28	79	957	749	1,706	1,785
September 2011	35	20	55	997	696	1,693	1,748
October 2011	54	24	78	1,205	828	2,033	2,111
November 2011	56	26	82	930	718	1,648	1,730
December 2011	42	12	54	973	659	1,632	1,686
January 2012	45	42	87	1,237	883	2,120	2,207
2012 Total	45	42	87	1,237	883	2,120	2,207

Additions and Deletions						
	Aug-11	Sep-11	Oct-11	Nov-11	Dec-11	Jan-12
Total Additions	1,530	1,345	1,430	1,157	1,411	1,421
State sentence - State Prison	1,022	857	953	709	942	986
State sentence - County Prison	73	54	63	40	71	56
County sentence Prob & Parole	302	274	284	261	255	246
Other state's sentence	133	160	130	147	143	133
Total Deletions	1,254	1,374	1,193	1,245	1,290	1,335
State sentence - State Prison	749	880	729	765	783	812
<i>Technical Violator</i>	232	281	239	252	298	295
<i>Convicted Violator</i>	138	161	142	139	148	131
<i>Successful Completion</i>	347	409	326	353	314	353
<i>Other Case Closure</i>	32	29	22	21	24	33
State sentence - County Prison	57	52	58	56	56	57
<i>Technical Violator</i>	11	8	13	17	13	12
<i>Convicted Violator</i>	11	10	10	5	4	5
<i>Successful Completion</i>	30	30	31	33	34	39
<i>Other Case Closure</i>	5	4	4	1	5	1
County sentence Prob & Parole	293	282	267	285	309	310
<i>Technical Violator</i>	32	37	33	22	32	41
<i>Convicted Violator</i>	33	23	21	35	35	34
<i>Successful Completion</i>	134	158	134	159	152	137
<i>Other Case Closure</i>	94	64	79	69	90	98
Other state's sentence	155	160	139	139	142	156
<i>Technical Violator</i>	2	0	2	0	0	3
<i>Convicted Violator</i>	2	1	3	4	2	2
<i>Successful Completion</i>	56	72	60	47	48	55
<i>Other Case Closure</i>	95	87	74	88	91	96
PBPP Population end of month	34,982	34,936	35,177	35,083	35,213	35,310