

COMMONWEALTH OF PENNSYLVANIA

Board of Probation and Parole

MONTHLY PROGRAM REPORT

April 2012



Tom Corbett
Governor

Michael C. Potteiger
Chairman

C. James Fox
Member

Michael L. Green
Member

Jeffrey R. Imboden
Member

Matthew T. Mangino, Esq
Member

Craig R. McKay
Member

John R. Tuttle
Member

Judith E. Viglione
Member

Lloyd A. White
Member

Carol Lavery
Victim Advocate

PBPP
AN EQUAL OPPORTUNITY EMPLOYER

Published May 10, 2012 by the PBPP Statistical Reporting and Evidence-Based Program Evaluation Office

Copyright © 2012 Commonwealth of Pennsylvania, Board of Probation and Parole. All rights reserved.

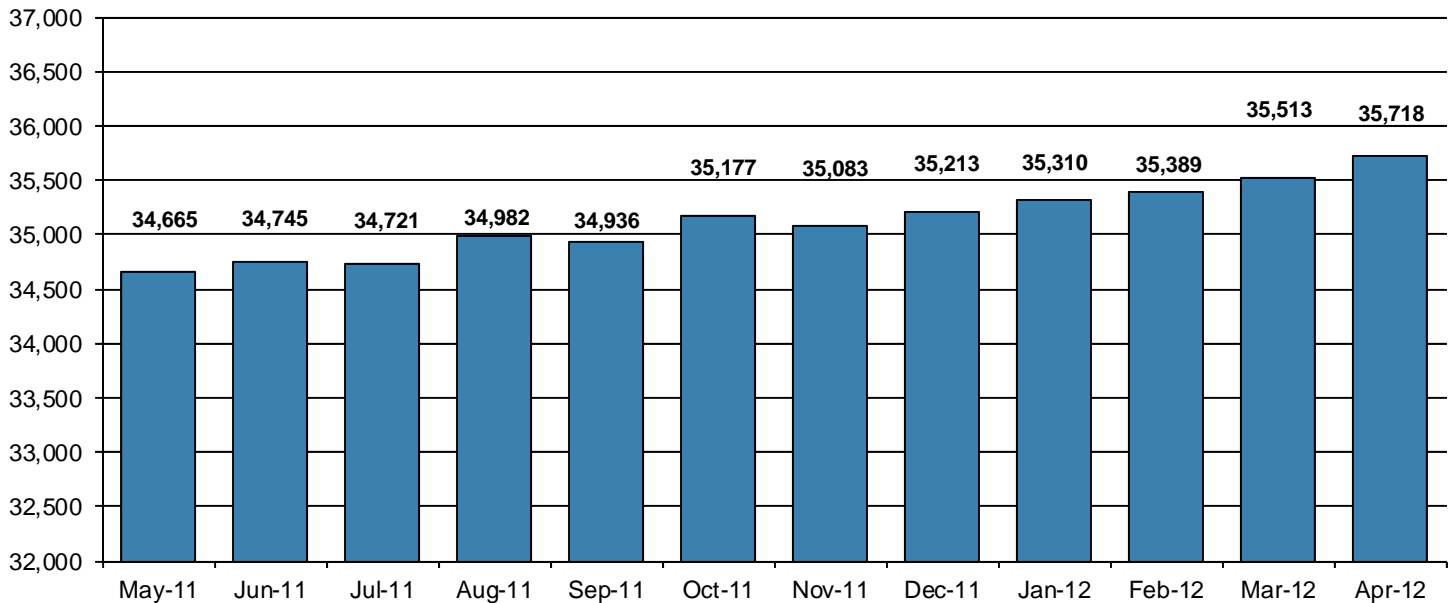
Table 1
WORKLOAD AND POPULATION CHANGES BY REGION / DISTRICT
April 2012

REGION / DISTRICT	Beginning Fiscal Yr ¹ July 2011	Current Month Population	Fiscal YTD Index	Additions	Deletions		Number of Agents ²	Average Workload	Total Workload
					Recommits/ Revocations	Other Deletions			
CHESTER	2,782	2,865	103	101	27	65	35	137	4,782
PHILADELPHIA	9,561	9,898	104	386	152	181	134	118	15,873
EASTERN REGION	12,343	12,763	103	487	179	246	169	122	20,656
ALLENTOWN	4,051	4,074	101	175	80	91	53	136	7,182
HARRISBURG	4,687	4,892	104	227	70	83	63	138	8,671
SCRANTON	1,876	1,897	101	81	36	42	31	115	3,574
WILLIAMSPORT	1,000	1,031	103	32	11	24	15	129	1,942
CENTRAL REGION	11,614	11,894	102	515	197	240	162	132	21,369
ALTOONA	1,520	1,477	97	37	19	38	24	119	2,866
MERCER	3,230	3,323	103	154	37	100	43	145	6,232
ERIE	1,544	1,656	107	63	38	47	25	122	3,049
PITTSBURGH	4,494	4,605	102	209	79	95	71	124	8,837
WESTERN REGION	10,788	11,061	103	463	173	280	163	129	20,984
TOTAL Supervised	34,745	35,718	103	1,465	549	766	494	128	63,009

¹ effective June 30² Filled agent positions

PA Offenders in Other States	3,116	3,066	98	65	8	42
------------------------------	--------------	--------------	-----------	-----------	----------	-----------

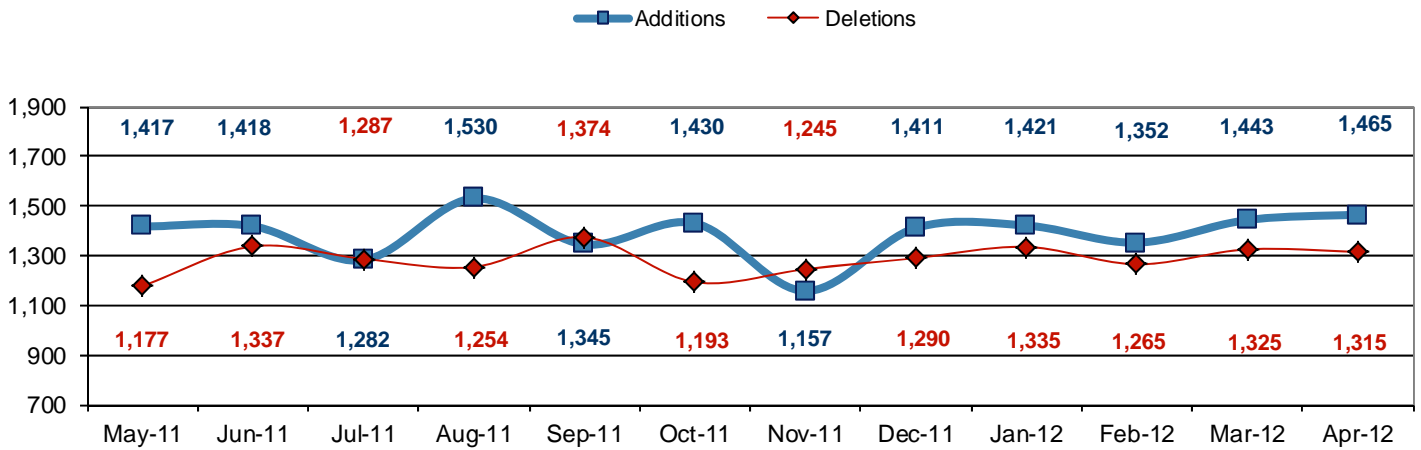
Population - Retrospective Year View



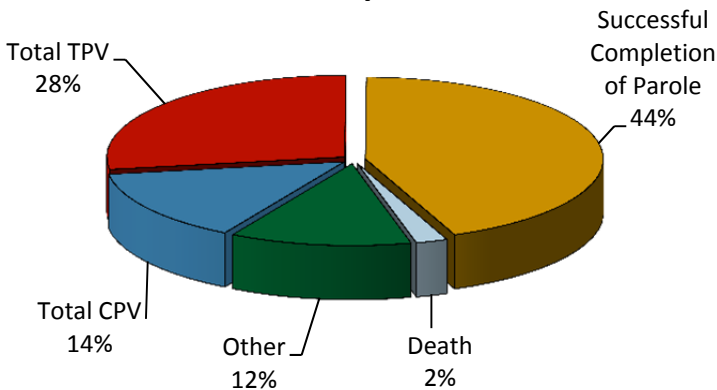
**Table 2
SUPERVISED POPULATION ADDITIONS AND DELETIONS
April 2012**

Population Additions and Deletions	Parole	Reparole	Special County Probation	Special County Parole	Other States' Probation	Other States' Parole	Monthly Total	Fiscal YTD Total
ADDITIONS	872	203	189	61	104	36	1,465	13,836
DELETIONS-RECOMMITMENTS								
<i>Convicted Parole Violator</i>								
State Corrections	132	22	4	0	0	0	158	1,542
County Corrections	5	1	15	6	0	0	27	333
Other States	0	0	0	0	1	1	2	28
<i>Total Convicted Parole Violator</i>	137	23	19	6	1	1	187	1,903
<i>Technical Parole Violator</i>								
State Corrections	229	64	7	0	0	0	300	2,676
County Corrections	11	4	35	11	0	0	61	465
Other States	0	0	0	0	1	0	1	14
<i>Total Technical Parole Violator</i>	240	68	42	11	1	0	362	3,155
TOTAL RECOMMITMENTS	377	91	61	17	2	1	549	5,058
Deletion Successful Completion	284	68	124	39	51	10	576	5,867
Deletion Death	14	7	4	1	2	0	28	226
Deletion Other	15	6	54	6	69	12	162	1,732
TOTAL DELETIONS	690	172	243	63	124	23	1,315	12,883

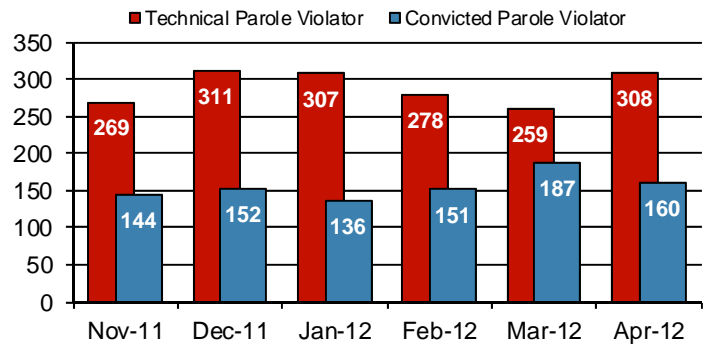
Population Additions & Deletions-Retrospective Year View



Total Deletions April 2012



State Sentence Parole Revocations*

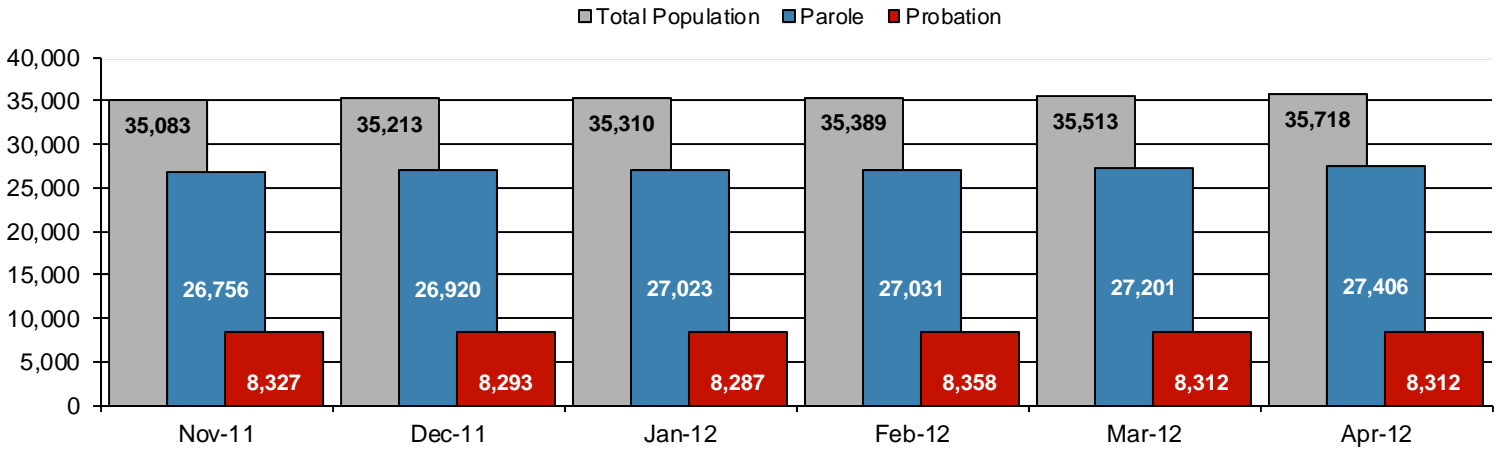


* These revocations represent field case closure records and are dependent on case processing.

Table 3
SUPERVISED POPULATION BY ORIGINATING JURISDICTION and REGION / DISTRICT
April 2012

Region / District	PA Parole State Sentence				County		Other States		Total Population
	State Prisons	Boot Camp	County Prisons	Subtotal	Special Probation	Special Parole	Probation	Parole	
Chester	1,647	46	208	1,901	601	15	299	49	2,865
Philadelphia	7,384	144	349	7,877	1,279	13	585	144	9,898
Eastern Region	9,031	190	557	9,778	1,880	28	884	193	12,763
Allentown	2,693	125	336	3,154	437	4	381	98	4,074
Harrisburg	3,807	187	161	4,155	388	3	279	67	4,892
Scranton	1,171	5	205	1,381	202	2	230	82	1,897
Williamsport	724	16	35	775	125	7	99	25	1,031
Central Region	8,395	333	737	9,465	1,152	16	989	272	11,894
Altoona	890	19	54	963	338	71	77	28	1,477
Mercer	739	20	44	803	1,449	946	99	26	3,323
Erie	1,099	39	173	1,311	193	57	77	18	1,656
Pittsburgh	3,024	191	81	3,296	892	57	282	78	4,605
Western Region	5,752	269	352	6,373	2,872	1,131	535	150	11,061
Total	23,178	792	1,646	25,616	5,904	1,175	2,408	615	35,718
Percent of Total	65%	2%	5%	72%	16%	3%	7%	2%	100%

Parole and Probation Supervised Populations



Supervised State Sentence Cases

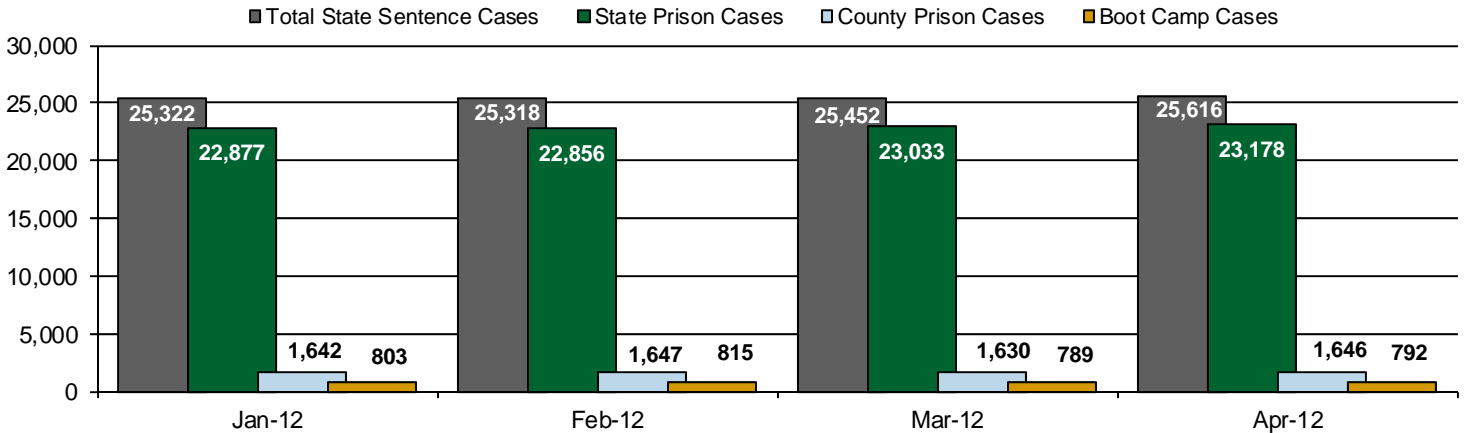
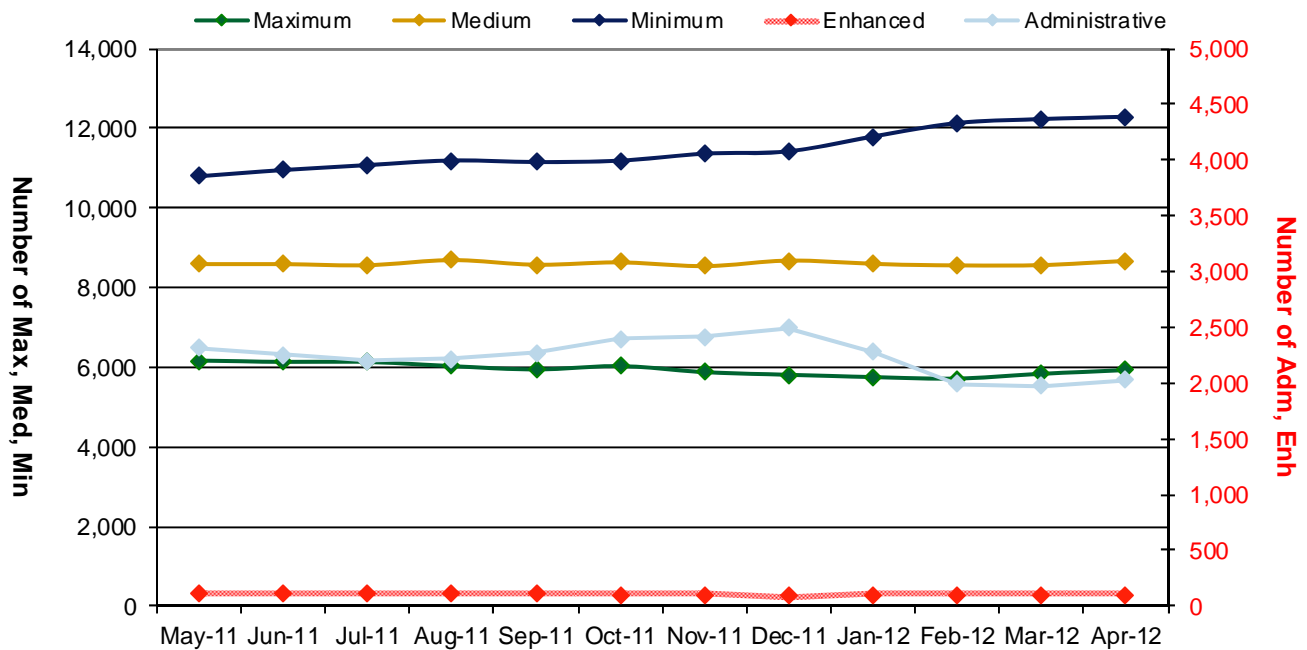


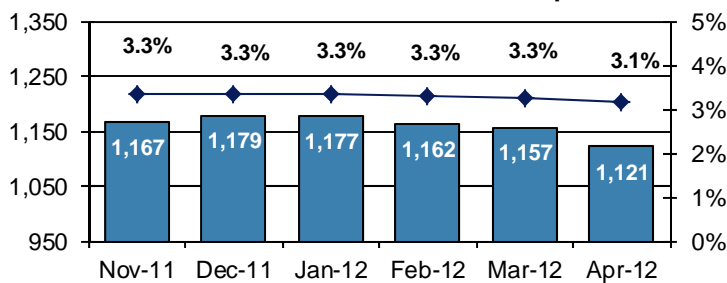
Table 4
SUPERVISED POPULATION BY GRADE OF SUPERVISION and REGION / DISTRICT
April 2012

Region / District	Reporting							Non-Reporting		Total Population
	Enhanced	Maximum	Medium	Minimum	ADM / SPC	Not Classified	Subtotal	Absconder	Detainees	
Chester	3	278	665	1,176	289	8	2,419	53	393	2,865
Philadelphia	6	1,436	2,109	3,662	406	56	7,675	433	1,790	9,898
Eastern Region	9	1,714	2,774	4,838	695	64	10,094	486	2,183	12,763
Allentown	14	810	906	1,422	137	13	3,302	164	608	4,074
Harrisburg	19	867	1,115	1,488	397	17	3,903	164	825	4,892
Scranton	13	274	443	721	129	10	1,590	40	267	1,897
Williamsport	1	111	296	375	114	0	897	11	123	1,031
Central Region	47	2,062	2,760	4,006	777	40	9,692	379	1,823	11,894
Altoona	0	269	440	463	84	4	1,260	20	197	1,477
Mercer	5	282	922	1,457	264	1	2,931	56	336	3,323
Erie	7	349	435	521	126	4	1,442	42	172	1,656
Pittsburgh	35	1,251	1,337	1,002	78	5	3,708	138	759	4,605
Western Region	47	2,151	3,134	3,443	552	14	9,341	256	1,464	11,061
Total	103	5,927	8,668	12,287	2,024	118	29,127	1,121	5,470	35,718
Percent of Total	<1%	17%	24%	34%	6%	<1%	82%	3%	15%	100%

PBPP Active Cases By Supervision Level



Number of Absconders and % of Population



Number of Detainees and % of Population

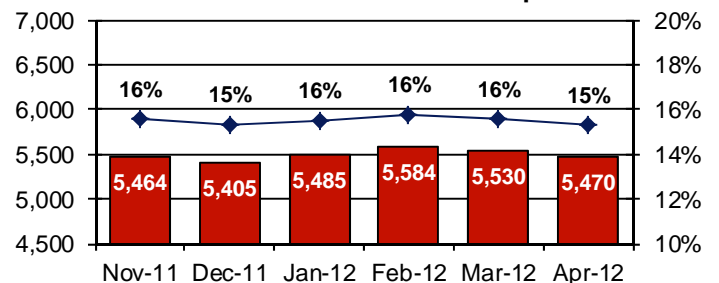


Table 5
SUPERVISED POPULATION BY GENDER, RACE and REGION / DISTRICT
April 2012

Region / District	Male					Female					% Male	Total Population
	White	Black	Hispanic	Other ¹	Total	White	Black	Hispanic	Other ¹	Total		
Chester	1,187	1,258	122	27	2,594	191	68	7	5	271	91%	2,865
Philadelphia	1,250	6,613	1,205	152	9,220	178	414	80	6	678	93%	9,898
EASTERN REGION	2,437	7,871	1,327	179	11,814	369	482	87	11	949	93%	12,763
Allentown	1,882	801	954	34	3,671	260	79	58	6	403	90%	4,074
Harrisburg	2,166	1,566	554	43	4,329	382	131	41	9	563	88%	4,892
Scranton	1,187	350	98	19	1,654	205	25	9	4	243	87%	1,897
Williamsport	729	92	8	3	832	170	21	6	2	199	81%	1,031
CENTRAL REGION	5,964	2,809	1,614	99	10,486	1,017	256	114	21	1,408	88%	11,894
Altoona	1,056	130	7	13	1,206	258	12	0	1	271	82%	1,477
Mercer	2,203	388	7	12	2,610	633	78	1	1	713	79%	3,323
Erie	990	373	51	9	1,423	178	48	4	3	233	86%	1,656
Pittsburgh	1,949	2,069	45	19	4,082	361	152	2	8	523	89%	4,605
WESTERN REGION	6,198	2,960	110	53	9,321	1,430	290	7	13	1,740	84%	11,061
TOTAL	14,599	13,640	3,051	331	31,621	2,816	1,028	208	45	4,097	89%	35,718

¹ "Other" includes Asian, Pacific Islander, Native American, Native Alaskan, and cases not elsewhere classified.

Table 6
SUPERVISED POPULATION BY EMPLOYMENT STATUS and REGION / DISTRICT
April 2012

Region / District	In Labor Force				Not In Labor Force					Total Population
	Employed Part Time	Employed Full Time	Unemployed	Employment Rate	Unable to Work ²	Student	Unearned Income ³	Unknown	Non-Reporting	
Chester	147	1,210	682	67%	270	24	84	2	446	2,865
Philadelphia	519	2,403	3,368	46%	727	137	518	3	2,223	9,898
EASTERN REGION	666	3,613	4,050	51%	997	161	602	5	2,669	12,763
Allentown	244	1,593	538	77%	554	68	305	0	772	4,074
Harrisburg	187	1,679	1,551	55%	277	32	176	1	989	4,892
Scranton	58	920	286	77%	146	11	169	0	307	1,897
Williamsport	113	470	124	82%	86	14	90	0	134	1,031
CENTRAL REGION	602	4,662	2,499	68%	1,063	125	740	1	2,202	11,894
Altoona	160	484	314	67%	105	20	176	1	217	1,477
Mercer	315	954	909	58%	397	35	317	4	392	3,323
Erie	130	532	368	64%	214	23	175	0	214	1,656
Pittsburgh	251	1,563	865	68%	684	63	280	2	897	4,605
WESTERN REGION	856	3,533	2,456	64%	1,400	141	948	7	1,720	11,061
TOTAL	2,124	11,808	9,005	61%	3,460	427	2,290	13	6,591	35,718

² Offender is unable to work due to a physical or mental disability, is a care provider, attends inpatient treatment, etc.

³ Offender collects income assistance, workman's compensation, monthly pension, Social Security, disability payments, etc.

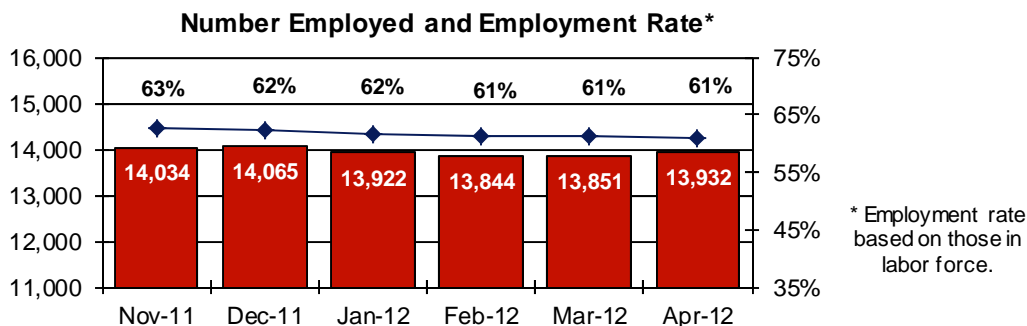
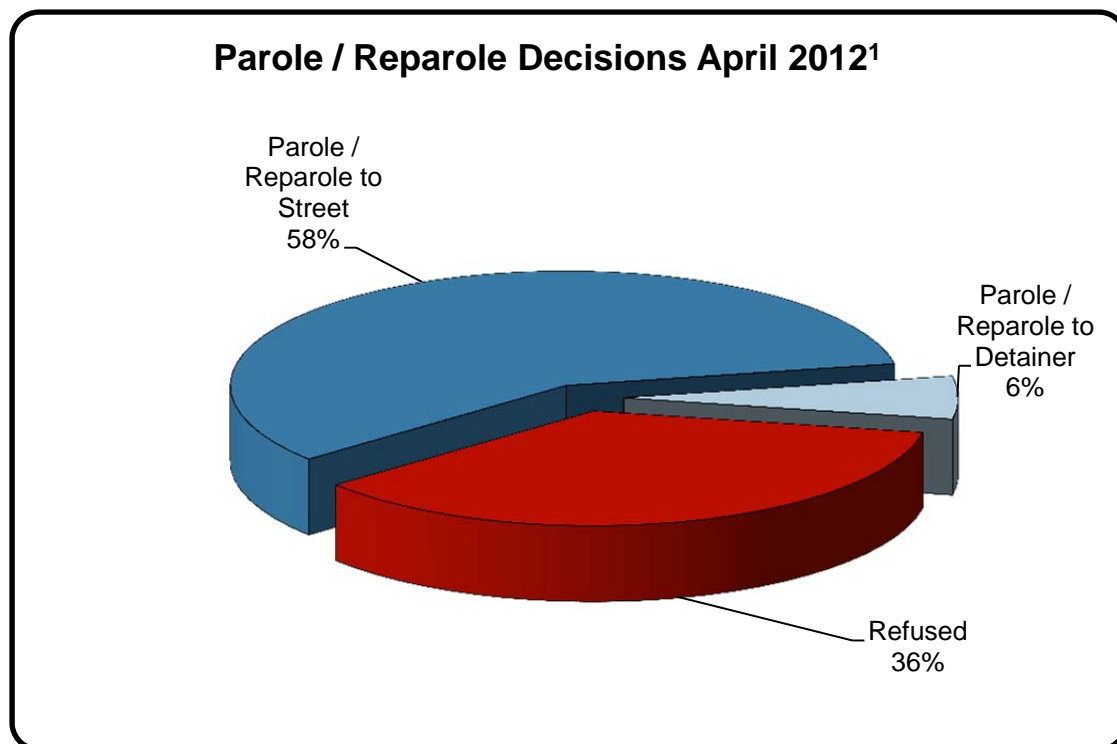


Table 7
BOARD DECISIONS
April 2012

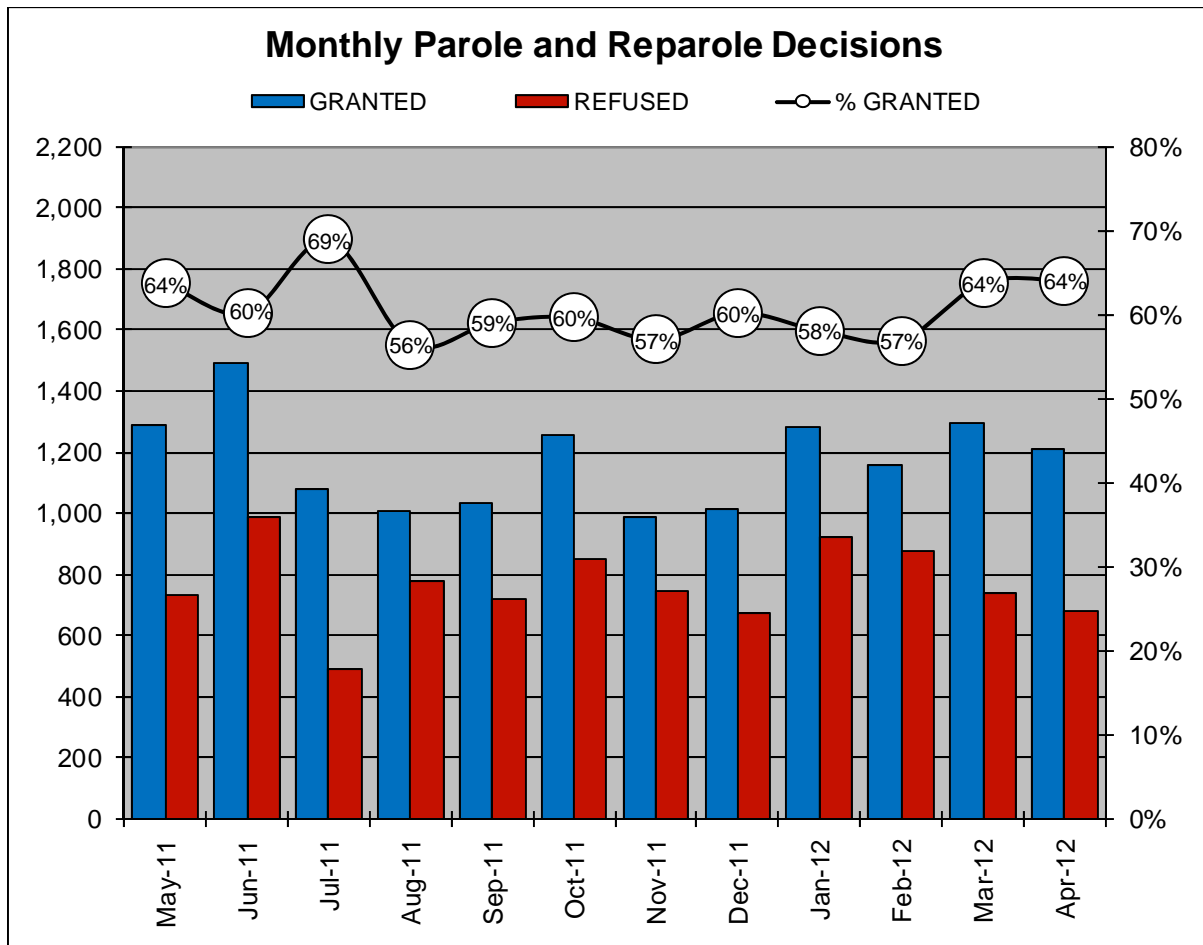
Type of Decision		Total
Parole / Reparole to Street	1,098	
Parole / Reparole to Detainer	114	
Refused	679	
Total Considered		1,891
<hr/>		
Recommitments as TPV	389	
Recommitments as CPV	171	
Recommitments as CPV and TPV	44	
Total Recommitments		604
Refer to Prior Action		79
Other Decisions		726
Total Decisions		3,300



¹ The 64% does not necessarily reflect the overall grant rate, but rather is the calculated percent of grant decisions for the total number of Board Actions produced during this period of time.

Table 8
MONTHLY PAROLE and REPAROLE DECISIONS
April 2012

MONTH-YEAR	GRANTED	REFUSED	CONSIDERED	% GRANTED
May-11	1,286	734	2,020	64%
Jun-11	1,489	985	2,474	60%
Jul-11	1,081	488	1,569	69%
Aug-11	1,008	777	1,785	56%
Sep-11	1,032	716	1,748	59%
Oct-11	1,259	852	2,111	60%
Nov-11	986	744	1,730	57%
Dec-11	1,015	671	1,686	60%
Jan-12	1,282	925	2,207	58%
Feb-12	1,156	874	2,030	57%
Mar-12	1,296	736	2,032	64%
Apr-12	1,212	679	1,891	64%
Monthly Average Over 12 Months	1,175	765	1,940	61%

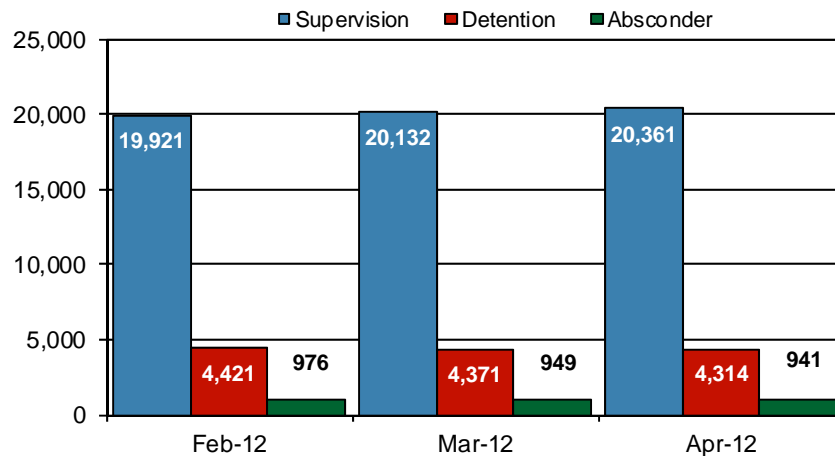


PBPP Population Breakdown By Place of Incarceration/Jurisdiction – April 2012

Offender Status - April 2012					
Status	State Prison	County Prison	County Sentence	Other States Cases	Total
Supervision	19,014	1,347	5,896	2,870	29,127
Absconder	902	39	180	0	1,121
Detention	4,054	260	1,003	153	5,470
Total	23,970	1,646	7,079	3,023	35,718

PBPP Monthly Population Profile						
Offender Status	Nov-11	Dec-11	Jan-12	Feb-12	Mar-12	Apr-12
State sentence from state institution	23,438	23,567	23,680	23,671	23,822	23,970
<i>Supervision</i>	18,414	18,590	18,633	18,582	18,802	19,014
<i>Absconder</i>	934	945	937	936	916	902
<i>Detention</i>	4,090	4,032	4,110	4,153	4,104	4,054
State sentence from county prison	1,637	1,652	1,642	1,647	1,630	1,646
<i>Supervision</i>	1,328	1,342	1,329	1,339	1,330	1,347
<i>Absconder</i>	40	41	40	40	33	39
<i>Detention</i>	269	269	273	268	267	260
County sentence Prob & Parole	6,929	6,911	6,930	6,983	7,039	7,079
<i>Supervision</i>	5,768	5,765	5,785	5,801	5,825	5,896
<i>Absconder</i>	193	193	200	186	208	180
<i>Detention</i>	968	953	945	996	1,006	1,003
Other state's sentence Prob & Parole	3,079	3,083	3,058	3,088	3,022	3,023
<i>Supervision</i>	2,942	2,932	2,901	2,921	2,869	2,870
<i>Absconder</i>	0	0	0	0	0	0
<i>Detention</i>	137	151	157	167	153	153
PBPP Population end of month	35,083	35,213	35,310	35,389	35,513	35,718

State Sentence Cases by Offender Status



PBPP Population Breakdown By Place of Incarceration/Jurisdiction – April 2012

Monthly Count of Grant and Refuse Board Actions							
Type of Decision	County Prison			State Prison			All Grant/Refuse Board Actions
	Grant	Refuse	Total	Grant	Refuse	Total	
May 2011	56	23	79	1,230	711	1,942	2,020
June 2011	52	24	76	1,437	961	2,398	2,474
July 2011	48	17	65	1,033	471	1,504	1,569
August 2011	51	28	79	957	749	1,706	1,785
September 2011	35	20	55	997	696	1,693	1,748
October 2011	54	24	78	1,205	828	2,033	2,111
November 2011	56	26	82	930	718	1,648	1,730
December 2011	42	12	54	973	659	1,632	1,686
January 2012	45	42	87	1,237	883	2,120	2,207
February 2012	47	15	62	1,109	859	1,968	2,030
March 2012	43	22	65	1,253	714	1,967	2,032
April 2012	43	13	56	1,169	666	1,835	1,891
2012 Total	178	92	270	4,768	3,122	7,890	8,160

Additions and Deletions						
	Nov-11	Dec-11	Jan-12	Feb-12	Mar-12	Apr-12
Total Additions	1,157	1,411	1,421	1,352	1,443	1,465
State sentence - State Prison	709	942	986	869	1,006	1,008
State sentence - County Prison	40	71	56	53	60	67
County sentence Prob & Parole	261	255	246	268	248	250
Other state's sentence	147	143	133	162	129	140
Total Deletions	1,245	1,290	1,335	1,265	1,325	1,315
State sentence - State Prison	765	783	812	801	802	806
<i>Technical Violator</i>	252	298	295	269	243	293
<i>Convicted Violator</i>	139	148	131	144	178	154
<i>Successful Completion</i>	353	314	353	352	350	323
<i>Other Case Closure</i>	21	24	33	37	31	36
State sentence - County Prison	56	56	57	56	65	56
<i>Technical Violator</i>	17	13	12	9	16	15
<i>Convicted Violator</i>	5	4	5	7	9	6
<i>Successful Completion</i>	33	34	39	35	35	29
<i>Other Case Closure</i>	1	5	1	5	5	6
County sentence Prob & Parole	285	309	310	272	265	306
<i>Technical Violator</i>	22	32	41	33	42	53
<i>Convicted Violator</i>	35	35	34	25	25	25
<i>Successful Completion</i>	159	152	137	148	123	163
<i>Other Case Closure</i>	69	90	98	66	75	65
Other state's sentence	139	142	156	135	193	147
<i>Technical Violator</i>	0	0	3	2	4	1
<i>Convicted Violator</i>	4	2	2	4	4	2
<i>Successful Completion</i>	47	48	55	62	79	61
<i>Other Case Closure</i>	88	91	96	67	106	83
PBPP Population end of month	35,083	35,213	35,310	35,389	35,513	35,718