

# COMMONWEALTH OF PENNSYLVANIA

## Board of Probation and Parole

### MONTHLY PROGRAM REPORT

April 2011



**Tom Corbett**  
Governor

Catherine C. McVey  
Chairman

C. James Fox  
Member

Michael L. Green  
Member

Jeffrey R. Imboden  
Member

Matthew T. Mangino, Esq  
Member

Benjamin A. Martinez  
Member

John R. Tuttle  
Member

Judith E. Viglione  
Member

Lloyd A. White  
Member

Carol Lavery  
Victim Advocate

**PBPP**  
AN EQUAL OPPORTUNITY EMPLOYER

Published May 9, 2011 by the PBPP Statistical Reporting and Evidence-Based Program Evaluation Office

Copyright © 2011 by the Pennsylvania Board of Probation and Parole. All rights reserved.

**Table 1  
WORKLOAD AND POPULATION CHANGES BY REGION / DISTRICT  
April 2011**

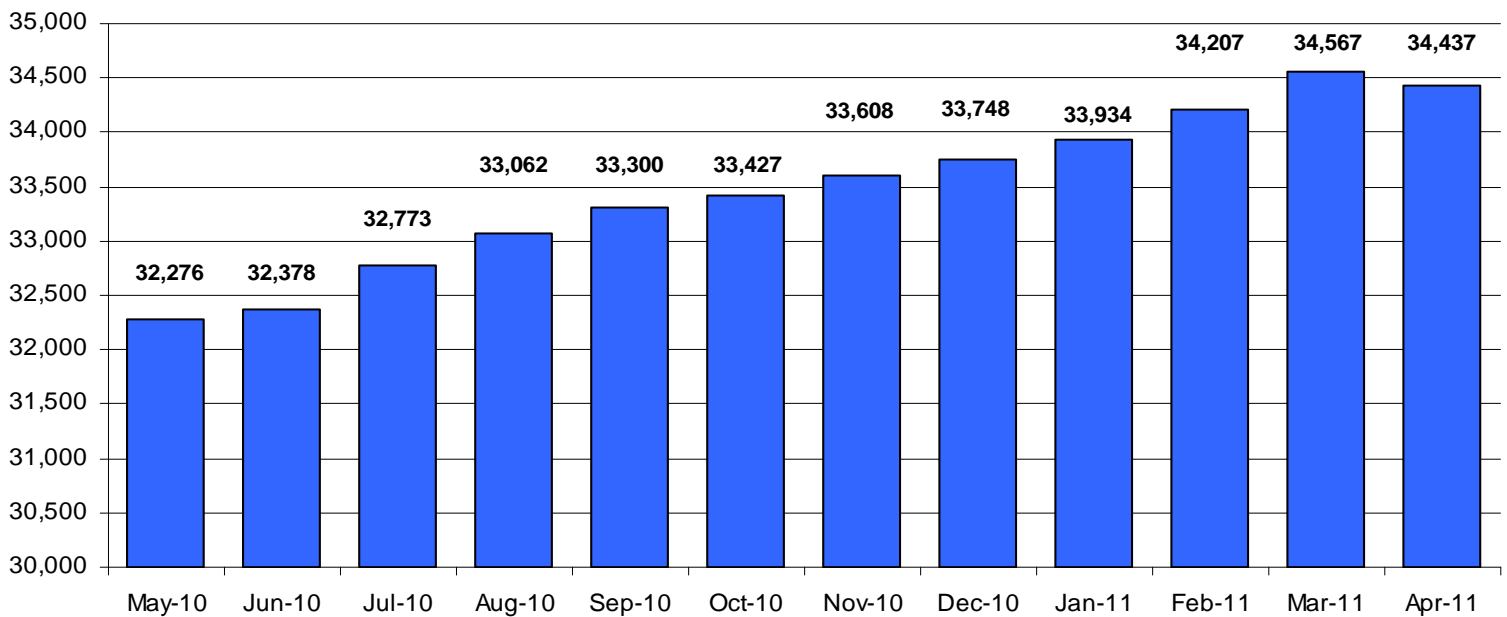
REGION / DISTRICT	Beginning Fiscal Yr <sup>1</sup> July 2010	Current Month Population	Fiscal YTD Index	Additions	Deletions		Number of Agents <sup>2</sup>	Average Workload	Total Workload
					Recommits/ Revocations	Other Deletions			
CHESTER	2,583	2,803	109	108	35	46	36	128	4,622
PHILADELPHIA	9,095	9,487	104	310	196	242	132	117	15,379
<b>EASTERN REGION</b>	<b>11,678</b>	<b>12,290</b>	<b>105</b>	<b>418</b>	<b>231</b>	<b>288</b>	<b>168</b>	<b>119</b>	<b>20,001</b>
ALLENTOWN	3,685	3,945	107	184	99	119	52	131	6,838
HARRISBURG	4,161	4,607	111	171	87	88	59	142	8,357
SCRANTON	1,766	1,849	105	83	35	32	29	116	3,375
WILLIAMSPORT	918	983	107	29	14	28	15	128	1,924
<b>CENTRAL REGION</b>	<b>10,530</b>	<b>11,384</b>	<b>108</b>	<b>467</b>	<b>235</b>	<b>267</b>	<b>155</b>	<b>132</b>	<b>20,494</b>
ALTOONA	1,399	1,517	108	65	22	38	22	138	3,045
MERCER	3,180	3,246	102	137	31	76	44	141	6,225
ERIE	1,471	1,533	104	59	27	36	23	122	2,807
PITTSBURGH	4,120	4,467	108	179	103	84	67	127	8,498
<b>WESTERN REGION</b>	<b>10,170</b>	<b>10,763</b>	<b>106</b>	<b>440</b>	<b>183</b>	<b>234</b>	<b>156</b>	<b>132</b>	<b>20,575</b>
<b>TOTAL Supervised</b>	<b>32,378</b>	<b>34,437</b>	<b>106</b>	<b>1,325</b>	<b>649</b>	<b>789</b>	<b>479</b>	<b>127</b>	<b>61,071</b>

<sup>1</sup> effective June 30

<sup>2</sup> Filled agent positions

PA Offenders in Other States	<b>2,760</b>	<b>3,075</b>	<b>111</b>	<b>80</b>	<b>10</b>	<b>22</b>
------------------------------	--------------	--------------	------------	-----------	-----------	-----------

**Population - Retrospective Year View**

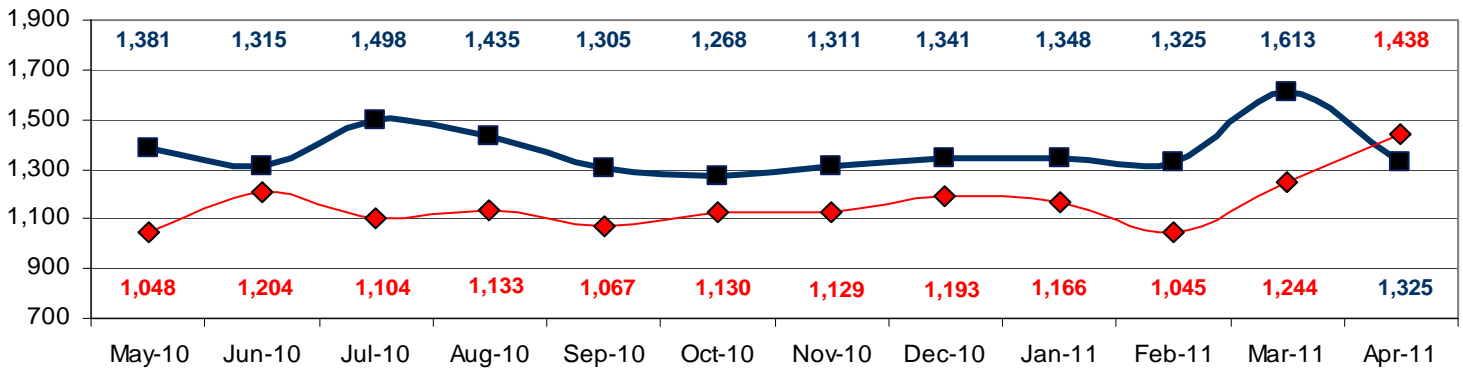


**Table 2  
SUPERVISED POPULATION ADDITIONS AND DELETIONS  
April 2011**

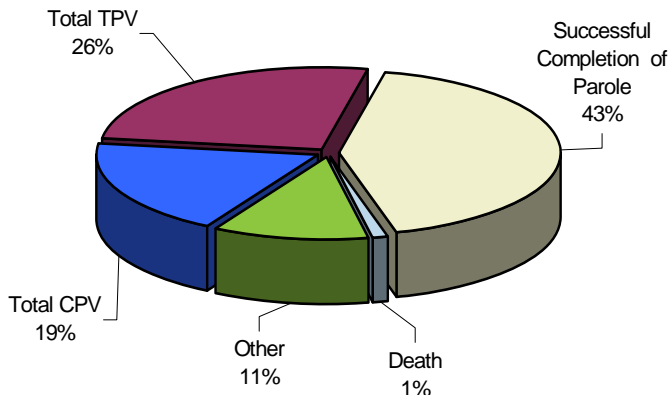
Population Additions and Deletions	Parole	Reparole	Special County Probation	Special County Parole	Other States' Probation	Other States' Parole	Monthly Total	Fiscal YTD Total
<b>ADDITIONS</b>	763	162	210	58	114	18	1,325	13,769
<b>DELETIONS-RECOMMITMENTS</b>								
<i>Convicted Parole Violator</i>								
State Corrections	178	52	3	0	0	0	233	1,381
County Corrections	12	0	21	6	0	0	39	344
Other States	0	0	0	0	2	0	2	22
<b>Total Convicted Parole Violator</b>	190	52	24	6	2	0	274	1,747
<i>Technical Parole Violator</i>								
State Corrections	232	92	5	0	0	0	329	1,864
County Corrections	17	2	20	4	0	0	43	433
Other States	0	0	0	0	3	0	3	18
<b>Total Technical Parole Violator</b>	249	94	25	4	3	0	375	2,315
<b>TOTAL RECOMMITMENTS</b>	439	146	49	10	5	0	649	4,062
Deletion Successful Completion	345	67	109	20	64	5	610	5,707
Deletion Death	6	4	2	0	4	0	16	189
Deletion Other	13	8	60	3	63	16	163	1,691
<b>TOTAL DELETIONS</b>	803	225	220	33	136	21	1,438	11,649

**Population Additions & Deletions-Retrospective Year View**

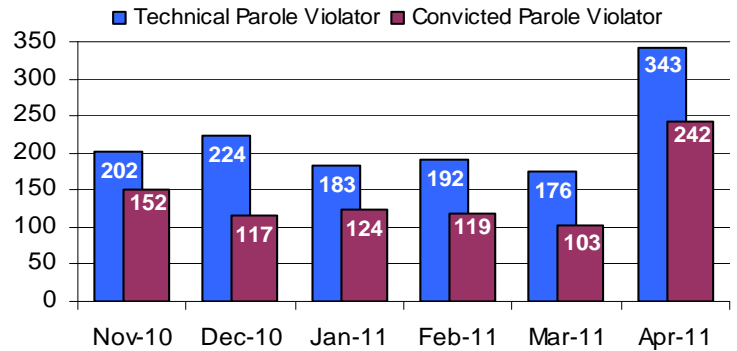
■ ADDITIONS    ◆ DELETIONS



**Total Deletions April 2011**



**State Sentence Parole Revocations\***



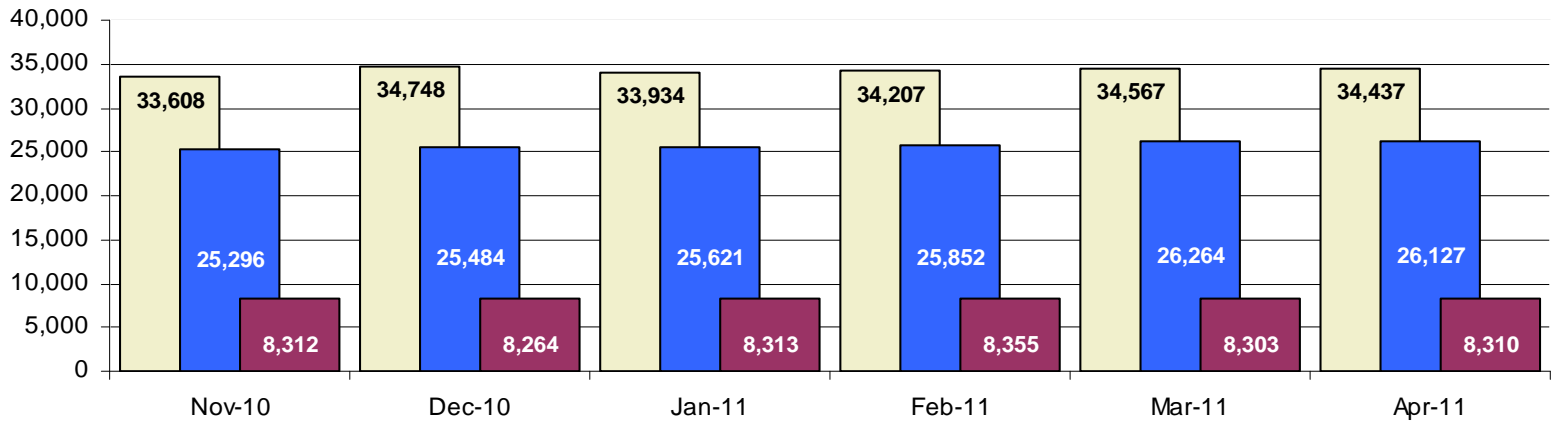
\* These revocations represent field case closure records and are dependent on case processing.

**Table 3**  
**SUPERVISED POPULATION BY ORIGINATING JURISDICTION and REGION / DISTRICT**  
**April 2011**

Region / District	PA Parole State Sentence				County		Other States		Total Population
	State Prisons	Boot Camp	County Prisons	Subtotal	Special Probation	Special Parole	Probation	Parole	
Chester	1,595	53	232	1,880	530	14	317	62	2,803
Philadelphia	6,933	184	347	7,464	1,242	9	637	135	9,487
<b>Eastern Region</b>	<b>8,528</b>	<b>237</b>	<b>579</b>	<b>9,344</b>	<b>1,772</b>	<b>23</b>	<b>954</b>	<b>197</b>	<b>12,290</b>
Allentown	2,537	144	366	3,047	398	3	412	85	3,945
Harrisburg	3,543	211	140	3,894	372	5	282	54	4,607
Scranton	1,087	15	225	1,327	194	1	261	66	1,849
Williamsport	678	18	46	742	115	8	96	22	983
<b>Central Region</b>	<b>7,845</b>	<b>388</b>	<b>777</b>	<b>9,010</b>	<b>1,079</b>	<b>17</b>	<b>1,051</b>	<b>227</b>	<b>11,384</b>
Altoona	862	20	70	952	379	75	85	26	1,517
Mercer	745	20	30	795	1,437	883	104	27	3,246
Erie	1,012	34	151	1,197	192	51	77	16	1,533
Pittsburgh	2,886	196	61	3,143	881	68	299	76	4,467
<b>Western Region</b>	<b>5,505</b>	<b>270</b>	<b>312</b>	<b>6,087</b>	<b>2,889</b>	<b>1,077</b>	<b>565</b>	<b>145</b>	<b>10,763</b>
<b>Total</b>	<b>21,878</b>	<b>895</b>	<b>1,668</b>	<b>24,441</b>	<b>5,740</b>	<b>1,117</b>	<b>2,570</b>	<b>569</b>	<b>34,437</b>
<b>Percent of Total</b>	<b>63%</b>	<b>3%</b>	<b>5%</b>	<b>71%</b>	<b>17%</b>	<b>3%</b>	<b>7%</b>	<b>2%</b>	<b>100%</b>

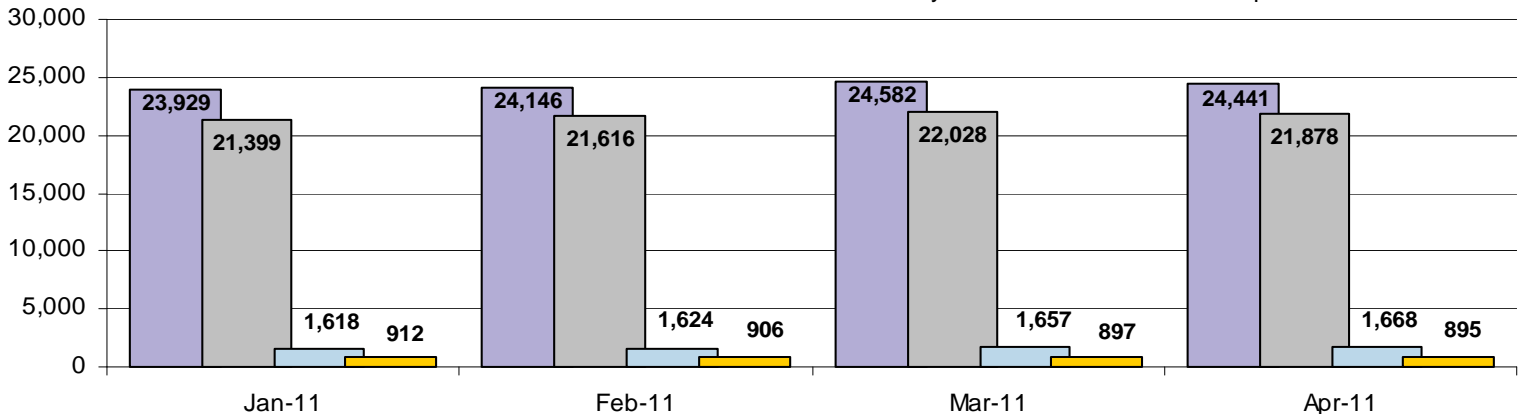
**Parole and Probation Supervised Populations**

□ Total Population    ■ Parole    ■ Probation



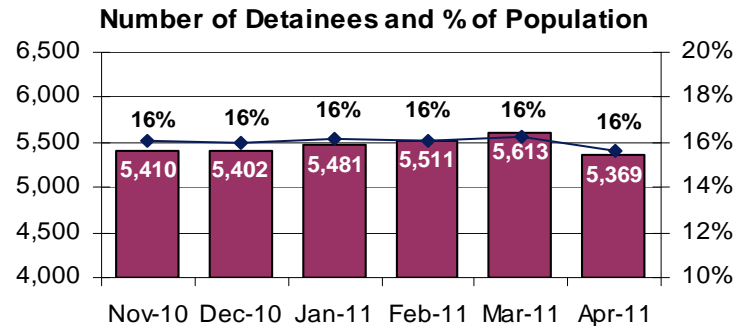
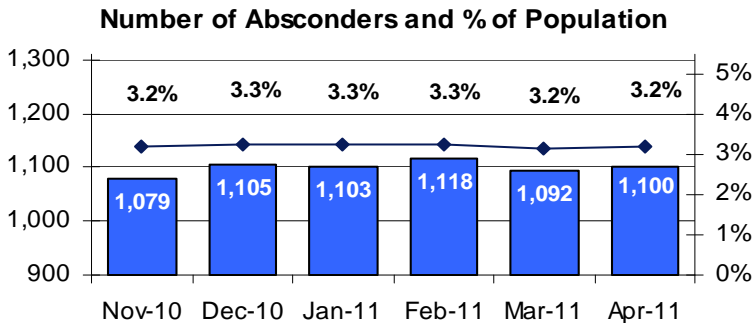
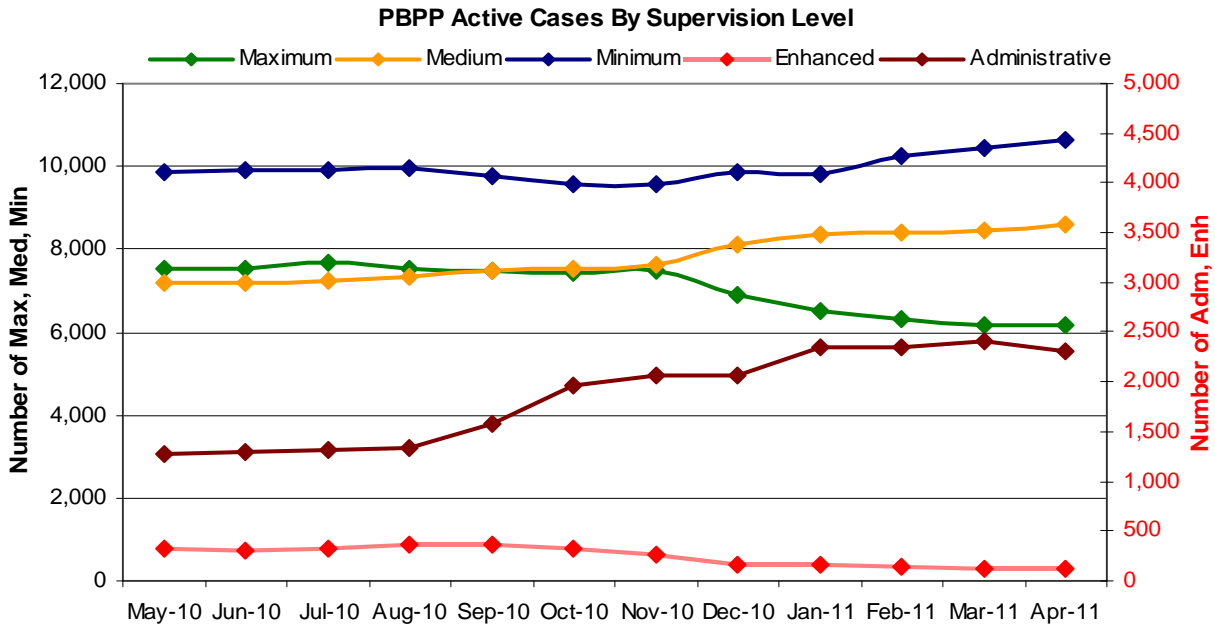
**Supervised State Sentence Cases**

■ Total State Sentence Cases    ■ State Prison Cases    ■ County Prison Cases    ■ Boot Camp Cases



**Table 4**  
**SUPERVISED POPULATION BY GRADE OF SUPERVISION and REGION / DISTRICT**  
**April 2011**

Region / District	Reporting							Non-Reporting		Total Population
	Enhanced	Maximum	Medium	Minimum	ADM / SPC	Not Classified	Subtotal	Absconder	Detainees	
Chester	6	286	729	919	398	23	1,340	52	390	1,782
Philadelphia	12	1,563	2,058	3,134	439	51	3,624	444	1,786	5,854
<b>Eastern Region</b>	<b>18</b>	<b>1,849</b>	<b>2,787</b>	<b>4,053</b>	<b>837</b>	<b>74</b>	<b>9,618</b>	<b>496</b>	<b>2,176</b>	<b>12,290</b>
Allentown	19	762	838	1,251	294	18	1,563	145	618	2,326
Harrisburg	17	872	1,141	1,221	381	21	1,623	172	782	2,577
Scranton	26	289	419	663	125	17	805	32	278	1,115
Williamsport	2	107	337	316	110	0	426	5	106	537
<b>Central Region</b>	<b>64</b>	<b>2,030</b>	<b>2,735</b>	<b>3,451</b>	<b>910</b>	<b>56</b>	<b>9,246</b>	<b>354</b>	<b>1,784</b>	<b>11,384</b>
Altoona	4	327	499	373	91	0	464	18	205	687
Mercer	2	306	923	1,437	199	1	1,637	63	315	2,015
Erie	10	242	476	525	113	1	639	33	133	805
Pittsburgh	27	1,411	1,187	787	161	2	950	136	756	1,842
<b>Western Region</b>	<b>43</b>	<b>2,286</b>	<b>3,085</b>	<b>3,122</b>	<b>564</b>	<b>4</b>	<b>9,104</b>	<b>250</b>	<b>1,409</b>	<b>10,763</b>
<b>Total</b>	<b>125</b>	<b>6,165</b>	<b>8,607</b>	<b>10,626</b>	<b>2,311</b>	<b>134</b>	<b>27,968</b>	<b>1,100</b>	<b>5,369</b>	<b>34,437</b>
<b>Percent of Total</b>	<b>&lt;1%</b>	<b>18%</b>	<b>25%</b>	<b>31%</b>	<b>7%</b>	<b>&lt;1%</b>	<b>81%</b>	<b>3%</b>	<b>16%</b>	<b>100%</b>



**Table 5**  
**SUPERVISED POPULATION BY GENDER, RACE and REGION / DISTRICT**  
**April 2011**

Region / District	Male					Female					% Male	Total Population
	White	Black	Hispanic	Other <sup>1</sup>	Total	White	Black	Hispanic	Other <sup>1</sup>	Total		
Chester	1,130	1,276	119	23	2,548	171	74	3	7	255	91%	2,803
Philadelphia	1,235	6,308	1,127	158	8,828	172	395	84	8	659	93%	9,487
<b>EASTERN REGION</b>	<b>2,365</b>	<b>7,584</b>	<b>1,246</b>	<b>181</b>	<b>11,376</b>	<b>343</b>	<b>469</b>	<b>87</b>	<b>15</b>	<b>914</b>	<b>93%</b>	<b>12,290</b>
Allentown	1,769	770	926	52	3,517	275	76	65	12	428	89%	3,945
Harrisburg	2,049	1,480	505	41	4,075	345	130	48	9	532	88%	4,607
Scranton	1,154	336	105	19	1,614	196	26	11	2	235	87%	1,849
Williamsport	677	88	12	2	779	174	24	3	3	204	79%	983
<b>CENTRAL REGION</b>	<b>5,649</b>	<b>2,674</b>	<b>1,548</b>	<b>114</b>	<b>9,985</b>	<b>990</b>	<b>256</b>	<b>127</b>	<b>26</b>	<b>1,399</b>	<b>88%</b>	<b>11,384</b>
Altoona	1,062	142	8	13	1,225	276	14	1	1	292	81%	1,517
Mercer	2,154	375	4	9	2,542	622	75	2	5	704	78%	3,246
Erie	903	336	60	10	1,309	176	42	3	3	224	85%	1,533
Pittsburgh	1,927	1,950	48	15	3,940	363	158	3	3	527	88%	4,467
<b>WESTERN REGION</b>	<b>6,046</b>	<b>2,803</b>	<b>120</b>	<b>47</b>	<b>9,016</b>	<b>1,437</b>	<b>289</b>	<b>9</b>	<b>12</b>	<b>1,747</b>	<b>84%</b>	<b>10,763</b>
<b>TOTAL</b>	<b>14,060</b>	<b>13,061</b>	<b>2,914</b>	<b>342</b>	<b>30,377</b>	<b>2,770</b>	<b>1,014</b>	<b>223</b>	<b>53</b>	<b>4,060</b>	<b>88%</b>	<b>34,437</b>

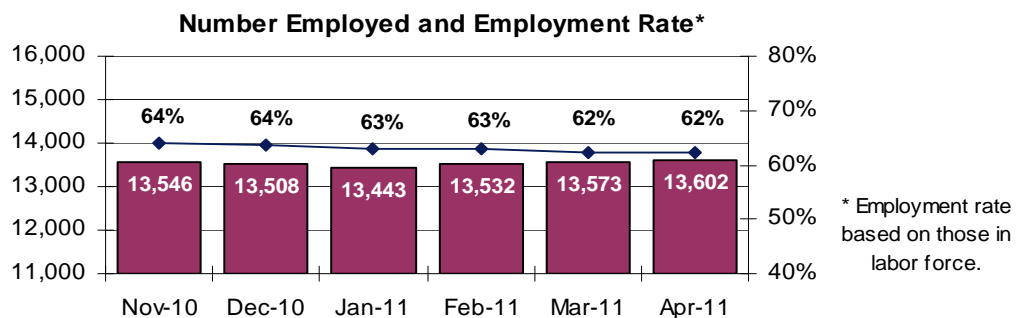
<sup>1</sup> "Other" includes Asian, Pacific Islander, Indian (Native American and Native Alaskan), and cases not elsewhere classified.

**Table 6**  
**SUPERVISED POPULATION BY EMPLOYMENT STATUS and REGION / DISTRICT**  
**April 2011**

Region / District	In Labor Force				Not In Labor Force					Total Population
	Employed Part Time	Employed Full Time	Unemployed	Employment Rate	Unable to Work <sup>2</sup>	Student	Unearned Income <sup>3</sup>	Unknown	Non-Reporting	
Chester	127	1,178	707	65%	239	25	84	1	442	2,803
Philadelphia	470	2,484	2,874	51%	842	107	479	1	2,230	9,487
<b>EASTERN REGION</b>	<b>597</b>	<b>3,662</b>	<b>3,581</b>	<b>54%</b>	<b>1,081</b>	<b>132</b>	<b>563</b>	<b>2</b>	<b>2,672</b>	<b>12,290</b>
Allentown	279	1,549	426	81%	565	54	308	1	763	3,945
Harrisburg	193	1,621	1,360	57%	282	35	157	5	954	4,607
Scranton	51	898	304	76%	119	22	144	1	310	1,849
Williamsport	80	425	201	72%	68	25	73	0	111	983
<b>CENTRAL REGION</b>	<b>603</b>	<b>4,493</b>	<b>2,291</b>	<b>69%</b>	<b>1,034</b>	<b>136</b>	<b>682</b>	<b>7</b>	<b>2,138</b>	<b>11,384</b>
Altoona	157	490	320	67%	106	33	188	0	223	1,517
Mercer	299	928	906	58%	427	32	275	1	378	3,246
Erie	122	526	311	68%	206	26	173	3	166	1,533
Pittsburgh	244	1,481	852	67%	693	61	244	0	892	4,467
<b>WESTERN REGION</b>	<b>822</b>	<b>3,425</b>	<b>2,389</b>	<b>64%</b>	<b>1,432</b>	<b>152</b>	<b>880</b>	<b>4</b>	<b>1,659</b>	<b>10,763</b>
<b>TOTAL</b>	<b>2,022</b>	<b>11,580</b>	<b>8,261</b>	<b>62%</b>	<b>3,547</b>	<b>420</b>	<b>2,125</b>	<b>13</b>	<b>6,469</b>	<b>34,437</b>

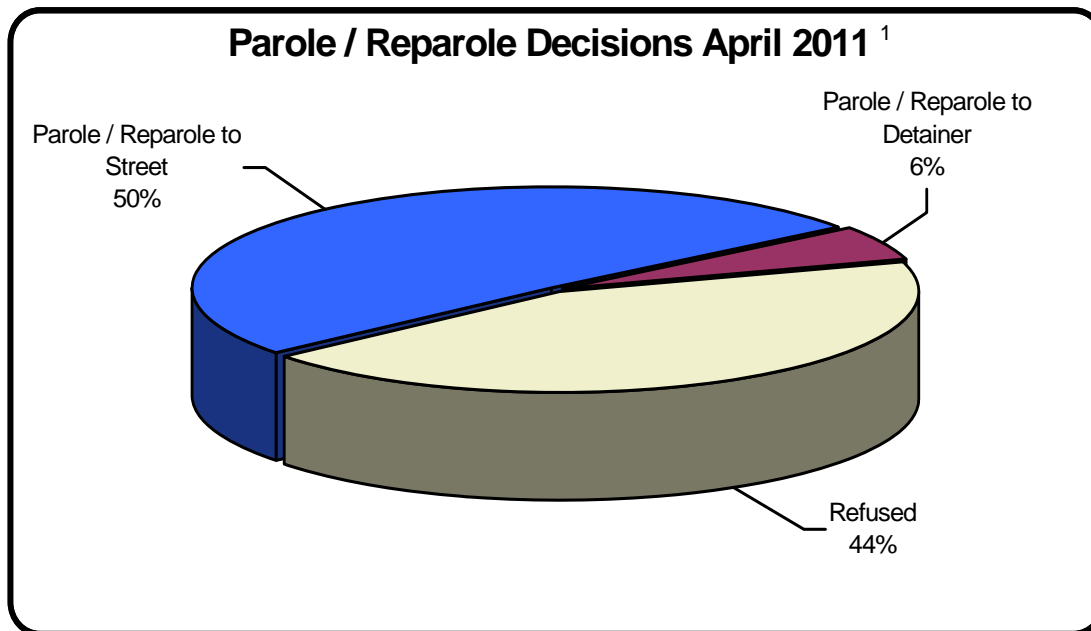
<sup>2</sup> Offender is unable to work due to a physical or mental disability, is a care provider, attends inpatient treatment, etc.

<sup>3</sup> Offender collects welfare assistance, workmen's compensation, monthly pension, Social Security, disability payments, etc.



**Table 7**  
**BOARD DECISIONS**  
**April 2011**

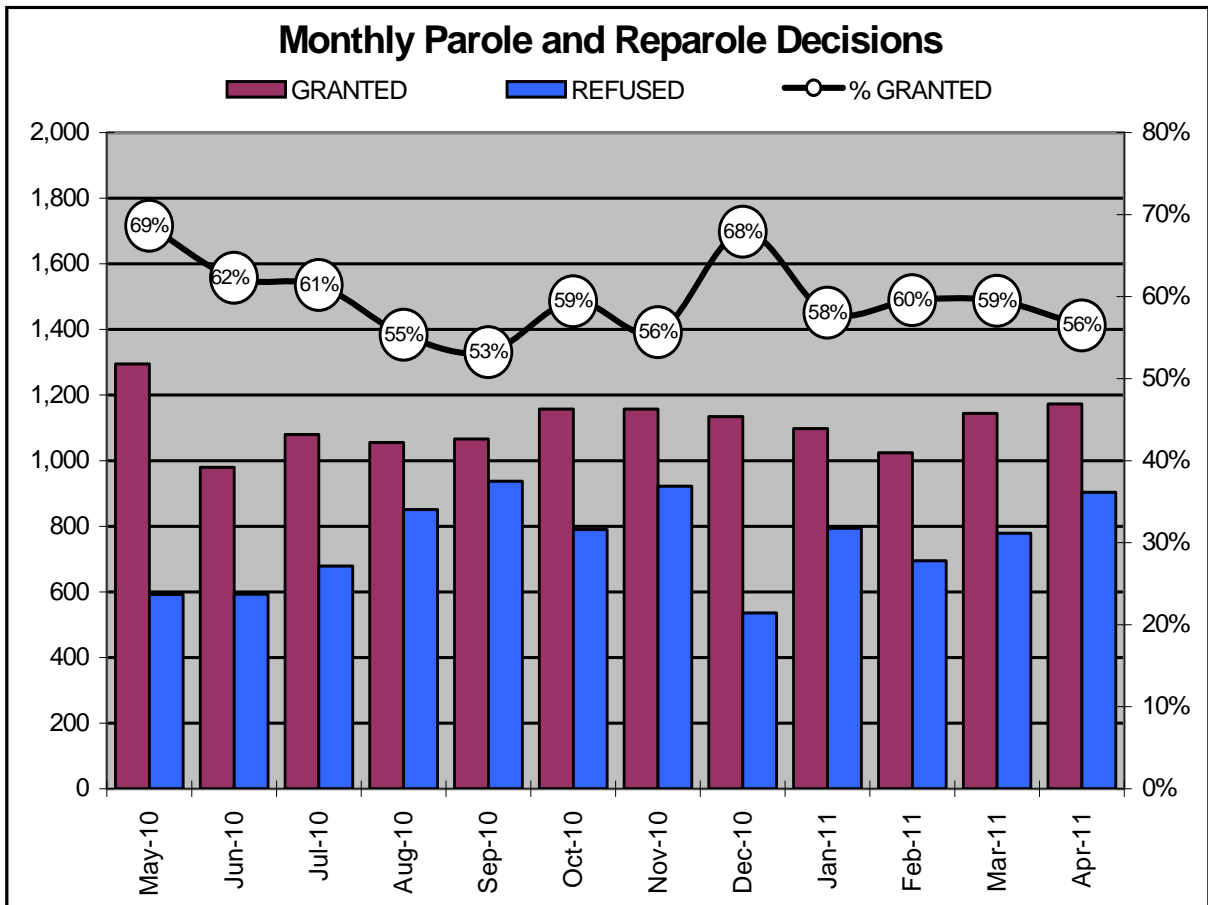
Type of Decision	Total
Parole / Reparole to Street	1,053
Parole / Reparole to Detainer	120
Refused	904
<b>Total Considered</b>	<b>2,077</b>
Recommitments as TPV	337
Recommitments as CPV	148
Recommitments as CPV and TPV	37
<b>Total Recommitments</b>	<b>522</b>
Refer to Prior Action	81
Other Decisions	697
<b>Total Decisions</b>	<b>3,377</b>



<sup>1</sup> The 56% does not necessarily reflect the overall parole rate, but rather is the calculated percent of parole decisions for the total number of Board Actions produced during this period of time.

**Table 8**  
**MONTHLY PAROLE and REPAROLE DECISIONS**  
**April 2011**

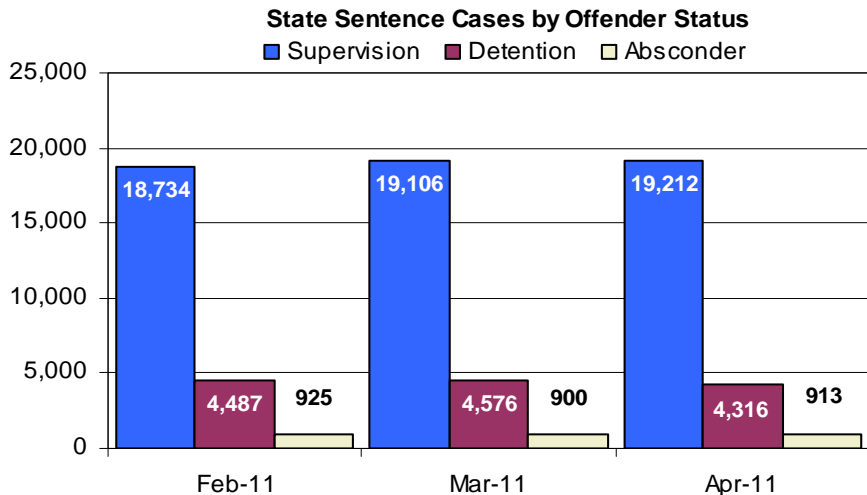
MONTH-YEAR	GRANTED	REFUSED	CONSIDERED	% GRANTED
May-10	1,295	592	1,887	69%
Jun-10	980	593	1,573	62%
Jul-10	1,080	679	1,759	61%
Aug-10	1,055	851	1,906	55%
Sep-10	1,066	937	2,003	53%
Oct-10	1,157	790	1,947	59%
Nov-10	1,157	922	2,079	56%
Dec-10	1,134	536	1,670	68%
Jan-11	1,098	794	1,892	58%
Feb-11	1,024	695	1,719	60%
Mar-11	1,144	779	1,923	59%
Apr-11	1,173	904	2,077	56%
<b>Monthly Average Over 12 Months</b>	<b>1,114</b>	<b>756</b>	<b>1,870</b>	<b>60%</b>





Offender Status - April 2011					
Status	State Prison	County Prison	County Sentence	Other States Cases	Total
Supervision	17,858	1,354	5,777	2,979	27,968
Absconder	878	35	187	0	1,100
Detention	4,037	279	893	160	5,369
<b>Total</b>	<b>22,773</b>	<b>1,668</b>	<b>6,857</b>	<b>3,139</b>	<b>34,437</b>

PBPP Monthly Population Profile						
Offender Status	Nov-10	Dec-10	Jan-11	Feb-11	Mar-11	Apr-11
<b>State sentence from state institution</b>	<b>22,047</b>	<b>22,204</b>	<b>22,311</b>	<b>22,522</b>	<b>22,925</b>	<b>22,773</b>
<i>Supervision</i>	17,088	17,216	17,252	17,435	17,773	17,858
<i>Absconder</i>	858	871	867	882	862	878
<i>Detention</i>	4,101	4,117	4,192	4,205	4,290	4,037
<b>State sentence from county prison</b>	<b>1,601</b>	<b>1,605</b>	<b>1,618</b>	<b>1,624</b>	<b>1,657</b>	<b>1,668</b>
<i>Supervision</i>	1,276	1,286	1,295	1,299	1,333	1,354
<i>Absconder</i>	46	40	41	43	38	35
<i>Detention</i>	279	279	282	282	286	279
<b>County sentence Prob &amp; Parole</b>	<b>6,770</b>	<b>6,778</b>	<b>6,827</b>	<b>6,896</b>	<b>6,822</b>	<b>6,857</b>
<i>Supervision</i>	5,693	5,711	5,763	5,826	5,744	5,777
<i>Absconder</i>	175	194	195	193	192	187
<i>Detention</i>	902	873	869	877	886	893
<b>Other state's sentence Prob &amp; Parole</b>	<b>3,190</b>	<b>3,161</b>	<b>3,178</b>	<b>3,165</b>	<b>3,163</b>	<b>3,139</b>
<i>Supervision</i>	3,062	3,028	3,040	3,018	3,012	2,979
<i>Absconder</i>	0	0	0	0	0	0
<i>Detention</i>	128	133	138	147	151	160
<b>PBPP Population end of month</b>	<b>33,608</b>	<b>34,748</b>	<b>33,934</b>	<b>34,207</b>	<b>34,567</b>	<b>34,437</b>



## PBPP Population Breakdown By Place of Incarceration/Jurisdiction – April 2011

Monthly Count of Grant and Refuse Board Actions							
Type of Decision	County Prison			State Prison			All Grant/Refuse Board Actions
	Grant	Refuse	Total	Grant	Refuse	Total	
May 2010	63	28	91	1,232	564	1,796	1,887
June 2010	42	25	67	938	568	1,506	1,573
July 2010	58	31	89	1,022	648	1,670	1,759
August 2010	62	32	94	993	819	1,812	1,906
September 2010	56	32	88	1,010	905	1,915	2,003
October 2010	56	22	78	1,101	768	1,869	1,947
November 2010	63	35	98	1,094	887	1,981	2,079
December 2010	47	33	80	1,087	503	1,590	1,670
January 2011	48	11	59	1,050	783	1,833	1,892
February 2011	48	29	77	976	666	1,642	1,719
March 2011	54	32	86	1,090	747	1,837	1,923
April 2011	45	38	83	1,128	866	1,994	2,077
<b>2011 Total</b>	<b>195</b>	<b>110</b>	<b>305</b>	<b>4,244</b>	<b>3,062</b>	<b>7,306</b>	<b>7,611</b>

Additions and Deletions						
	Nov-10	Dec-10	Jan-11	Feb-11	Mar-11	Apr-11
<b>Total Additions</b>	<b>1,311</b>	<b>1,341</b>	<b>1,348</b>	<b>1,325</b>	<b>1,613</b>	<b>1,325</b>
State sentence - State Prison	797	865	835	838	1,065	845
State sentence - County Prison	65	57	72	69	90	80
County sentence Prob & Parole	285	276	282	282	289	268
Other state's sentence	164	143	159	136	169	132
<b>Total Deletions</b>	<b>1,129</b>	<b>1,193</b>	<b>1,166</b>	<b>1,045</b>	<b>1,244</b>	<b>1,438</b>
<b>State sentence - State Prison</b>	<b>677</b>	<b>691</b>	<b>715</b>	<b>601</b>	<b>643</b>	<b>962</b>
<i>Technical Violator</i>	191	216	169	179	165	324
<i>Convicted Violator</i>	148	109	119	115	95	230
<i>Successful Completion</i>	314	344	391	283	357	379
<i>Other Case Closure</i>	24	22	36	24	26	29
<b>State sentence - County Prison</b>	<b>59</b>	<b>53</b>	<b>49</b>	<b>56</b>	<b>52</b>	<b>66</b>
<i>Technical Violator</i>	11	8	14	13	11	19
<i>Convicted Violator</i>	4	8	5	4	8	12
<i>Successful Completion</i>	40	30	30	36	30	33
<i>Other Case Closure</i>	4	7	0	3	3	2
<b>County sentence Prob &amp; Parole</b>	<b>230</b>	<b>269</b>	<b>259</b>	<b>239</b>	<b>376</b>	<b>253</b>
<i>Technical Violator</i>	33	23	39	28	51	29
<i>Convicted Violator</i>	25	31	40	22	35	30
<i>Successful Completion</i>	115	149	121	118	200	129
<i>Other Case Closure</i>	57	66	59	71	90	65
<b>Other state's sentence</b>	<b>163</b>	<b>180</b>	<b>143</b>	<b>149</b>	<b>173</b>	<b>157</b>
<i>Technical Violator</i>	0	2	2	0	3	3
<i>Convicted Violator</i>	0	3	3	1	2	2
<i>Successful Completion</i>	58	77	49	63	72	69
<i>Other Case Closure</i>	105	98	89	85	96	83
<b>PBPP Population end of month</b>	<b>33,608</b>	<b>33,748</b>	<b>33,934</b>	<b>34,207</b>	<b>34,567</b>	<b>34,437</b>